

**RADIAL CEMENT BOND
GAMMA RAY
CCL**

Company ANADARKO PETROLEUM CORPORATION		Company ANADARKO PETROLEUM CORPORATION					
Well SARCHET 1	Well SARCHET 1	Well SARCHET 1	Well SARCHET 1				
Field WATTENBERG	Field WATTENBERG	Field WATTENBERG	Field WATTENBERG				
County WELD	County WELD	County WELD	County WELD				
State CO	State CO	State CO	State CO				
Location: SHL: 1650' FNL & 1440' FEL LAT: 40.12700 & LONG: -104.68380		Other Services					
SEC 20 TWP 2N RGE 65W		Elevation					
Permanent Datum	GL	Elevation	4907'				
Log Measured From	KB 11'	Elevation	KB. 4918'				
Drilling Measured From	KB	Elevation	D.F. 4917'				
Date 2-8-2016		Elevation G.L. 4907'					
Run Number	ONE						
Depth Driller	7850'						
Depth Logger	1520'						
Bottom Logged Interval	1511'						
Top Log Interval	SURFACE						
Open Hole Size	7.875						
Type Fluid	WATER						
Density / Viscosity	1.0						
Max. Recorded Temp.	77 DEG F						
Estimated Cement Top	256'						
Time Well Ready	N/A						
Time Logger on Bottom	N/A						
Equipment Number	4310						
Location	GREELEY						
Recorded By	N. BREHMER						
Witnessed By	L. MORALES						
Borehole Record		Tubing Record					
Run Number	Bit	From	To	Size	Weight	From	To
Casing Record	Size		Wgt/Ft	Top	Bottom		
Surface String	8.63		24#	SURFACE	231'		
Prod. String							
Production String	4.5		11.6#	SURFACE	7812'		
Liner							

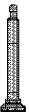
<<< Fold Here >>>

All interpretations are opinions based on inferences from electrical or other measurements and we cannot and do not guarantee the accuracy or correctness of any interpretation, and we shall not, except in the case of gross or willful negligence on our part, be liable or responsible for any loss, costs, damages, or expenses incurred or sustained by anyone resulting from any interpretation made by any of our officers, agents or employees. These interpretations are also subject to our general terms and conditions set out in our current Price Schedule.

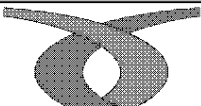
Comments

RAN CBL TO VERIFY CEMENT BOND
RIG CREW TRIPPED IN A CIRCULATED
CORRELATED UP HOLE 13' TO JW CBL 8-16-11
CALIBRATED FREE PIPE @1500', 81mA IN 4.5"
REPEAT PASS OVER 300' TO SURFACE DUE TO QUESTIONABLE
READINGS ON MAIN PASS

THANK YOU FOR USING IPS !!!!!!!

Sensor	Offset (ft)	Schematic	Description	Len (ft)	OD (in)	Wt (lb)
			1_4	1.00	1.36	5.00

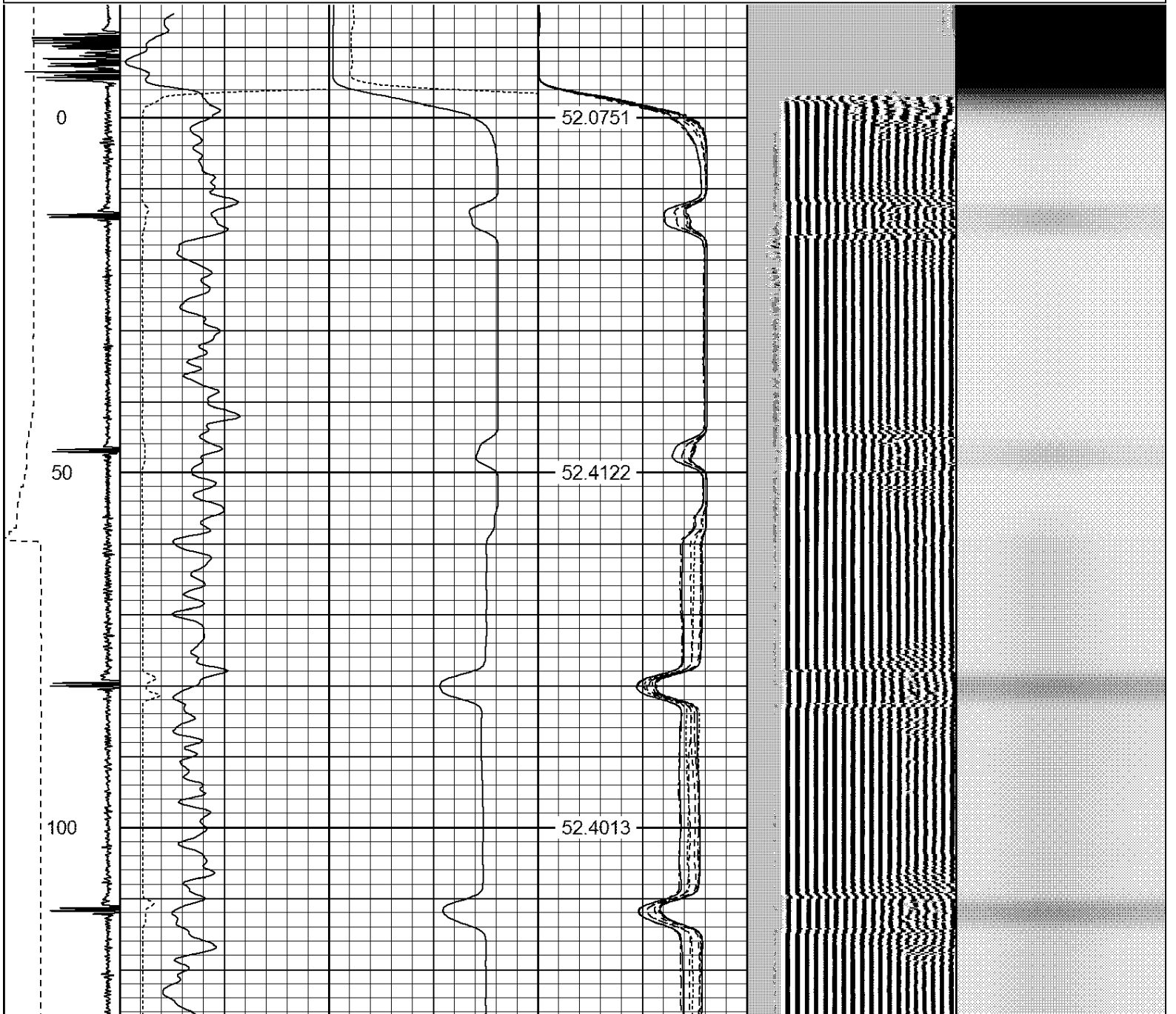
			PTS275	2.83	2.75	
HEADVOLT	16.13					
IntTemp	14.71					
WVF3FT	11.46		RBT-Probe (Base)	8.92	2.75	90.00
WVFCAL	11.46		Probe Radii Bond Tool with Digital Telemetry			
WVFS1	11.46					
WVFS2	11.46					
WVFS3	11.46					
WVFS4	11.46					
WVFS5	11.46					
WVFS6	11.46					
WVFS7	11.46					
WVFS8	11.46					
WVF5FT	10.46					
CNLSC	6.00		CNT-Probe_B (275)	2.88	2.75	40.00
CNSSC	5.17		6 bow centralizer			
CCL	3.64					
			GR-Probe (275)	4.33	2.75	30.00
			Probe 2.75"			
GR	0.90					
Dataset: sarchet 1.db: field/well/run1/pass2 Total Length: 19.96 ft Total Weight: 165.00 lb O.D. 2.75 in						

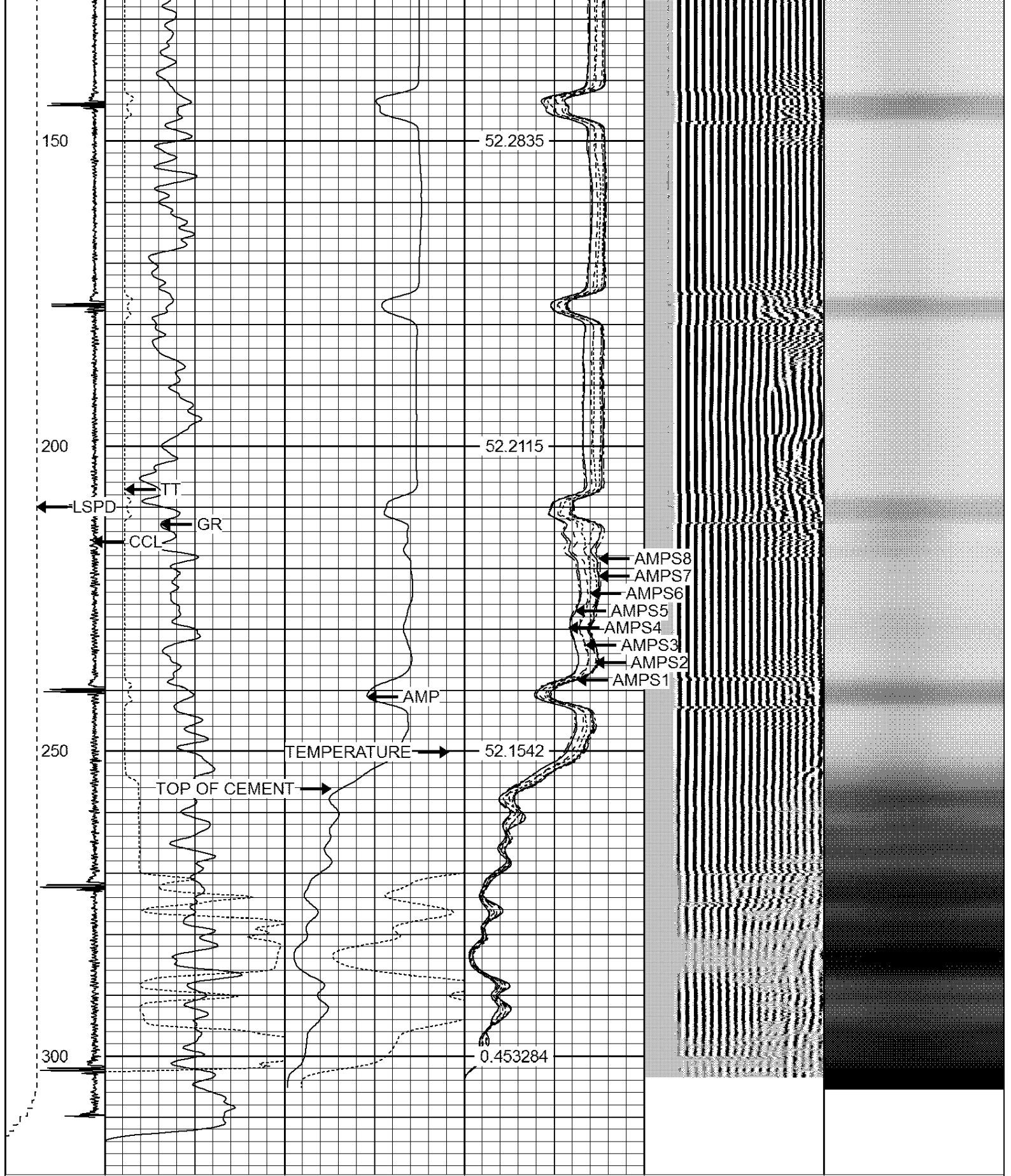


REPEAT PASS

Database File: sarchet 1.db
 Dataset Pathname: pass4
 Presentation Format: ips_rbt
 Dataset Creation: Mon Feb 08 23:08:34 2016 by Log 7.0 B1
 Charted by: Depth in Feet scaled 1:240

-9	CCL	1	200	TT (usec)	800	0	AMP (mV)	100	0	AMPS1	100	200	VDL	1200	1	Cement Map	8
LSPD			0	GR (GAPI)	200	0	AMPx5 (mV)	20	0	AMPS2	100				100		1
(ft/min)			200	GR (GAPI)	400				0	AMPS3	100						
0		250							0	AMPS4	100						
									0	AMPS5	100						
									0	AMPS6	100						
									0	AMPS7	100						
									0	AMPS8	100						
										IntTemp							
										(degF)							






-9	CCL	1	200	TT (usec)	800	0	AMP (mV)	100	0	AMPS1	100	200	VDL	1200	1	Cement Map	8
LSPD			0	GR (GAPI)	200	0	AMPx5 (mV)	20	0	AMPS2	100				100		1
(ft/min)			200	GR (GAPI)	400				0	AMPS3	100						
0	250								0	AMPS4	100						
									0	AMPS5	100						
									0	AMPS6	100						

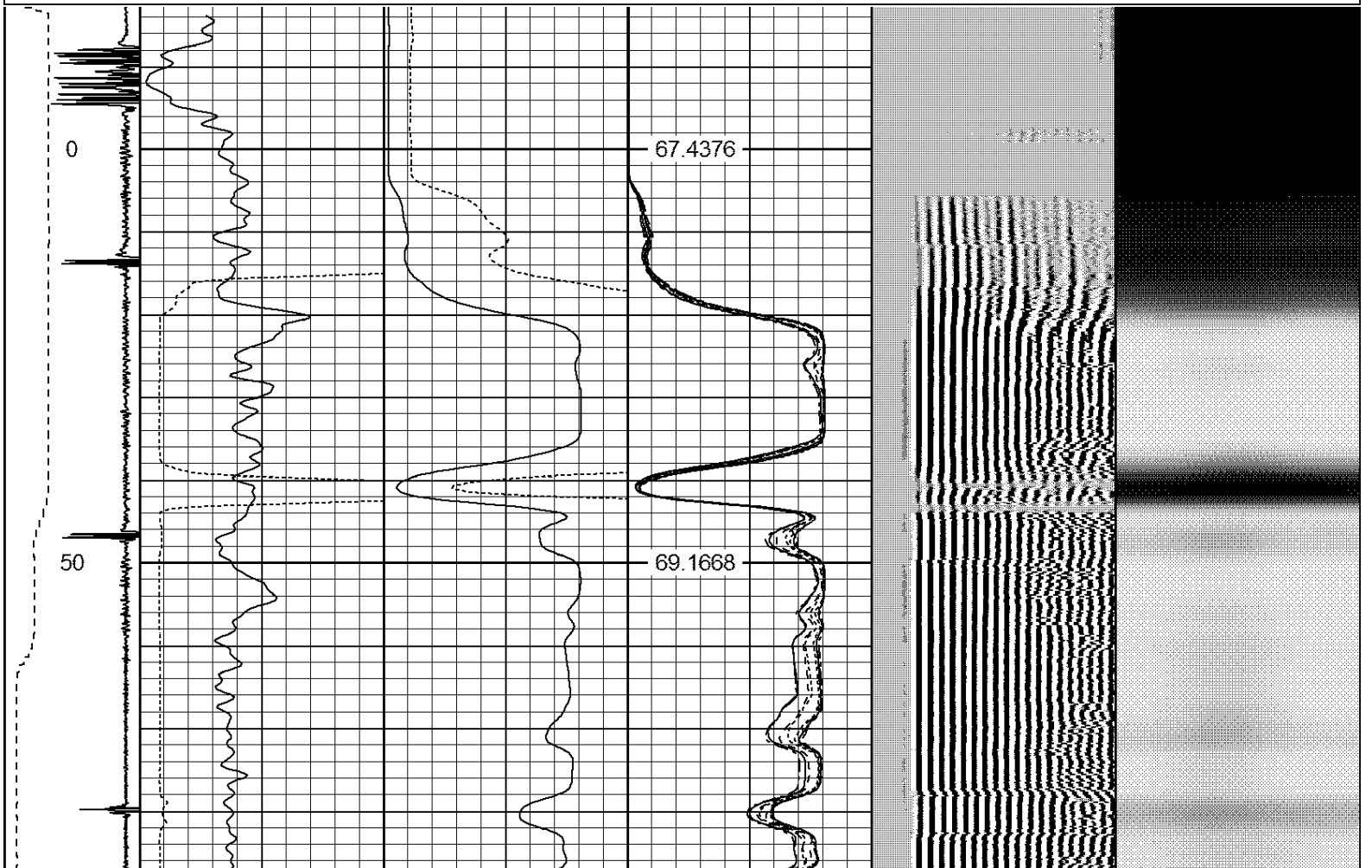
```

IntTemp
(degF)

```



-9	CCL	1	200	TT (usec)	1000	0	AMP (mV)	100	0	AMPS1	100	200	VDL	1200	1	Cement Map	8
LSPD (ft/min)	0	250	0	GR (GAPI)	200	0	AMPx5 (mV)	20	0	AMPS2	100		100	1			
			200	GR (GAPI)	400		0	AMPS3	100								
						0	AMPS4	100									
						0	AMPS5	100									
						0	AMPS6	100									
						0	AMPS7	100									
						0	AMPS8	100									
							IntTemp (degF)										



100

71.8152

150

72.6827

200

73.5885

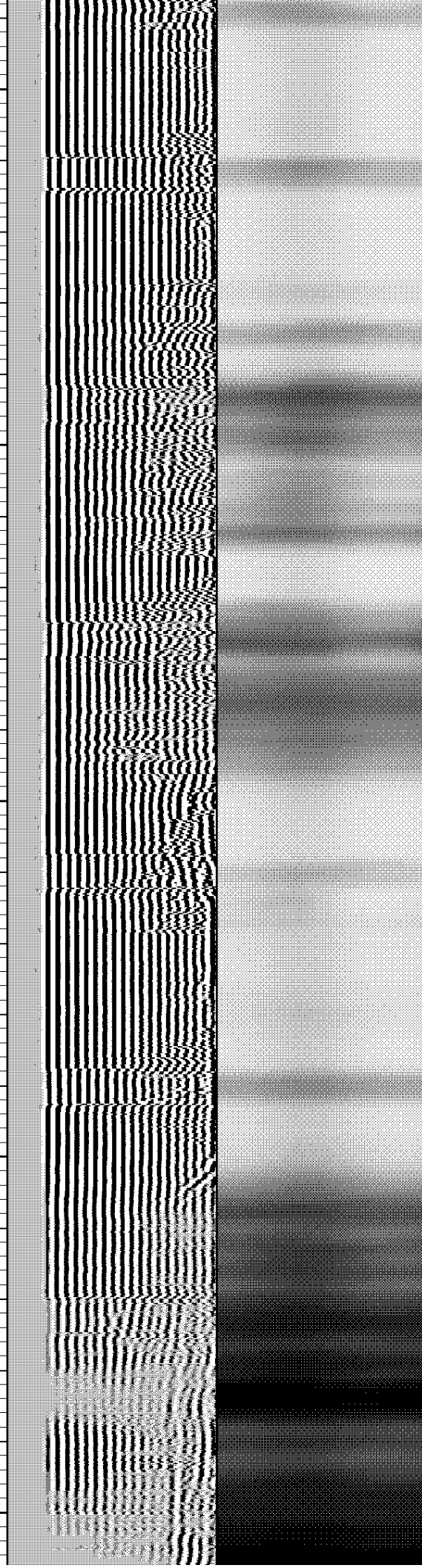
250

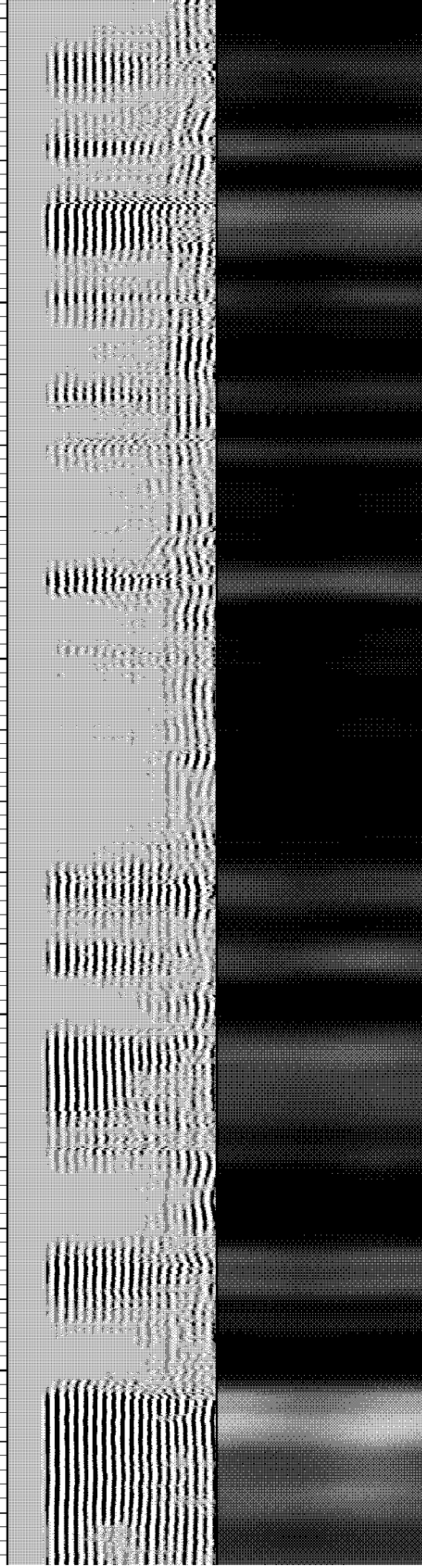
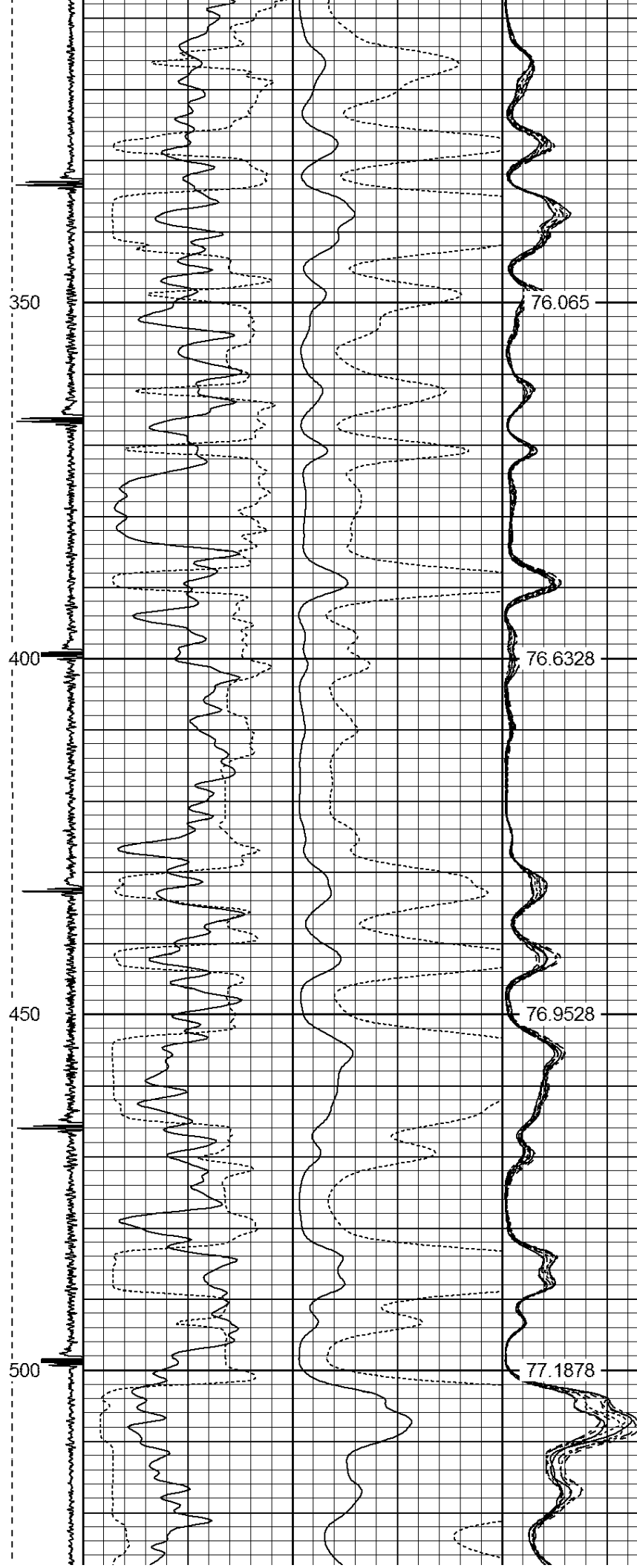
74.5051

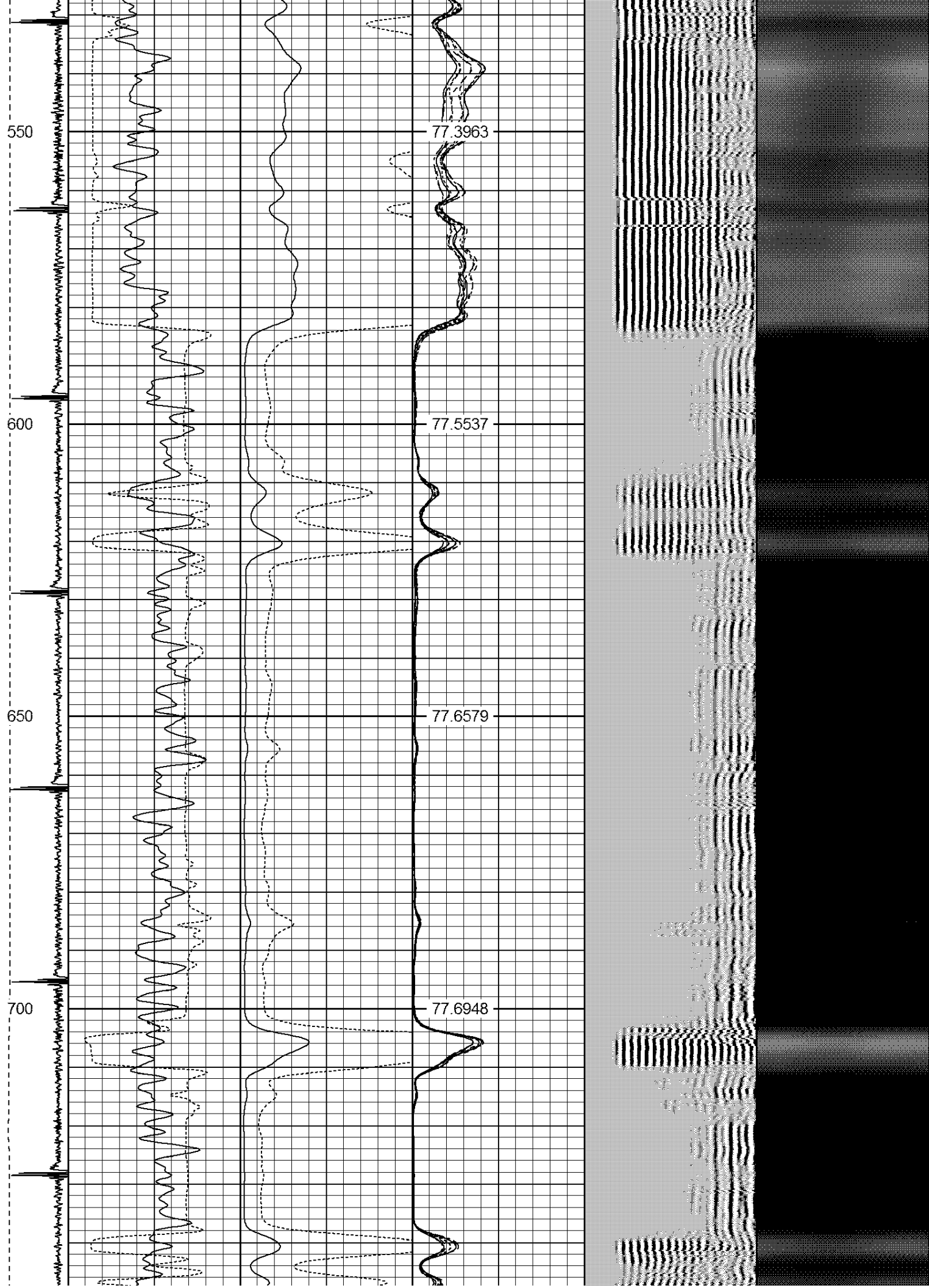
TOP OF CEMENT →

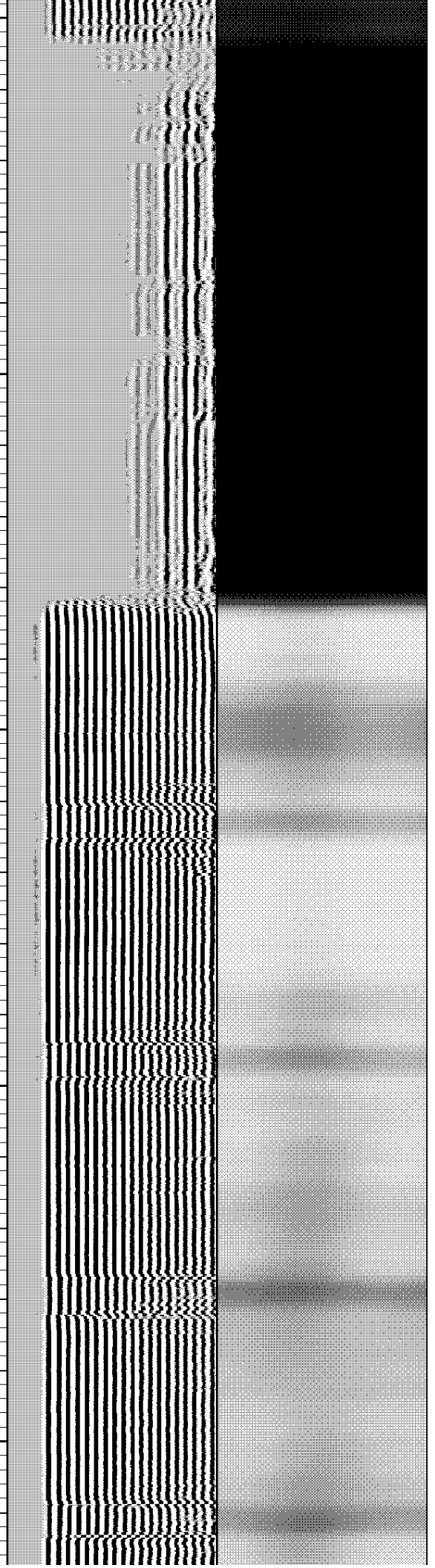
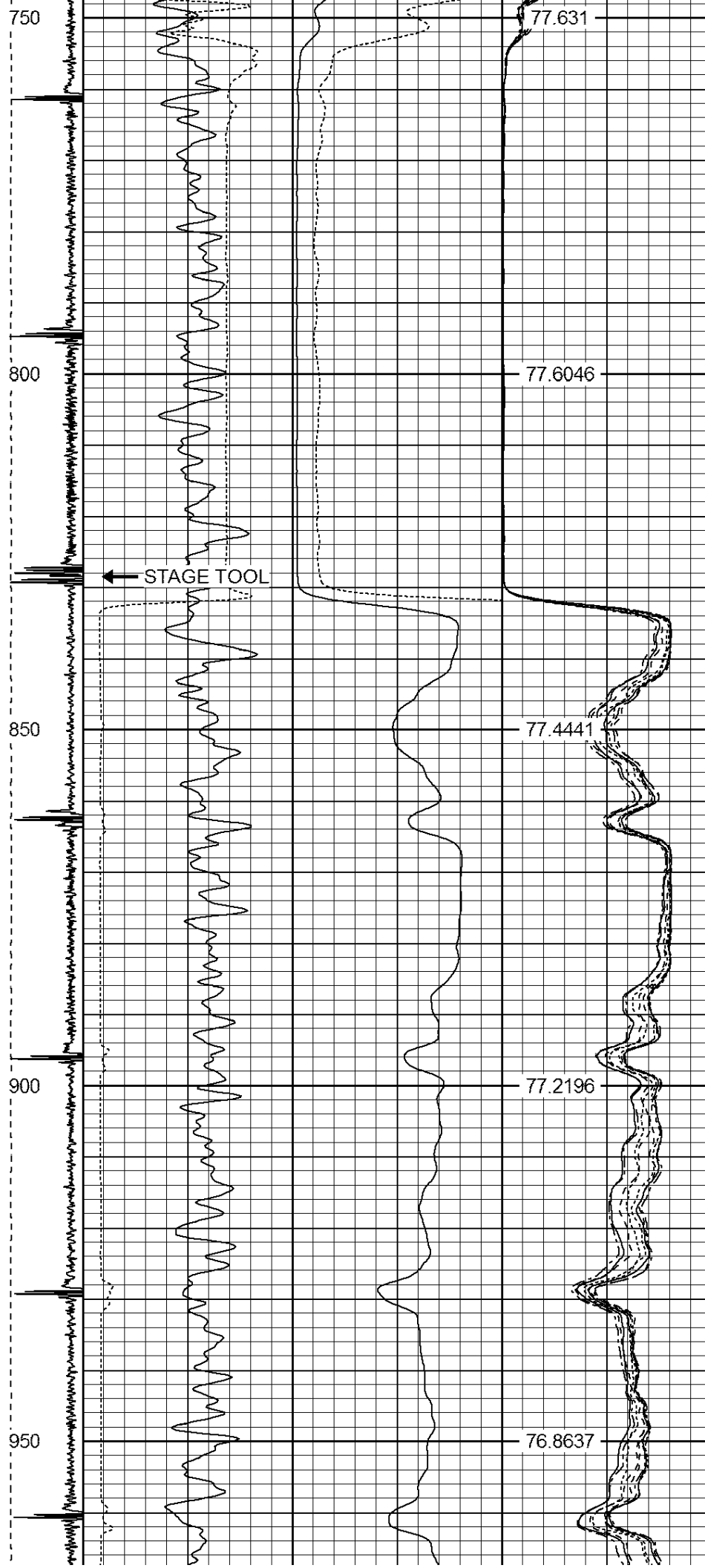
300

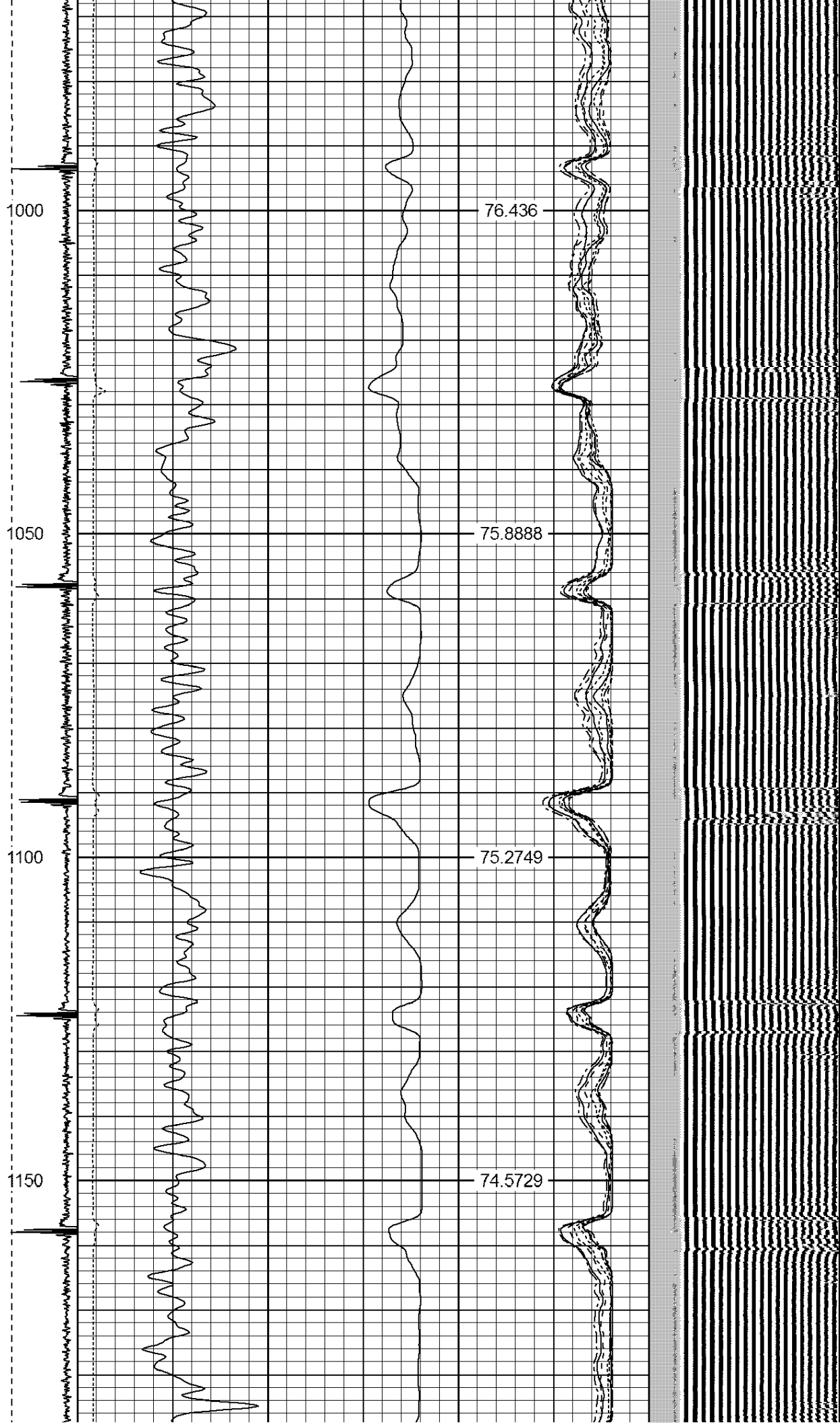
75.4115



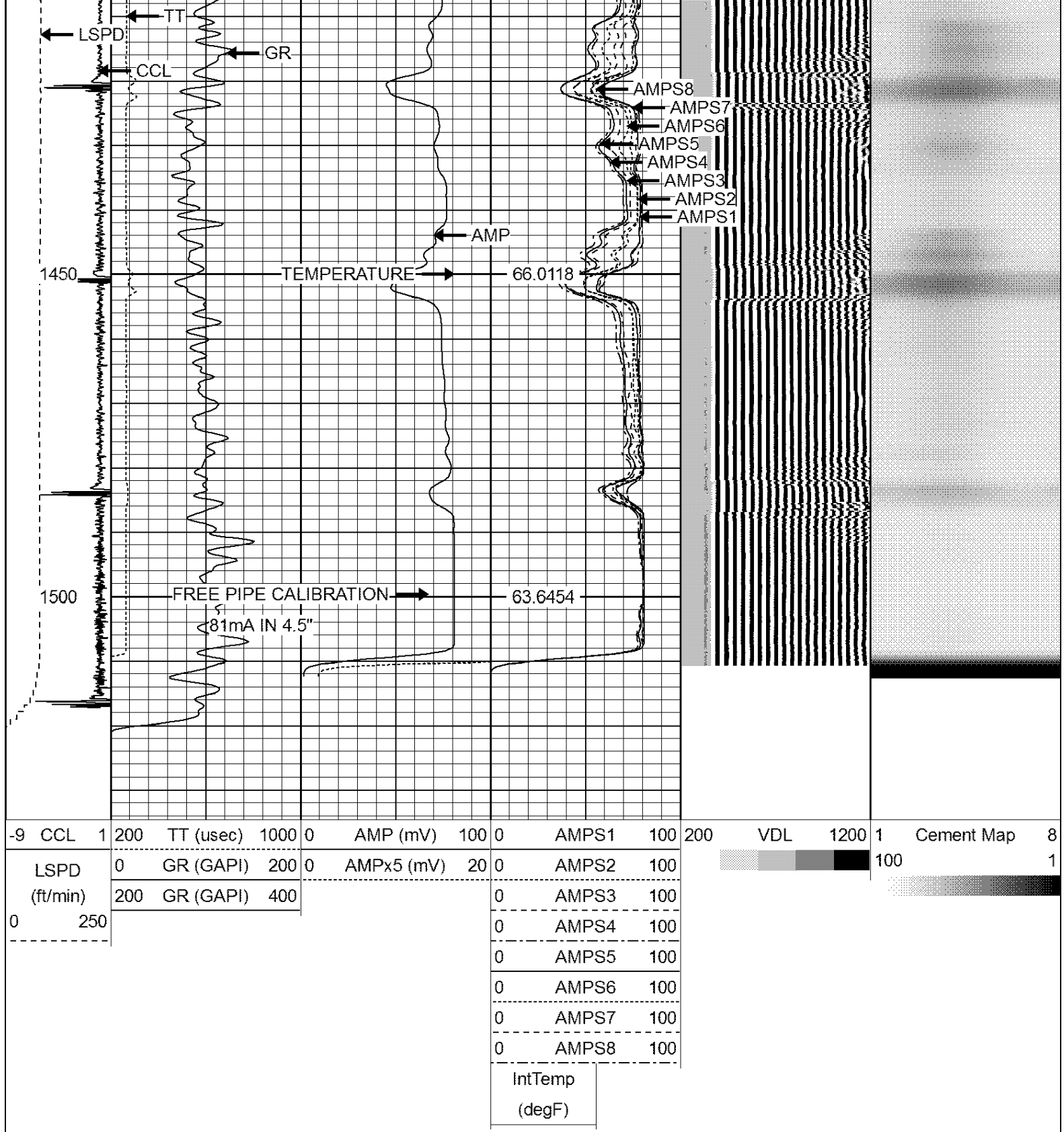












Calibration Report

Database File: sarchet 1.db
 Dataset Pathname: pass2
 Dataset Creation: Mon Feb 08 21:55:44 2016 by Log 7.0 B1

Gamma Ray Calibration Report

Serial Number: 275
 Tool Model: Probe
 Performed: Tue Sep 23 07:13:12 2014

Calibrator Value: 100.0 GAPI

Background Reading:		35.0	cps		
Calibrator Reading:		160.0	cps		
Sensitivity:		1.0000	GAPI/cps		
Compensated Neutron Calibration Report					
Serial Number:		275			
Tool Model:		Probe_B			
CALIBRATION		Wed Jul 30 08:47:19 2008			
Detector		Readings		Target	
Short Space		5001.20	cps	0.00	cps
Long Space		1029.31	cps	0.00	cps
					1.0000
					1.0000
PRE-SURVEY VERIFICATION					
Detector		Readings		Measured	
1) Short Space		cps			
Long Space		cps		pu	
2) Short Space		cps			
Long Space		cps		pu	
3) Short Space		cps			
Long Space		cps		pu	
POST-SURVEY VERIFICATION					
Detector		Readings		Measured	
1) Short Space		cps			
Long Space		cps		pu	
2) Short Space		cps			
Long Space		cps		pu	
3) Short Space		cps			
Long Space		cps		pu	
Segmented Cement Bond Log Calibration Report					
Serial Number:		Base			
Tool Model:		Probe			
Calibration Casing Diameter:		4.500	in		
Calibration Depth:		1534.500	ft		
Master Calibration, performed Mon Feb 08 21:55:35 2016:					
		Raw (v)		Calibrated (mv)	

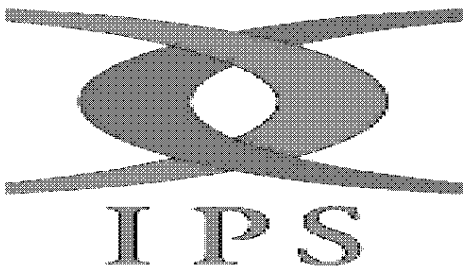
S7	0.007	2.500	0.500	81.000	32.285	0.286
S8	0.005	2.500	0.500	81.000	32.267	0.331

Internal Reference Calibration, performed Tue Jun 05 07:53:42 2012:

	Raw (v)		Calibrated (v)		Results	
	Zero	Cal	Zero	Cal	Gain	Offset
CAL	0.000	0.000	1.454	2.500	1.000	0.000

Air Zero Calibration, performed Mon Feb 08 20:24:01 2016:

	Raw (v)		Calibrated (v)		Results	
	Zero		Zero		Offset	
3'	0.000		0.000		0.000	
5'	0.000		0.000		0.000	
SUM						
S1	0.000		0.000		0.000	
S2	0.000		0.000		0.000	
S3	0.000		0.000		0.000	
S4	0.000		0.000		0.000	
S5	0.000		0.000		0.000	
S6	0.000		0.000		0.000	
S7	0.000		0.000		0.000	
S8	0.000		0.000		0.000	



Company	ANADARKO PETROLEUM CORPORATION
Well	SARCHET 1
Field	WATTENBERG
County	WELD
State	CO