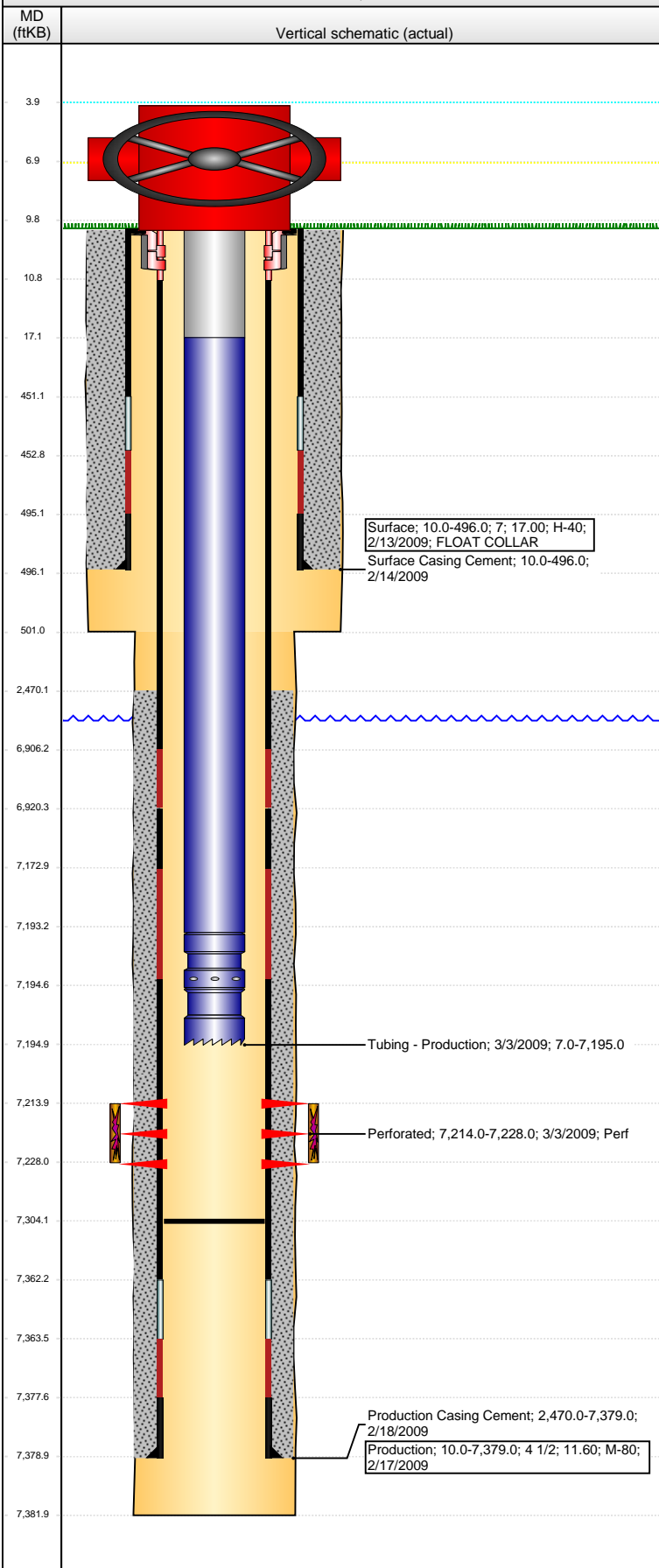


**Well Name: OTTOSON I12-25**

VERTICAL - ORIGINAL HOLE, 3/14/2016 4:35:30 PM



Well Header									
API 05-123-29233		Business Unit DJ BASIN		District 15		Well Config VERTICAL			
Original KB Elevation (ft) 4,793		KB - GL / MSL (ftKB) 10.00		Spud Date 2/13/2009		P & A Date			
Comment									
Directions To Well WCR 37 & 70, WEST .8 MILE, NORTH-NORTHWEST .3 MILE TO LOCATION									
Congressional Location									
Quarter 1	Quarter 2	Quarter 3 NW	Quarter 4 SW	Section 12	Township 6 N	Twnshp N...	Range 66	Rng E/W Dir W	
Bottom Hole Location									
North-South Distance (ft)		From N or S Line		East-West Distance (ft)			From E or W Line		
Plug Back Total Depths									
Date	Depth (ftKB)	Method			Com				
2/17/2009	7,363.0	CASING TALLY			TOP OF FLOAT COLLAR				
2/27/2009	7,304.0	CASED HOLE LOG			DEPTH LOGGER ON CBL				
Wellbore Sections									
Section Des			Size (in)		Act Top, MD (ftKB)		Act Btm, MD (ftKB)		
SURFACE			9 7/8		10.0		501.0		
PRODUCTION			6 1/4		501.0		7,382.0		
Zone Statuses									
Zone Name	Status Date	Status	Fluid Type		Job	Prod Method			
CODELL	3/13/2009	PR			DRILLING/CO...				
Casing Strings									
Surface, 496.0ftKB									
Casing Description Surface		Run Date 2/13/2009	OD (in) 7	Wt/Len (l... 17.00	Grade H-40	Top, MD (ft... 10.0	MD (ftKB) 496.0		
Production, 7,379.0ftKB									
Casing Description Production		Run Date 2/17/2009	OD (in) 4 1/2	Wt/Len (l... 11.60	Grade M-80	Top, MD (ft... 10.0	MD (ftKB) 7,379.0		
Cement									
Description Surface Casing Cement					Top Depth (ftKB) 10.0		Bottom Depth (ftKB) 496.0		
Description Production Casing Cement					Top Depth (ftKB) 2,470.0		Bottom Depth (ftKB) 7,379.0		
Tubing Strings									
Tubing Description Tubing - Production		Run Date 3/3/2009	String... 2 3/8	ID (in) 1.995	Wt (lb/ft) 4.70	Grade J-55	Len (ft) 7,188.02	Set De... 7,185.5	
Tubing Components									
Item Des	OD (in)	Wt (lb/ft)	Grade	Jts	Len (ft)	Btm (ftKB)	Btm (TVD) (ftKB)		
Tubing Pup Joint	2 3/8	4.70	J-55	1	10.00	17.0			
Tubing	2 3/8	4.70	J-55	233	7,176.37	7,193.4			
Pump Seating	2 3/8	4.70	J-55	1	1.20	7,194.6	7,185.1		
Notched collar	2 3/8	4.70	J-55	1	0.45	7,195.0	7,185.5		
Perforation Data									
Zone	Bnch/St g	Entered Shot Total	Top (ftKB)		Btm (ftKB)		Date		
CODELL, ORIGINAL HOLE		56	7,214.00		7,228.00		3/3/2009		
Stimulations & Treatments									
Date 3/11/2009	Zone CODELL, ORIGINAL HOLE			Primary Job Type DRILLING/COMPLETION - ORIGINAL					
Technical Result Success		Tech Result Details According to Plan			Tech Result Note				
Comment (CODELL ND DS): DURING 4 PSA STAGE SAND DROPPED TO 1.5 PSA, NOT A PROBLEM WITH THE SAND KING BUT A OPERATOR ISSUES.									
Other In Hole									
Run Date	Des				OD (in)	Top (ftKB)	Btm (ftKB)		
Logs									
Date	Type					Top, MD (ftKB)	Btm, MD (ftKB)		
2/17/2009	Caliper/Comp. Density/Neutron/GR/SP/ML					2,700.0	7,362.0		
2/17/2009	DIL/GR/SP/Caliper					493.0	7,382.0		

**Well Name: OTTOSON I12-25**

VERTICAL - ORIGINAL HOLE, 3/14/2016 4:35:32 PM

## Logs

