

# LEGEND:

- = 90° SYMBOL
- = PROPOSED WELLHEAD.
- = TARGET BOTTOM HOLE.
- = SECTION CORNERS LOCATED.
- = PROPOSED TOP OF PRODUCTION

**T10N, R58W, 6th P.M.**

Target  
Bottom Hole



R 58  
W 57

1917 Brass Cap,  
1.0' High  
Lat: 40.817086°  
Long: 103.803497°

N89°33'18"E - 2674.93' (Meas.)

N89°33'18"E - 2674.93' (Meas.)

2010 Alum. Cap,  
0.3' High, N/E Fence  
Lat: 40.816975°  
Long: 103.822819°

2012 Alum. Cap,  
0.4' High  
Lat: 40.817031°  
Long: 103.813158°

NOTE:  
THE PROPOSED TARGET BOTTOM HOLE FOR  
THIS WELL IS LOCATED IN THE NE 1/4 NE  
1/4 OF SECTION 24, T10N, R58W, 6th P.M.  
AT 100' FNL 330' FEL. IT BEARS  
N00°01'26"E 9880.68' FROM THE TOP OF  
PRODUCTION.

2012 Alum. Cap,  
0.1' High  
Lat: 40.809672°  
Long: 103.822617°

2012 Alum. Cap,  
Flush W/Ground  
Lat: 40.809803°  
Long: 103.803386°

## LINE TABLE

LINE	DIRECTION	LENGTH
L1	N16°58'17"E	320.21'

25

Top of  
Production

**RAZOR #25P-2448**

Elev. Ungraded Ground = 4744.3'

2010 Alum. Cap,  
Flush W/Ground,  
N/W Fence  
Lat: 40.802369°  
Long: 103.822411°

S89°15'31"W - 2670.99' (Meas.)

2012 Alum. Cap,  
0.2' High  
Lat: 40.802461°  
Long: 103.812767°

S89°15'31"W  
2670.99' (Meas.)

2010 Alum. Cap,  
Flush W/Ground  
Lat: 40.802556°  
Long: 103.803122°



PDOP = 1.3

NAD 83 (SURFACE LOCATION)	NAD 83 (TOP OF PRODUCTION)
LATITUDE = 40°48'12.14" (40.803372)	LATITUDE = 40°48'15.16" (40.804211)
LONGITUDE = 103°48'18.76" (103.805211)	LONGITUDE = 103°48'17.54" (103.804872)
NAD 27 (SURFACE LOCATION)	NAD 27 (TOP OF PRODUCTION)
LATITUDE = 40°48'12.19" (40.803386)	LATITUDE = 40°48'15.21" (40.804225)
LONGITUDE = 103°48'16.95" (103.804708)	LONGITUDE = 103°48'15.73" (103.804369)

## BASIS OF BEARINGS

BASIS OF BEARINGS IS A G.P.S. OBSERVATION

## BASIS OF ELEVATION

SPOT ELEVATION LOCATED AT THE NORTHEAST CORNER OF SECTION 15, T9N, R58W, 6th P.M. TAKEN FROM THE GATEHOOK SPRING, QUADRANGLE, COLORADO, WELD COUNTY, 7.5 MINUTE QUAD (TOPOGRAPHIC MAP) PUBLISHED BY THE UNITED STATES DEPARTMENT OF THE INTERIOR, GEOLOGICAL SURVEY. SAID ELEVATION IS MARKED AS BEING 4679 FEET.



## WHITING OIL & GAS CORP.

**RAZOR #25P-2448 (SURFACE LOCATION)**  
**SE 1/4 SE 1/4, SECTION 25, T10N, R58W, 6th P.M.**  
**WELD COUNTY, COLORADO**

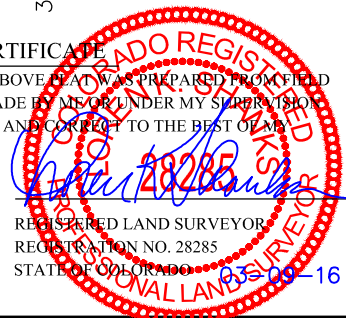
SURVEYED BY: CHAD MEIERS, C.M.	DATE: 03-13-15
DRAWN BY: J.A.	DATE DRAWN: 03-26-15
SCALE: 1" = 1000'	REVISED: 03-07-16 M.F.D.

## WELL LOCATION PLAT



**UELS, LLC**  
Corporate Office \* 85 South 200 East  
Vernal, UT 84078 \* (435) 789-1017

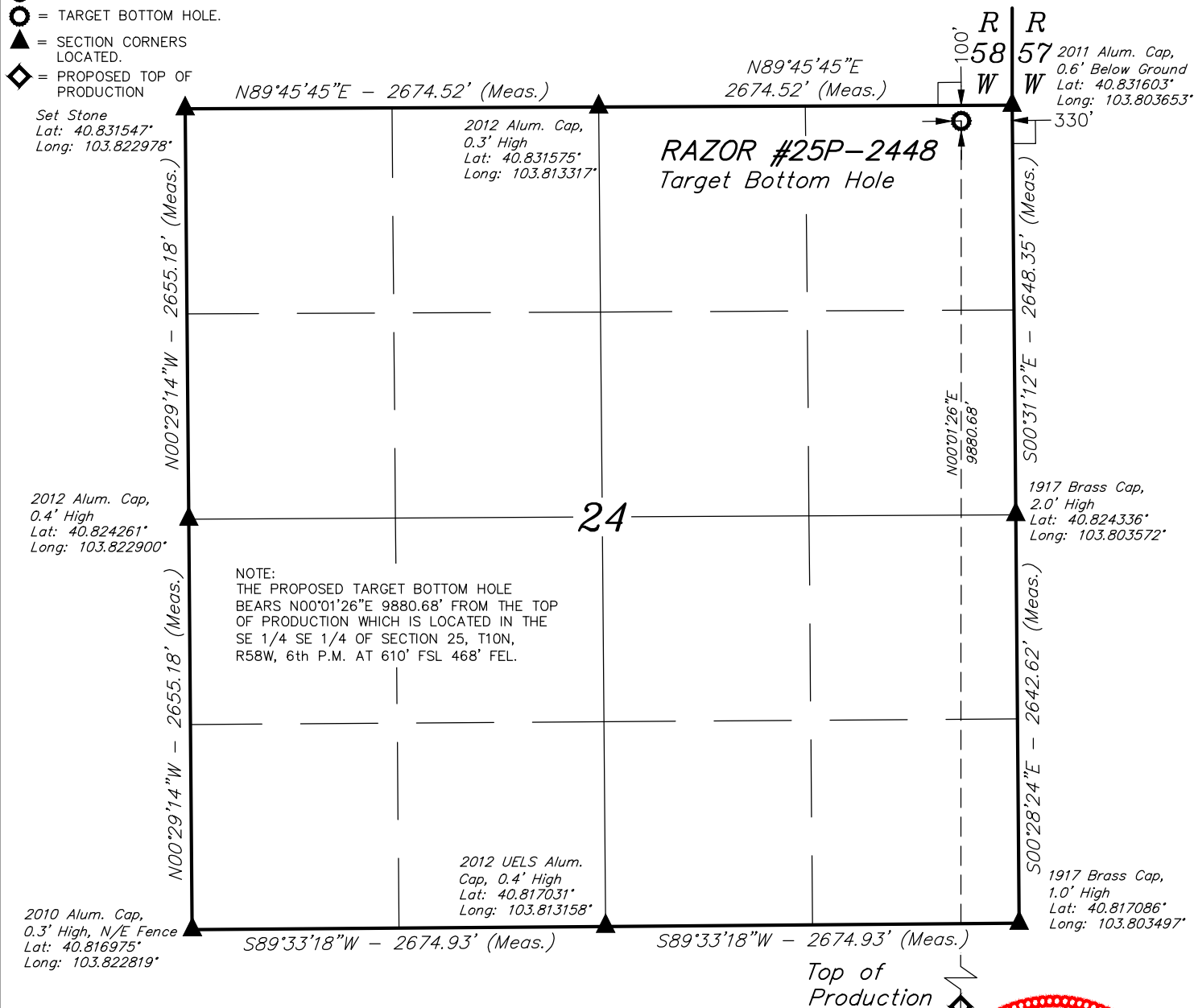
CERTIFICATE  
THIS IS TO CERTIFY THAT THE ABOVE PLAT WAS PREPARED FROM FIELD  
NOTES OF ACTUAL SURVEYS MADE BY ME OR UNDER MY SUPERVISION  
AND THAT THE SAME ARE TRUE AND CORRECT TO THE BEST OF MY  
KNOWLEDGE AND BELIEF.



# LEGEND:

- = 90° SYMBOL
- = PROPOSED WELLHEAD.
- = TARGET BOTTOM HOLE.
- ▲ = SECTION CORNERS LOCATED.
- ◆ = PROPOSED TOP OF PRODUCTION

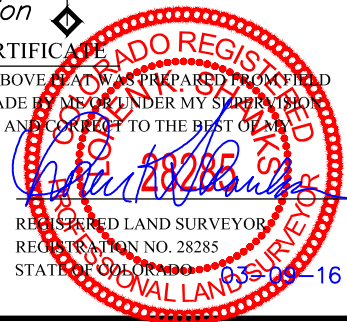
T10N, R58W, 6th P.M.



<b>NAD 83 (TARGET BOTTOM HOLE)</b>
LATITUDE = 40°49'52.77" (40.831325)
LONGITUDE = 103°48'17.44" (103.804844)
<b>NAD 27 (TARGET BOTTOM HOLE)</b>
LATITUDE = 40°49'52.82" (40.831339)
LONGITUDE = 103°48'15.63" (103.804342)



**CERTIFICATE**  
THIS IS TO CERTIFY THAT THE ABOVE PLAT WAS PREPARED FROM FIELD NOTES OF ACTUAL SURVEYS MADE BY ME OR UNDER MY SUPERVISION AND THAT THE SAME ARE TRUE AND CORRECT TO THE BEST OF MY KNOWLEDGE AND BELIEF.



**BASIS OF BEARINGS**  
BASIS OF BEARINGS IS A G.P.S. OBSERVATION

**BASIS OF ELEVATION**

SPOT ELEVATION LOCATED AT THE NORTHEAST CORNER OF SECTION 15, T9N, R58W, 6th P.M. TAKEN FROM THE GATEHOOK SPRING, QUADRANGLE, COLORADO, WELD COUNTY, 7.5 MINUTE QUAD (TOPOGRAPHIC MAP) PUBLISHED BY THE UNITED STATES DEPARTMENT OF THE INTERIOR, GEOLOGICAL SURVEY. SAID ELEVATION IS MARKED AS BEING 4679 FEET.



**WHITING OIL & GAS CORP.**

**RAZOR #25P-2448 (TARGET BOTTOM HOLE)**  
**NE 1/4 NE 1/4, SECTION 24, T10N, R58W, 6th P.M.**  
**WELD COUNTY, COLORADO**

SURVEYED BY: CHAD MEIERS, C.M.	DATE: 03-13-15
DRAWN BY: J.A.	DATE DRAWN: 03-26-15
SCALE: 1" = 1000'	REVISED: 03-07-16 M.F.D.

**WELL LOCATION PLAT**



**UELS, LLC**  
Corporate Office \* 85 South 200 East  
Vernal, UT 84078 \* (435) 789-1017