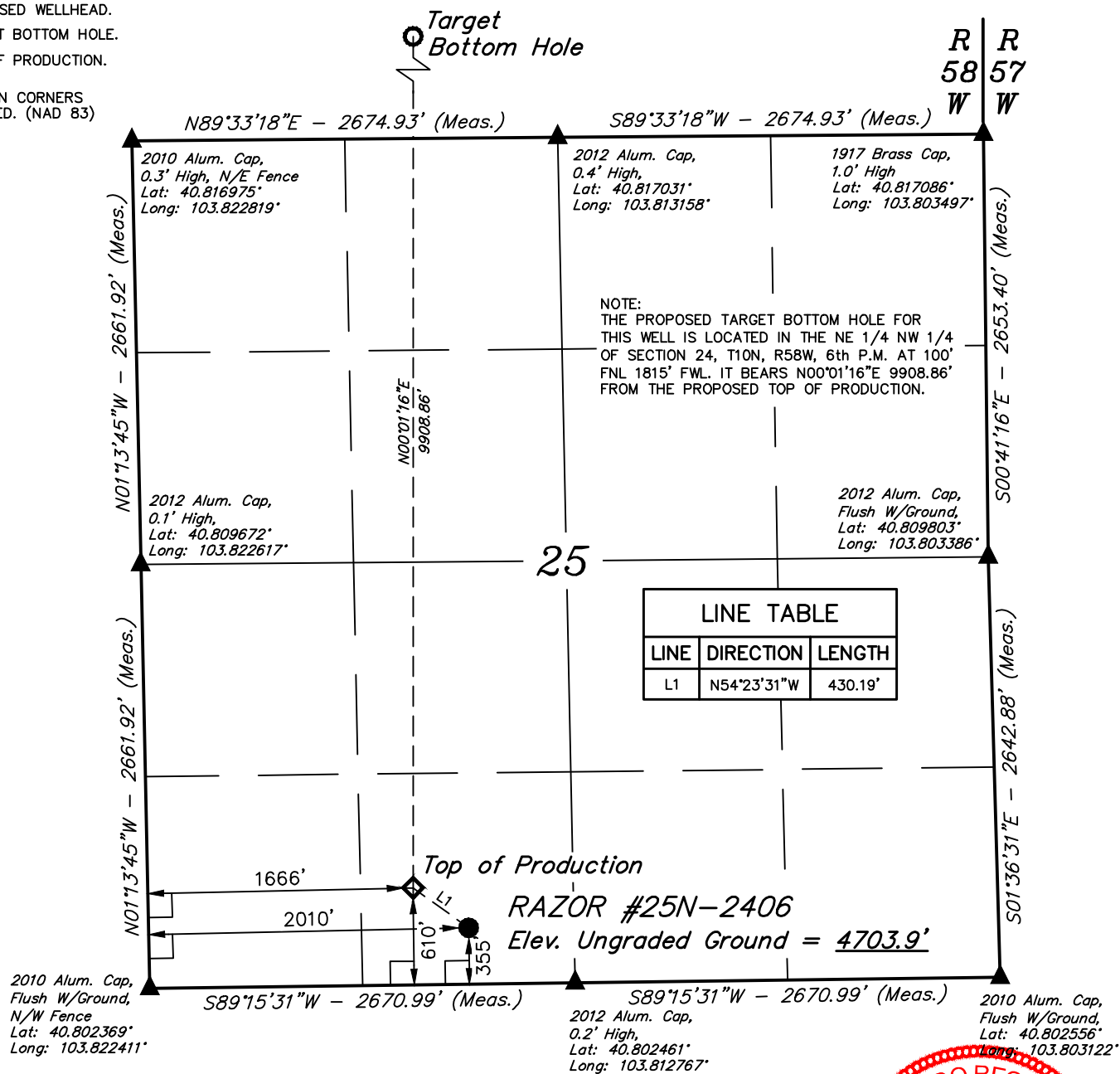


**LEGEND:**

- = 90° SYMBOL  
 ● = PROPOSED WELLHEAD.  
 ○ = TARGET BOTTOM HOLE.  
 ◇ = TOP OF PRODUCTION.  
 ▲ = SECTION CORNERS LOCATED. (NAD 83)

*T10N, R58W, 6th P.M.*



PDOP = 1.9



| NAD 83 (SURFACE LOCATION)               | NAD 83 (TOP OF PRODUCTION)              |
|---|---|
| LATITUDE = 40°48'12.29\" (40.803414)    | LATITUDE = 40°48'14.76\" (40.804100)    |
| LONGITUDE = 103°48'54.64\" (103.815178) | LONGITUDE = 103°48'59.19\" (103.816442) |
| NAD 27 (SURFACE LOCATION)               | NAD 27 (TOP OF PRODUCTION)              |
| LATITUDE = 40°48'12.34\" (40.803428)    | LATITUDE = 40°48'14.81\" (40.804114)    |
| LONGITUDE = 103°48'52.84\" (103.814678) | LONGITUDE = 103°48'57.38\" (103.815939) |

**BASIS OF BEARINGS**

BASIS OF BEARINGS IS A G.P.S. OBSERVATION

**BASIS OF ELEVATION**

SPOT ELEVATION LOCATED AT THE NORTHEAST CORNER OF SECTION 15, T9N, R58W, 6th P.M. TAKEN FROM THE GATEHOOK SPRING, QUADRANGLE, COLORADO, WELD COUNTY, 7.5 MINUTE QUAD (TOPOGRAPHIC MAP) PUBLISHED BY THE UNITED STATES DEPARTMENT OF THE INTERIOR, GEOLOGICAL SURVEY. SAID ELEVATION IS MARKED AS BEING 4679 FEET.

CERTIFICATE  
THIS IS TO CERTIFY THAT THE ABOVE PLAT WAS PREPARED FROM FIELD NOTES OF ACTUAL SURVEYS MADE BY ME OR UNDER MY SUPERVISION AND THAT THE SAME ARE TRUE AND CORRECT TO THE BEST OF MY KNOWLEDGE AND BELIEF.

REGISTERED LAND SURVEYOR  
REGISTRATION NO. 28285  
STATE OF COLORADO

**WHITING OIL & GAS CORP.**

**RAZOR #25N-2406 (SURFACE LOCATION)**  
SE 1/4 SW 1/4, SECTION 25, T10N, R58W, 6th P.M.  
WELD COUNTY, COLORADO

|                                |                        |
|--------------------------------|------------------------|
| SURVEYED BY: GREG WEIMER, C.J. | DATE: 03-11-15         |
| DRAWN BY: K.B.                 | DATE DRAWN: 03-18-15   |
| SCALE: 1" = 1000'              | REVISED: 03-07-16 M.D. |

**WELL LOCATION PLAT**

**UELS, LLC**  
Corporate Office \* 85 South 200 East  
Vernal, UT 84078 \* (435) 789-1017



**LEGEND:**

└─ = 90° SYMBOL

○ = TARGET BOTTOM HOLE.

◇ = TOP OF PRODUCTION.

▲ = SECTION CORNERS LOCATED. (NAD 83)

*T10N, R58W, 6th P.M.*

Set Stone,  
Lat: 40.831547°  
Long: 103.822978°

N89°45'45"E  
2674.52' (Meas.)

2012 Alum. Cap,  
0.3' High  
Lat: 40.831575°  
Long: 103.813317°

R  
58  
W  
R  
57  
W

N89°45'45"E - 2674.52' (Meas.)

2011 Alum. Cap,  
0.6' Below Ground  
Lat: 40.831603°  
Long: 103.803653°

N00°29'14"W - 2655.18' (Meas.)

2012 Alum. Cap,  
0.4 High  
Lat: 40.824261°  
Long: 103.822900°

**RAZOR #25N-2406**  
Target Bottom Hole

1917 Brass Cap,  
2.0' High  
Lat: 40.824336°  
Long: 103.803572°

24

N00°29'14"W - 2655.18' (Meas.)

2010 Alum. Cap,  
0.3' High, N/E Fence  
Lat: 40.816975°  
Long: 103.822819°

N00°01'16"E  
9908.86'

NOTE:  
THE PROPOSED TARGET BOTTOM HOLE  
BEARS N00°01'16"E 9908.86' FROM THE  
PROPOSED TOP OF PRODUCTION WHICH IS  
LOCATED IN THE SE 1/4 SW 1/4 OF  
SECTION 25, T10N, R58W, 6th P.M. AT 610'  
FSL 1666' FWL.

2012 Alum. Cap,  
0.4 High  
Lat: 40.817031°  
Long: 103.813158°

1917 Brass Cap,  
1.0' High  
Lat: 40.817086°  
Long: 103.803492°

N89°33'18"E - 2674.93' (Meas.)

S89°33'18"W - 2674.93' (Meas.)

Top of Production ◇

**NAD 83 (TARGET BOTTOM HOLE)**

LATITUDE = 40°49'52.65" (40.831292)  
LONGITUDE = 103°48'59.11" (103.816419)

**NAD 27 (TARGET BOTTOM HOLE)**

LATITUDE = 40°49'52.70" (40.831306)  
LONGITUDE = 103°48'57.30" (103.815917)



**BASIS OF BEARINGS**  
BASIS OF BEARINGS IS A G.P.S. OBSERVATION

**BASIS OF ELEVATION**

SPOT ELEVATION LOCATED AT THE NORTHEAST CORNER OF SECTION 15, T9N, R58W, 6th P.M. TAKEN FROM THE GATEHOOK SPRING, QUADRANGLE, COLORADO, WELD COUNTY, 7.5 MINUTE QUAD (TOPOGRAPHIC MAP) PUBLISHED BY THE UNITED STATES DEPARTMENT OF THE INTERIOR, GEOLOGICAL SURVEY. SAID ELEVATION IS MARKED AS BEING 4679 FEET.



**UELS, LLC**  
Corporate Office \* 85 South 200 East  
Vernal, UT 84078 \* (435) 789-1017

**CERTIFICATE**

THIS IS TO CERTIFY THAT THE ABOVE PLAT WAS PREPARED FROM FIELD NOTES OF ACTUAL SURVEYS MADE BY ME OR UNDER MY SUPERVISION AND THAT THE SAME ARE TRUE AND CORRECT TO THE BEST OF MY KNOWLEDGE AND BELIEF.

REGISTERED LAND SURVEYOR  
REGISTRATION NO. 28285  
STATE OF COLORADO

28285-16

**WHITING OIL & GAS CORP.**

**RAZOR #25N-2406 (TARGET BOTTOM HOLE)**  
**NE 1/4 NW 1/4, SECTION 24, T10N, R58W, 6th P.M.**  
**WELD COUNTY, COLORADO**

|                                |                        |
|--------------------------------|------------------------|
| SURVEYED BY: GREG WEIMER, C.J. | DATE: 03-11-15         |
| DRAWN BY: K.B.                 | DATE DRAWN: 03-18-15   |
| SCALE: 1" = 1000'              | REVISED: 03-07-16 M.D. |
| <b>WELL LOCATION PLAT</b>      |                        |