

# COLUMBINE LOGGING

Scale: 5" / 100'  
Measured Depth Log

**Well Name** Hester Farms L-36-HN

**Location** SEC 31 T7N R66W 1754' FNL 202' FEL

**State** Colorado

**County** Weld

**Country** United States

**Rig Number** Frontier (Utah) 8

**API Number** 05-123-42004

**Field** Wattenberg

**Geographic Region** DJ Basin

**Drilling Completed** 12/9/2015

**Spud Date** 12/5/2015

**Surface Coordinates** N 40.533168, W 104.831383

SEC 31, T7N, R66W  
1754' FNL 202' FEL

**Bottom Hole Coordinates** Projected:

SEC 36, T7N, R67W  
2470' FNL 470' FEL

**Ground Elevation** 4913'

**K.B. Elevation** 4936'

**Logged Interval** 6000' To 12000'

**Total Depth** 12000'

**Formation** Niobrara

**Type of Drilling Fluid** WBM

## Operator

**Company** Bayswater Exploration & Production, LLC.

**Address** 730 17th St.  
Denver, CO 80202



## Geologist

**Name** Mark E. Brown

**Company** Bayswater Exploration & Production, LLC.

**Address** 730 17th St.  
Denver, CO 80202

## Other

**Robert Davis** Senior Lead Wellsite Geologist

**Ben Katka** Wellsite Geologist

**Columbine Logging Computer** 148

**Bloodhound Unit** 331

Zone Color Coding

Oil

Note

Error

Condensate

Core

Water

Gas

Pressure

Seal

Oil Show

P PINPOINT

V VUGGY

Engineering

D DEAD

E EVEN

Q QUESTIONABLE

B BIT

S SPOTTED STAINING

C CONNECTION (UP)

Porosity

C CONNECTION (DOWN)

C CONNECTION GAS

F FENESTRAL

T TRIP GAS

F FRACTURE

I INTERFRACTURE

I INTERCRYSTALLINE

D DOWN TIME GAS

I INTEROOLITIC

M MOLDIC

O ORGANIC

C CORE - LOST

C CORE - RECOVERED

Rock Types

UNKNOWN

ANHYDRITE

BENTONITE

BRECCIA

CHALK

CEMENT

CHERT

CLAY CHOKE SANC

CLAYSTONE

COAL

CONGLOMERATE

DOLOMITTE

DOLOMITIC LIMESTONE

GRANITE

GYPSUM

IGNEOUS

SIDERITE or LIMONITE

LIMESTONE

MARLSTONE

METAMORPHIC

NO SAMPLE

SALT

SANDSTONE

SALT-PEPPER SANC

SHALE

SHALE COLORED

SHALE GRAY

SHALY SANDSTONE

SHALY SILTSTONE

SILTY SHALE

SILTSTONE

TILL

TUFF

WELDED TUFF

Accessories

GASTROPOD

INOCERAMUS

OOLITE

OSTRACOD

PELECYPOD

PELLET

PISOLITE

BRYOZOA

CEPHALOPOD

CORAL

CRINOID

ECHINOID

FISH

FORAMINIFERA

FOSSIL

ARGILLITE GRAIN

B BENTONITE

BIT BITUMENOUS SUBSTANCE

BRECCIA FRAGMENTS

C CALCAREOUS

CARBONACEOUS FLAKES

C CHERT

COAL - THIN BEDS

D DOLOMITIC

F FELDSPAR

FERRUGINOUS PELLET

F FERRUGINOUS

G GLAUCONITE

G GYPSIFEROUS

H HEAVY MINERAL

K KAOLIN

M MARCASITE

T MARLSTONE

M MICACEOUS

MINERAL CRYSTALS

N NODULES

PHOSPHATE PELLETS

P PYRITE

S SALT CAST

S SANDY

S SIDERITE

S SILTACEOUS

S SILTY

T TUFFACEOUS

ANHYDRITE STRINGER

B BENTONITE STRINGER

C COAL STRINGER

D DOLOMITE STRINGER

G GYPSUM STRINGER

L LIMESTONE STRINGER

MARLSTONE (CALO) STRG

M MARLSTONE STRINGER

S SANDSTONE STRINGER

S SHALE STRINGER

S SILTSTONE STRINGER

Fossils

Minerals

glist

# Other Symbols

 DST INTERVAL       WIRELINE TESTED - LEFT   **E** EARTHY

 FAULT       WIRELINE TESTED - RT    **FX** FINELYXLN

 FORMATION TOP       DRILL STEM TEST      **GS** GRAINSTONE

 GAS SHOW       **MNDEPTH** MN DEPTH      **L** LITHOGRAPHIC


 OIL SHOW      **MX** MICROXLN


 **MNDEPTH** MN DEPTH UP      **MS** MUDSTONE

## Rounding

 **MNDEPTH** MN DEPTH (DOWN)      **A** ANGULAR      **PS** PACKSTONE

 NORMAL FAULT      **R** ROUNDED      **WS** WACKSTONE

 **LEFT** OVERTURNED STRATA      **B** SUBANG


 REVERSE FAULT      **R** SUBRND

## Sorting

 CASING      **M** MODERATE

## Textures

 SIDEWALL CORE (LEFT)      **P** POOR

 **LEFT** SIDEWALL CORE (RIGHT) **BS** BOUNDSTONE      **W** WELL

 SLIDE      **C** CHALKY

 **BS** SURVEY      **CX** CRYPTOXLN

Slide/Rotate

COLUMBINE LOGGING RIGGED UP ON  
12/08/2015 MANNED 2-PERSON LOGGING.  
STARTED LOGGING AT 6000' @ 11:41 AM MDT  
12/08/2015.

ROP

ROP

Total Gas & Chromatograph

GAS

C1

C2

C3

C4

Depth Labels

% Lith

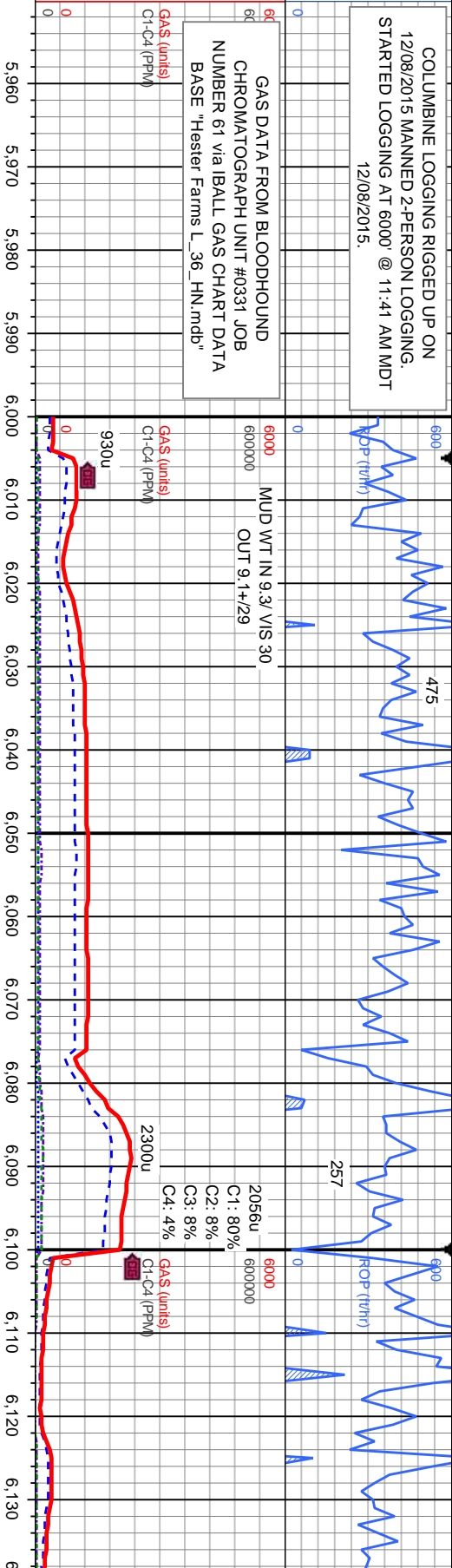
Gamma

GAMMA

Well Bore  
TVD

Oil Show

Images



SURVEY, GAMMA, and ROP DATA  
PROVIDED BY BAKER HUGHES

Bit Data

Bit #: 2  
Type: AT506S  
Size: 8.75  
Depth In: 1,560'  
Depth Out: 10,881'  
Hours: 36.4 hrs  
Avg Ft/Hr: 256.07' /hr  
Jets: 3/16 2/15  
S/N: 7046021

MD: 6.074'  
TVD: 6,013.81'  
Inclination: 0.46°  
Azimuth: 166.1°  
VS: 64.62'

SLTY SH: med-dk gy, silt-mic gr, sl frm, sb ply-pily, rthy-sb rthy tex, mot ip;  
SHY SLTST: lt-med gy, silt-vf gr, sl frm-hd, sb ply-sb biky, gt tex, arg cnt, sh  
incl, non calc, slow difse, mod stimg, bl cut, mod even ring

SLTY SH: med-dk gy, silt-r  
SHY SLTST: lt-med gy, silt-r  
incl, non calc, slow difse, r

E  
G  
M  
F  
T  
S

E  
G  
M  
F  
T  
S

E  
G  
M  
F  
T  
S

E  
G  
M  
F  
T  
S

E  
G  
M  
F  
T  
S

E  
G  
M  
F  
T  
S

E  
G  
M  
F  
T  
S

E  
G  
M  
F  
T  
S

E  
G  
M  
F  
T  
S

E  
G  
M  
F  
T  
S

E  
G  
M  
F  
T  
S

E  
G  
M  
F  
T  
S

E  
G  
M  
F  
T  
S

E  
G  
M  
F  
T  
S

E  
G  
M  
F  
T  
S

E  
G  
M  
F  
T  
S

E  
G  
M  
F  
T  
S

E  
G  
M  
F  
T  
S

E  
G  
M  
F  
T  
S

E  
G  
M  
F  
T  
S

E  
G  
M  
F  
T  
S

E  
G  
M  
F  
T  
S

E  
G  
M  
F  
T  
S

E  
G  
M  
F  
T  
S

E  
G  
M  
F  
T  
S

E  
G  
M  
F  
T  
S

E  
G  
M  
F  
T  
S

E  
G  
M  
F  
T  
S

E  
G  
M  
F  
T  
S

E  
G  
M  
F  
T  
S

E  
G  
M  
F  
T  
S

E  
G  
M  
F  
T  
S

E  
G  
M  
F  
T  
S

E  
G  
M  
F  
T  
S

E  
G  
M  
F  
T  
S

E  
G  
M  
F  
T  
S

E  
G  
M  
F  
T  
S

E  
G  
M  
F  
T  
S

E  
G  
M  
F  
T  
S

E  
G  
M  
F  
T  
S

E  
G  
M  
F  
T  
S

E  
G  
M  
F  
T  
S

E  
G  
M  
F  
T  
S

E  
G  
M  
F  
T  
S

E  
G  
M  
F  
T  
S

E  
G  
M  
F  
T  
S

E  
G  
M  
F  
T  
S

E  
G  
M  
F  
T  
S

E  
G  
M  
F  
T  
S

E  
G  
M  
F  
T  
S

E  
G  
M  
F  
T  
S

E  
G  
M  
F  
T  
S

E  
G  
M  
F  
T  
S

E  
G  
M  
F  
T  
S

E  
G  
M  
F  
T  
S

E  
G  
M  
F  
T  
S

E  
G  
M  
F  
T  
S

E  
G  
M  
F  
T  
S

E  
G  
M  
F  
T  
S

E  
G  
M  
F  
T  
S

E  
G  
M  
F  
T  
S

E  
G  
M  
F  
T  
S

E  
G  
M  
F  
T  
S

E  
G  
M  
F  
T  
S

E  
G  
M  
F  
T  
S

E  
G  
M  
F  
T  
S

E  
G  
M  
F  
T  
S

E  
G  
M  
F  
T  
S

E  
G  
M  
F  
T  
S

E  
G  
M  
F  
T  
S

E  
G  
M  
F  
T  
S

E  
G  
M  
F  
T  
S

E  
G  
M  
F  
T  
S

E  
G  
M  
F  
T  
S

E  
G  
M  
F  
T  
S

E  
G  
M  
F  
T  
S

E  
G  
M  
F  
T  
S

E  
G  
M  
F  
T  
S

E  
G  
M  
F  
T  
S

E  
G  
M  
F  
T  
S

E  
G  
M  
F  
T  
S

E  
G  
M  
F  
T  
S

E  
G  
M  
F  
T  
S

E  
G  
M  
F  
T  
S

E  
G  
M  
F  
T  
S

E  
G  
M  
F  
T  
S

E  
G  
M  
F  
T  
S

E  
G  
M  
F  
T  
S

E  
G  
M  
F  
T  
S

E  
G  
M  
F  
T  
S

E  
G  
M  
F  
T  
S

E  
G  
M  
F  
T  
S

E  
G  
M  
F  
T  
S

E  
G  
M  
F  
T  
S

E  
G  
M  
F  
T  
S

E  
G  
M  
F  
T  
S

E  
G  
M  
F  
T  
S

E  
G  
M  
F  
T  
S

E  
G  
M  
F  
T  
S

E  
G  
M  
F  
T  
S

E  
G  
M  
F  
T  
S

E  
G  
M  
F  
T  
S

E  
G  
M  
F  
T  
S

E  
G  
M  
F  
T  
S

E  
G  
M  
F  
T  
S

E  
G  
M  
F  
T  
S

E  
G  
M  
F  
T  
S

E  
G  
M  
F  
T  
S

E  
G  
M  
F  
T  
S

E  
G  
M  
F  
T  
S

E  
G  
M  
F  
T  
S

E  
G  
M  
F  
T  
S

E  
G  
M  
F  
T  
S

E  
G  
M  
F  
T  
S

E  
G  
M  
F  
T  
S

E  
G  
M  
F  
T  
S

E  
G  
M  
F  
T  
S

E  
G  
M  
F  
T  
S

E  
G  
M  
F  
T  
S

E  
G  
M  
F  
T  
S

E  
G  
M  
F  
T  
S

E  
G  
M  
F  
T  
S

E  
G  
M  
F  
T  
S

E  
G  
M  
F  
T  
S

E  
G  
M  
F  
T  
S

E  
G  
M  
F  
T  
S

E  
G  
M  
F  
T  
S

E  
G  
M  
F  
T  
S

E  
G  
M  
F  
T  
S

E  
G  
M  
F  
T  
S

E  
G  
M  
F  
T  
S

E  
G  
M  
F  
T  
S

E  
G  
M  
F  
T  
S

E  
G  
M  
F  
T  
S

E  
G  
M  
F  
T  
S

E  
G  
M  
F  
T  
S

E  
G  
M  
F  
T  
S

E  
G  
M  
F  
T  
S

E  
G  
M  
F  
T  
S

E  
G  
M  
F  
T  
S

E  
G  
M  
F  
T  
S

E  
G  
M  
F  
T  
S

E  
G  
M  
F  
T  
S

E  
G  
M  
F  
T  
S

E  
G  
M  
F  
T  
S

E  
G  
M  
F  
T  
S

E  
G  
M  
F  
T  
S

E  
G  
M  
F  
T  
S

E  
G  
M  
F  
T  
S

E  
G  
M  
F  
T  
S

E  
G  
M  
F  
T  
S

E  
G  
M  
F  
T  
S

E  
G  
M  
F  
T  
S

E  
G  
M  
F  
T  
S

E  
G  
M  
F  
T  
S

E  
G  
M  
F  
T  
S

E  
G  
M  
F  
T  
S

E  
G  
M  
F  
T  
S

E  
G  
M  
F  
T  
S

E  
G  
M  
F  
T  
S

E  
G  
M  
F  
T  
S

E  
G  
M  
F  
T  
S

E  
G  
M  
F  
T  
S

E  
G  
M  
F  
T  
S

E  
G  
M  
F  
T  
S

E  
G  
M  
F  
T  
S

E  
G  
M  
F  
T  
S

E  
G  
M  
F  
T  
S

E  
G  
M  
F  
T  
S

E  
G  
M  
F  
T  
S

E  
G  
M  
F  
T  
S

E  
G  
M  
F  
T  
S

E  
G  
M  
F  
T  
S

E  
G  
M  
F  
T  
S

E  
G  
M  
F  
T  
S

E  
G  
M  
F  
T  
S

E  
G  
M  
F  
T  
S

E  
G  
M  
F  
T  
S

E  
G  
M  
F  
T  
S

E  
G  
M  
F  
T  
S

E  
G  
M  
F  
T  
S

E  
G  
M  
F  
T  
S

E  
G  
M  
F  
T  
S

E  
G  
M  
F  
T  
S

E  
G  
M  
F  
T  
S

E  
G  
M  
F  
T  
S

E  
G  
M  
F  
T  
S

E  
G  
M  
F  
T  
S

E  
G  
M  
F  
T  
S

E  
G  
M  
F  
T  
S

E  
G  
M  
F  
T  
S

E  
G  
M  
F  
T  
S

E  
G  
M  
F  
T  
S

E  
G  
M  
F  
T  
S

E  
G  
M  
F  
T  
S

E  
G  
M  
F  
T  
S

E  
G  
M  
F  
T  
S

E  
G  
M  
F  
T  
S

E  
G  
M  
F  
T  
S

E  
G  
M  
F  
T  
S

E  
G  
M  
F  
T  
S

E  
G  
M  
F  
T  
S

E  
G  
M  
F  
T  
S

E  
G  
M  
F  
T  
S

E  
G  
M  
F  
T  
S

E  
G  
M  
F  
T  
S

E  
G  
M  
F  
T  
S

E  
G  
M  
F  
T  
S

E  
G  
M  
F  
T  
S

E  
G  
M  
F  
T  
S

E  
G  
M  
F  
T  
S

E  
G  
M  
F  
T  
S

E  
G  
M  
F  
T  
S

E  
G  
M  
F  
T  
S

E  
G  
M  
F  
T  
S

E  
G  
M  
F  
T  
S

E  
G  
M  
F  
T  
S

E  
G  
M  
F  
T  
S

E  
G  
M  
F  
T  
S

E  
G  
M  
F  
T  
S

E  
G  
M  
F  
T  
S

E  
G  
M  
F  
T  
S

E  
G  
M  
F  
T  
S

E  
G  
M  
F  
T  
S

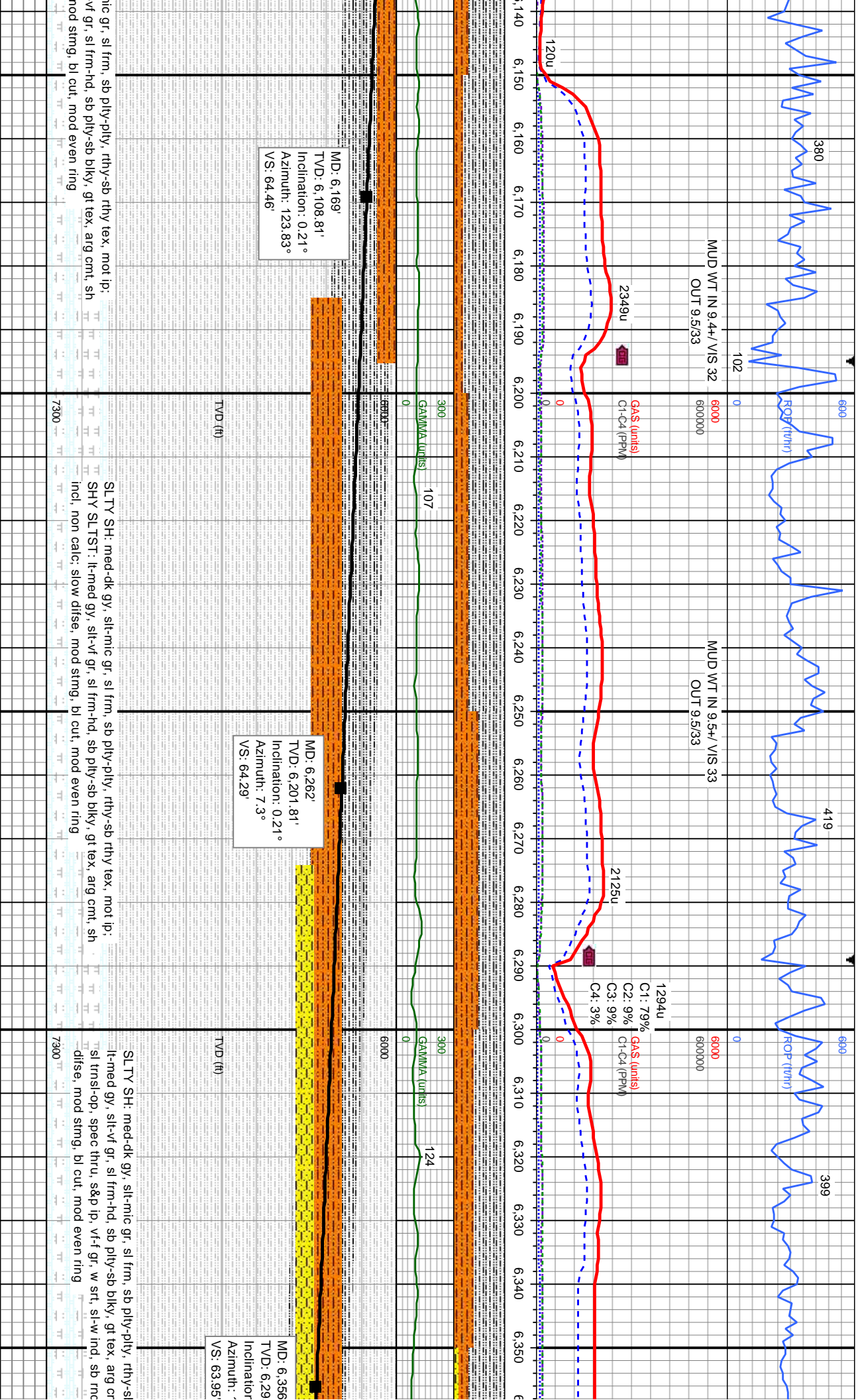
E  
G  
M  
F  
T  
S

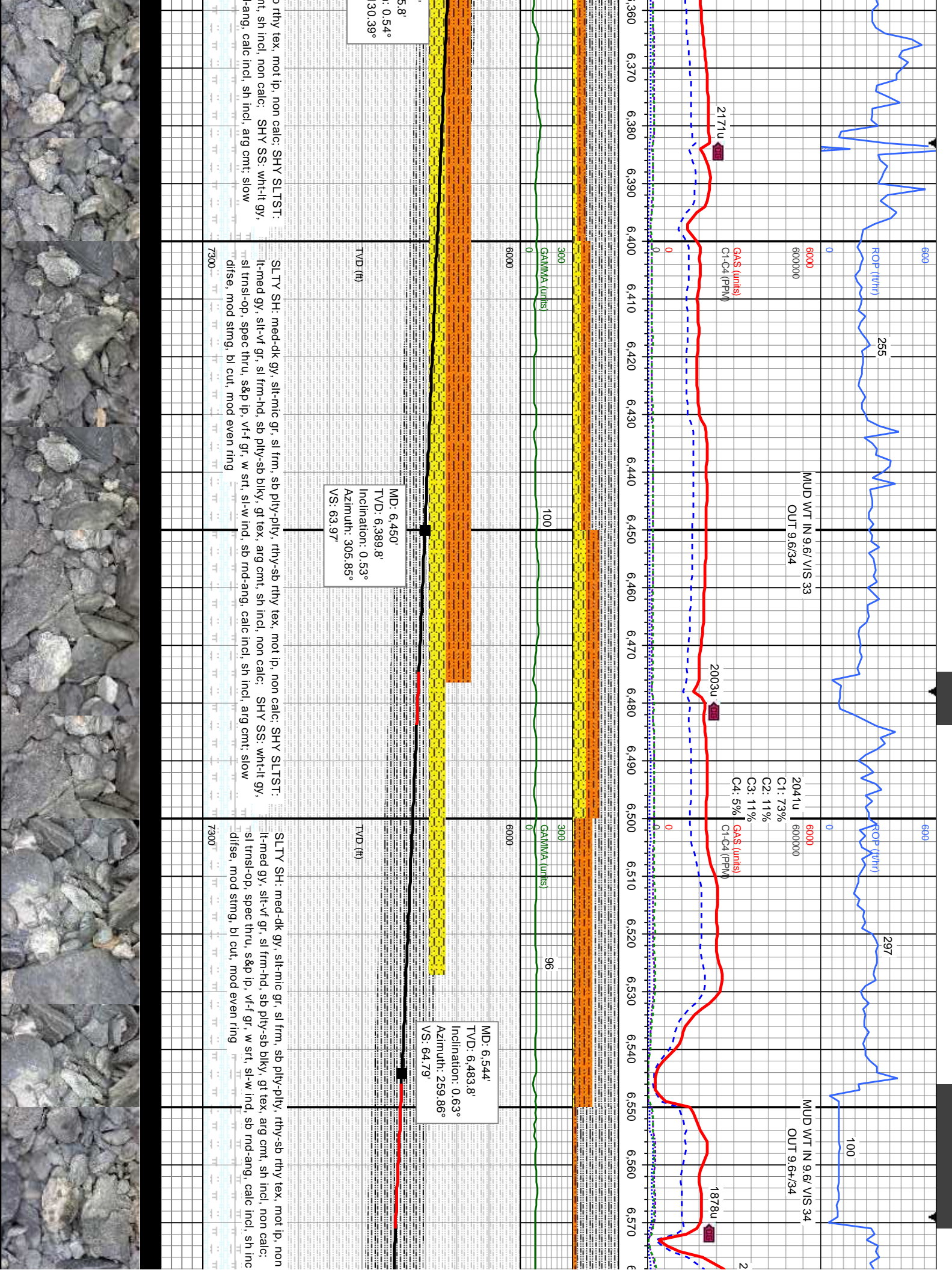
E  
G  
M  
F  
T  
S

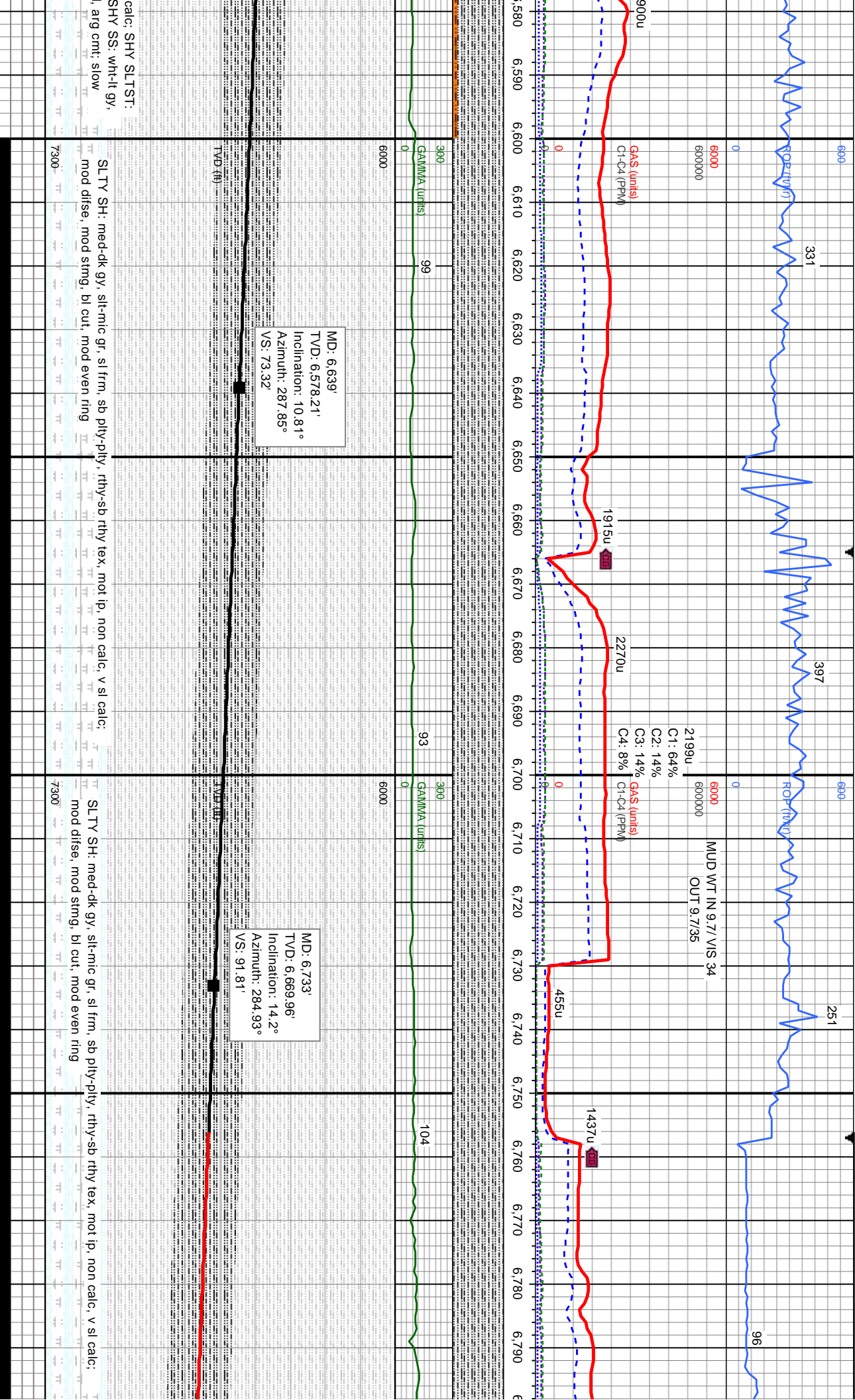
E  
G  
M  
F  
T  
S

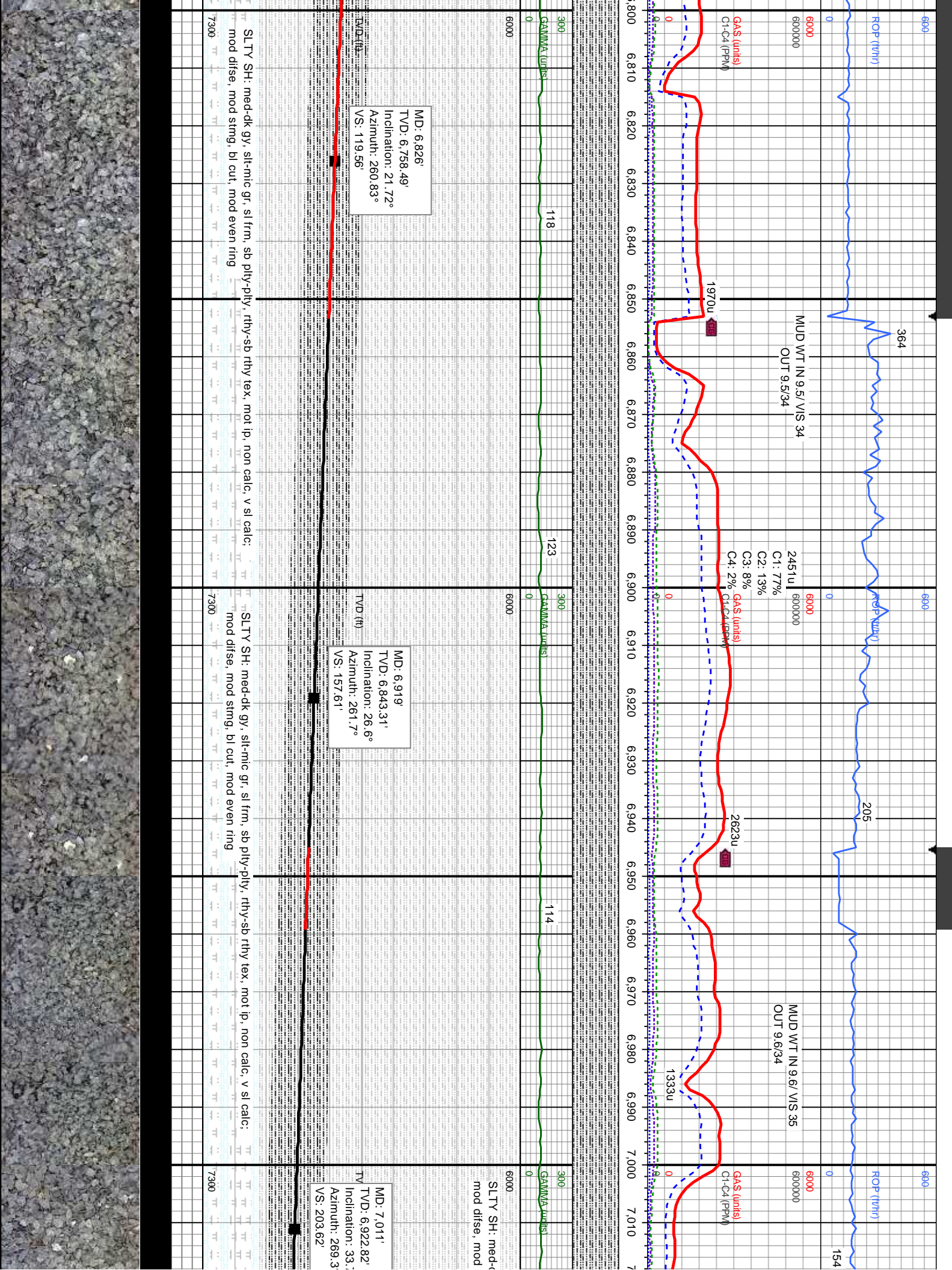
E  
G  
M  
F  
T  
S

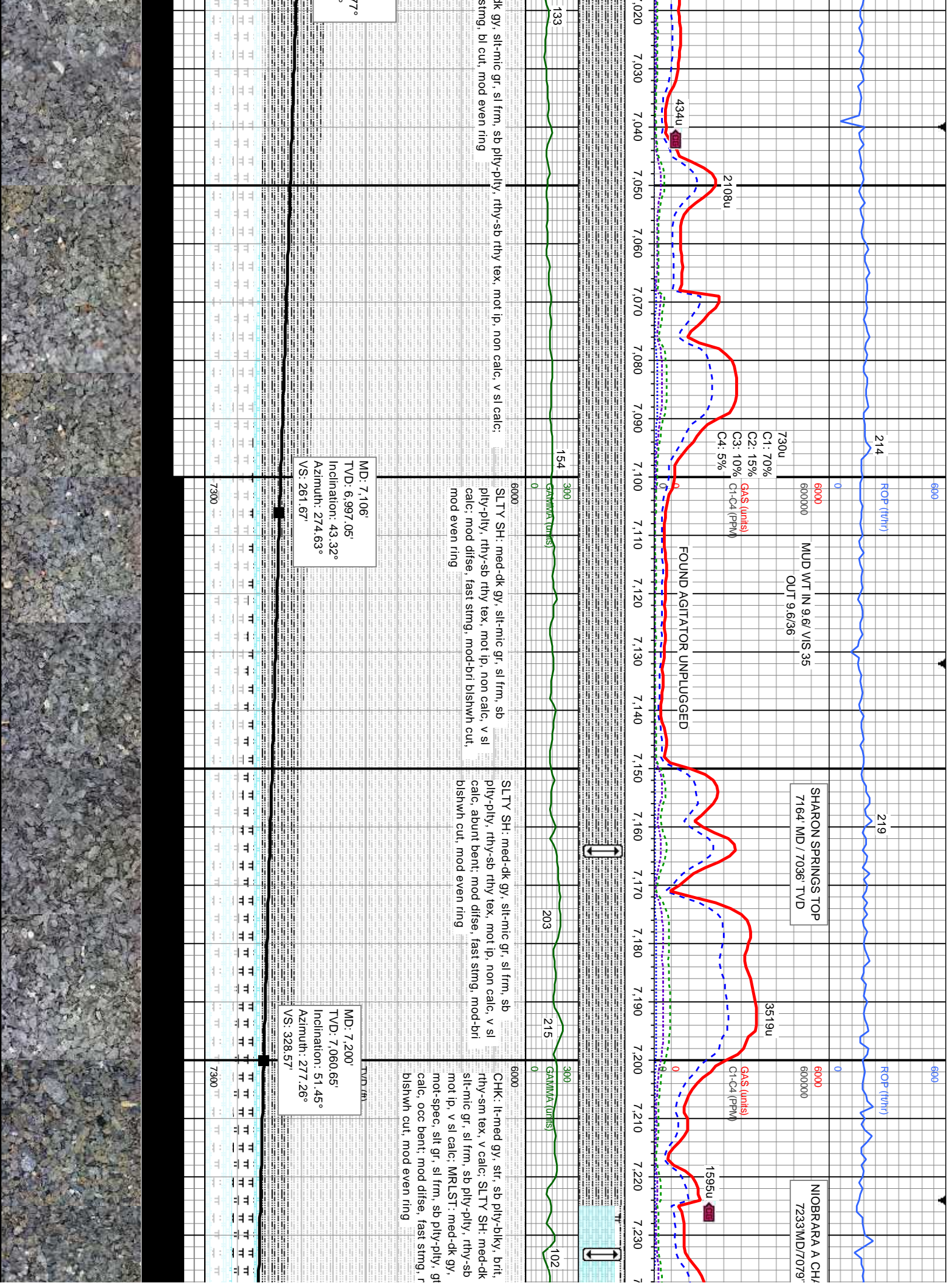
E  
G  
M  
F  
T  
S

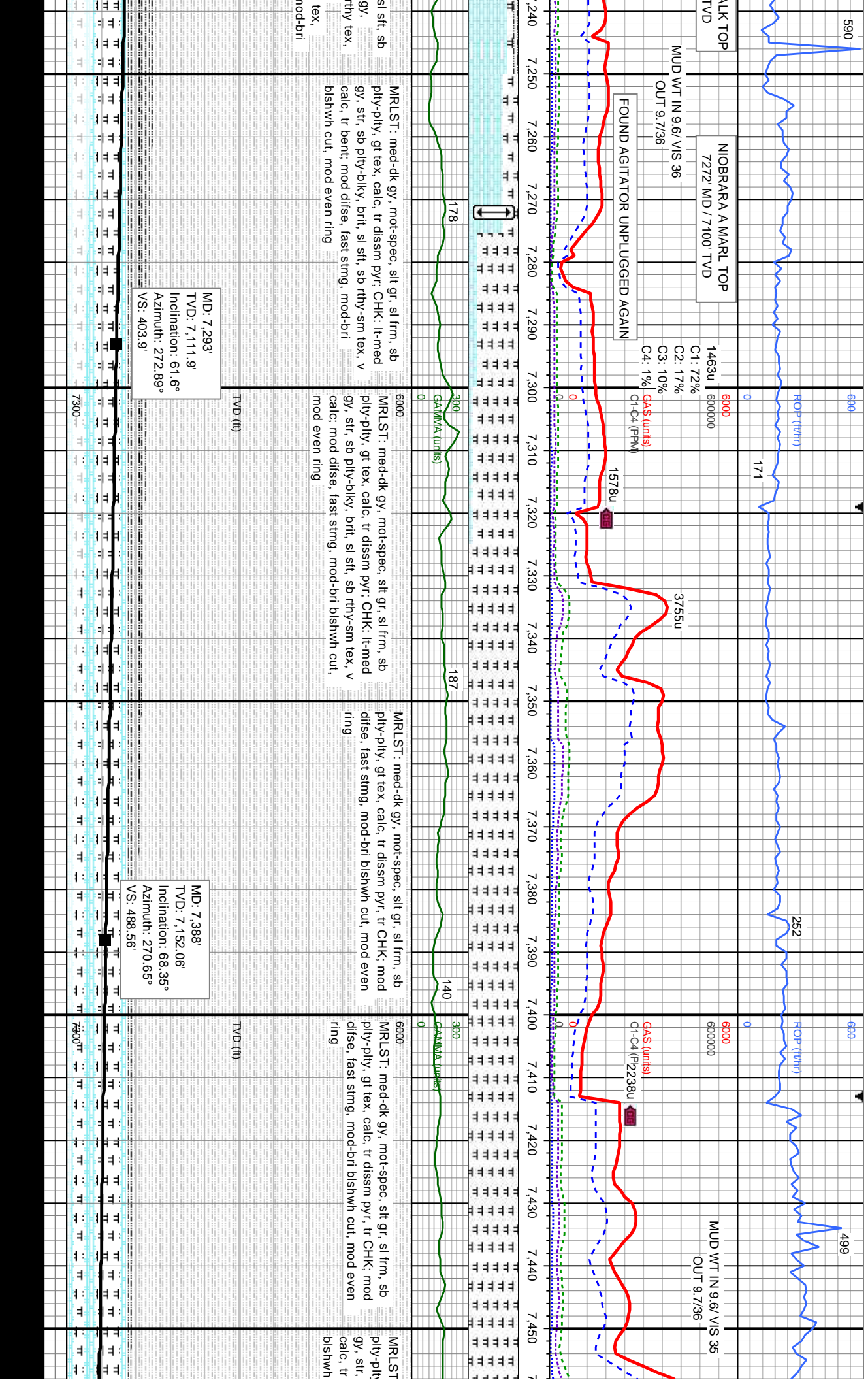






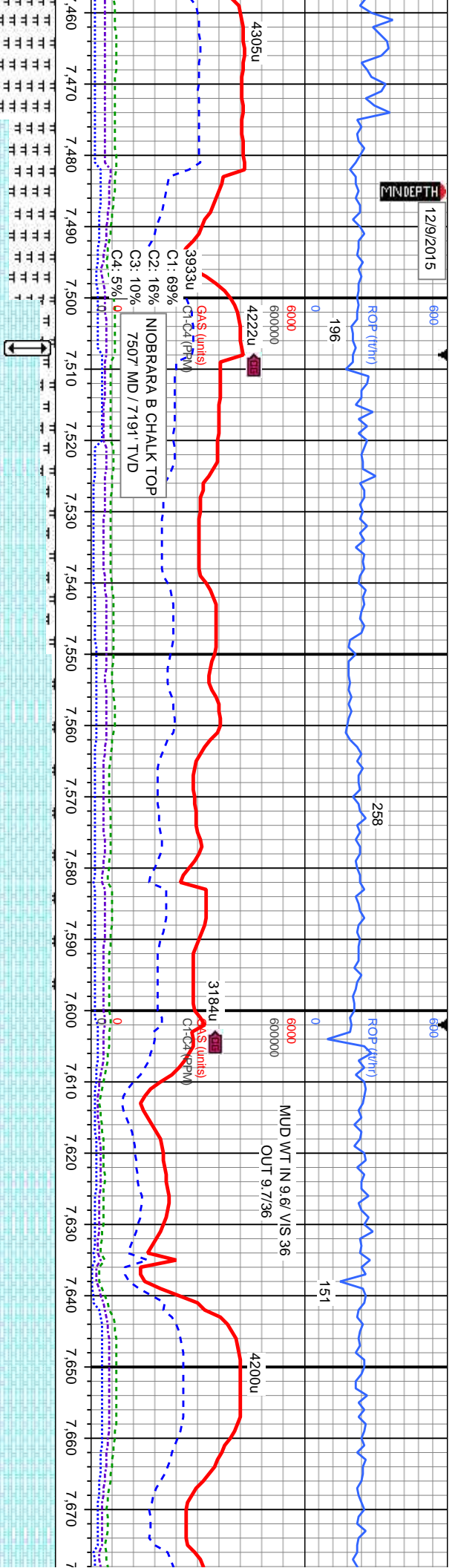






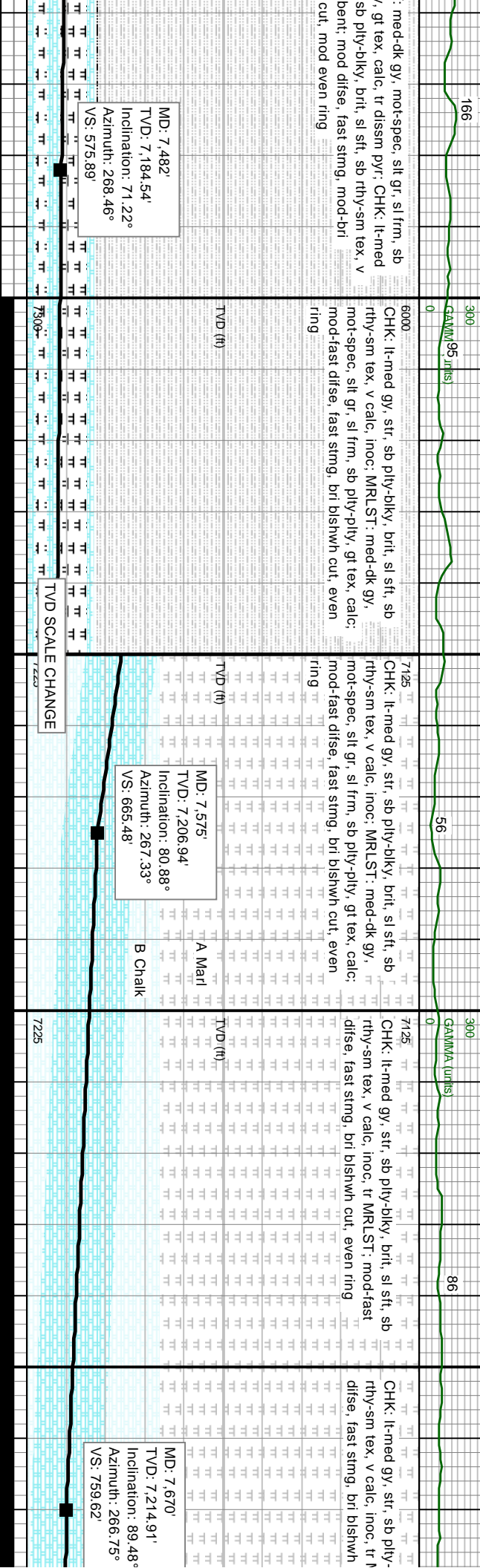
12/9/2015

MINDEPTH



med-dk gy, mot-spec, slt gr, sl frm, sb  
/, gt tex, calc, tr dissim pyr. CHK: lt-med  
sb pily-biky, brlt, sl stf, sb rthy-sm tex, v  
bent; mod difse, fast stimg, mod bri  
cut, mod even ring

MD: 7,482'  
TVD: 7,184.54'  
Inclination: 71.22°  
Azimuth: 268.46°  
VS: 575.89'



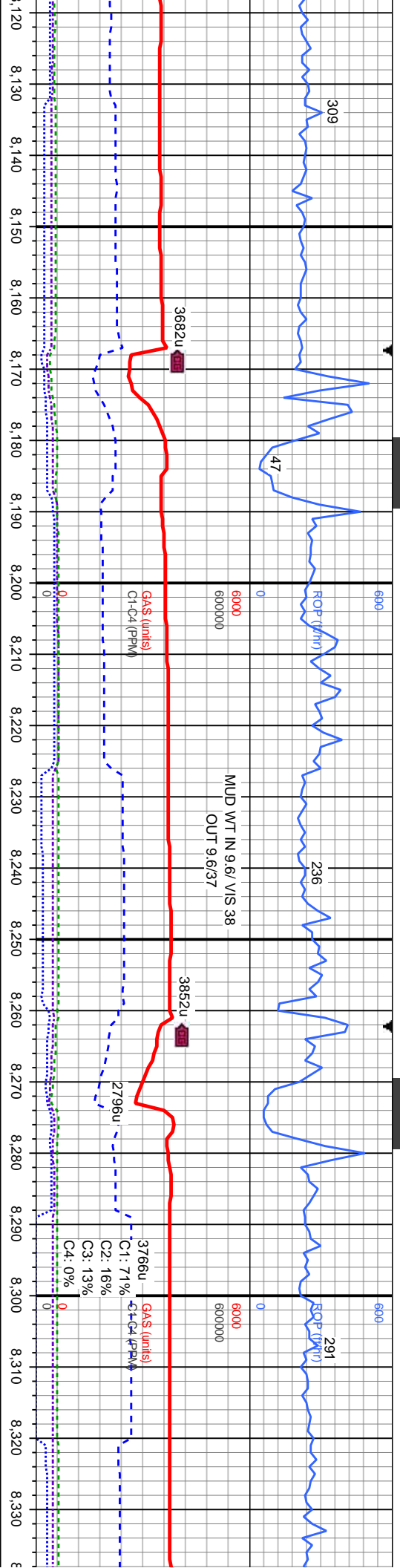
MD: 7,575'  
TVD: 7,206.94'  
Inclination: 80.88°  
Azimuth: 267.33°  
VS: 665.48'

TVD SCALE CHANGE





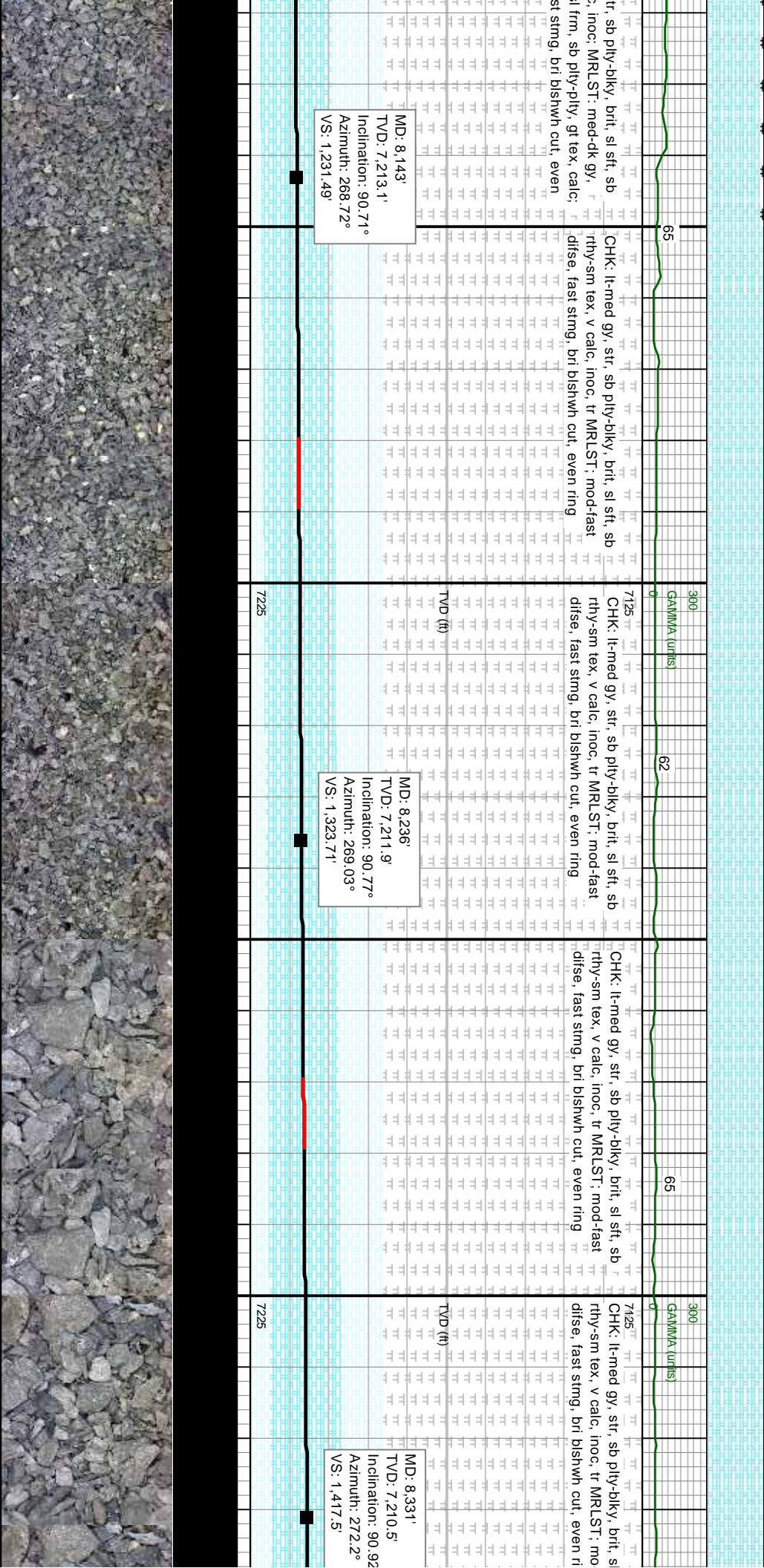




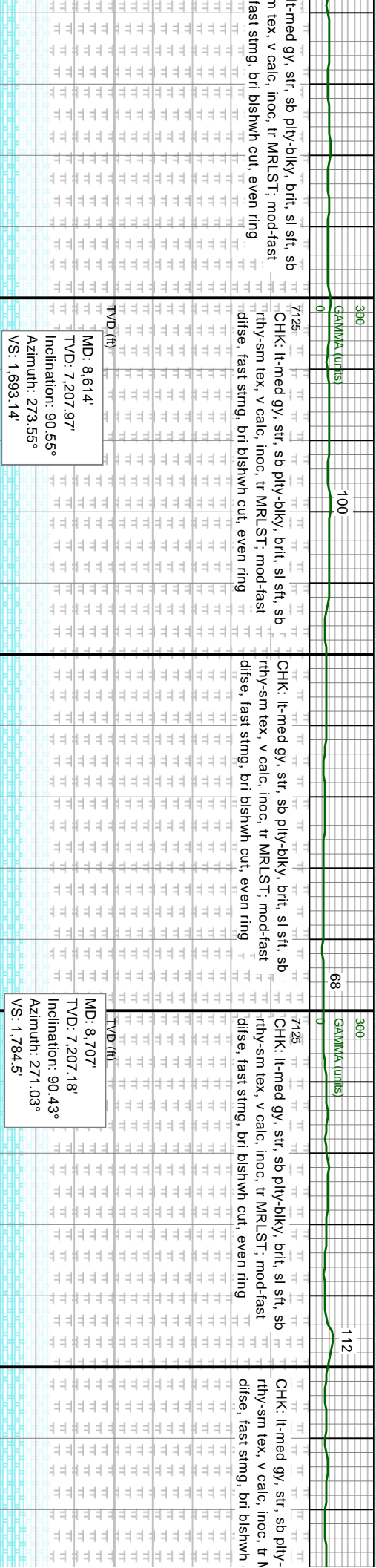
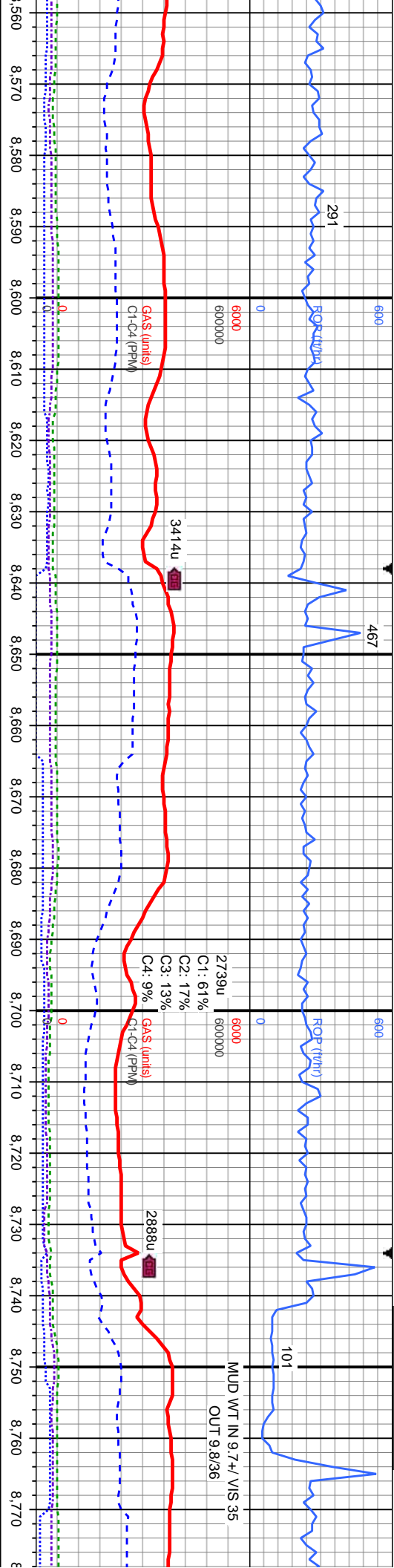
MD: 8.143'  
TVD: 7.213.1'  
Inclination: 90.71°  
Azimuth: 268.72°  
VS: 1.231.49'

MD: 8.236'  
TVD: 7.211.9'  
Inclination: 90.77°  
Azimuth: 269.03°  
VS: 1.323.71'

MD: 8.331'  
TVD: 7.210.5'  
Inclination: 90.92°  
Azimuth: 272.2°  
VS: 1.417.5'

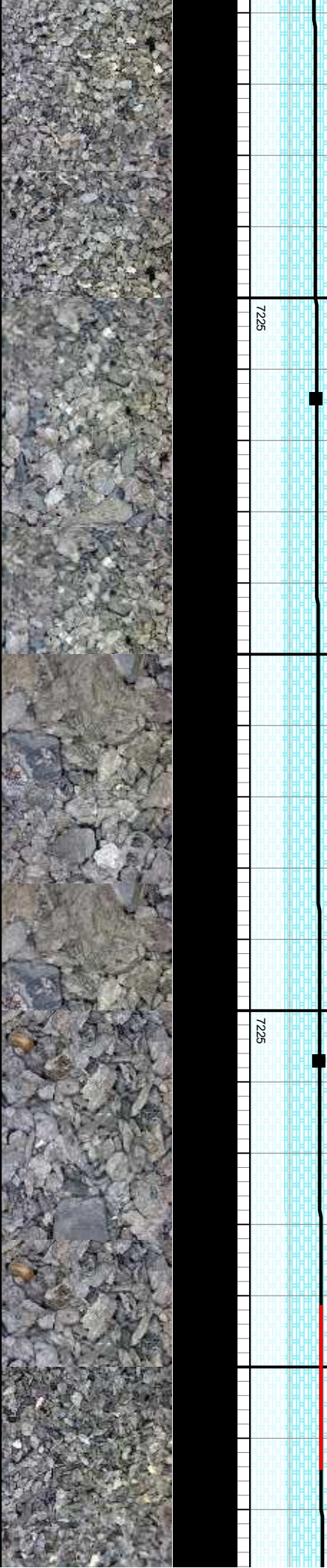


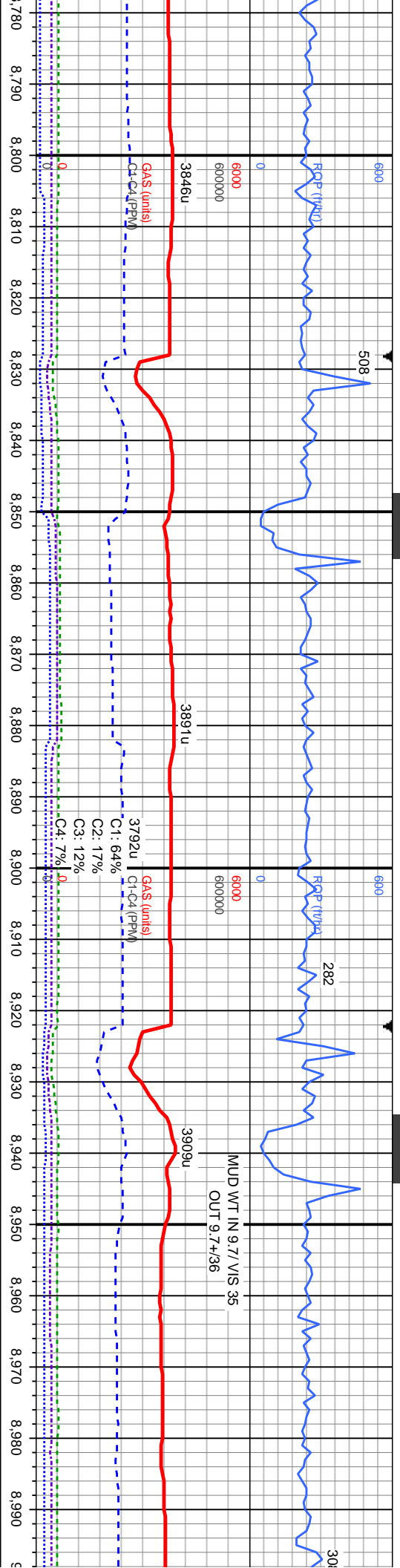




MD: 8,614'  
TVD: 7,207.97'  
Inclination: 90.55°  
Azimuth: 273.55°  
VS: 1,693.14'

MD: 8,707'  
TVD: 7,207.18'  
Inclination: 90.43°  
Azimuth: 271.03°  
VS: 1,784.5'

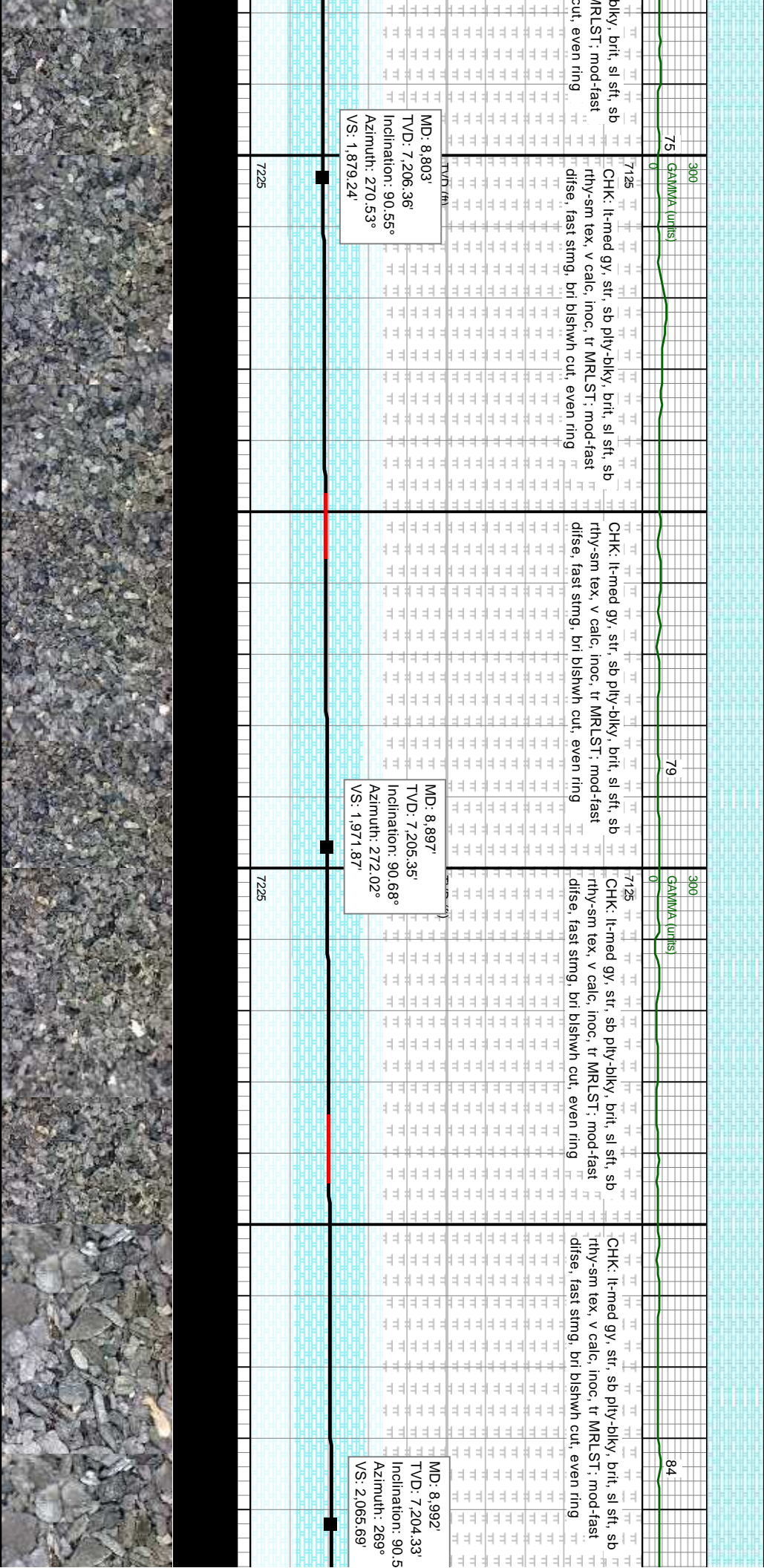




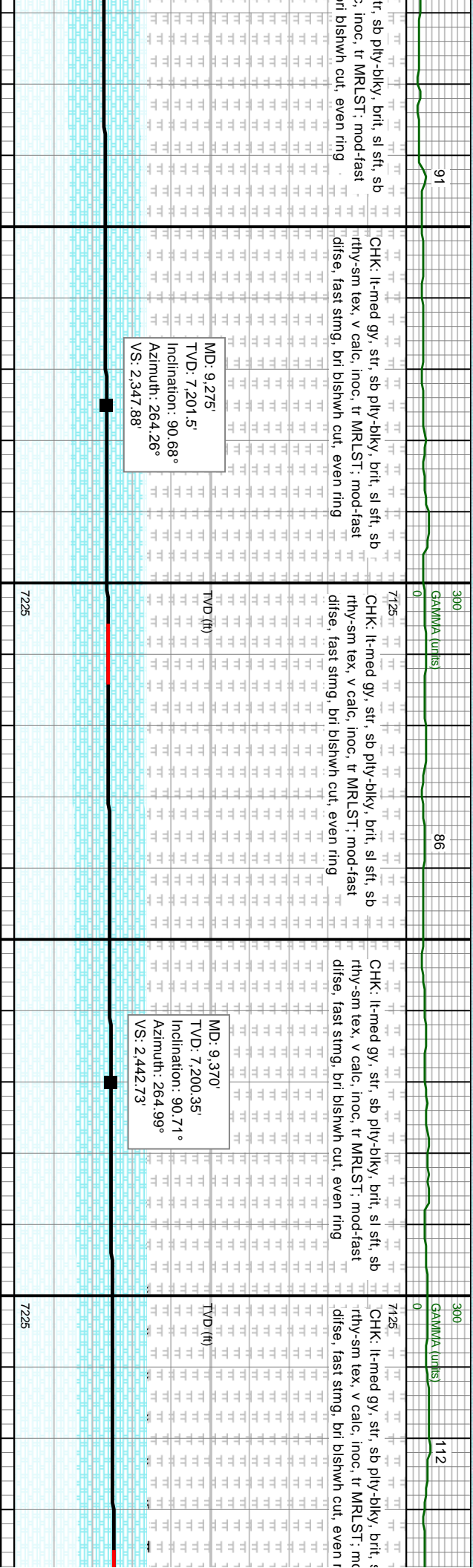
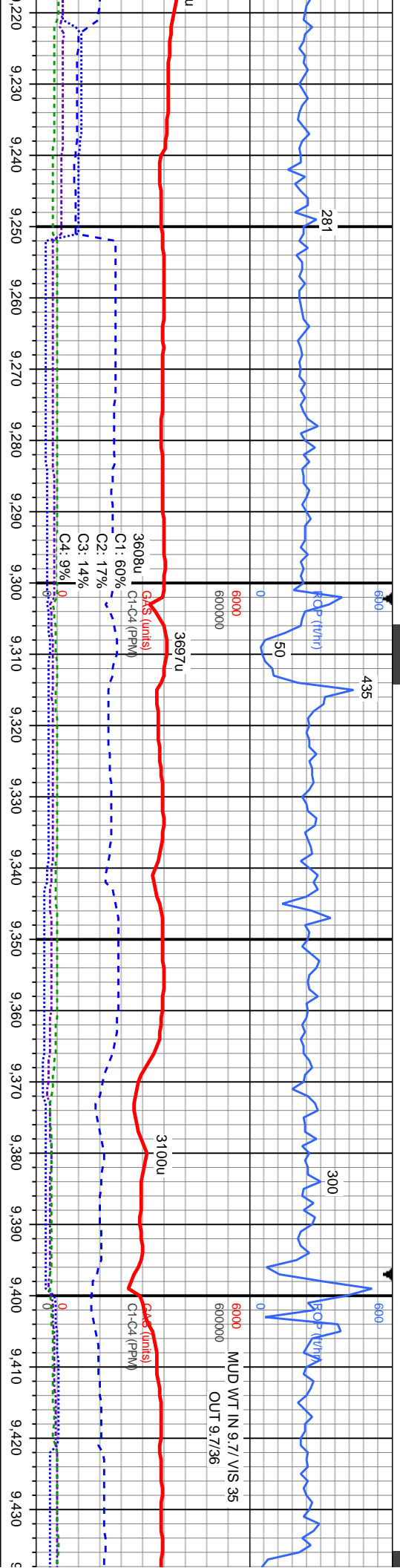
MD: 8.803'  
TVD: 7,206.36'  
Inclination: 90.56°  
Azimuth: 270.53°  
VS: 1,879.24'

MD: 8.897'  
TVD: 7,205.35'  
Inclination: 90.68°  
Azimuth: 272.02°  
VS: 1,971.87'

MD: 8.992'  
TVD: 7,204.33'  
Inclination: 90.5°  
Azimuth: 269°  
VS: 2,065.69'

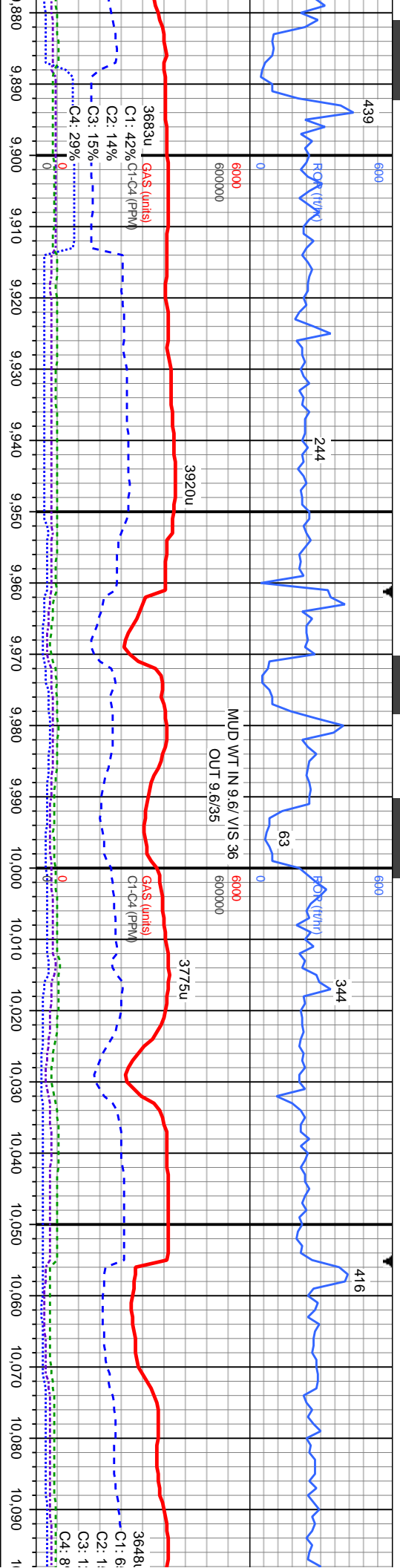




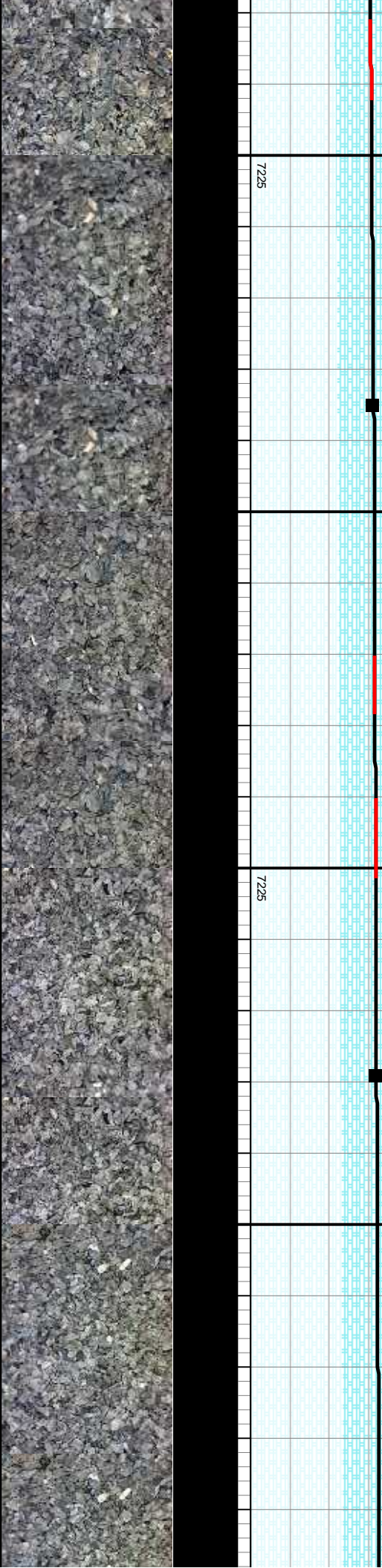


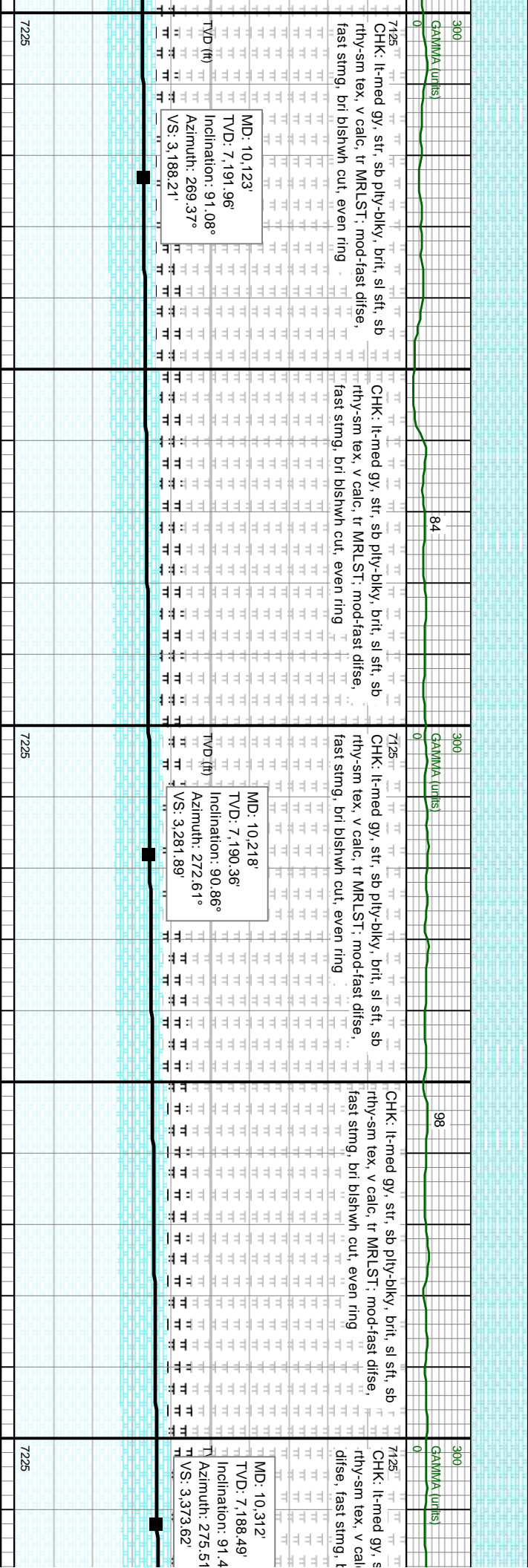
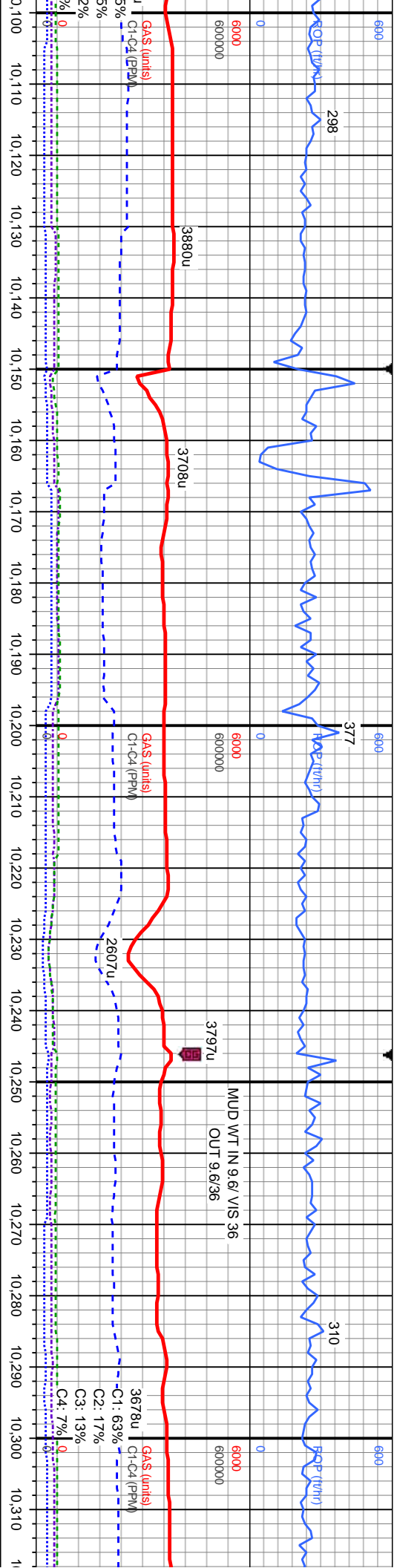


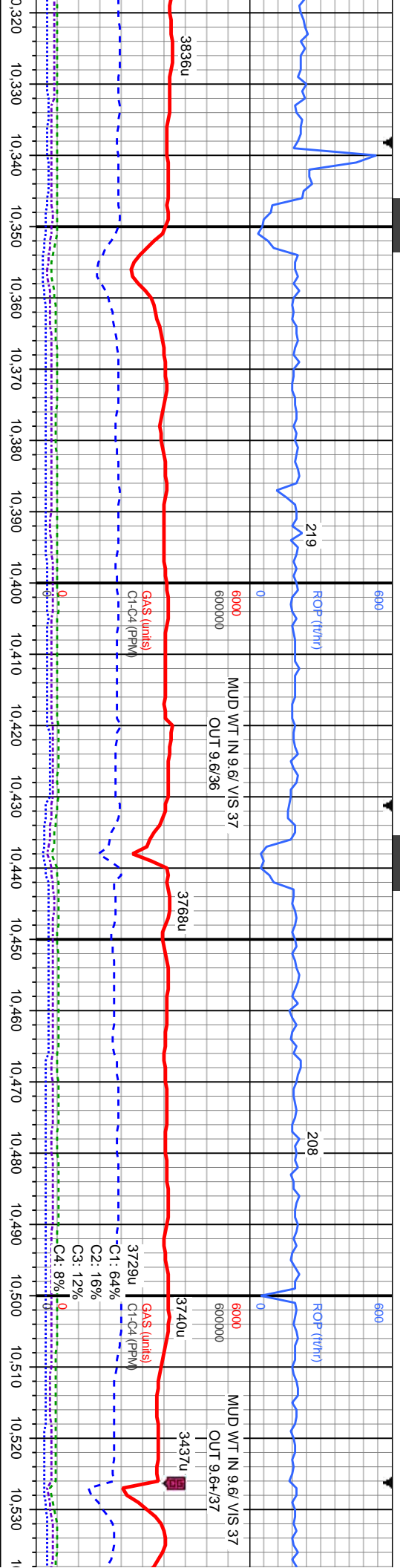




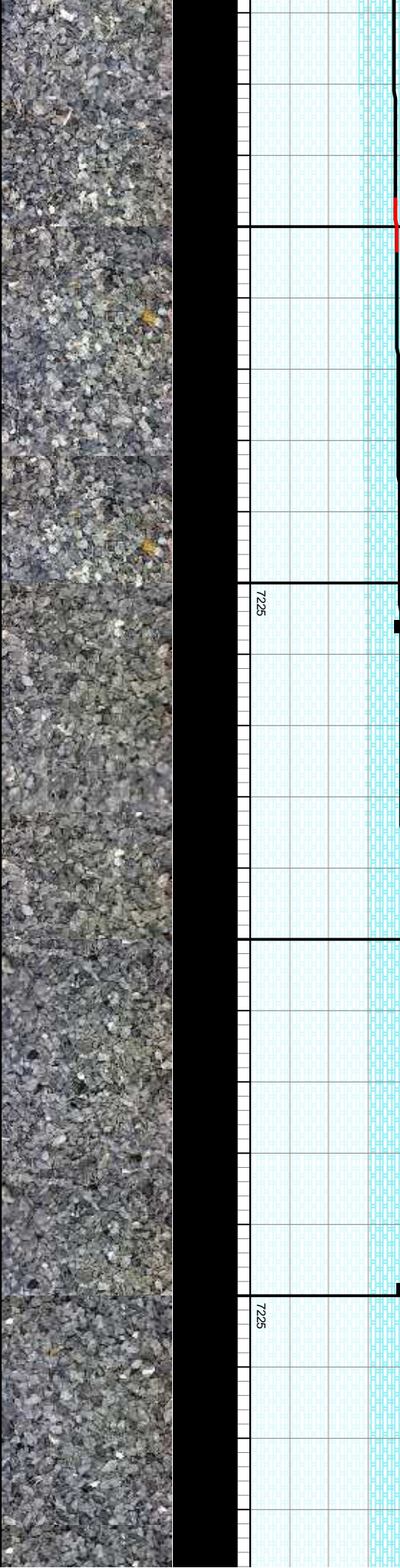
300	GAUSS (units)	95	300	GAUSS (units)	97	300	GAUSS (units)	104	300	GAUSS (units)	98
7125	CHK: It-med gy, str, sb ply-biky, brit, sl sft, sb rthy-sm tex, v calc, tr MRLST; mod-fast difse, fast sting, bri bishwh cut, even ring	7125	CHK: It-med gy, str, sb ply-biky, brit, sl sft, sb rthy-sm tex, v calc, tr MRLST; mod-fast difse, fast sting, bri bishwh cut, even ring	7125	CHK: It-med gy, str, sb ply-biky, brit, sl sft, sb rthy-sm tex, v calc, tr MRLST; mod-fast difse, fast sting, bri bishwh cut, even ring	7125	CHK: It-med gy, str, sb ply-biky, brit, sl sft, sb rthy-sm tex, v calc, tr MRLST; mod-fast difse, fast sting, bri bishwh cut, even ring	7125	CHK: It-med gy, str, sb ply-biky, brit, sl sft, sb rthy-sm tex, v calc, tr MRLST; mod-fast difse, fast sting, bri bishwh cut, even ring	7125	CHK: It-med gy, str, sb ply-biky, brit, sl sft, sb rthy-sm tex, v calc, tr MRLST; mod-fast difse, fast sting, bri bishwh cut, even ring
TVD (ft)	MD: 9.935'	TVD (ft)	MD: 10.029'	TVD (ft)	MD: 10.029'	TVD (ft)	MD: 10.029'	TVD (ft)	MD: 10.029'	TVD (ft)	MD: 10.029'
	Inclination: 90.86°		Inclination: 90°		Inclination: 90°		Inclination: 90°		Inclination: 90°		Inclination: 90°
	Azimuth: 269.21°		Azimuth: 270.26°		Azimuth: 270.26°		Azimuth: 270.26°		Azimuth: 270.26°		Azimuth: 270.26°
	VS: 3.002.17'		VS: 3.095.2'		VS: 3.095.2'		VS: 3.095.2'		VS: 3.095.2'		VS: 3.095.2'



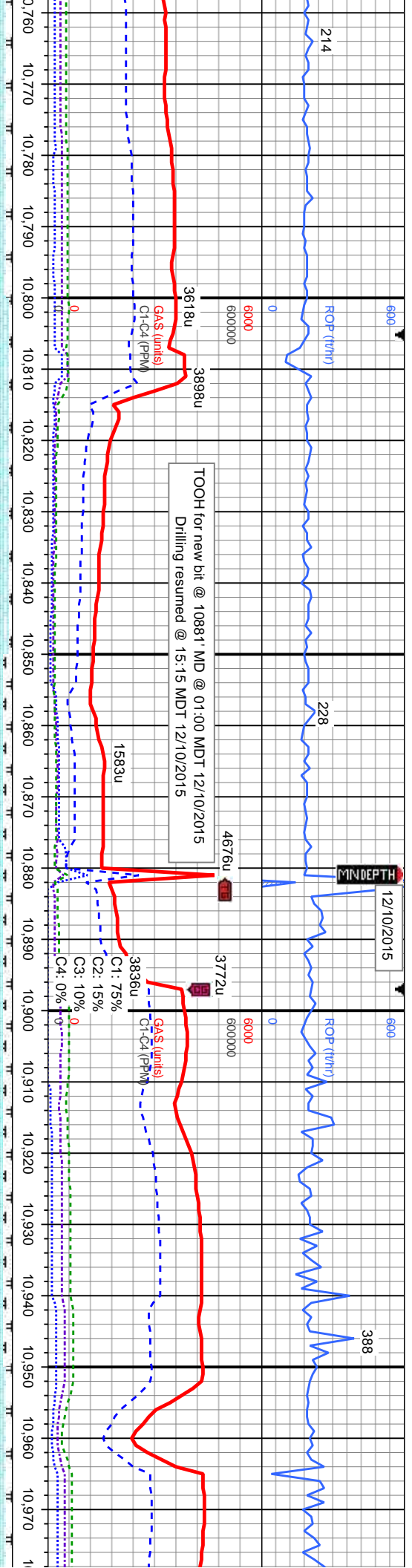




99	CHK: lt-med gy, str, sb ply-blky, brit, sl sft, sb rthy-sm tex, v calc, tr inoc, tr MRLST, mod-fast difse, fast sting, bri blshwh cut, even ring	91	CHK: lt-med gy, str, sb ply-blky, brit, sl sft, sb rthy-sm tex, v calc, tr inoc, tr MRLST, mod-fast difse, fast sting, bri blshwh cut, even ring	7125	CHK: lt-med gy, str, sb ply-blky, brit, sl sft, sb rthy-sm tex, v calc, tr inoc, tr MRLST, mod-fast difse, fast sting, bri blshwh cut, even ring	83	CHK: lt-med gy, str, sb ply-blky, brit, sl sft, sb rthy-sm tex, v calc, tr inoc, tr MRLST, mod-fast difse, fast sting, bri blshwh cut, even ring	7125	CHK: lt-med gy, str, sb ply-blky, brit, sl sft, sb rthy-sm tex, v calc, tr inoc, tr MRLST, mod-fast difse, fast sting, bri blshwh cut, even ring
MD: 10.406'		MD: 10.406'		MD: 10.406'		MD: 10.499'		MD: 10.499'	
TVD: 7,186.59'		TVD: 7,186.59'		TVD: 7,186.59'		TVD: 7,185.57'		TVD: 7,185.57'	
Inclination: 90.89°		Inclination: 90.89°		Inclination: 90.89°		Inclination: 90.37°		Inclination: 90.37°	
Azimuth: 272.53°		Azimuth: 272.53°		Azimuth: 272.53°		Azimuth: 271.12°		Azimuth: 271.12°	
VS: 3.465.36		VS: 3.465.36		VS: 3.465.36		VS: 3.556.85		VS: 3.556.85	





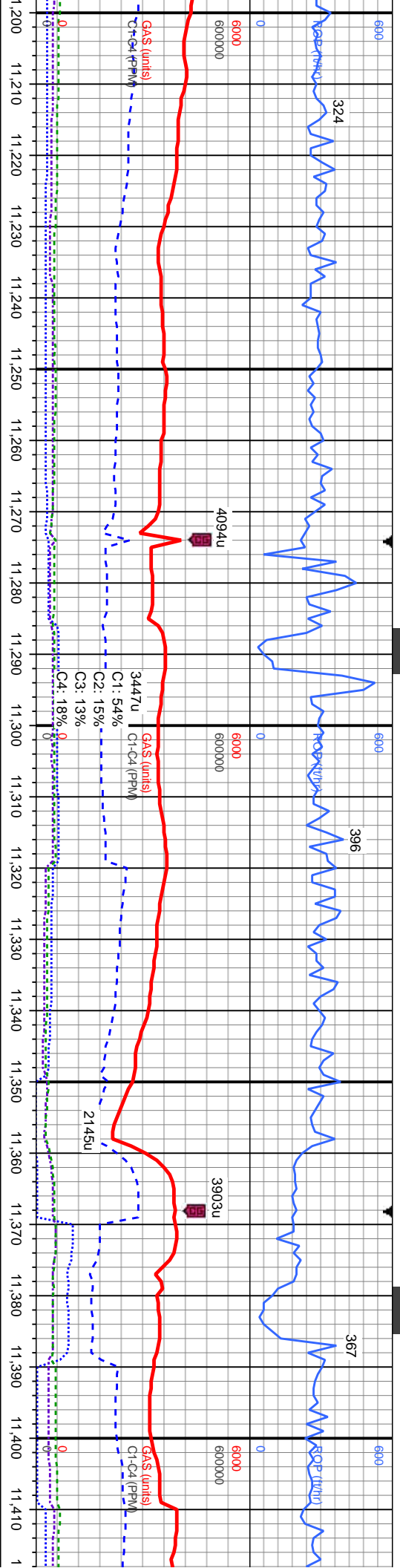


118	300	0	111	300	0	151	300	0	137	300	0
GAMMA (units)											
-med gy, str, sb ply-biky, brit, sl sft, sb rthy-sm tex, v calc, occ inoc, MRLST: med-dk gy, mot-spec, slt gr, sl frm, sb ply-ply, gt tex, dissm pyr, calc, mod-fast disse, fast sting, bri cut, even ring											
MD: 10,780'											
TVD: 7,186.66'											
Inclination: 89.17°											
Azimuth: 269.87°											
VS: 3,836.04'											
TVD (ft)											
MD: 10,872'											
TVD: 7,186.5'											
Inclination: 91.02°											
Azimuth: 270.61°											
VS: 3,925.97'											
TVD (ft)											
MD: 10,965'											
TVD: 7,185.47'											
Inclination: 90.25°											
Azimuth: 269.51°											
VS: 4,017.93'											
TVD (ft)											

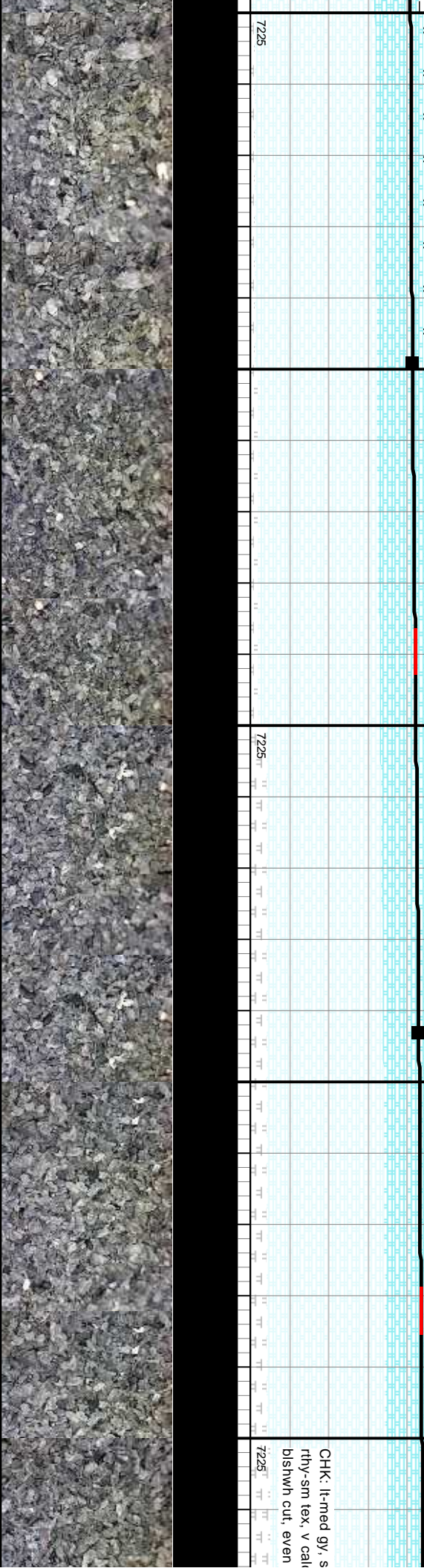
**Bit Data**  
Bit #: 3  
Type: AT506S  
Size: 8.75  
Depth In: 10,881'  
Depth Out: 12,000'  
Hours: 4.8 hrs  
Avg Ft/Hr: 233.13 /hr  
Jets: 3/16 3/16  
S/N: 7046024

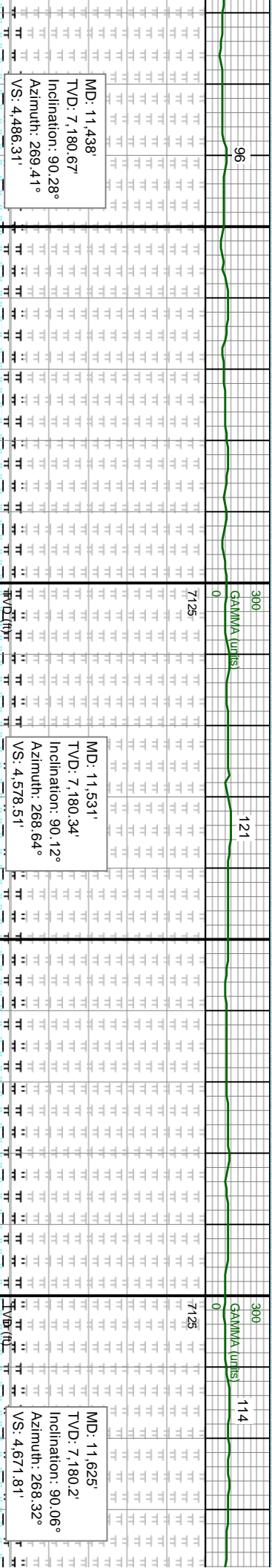
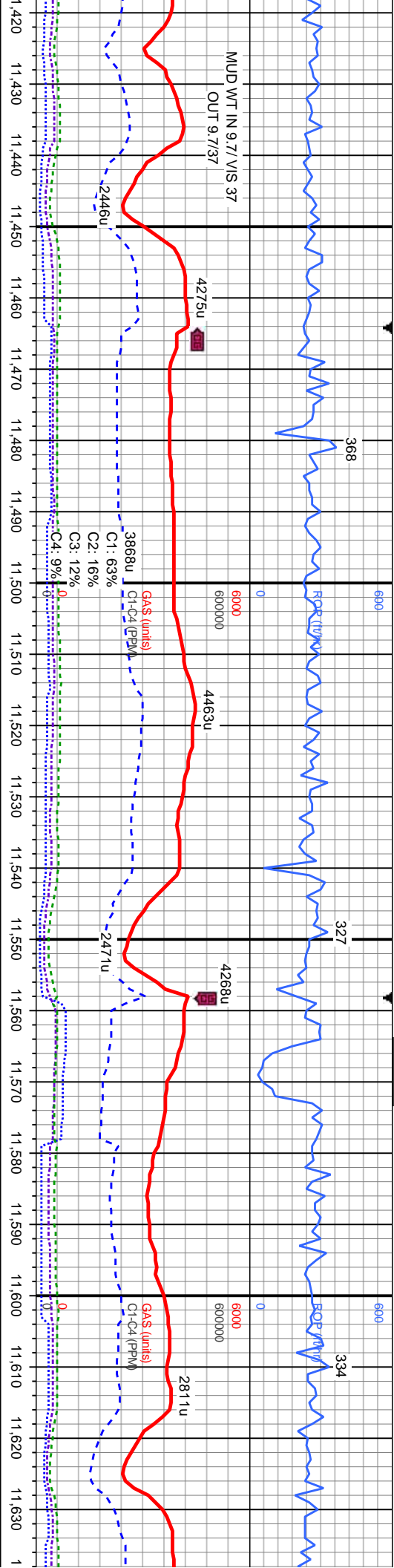






300	102	300	102	300	0
GAMMA (units)					
7125	TT	TT	TT	TT	TT
CHK: lt-med gy, str, sb pily-blky, brit, sl sft, sb rthy-sm tex, v calc; mod-fast difse, fast stmg, bri bishwh cut, even ring					
MD: 11,249' TVD: 7,183.63' Inclination: 90.74° Azimuth: 270.18° VS: 4,299.3					
7125	TT	TT	TT	TT	TT
CHK: lt-med gy, str, sb pily-blky, brit, sl sft, sb rthy-sm tex, v calc; mod-fast difse, fast stmg, bri bishwh cut, even ring					
MD: 11,343' TVD: 7,181.97' Inclination: 91.29° Azimuth: 269.82° VS: 4,392.26					
7125	TT	TT	TT	TT	TT
CHK: lt-med gy, str, sb pily-blky, brit, sl sft, sb rthy-sm tex, v calc; mod-fast difse, fast stmg, bri bishwh cut, even ring					
7125	TT	TT	TT	TT	TT
CHK: lt-med gy, str, sb pily-blky, brit, sl sft, sb rthy-sm tex, v cal					
7125	TT	TT	TT	TT	TT
bishwh cut, even					

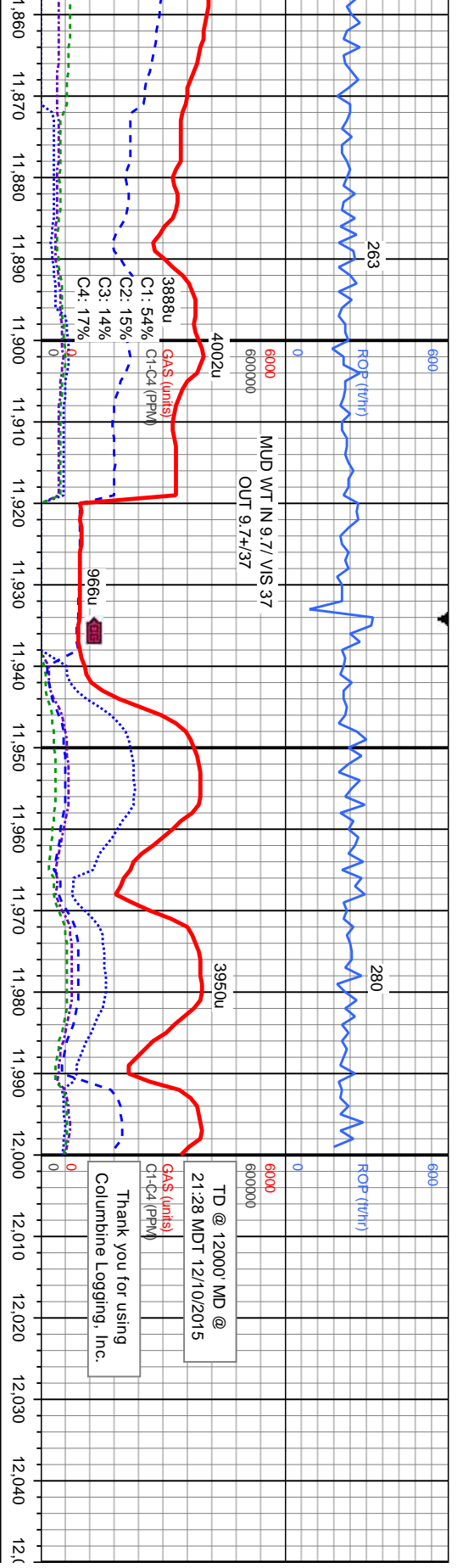




tr: sb pily-biky, brt, sl sft, sb rthy-sm tex, v calc: mod-fast difse, fast stmg, bri bishwh cut, even ring	CHK: It-med gy, str, sb pily-biky, brt, sl sft, sb rthy-sm tex, v calc: mod-fast difse, fast stmg, bri bishwh cut, even ring	CHK: It-med gy, str, sb pily-biky, brt, sl sft, sb rthy-sm tex, v calc: mod-fast difse, fast stmg, bri bishwh cut, even ring	CHK: It-med gy, str, sb pily-biky, brt, sl sft, sb rthy-sm tex, v calc: mod-fast difse, fast stmg, bri bishwh cut, even ring
ring	ring	ring	ring







MD: 11,907'  
TVD: 7,179.97'  
Inclination: 89.97°  
Azimuth: 269.86°  
VS: 4.951.1'

MD: 11,976'  
TVD: 7,179.92'  
Inclination: 90.12°  
Azimuth: 270.79°  
VS: 5.019.29'

MD: 12,000'  
TVD: 7,179.87'  
Inclination: 90.12°  
Azimuth: 270.79°  
VS: 5.042.98'

Projection to Bit

med gy, str, sb pily-biky, brit, sl sft, sb tex, abnt inoc, v calc; mod-fast difse, ing, bri blshwh cut, even ring	CHK: It-med gy, str, sb pily-biky, brit, sl sft, sb rthy-sm tex, abnt inoc, v calc; mod-fast difse, fast stimg, bri blshwh cut, even ring	7225
--	---	------

