

# Bayswater Exploration & Production, LLC

Well Name: **Hester Farms K-36HC**

Surface Location: Hester Farms Pad Sec.31-7N-66W

North American Datum 1983 , US State Plane 1983, Colorado Northern Zone

Ground Elevation: 4913.0

+N/-S +E/-W	North	East	Lat	Long	Slot
1	1	1	1	1	1
2	2	2	2	2	2
3	3	3	3	3	3
4	4	4	4	4	4
5	5	5	5	5	5
6	6	6	6	6	6
7	7	7	7	7	7
8	8	8	8	8	8
9	9	9	9	9	9
10	10	10	10	10	10
11	11	11	11	11	11
12	12	12	12	12	12
13	13	13	13	13	13
14	14	14	14	14	14
15	15	15	15	15	15
16	16	16	16	16	16
17	17	17	17	17	17
18	18	18	18	18	18
19	19	19	19	19	19
20	20	20	20	20	20
21	21	21	21	21	21
22	22	22	22	22	22
23	23	23	23	23	23
24	24	24	24	24	24
25	25	25	25	25	25
26	26	26	26	26	26
27	27	27	27	27	27
28	28	28	28	28	28
29	29	29	29	29	29
30	30	30	30	30	30
31	31	31	31	31	31
32	32	32	32	32	32
33	33	33	33	33	33
34	34	34	34	34	34
35	35	35	35	35	35
36	36	36	36	36	36
37	37	37	37	37	37
38	38	38	38	38	38
39	39	39	39	39	39
40	40	40	40	40	40
41	41	41	41	41	41
42	42	42	42	42	42
43	43	43	43	43	43
44	44	44	44	44	44
45	45	45	45	45	45
46	46	46	46	46	46
47	47	47	47	47	47
48	48	48	48	48	48
49	49	49	49	49	49
50	50	50	50	50	50
51	51	51	51	51	51
52	52	52	52	52	52
53	53	53	53	53	53
54	54	54	54	54	54
55	55	55	55	55	55
56	56	56	56	56	56
57	57	57	57	57	57
58	58	58	58	58	58
59	59	59	59	59	59
60	60	60	60	60	60
61	61	61	61	61	61
62	62	62	62	62	62
63	63	63	63	63	63
64	64	64	64	64	64
65	65	65	65	65	65
66	66	66	66	66	66
67	67	67	67	67	67
68	68	68	68	68	68
69	69	69	69	69	69
70	70	70	70	70	70
71	71	71	71	71	71
72	72	72	72	72	72
73	73	73	73	73	73
74	74	74	74	74	74
75					

0.0 0.01437789.423185849.37 40.533209 -104.831382

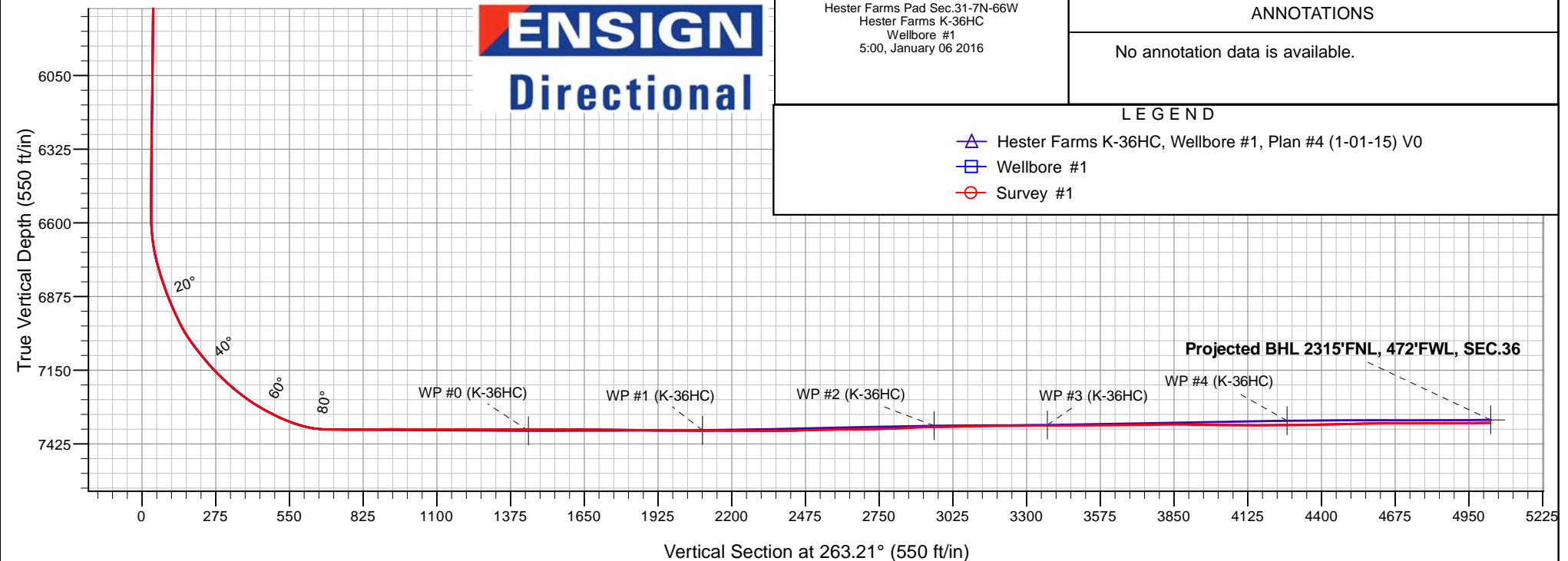
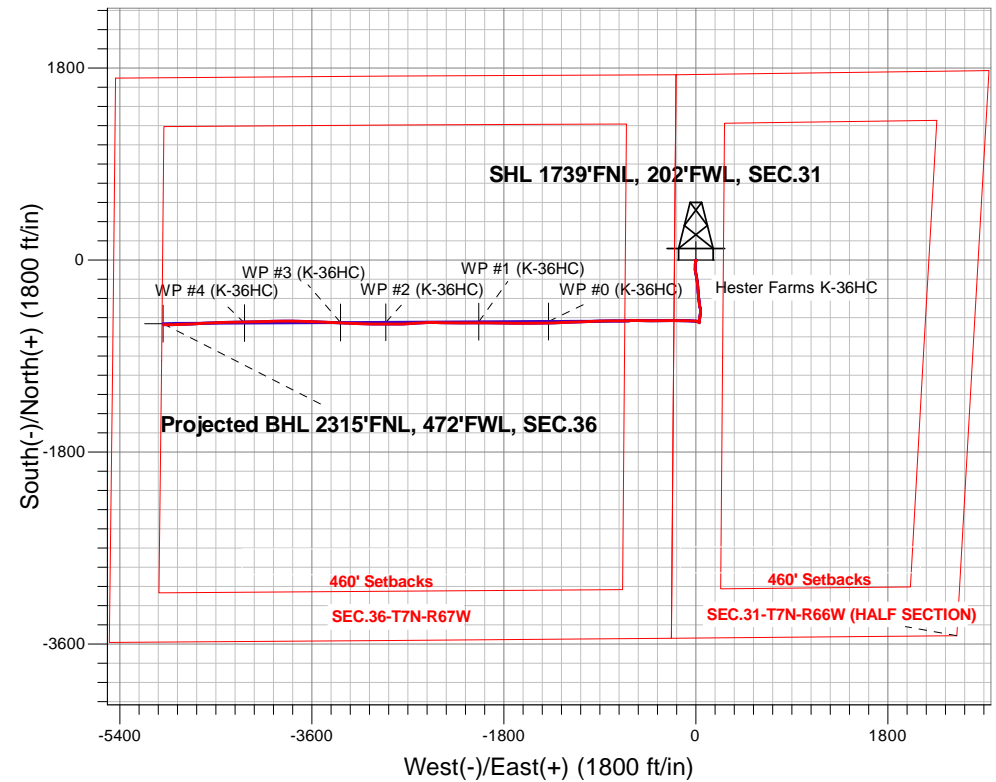
RKB - 22.5' WELL @ 4935.5ft (RKB - 22.5')

# FINAL SURVEY

## Projected Bottom Hole Location

**12113'MD 7347'TVD 605'S & 4994'W of SHL**

**90.57 degree Incl @ 269.17 degree AZM**





## **Bayswater Exploration & Production, LLC**

**SEC.31-T7N-R66W**

**Hester Farms Pad Sec.31-7N-66W**

**Hester Farms K-36HC**

**Wellbore #1**

**Survey: Survey #1**

## **Standard Survey Report**

**06 January, 2016**



**BAYSWATER**  
**EXPLORATION & PRODUCTION, LLC**

<b>Company:</b>	Bayswater Exploration & Production, LLC	<b>Local Co-ordinate Reference:</b>	Well Hester Farms K-36HC
<b>Project:</b>	SEC.31-T7N-R66W	<b>TVD Reference:</b>	WELL @ 4935.5ft (RKB - 22.5')
<b>Site:</b>	Hester Farms Pad Sec.31-7N-66W	<b>MD Reference:</b>	WELL @ 4935.5ft (RKB - 22.5')
<b>Well:</b>	Hester Farms K-36HC	<b>North Reference:</b>	True
<b>Wellbore:</b>	Wellbore #1	<b>Survey Calculation Method:</b>	Minimum Curvature
<b>Design:</b>	Wellbore #1	<b>Database:</b>	US_EDM

<b>Project</b>	SEC.31-T7N-R66W, Weld County, Colorado		
<b>Map System:</b>	US State Plane 1983	<b>System Datum:</b>	Mean Sea Level
<b>Geo Datum:</b>	North American Datum 1983		Using Well Reference Point
<b>Map Zone:</b>	Colorado Northern Zone		Using geodetic scale factor

Site		Hester Farms Pad Sec.31-7N-66W			
Site Position:		Northing:	1,437,939.53 usft	Latitude:	40.533621
From:	Lat/Long	Easting:	3,185,849.35 usft	Longitude:	-104.831378
Position Uncertainty:	0.0 ft	Slot Radius:	13-3/16 "	Grid Convergence:	0.43 °

Well	Hester Farms K-36HC					
Well Position	+N/-S	0.0 ft	Northing:	1,437,789.42 usft	Latitude:	40.533209
	+E/-W	0.0 ft	Easting:	3,185,849.37 usft	Longitude:	-104.831382
Position Uncertainty		0.0 ft	Wellhead Elevation:	ft	Ground Level:	4,913.0 ft

<b>Wellbore</b>	Wellbore #1				
<b>Magnetics</b>	<b>Model Name</b>	<b>Sample Date</b>	<b>Declination (°)</b>	<b>Dip Angle (°)</b>	<b>Field Strength (nT)</b>
	IGRF2010	1/1/2016	8.30	66.99	52,714

<b>Design</b>	Wellbore #1				
<b>Audit Notes:</b>					
<b>Version:</b>	1.0	<b>Phase:</b>	ACTUAL	<b>Tie On Depth:</b>	0.0
<b>Vertical Section:</b>	<b>Depth From (TVD) (ft)</b>	<b>+N/-S (ft)</b>	<b>+E/-W (ft)</b>	<b>Direction (°)</b>	
	0.0	0.0	0.0	263.21	

<b>Survey Program</b>	<b>Date</b>	1/6/2016			
<b>From (ft)</b>	<b>To (ft)</b>	<b>Survey (Wellbore)</b>	<b>Tool Name</b>	<b>Description</b>	
23.0	12,113.0	Survey #1 (Wellbore #1)	MWD	MWD - Standard	

<b>Survey</b>										
<b>Measured Depth (ft)</b>	<b>Inclination (°)</b>	<b>Azimuth (°)</b>	<b>Vertical Depth (ft)</b>	<b>+N/-S (ft)</b>	<b>+E/-W (ft)</b>	<b>Vertical Section (ft)</b>	<b>Dogleg Rate (°/100usft)</b>	<b>Build Rate (°/100usft)</b>	<b>Turn Rate (°/100usft)</b>	
0.0	0.00	0.00	0.0	0.0	0.0	0.0	0.00	0.00	0.00	
1.0	0.00	0.00	1.0	0.0	0.0	0.0	0.00	0.00	0.00	
<b>SHL 1739'FNL, 202'FWL, SEC.31</b>										
23.0	0.00	162.18	23.0	0.0	0.0	0.0	0.00	0.00	0.00	
123.0	0.76	162.18	123.0	-0.6	0.2	-0.1	0.76	0.76	0.00	
217.0	0.22	93.55	217.0	-1.2	0.6	-0.4	0.76	-0.57	-73.01	
311.0	0.22	104.97	311.0	-1.3	0.9	-0.8	0.05	0.00	12.15	
403.0	0.29	94.95	403.0	-1.4	1.3	-1.2	0.09	0.08	-10.89	
497.0	0.91	130.41	497.0	-1.9	2.1	-1.9	0.74	0.66	37.72	
591.0	0.33	252.00	591.0	-2.4	2.4	-2.1	1.19	-0.62	129.35	
685.0	0.23	315.05	685.0	-2.4	2.1	-1.8	0.32	-0.11	67.07	

<b>Company:</b>	Bayswater Exploration & Production, LLC	<b>Local Co-ordinate Reference:</b>	Well Hester Farms K-36HC
<b>Project:</b>	SEC.31-T7N-R66W	<b>TVD Reference:</b>	WELL @ 4935.5ft (RKB - 22.5')
<b>Site:</b>	Hester Farms Pad Sec.31-7N-66W	<b>MD Reference:</b>	WELL @ 4935.5ft (RKB - 22.5')
<b>Well:</b>	Hester Farms K-36HC	<b>North Reference:</b>	True
<b>Wellbore:</b>	Wellbore #1	<b>Survey Calculation Method:</b>	Minimum Curvature
<b>Design:</b>	Wellbore #1	<b>Database:</b>	US_EDM

Survey									
Measured Depth (ft)	Inclination (°)	Azimuth (°)	Vertical Depth (ft)	+N/-S (ft)	+E/-W (ft)	Vertical Section (ft)	Dogleg Rate (°/100usft)	Build Rate (°/100usft)	Turn Rate (°/100usft)
780.0	0.41	321.15	780.0	-2.0	1.7	-1.5	0.19	0.19	6.42
873.0	0.41	289.30	873.0	-1.6	1.2	-1.0	0.24	0.00	-34.25
967.0	0.61	296.55	967.0	-1.3	0.4	-0.3	0.22	0.21	7.71
1,061.0	0.50	323.23	1,061.0	-0.7	-0.3	0.4	0.30	-0.12	28.38
1,156.0	0.89	206.05	1,156.0	-1.1	-0.8	1.0	1.27	0.41	-123.35
1,249.0	2.61	196.91	1,248.9	-3.7	-1.8	2.2	1.87	1.85	-9.83
1,342.0	4.96	187.32	1,341.7	-9.7	-2.9	4.0	2.61	2.53	-10.31
1,437.0	7.65	187.95	1,436.1	-20.1	-4.3	6.6	2.83	2.83	0.66
1,505.0	8.02	186.37	1,503.5	-29.3	-5.5	8.9	0.63	0.54	-2.32
1,591.0	7.60	187.60	1,588.7	-40.9	-6.9	11.7	0.53	-0.49	1.43
1,687.0	9.30	181.30	1,683.7	-54.9	-7.9	14.3	2.01	1.77	-6.56
1,782.0	10.50	177.80	1,777.2	-71.3	-7.7	16.1	1.41	1.26	-3.68
1,877.0	9.80	177.10	1,870.7	-88.0	-7.0	17.3	0.75	-0.74	-0.74
1,973.0	10.50	170.80	1,965.2	-104.8	-5.2	17.5	1.37	0.73	-6.56
2,068.0	10.10	170.40	2,058.7	-121.5	-2.4	16.8	0.43	-0.42	-0.42
2,163.0	9.80	167.90	2,152.3	-137.7	0.7	15.6	0.55	-0.32	-2.63
2,258.0	9.40	169.40	2,246.0	-153.2	3.8	14.3	0.50	-0.42	1.58
2,353.0	9.10	169.40	2,339.7	-168.2	6.6	13.3	0.32	-0.32	0.00
2,448.0	8.90	169.00	2,433.6	-182.8	9.4	12.3	0.22	-0.21	-0.42
2,543.0	8.10	174.10	2,527.5	-196.7	11.5	11.8	1.16	-0.84	5.37
2,639.0	7.70	177.80	2,622.6	-209.8	12.4	12.5	0.67	-0.42	3.85
2,734.0	8.00	172.70	2,716.7	-222.7	13.5	12.9	0.80	0.32	-5.37
2,829.0	9.80	174.10	2,810.6	-237.3	15.2	13.0	1.91	1.89	1.47
2,924.0	8.70	171.60	2,904.3	-252.5	17.1	12.9	1.23	-1.16	-2.63
3,019.0	8.90	177.60	2,998.2	-266.9	18.4	13.3	0.99	0.21	6.32
3,114.0	8.70	177.30	3,092.1	-281.5	19.1	14.3	0.22	-0.21	-0.32
3,209.0	9.00	176.90	3,186.0	-296.0	19.8	15.3	0.32	0.32	-0.42
3,305.0	8.30	173.40	3,280.9	-310.4	21.0	15.8	0.91	-0.73	-3.65
3,399.0	8.40	176.20	3,373.9	-324.0	22.2	16.2	0.45	0.11	2.98
3,494.0	7.40	173.60	3,468.0	-337.0	23.4	16.6	1.12	-1.05	-2.74
3,589.0	7.20	172.20	3,562.2	-349.0	24.9	16.6	0.28	-0.21	-1.47
3,684.0	6.70	172.00	3,656.5	-360.4	26.5	16.3	0.53	-0.53	-0.21
3,779.0	7.10	178.30	3,750.8	-371.7	27.4	16.7	0.90	0.42	6.63
3,874.0	8.00	169.00	3,845.0	-384.1	28.8	16.8	1.59	0.95	-9.79
3,970.0	8.90	172.70	3,940.0	-398.0	31.1	16.2	1.09	0.94	3.85
4,065.0	9.10	176.60	4,033.8	-412.8	32.4	16.6	0.68	0.21	4.11
4,160.0	9.40	171.10	4,127.5	-428.0	34.1	16.8	0.98	0.32	-5.79
4,255.0	8.40	165.50	4,221.4	-442.4	37.0	15.5	1.39	-1.05	-5.89
4,350.0	8.40	163.20	4,315.4	-455.7	40.8	13.4	0.35	0.00	-2.42
4,446.0	8.40	172.90	4,410.4	-469.4	43.7	12.1	1.47	0.00	10.10
4,541.0	8.40	186.40	4,504.4	-483.2	43.7	13.7	2.07	0.00	14.21
4,636.0	9.50	187.50	4,598.2	-497.8	41.9	17.2	1.17	1.16	1.16
4,731.0	8.70	188.30	4,692.0	-512.7	39.9	21.0	0.85	-0.84	0.84

<b>Company:</b>	Bayswater Exploration & Production, LLC	<b>Local Co-ordinate Reference:</b>	Well Hester Farms K-36HC
<b>Project:</b>	SEC.31-T7N-R66W	<b>TVD Reference:</b>	WELL @ 4935.5ft (RKB - 22.5')
<b>Site:</b>	Hester Farms Pad Sec.31-7N-66W	<b>MD Reference:</b>	WELL @ 4935.5ft (RKB - 22.5')
<b>Well:</b>	Hester Farms K-36HC	<b>North Reference:</b>	True
<b>Wellbore:</b>	Wellbore #1	<b>Survey Calculation Method:</b>	Minimum Curvature
<b>Design:</b>	Wellbore #1	<b>Database:</b>	US_EDM

Survey									
Measured Depth (ft)	Inclination (°)	Azimuth (°)	Vertical Depth (ft)	+N/-S (ft)	+E/-W (ft)	Vertical Section (ft)	Dogleg Rate (°/100usft)	Build Rate (°/100usft)	Turn Rate (°/100usft)
4,826.0	7.60	186.80	4,786.0	-526.1	38.1	24.4	1.18	-1.16	-1.58
4,921.0	7.30	189.70	4,880.2	-538.3	36.3	27.6	0.51	-0.32	3.05
5,016.0	6.20	196.80	4,974.6	-549.1	33.8	31.3	1.45	-1.16	7.47
5,111.0	5.30	189.40	5,069.1	-558.4	31.6	34.6	1.23	-0.95	-7.79
5,207.0	4.00	181.80	5,164.8	-566.1	30.8	36.3	1.50	-1.35	-7.92
5,302.0	3.70	192.00	5,259.6	-572.4	30.1	37.8	0.79	-0.32	10.74
5,397.0	3.30	193.30	5,354.4	-578.1	28.8	39.7	0.43	-0.42	1.37
5,493.0	1.50	174.10	5,450.3	-582.0	28.3	40.7	2.03	-1.88	-20.00
5,586.0	1.20	248.10	5,543.3	-583.6	27.5	41.7	1.77	-0.32	79.57
5,680.0	0.80	157.60	5,637.3	-584.5	26.9	42.4	1.54	-0.43	-96.28
5,772.0	1.20	145.80	5,729.3	-585.9	27.6	41.8	0.49	0.43	-12.83
5,866.0	0.50	61.40	5,823.3	-586.6	28.6	41.0	1.33	-0.74	-89.79
5,961.0	0.40	20.10	5,918.3	-586.0	29.0	40.5	0.35	-0.11	-43.47
6,055.0	1.10	43.50	6,012.2	-585.1	29.8	39.6	0.80	0.74	24.89
6,148.0	1.00	36.80	6,105.2	-583.8	30.9	38.4	0.17	-0.11	-7.20
6,242.0	1.10	41.00	6,199.2	-582.4	31.9	37.1	0.13	0.11	4.47
6,336.0	0.70	59.30	6,293.2	-581.5	33.0	35.9	0.52	-0.43	19.47
6,431.0	0.60	48.10	6,388.2	-580.8	33.9	35.0	0.17	-0.11	-11.79
6,525.0	0.00	347.80	6,482.2	-580.5	34.3	34.6	0.64	-0.64	0.00
6,618.0	0.20	143.20	6,575.2	-580.6	34.4	34.5	0.22	0.22	0.00
6,711.0	7.70	283.10	6,667.9	-579.4	28.4	40.3	8.45	8.06	150.43
6,803.0	16.40	285.50	6,757.8	-574.5	9.8	58.2	9.47	9.46	2.61
6,850.0	18.60	281.30	6,802.6	-571.2	-3.9	71.4	5.39	4.68	-8.94
6,898.0	20.00	271.70	6,847.9	-569.5	-19.6	86.8	7.22	2.92	-20.00
6,945.0	23.10	271.10	6,891.6	-569.1	-36.9	103.9	6.61	6.60	-1.28
6,992.0	24.00	271.50	6,934.7	-568.7	-55.7	122.5	1.94	1.91	0.85
7,039.0	26.60	272.20	6,977.2	-568.0	-75.7	142.4	5.57	5.53	1.49
7,087.0	33.20	271.30	7,018.8	-567.3	-99.6	166.0	13.78	13.75	-1.88
7,134.0	37.00	270.80	7,057.3	-566.8	-126.7	192.8	8.11	8.09	-1.06
7,181.0	38.90	269.20	7,094.3	-566.8	-155.6	221.5	4.55	4.04	-3.40
7,228.0	41.50	269.20	7,130.2	-567.2	-185.9	251.6	5.53	5.53	0.00
7,274.0	45.10	269.20	7,163.7	-567.7	-217.4	283.0	7.83	7.83	0.00
7,321.0	47.60	269.40	7,196.1	-568.1	-251.4	316.8	5.33	5.32	0.43
7,369.0	50.80	270.10	7,227.5	-568.2	-287.8	352.9	6.76	6.67	1.46
7,463.0	58.80	271.50	7,281.6	-567.1	-364.5	429.0	8.60	8.51	1.49
7,557.0	65.10	269.70	7,325.8	-566.3	-447.4	511.2	6.91	6.70	-1.91
7,652.0	74.80	270.30	7,358.3	-566.3	-536.5	599.7	10.23	10.21	0.63
7,747.0	89.40	267.80	7,371.4	-567.9	-630.4	693.1	15.59	15.37	-2.63
7,793.6	89.82	268.71	7,371.7	-569.3	-676.9	739.4	2.16	0.91	1.96
LPL 2305°FNL, 470°FEL, SEC.36									
7,886.0	90.66	270.53	7,371.3	-569.9	-769.3	831.3	2.16	0.91	1.96
7,980.0	90.31	269.51	7,370.5	-569.9	-863.3	924.6	1.15	-0.37	-1.09
8,073.0	89.25	266.76	7,370.9	-572.9	-956.3	1,017.3	3.17	-1.14	-2.96

<b>Company:</b>	Bayswater Exploration & Production, LLC	<b>Local Co-ordinate Reference:</b>	Well Hester Farms K-36HC
<b>Project:</b>	SEC.31-T7N-R66W	<b>TVD Reference:</b>	WELL @ 4935.5ft (RKB - 22.5')
<b>Site:</b>	Hester Farms Pad Sec.31-7N-66W	<b>MD Reference:</b>	WELL @ 4935.5ft (RKB - 22.5')
<b>Well:</b>	Hester Farms K-36HC	<b>North Reference:</b>	True
<b>Wellbore:</b>	Wellbore #1	<b>Survey Calculation Method:</b>	Minimum Curvature
<b>Design:</b>	Wellbore #1	<b>Database:</b>	US_EDM

Survey									
Measured Depth (ft)	Inclination (°)	Azimuth (°)	Vertical Depth (ft)	+N/-S (ft)	+E/-W (ft)	Vertical Section (ft)	Dogleg Rate (°/100usft)	Build Rate (°/100usft)	Turn Rate (°/100usft)
8,169.0	90.66	267.51	7,370.9	-577.7	-1,052.1	1,113.1	1.66	1.47	0.78
8,262.0	89.78	267.72	7,370.6	-581.6	-1,145.1	1,205.8	0.97	-0.95	0.23
8,356.0	89.25	268.10	7,371.4	-585.0	-1,239.0	1,299.5	0.69	-0.56	0.40
8,451.0	90.40	268.49	7,371.7	-587.8	-1,333.9	1,394.1	1.28	1.21	0.41
8,500.1	90.17	268.80	7,371.4	-589.0	-1,383.0	1,442.9	0.78	-0.47	0.63
WP #0 (K-36HC)									
8,545.0	89.96	269.08	7,371.4	-589.8	-1,427.9	1,487.6	0.78	-0.47	0.63
8,639.0	90.13	269.34	7,371.3	-591.1	-1,521.9	1,581.1	0.33	0.18	0.28
8,734.0	89.52	269.97	7,371.6	-591.7	-1,616.9	1,675.5	0.92	-0.64	0.66
8,829.0	89.25	270.35	7,372.6	-591.4	-1,711.9	1,769.8	0.49	-0.28	0.40
8,922.0	89.25	271.70	7,373.8	-589.7	-1,804.9	1,861.9	1.45	0.00	1.45
9,016.0	89.34	270.35	7,375.0	-588.1	-1,898.9	1,955.1	1.44	0.10	-1.44
9,111.0	90.13	269.90	7,375.4	-587.9	-1,993.9	2,049.4	0.96	0.83	-0.47
9,153.9	89.89	269.99	7,375.4	-587.9	-2,036.8	2,092.0	0.60	-0.56	0.21
WP #1 (K-36HC)									
9,205.0	89.60	270.10	7,375.6	-587.9	-2,087.9	2,142.7	0.60	-0.56	0.21
9,300.0	89.96	269.55	7,376.0	-588.1	-2,182.9	2,237.1	0.69	0.38	-0.58
9,394.0	89.96	270.51	7,376.1	-588.1	-2,276.9	2,330.4	1.02	0.00	1.02
9,489.0	91.01	270.99	7,375.3	-586.9	-2,371.8	2,424.6	1.22	1.11	0.51
9,584.0	91.98	271.18	7,372.8	-585.1	-2,466.8	2,518.7	1.04	1.02	0.20
9,678.0	89.96	266.47	7,371.2	-587.0	-2,560.7	2,612.2	5.45	-2.15	-5.01
9,773.0	90.84	265.81	7,370.5	-593.4	-2,655.5	2,707.0	1.16	0.93	-0.69
9,867.0	92.77	267.90	7,367.6	-598.5	-2,749.3	2,800.8	3.03	2.05	2.22
9,961.0	92.24	270.44	7,363.5	-599.9	-2,843.2	2,894.2	2.76	-0.56	2.70
10,024.8	91.09	270.21	7,361.6	-599.5	-2,907.0	2,957.5	1.83	-1.80	-0.35
WP #2 (K-36HC)									
10,054.0	90.57	270.11	7,361.2	-599.4	-2,936.2	2,986.4	1.83	-1.80	-0.35
10,148.0	91.19	270.51	7,359.7	-598.9	-3,030.2	3,079.7	0.78	0.66	0.43
10,244.0	90.92	272.05	7,358.0	-596.8	-3,126.1	3,174.7	1.63	-0.28	1.60
10,338.0	89.69	272.29	7,357.5	-593.2	-3,220.0	3,267.6	1.33	-1.31	0.26
10,431.0	91.36	272.86	7,356.6	-589.1	-3,312.9	3,359.3	1.90	1.80	0.61
10,450.0	91.04	272.74	7,356.2	-588.1	-3,331.9	3,378.1	1.80	-1.68	-0.65
WP #3 (K-36HC)									
10,525.0	89.78	272.25	7,355.7	-584.9	-3,406.8	3,452.1	1.80	-1.68	-0.65
10,619.0	90.48	272.45	7,355.5	-581.0	-3,500.8	3,544.9	0.77	0.74	0.21
10,711.0	90.92	272.01	7,354.3	-577.4	-3,592.7	3,635.7	0.68	0.48	-0.48
10,806.0	90.22	271.28	7,353.4	-574.7	-3,687.6	3,729.7	1.06	-0.74	-0.77
10,898.0	91.01	271.39	7,352.4	-572.6	-3,779.6	3,820.8	0.87	0.86	0.12
10,991.0	88.64	269.08	7,352.7	-572.2	-3,872.6	3,913.1	3.56	-2.55	-2.48
11,085.0	89.16	268.17	7,354.5	-574.4	-3,966.5	4,006.6	1.11	0.55	-0.97
11,180.0	89.69	269.14	7,355.4	-576.7	-4,061.5	4,101.2	1.16	0.56	1.02
11,275.0	90.48	269.16	7,355.3	-578.1	-4,156.5	4,195.7	0.83	0.83	0.02
11,350.6	90.55	268.81	7,354.6	-579.4	-4,232.1	4,270.9	0.47	0.10	-0.46
WP #4 (K-36HC)									
11,369.0	90.57	268.73	7,354.4	-579.8	-4,250.5	4,289.2	0.47	0.10	-0.46

<b>Company:</b>	Bayswater Exploration & Production, LLC	<b>Local Co-ordinate Reference:</b>	Well Hester Farms K-36HC
<b>Project:</b>	SEC.31-T7N-R66W	<b>TVD Reference:</b>	WELL @ 4935.5ft (RKB - 22.5')
<b>Site:</b>	Hester Farms Pad Sec.31-7N-66W	<b>MD Reference:</b>	WELL @ 4935.5ft (RKB - 22.5')
<b>Well:</b>	Hester Farms K-36HC	<b>North Reference:</b>	True
<b>Wellbore:</b>	Wellbore #1	<b>Survey Calculation Method:</b>	Minimum Curvature
<b>Design:</b>	Wellbore #1	<b>Database:</b>	US_EDM

Survey									
Measured Depth (ft)	Inclination (°)	Azimuth (°)	Vertical Depth (ft)	+N/-S (ft)	+E/-W (ft)	Vertical Section (ft)	Dogleg Rate (°/100usft)	Build Rate (°/100usft)	Turn Rate (°/100usft)
11,463.0	90.75	268.79	7,353.4	-581.8	-4,344.5	4,382.8	0.20	0.19	0.06
11,557.0	91.45	268.21	7,351.6	-584.3	-4,438.4	4,476.4	0.97	0.74	-0.62
11,651.0	91.45	267.39	7,349.2	-587.9	-4,532.3	4,570.0	0.87	0.00	-0.87
11,746.0	90.22	266.67	7,347.8	-592.8	-4,627.2	4,664.8	1.50	-1.29	-0.76
11,840.0	89.69	266.77	7,347.9	-598.2	-4,721.0	4,758.6	0.57	-0.56	0.11
11,933.0	90.13	268.52	7,348.0	-602.0	-4,813.9	4,851.3	1.94	0.47	1.88
12,031.0	90.57	269.17	7,347.4	-604.0	-4,911.9	4,948.9	0.80	0.45	0.66
12,113.0	90.57	269.17	7,346.6	-605.2	-4,993.9	5,030.4	0.00	0.00	0.00
BHL 2305'FNL, 470'FWL, SEC.36									

Design Targets									
Target Name - hit/miss target - Shape	Dip Angle (°)	Dip Dir. (°)	TVD (ft)	+N/-S (ft)	+E/-W (ft)	Northing (usft)	Easting (usft)	Latitude	Longitude
SHL 1739'FNL, 202'FWL - survey hits target center - Point	0.00	0.00	1.0	0.0	0.0	1,437,789.43	3,185,849.37	40.533209	-104.831382
BHL 2305'FNL, 470'FWL - survey misses target center by 15.0ft at 12113.0ft MD (7346.6 TVD, -605.2 N, -4993.9 E) - Point	0.00	0.00	7,336.0	-594.8	-4,995.8	1,437,157.01	3,180,858.32	40.531575	-104.849354
WP #4 (K-36HC) - survey misses target center by 19.6ft at 11350.6ft MD (7354.6 TVD, -579.4 N, -4232.1 E) - Point	0.00	0.00	7,338.5	-590.5	-4,231.7	1,437,167.05	3,181,622.38	40.531587	-104.846605
WP #3 (K-36HC) - survey misses target center by 3.2ft at 10450.0ft MD (7356.2 TVD, -588.1 N, -3331.9 E) - Point	0.00	0.00	7,354.5	-585.4	-3,331.8	1,437,178.94	3,182,522.19	40.531602	-104.843368
WP #2 (K-36HC) - survey misses target center by 17.1ft at 10024.8ft MD (7361.6 TVD, -599.5 N, -2907.0 E) - Point	0.00	0.00	7,357.5	-582.9	-2,906.8	1,437,184.64	3,182,947.14	40.531609	-104.841839
WP #1 (K-36HC) - survey misses target center by 10.0ft at 9153.9ft MD (7375.4 TVD, -587.9 N, -2036.8 E) - Point	0.00	0.00	7,374.5	-577.9	-2,036.8	1,437,196.20	3,183,817.05	40.531623	-104.838709
WP #0 (K-36HC) - survey misses target center by 14.3ft at 8500.1ft MD (7371.4 TVD, -589.0 N, -1383.0 E) - Point	0.00	0.00	7,376.0	-575.4	-1,383.3	1,437,203.63	3,184,470.49	40.531630	-104.836359

Checked By: _____	Approved By: _____	Date: _____
-------------------	--------------------	-------------