



Scale: 5" / 100'
Measured Depth Log

Well Name Hester Farms J-36HN

Location SEC 31 T7N R66W

State Colorado

Country United States

API Number 05-123-42003

Geographic Region DJ Basin

Spud Date 12/2/2015

Surface Coordinates Lat/Long: 40.533250/-104.831382

SEC 31 T7N R66W
1724' FNL 202' FWL

County Weld

Rig Number Frontier (Utah) 8

AFE # 42003

Field Wattenberg

Drilling Completed 1/16/2016

Bottom Hole Coordinates SEC 36 T7N R67W
2140' FNL 470' FWL

Ground Elevation 4913'

K.B. Elevation 4936'

Logged Interval 6000' To 11906'

Total Depth 11906'

Formation A Marl

Type of Drilling Fluid WBM

Operator

Company Bayswater Exploration & Production, LLC.

Address 730 17th St.
Denver, CO 80202



Geologist

Name Mark E. Brown

Company Bayswater Exploration & Production, LLC.

Address 730 17th St.
Denver, CO 80202

Other

Robert Davis Senior Lead Wellsite Geologist

Andrew Martens Wellsite Geologist

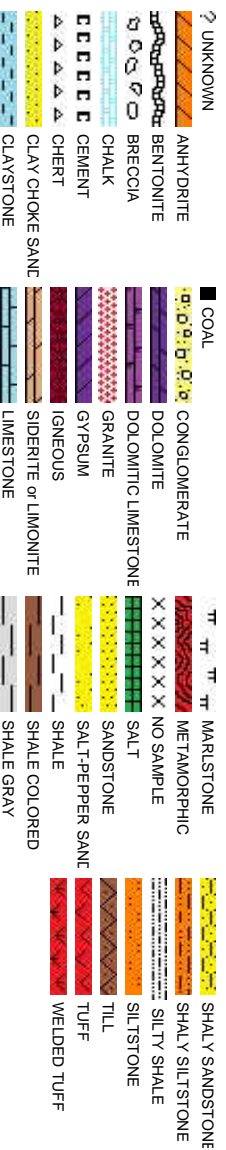
Columbine Logging Computer 148

Bloodhound Unit 331

Zone Color Coding

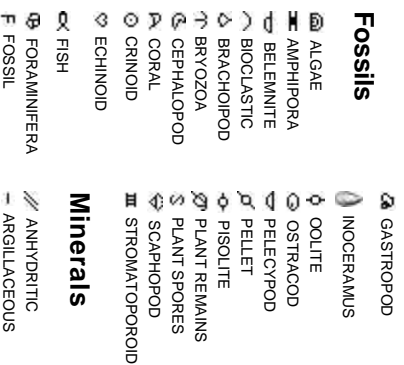


Rock Types

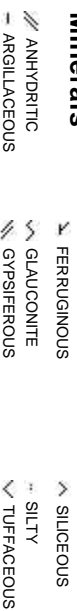
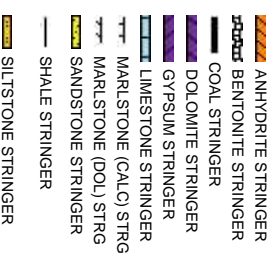


Accessories

Fossils



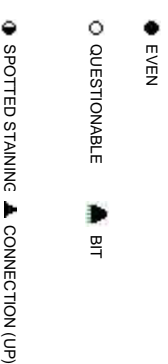
Minerals

**Springer**

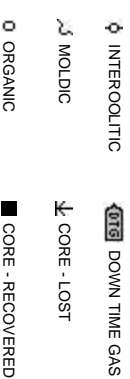
Oil Show



Engineering



Porosity



Other Symbols

 DST INTERVAL  WIRELINE TESTED - LEFT **E** EARTHY

 FAULT  WIRELINE TESTED - RT **FX** FINELYXLN

 FORMATION TOP  DST DRILL STEM TEST **GS** GRAINSTONE

 GAS SHOW  **MINDEPTH** MN DEPTH **L** LITHOGRAPHIC


 OIL SHOW **MX** MICROXLN


 **MINDEPTH** MN DEPTH UP **MS** MUDSTONE

Rounding

 **MINDEPTH** MN DEPTH (DOWN) **A** ANGULAR **PS** PACKSTONE

 NORMAL FAULT **R** ROUNDED **WS** WACKSTONE

 **(LEFT)** OVERTURNED STRATA **B** SUBANG

 REVERSE FAULT **R** SUBRND

Sorting

 CASING **M** MODERATE

Textures

 SIDEWALL CORE (LEFT) **P** POOR

 **(LEFT)** SIDEWALL CORE (RIGHT) **BS** BOUNDSTONE **W** WELL

 SLIDE **C** CHALKY

 **DST** SURVEY **CX** CRYPTOXLN

Slide/Rotate

ROP

COLUMBINE LOGGING RIGGED UP ON
1/8/2015 MANNED 2-PERSON LOGGING.
STARTED LOGGING AT 6000' @ 20:40 MDT
1/8/2015.

Total Gas & Chromatograph

GAS DATA FROM BLOODHOUND
CHROMATOGRAPH UNIT #0331 JOB
NUMBER 66 via IBALL GAS CHART DATA
BASE "Hester Farms J_36_HN.mdb"

Depth Labels

% Lith

Gamma
GAMMA

**SURVEY, GAMMA, and ROP DATA
PROVIDED BY ENSIGN DIRECTIONAL
SERVICES**

Bit #: 2
Type: SMITH SDI513
Size: 8.75
Depth In: 845'
Jets: 7x14
S/N: JK2181

MD: 6,001'
TVD: 5,972.82'
Inclination: 1.2°
Azimuth: 187.6°
VS: -0.22'

TVD (ft)

SHY SLTST: lt-med gy, mod frm-hd, sb plty-sb blkly, gt- stly tex, atg cmt, sh incl, non calc;
SLTY SH: med-dk gy, mod frm, sb plty-plty, rthy-sb rthy tex; slow disse, slow sting, bl cut

MD: 6,092'
TVD: 6,063.81'
Inclination: 1.1°
Azimuth: 107.4°
VS: -0.81'

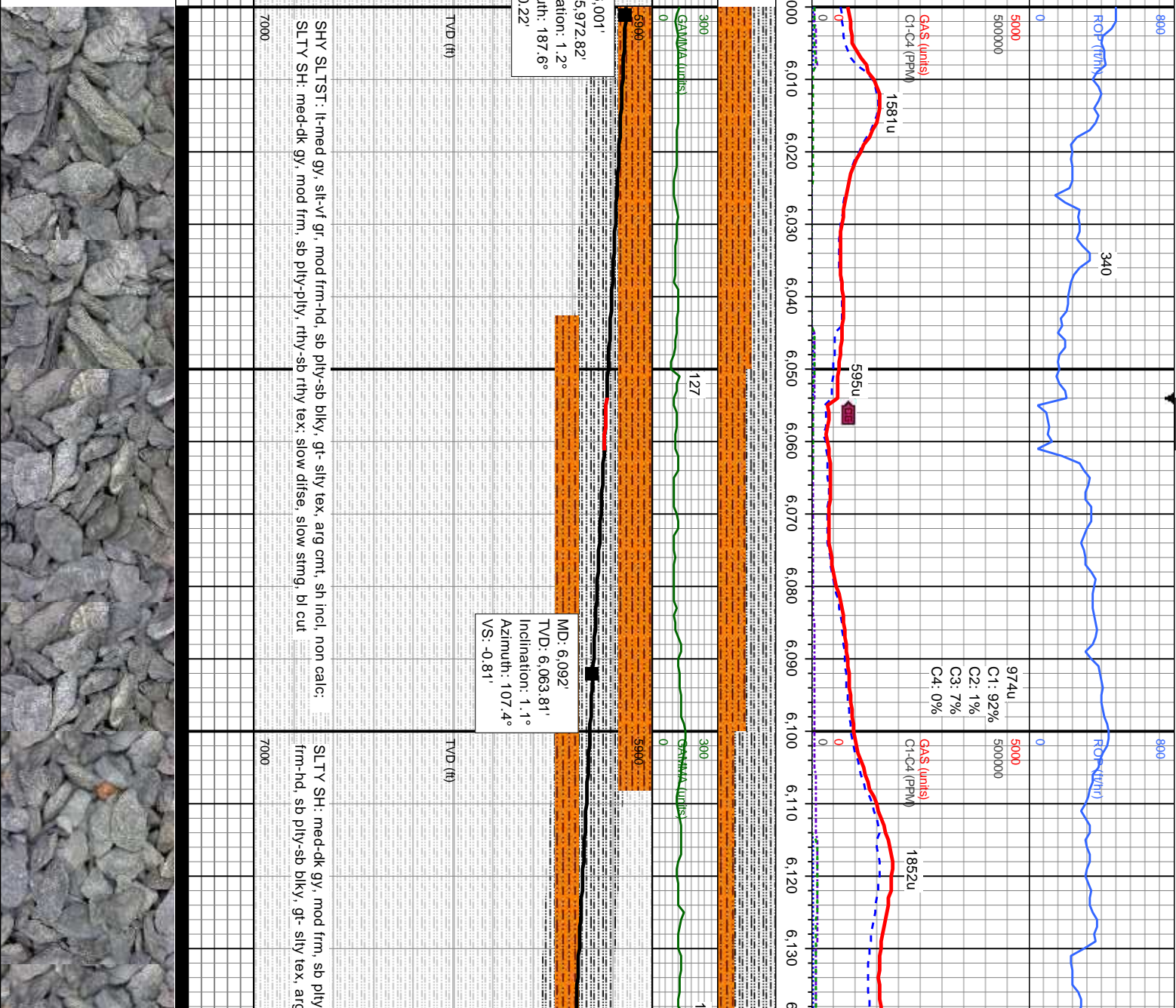
TVD (ft)

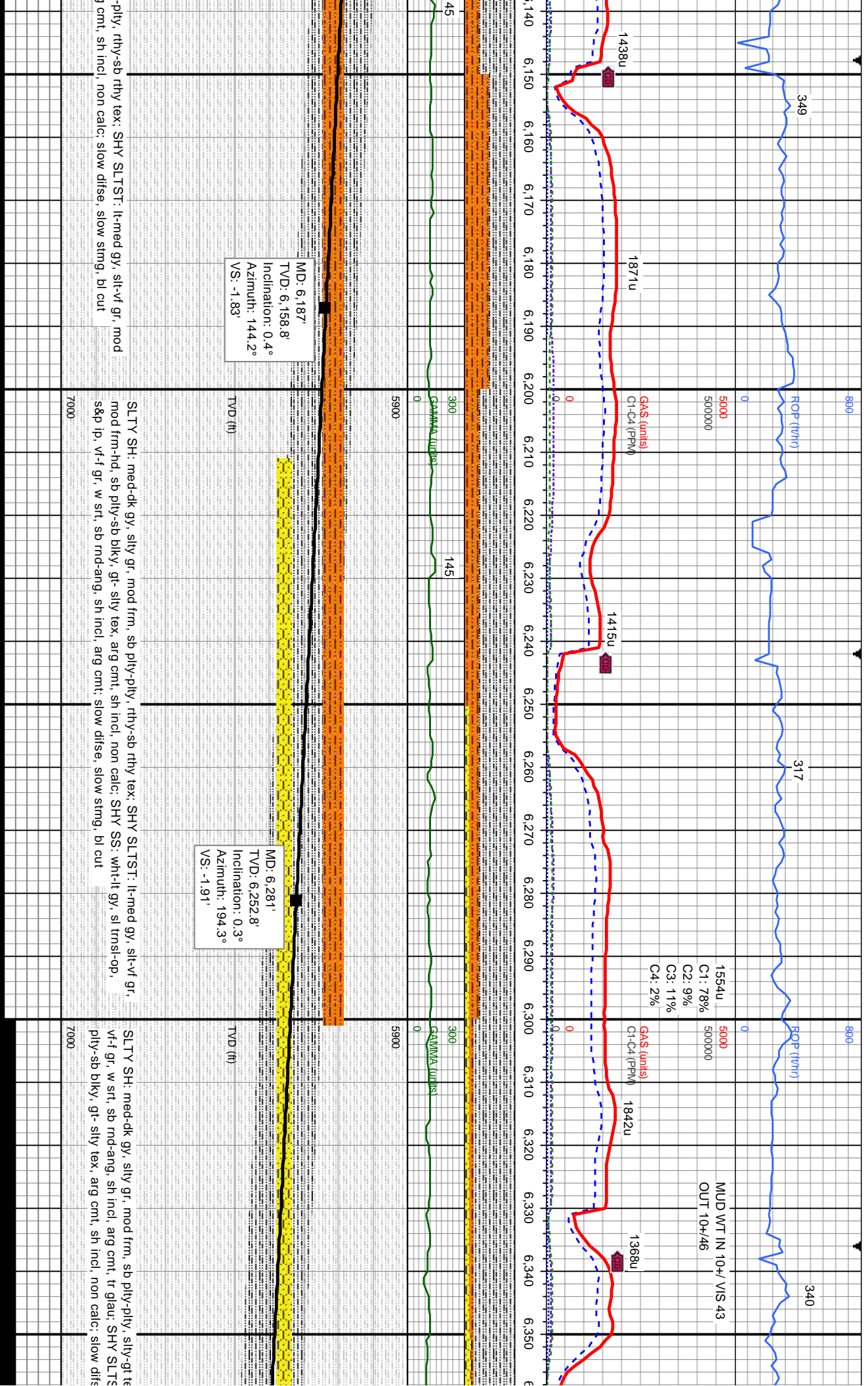
SLTY SH: med-dk gy, mod frm, sb plty
frm-hd, sb plty-sb blkly, gt-silty tex, arg

Oil Show

ST F T M G E

Images





1/9/2015

MINDEPTH

MUD WT IN 10+
OUT 10+47

ROP (ft/hr)

5000

500000

0

1397u

C1: 77%

C2: 11%

C3: 9%

C4: 3%

GA\$ (units)

C1-C4 (PPM)

1764u

1460u

2182u

2367u

300

113

300

102

GAMMA (units)

MD: 6,375'
TVD: 6,346.79'
Inclination: 0.8°
Azimuth: 121.9°
VS: -2.35'

MD: 6,469'
TVD: 6,440.7'
Inclination: 4.7°
Azimuth: 294.3°
VS: 0.48'

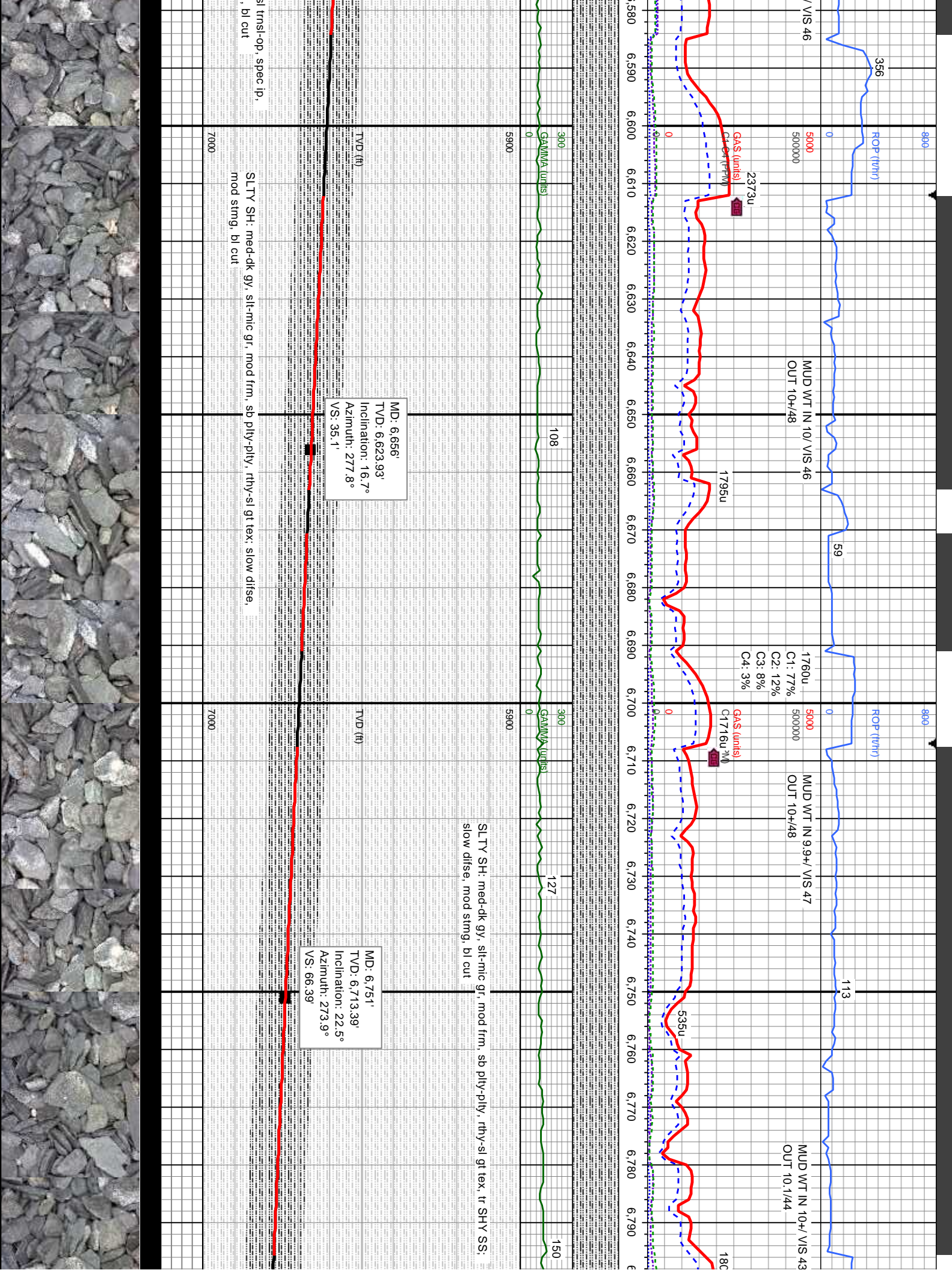
MD: 6,563'
TVD: 6,533.74'
Inclination: 11.4°
Azimuth: 274.8°
VS: 13'

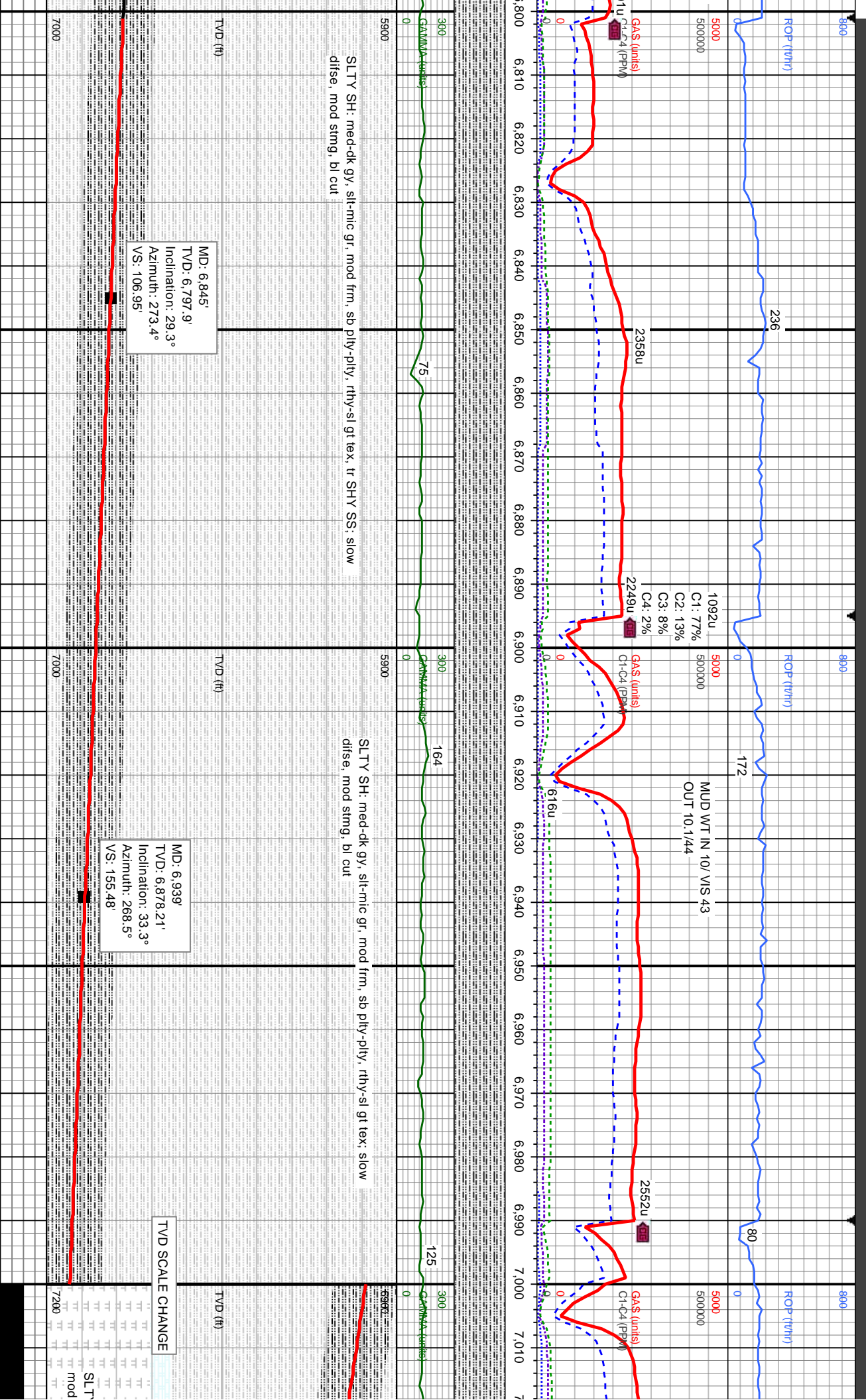
SHY SS: wht-lt gy, sl trns-op, s&p ip,
LT: lt-med gy, slt-vf gr, mod frm-hd, sb
e, mod string, bl cut

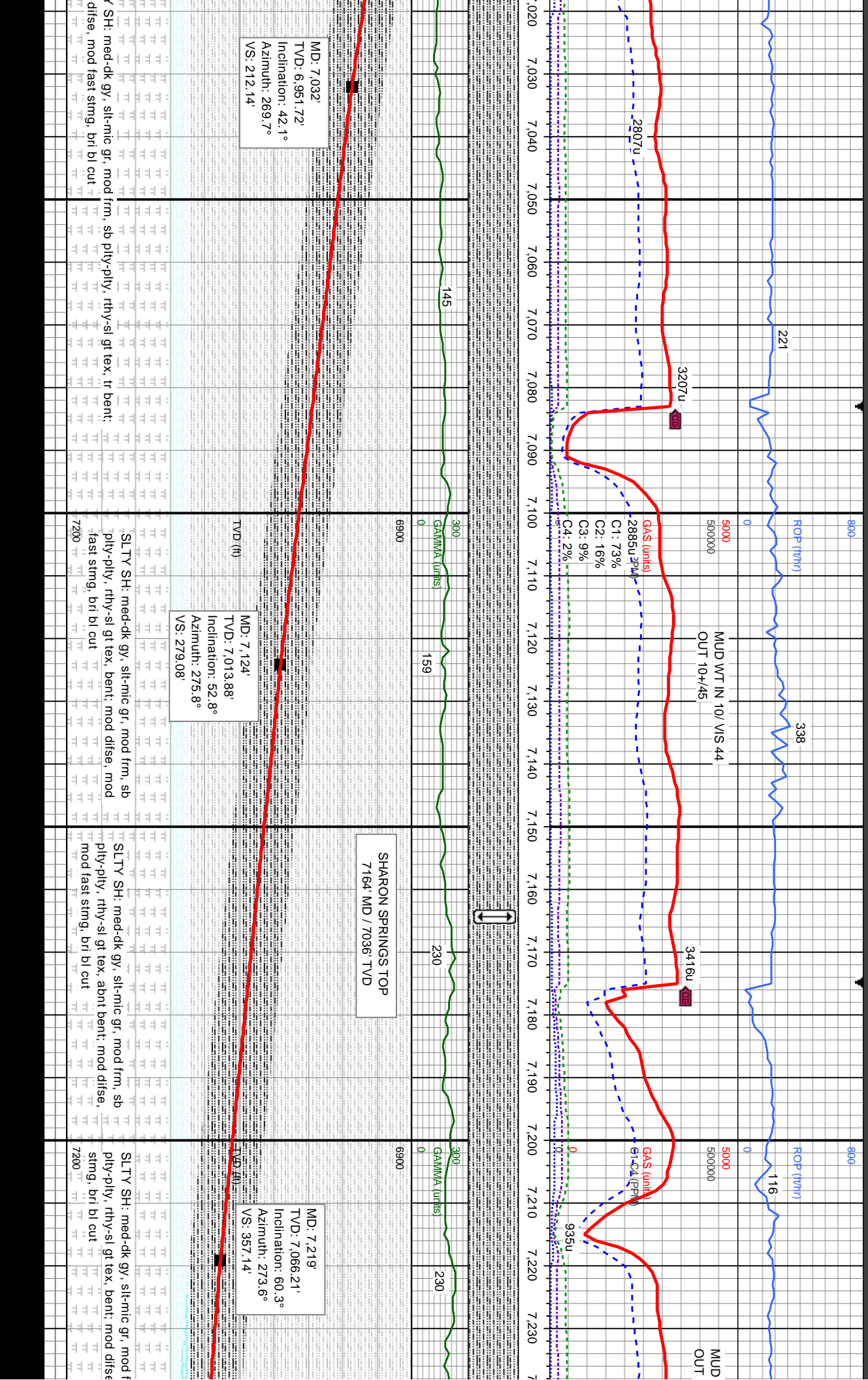
SLTY SH: med-dk gy, slty gr, mod frm, sb pily-pily, rthy-sb rthy tex: SHY SS: wht-lt gy, sl trns-op,
spec ip, s&p ip, vf-f gr, w srt, sb rnd-ang, sh incl, arg cmt, tr glau incl, slow difse, mod string, bl cut

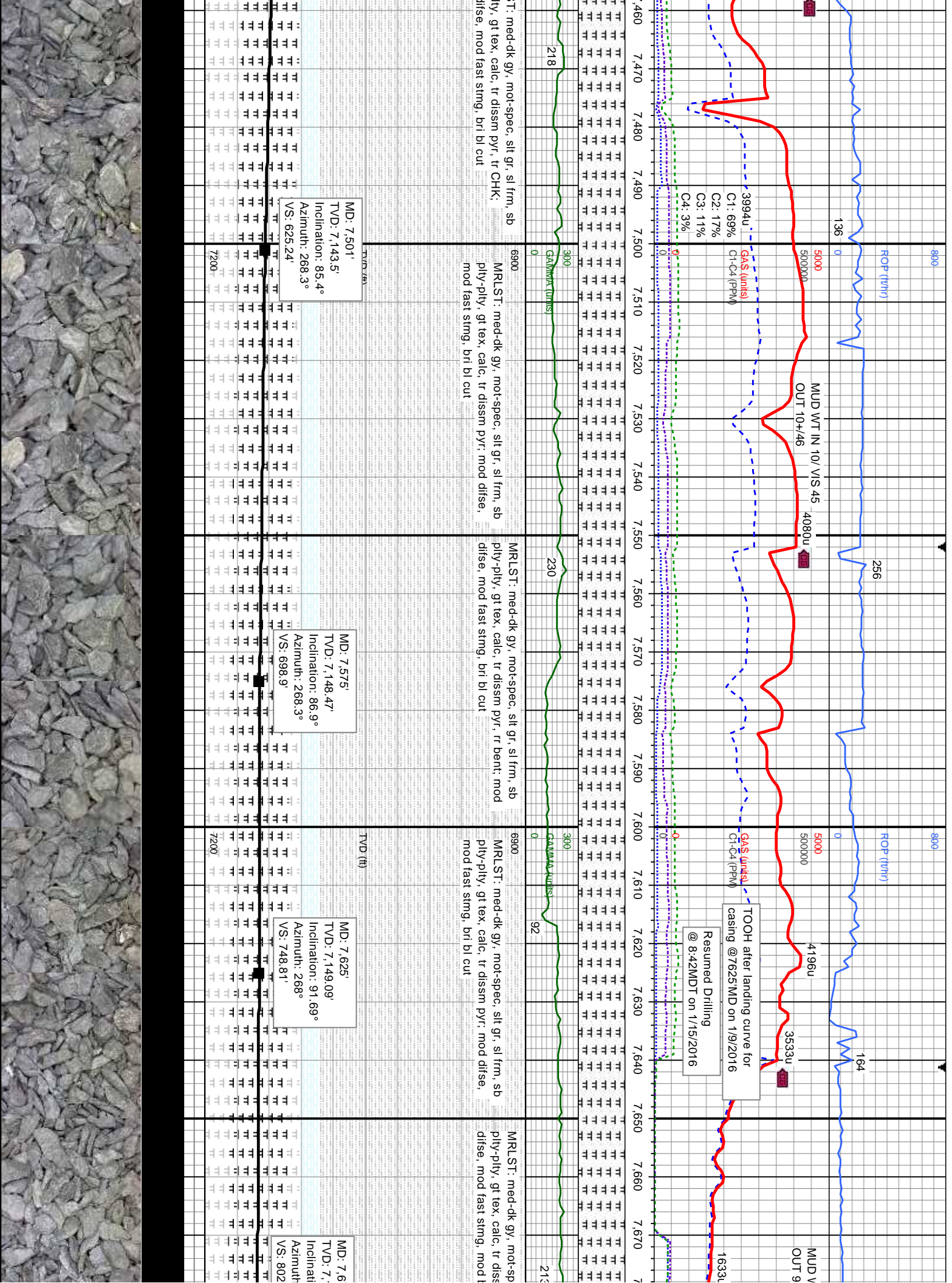
SLTY SH: med-dk gy, mod frm, sb pily-pily, rthy-sb rthy tex: SHY SS: wht-lt gy, s&p ip, vf-f gr, sb rnd-ang, w srt, glauc ip, sh incl, arg cmt, slow difse, mod string

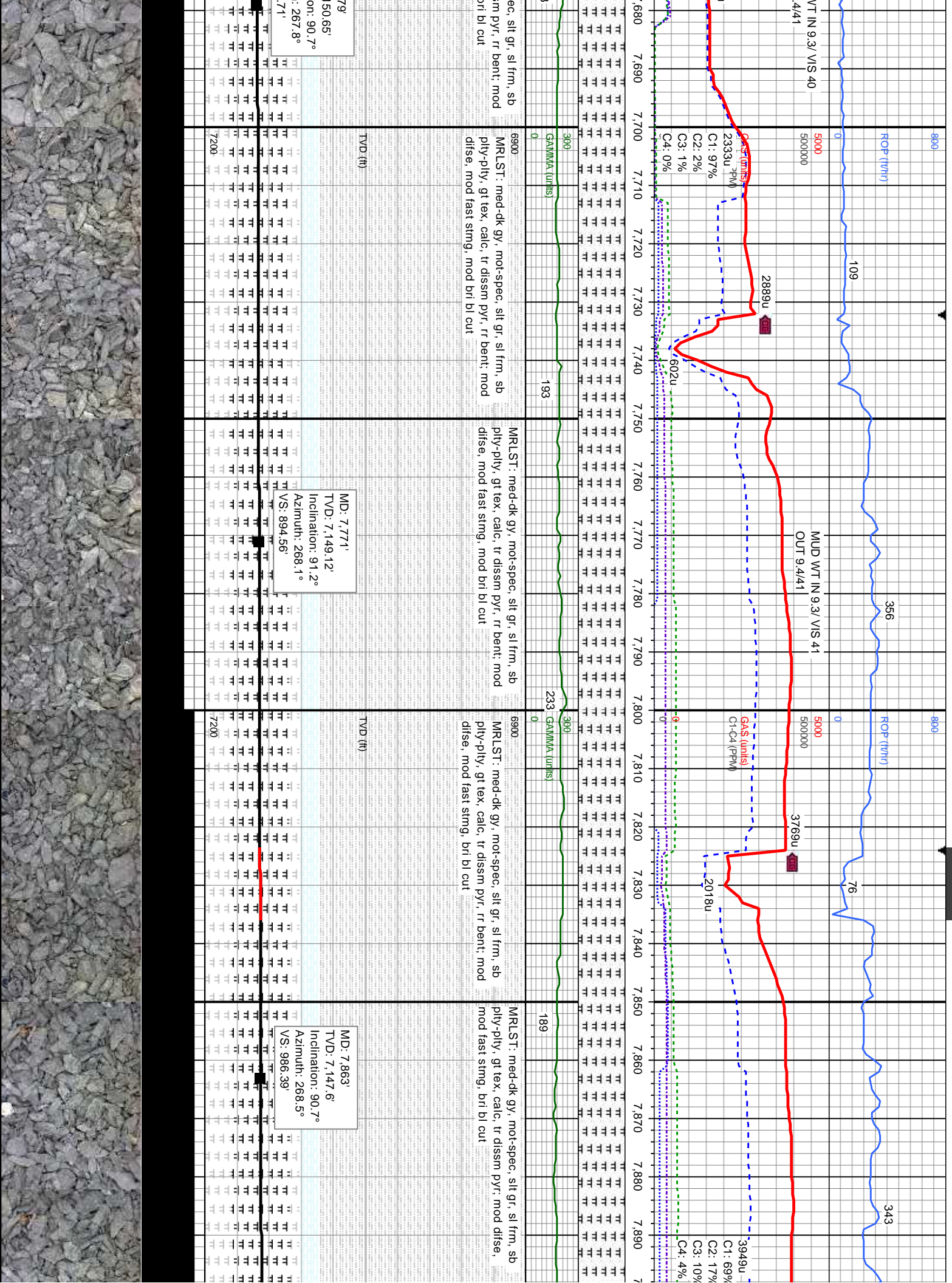


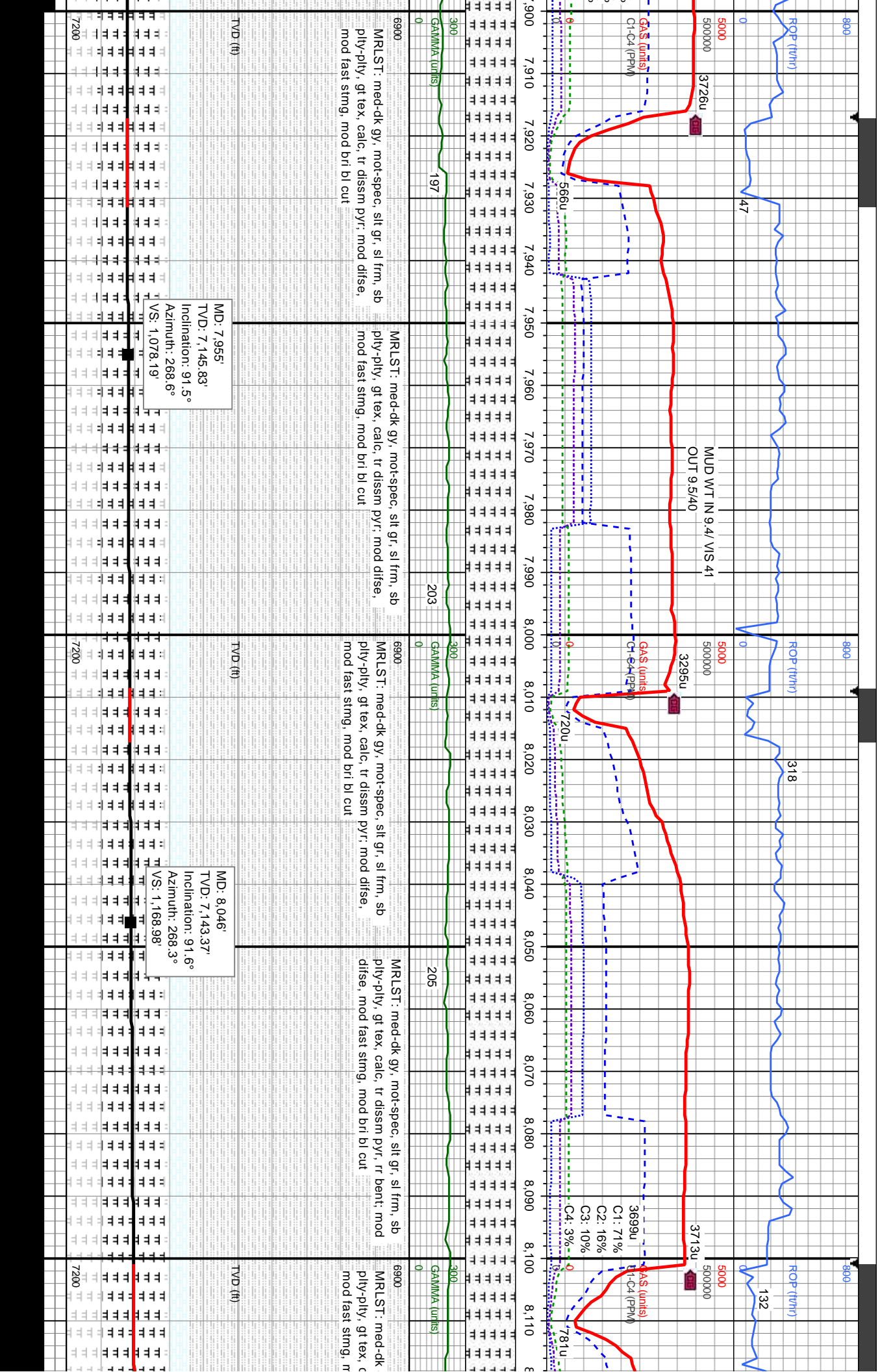


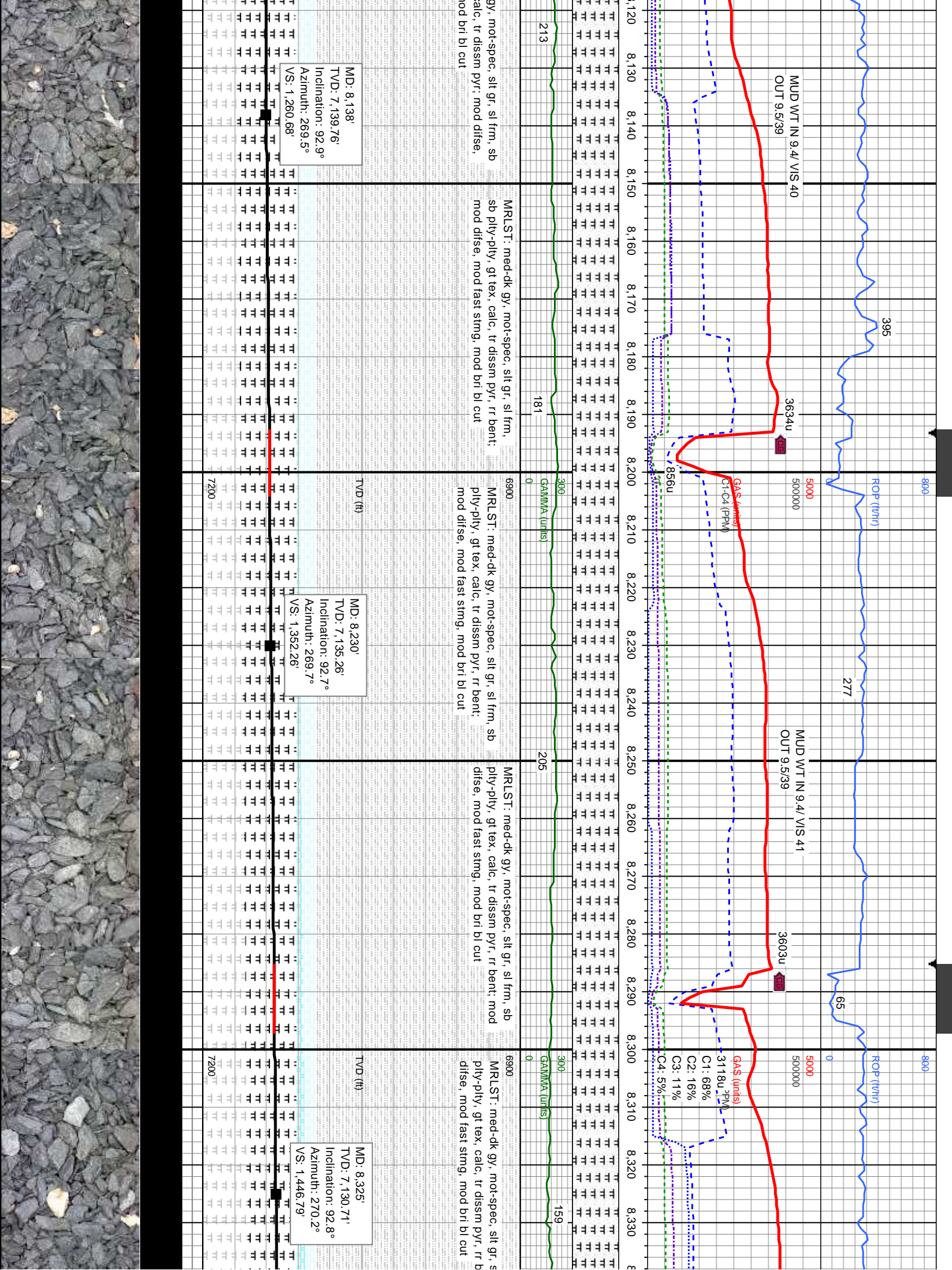


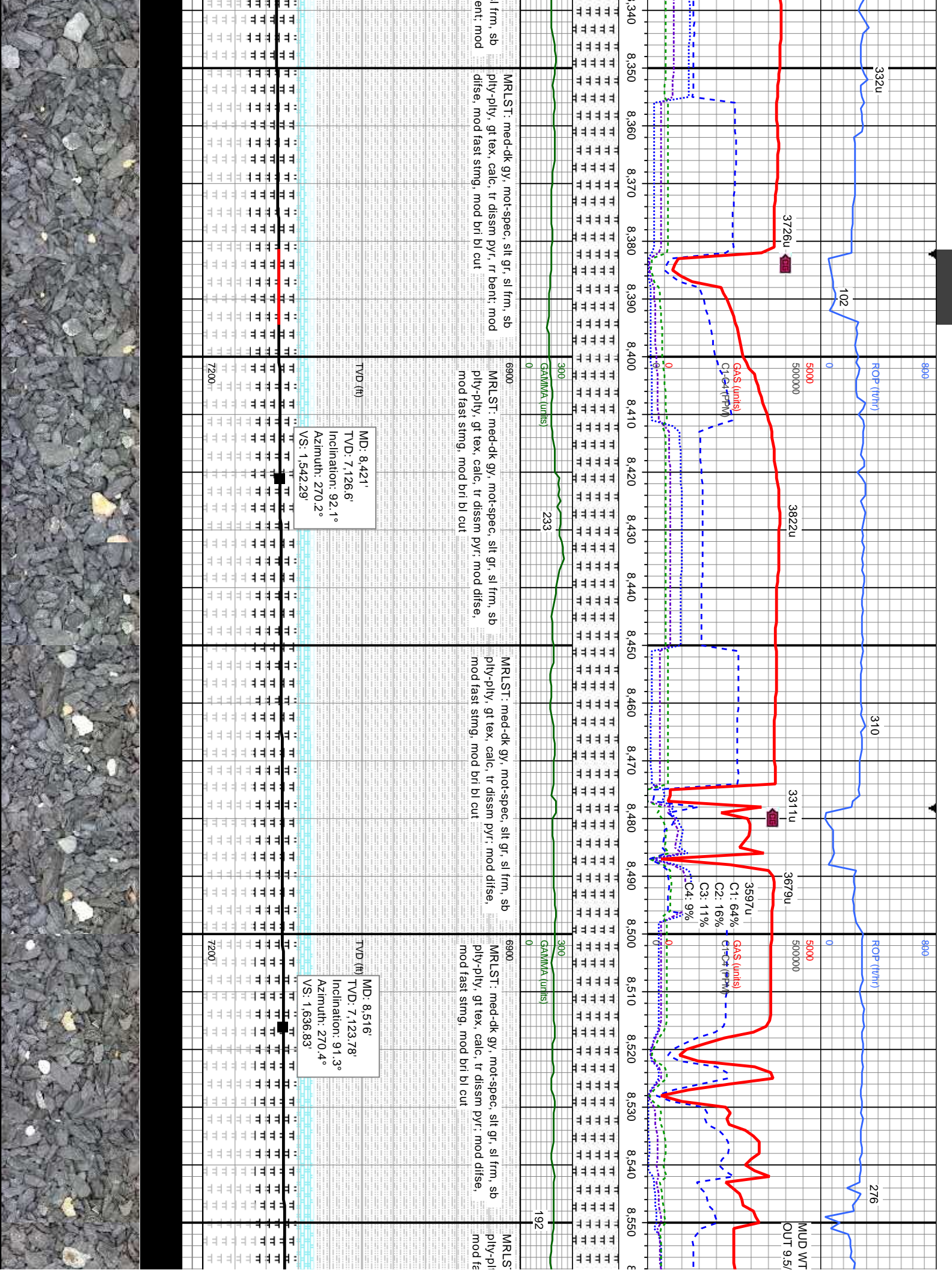


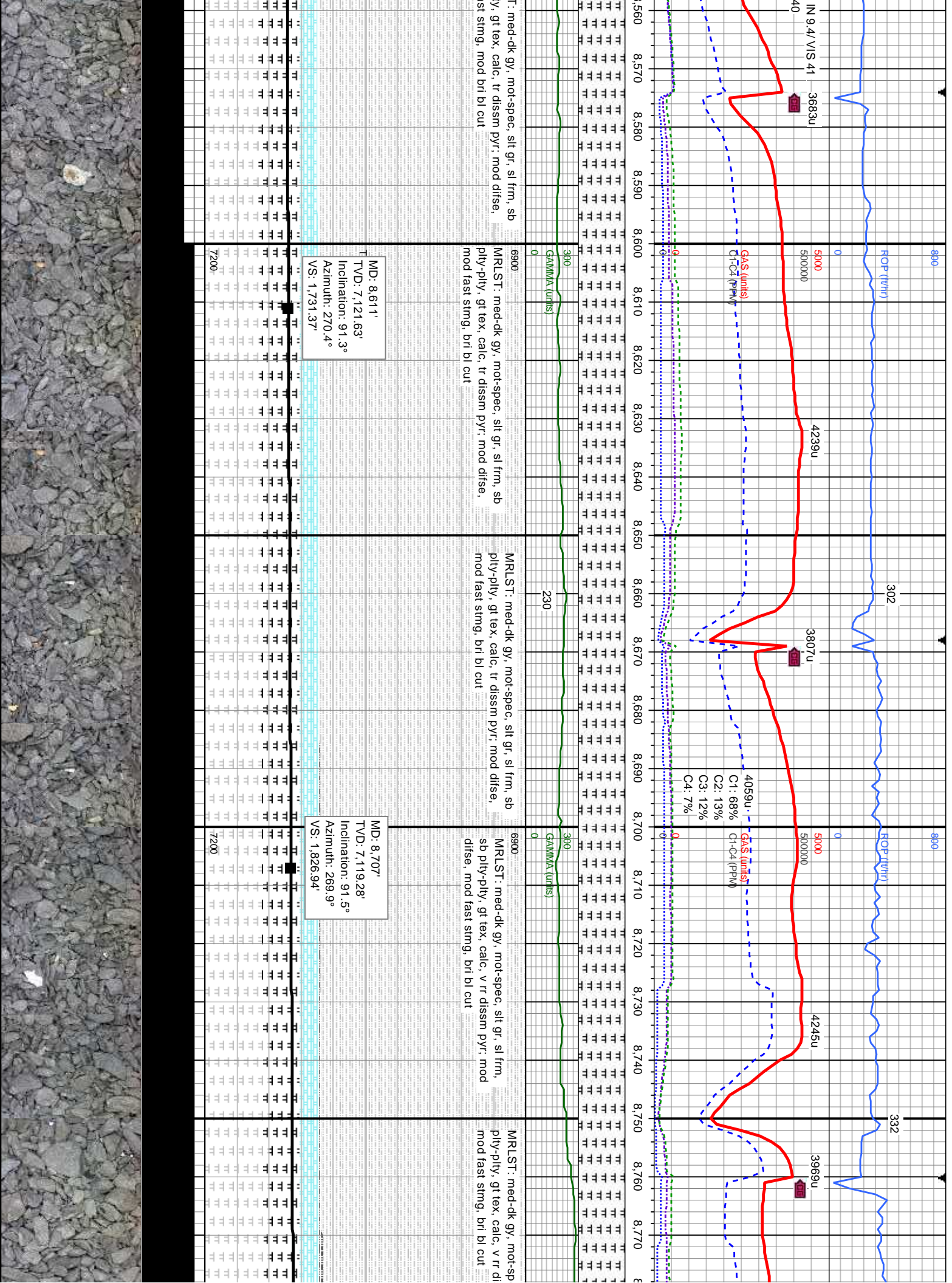


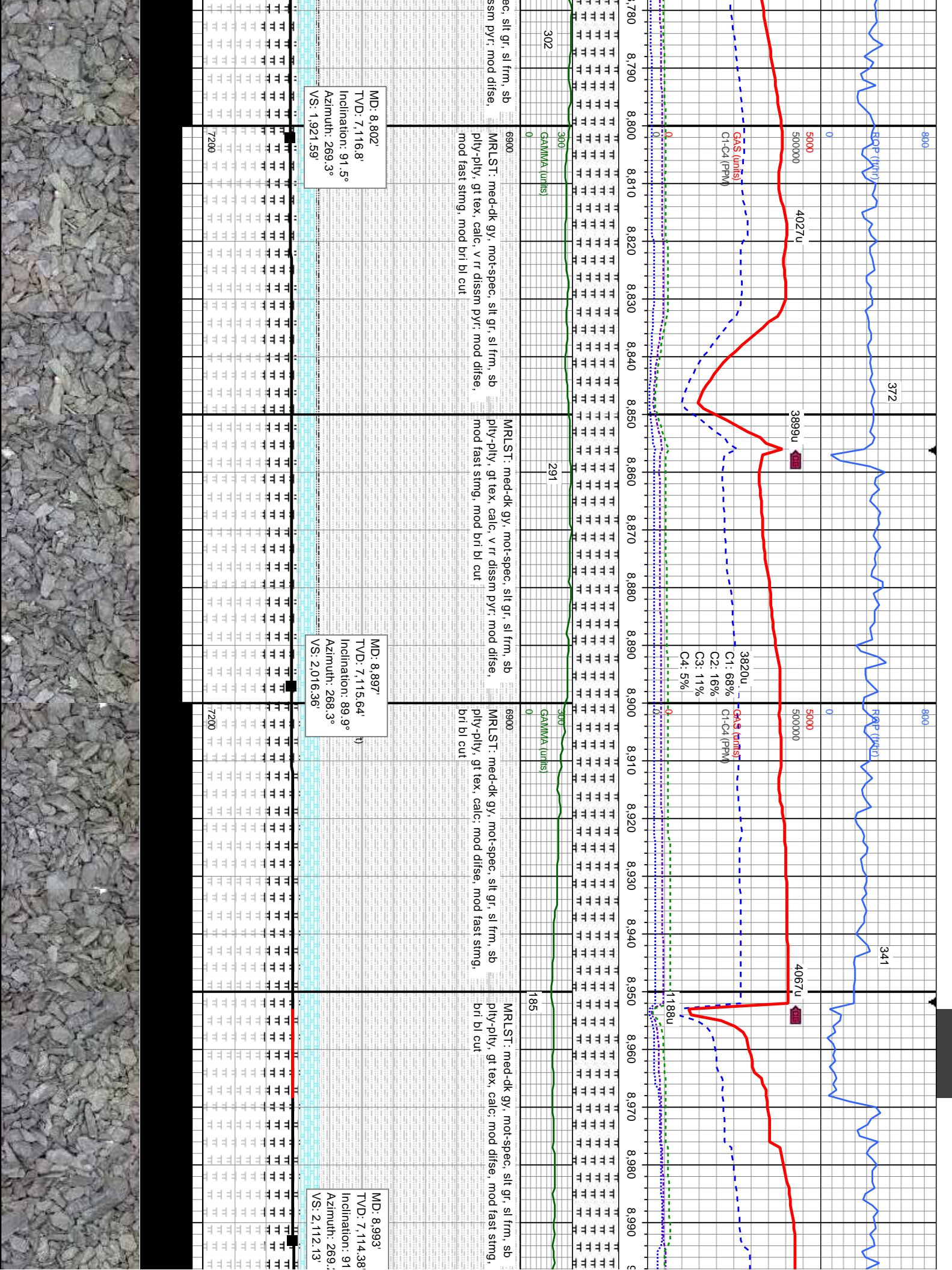


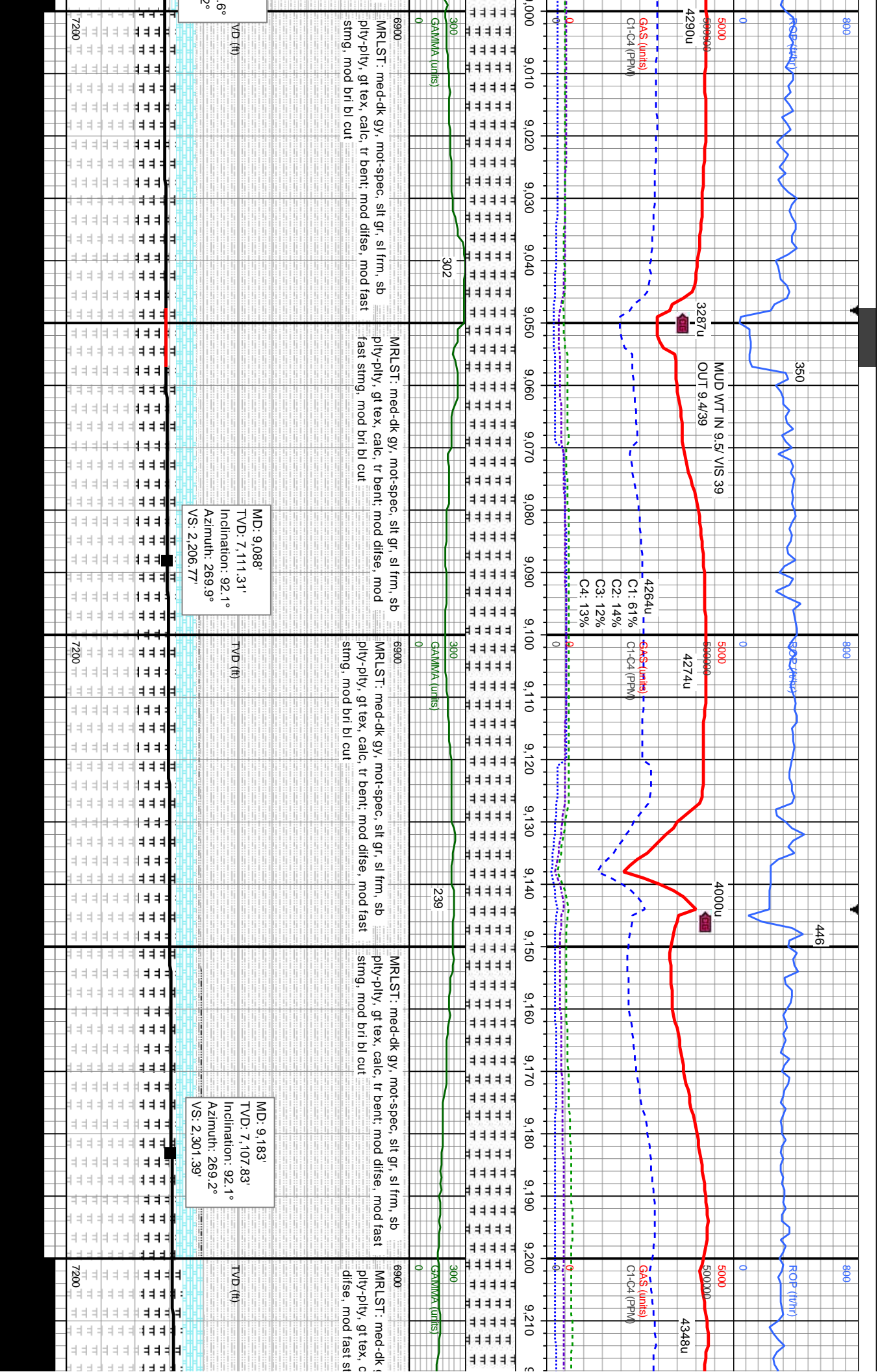


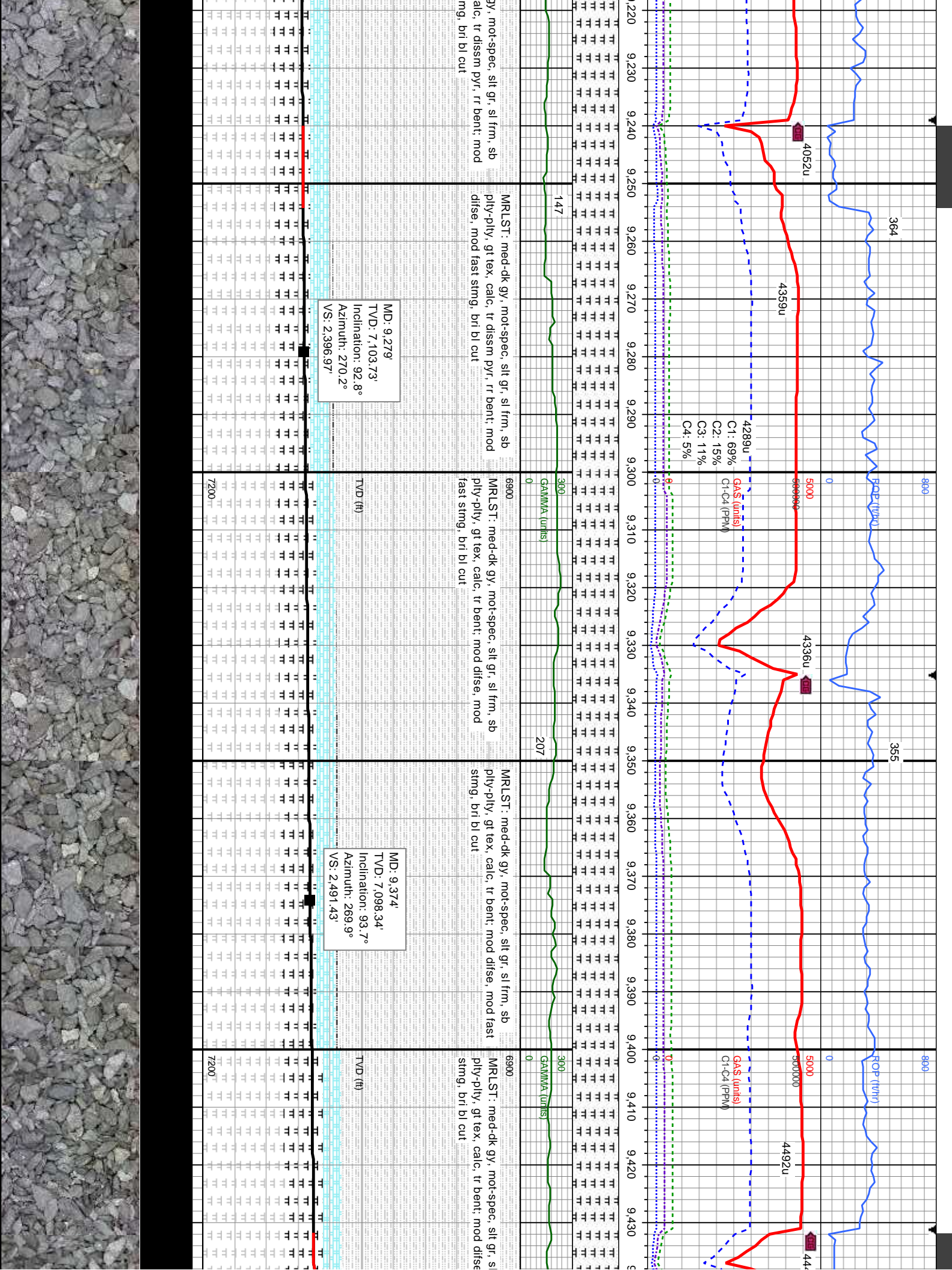


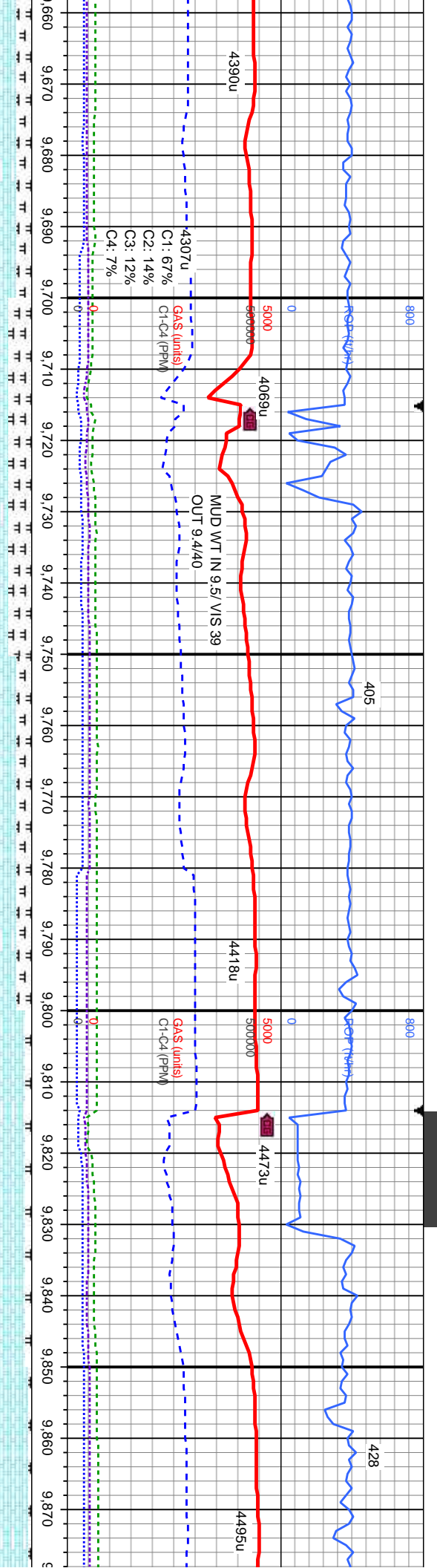








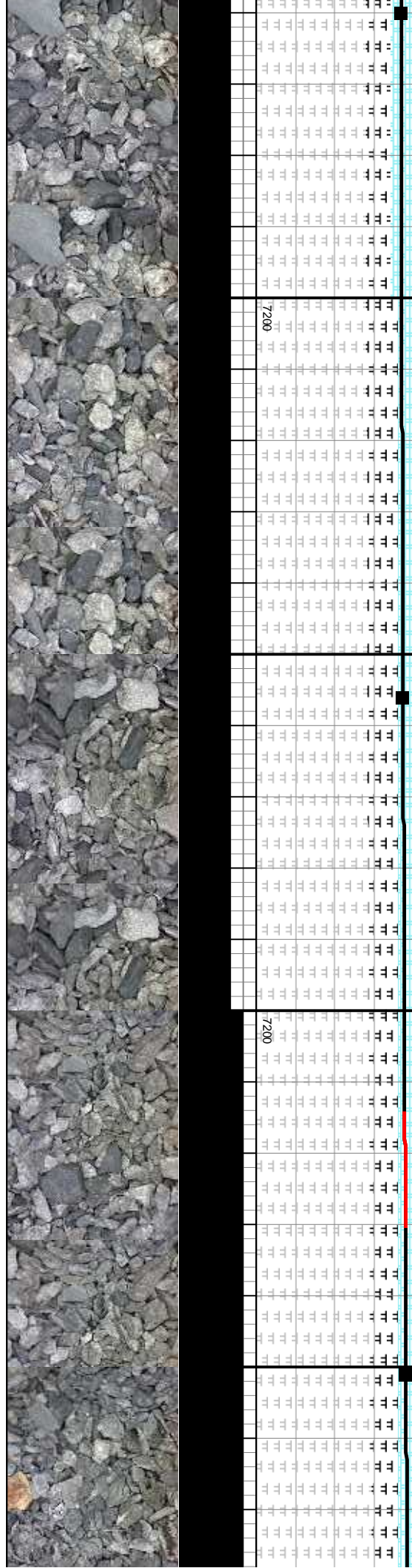


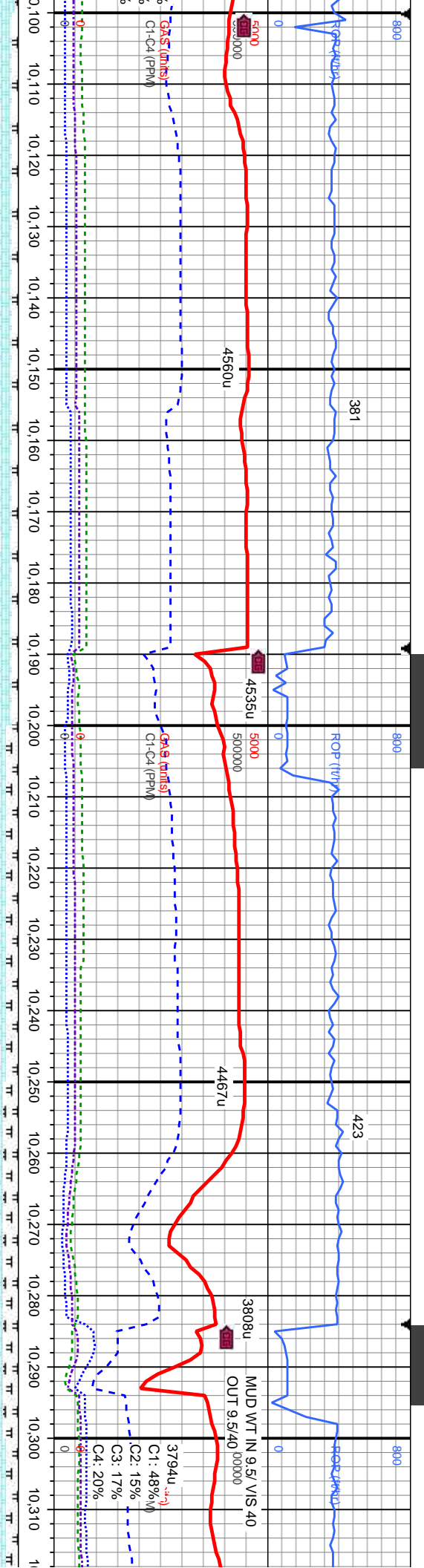


6600	6900	6900	6900
It-med gy, str, sb ply-blky, brit, sl sft, sb rthy-sm tex, mot, v calc, MRLST: med-dk gy, mot-spec, slt gr, sl frm, sb ply-pty, gt tex, calc, tr dissim pyr, tr bent; mod difse, mod fast string, mod bri bl cut	It-med gy, str, sb ply-blky, brit, sl sft, sb rthy-sm tex, mot, v calc, MRLST: med-dk gy, mot-spec, slt gr, sl frm, sb ply-pty, gt tex, calc, tr dissim pyr, tr bent; mod difse, mod fast string, mod bri bl cut	It-med gy, str, sb ply-blky, brit, sl sft, sb rthy-sm tex, mot, v calc, MRLST: med-dk gy, mot-spec, slt gr, sl frm, sb ply-pty, gt tex, calc, tr dissim pyr, tr bent; mod difse, mod fast string, mod bri bl cut	It-med gy, str, sb ply-blky, brit, sl sft, sb rthy-sm tex, mot, v calc, MRLST: med-dk gy, mot-spec, slt gr, sl frm, sb ply-pty, gt tex, calc, tr dissim pyr, tr bent; mod difse, mod fast string, mod bri bl cut

MD: 9.756'
TVD: 7,087.52'
Inclination: 91.5°
Azimuth: 269°
VS: 2.871.86

6600	6900	6900	6900
It-med gy, str, sb ply-blky, brit, sl sft, sb rthy-sm tex, mot, v calc, MRLST: med-dk gy, mot-spec, slt gr, sl frm, sb ply-pty, gt tex, calc, tr dissim pyr, tr bent; mod difse, mod fast string, mod bri bl cut	It-med gy, str, sb ply-blky, brit, sl sft, sb rthy-sm tex, mot, v calc, MRLST: med-dk gy, mot-spec, slt gr, sl frm, sb ply-pty, gt tex, calc, tr dissim pyr, tr bent; mod difse, mod fast string, mod bri bl cut	It-med gy, str, sb ply-blky, brit, sl sft, sb rthy-sm tex, mot, v calc, MRLST: med-dk gy, mot-spec, slt gr, sl frm, sb ply-pty, gt tex, calc, tr dissim pyr, tr bent; mod difse, mod fast string, mod bri bl cut	It-med gy, str, sb ply-blky, brit, sl sft, sb rthy-sm tex, mot, v calc, MRLST: med-dk gy, mot-spec, slt gr, sl frm, sb ply-pty, gt tex, calc, tr dissim pyr, tr bent; mod difse, mod fast string, mod bri bl cut





CHK: lt-med gy, str, sb pty-blky, brit, sl sft, sb rthy-sm tex, mot, v calc, MRLST: med-dk gy, mot-spec, slt gr, sl frm, sb pty-pty, gt tex, calc, tr diss pyr, rr bent; mod difse, mod fast sting, bri bl cut

CHK: lt-med gy, str, sb pty-blky, brit, sl sft, sb rthy-sm tex, mot, v calc, MRLST: med-dk gy, mot-spec, slt gr, sl frm, sb pty-pty, gt tex, calc, tr diss pyr, rr bent; mod difse, mod fast sting, bri bl cut

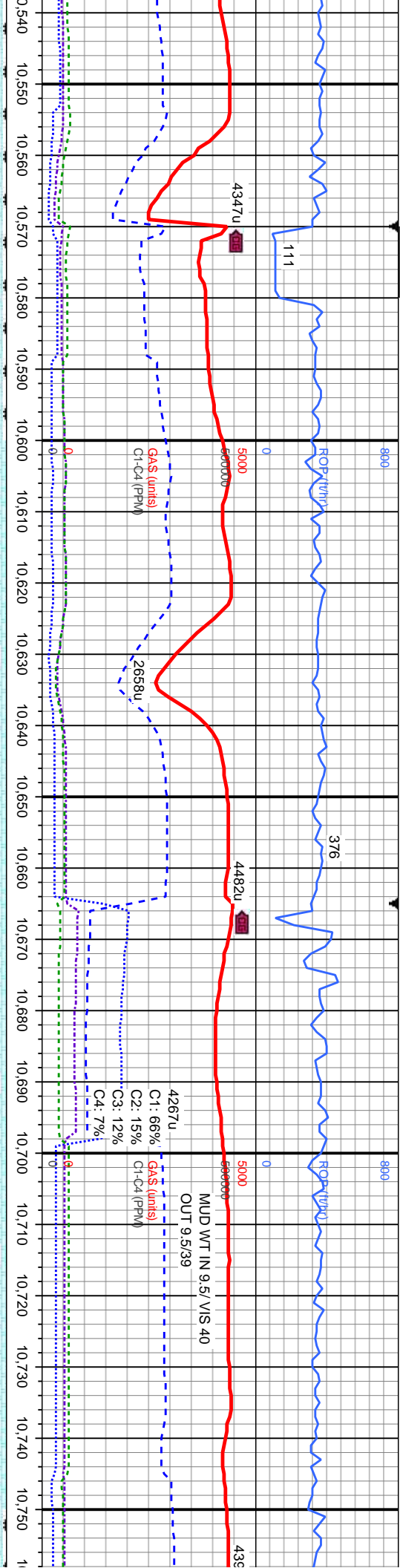
CHK: lt-med gy, str, sb pty-blky, brit, sl sft, sb rthy-sm tex, mot, v calc, MRLST: med-dk gy, mot-spec, slt gr, sl frm, sb pty-pty, gt tex, calc, tr pyr, rr bent; mod difse, mod fast sting, bri bl cut

MD: 10,136'
TVD: 7,084.78'
Inclination: 87.8°
Azimuth: 271.1°
VS: 3,249.76'

MD: 10,231'
TVD: 7,087.44'
Inclination: 89°
Azimuth: 270.7°
VS: 3,344.21'

TVD (ft)	7200	7100	7000	6900	6800	6700	6600	6500	6400	6300	6200	6100	6000	5900	5800	5700	5600	5500	5400	5300	5200	5100	5000	4900	4800	4700	4600	4500	4400	4300	4200	4100	4000	3900	3800	3700	3600	3500	3400	3300	3200	3100	3000	2900	2800	2700	2600	2500	2400	2300	2200	2100	2000	1900	1800	1700	1600	1500	1400	1300	1200	1100	1000	900	800	700	600	500	400	300	200	100	0
----------	------	------	------	------	------	------	------	------	------	------	------	------	------	------	------	------	------	------	------	------	------	------	------	------	------	------	------	------	------	------	------	------	------	------	------	------	------	------	------	------	------	------	------	------	------	------	------	------	------	------	------	------	------	------	------	------	------	------	------	------	------	------	------	-----	-----	-----	-----	-----	-----	-----	-----	-----	---





123	6900	179	6900
CHK: lt-med gy, str, sb pily-biky, brit, sl sft, sb rthy-sm tex, mot, v calc, MRLST: med-dk gy, mot-spec, slt gr, sl frm, sb pily-pily, gt tex, calc, tr pyr, tr bent; mod difse, mod fast stimg, bri bl cut	CHK: lt-med gy, str, sb pily-biky, brit, sl sft, sb rthy-sm tex, mot, v calc, tr MRLST, tr bent; mod difse, mod fast stimg, bri bl cut	CHK: lt-med gy, str, sb pily-biky, brit, sl sft, sb rthy-sm tex, mot, v calc, tr MRLST, tr bent; mod difse, mod fast stimg, bri bl cut	CHK: lt-med gy, str, sb pily-biky, brit, sl sft, sb rthy-sm tex, mot, v calc, tr MRLST, tr bent; mod difse, mod fast stimg, bri bl cut
MD: 10.612' TVD: 7.082.45' Inclination: 90.2° Azimuth: 268.3° VS: 3.724.12'	MD: 10.707' TVD: 7.083.11' Inclination: 89° Azimuth: 267.6° VS: 3.818.98'		



