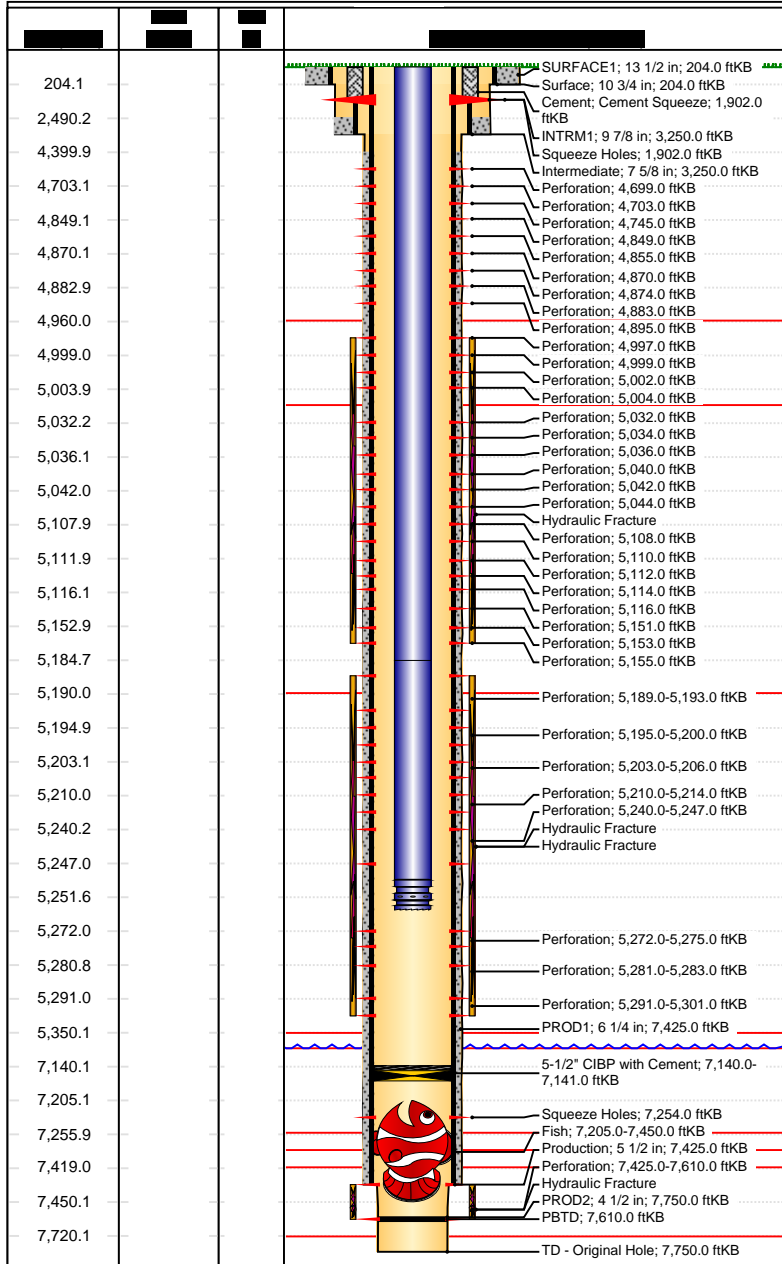




Downhole Well Profile - with Schematic

Well Name: Ute 01

API/UWI 05067052240000	XTO Accounting ID 67609	Permit Number	State/Province Colorado	County La Plata
Location T33N-R07W-S36	Spud Date 4/30/1962 00:00	Original KB Elevation (ft) 6,434.00	Ground/Corrected Ground Elevation (ft) 6,421.00	KB-Ground Distance (ft) 13.00



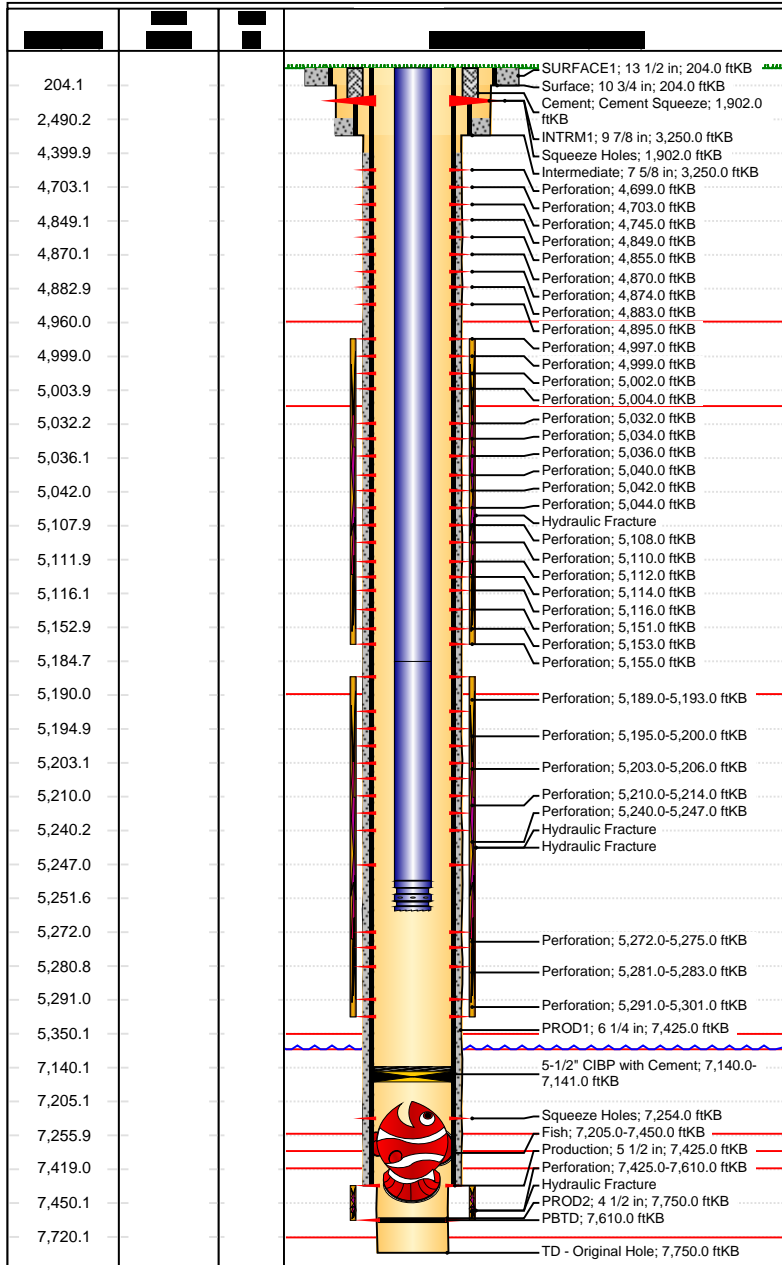
Wellbores							
Wellbore Name Original Hole		Parent Wellbore Original Hole		Wellbore API/UWI 05067052240000			
Start Depth (ftKB)		Profile Type		Kick Off Depth (ftKB)			
Section Des		Size (in)	Act Top (ftKB)	Act Btm (ftKB)			
SURFACE1		13 1/2	13.0	204.0			
INTRM1		9 7/8	204.0	3,250.0			
PROD1		6 1/4	3,250.0	7,425.0			
PROD2		4 1/2	7,425.0	7,750.0			
Zones							
Zone Name		Top (ftKB)	Btm (ftKB)	Current Status			
Lewis		3,250.0	4,967.0				
Cliff House		4,967.0	5,013.0	Active			
Menefee		5,013.0	5,184.0	Active			
Point Lookout		5,184.0	5,350.0	Active			
Dakota		7,361.0	7,610.0	Plugged			
Casing Strings							
Csg Des	Set Depth (ftKB)	OD (in)	Wt/Len (lb/ft)	Grade			
Surface	204.0	10 3/4	32.75	H-40			
Intermediate	3,250.0	7 5/8	24.00	H-40			
Production	7,425.0	5 1/2	15.50	J-55			
Cement							
Des		Type		String			
Surface Casing Cement		Casing		Surface, 204.0ftKB			
Production Casing Cement		Casing		Production, 7,425.0ftKB			
Intermediate Casing Cement		Casing		Intermediate, 3,250.0ftKB			
Cement Squeeze		Squeeze		Intermediate, 3,250.0ftKB			
Tubing Strings							
Tubing Description Tubing - Production		Run Date 12/13/2012		Set Depth (ftKB) 5,252.2			
Item Des	OD (in)	Wt (lb/ft)	Grade	Jts	Len (ft)	Top (ftKB)	Btm (ftKB)
Tubing	2 3/8	4.70	J-55	165	5,171.87	13.0	5,184.9
Tubing	2 3/8	4.70	J-55	2	65.80	5,184.9	5,250.7
Seat Nipple	2 3/8			1	1.10	5,250.7	5,251.8
Notched Collar	2 3/8			1	0.40	5,251.8	5,252.2
Rod Strings							
Rod Description		Run Date			Set Depth (ftKB)		
Item Des	OD (in)	Wt (lb/ft)	Grade	Jts	Len (ft)	Top (ftKB)	Btm (ftKB)
Other In Hole							
Run Date	Des		OD (in)	Top (ftKB)		Btm (ftKB)	
	5-1/2" CIBP with Cement		4.892	7,140.0		7,141.0	
	Fish		5 1/2	7,205.0		7,450.0	



Downhole Well Profile - with Schematic

Well Name: Ute 01

API/UWI 05067052240000	XTO Accounting ID 67609	Permit Number	State/Province Colorado	County La Plata
Location T33N-R07W-S36	Spud Date 4/30/1962 00:00	Original KB Elevation (ft) 6,434.00	Ground/Corrected Ground Elevation (ft) 6,421.00	KB-Ground Distance (ft) 13.00



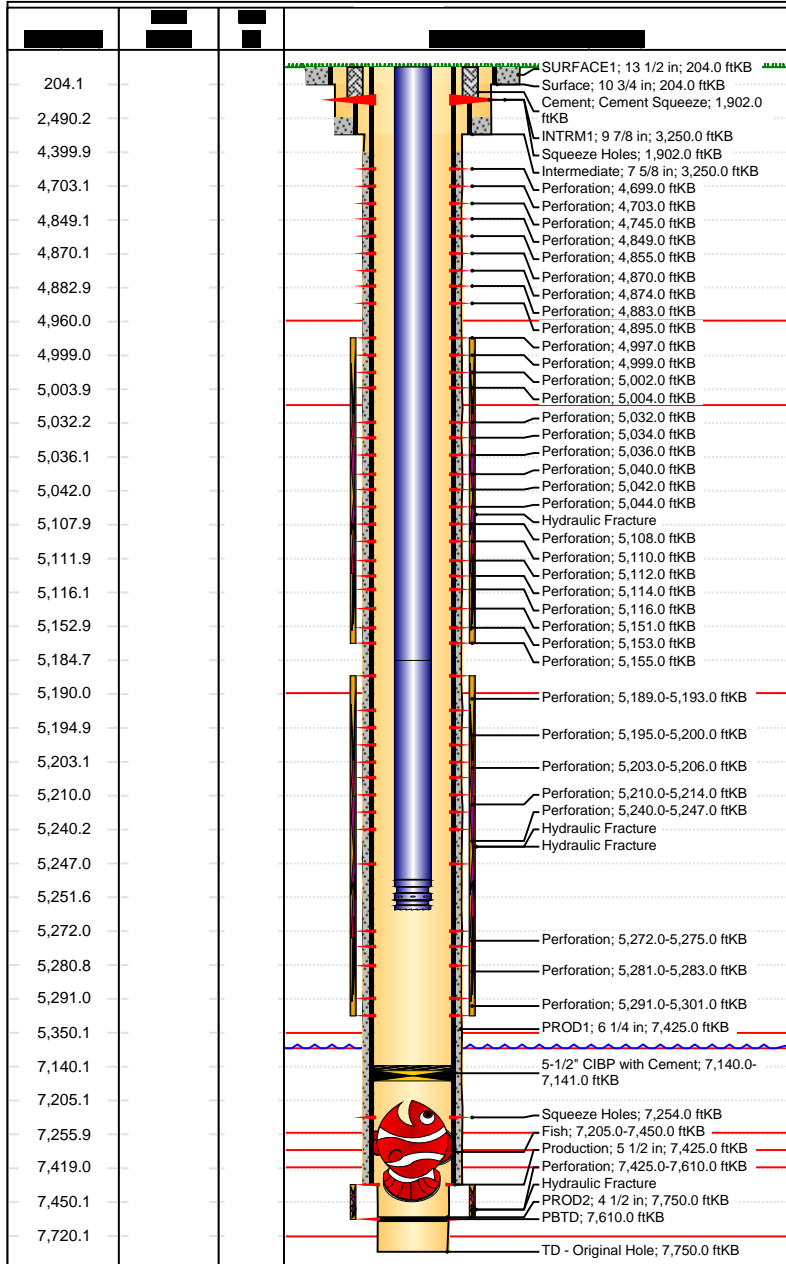
Perforations				
Date	Top (ftKB)	Btm (ftKB)	Zone	
7/28/1997	1,902.0	1,902.0		
4/11/2006	4,699.0	4,699.0	Lewis, Original Hole	
4/11/2006	4,703.0	4,703.0	Lewis, Original Hole	
4/11/2006	4,745.0	4,745.0	Lewis, Original Hole	
4/11/2006	4,849.0	4,849.0	Lewis, Original Hole	
4/11/2006	4,855.0	4,855.0	Lewis, Original Hole	
4/11/2006	4,870.0	4,870.0	Lewis, Original Hole	
4/11/2006	4,874.0	4,874.0	Lewis, Original Hole	
4/11/2006	4,883.0	4,883.0	Lewis, Original Hole	
4/11/2006	4,895.0	4,895.0	Lewis, Original Hole	
4/5/2006	4,997.0	4,997.0	Cliff House, Original Hole	
4/5/2006	4,999.0	4,999.0	Cliff House, Original Hole	
4/5/2006	5,002.0	5,002.0	Cliff House, Original Hole	
4/5/2006	5,004.0	5,004.0	Cliff House, Original Hole	
4/5/2006	5,032.0	5,032.0	Menefee, Original Hole	
4/5/2006	5,034.0	5,034.0	Menefee, Original Hole	
4/5/2006	5,036.0	5,036.0	Menefee, Original Hole	
4/5/2006	5,040.0	5,040.0	Menefee, Original Hole	
4/5/2006	5,042.0	5,042.0	Menefee, Original Hole	
4/5/2006	5,044.0	5,044.0	Menefee, Original Hole	
4/5/2006	5,108.0	5,108.0	Menefee, Original Hole	
4/5/2006	5,110.0	5,110.0	Menefee, Original Hole	
4/5/2006	5,112.0	5,112.0	Menefee, Original Hole	
4/5/2006	5,114.0	5,114.0	Menefee, Original Hole	
4/5/2006	5,116.0	5,116.0	Menefee, Original Hole	
4/5/2006	5,151.0	5,151.0	Menefee, Original Hole	
4/5/2006	5,153.0	5,153.0	Menefee, Original Hole	
4/5/2006	5,155.0	5,155.0	Menefee, Original Hole	
4/4/2006	5,189.0	5,193.0	Point Lookout, Original Hole	
4/4/2006	5,195.0	5,200.0	Point Lookout, Original Hole	
4/4/2006	5,203.0	5,206.0	Point Lookout, Original Hole	
4/4/2006	5,210.0	5,214.0	Point Lookout, Original Hole	
4/4/2006	5,240.0	5,247.0	Point Lookout, Original Hole	
4/4/2006	5,272.0	5,275.0	Point Lookout, Original Hole	
4/4/2006	5,281.0	5,283.0	Point Lookout, Original Hole	
5/24/1962	5,291.0	5,301.0	Point Lookout, Original Hole	
5/24/1962	7,254.0	7,254.0		
5/24/1962	7,425.0	7,610.0	Dakota, Original Hole	



Downhole Well Profile - with Schematic

Well Name: Ute 01

API/UWI 05067052240000	XTO Accounting ID 67609	Permit Number	State/Province Colorado	County La Plata
Location T33N-R07W-S36	Spud Date 4/30/1962 00:00	Original KB Elevation (ft) 6,434.00	Ground/Corrected Ground Elevation (ft) 6,421.00	KB-Ground Distance (ft) 13.00



Stimulations & Treatments						
Frac #	Top Perf (ftKB)	Bottom Perf (ftKB)	AIR (bbl/min)	MIR (bbl/min)	TWP (bbl)	Total Proppant (lb)
1.00	7425	7610				
2.00	5189	5301				
3.00	5189	5301				
4.00	4997	5155				
5.00	4895	4703				