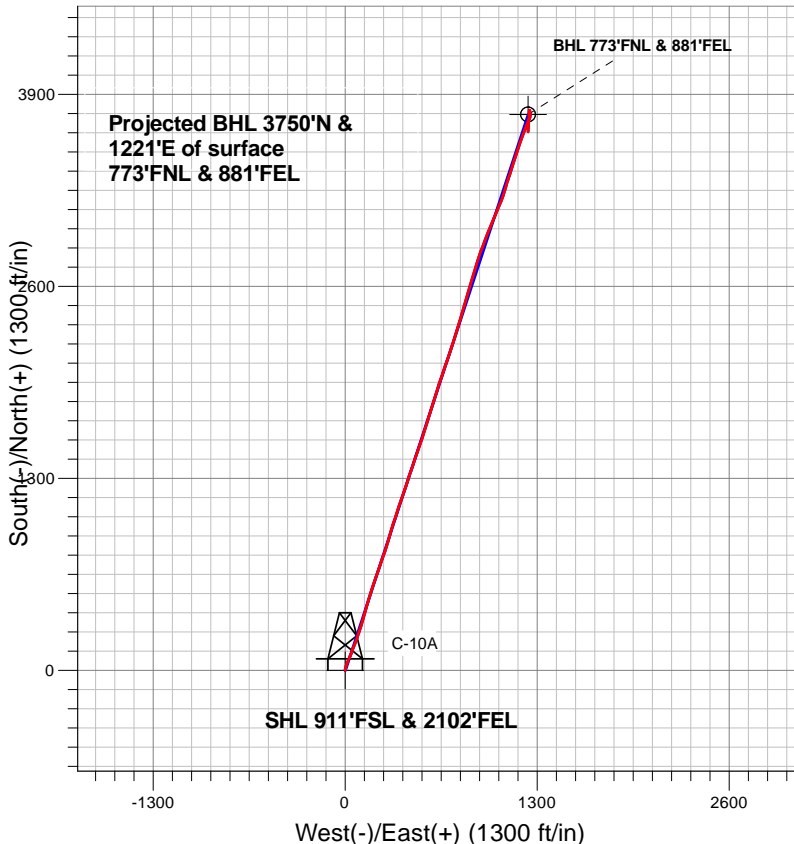
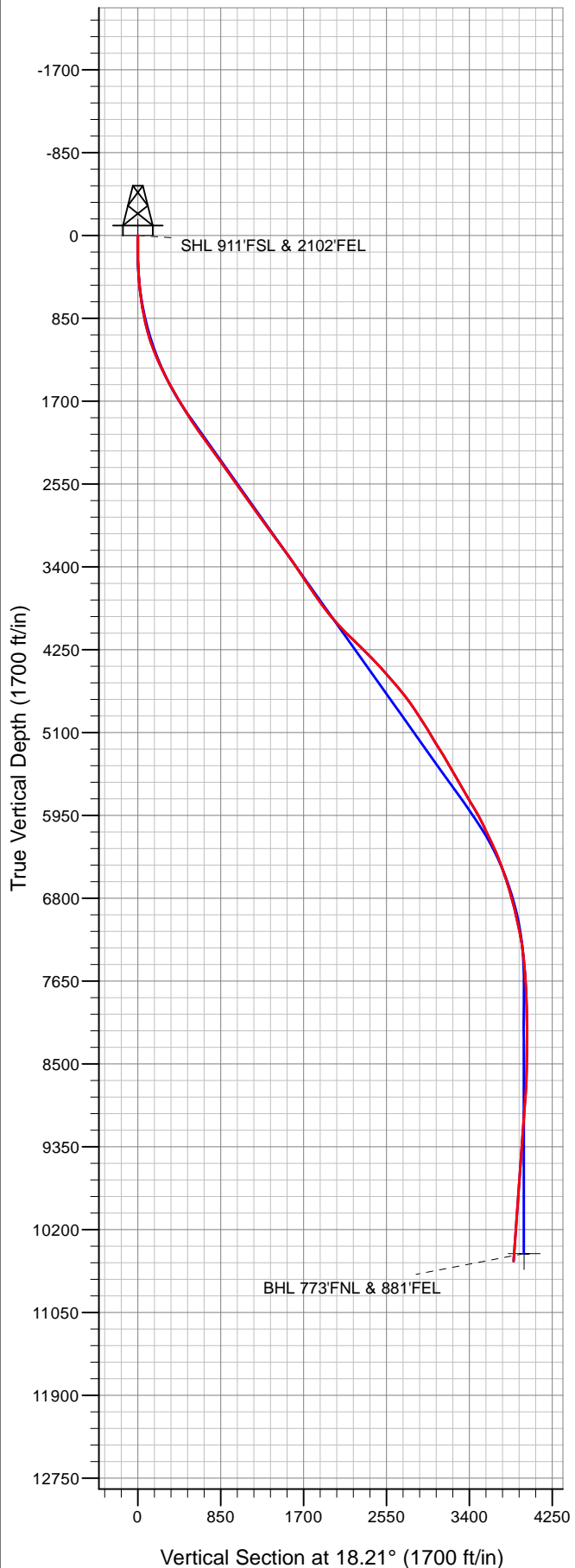


NGL Water Solutions DJ, LLC



LEGEND

- C-10A, Wellbore #1, Plan 2 (Oct 29 th 2015) REV 1 V0
- Wellbore #1
- Survey #1

Final Survey Plot

**Projected Final Survey -
 11700'MD & 10524'TVD @
 4.3 deg Inc 183.3 deg AZ**

Project: SEC.35-T7N-R65W
 Site: NGL C10 Pad Sec.35-T7N-R65W
 Well: NGL C10A
 Plan: Wellbore #1



NGL Water Solutions DJ, LLC

SEC.35-T7N-R65W

NGL C10 Pad Sec.35-T7N-R65W

NGL C10A

Wellbore #1

Survey: Survey #1

Standard Survey Report

07 March, 2016

Company:	NGL Water Solutions DJ, LLC	Local Co-ordinate Reference:	Well NGL C10A
Project:	SEC.35-T7N-R65W	TVD Reference:	RKB @ 4828.0ft (Original Well Elev)
Site:	NGL C10 Pad Sec.35-T7N-R65W	MD Reference:	RKB @ 4828.0ft (Original Well Elev)
Well:	NGL C10A	North Reference:	True
Wellbore:	Wellbore #1	Survey Calculation Method:	Minimum Curvature
Design:	Wellbore #1	Database:	US_EDM

Project	SEC.35-T7N-R65W		
Map System:	US State Plane 1983	System Datum:	Mean Sea Level
Geo Datum:	North American Datum 1983		Using Well Reference Point
Map Zone:	Colorado Northern Zone		Using geodetic scale factor

Site		NGL C10 Pad Sec.35-T7N-R65W			
Site Position:		Northing:	1,435,380.78 usft	Latitude:	40.525140
From:	Lat/Long	Easting:	3,242,372.29 usft	Longitude:	-104.628010
Position Uncertainty:	0.0 ft	Slot Radius:	13-3/16 "	Grid Convergence:	0.56 °

Well	NGL C10A					
Well Position	+N/-S	0.0 ft	Northing:	1,435,377.12 usft	Latitude:	40.525240
	+E/-W	0.0 ft	Easting:	3,242,372.33 usft	Longitude:	-104.628130
Position Uncertainty		0.0 ft	Wellhead Elevation:	0.0 ft	Ground Level:	4,808.0 ft

Wellbore	Wellbore #1				
Magnetics	Model Name	Sample Date	Declination (°)	Dip Angle (°)	Field Strength (nT)
	HDGM	10/7/2015	8.18	67.07	52,573

Design	Wellbore #1				
Audit Notes:					
Version:	1.0	Phase:	ACTUAL	Tie On Depth:	0.0
Vertical Section:	Depth From (TVD) (ft)	+N/-S (ft)	+E/-W (ft)	Direction (°)	
	0.0	0.0	0.0	18.21	

Survey Program	Date	3/7/2016			
From (ft)	To (ft)	Survey (Wellbore)	Tool Name	Description	
137.0	11,700.0	Survey #1 (Wellbore #1)	MWD	MWD - Standard	

Survey										
Measured Depth (ft)	Inclination (°)	Azimuth (°)	Vertical Depth (ft)	+N/-S (ft)	+E/-W (ft)	Vertical Section (ft)	Dogleg Rate (°/100usft)	Build Rate (°/100usft)	Turn Rate (°/100usft)	
0.0	0.00	0.00	0.0	0.0	0.0	0.0	0.00	0.00	0.00	
137.0	0.30	297.50	137.0	0.2	-0.3	0.1	0.22	0.22	0.00	
228.0	0.40	354.50	228.0	0.6	-0.6	0.4	0.38	0.11	62.64	
320.0	2.40	2.40	320.0	2.8	-0.5	2.5	2.18	2.17	8.59	
412.0	3.80	8.70	411.8	7.8	0.0	7.4	1.56	1.52	6.85	
504.0	6.20	16.40	503.5	15.6	1.9	15.4	2.70	2.61	8.37	
600.0	7.80	16.10	598.8	26.8	5.2	27.1	1.67	1.67	-0.31	
657.0	7.80	15.90	655.2	34.2	7.3	34.8	0.05	0.00	-0.35	
742.0	8.70	20.70	739.3	45.8	11.2	47.0	1.33	1.06	5.65	
829.0	10.80	24.50	825.1	59.4	16.9	61.7	2.52	2.41	4.37	

Company:	NGL Water Solutions DJ, LLC	Local Co-ordinate Reference:	Well NGL C10A
Project:	SEC.35-T7N-R65W	TVD Reference:	RKB @ 4828.0ft (Original Well Elev)
Site:	NGL C10 Pad Sec.35-T7N-R65W	MD Reference:	RKB @ 4828.0ft (Original Well Elev)
Well:	NGL C10A	North Reference:	True
Wellbore:	Wellbore #1	Survey Calculation Method:	Minimum Curvature
Design:	Wellbore #1	Database:	US_EDM

Survey									
Measured Depth (ft)	Inclination (°)	Azimuth (°)	Vertical Depth (ft)	+N/-S (ft)	+E/-W (ft)	Vertical Section (ft)	Dogleg Rate (°/100usft)	Build Rate (°/100usft)	Turn Rate (°/100usft)
914.0	13.20	22.90	908.2	75.5	23.9	79.2	2.85	2.82	-1.88
999.0	15.70	21.40	990.5	95.2	31.9	100.4	2.97	2.94	-1.76
1,085.0	18.40	22.10	1,072.7	118.6	41.3	125.6	3.15	3.14	0.81
1,170.0	20.40	22.10	1,152.9	144.8	51.9	153.7	2.35	2.35	0.00
1,255.0	22.40	20.80	1,232.0	173.6	63.2	184.7	2.42	2.35	-1.53
1,341.0	24.30	19.80	1,311.0	205.6	75.0	218.8	2.26	2.21	-1.16
1,426.0	25.80	18.00	1,388.0	239.7	86.7	254.7	1.98	1.76	-2.12
1,511.0	27.40	17.10	1,464.0	275.9	98.1	292.8	1.94	1.88	-1.06
1,597.0	28.80	16.30	1,539.9	314.7	109.8	333.3	1.69	1.63	-0.93
1,682.0	30.00	16.40	1,613.9	354.8	121.5	375.0	1.41	1.41	0.12
1,767.0	31.20	17.10	1,687.1	396.2	134.0	418.2	1.47	1.41	0.82
1,852.0	31.70	17.10	1,759.6	438.6	147.0	462.6	0.59	0.59	0.00
1,937.0	32.40	15.90	1,831.6	481.9	159.8	507.7	1.11	0.82	-1.41
2,022.0	33.10	16.40	1,903.1	526.0	172.6	553.6	0.88	0.82	0.59
2,107.0	33.90	18.70	1,974.0	570.7	186.8	600.5	1.77	0.94	2.71
2,192.0	35.90	19.30	2,043.7	616.7	202.6	649.1	2.39	2.35	0.71
2,277.0	36.10	19.10	2,112.5	663.9	219.1	699.1	0.27	0.24	-0.24
2,361.0	35.80	19.10	2,180.5	710.5	235.2	748.4	0.36	-0.36	0.00
2,446.0	34.70	18.40	2,249.9	757.0	251.0	797.5	1.38	-1.29	-0.82
2,531.0	35.40	18.90	2,319.5	803.2	266.6	846.3	0.89	0.82	0.59
2,616.0	36.50	17.50	2,388.3	850.6	282.1	896.2	1.62	1.29	-1.65
2,701.0	35.60	16.30	2,457.0	898.5	296.7	946.2	1.35	-1.06	-1.41
2,786.0	34.30	17.10	2,526.7	945.1	310.7	994.9	1.62	-1.53	0.94
2,871.0	34.80	17.30	2,596.7	991.2	324.9	1,043.1	0.60	0.59	0.24
2,956.0	35.70	17.80	2,666.1	1,037.9	339.7	1,092.1	1.11	1.06	0.59
3,040.0	36.20	18.00	2,734.1	1,084.9	354.9	1,141.4	0.61	0.60	0.24
3,127.0	35.90	19.10	2,804.5	1,133.4	371.2	1,192.6	0.82	-0.34	1.26
3,212.0	35.70	18.70	2,873.4	1,180.4	387.3	1,242.3	0.36	-0.24	-0.47
3,299.0	35.40	18.00	2,944.2	1,228.4	403.2	1,292.9	0.58	-0.34	-0.80
3,384.0	36.30	18.70	3,013.1	1,275.7	418.9	1,342.7	1.16	1.06	0.82
3,469.0	36.80	18.90	3,081.4	1,323.6	435.2	1,393.3	0.60	0.59	0.24
3,554.0	36.00	18.60	3,149.8	1,371.4	451.4	1,443.8	0.96	-0.94	-0.35
3,638.0	35.50	18.00	3,217.9	1,418.0	466.8	1,492.8	0.73	-0.60	-0.71
3,723.0	35.40	18.90	3,287.2	1,464.7	482.4	1,542.1	0.63	-0.12	1.06
3,808.0	35.90	19.30	3,356.3	1,511.5	498.6	1,591.7	0.65	0.59	0.47
3,893.0	34.30	18.20	3,425.8	1,557.8	514.4	1,640.5	2.02	-1.88	-1.29
3,978.0	33.70	18.60	3,496.3	1,602.9	529.4	1,688.1	0.75	-0.71	0.47
4,064.0	33.50	18.70	3,567.9	1,648.0	544.6	1,735.7	0.24	-0.23	0.12
4,149.0	33.60	17.80	3,638.7	1,692.6	559.3	1,782.6	0.60	0.12	-1.06
4,236.0	34.50	16.10	3,710.8	1,739.2	573.5	1,831.3	1.51	1.03	-1.95
4,321.0	35.40	15.90	3,780.5	1,786.0	586.9	1,880.0	1.07	1.06	-0.24
4,406.0	38.30	17.30	3,848.5	1,834.9	601.5	1,930.9	3.55	3.41	1.65
4,491.0	40.90	18.40	3,914.0	1,886.4	618.1	1,985.1	3.17	3.06	1.29
4,575.0	42.10	18.10	3,976.9	1,939.3	635.5	2,040.8	1.45	1.43	-0.36

Company:	NGL Water Solutions DJ, LLC	Local Co-ordinate Reference:	Well NGL C10A
Project:	SEC.35-T7N-R65W	TVD Reference:	RKB @ 4828.0ft (Original Well Elev)
Site:	NGL C10 Pad Sec.35-T7N-R65W	MD Reference:	RKB @ 4828.0ft (Original Well Elev)
Well:	NGL C10A	North Reference:	True
Wellbore:	Wellbore #1	Survey Calculation Method:	Minimum Curvature
Design:	Wellbore #1	Database:	US_EDM

Survey										
Measured Depth (ft)	Inclination (°)	Azimuth (°)	Vertical Depth (ft)	+N/-S (ft)	+E/-W (ft)	Vertical Section (ft)	Dogleg Rate (°/100usft)	Build Rate (°/100usft)	Turn Rate (°/100usft)	
4,662.0	43.60	18.90	4,040.7	1,995.4	654.3	2,099.9	1.83	1.72	0.92	
4,747.0	44.90	18.70	4,101.6	2,051.5	673.4	2,159.2	1.54	1.53	-0.24	
4,832.0	46.20	19.10	4,161.1	2,108.9	693.1	2,219.9	1.57	1.53	0.47	
4,917.0	45.60	18.20	4,220.2	2,166.8	712.6	2,280.9	1.04	-0.71	-1.06	
5,002.0	44.90	18.00	4,280.1	2,224.1	731.3	2,341.3	0.84	-0.82	-0.24	
5,086.0	44.50	17.30	4,339.8	2,280.5	749.3	2,400.4	0.76	-0.48	-0.83	
5,173.0	43.60	16.40	4,402.3	2,338.3	766.8	2,460.9	1.26	-1.03	-1.03	
5,258.0	41.80	16.10	4,464.8	2,393.7	782.9	2,518.5	2.13	-2.12	-0.35	
5,345.0	40.90	15.90	4,530.1	2,448.9	798.8	2,575.9	1.05	-1.03	-0.23	
5,430.0	40.50	16.40	4,594.5	2,502.2	814.2	2,631.3	0.61	-0.47	0.59	
5,515.0	39.50	17.30	4,659.7	2,554.5	830.0	2,685.9	1.36	-1.18	1.06	
5,600.0	37.60	16.60	4,726.1	2,605.1	845.5	2,738.9	2.29	-2.24	-0.82	
5,685.0	35.60	16.60	4,794.4	2,653.7	860.0	2,789.5	2.35	-2.35	0.00	
5,772.0	34.40	16.10	4,865.6	2,701.6	874.0	2,839.4	1.42	-1.38	-0.57	
5,856.0	33.10	17.10	4,935.5	2,746.3	887.3	2,886.0	1.68	-1.55	1.19	
5,941.0	31.70	18.40	5,007.2	2,789.7	901.2	2,931.6	1.84	-1.65	1.53	
6,027.0	31.10	20.10	5,080.6	2,832.0	916.0	2,976.4	1.24	-0.70	1.98	
6,111.0	31.10	20.20	5,152.6	2,872.7	930.9	3,019.7	0.06	0.00	0.12	
6,196.0	32.40	20.80	5,224.8	2,914.6	946.6	3,064.4	1.57	1.53	0.71	
6,281.0	31.70	21.70	5,296.9	2,956.6	962.9	3,109.5	1.00	-0.82	1.06	
6,366.0	30.50	22.60	5,369.7	2,997.3	979.5	3,153.3	1.51	-1.41	1.06	
6,451.0	30.30	22.80	5,443.0	3,037.0	996.1	3,196.2	0.26	-0.24	0.24	
6,536.0	30.40	22.40	5,516.3	3,076.6	1,012.6	3,239.0	0.27	0.12	-0.47	
6,621.0	29.50	23.80	5,590.0	3,115.7	1,029.2	3,281.3	1.34	-1.06	1.65	
6,706.0	30.00	22.60	5,663.8	3,154.4	1,045.8	3,323.3	0.91	0.59	-1.41	
6,791.0	29.90	20.30	5,737.4	3,193.9	1,061.3	3,365.6	1.36	-0.12	-2.71	
6,878.0	30.90	17.00	5,812.5	3,235.6	1,075.4	3,409.6	2.24	1.15	-3.79	
6,963.0	30.70	15.60	5,885.5	3,277.4	1,087.6	3,453.1	0.88	-0.24	-1.65	
7,049.0	29.00	18.00	5,960.1	3,318.4	1,100.0	3,495.9	2.42	-1.98	2.79	
7,133.0	25.80	19.30	6,034.7	3,355.0	1,112.3	3,534.6	3.88	-3.81	1.55	
7,218.0	24.70	16.30	6,111.5	3,389.5	1,123.4	3,570.8	1.98	-1.29	-3.53	
7,303.0	25.80	16.80	6,188.4	3,424.3	1,133.7	3,607.1	1.32	1.29	0.59	
7,388.0	25.10	19.30	6,265.2	3,459.0	1,145.0	3,643.6	1.51	-0.82	2.94	
7,473.0	22.20	18.90	6,343.0	3,491.2	1,156.2	3,677.7	3.42	-3.41	-0.47	
7,555.0	20.80	19.30	6,419.3	3,519.6	1,166.0	3,707.7	1.72	-1.71	0.49	
7,644.0	20.90	18.20	6,502.5	3,549.6	1,176.2	3,739.4	0.45	0.11	-1.24	
7,728.0	18.40	18.00	6,581.6	3,576.4	1,185.0	3,767.6	2.98	-2.98	-0.24	
7,813.0	16.70	16.10	6,662.6	3,600.9	1,192.5	3,793.3	2.11	-2.00	-2.24	
7,898.0	16.40	21.70	6,744.1	3,623.8	1,200.3	3,817.4	1.91	-0.35	6.59	
7,983.0	15.60	23.80	6,825.8	3,645.4	1,209.4	3,840.8	1.16	-0.94	2.47	
8,068.0	13.60	20.50	6,908.1	3,665.2	1,217.5	3,862.2	2.55	-2.35	-3.88	
8,155.0	12.40	18.90	6,992.8	3,683.7	1,224.1	3,881.7	1.44	-1.38	-1.84	
8,242.0	11.50	24.00	7,078.0	3,700.4	1,230.7	3,899.7	1.59	-1.03	5.86	

Company:	NGL Water Solutions DJ, LLC	Local Co-ordinate Reference:	Well NGL C10A
Project:	SEC.35-T7N-R65W	TVD Reference:	RKB @ 4828.0ft (Original Well Elev)
Site:	NGL C10 Pad Sec.35-T7N-R65W	MD Reference:	RKB @ 4828.0ft (Original Well Elev)
Well:	NGL C10A	North Reference:	True
Wellbore:	Wellbore #1	Survey Calculation Method:	Minimum Curvature
Design:	Wellbore #1	Database:	US_EDM

Survey										
Measured Depth (ft)	Inclination (°)	Azimuth (°)	Vertical Depth (ft)	+N/-S (ft)	+E/-W (ft)	Vertical Section (ft)	Dogleg Rate (°/100usft)	Build Rate (°/100usft)	Turn Rate (°/100usft)	
8,328.0	11.50	26.80	7,162.2	3,715.9	1,238.0	3,916.7	0.65	0.00	3.26	
8,415.0	10.90	23.50	7,247.6	3,731.2	1,245.2	3,933.5	1.01	-0.69	-3.79	
8,500.0	8.00	13.10	7,331.4	3,744.3	1,249.8	3,947.4	3.95	-3.41	-12.24	
8,585.0	6.20	6.60	7,415.8	3,754.7	1,251.6	3,957.7	2.32	-2.12	-7.65	
8,672.0	5.00	6.90	7,502.3	3,763.1	1,252.6	3,966.1	1.38	-1.38	0.34	
8,757.0	3.90	354.60	7,587.1	3,769.6	1,252.8	3,972.3	1.71	-1.29	-14.47	
8,843.0	3.40	343.60	7,672.9	3,775.0	1,251.8	3,977.1	1.00	-0.58	-12.79	
8,927.0	2.90	341.30	7,756.8	3,779.4	1,250.4	3,980.9	0.61	-0.60	-2.74	
9,014.0	2.20	341.30	7,843.7	3,783.1	1,249.2	3,984.0	0.80	-0.80	0.00	
9,099.0	1.30	352.20	7,928.7	3,785.6	1,248.5	3,986.1	1.12	-1.06	12.82	
9,186.0	1.10	359.90	8,015.6	3,787.4	1,248.4	3,987.8	0.29	-0.23	8.85	
9,271.0	0.80	342.30	8,100.6	3,788.8	1,248.2	3,989.1	0.49	-0.35	-20.71	
9,358.0	0.70	339.00	8,187.6	3,789.8	1,247.8	3,990.0	0.13	-0.11	-3.79	
9,443.0	0.70	341.80	8,272.6	3,790.8	1,247.5	3,990.8	0.04	0.00	3.29	
9,530.0	0.40	278.00	8,359.6	3,791.4	1,247.0	3,991.2	0.73	-0.34	-73.33	
9,615.0	0.80	201.90	8,444.6	3,790.8	1,246.5	3,990.5	0.95	0.47	-89.53	
9,700.0	1.20	191.20	8,529.6	3,789.4	1,246.1	3,989.1	0.52	0.47	-12.59	
9,786.0	2.20	187.10	8,615.6	3,786.9	1,245.7	3,986.5	1.17	1.16	-4.77	
9,872.0	2.80	185.90	8,701.5	3,783.2	1,245.3	3,982.9	0.70	0.70	-1.40	
9,958.0	4.00	180.80	8,787.3	3,778.1	1,245.1	3,978.0	1.44	1.40	-5.93	
10,021.0	4.30	183.30	8,850.2	3,773.5	1,244.9	3,973.6	0.56	0.48	3.97	
10,090.0	4.30	183.30	8,919.0	3,768.4	1,244.6	3,968.6	0.00	0.00	0.00	
11,613.1	4.30	183.30	10,437.8	3,750.0	1,221.0	3,858.2	0.00	0.00	0.00	
BHL 773'FNL & 881'FEL										
PROJECTED TO TD										
11,700.0	4.30	183.30	10,524.4	3,750.0	1,221.0	3,851.9	0.00	0.00	0.00	

Design Targets										
Target Name	Dip Angle (°)	Dip Dir. (°)	TVD (ft)	+N/-S (ft)	+E/-W (ft)	Northing (usft)	Easting (usft)	Latitude		Longitude
- hit/miss target										
- Shape										
SHL 911' FSL & 2102' FEL	0.00	0.00	0.0	0.0	0.0	1,435,377.14	3,242,372.33	40.525240		-104.628130
- survey hits target center										
- Point										
BHL 773'FNL & 881'FEL	0.00	0.00	11,613.0	3,750.0	1,221.0	1,439,152.45	3,243,572.16	40.535570		-104.623680
- survey hits target center by 0.00ft at 11613.1ft MD (10437.8 TVD, 3750.0 N, 1221.0 E)										
- Circle (radius 50.0)										

Checked By: _____ Approved By: _____ Date: _____