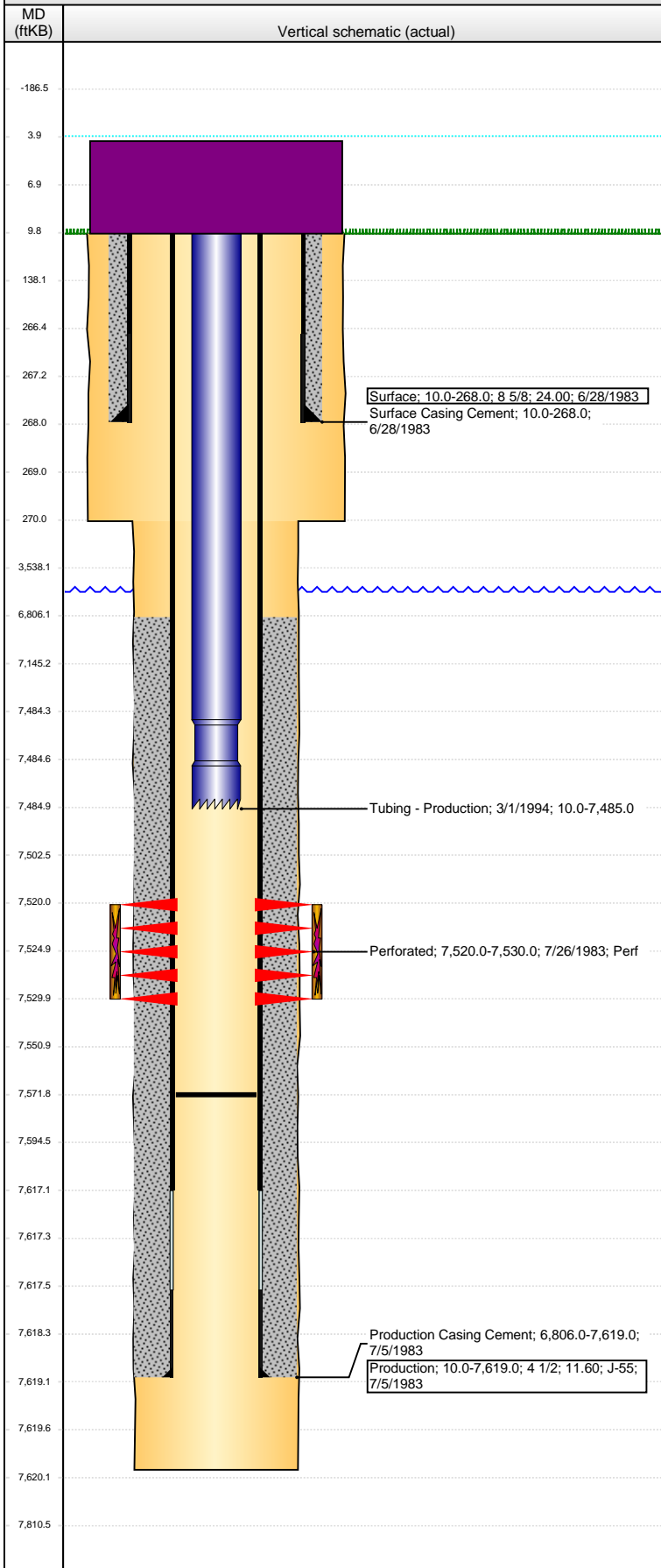


**Well Name: BLEHM 07**

VERTICAL - ORIGINAL HOLE, 3/7/2016 3:34:24 PM



Well Header			
API	Business Unit	District	Well Config
05-123-11217	DJ BASIN	15	VERTICAL
Original KB Elevation (ft)	KB - GL / MSL (ftKB)	Spud Date	P & A Date
5,036	10.00	6/28/1983	
Comment			
Directions To Well			
Congressional Location			
Quarter 1	Quarter 2	Quarter 3	Quarter 4
		SW	SE
Section	Township	Twnshp N...	Range
24	5	N	67
Rng E/W Dir			
W			
Bottom Hole Location			
North-South Distance (ft)	From N or S Line	East-West Distance (ft)	From E or W Line
Plug Back Total Depths			
Date	Depth (ftKB)	Method	Com
7/13/1983	7,572.0	CASED HOLE LOG	DEPTH LOGGER
Wellbore Sections			
Section Des	Size (in)	Act Top, MD (ftKB)	Act Btm, MD (ftKB)
SURFACE	12 1/4	10.0	270.0
PRODUCTION	7 7/8	270.0	7,620.0
Zone Statuses			
Zone Name	Status Date	Status	Fluid Type
CODELL	5/30/1984	PR	
Job		Prod Method	
DRILLING/CO...			
Casing Strings			
Surface, 268.0ftKB			
Casing Description	Run Date	OD (in)	Wt/Len (l...
Surface	6/28/1983	8 5/8	24.00
Grade	Top, MD (ft...)	MD (ftKB)	
	10.0	268.0	
Production, 7,619.0ftKB			
Casing Description	Run Date	OD (in)	Wt/Len (l...
Production	7/5/1983	4 1/2	11.60
Grade	Top, MD (ft...)	MD (ftKB)	
J-55	10.0	7,619.0	
Cement			
Description	Top Depth (ftKB)	Bottom Depth (ftKB)	
Surface Casing Cement	10.0	268.0	
Description	Top Depth (ftKB)	Bottom Depth (ftKB)	
Production Casing Cement	6,806.0	7,619.0	
Tubing Strings			
Tubing Description	Run Date	String...	ID (in)
Tubing - Production	3/1/1994	2 3/8	1.995
Wt (lb/ft)	Grade	Len (ft)	Set De...
4.70	J-55	7,475.00	
Tubing Components			
Item Des	OD (in)	Wt (lb/ft)	Grade
Tubing	2 3/8	4.70	J-55
Jts	Len (ft)	Btm (ftKB)	Btm (TVD) (ftKB)
238	7,474.30	7,484.3	
Notched collar	2 3/8	0.70	7,485.0
Perforation Data			
Zone	Bnch/St g	Entered Shot Total	Top (ftKB)
CODELL, ORIGINAL HOLE		12	7,520.00
Btm (ftKB)	Date		
7,530.00	7/26/1983		
Stimulations & Treatments			
Date	Zone	Primary Job Type	
9/17/1983	CODELL, ORIGINAL HOLE	DRILLING/COMPLETION - ORIGINAL	
Technical Result		Tech Result Details	Tech Result Note
Comment			
Other In Hole			
Run Date	Des	OD (in)	Top (ftKB)
Btm (ftKB)			
Logs			
Date	Type	Top, MD (ftKB)	Btm, MD (ftKB)
7/13/1983	CEMENT BOND	7,100.0	7,571.0