



V.D.L. C.C.L. GAMMA RAY  
CEMNET BOND LOG


Pioneer Energy Services

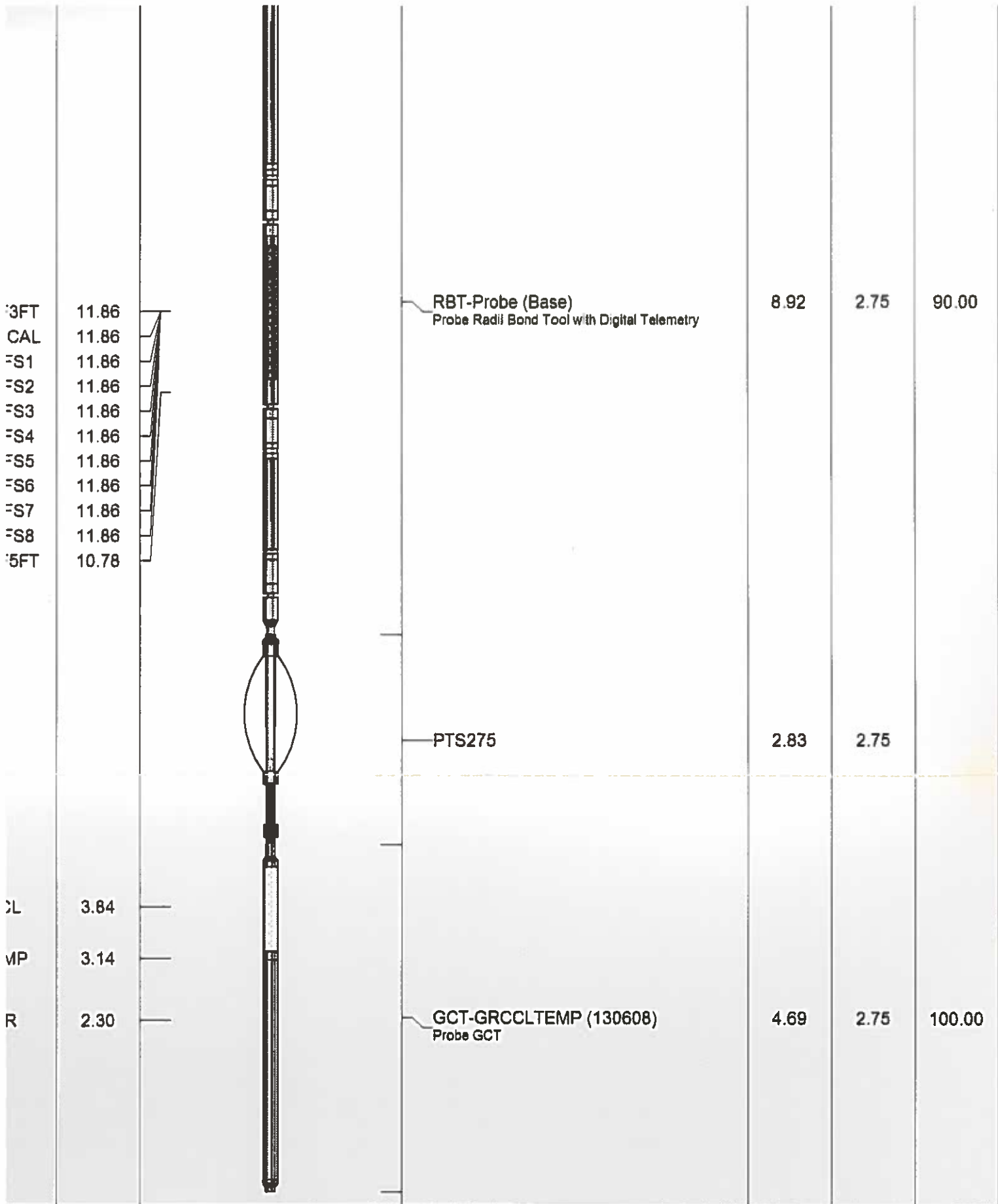
<<< Fold Here >>>

All interpretations are opinions based on inferences from electrical or other measurements and we cannot and do not guarantee the accuracy or correctness of any interpretation, and we shall not, except in the case of gross or willful negligence on our part, be liable or responsible for any loss, costs, damages, or expenses incurred or sustained by anyone resulting from any interpretation made by any of our officers, agents or employees. These interpretations are also subject to our general terms and conditions set out in our current Price Schedule.

## Comments

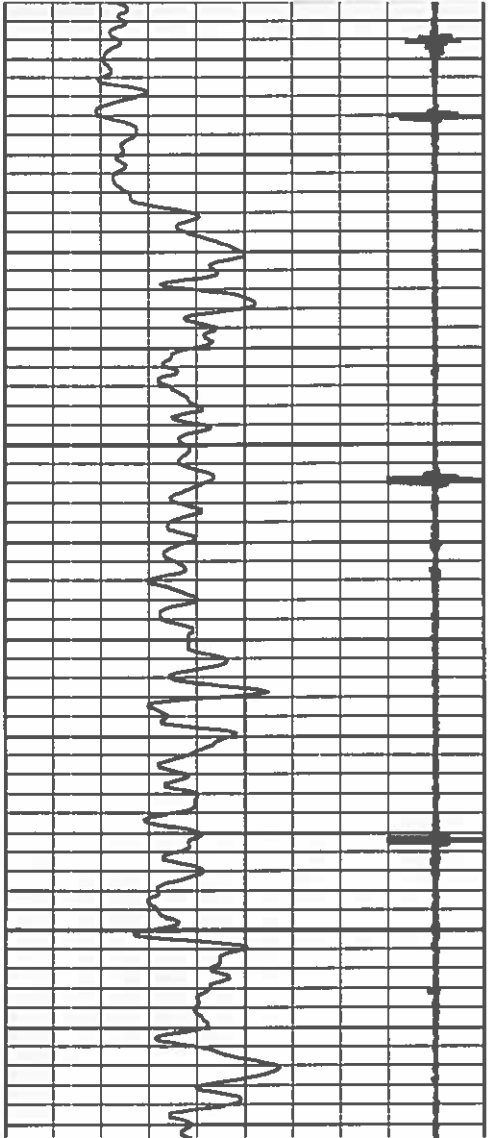
LOG MEASURED FROM GROUND LEVEL  
THANK YOU FOR USING PIONEER ENERGY SERVICES.  
SO# 2-205055

Sensor	Offset (ft)	Schematic	Description	Len (ft)	OD (in)	Wt (lb)
						



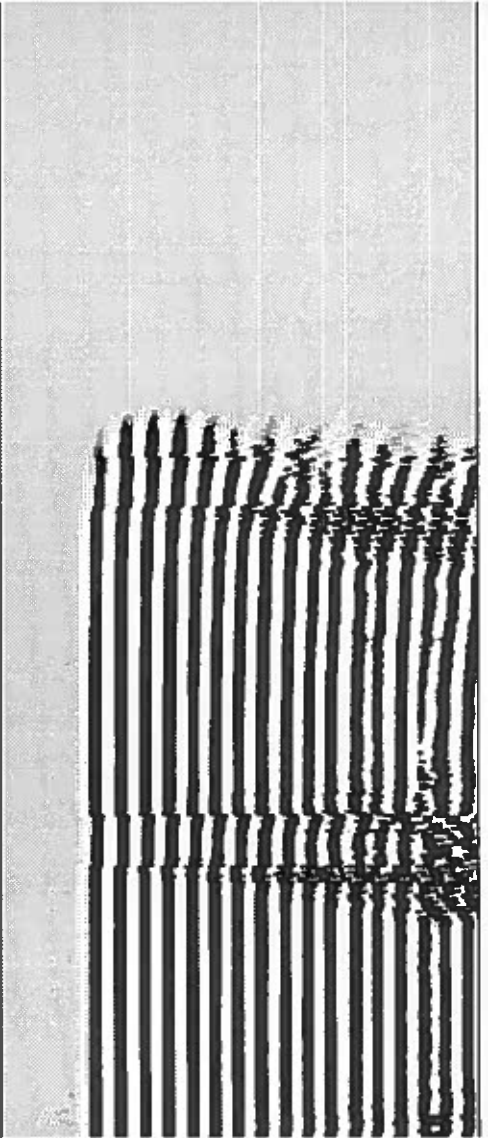
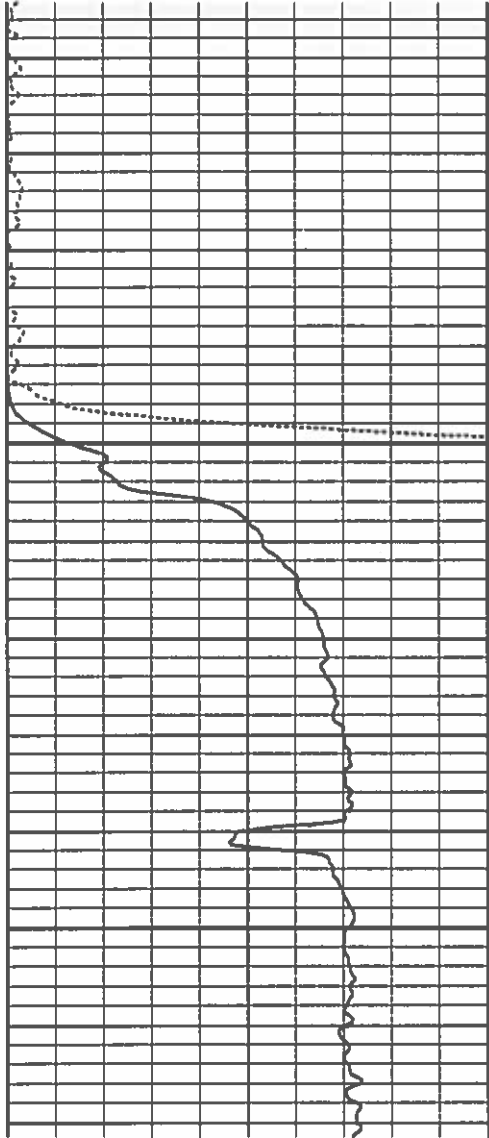
Dataset: government #6 cbl.db: field/well/run1/pass3  
 Total Length: 19.27 ft  
 Total Weight: 190.00 lb  
 O.D.: 2.75 in

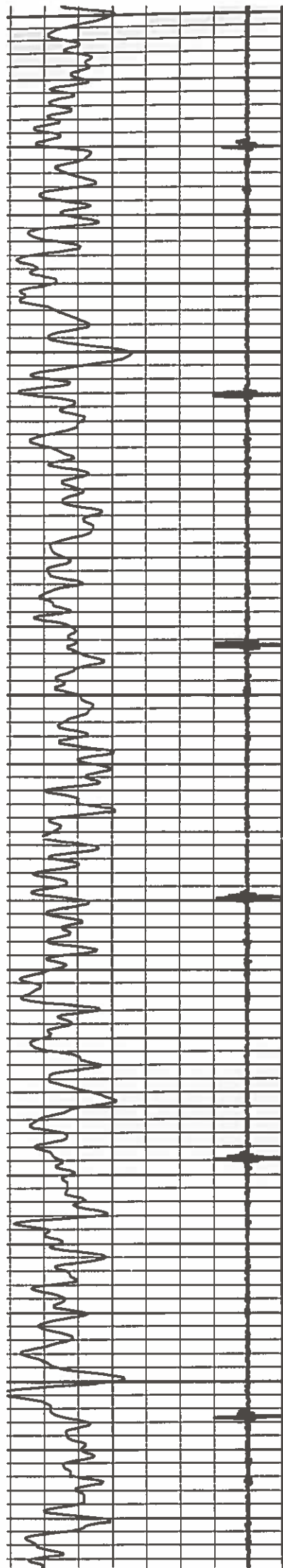
base File: government #6 cbl.db  
 set Pathname: pass3  
 entation Format: cbl\_drs  
 set Creation: Fri Jun 06 11:48:37 2014 by Log SCH 120126  
 ted by: Depth in Feet scaled 1:240



50

100





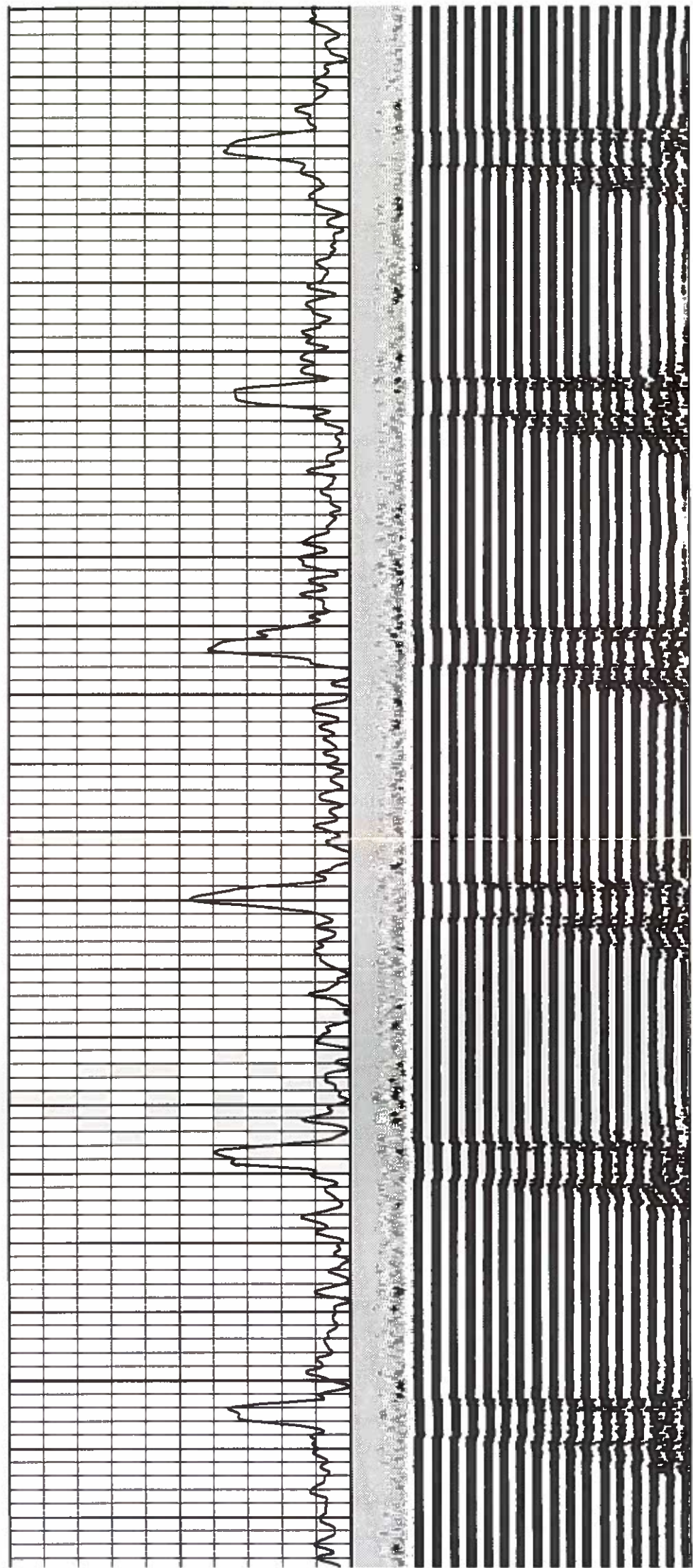
250

300

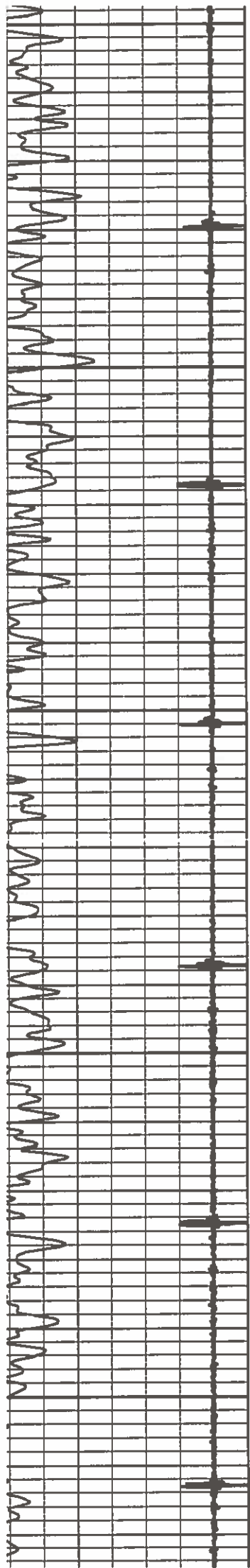
350

400

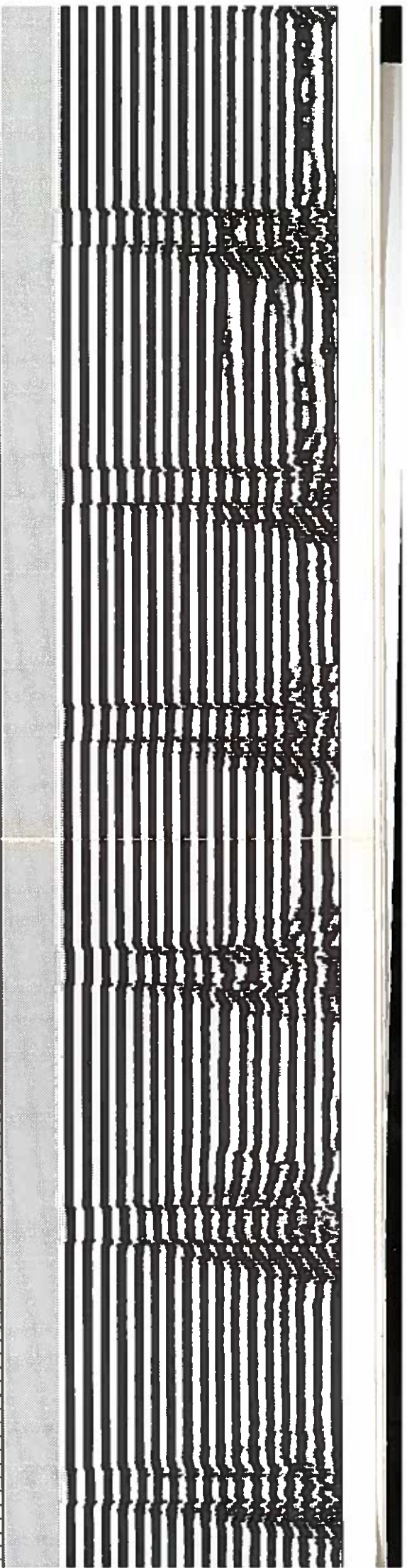
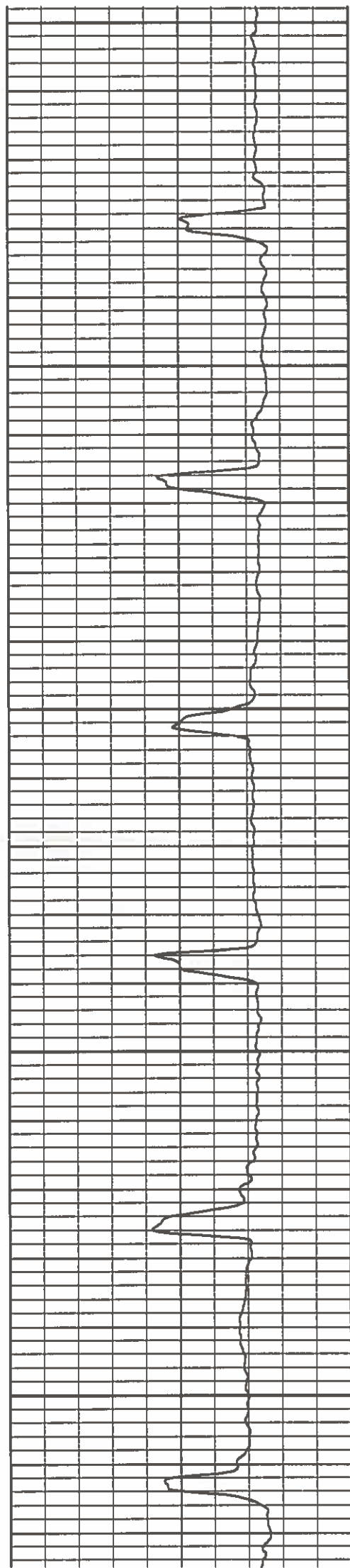
450

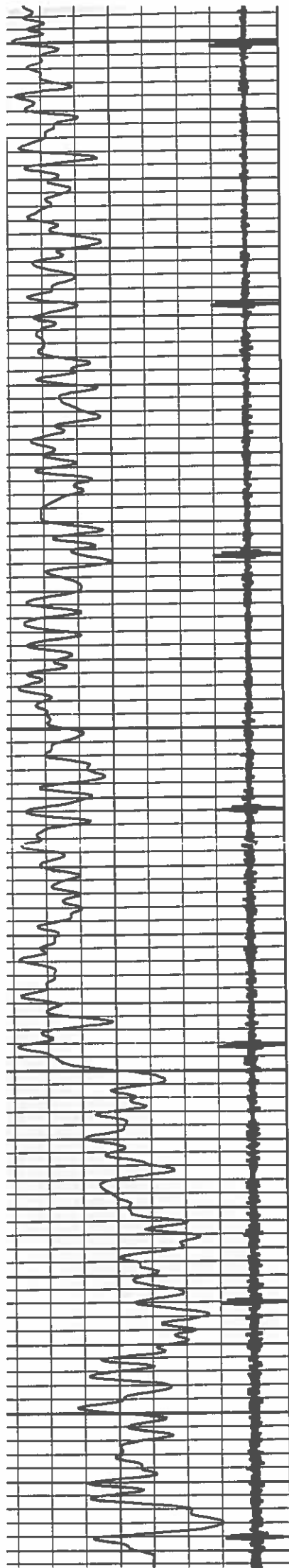






500  
550  
600  
650  
700





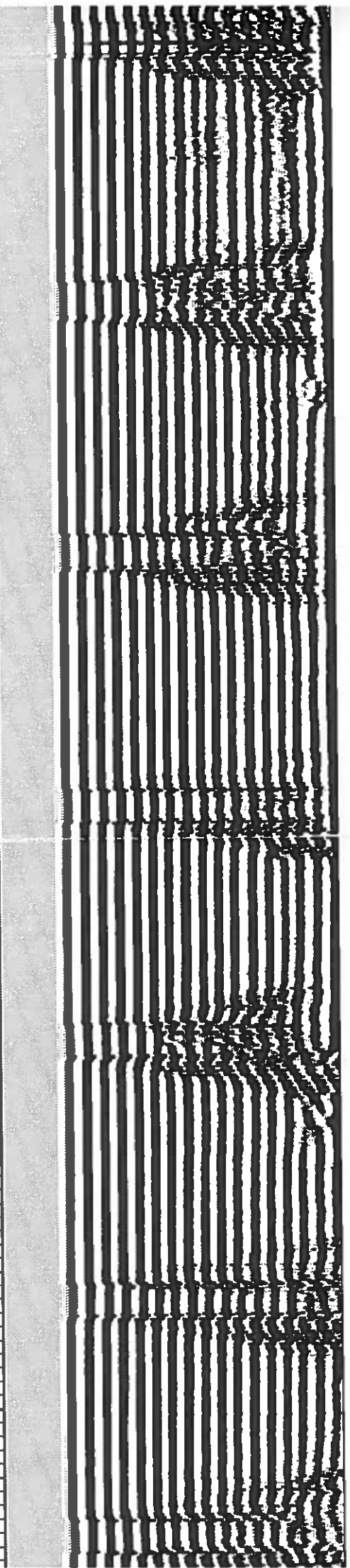
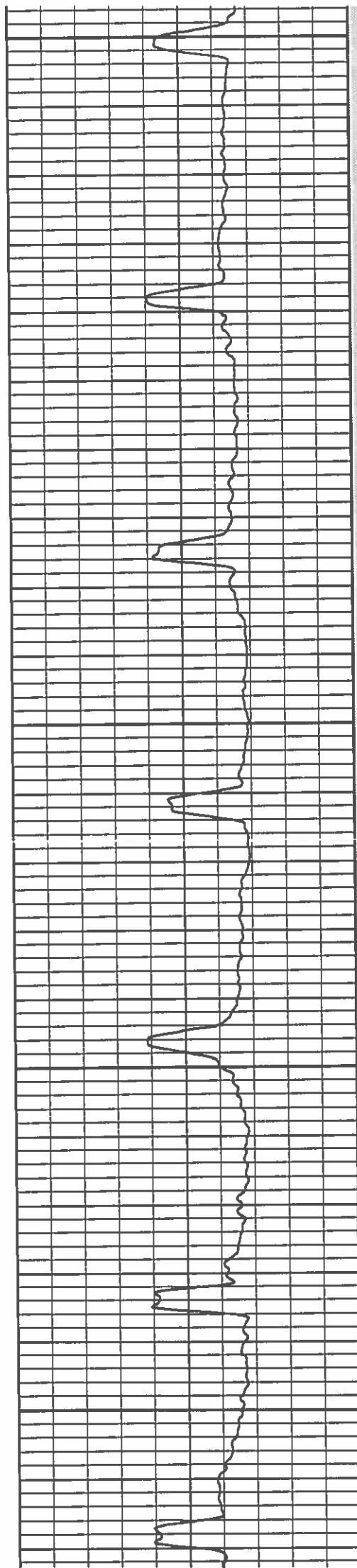
750

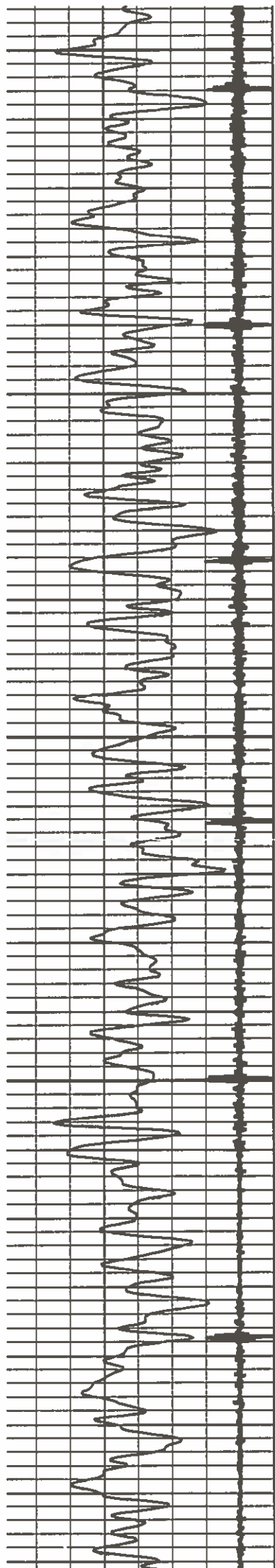
800

850

900

950





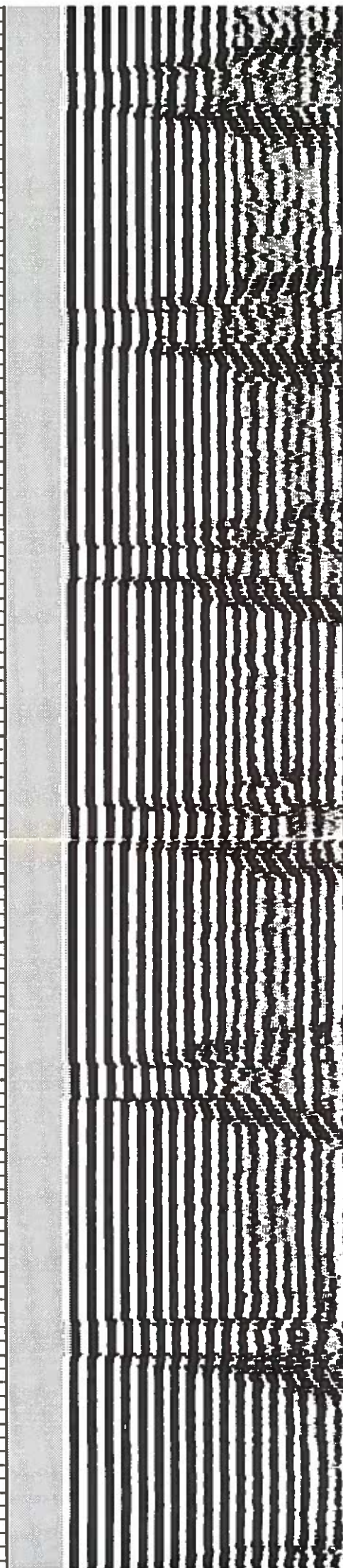
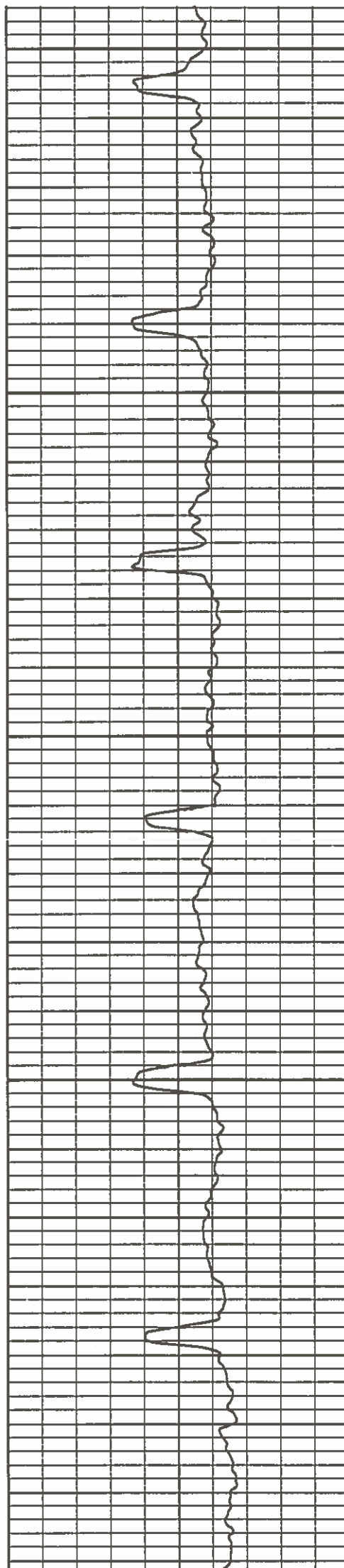
1000

1050

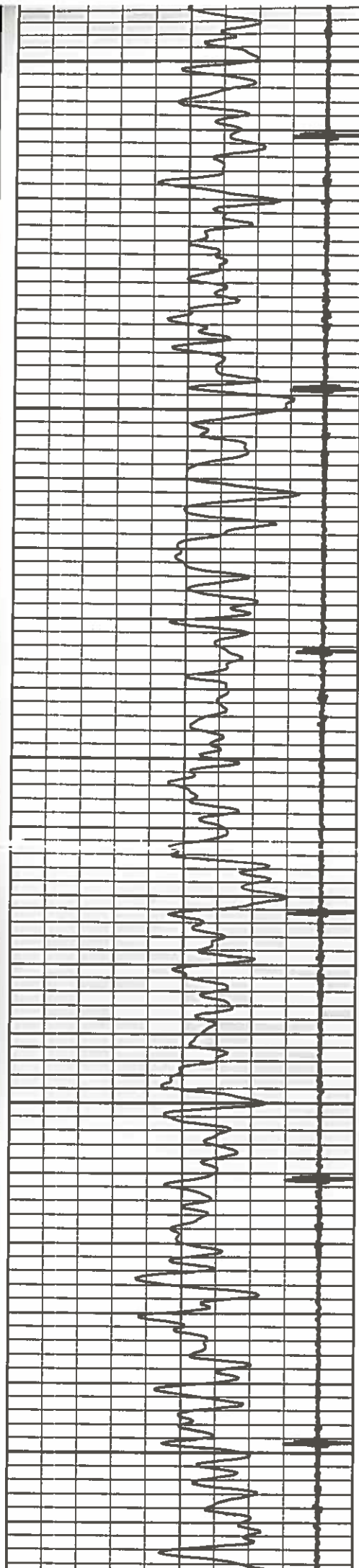
1100

1150

1200







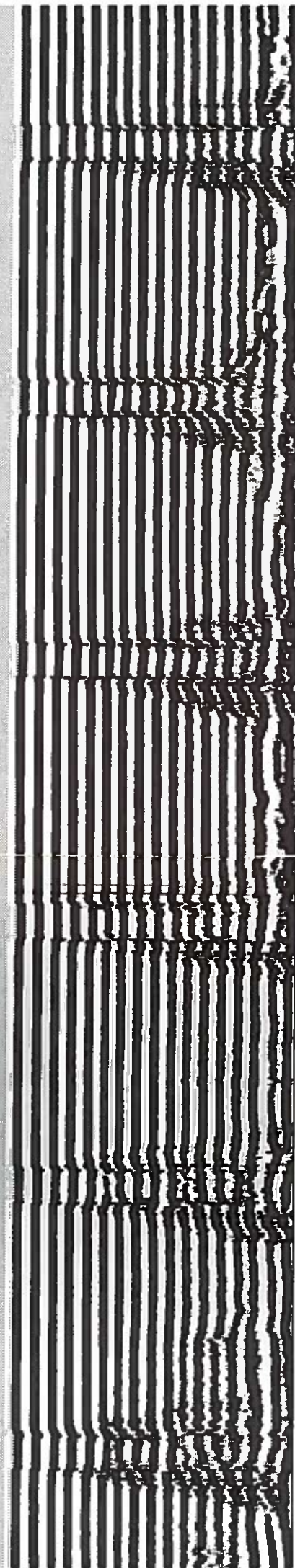
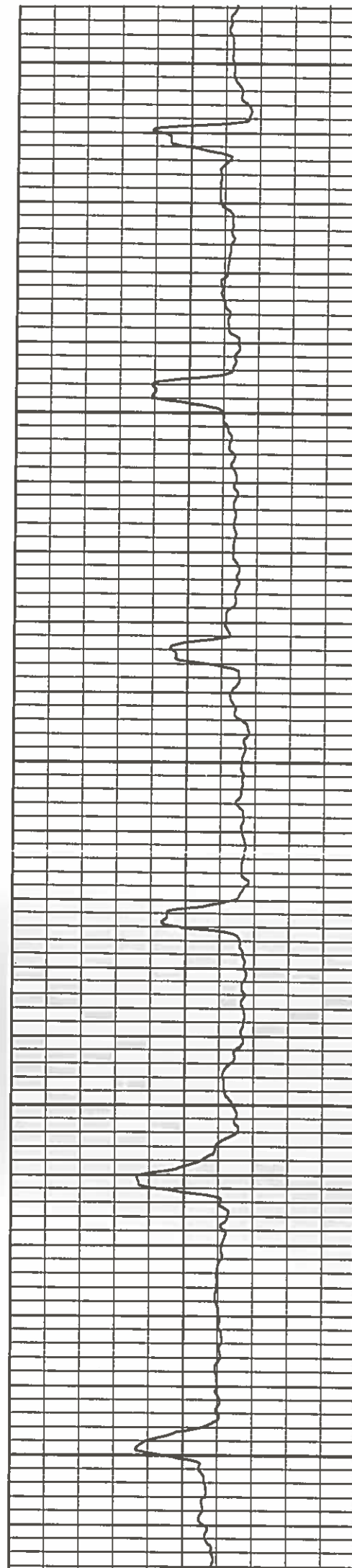
1250

1300

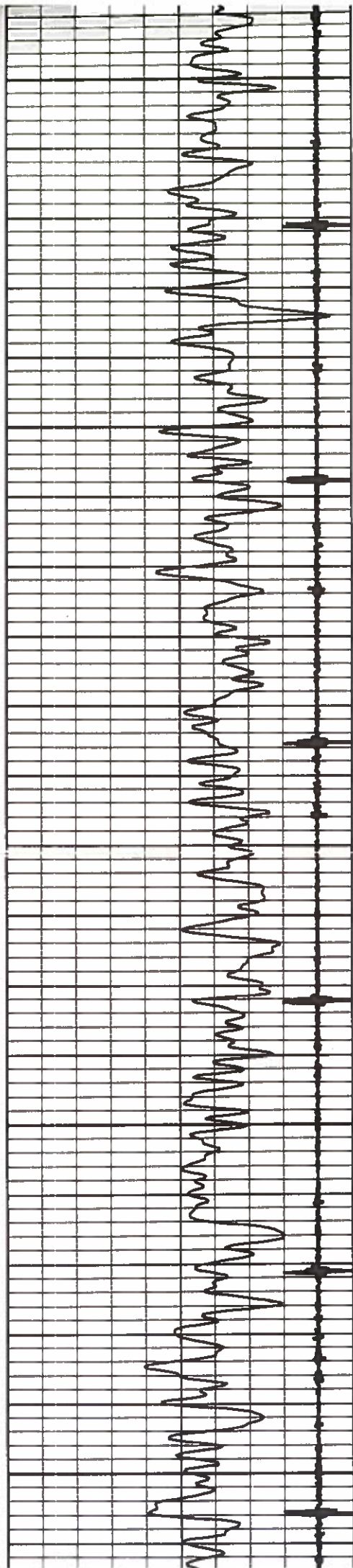
1350

1400

1450







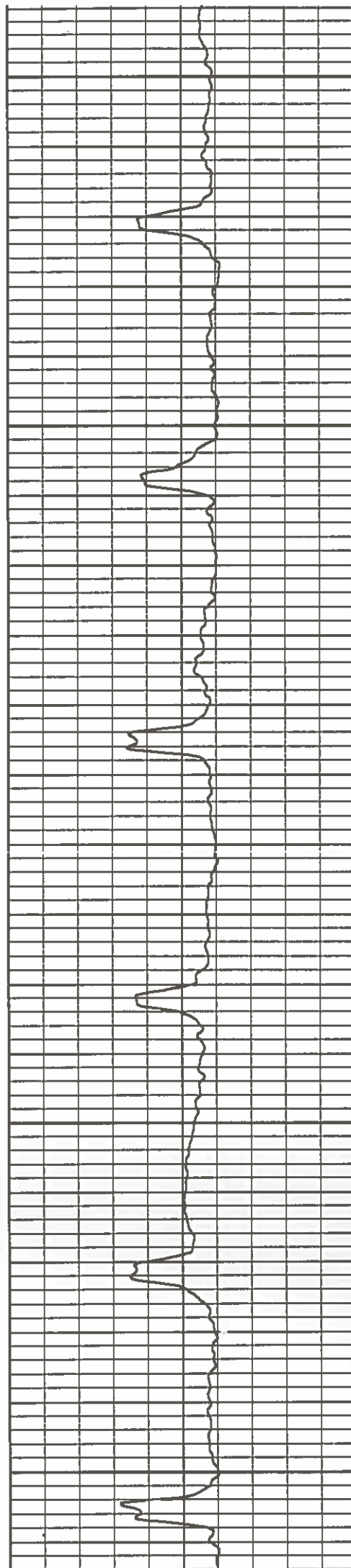
1500

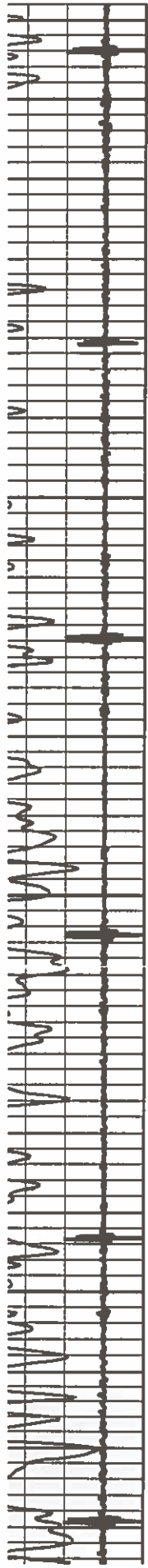
1550

1600

1650

1700



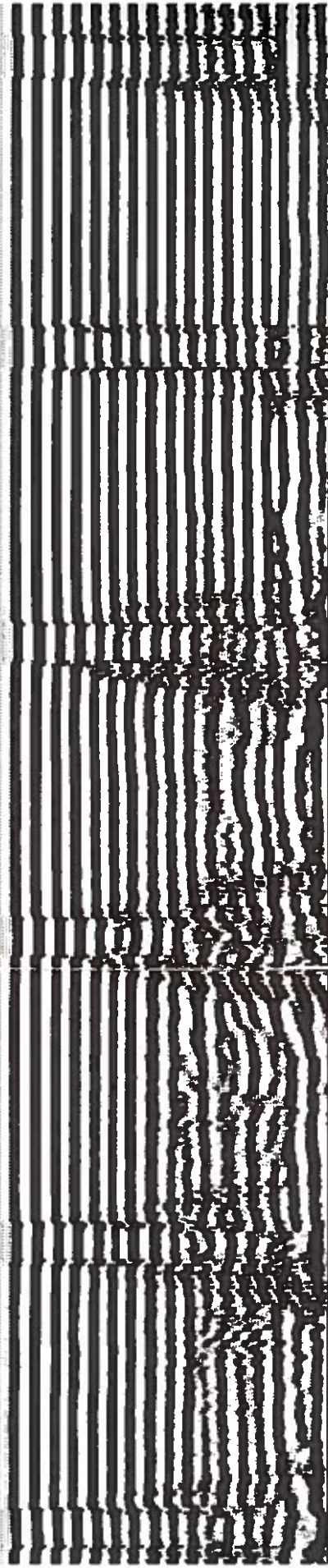
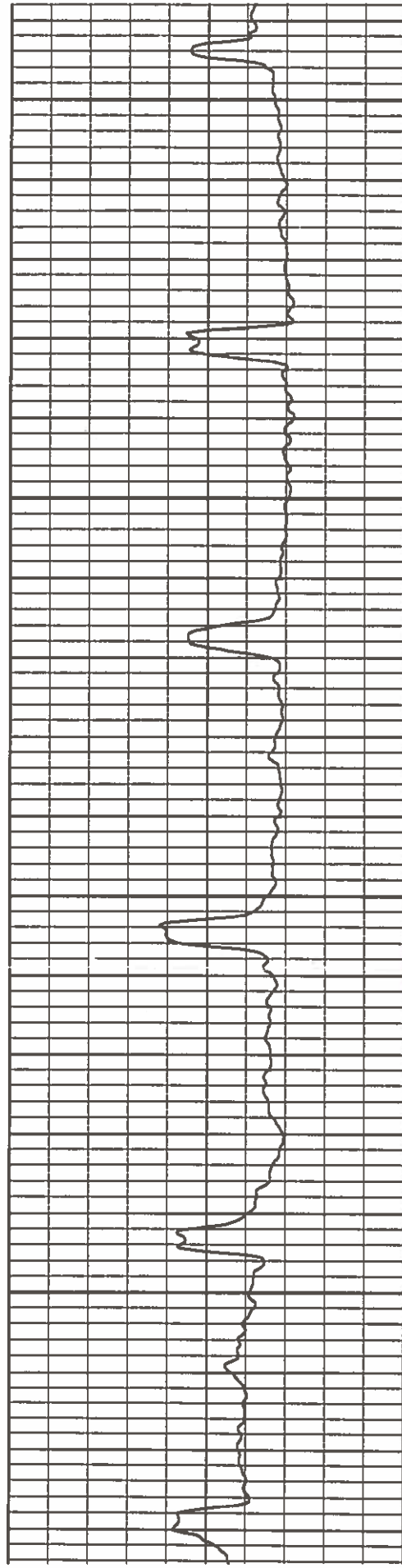


1750

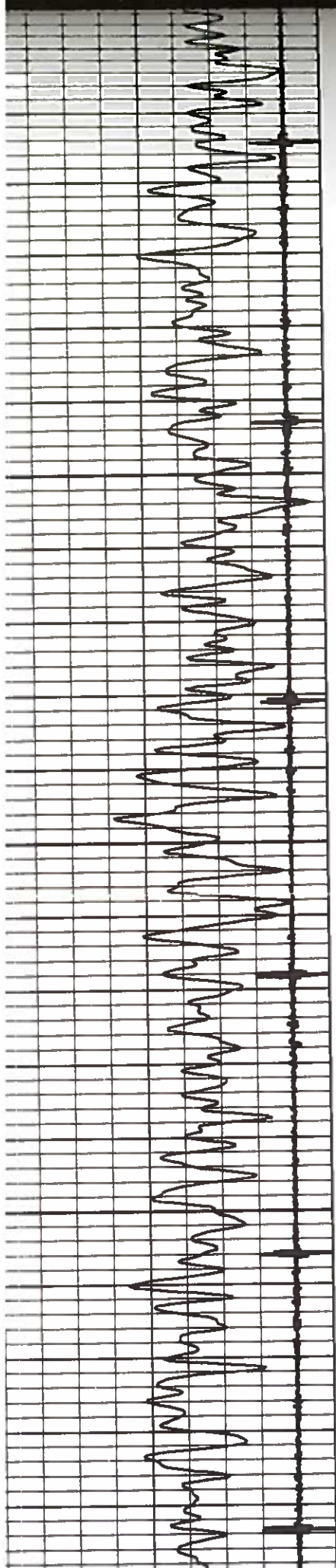
1800

1850

1900





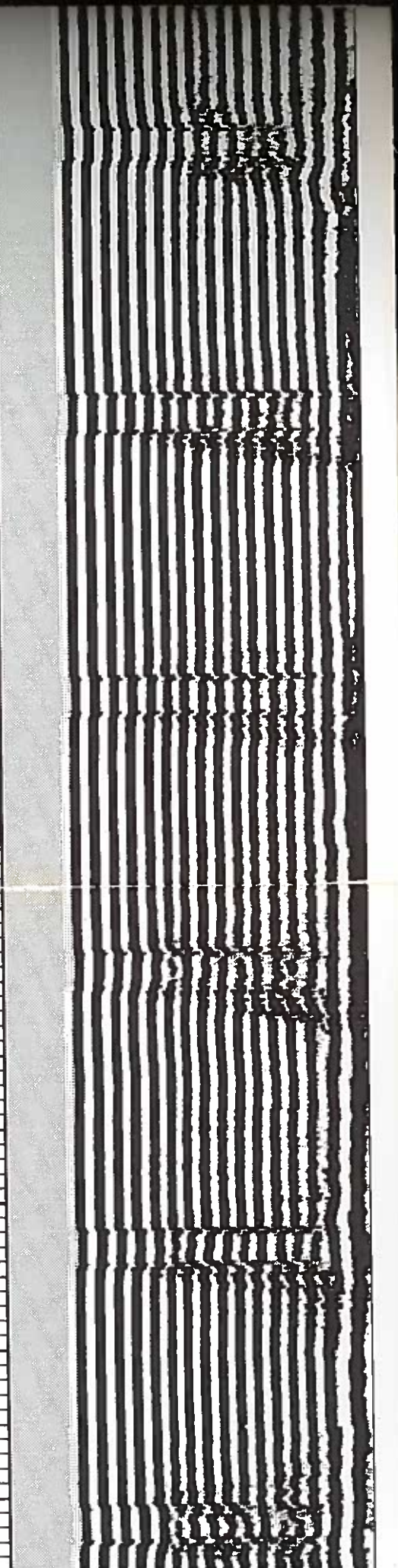
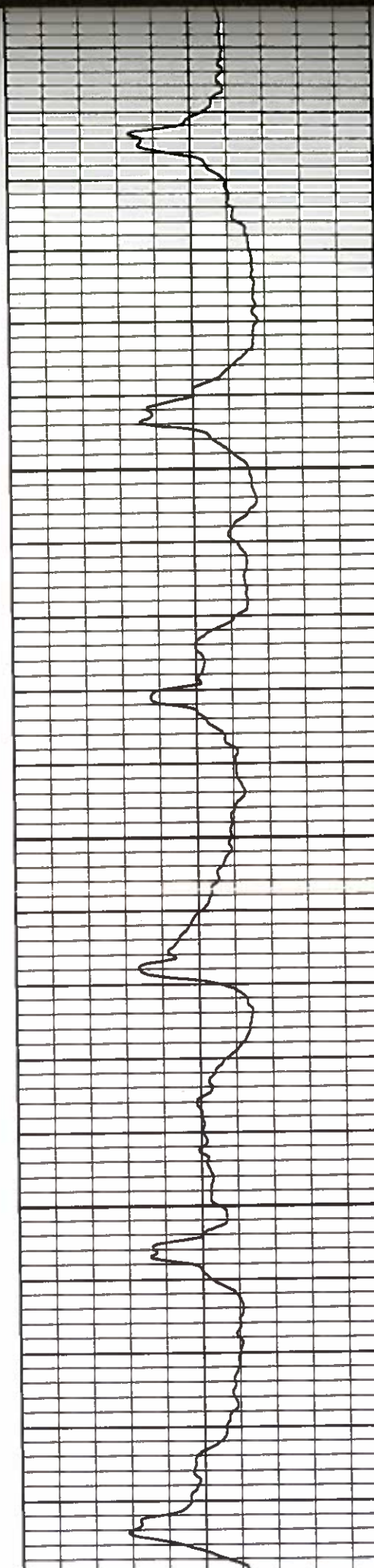


2000

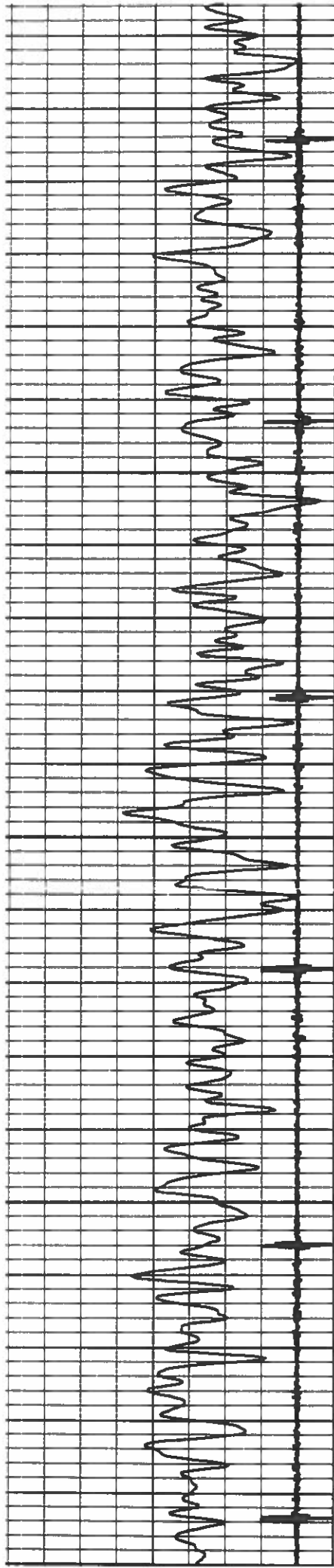
2050

2100

2150







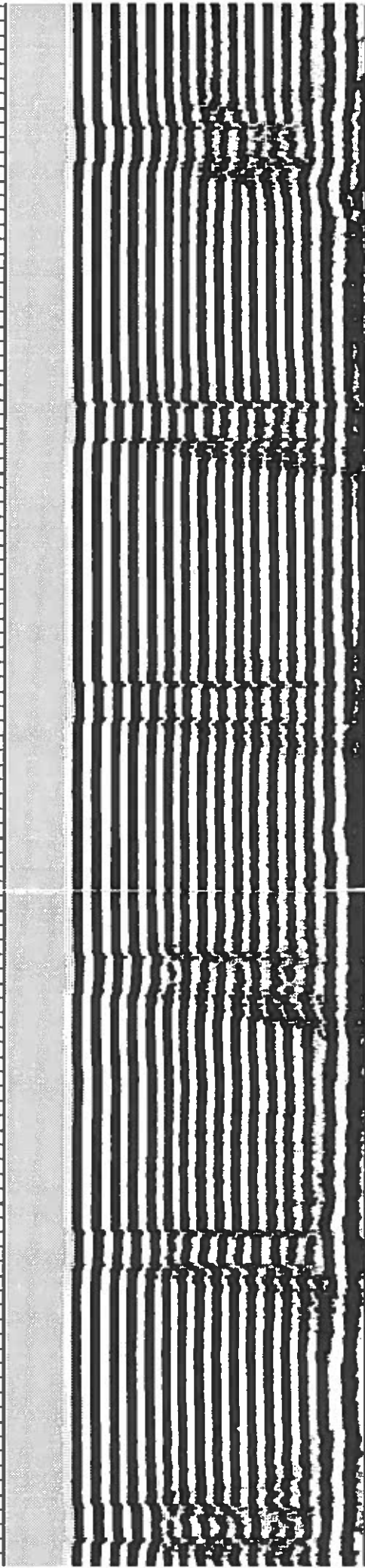
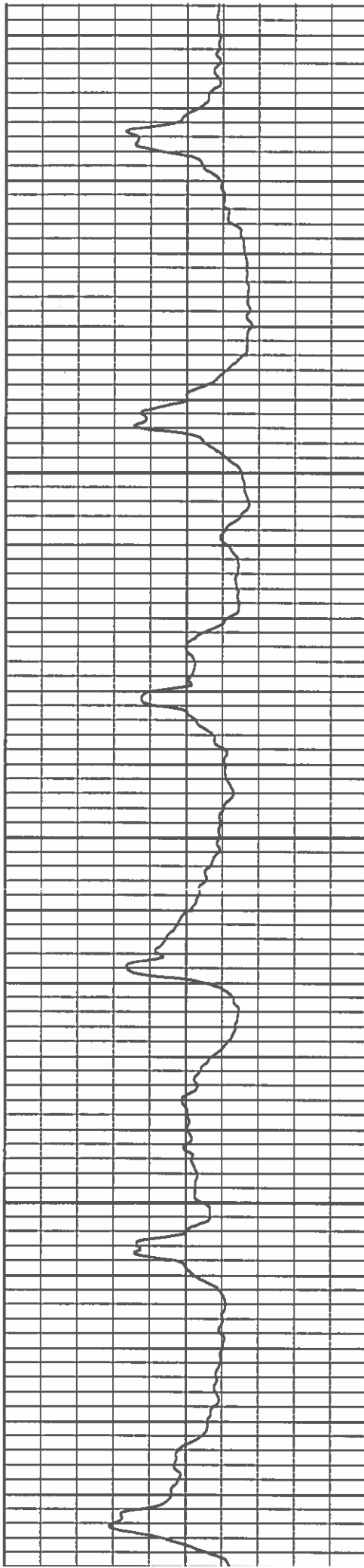
2000

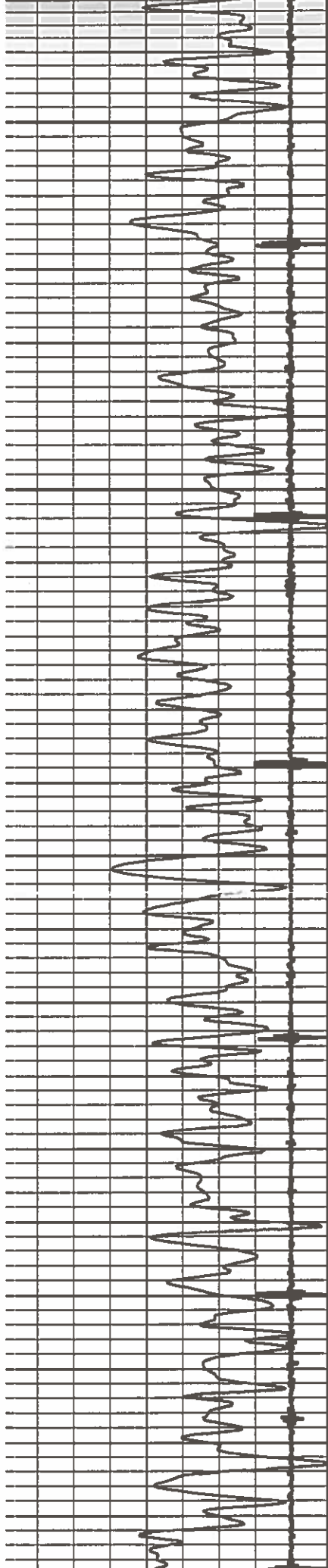
2050

2100

2150

2200



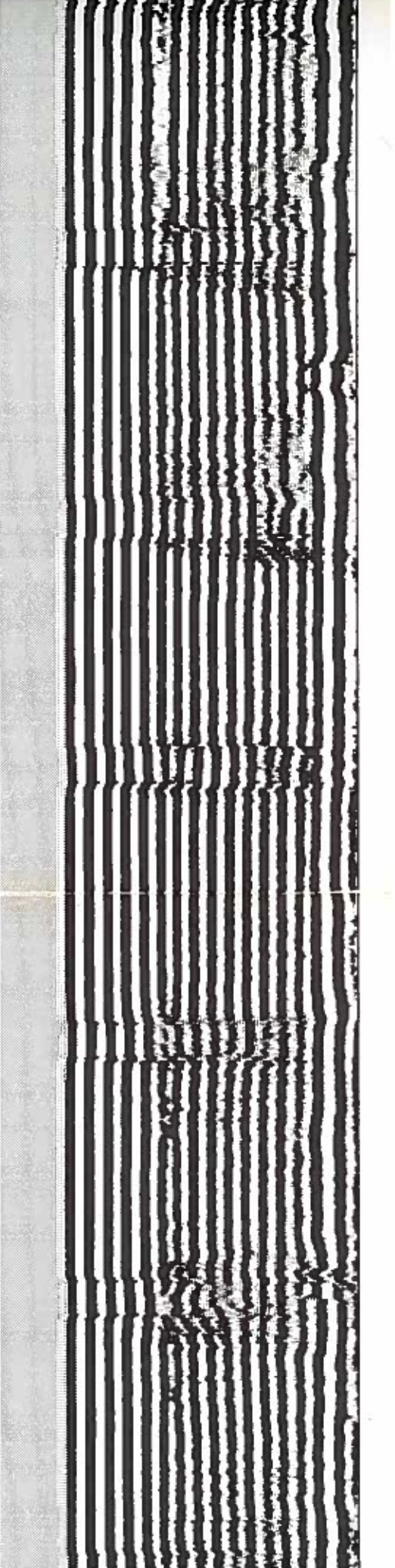
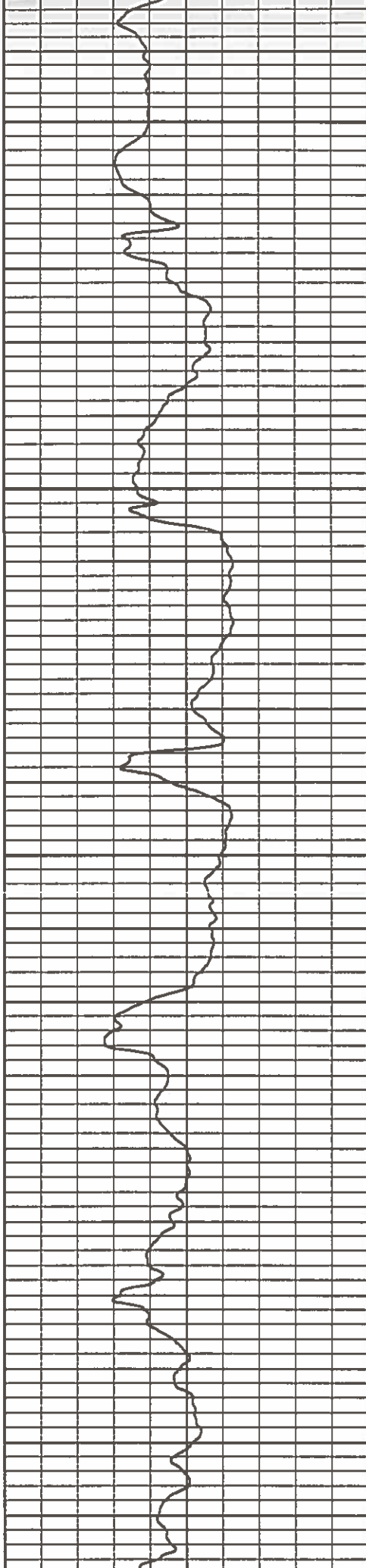


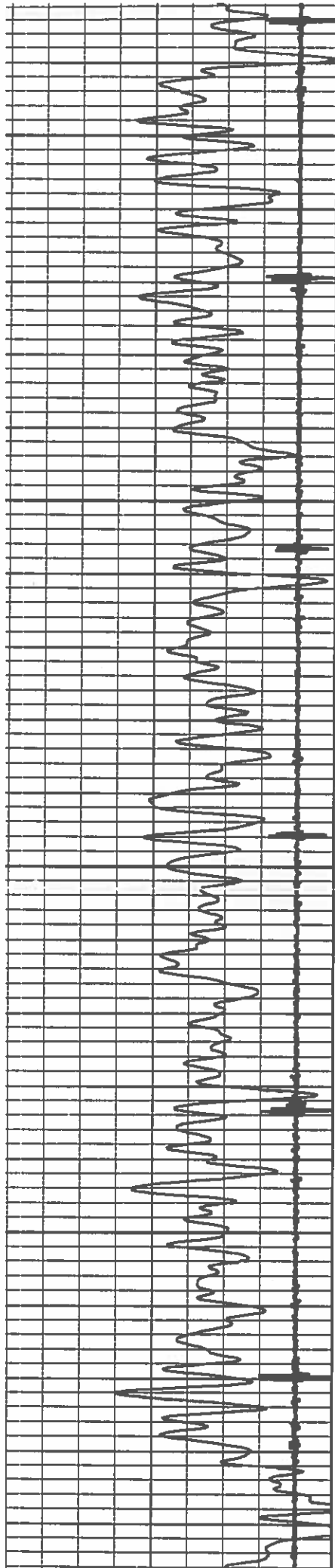
2250

2300

2350

2400



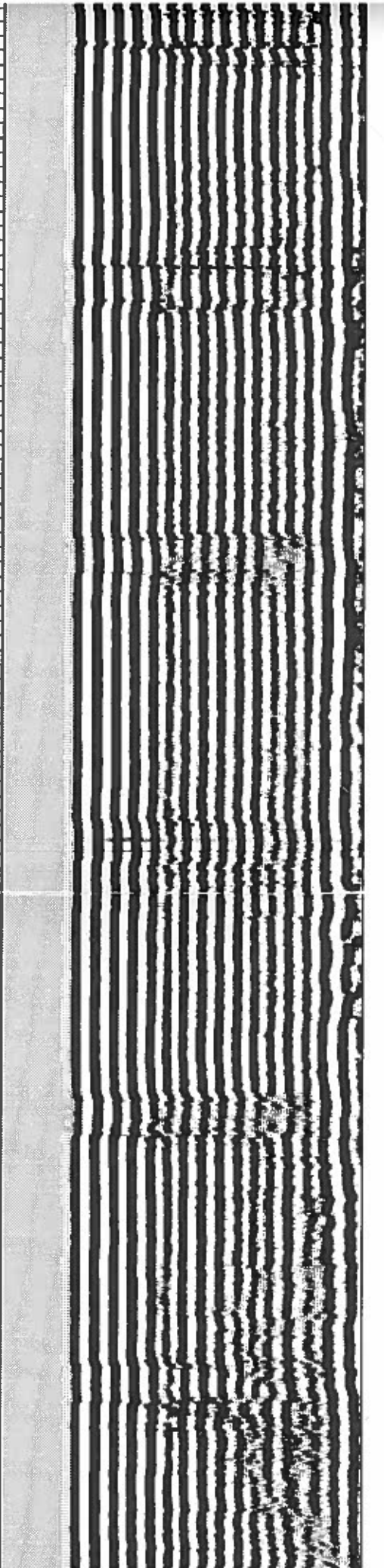
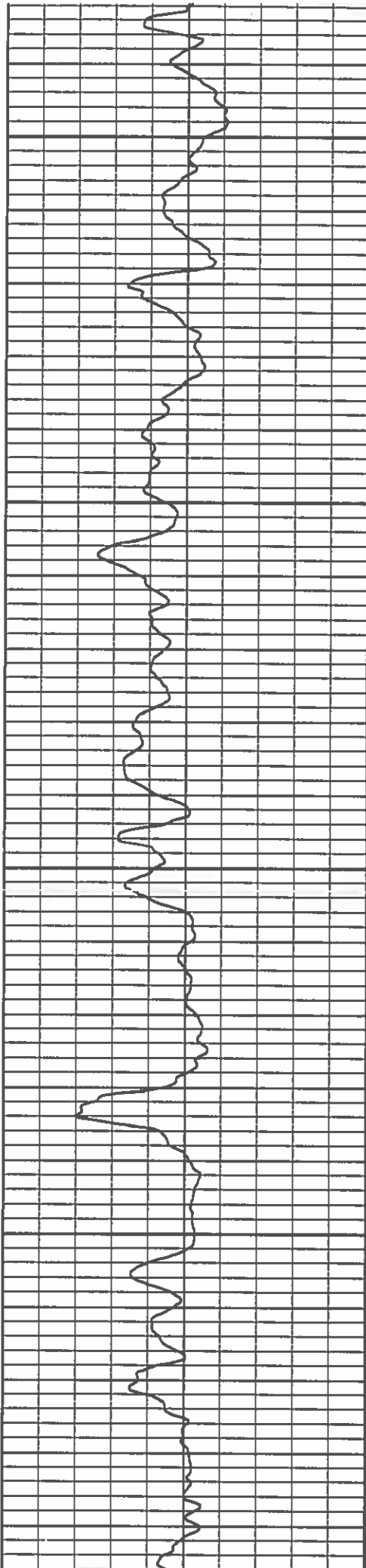


2500

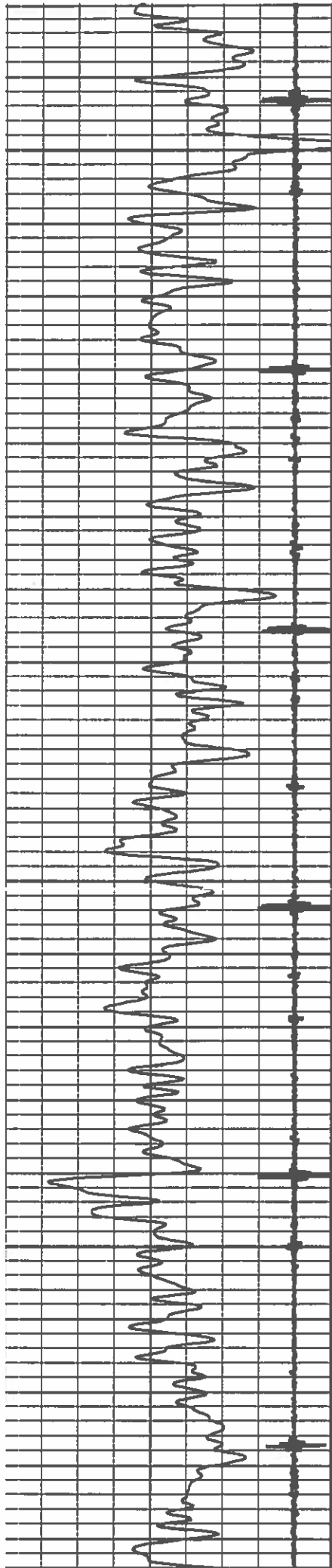
2550

2600

2650





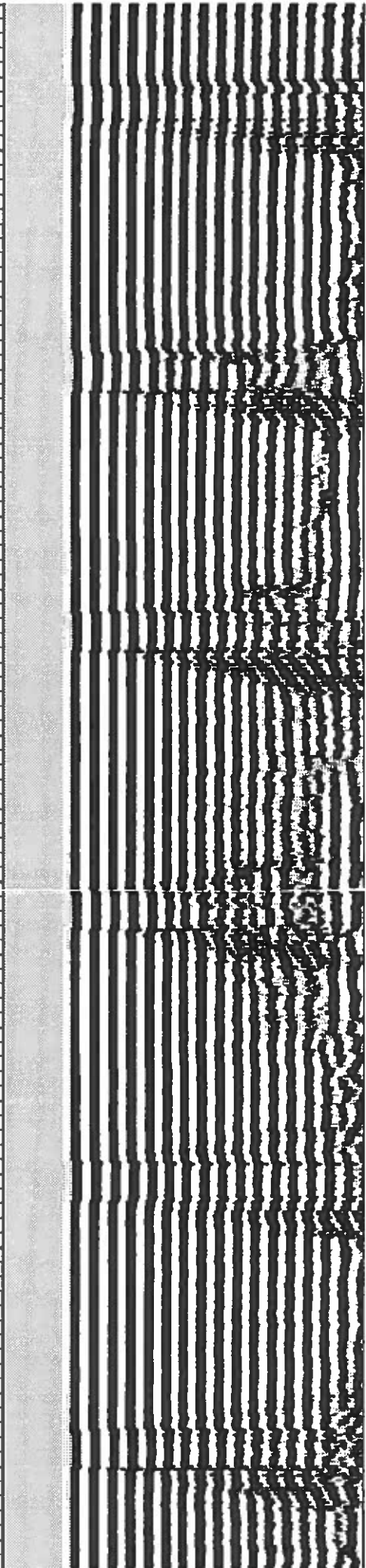
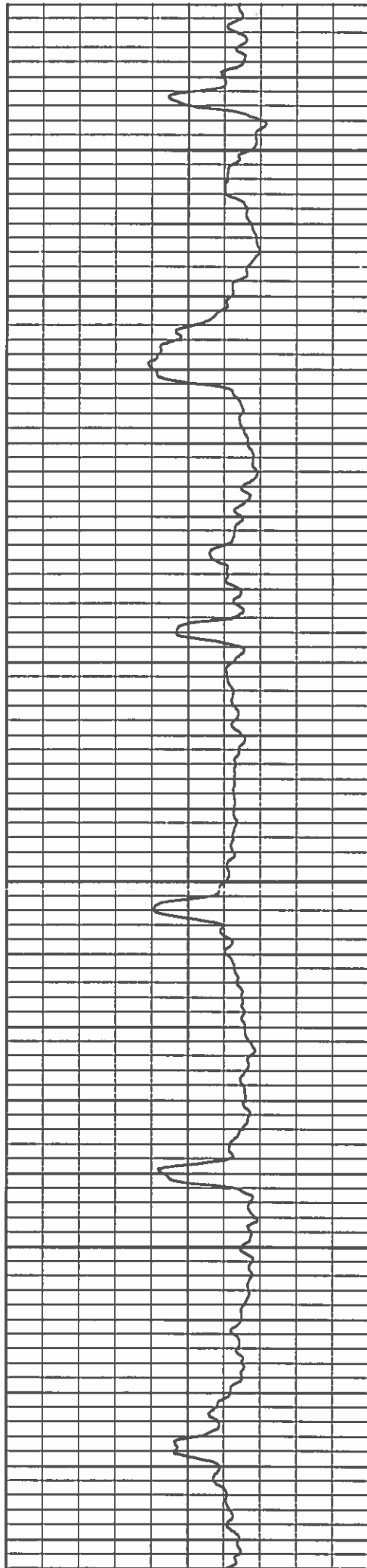


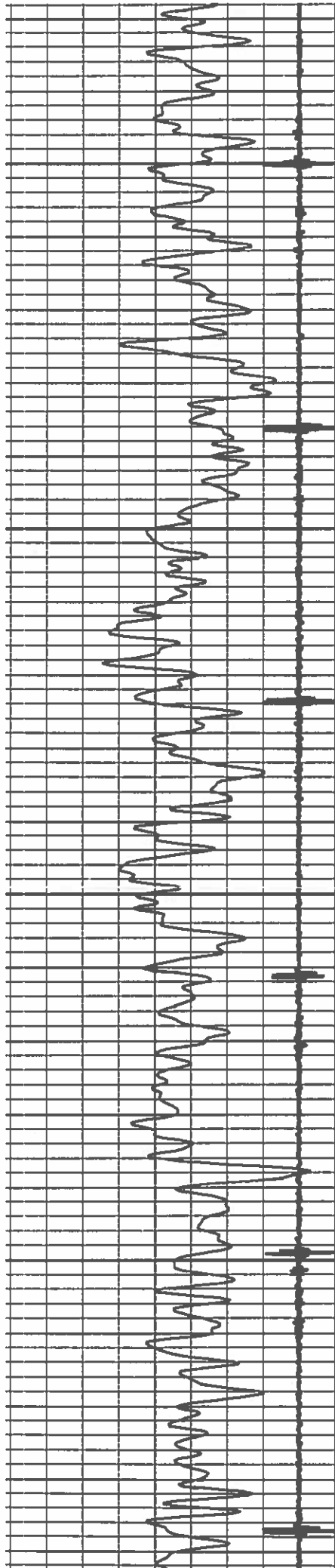
2750

2800

2850

2900



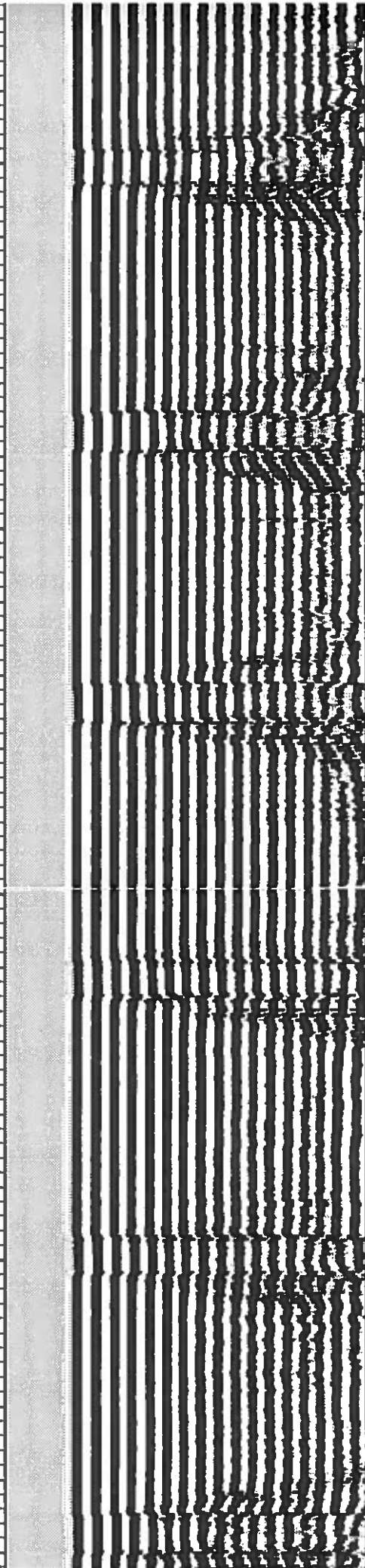
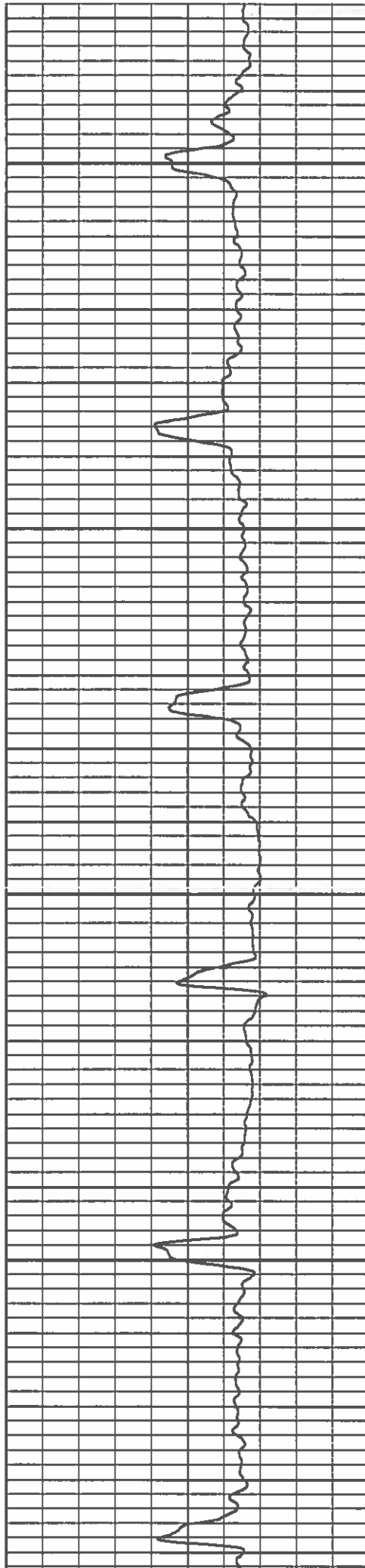


3000

3050

3100

3150



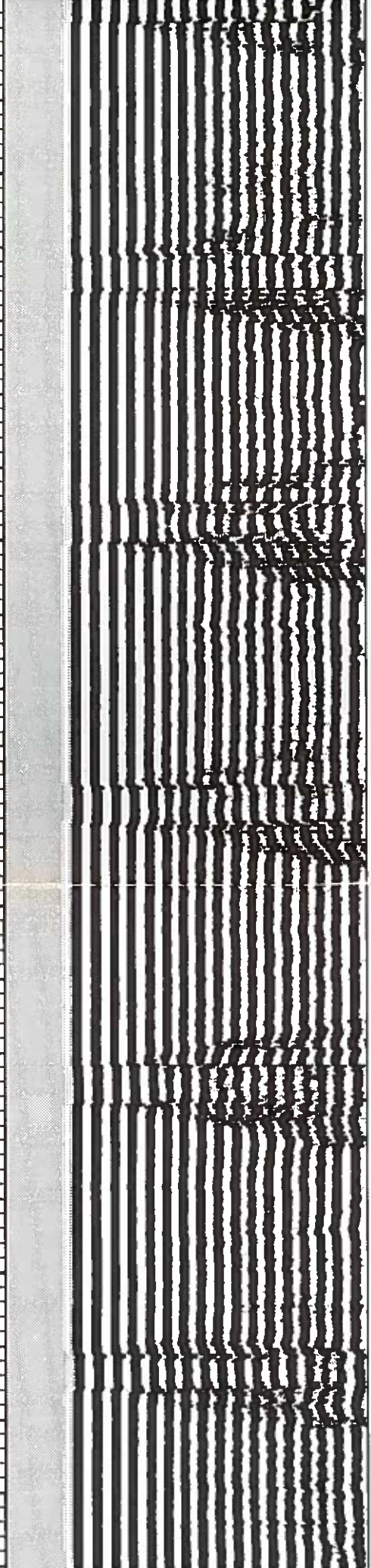
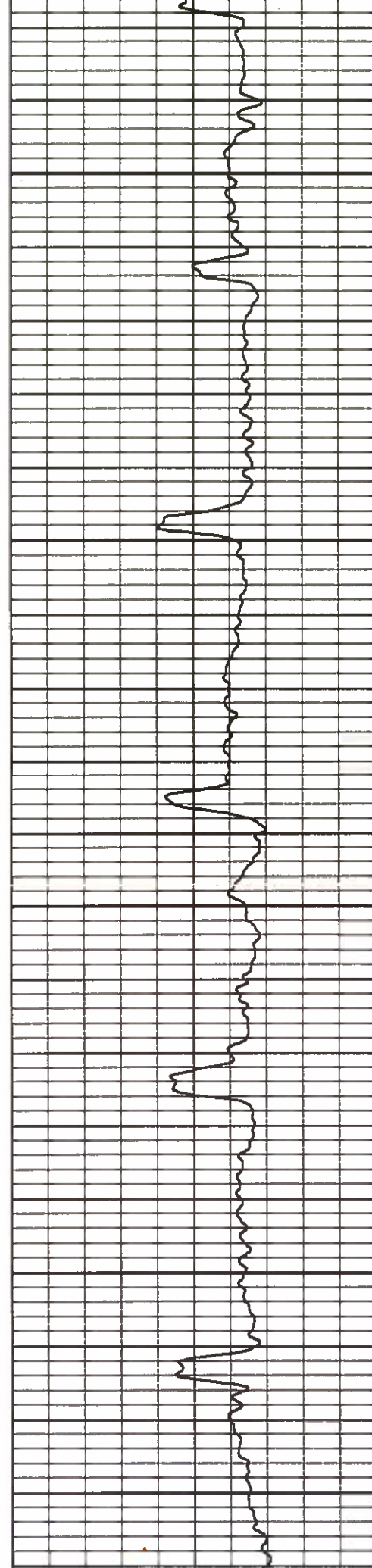


3250

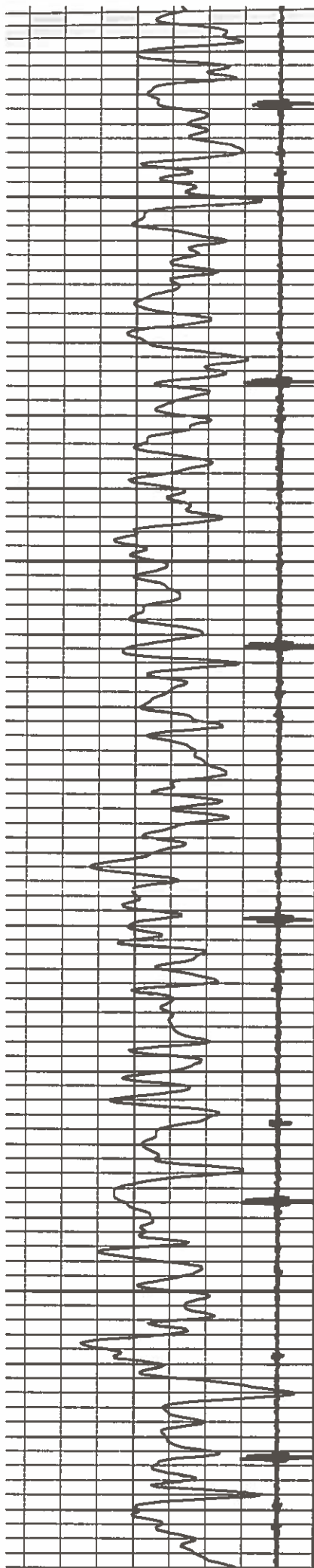
3300

3350

3400





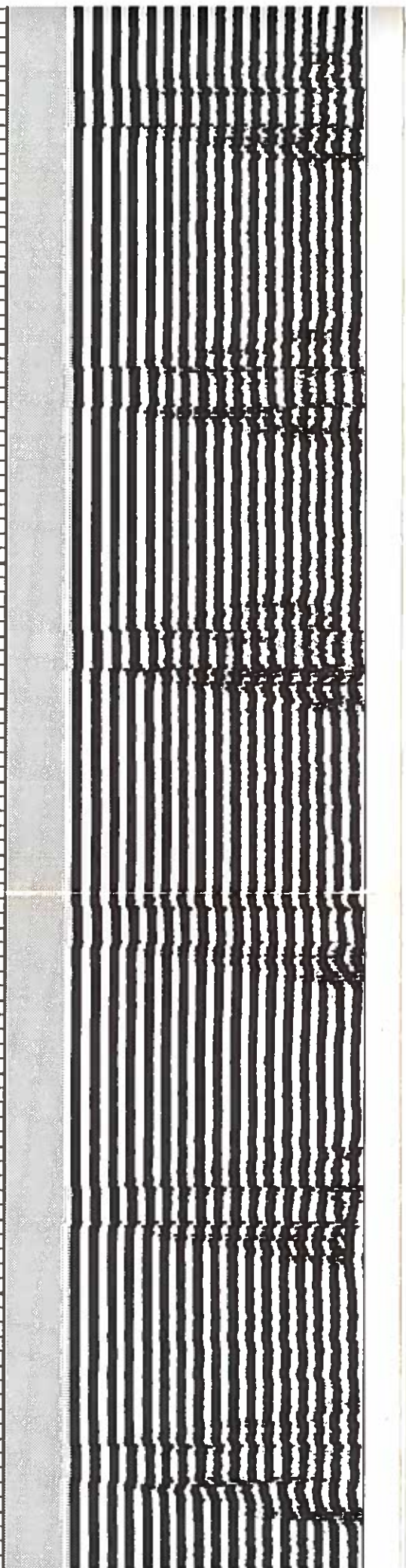
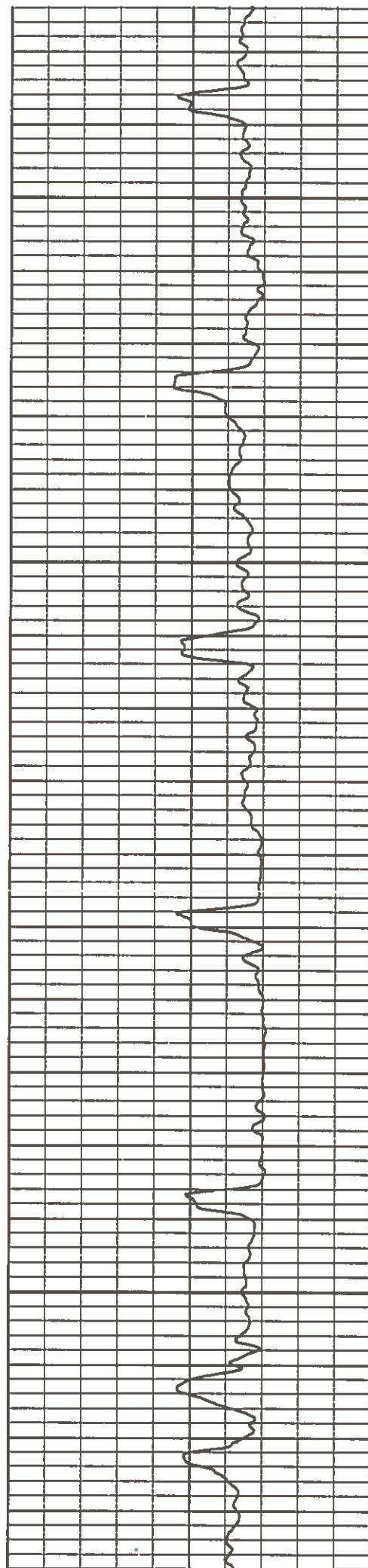


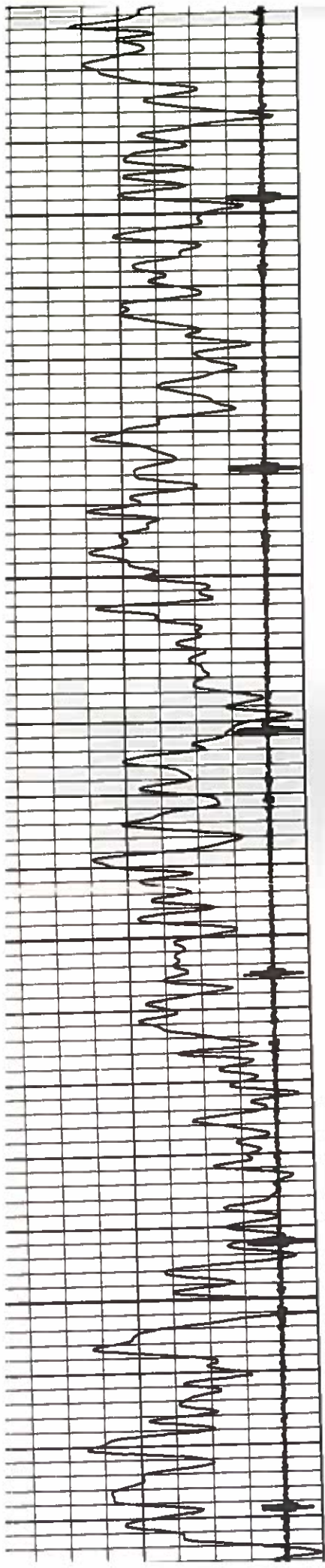
3500

3550

3600

3650



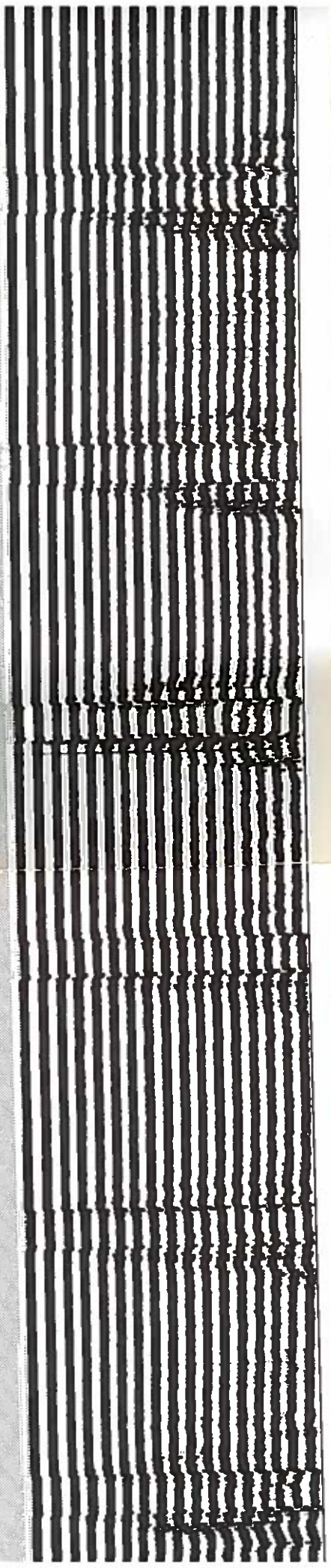
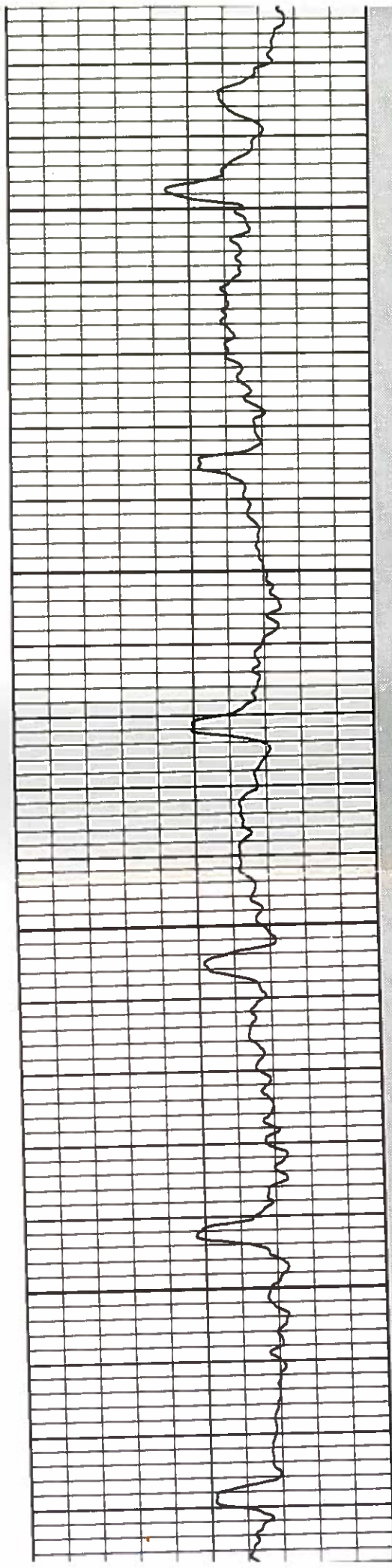


3750

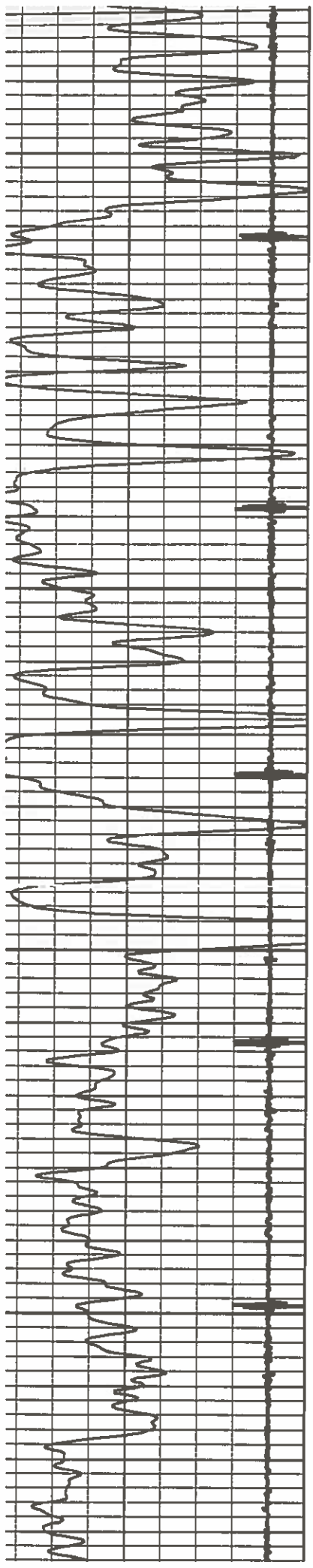
3800

3850

3900





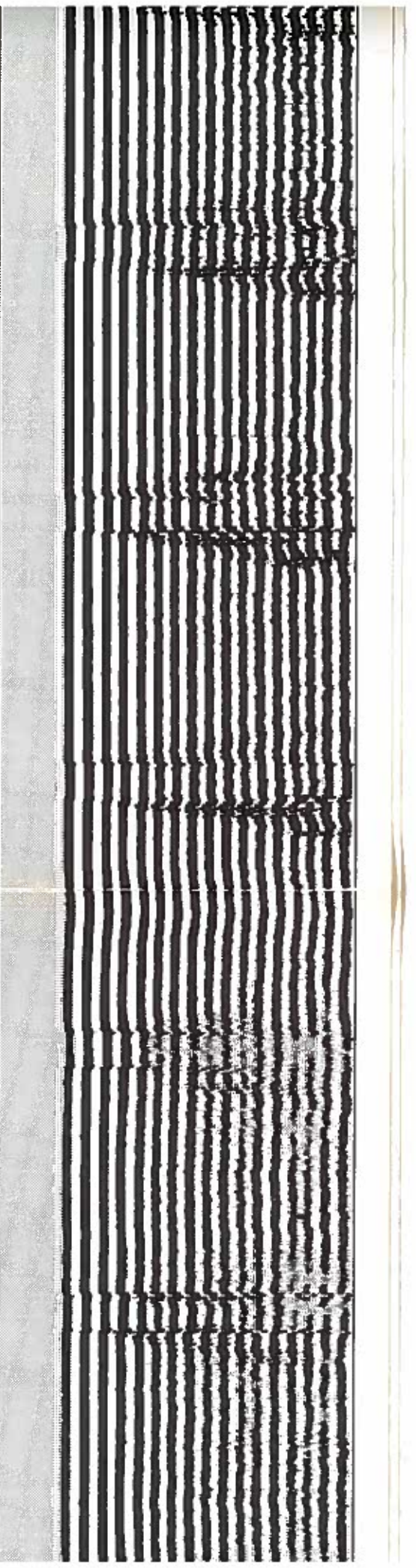
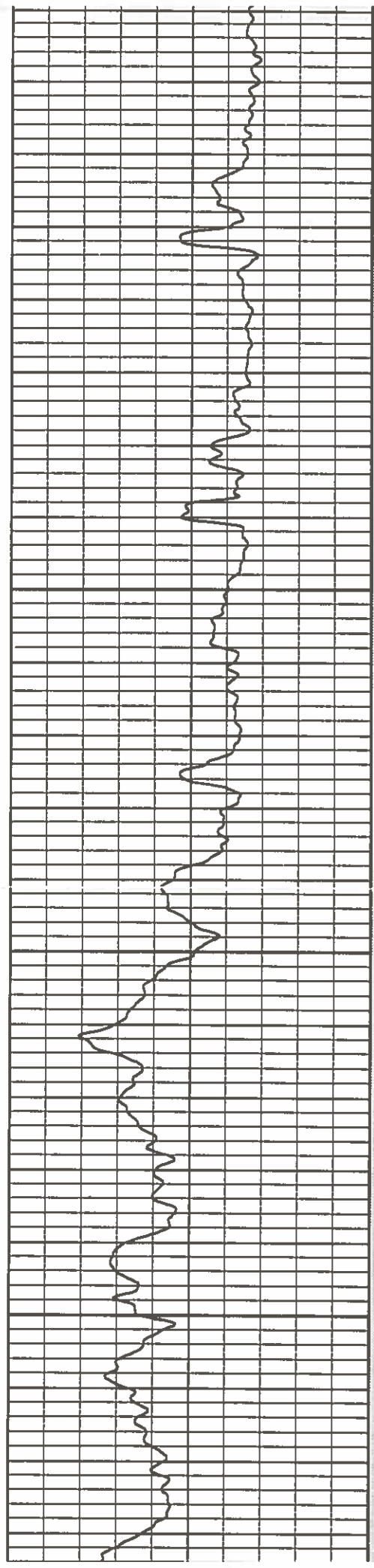


4000

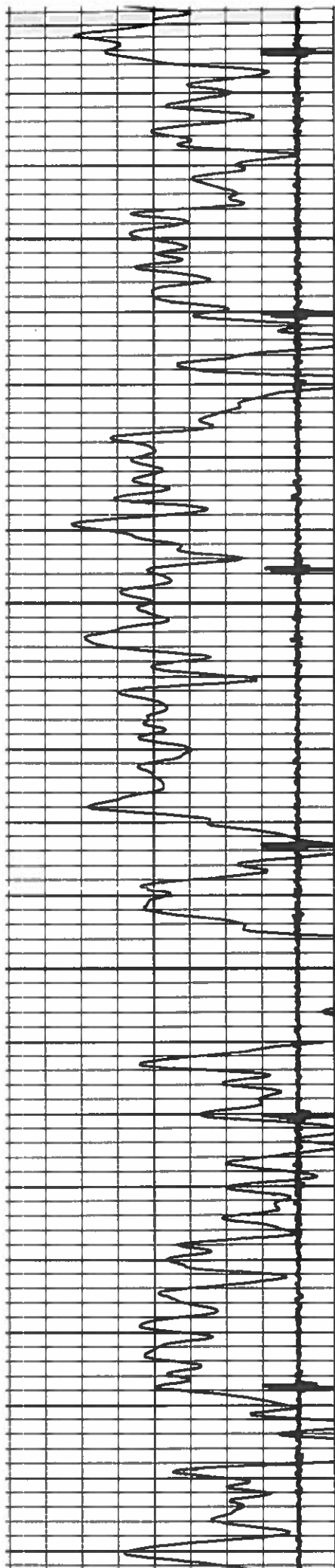
4050

4100

4150





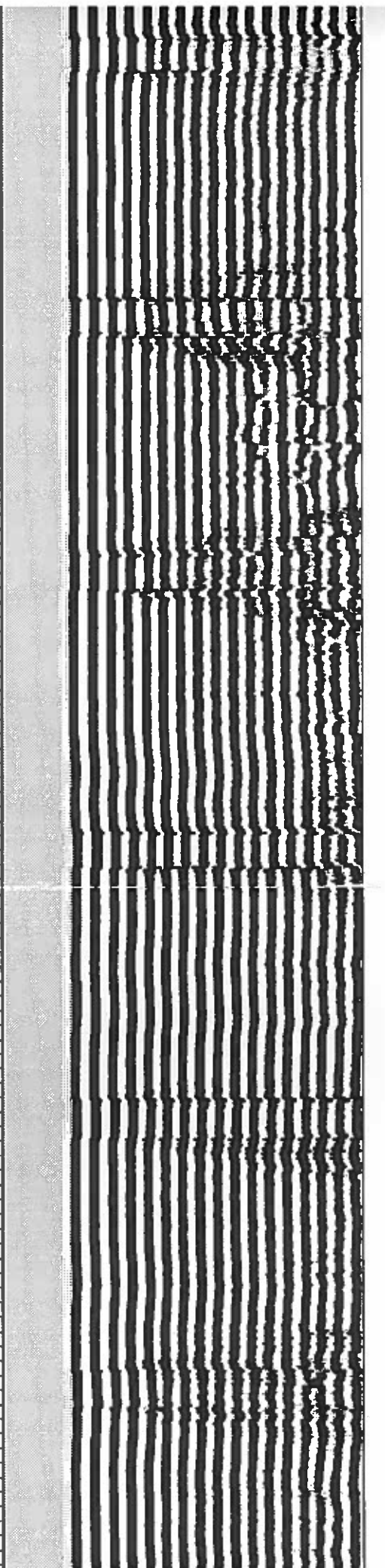
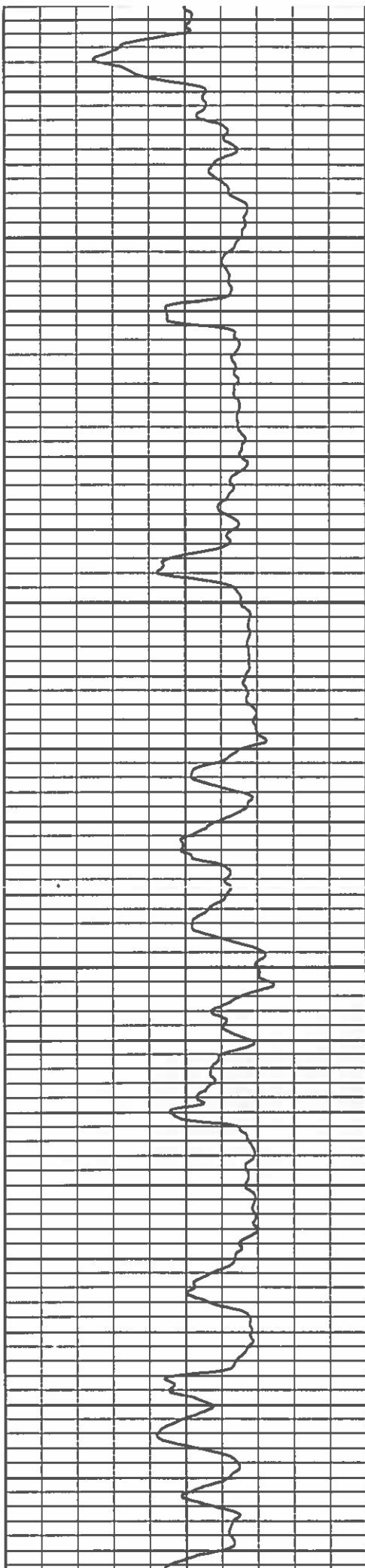


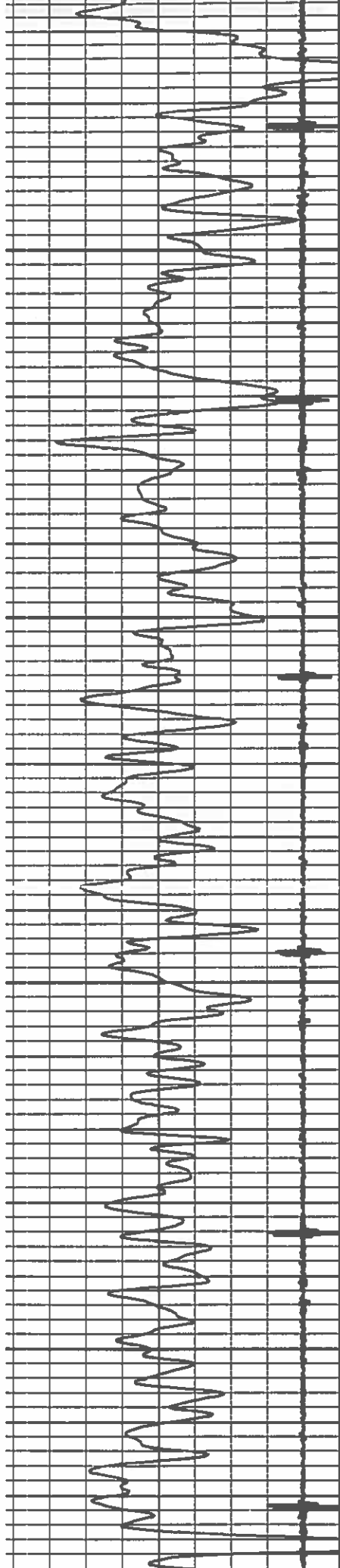
4250

4300

4350

4400



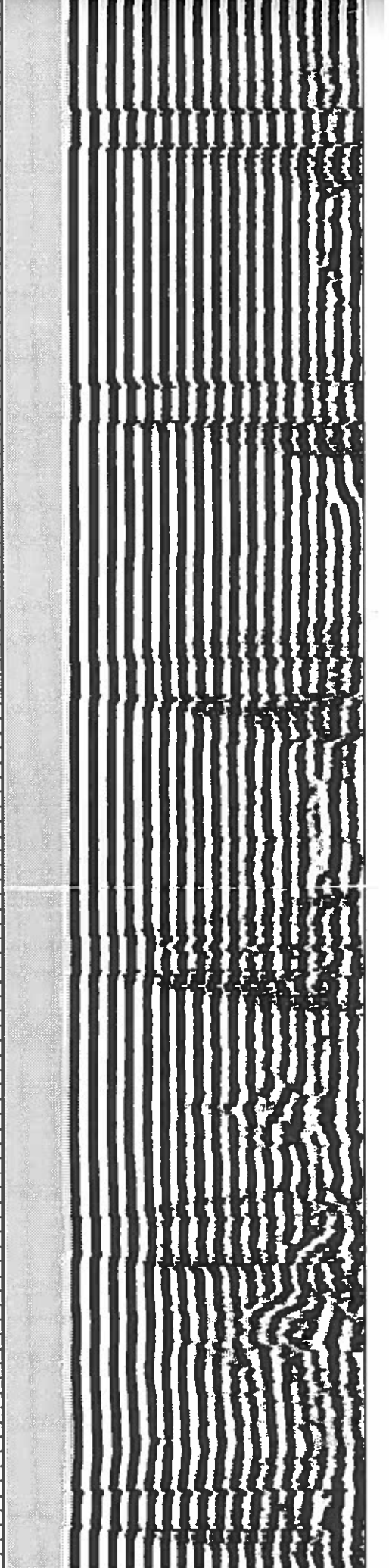
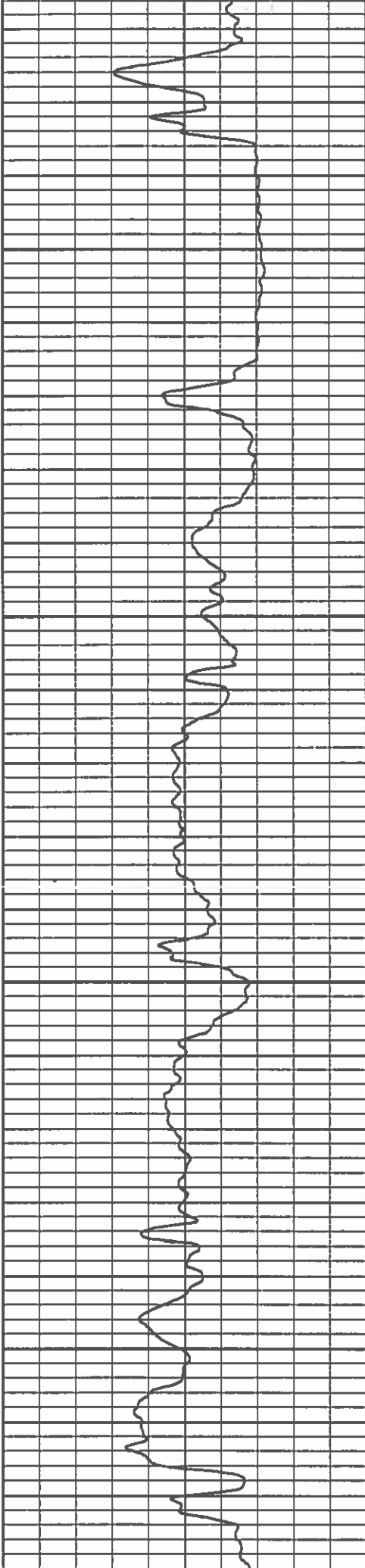


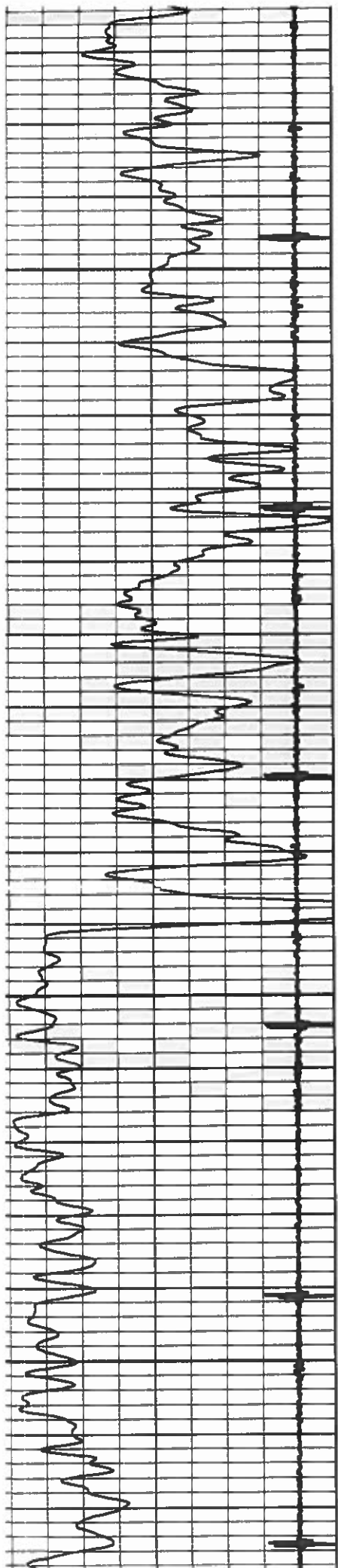
4500

4550

4600

4650



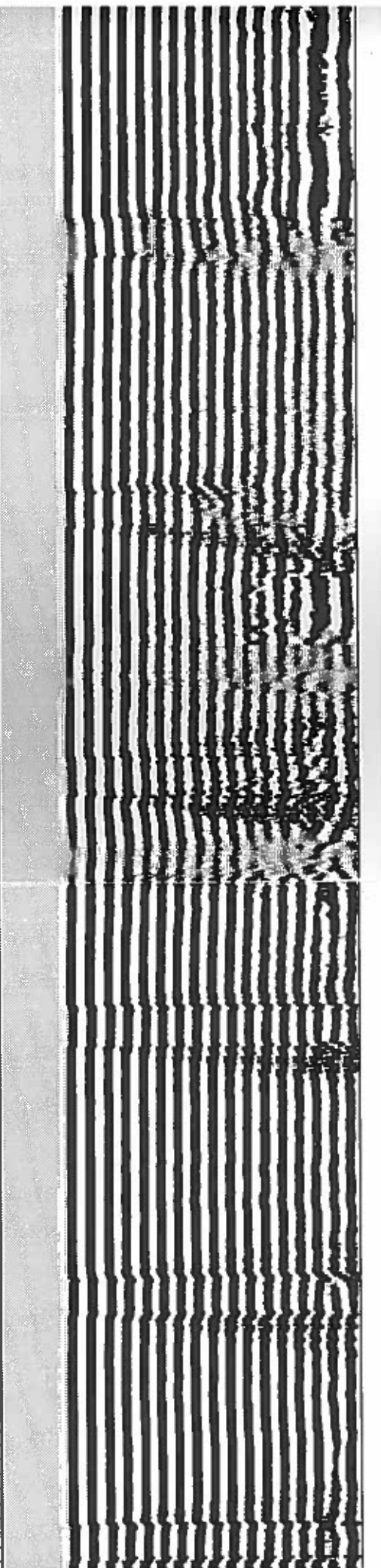
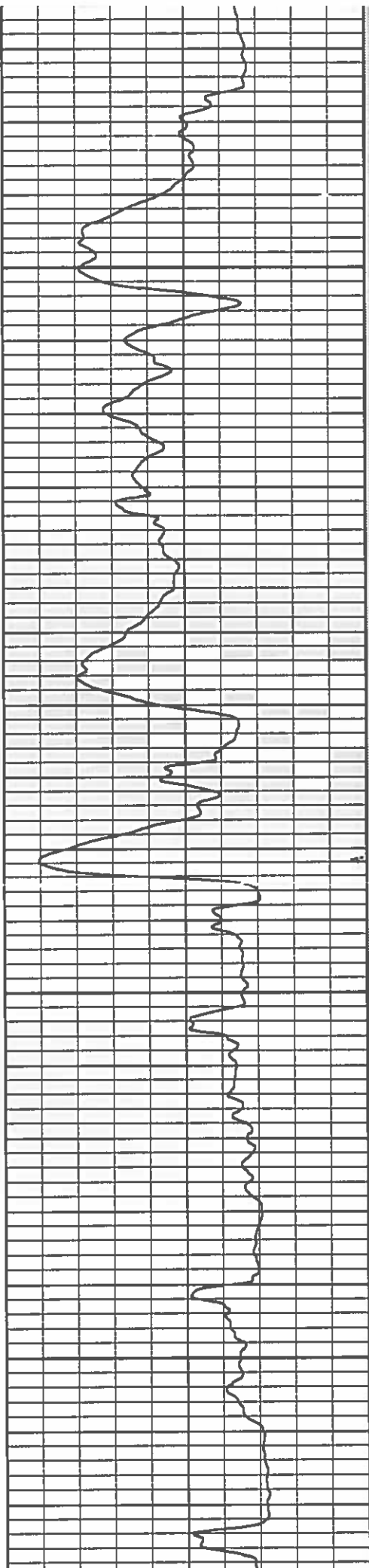


4750

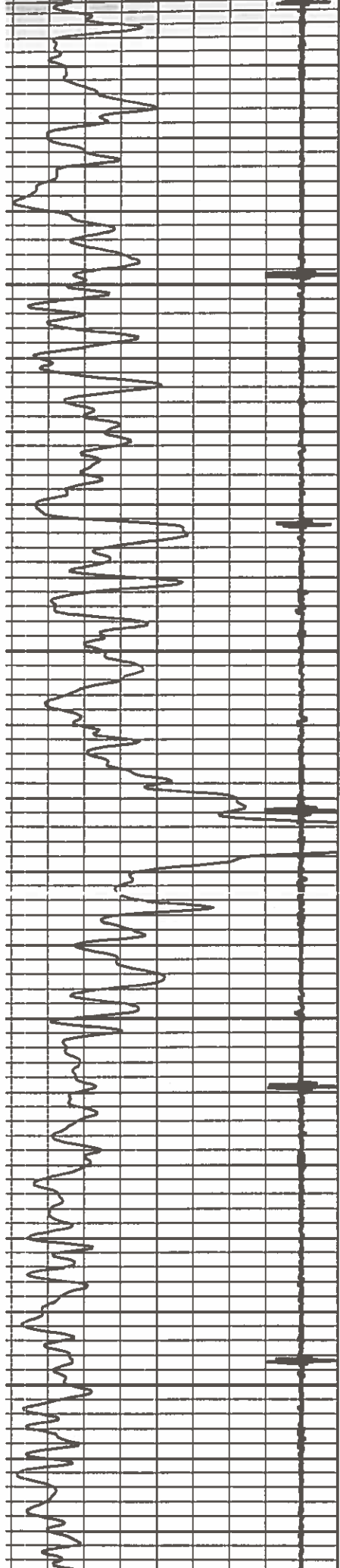
4800

4850

4900





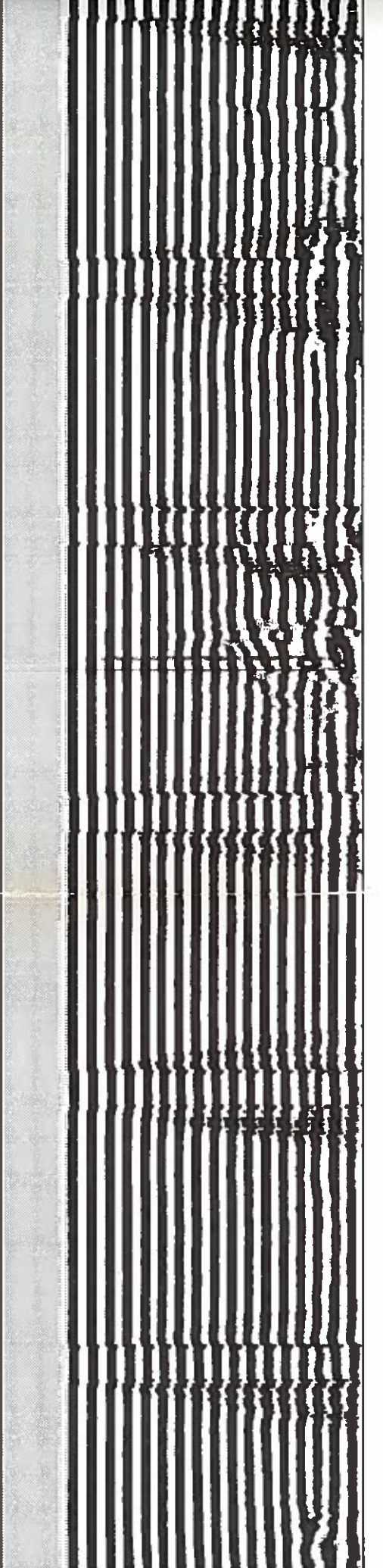
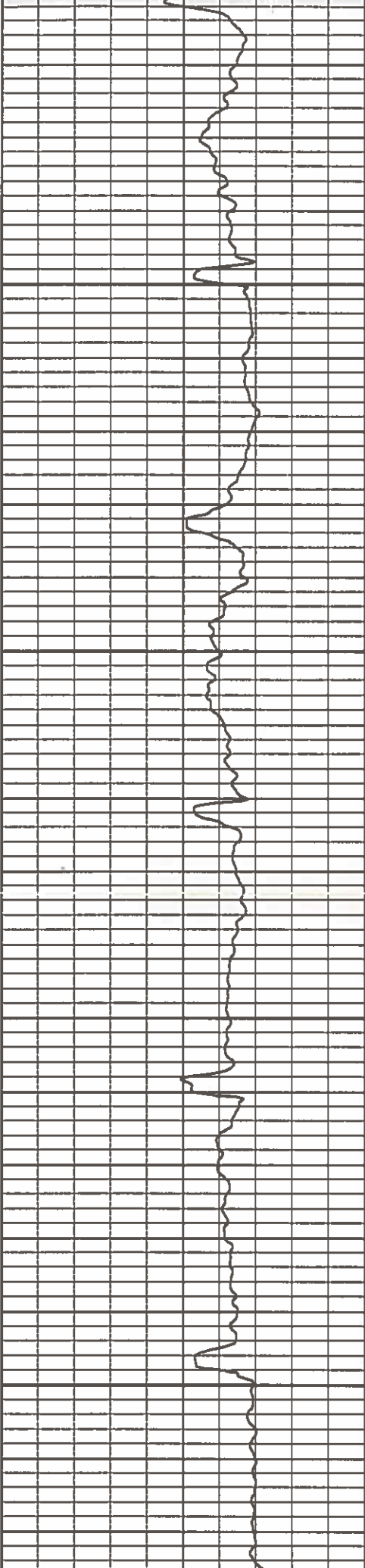


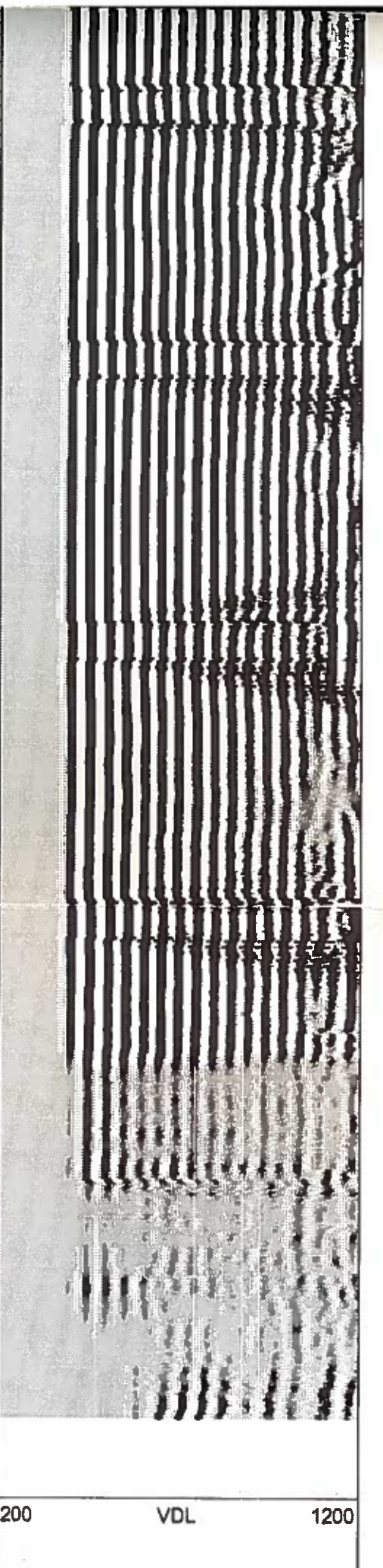
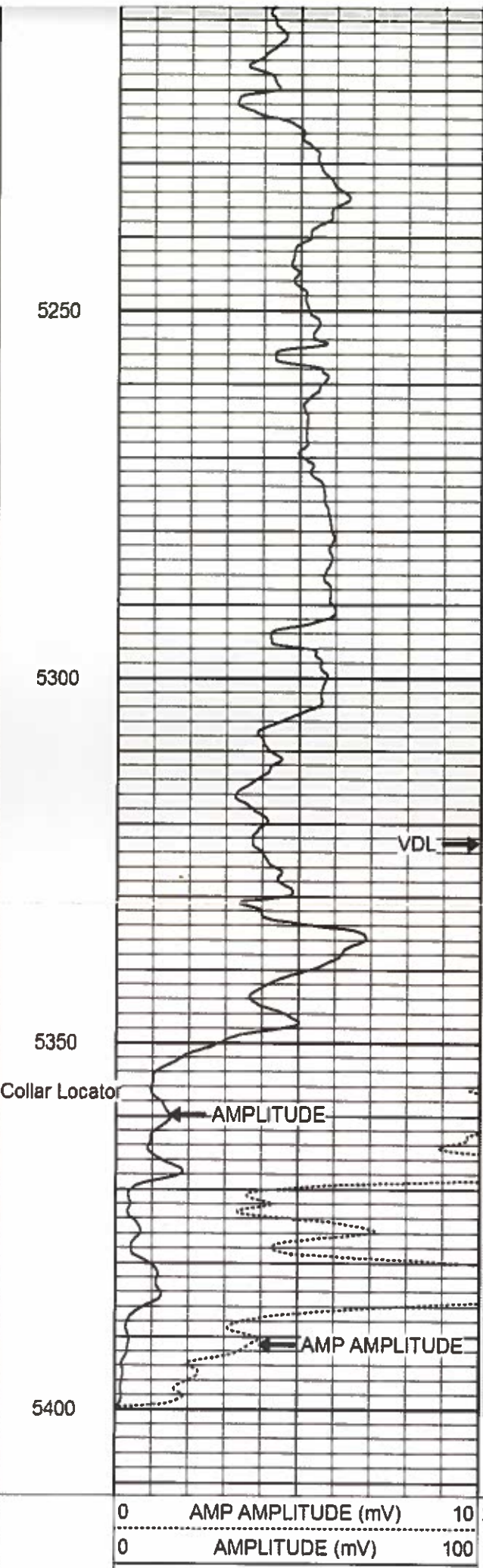
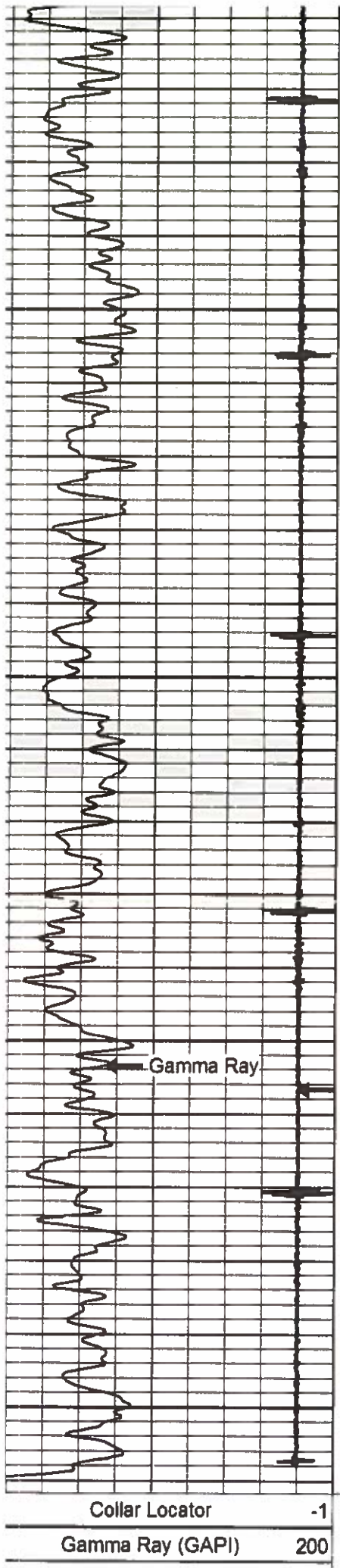
5000

5050

5100

5150





Collar Locator	-1
Gamma Ray (GAPI)	200

0	AMP AMPLITUDE (mV)	10
0	AMPLITUDE (mV)	100

200	VLD	1200
-----	-----	------