
WILLIAMS PRODUCTION RMT INC EBUSINE

**SG 431-32
RULISON
Garfield County , Colorado**

**Squeeze Perfs
17-Feb-2009**

Job Site Documents

The Road to Excellence Starts with Safety

Sold To #: 300721	Ship To #: 2705350	Quote #:	Sales Order #: 6511910
Customer: WILLIAMS PRODUCTION RMT INC EBUSINE		Customer Rep: Ralph Snow	
Well Name: SG	Well #: 431-32	API/UWI #: 05-045-17200	
Field: RULISON	City (SAP): RIFLE	County/Parish: Garfield	State: Colorado
Lat: N 39.397 deg. OR N 39 deg. 23 min. 50.64 secs.		Long: W 108.131 deg. OR W -109 deg. 52 min. 9.109 secs.	
Contractor: WORKOVER		Rig/Platform Name/Num: WORKOVER	
Job Purpose: Squeeze Perfs			
Well Type: Development Well		Job Type: Squeeze Perfs	
Sales Person: HARROLD, DALE		Srvc Supervisor: HOEFER, BRYAN	MBU ID Emp #: 415775

Job Personnel

HES Emp Name	Exp Hrs	Emp #	HES Emp Name	Exp Hrs	Emp #	HES Emp Name	Exp Hrs	Emp #
BANKS, BRENT A	5	371353	DUBON, TODD N	5	443351	HOEFER, BRYAN D	5	415775
MADRIGAL, MARK Henry	5	444368	MOORE, ALEX Vincent	5	158427	MOREY, STEVEN Wesley	5	453277

Equipment

HES Unit #	Distance-1 way	HES Unit #	Distance-1 way	HES Unit #	Distance-1 way	HES Unit #	Distance-1 way

Job Hours

Date	On Location Hours	Operating Hours	Date	On Location Hours	Operating Hours	Date	On Location Hours	Operating Hours
2/17/09	5	3						
TOTAL	5	3	Total is the sum of each column separately					

Job

Formation Name	Top	Bottom	Called Out	Date	Time	Time Zone
Formation Depth (MD)			On Location	17 - Feb - 2009	04:00	MST
Form Type	BHST		Job Started	17 - Feb - 2009	07:00	MST
Job depth MD	6490. ft	Job Depth TVD	Job Completed	17 - Feb - 2009	10:07	MST
Water Depth		Wk Ht Above Floor	Departed Loc	17 - Feb - 2009	12:28	MST
Perforation Depth (MD)	From	To		17 - Feb - 2009	14:15	MST

Well Data

Description	New / Used	Max pressure psig	Size in	ID in	Weight lbm/ft	Thread	Grade	Top MD ft	Bottom MD ft	Top TVD ft	Bottom TVD ft
-------------	------------	-------------------	---------	-------	---------------	--------	-------	-----------	--------------	------------	---------------

Sales/Rental/3rd Party (HES)

Description	Qty	Qty uom	Depth	Supplier
PORT. DAS W/CEMWIN;ACQUIRE W/HES, ZI	1	JOB		
ADC (AUTO DENSITY CTRL) SYS, /JOB,ZI	1	JOB		

Tools and Accessories

Type	Size	Qty	Make	Depth	Type	Size	Qty	Make	Depth	Type	Size	Qty	Make
Guide Shoe					Packer				3588	Top Plug			
Float Shoe					Bridge Plug					Bottom Plug			
Float Collar					Retainer					SSR plug set			
Insert Float										Plug Container			
Stage Tool										Centralizers			

Miscellaneous Materials

Gelling Agt	Conc	Surfactant	Conc	Acid Type	Qty	Conc	%
Treatment Fld	Conc	Inhibitor	Conc	Sand Type	Size	Qty	

Fluid Data									
Stage/Plug #: 1									
Fluid #	Stage Type	Fluid Name	Qty	Qty uom	Mixing Density lbm/gal	Yield ft ³ /sk	Mix Fluid Gal/sk	Rate bbl/min	Total Mix Fluid Gal/sk
1	Injection Test		10	bbl	.	.0	.0	.0	
2	Tail Cement	SQUEEZECM (TM) SYSTEM (452971)	350	sacks	15.8	1.15	4.96		4.96
		4.958 Gal	FRESH WATER						
3	Displacement Fluid		15	bbl	8.33	.0	.0	.0	
Calculated Values		Pressures		Volumes					
Displacement	15	Shut In: Instant		Lost Returns		Cement Slurry		Pad	
Top Of Cement		5 Min		Cement Returns		Actual Displacement		Treatment	
Frac Gradient		15 Min		Spacers		Load and Breakdown		Total Job	
Rates									
Circulating	3	Mixing		3	Displacement	1	Avg. Job		2
Cement Left In Pipe	Amount	0 ft	Reason						
Frac Ring # 1 @	ID	Frac ring # 2 @	ID	Frac Ring # 3 @	ID	Frac Ring # 4 @	ID		
The Information Stated Herein Is Correct				Customer Representative Signature					

The Road to Excellence Starts with Safety

Sold To #: 300721	Ship To #: 2705350	Quote #:	Sales Order #: 6511910
Customer: WILLIAMS PRODUCTION RMT INC EBUSINE		Customer Rep: Ralph Snow	
Well Name: SG	Well #: 431-32	API/UWI #: 05-045-17200	
Field: RULISON	City (SAP): RIFLE	County/Parish: Garfield	State: Colorado
Legal Description:			
Lat: N 39.397 deg. OR N 39 deg. 23 min. 50.64 secs.		Long: W 108.131 deg. OR W -109 deg. 52 min. 9.109 secs.	
Contractor: WORKOVER		Rig/Platform Name/Num: WORKOVER	
Job Purpose: Squeeze Perfs			Ticket Amount:
Well Type: Development Well		Job Type: Squeeze Perfs	
Sales Person: HARROLD, DALE	Srvc Supervisor: HOEFER, BRYAN	MBU ID Emp #: 415775	

Activity Description	Date/Time	Cht #	Rate bbl/min	Volume bbl		Pressure psig		Comments
				Stage	Total	Tubing	Casing	
Call Out	02/17/2009 04:00							
Pre-Convoy Safety Meeting	02/17/2009 06:00							WITH ALL HES EE'S
Arrive at Location from Service Center	02/17/2009 07:00							
Assessment Of Location Safety Meeting	02/17/2009 07:01							WITH ALL HES EE'S
Pre-Rig Up Safety Meeting	02/17/2009 08:55							WITH ALL HES EE'S
Rig-Up Equipment	02/17/2009 09:00							ELITE #6, 1-660 BULK TRUCK, IRON TO FLOOR, IRON TO PIT, TWO WATER LINES
Rig-Up Completed	02/17/2009 09:30							
Start Job	02/17/2009 10:07							4.5" 11.6# CASING, PERFS AT 3782, PACKER AT 3588 ON 2 3/8" 4.6# J-55 TUBING
Test Lines	02/17/2009 10:13		0.5	0.1		5150.0		TESTED LINES AND PUMP TO 5150
Safety Meeting - Pre Job	02/17/2009 10:15							WITH RIG CREW AND ALL HES EE'S
Injection Test	02/17/2009 10:40		3	10		1750.0		FRESH WATER
ISIP	02/17/2009 10:42		0	0		800.0		
Pump Cement	02/17/2009 10:47		3	59.4		2150.0		Pumped 10 bbls @15.8#, 25bbls @17#, 10bbls @17.5#, 14.4 bbls @17
Start Squeeze	02/17/2009 11:07		1	12		980.0		FRESH WATER
Shut-In Pressure @ 5 Minutes	02/17/2009 11:32			12		1032.0		

Sold To # : 300721

Ship To # :2705350

Quote # :

Sales Order # :

6511910

SUMMIT Version: 7.20.130

Tuesdav. Februarv 17. 2009 01:44:00

Activity Description	Date/Time	Cht #	Rate bbl/min	Volume bbl		Pressure psig		Comments
				Stage	Total	Tubing	Casing	
Start Squeeze	02/17/2009 11:37		0.3	12.25		1085.0		
Shut-In Pressure @ 5 Minutes	02/17/2009 11:37					1085.0		
Start Squeeze	02/17/2009 11:42		0.3	12.5		1147.0		
Shut-In Pressure @ 2 Minutes	02/17/2009 11:43					1147.0		
Start Squeeze	02/17/2009 11:45		0.3	12.75		1211.0		
Shut-In Pressure @ 2 Minutes	02/17/2009 11:46					1211.0		
Start Squeeze	02/17/2009 11:48		0.3	13		1244.0		
Shut-In Pressure @ 2 Minutes	02/17/2009 11:49					1244.0		
Start Squeeze	02/17/2009 11:51		0.3	13.25		1297.0		
Shut-In Pressure @ 2 Minutes	02/17/2009 11:52					1297.0		
Start Squeeze	02/17/2009 11:54		0.3	13.5		1370.0		
Shut-In Pressure @ 2 Minutes	02/17/2009 11:55					1370.0		
Start Squeeze	02/17/2009 11:57		0.3	13.75		1450.0		
Shut-In Pressure @ 2 Minutes	02/17/2009 11:58					1450.0		
Start Squeeze	02/17/2009 12:00		0.3	14		1557.0		
Shut-In Pressure @ 2 Minutes	02/17/2009 12:01					1557.0		
Start Squeeze	02/17/2009 12:03		0.3	14.25		1690.0		
Shut-In Pressure @ 2 Minutes	02/17/2009 12:04					1690.0		
Start Squeeze	02/17/2009 12:06		0.3	14.5		1815.0		
Shut-In Pressure @ 2 Minutes	02/17/2009 12:07					1815.0		
Start Squeeze	02/17/2009 12:09		0.3	14.6		1800.0		
Shut-In Pressure @ 1 Minute	02/17/2009 12:10					1720.0		
Start Squeeze	02/17/2009 12:10		0.3	14.7		1800.0		

Sold To # : 300721

Ship To # : 2705350

Quote # :

Sales Order # :

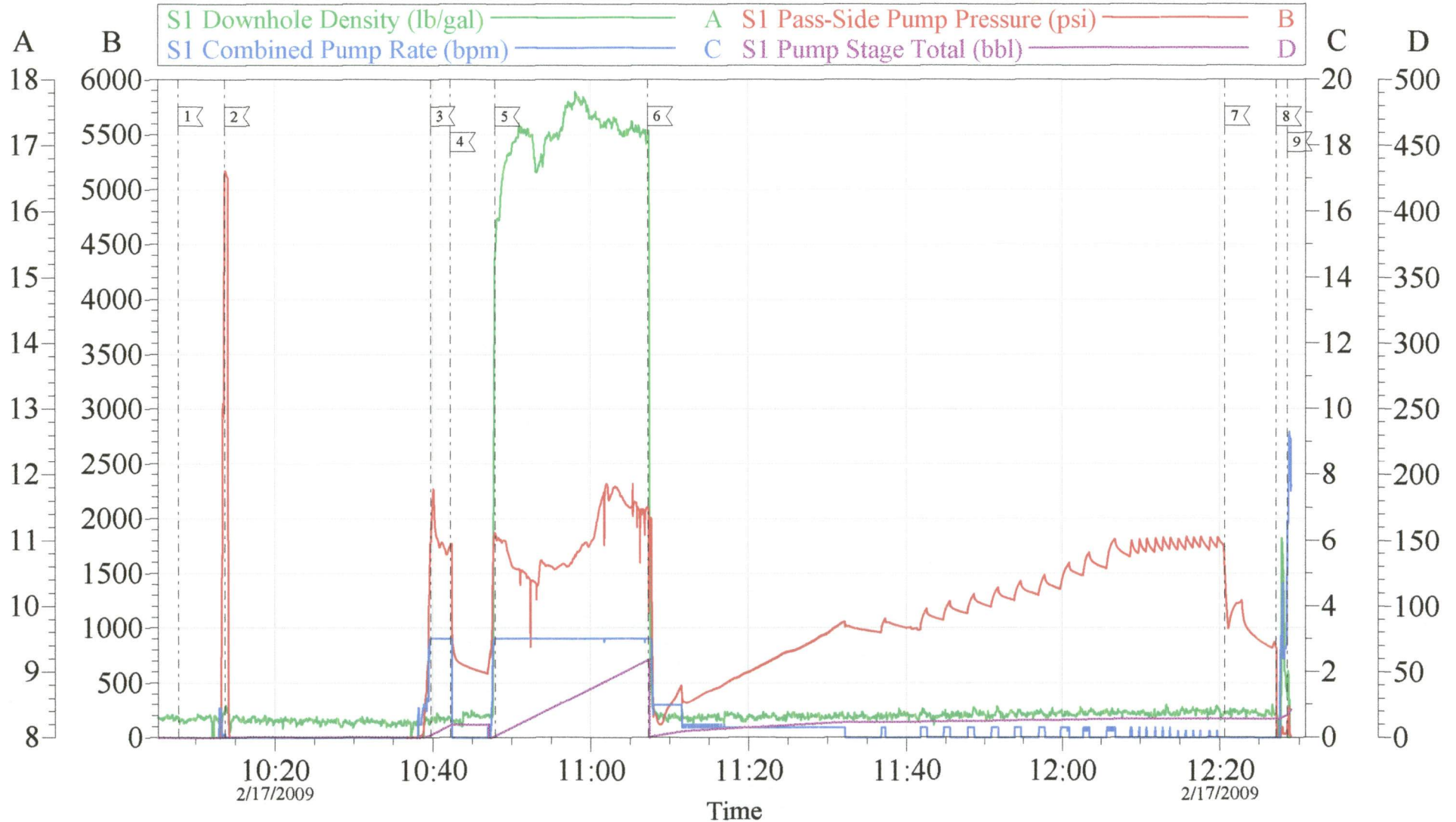
6511910

SUMMIT Version: 7.20.130

Tuesdav. Februarv 17. 2009 01:44:00

Activity Description	Date/Time	Cht #	Rate bbl/min	Volume bbl		Pressure psig		Comments
				Stage	Total	Tubing	Casing	
Shut-In Pressure @ 1 Minute	02/17/2009 12:11					1743.0		
Start Squeeze	02/17/2009 12:11		0.3	14.8		1800.0		
Shut-In Pressure @ 1 Minute	02/17/2009 12:12					1757.0		
Start Squeeze	02/17/2009 12:12		0.3	14.9		1800.0		
Shut-In Pressure @ 1 Minute	02/17/2009 12:13					1769.0		
Start Squeeze	02/17/2009 12:13		0.3	15		1800.0		
Shut-In Pressure @ 1 Minute	02/17/2009 12:14					1792.0		
Start Squeeze	02/17/2009 12:14		0.3	15.1		1800.0		
Shut In Well	02/17/2009 12:15					1798.0		
Bleeding Tubing Or Casing	02/17/2009 12:20					1000.0		BLEED DOWN CASING TO STING OUT OF TOOL
Reverse Circ Well	02/17/2009 12:27		3	20				Rig Reversed Out
Shutdown	02/17/2009 12:33							
End Job	02/17/2009 12:34							
Safety Meeting - Pre Rig-Down	02/17/2009 13:00							WITH ALL HES EE'S
Rig-Down Equipment	02/17/2009 13:05							
Rig-Down Completed	02/17/2009 14:00							
Safety Meeting - Departing Location	02/17/2009 14:05							WITH ALL HES EE'S
Depart Location for Service Center or Other Site	02/17/2009 14:15							THANK YOU FOR USING GRAND JUNCTION HALLIBURTON CEMENT DEPARTMENT, BRYAN HOEFER AND CREW

Williams Squeeze



Local Event Log

1 Start Job	10:07:52	2 Test lines	10:13:44	3 Injection Test	10:39:44
4 ISIP	10:42:17	5 Pump Cement	10:47:57	6 Start Displacement/Start Squeeze Cement	11:07:19
7 Shut Down/Bleed pressure to 1000	12:20:40	8 Bleed Off	12:27:07	9 End Job	12:28:30

Customer: Williams
Well Description: SG-431-32
Company Rep: Ralph Snow

Job Date: 17-Feb-2009
Job Type: Squeeze
Cement Supervisor: Bryan Hoefer

Sales Order #: 6511910
ADC Used: Yes
Elite # / Operator: #6 Brent Banks

OptiCem v6.4.0
17-Feb-09 14:13