

SERVICE ORDER - 1724-19162

Date: 1/29/2016

Well Name:
GILCREST TOWNSITE 21-34

Location:

County - State:
WELD, CO

RRC #:

Type Of Service:
CEMENT:MISC

Customer's Order #:

Customer: NOBLE ENERGY, INC.

Address: 804 GRAND AVE.
PLATTEVILLE, CO 80651

As a consideration, the above named Customer agrees to pay Basic Energy Services Inc. in accordance with the rates and terms stated in Basic Energy Services current price lists. Invoices are payable NET 30 (SEE 10.2) after date of invoice. Upon Customer's default in payment of Customers account by such date, Customer agrees to pay interest thereon after default at 18% per annum. In the event it becomes necessary to employ an attorney to enforce collection of said account, Customer agrees to pay all the collection costs and attorney fees. These terms and conditions shall be governed by the laws of the state where services are performed or equipment or materials are furnished.

Basic Energy Services, warrants only to the product, supplies and materials and that the same are free from defects in workmanship. THERE ARE NO WARRANTIES, EXPRESS OR IMPLIED, MERCHANTABILITY, FITNESS FOR A PARTICULAR PURPOSE OR OTHERWISE WHICH EXTEND BEYOND THOSE STATED IN THE IMMEDIATELY PRECEDING SENTENCE. Basic Energy Services, liability and Customer's exclusive remedy in any cause of action (whether in contract, tort, product liability, breach of warranty or otherwise) arising out of the sale or use of any products, supplies, or materials upon their return to Basic Energy Services, is expressly limited to the replacement of such products, supplies or materials or, at Basic Energy Services' option, to the allowance to the Customer of credit for the cost of such items. In no event shall Basic Energy Services be liable for special, indirect, punitive or consequential damages.

[illegible]

TRUCK NUMBER:

DRIVER:

THIS JOB WAS SATISFACTORILY COMPLETED
OPERATION OF EQUIPMENT WAS SATISFACTORY
PERFORMANCE OF PERSONEL WAS SATISFACTORY

YES

1

11

11

NO

1

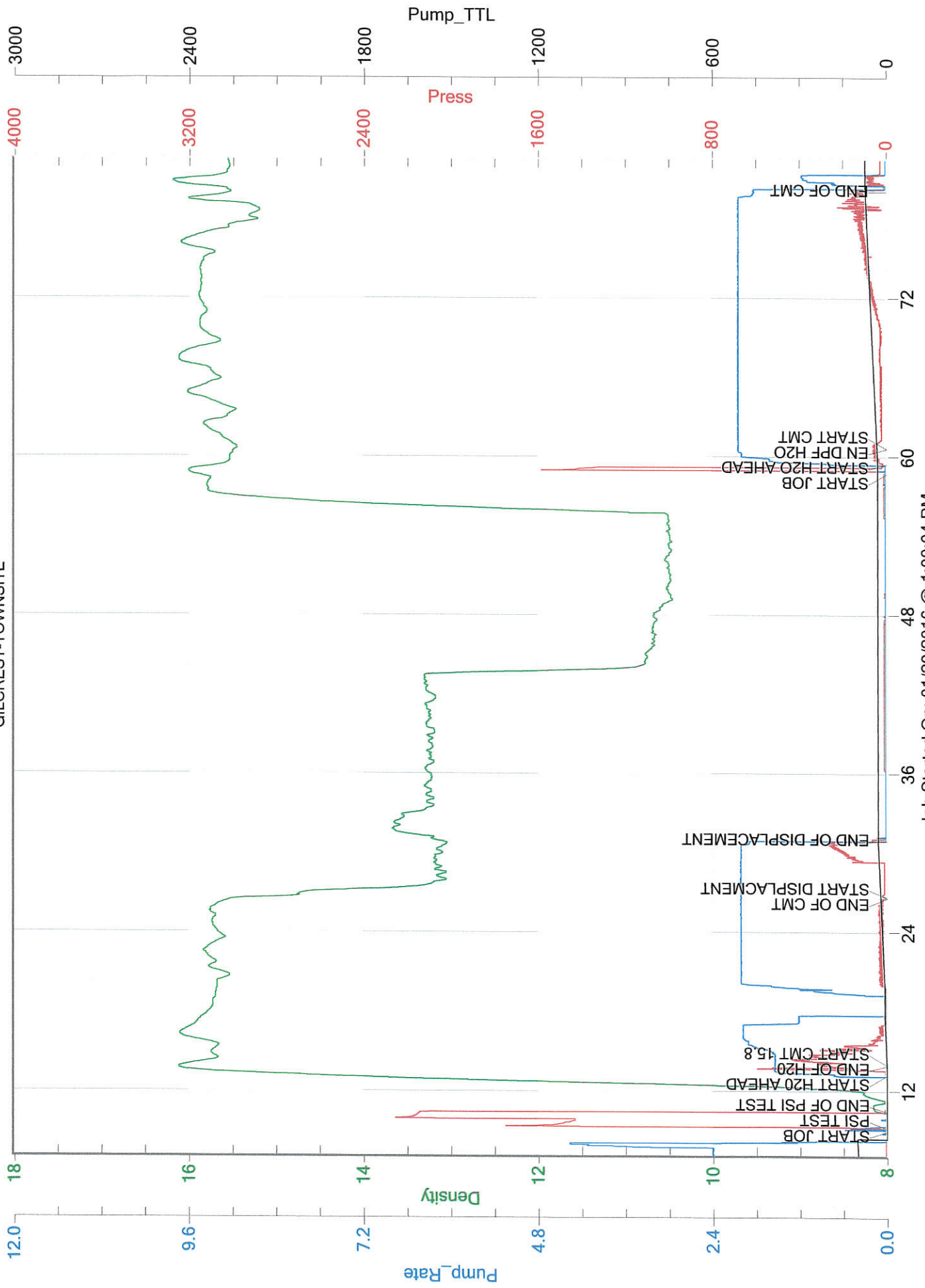
11

11

BASIC ENERGY SERVICES - TREATMENT/CEMENTATION

CUSTOMER OR HIS AGENT SIGNATURE

NOBLE
GILCREST-TOWNSITE





Service Order #: 19162

Date: 29-Jan-16

Well Name	Location	County	St	API#		
GILCREST-TOWN 21-34		WELD	CO	05-123-19039		
Formation	Cement Via	Type Of Service	Well Type	Age	AFE#	PO#
	TUBING	PLUG	OIL		203636	

Customer: NOBLE

Remarks: G CMT 1.15 YEILD 4.99 GAL/SK
TD 2520' 100 SKS 20.5 BBLS
TD 500' 195 SKS 40 BBLS
TOP OFF 5 SKS 1 BBL

Customer Rep:

PH:

WELLBORE DATA				
Type	Size	Weight	Depth	Volume
Surface Casing:	8.625	24.0	371.0	
Production Casing:	4.500	11.6	2,520.0	39.0
Intermediate:				
Drill Pipe:				
Tubing:	2.375	4.7	2,520.0	9.0

Type	Size	Depth (Top)	Depth (Bot)	Volume
Liner:				
Open Hole:				

OTHER DATA		
BHT	Max PSI	Total Depth

Packer or RetainerType / Depth:

Perf Depths:	#	Total
	0	0
	0	
	0	

TIME	PUMP RATES		DENSITY	PRESS	STG TOT	TOTAL	REMARKS
	WATER (gpm)	PUMP (bpm)	(lb/gal)	(psi)	(bbls)	(bbls)	
13:09	0	0.0	7.89	0	0.0	0.0	START JOB
13:09	0	0.0	7.88	6	0.0	0.0	PSI TEST
13:10	0	0.0	8.02	2,101	0.1	0.1	END OF PSI TEST
13:13	71	0.7	14.79	0	0.0	0.1	START H2O AHEAD
13:14	53	1.5	16.07	251	1.0	1.1	END OF H2O
13:14	53	1.5	16.05	268	0.0	1.1	START CMT 15.8
13:27	0	2.0	15.16	0	20.6	21.7	END OF CMT
13:27	0	2.0	15.01	0	0.0	21.8	START DISPLACEMENT
13:31	0	1.0	13.13	31	8.7	30.4	END OF DISPLACEMENT
14:18	1	0.0	15.97	6	0.0	30.5	START JOB
14:19	0	0.8	15.58	11	0.0	30.5	START H2O AHEAD
14:20	0	2.0	15.45	48	2.1	32.5	EN DPF H2O
14:20	0	2.0	15.45	57	0.0	32.5	START CMT
14:39	49	1.8	15.52	132	40.0	72.5	END OF CMT

Summary

Max Fl. Rate	Avg Fl. Rate	Max Psi	Avg Psi
2.0	1.7	2,252	57

Customer Acknowledgement:

Service Rating:

- ☐ Satisfactory
☐ Unsatisfactory

Cementer:

R.ACEVEDO

PRODUCTS USED