

# WPX Energy RWF 724-16 HN1 DFIT Analysis

John Gilbert

11 February 2014

Barree & Associates

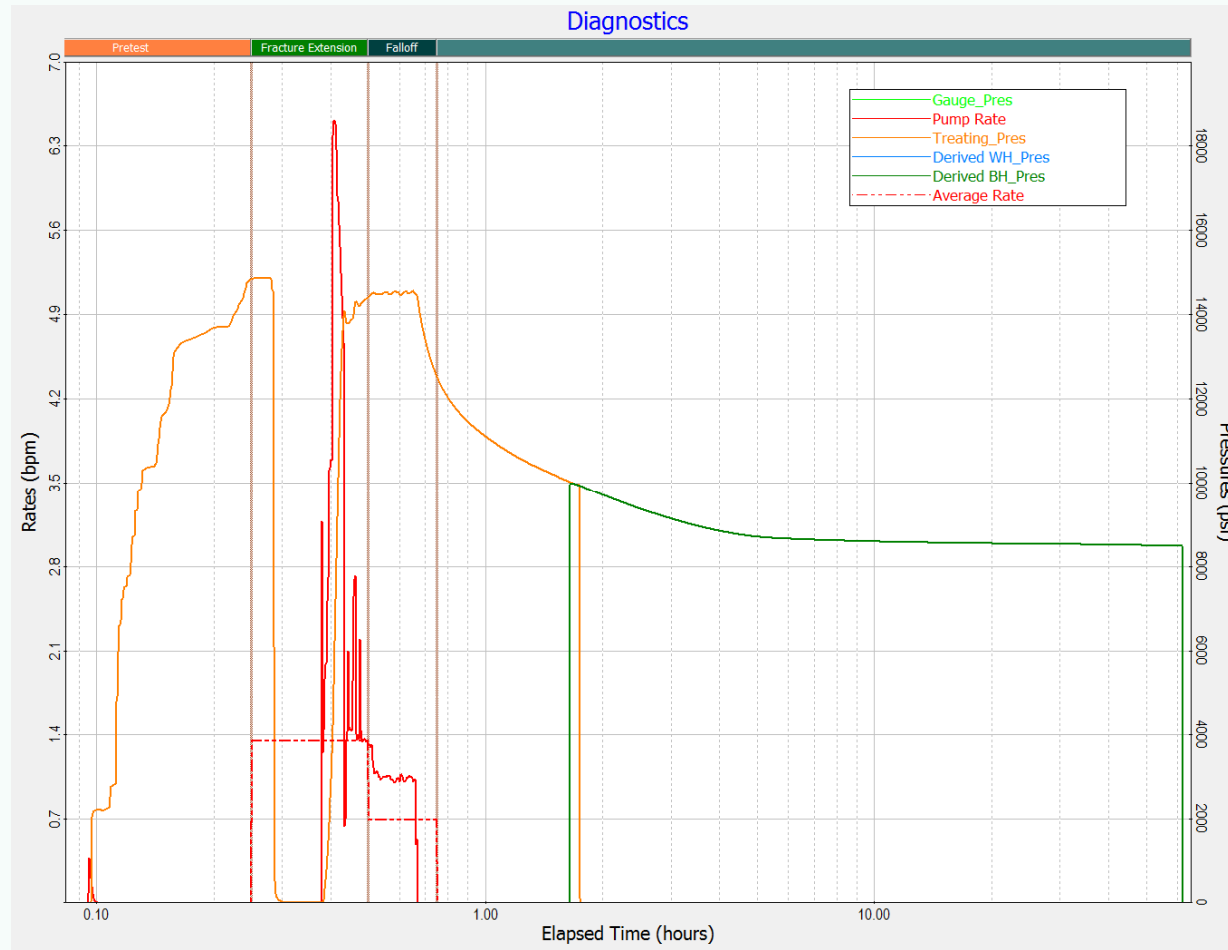


# DFIT Overview

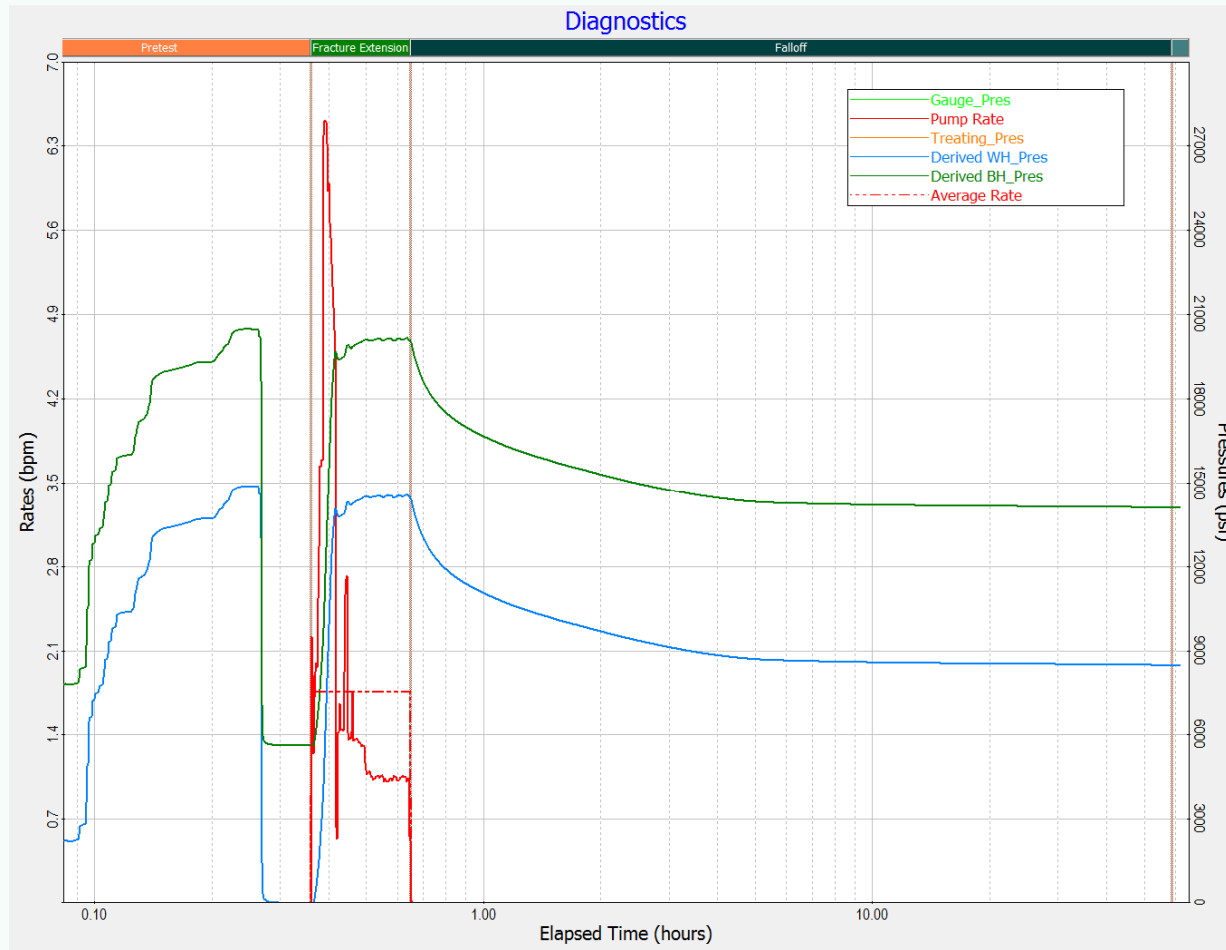
---

- Injection of 1283 gals of brine at an average of 1.76 bpm into vertical wellbore
- Perforation at 12973 ft
- Hydrostatic offset of 5603 psi added to surface gauge pressure
- Pressure files merged as surface pressure gauge not recorded until under 10 Kpsi on surface

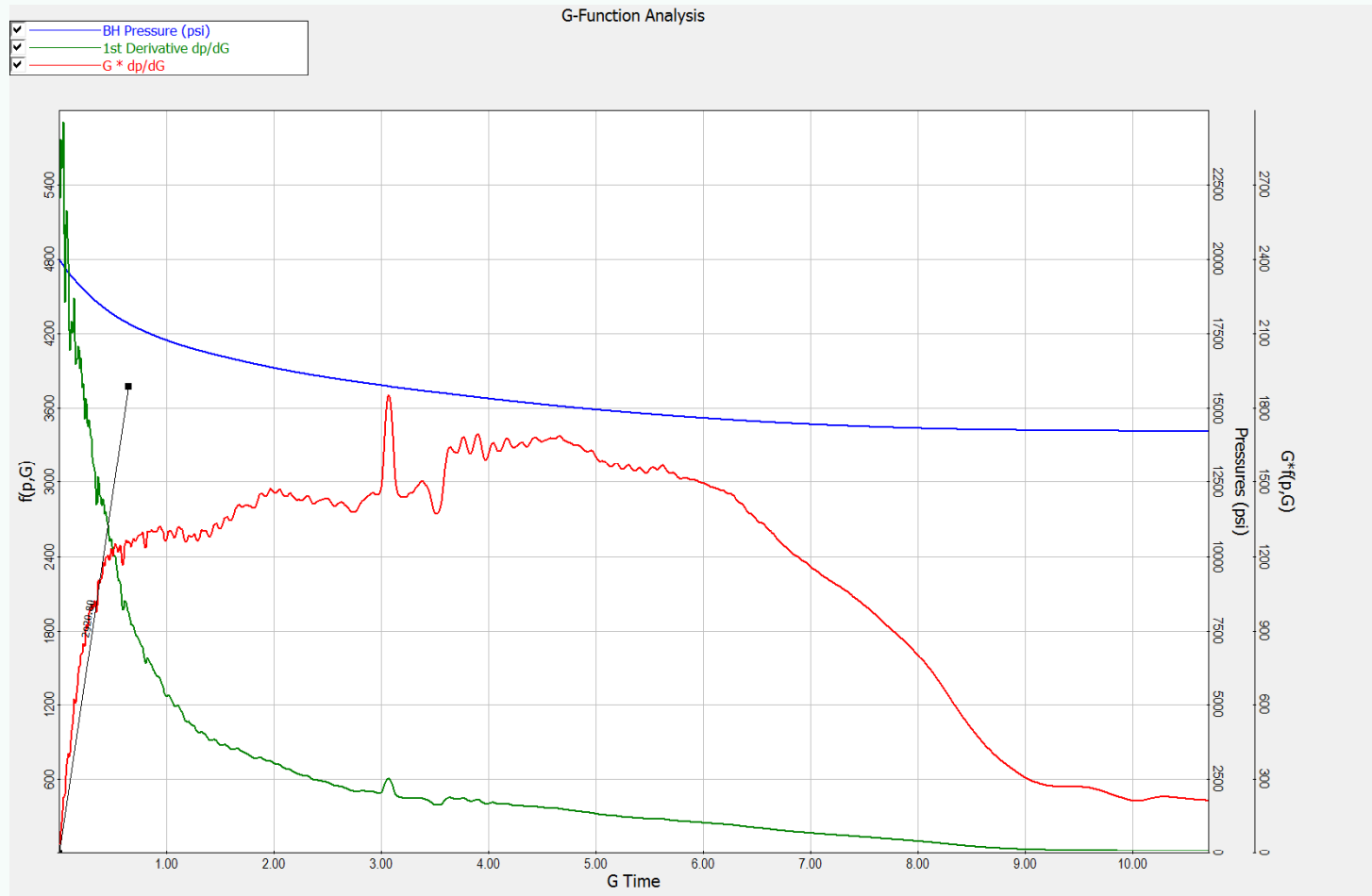
# Job Files



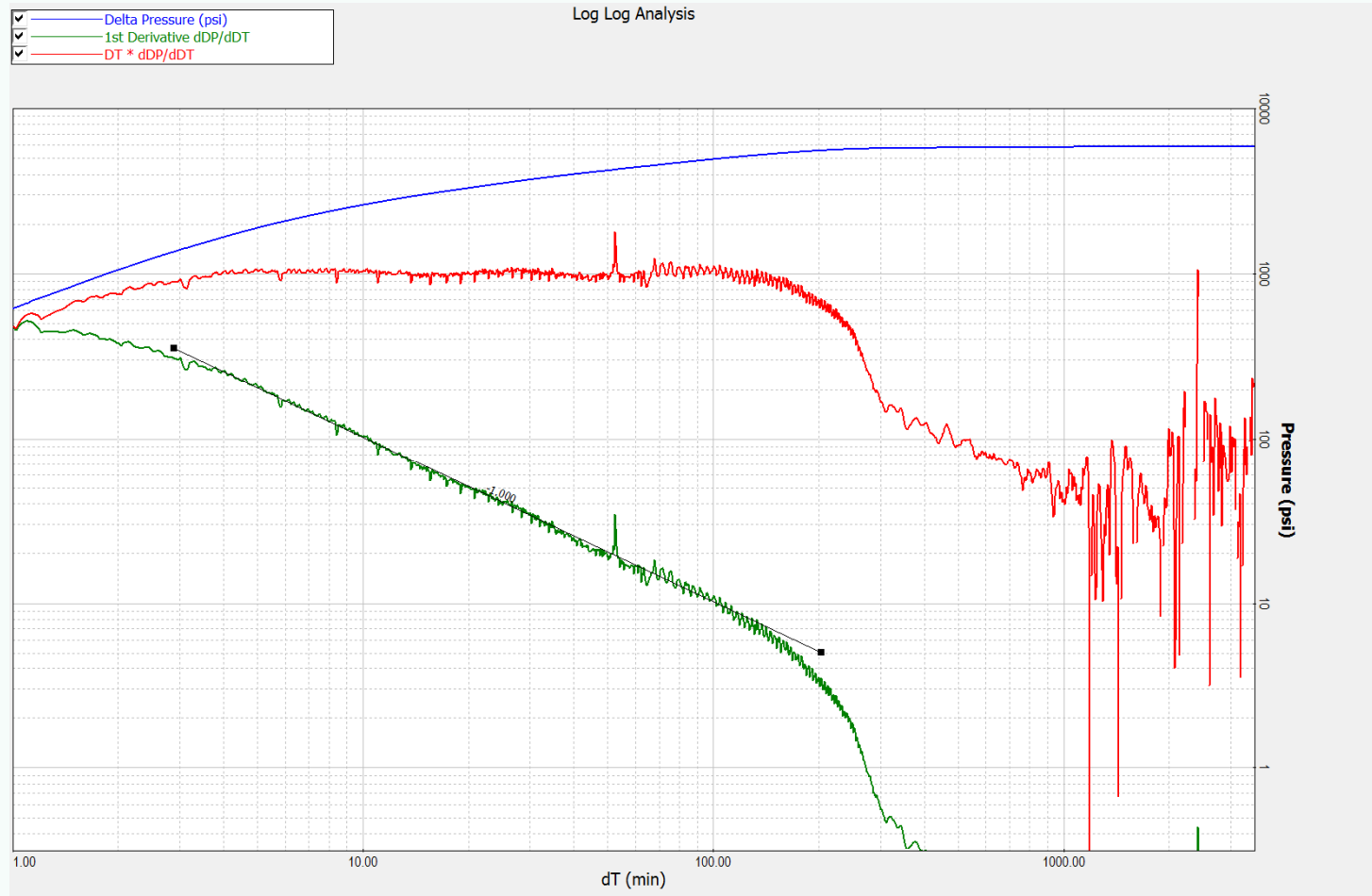
# Merged Job Data



# G-Function Plot



# Log Log Plot



# DFIT Summary

---

- DFIT injection has not created an analyzable pressure decline and minimal useful information can be obtained from the test
- Pressure decline occurs in excess of overburden with the last read pressure at 1.08 psi/ft
- Log Log plot exhibits a zero slope on the adaptive derivative indicating that a simple fracture has not been created