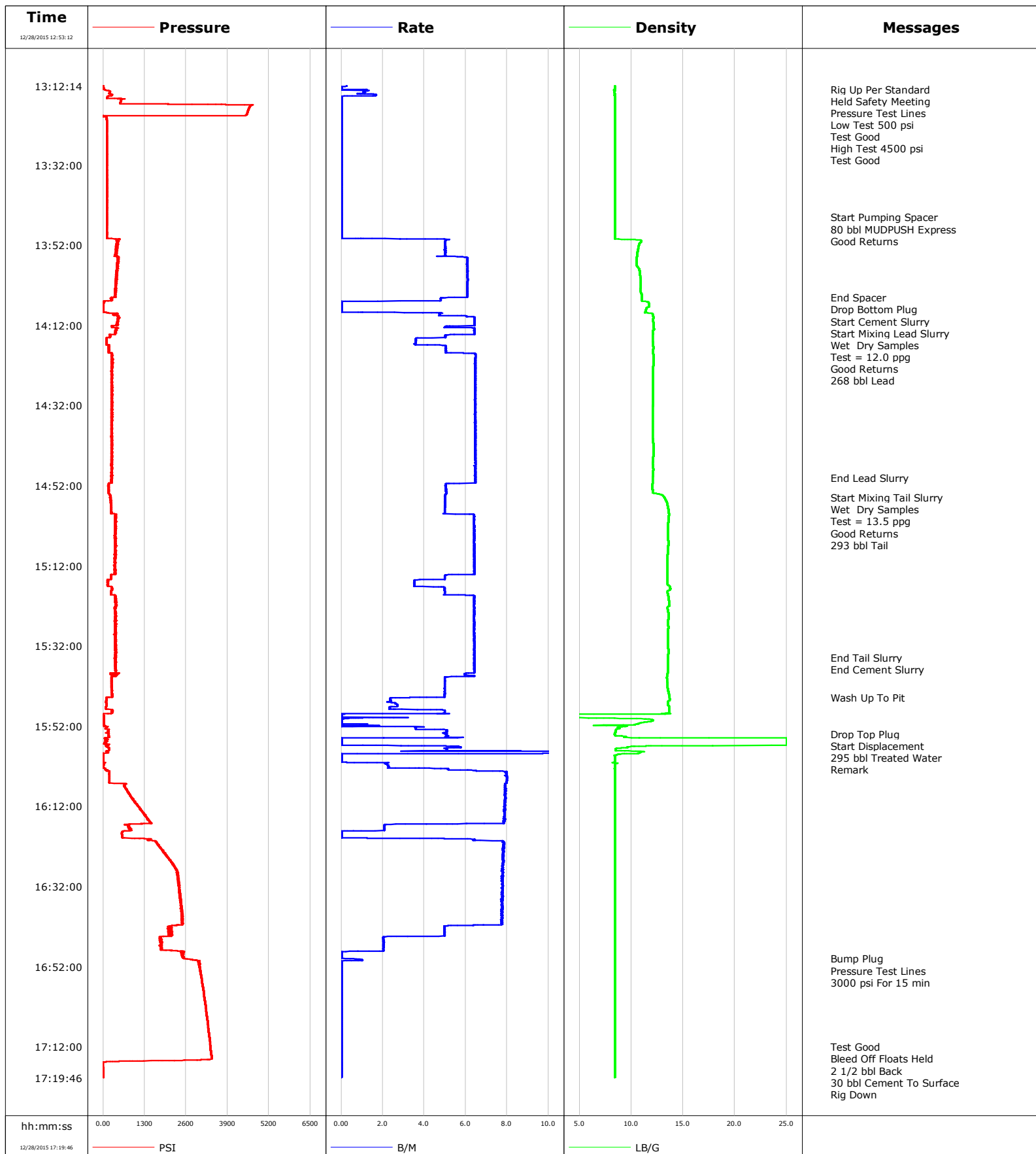


Well Alvin 1N-28HZ
Field Wattenberge
Engineer Jordan Moreland / Stacy Terry
Country

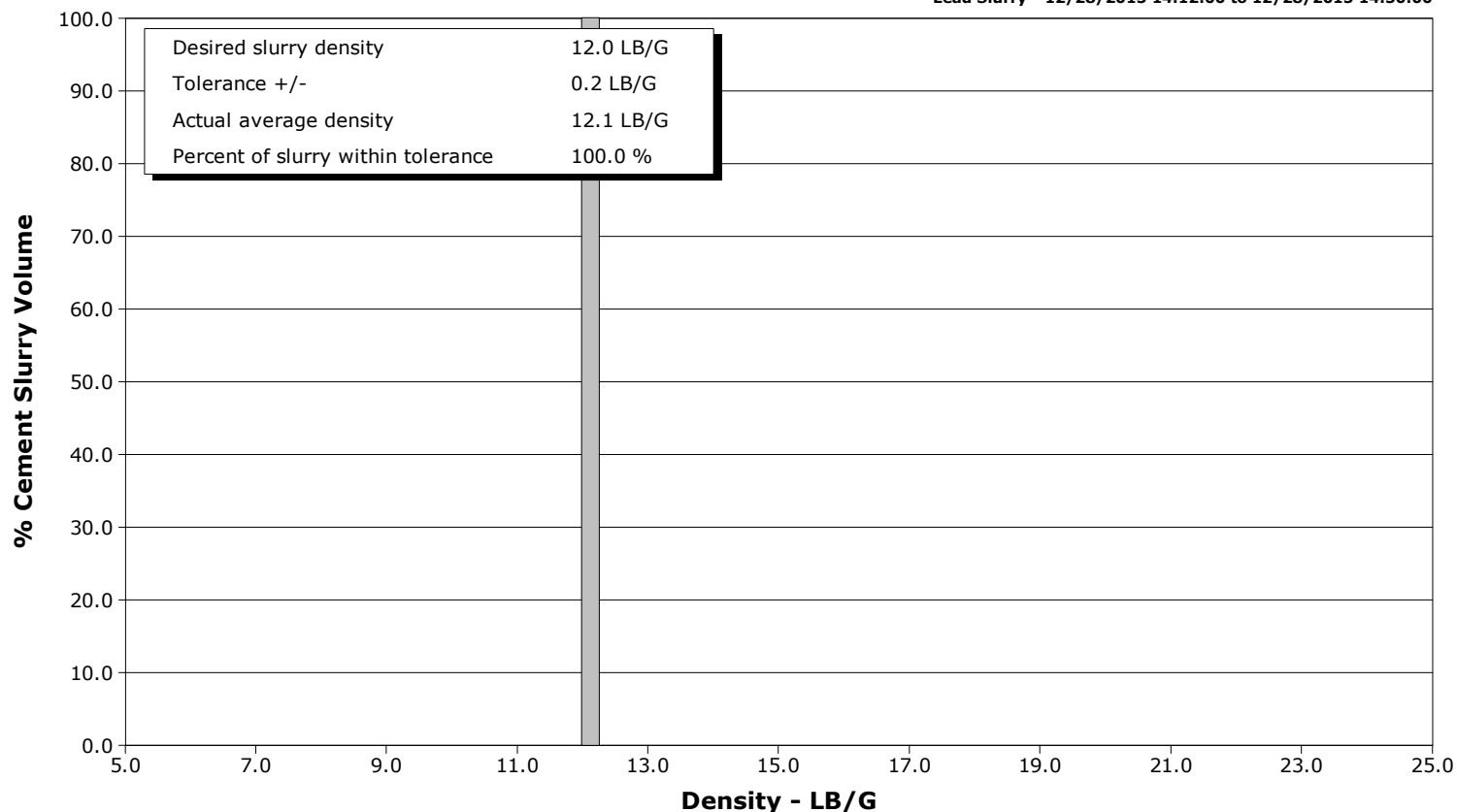
Client Anadarko
SIR No. DAXH-00582
Job Type 5 1/2 Monobore
Job Date



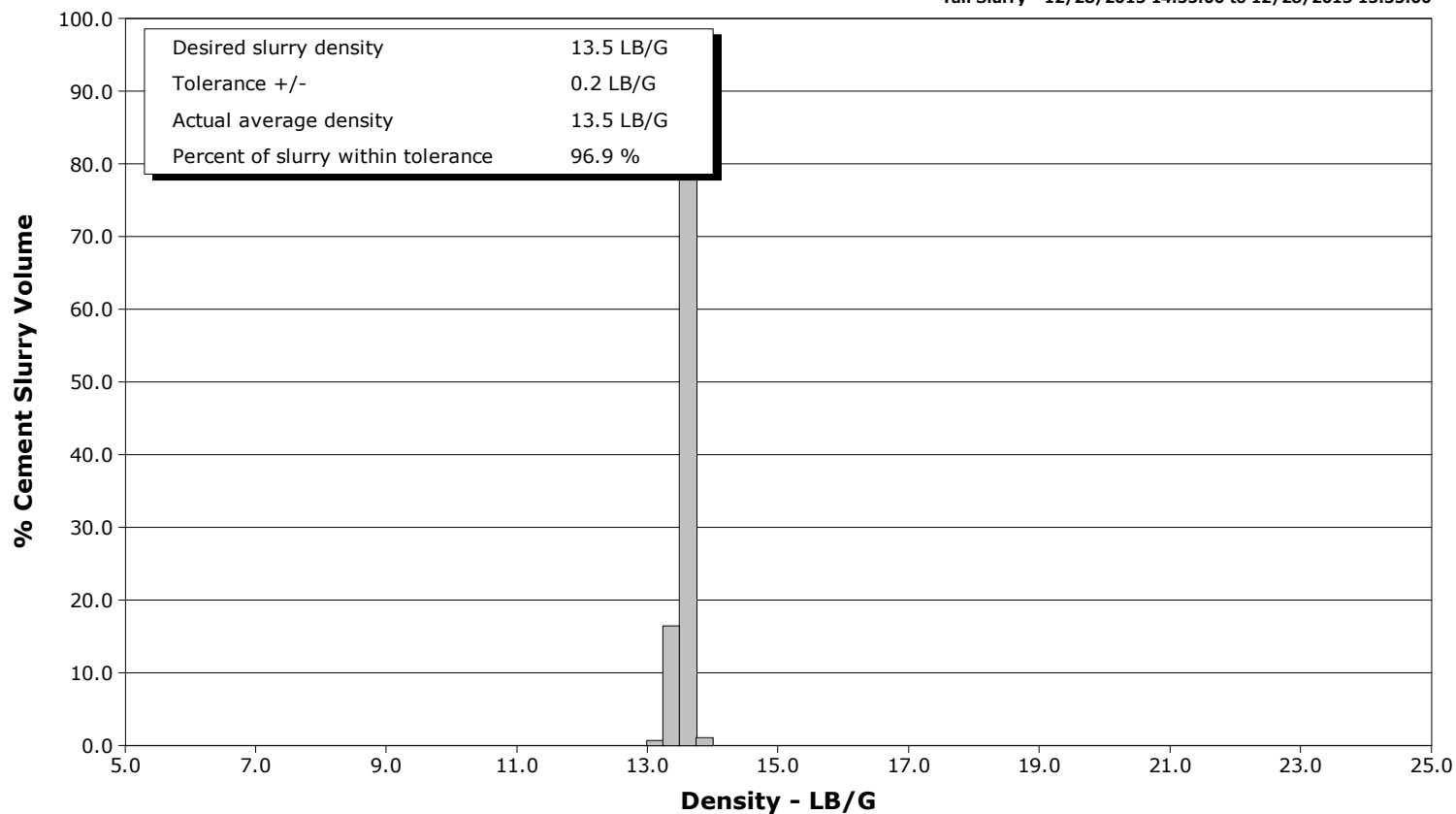
Well Alvin 1N-28HZ
Field Wattenberge
Engineer Jordan Moreland / Stacy Terry
Country

Client Anadarko
SIR No. DAXH-00582
Job Type 5 1/2 Monobore
Job Date

Lead Slurry - 12/28/2015 14:12:00 to 12/28/2015 14:50:00



Tail Slurry - 12/28/2015 14:55:00 to 12/28/2015 15:35:00



Cementing Service Report

				Customer Anadarko				Job Number DAXH-00582							
Well Alvin 1N-28HZ			Location (legal)			Schlumberger Location			Job Start Dec/28/2015						
Field Wattenberge		Formation Name/Type			Deviation deg		Bit Size 8.5 in		Well MD ft		Well TVD ft				
County Weld		State/Province Colorado			BHP psi		BHST 231 degF		BHCT 226 degF		Pore Press. Gradient lb/gal				
Well Master 0631660593		API/UWI 05123422080000													
Rig Name Xtreme 24		Drilled For Oil		Service Via Land		Casing/ Liner									
						Depth, ft		Size, in		Weight, lb/ft		Grade	Thread		
Offshore Zone		Well Class New		Well Type Development		12785.0		5.5		17.0		P110	8RD		
						0.0		0.0		0.0					
Drilling Fluid Type		Max. Density lb/gal		Plastic Viscosity cP		Tubing/Drill Pipe									
						T/D		Depth, ft		Size, in		Weight, lb/ft		Grade	Thread
Service Line Cementing		Job Type 5 1/2 Monobore													
Max. Allowed Tub. Press psi		Max. Allowed Ann. Press psi		WH Connection Double Cement head		Perforations/Open Hole									
						Top, ft		Bottom, ft		shot/ft		No. of Shots		Total Interval ft	
Service Instructions Rate And Density Checked 80 bbl MUDPUSH Express 840 sks 12.0 Lead 980 sks 13.5 Tail Displace 295 bbl Treated Water						ft		ft							
						ft		ft						Diameter in	
						ft		ft							
		Treat Down Casing		Displacement 295.0 bbl		Packer Type		Packer Depth ft							
		Tubing Vol. bbl		Casing Vol. 297.0 bbl		Annular Vol. 535.0 bbl		Openhole Vol. 992.0 bbl							
Casing/Tubing Secured <input checked="" type="checkbox"/>		1 Hole Vol. Circulated prior to Cement <input checked="" type="checkbox"/>				Casing Tools				Squeeze Job					
Lift Pressure psi						Shoe Type Float				Squeeze Type					
Pipe Rotated <input type="checkbox"/>		Pipe Reciprocated <input type="checkbox"/>				Shoe Depth 12785.0 ft				Tool Type					
No. Centralizers		Top Plugs 1		Bottom Plugs 1		Stage Tool Type				Tool Depth ft					
Cement Head Type Double						Stage Tool Depth ft				Tail Pipe Size in					
Job Scheduled For Dec/28/2015		Arrived on Location Dec/28/2015		Leave Location Dec/28/2015		Collar Type Float				Tail Pipe Depth ft					
						Collar Depth 12694.0 ft				Sqz. Total Vol. bbl					
Date	Time 24-hr clock	Treating Pressure PSI	Flow Rate B/M	Density LB/G	Volume BBL	Message									
12/28/2015	12:53:12	472	0.0	0.20	0.0										
12/28/2015	12:55:12	1	0.0	0.20	0.0										
12/28/2015	12:57:12	64	3.5	8.87	7.3										
12/28/2015	12:59:12	148	0.0	9.21	13.1										
12/28/2015	13:01:12	7	0.0	8.52	13.1										
12/28/2015	13:03:12	6	0.0	8.42	13.1										
12/28/2015	13:05:12	83	3.0	8.40	15.9										
12/28/2015	13:07:12	5	0.1	8.40	16.8										
12/28/2015	13:09:12	5	0.0	8.40	16.8										
12/28/2015	13:11:12	5	0.0	8.40	16.8										
12/28/2015	13:13:00	23	0.0	8.40	0.1	Rig Up Per Standard									
12/28/2015	13:13:12	52	1.3	8.34	0.1										
12/28/2015	13:15:12	125	0.0	8.40	2.0										
12/28/2015	13:17:12	4623	0.0	8.40	2.0										
12/28/2015	13:19:12	4512	0.0	8.40	2.0										
12/28/2015	13:21:12	117	0.0	8.40	2.0										
12/28/2015	13:23:12	121	0.0	8.41	2.0										
12/28/2015	13:25:12	118	0.0	8.41	2.0										
12/28/2015	13:27:12	116	0.0	8.41	2.0										
12/28/2015	13:29:12	116	0.0	8.41	2.0										
12/28/2015	13:31:12	123	0.0	8.41	2.0										

Well			Field	Job Start		Customer	Job Number	
Alvin 1N-28HZ			Wattenberge		Dec/28/2015		Anadarko	DAXH-00582
Date	Time 24-hr clock	Treating Pressure PSI	Flow Rate B/M	Density LB/G	Volume BBL	Message		
12/28/2015	13:35:12	122	0.0	8.41	2.0			
12/28/2015	13:37:12	123	0.0	8.41	2.0			
12/28/2015	13:39:12	125	0.0	8.41	2.0			
12/28/2015	13:41:12	124	0.0	8.41	2.0			
12/28/2015	13:43:12	124	0.0	8.41	2.0			
12/28/2015	13:45:00	124	0.0	8.41	2.0	Start Pumping Spacer		
12/28/2015	13:45:12	122	0.0	8.41	2.0			
12/28/2015	13:47:12	122	0.0	8.41	2.0			
12/28/2015	13:49:12	124	0.0	8.41	2.0			
12/28/2015	13:51:12	467	5.0	10.95	5.9			
12/28/2015	13:53:12	419	5.0	10.64	15.9			
12/28/2015	13:55:12	465	6.1	10.53	26.3			
12/28/2015	13:57:12	449	6.1	10.54	38.4			
12/28/2015	13:59:12	423	6.1	10.82	50.6			
12/28/2015	14:01:12	395	6.1	10.90	62.8			
12/28/2015	14:03:12	387	6.1	10.88	74.9			
12/28/2015	14:05:00	365	6.1	11.00	85.8	End Spacer		
12/28/2015	14:05:12	268	4.8	10.99	86.9			
12/28/2015	14:06:05	48	0.0	11.44	90.7	Drop Bottom Plug		
12/28/2015	14:07:12	7	0.0	11.73	90.7			
12/28/2015	14:09:12	411	4.7	12.05	92.5			
12/28/2015	14:10:00	482	6.4	12.15	96.9	Start Cement Slurry		
12/28/2015	14:11:12	451	6.4	12.13	104.6			
12/28/2015	14:12:00	463	6.4	12.16	109.7	Start Mixing Lead Slurry		
12/28/2015	14:13:00	415	6.4	12.19	115.6	Wet Dry Samples		
12/28/2015	14:13:12	394	6.4	12.15	116.8			
12/28/2015	14:14:00	370	6.4	12.08	122.0	Test = 12.0 ppg		
12/28/2015	14:15:00	218	5.0	12.07	127.5	Good Returns		
12/28/2015	14:15:12	111	3.7	12.07	128.4			
12/28/2015	14:16:00	97	3.6	12.07	131.3	268 bbl Lead		
12/28/2015	14:17:12	187	5.0	12.12	135.9			
12/28/2015	14:19:12	275	6.5	12.13	146.4			
12/28/2015	14:21:12	274	6.5	12.17	159.3			
12/28/2015	14:23:12	279	6.5	12.11	172.2			
12/28/2015	14:25:12	254	6.5	12.10	185.1			
12/28/2015	14:27:12	254	6.5	12.12	198.0			
12/28/2015	14:29:12	269	6.5	12.13	210.9			
12/28/2015	14:31:12	278	6.5	12.09	223.8			
12/28/2015	14:33:12	296	6.5	12.07	236.8			
12/28/2015	14:35:12	270	6.5	12.07	249.7			
12/28/2015	14:37:12	262	6.5	12.07	262.6			
12/28/2015	14:39:12	262	6.5	12.06	275.5			
12/28/2015	14:41:12	289	6.5	12.12	288.4			
12/28/2015	14:43:12	260	6.5	12.15	301.3			
12/28/2015	14:45:12	279	6.5	12.12	314.3			
12/28/2015	14:47:12	260	6.5	12.10	327.2			
12/28/2015	14:49:12	272	6.5	12.10	340.1			
12/28/2015	14:50:00	256	6.5	12.08	345.3	End Lead Slurry		
12/28/2015	14:51:12	260	6.5	12.05	353.0			
12/28/2015	14:53:12	162	5.0	12.06	363.5			
12/28/2015	14:55:00	219	5.0	13.19	372.5	Start Mixing Tail Slurry		
12/28/2015	14:55:12	222	5.0	13.23	373.5			
12/28/2015	14:56:00	260	5.0	13.39	377.5	Wet Dry Samples		
12/28/2015	14:57:00	239	5.0	13.51	382.5	Test = 13.5 ppg		

Well			Field	Job Start		Customer	Job Number	
Alvin 1N-28HZ			Wattenberge		Dec/28/2015		Anadarko	DAXH-00582
Date	Time 24-hr clock	Treating Pressure PSI	Flow Rate B/M	Density LB/G	Volume BBL	Message		
12/28/2015	14:58:00	257	5.0	13.57	387.5	Good Returns		
12/28/2015	14:59:00	281	5.0	13.62	392.5	293 bbl Tail		
12/28/2015	14:59:12	397	6.4	13.62	393.6			
12/28/2015	15:01:12	374	6.4	13.57	406.4			
12/28/2015	15:03:12	407	6.4	13.54	419.3			
12/28/2015	15:05:12	374	6.4	13.55	432.1			
12/28/2015	15:07:12	388	6.4	13.56	444.9			
12/28/2015	15:09:12	371	6.4	13.52	457.7			
12/28/2015	15:11:12	407	6.4	13.49	470.6			
12/28/2015	15:13:12	379	6.4	13.49	483.4			
12/28/2015	15:15:12	254	5.0	13.51	494.9			
12/28/2015	15:17:12	166	3.5	13.71	502.4			
12/28/2015	15:19:12	264	5.0	13.53	512.2			
12/28/2015	15:21:12	390	6.4	13.62	524.8			
12/28/2015	15:23:12	384	6.4	13.54	537.7			
12/28/2015	15:25:12	404	6.4	13.58	550.5			
12/28/2015	15:27:12	373	6.4	13.57	563.3			
12/28/2015	15:29:12	405	6.4	13.56	576.1			
12/28/2015	15:31:12	391	6.4	13.55	588.9			
12/28/2015	15:33:12	389	6.4	13.58	601.8			
12/28/2015	15:35:00	380	6.4	13.54	613.3	End Tail Slurry		
12/28/2015	15:35:12	394	6.4	13.54	614.6			
12/28/2015	15:36:00	392	6.4	13.53	619.7	End Cement Slurry		
12/28/2015	15:37:12	371	6.4	13.53	627.4			
12/28/2015	15:39:12	432	6.0	13.47	640.1			
12/28/2015	15:41:12	272	5.0	13.47	650.7			
12/28/2015	15:43:12	279	5.0	13.56	660.7			
12/28/2015	15:45:00	97	2.4	13.70	669.4	Wash Up To Pit		
12/28/2015	15:45:12	97	2.4	13.71	669.9			
12/28/2015	15:47:12	86	2.4	13.62	674.9			
12/28/2015	15:49:12	3	0.0	0.61	681.9			
12/28/2015	15:51:12	18	0.0	10.99	682.2			
12/28/2015	15:53:12	167	5.1	8.47	686.9			
12/28/2015	15:54:00	173	5.1	8.39	690.9	Drop Top Plug		
12/28/2015	15:55:00	88	0.0	25.00	695.8	Start Displacement		
12/28/2015	15:55:12	117	0.0	25.00	695.8			
12/28/2015	15:56:00	59	0.0	25.00	695.8	295 bbl Treated Water		
12/28/2015	15:57:00	142	5.1	11.46	696.2	Remark		
12/28/2015	15:57:12	128	5.7	9.69	697.3			
12/28/2015	15:59:12	4	0.0	8.58	712.0			
12/28/2015	16:01:12	40	2.2	8.32	712.2			
12/28/2015	16:03:12	118	6.5	8.42	718.8			
12/28/2015	16:05:12	191	8.0	8.40	734.6			
12/28/2015	16:07:12	681	7.9	8.41	750.5			
12/28/2015	16:09:12	844	7.9	8.41	766.3			
12/28/2015	16:11:12	1008	7.9	8.41	782.1			
12/28/2015	16:13:12	1216	7.9	8.41	797.9			
12/28/2015	16:15:12	1376	7.9	8.41	813.6			
12/28/2015	16:17:12	806	2.1	8.41	825.0			
12/28/2015	16:19:12	593	0.0	8.41	827.1			
12/28/2015	16:21:12	1664	7.8	8.41	835.2			
12/28/2015	16:23:12	1875	7.8	8.41	850.9			
12/28/2015	16:25:12	2081	7.8	8.41	866.5			
12/28/2015	16:27:12	2245	7.8	8.41	882.1			

Well			Field		Job Start		Customer		Job Number	
Alvin 1N-28HZ			Wattenberge		Dec/28/2015		Anadarko		DAXH-00582	
Date	Time 24-hr clock	Treating Pressure PSI	Flow Rate B/M	Density LB/G	Volume BBL	Message				
12/28/2015	16:31:12	2371	7.8	8.42	913.2					
12/28/2015	16:33:12	2385	7.8	8.42	928.7					
12/28/2015	16:35:12	2442	7.7	8.42	944.2					
12/28/2015	16:37:12	2444	7.8	8.42	959.7					
12/28/2015	16:39:12	2482	7.7	8.42	975.3					
12/28/2015	16:41:12	2471	7.7	8.42	990.7					
12/28/2015	16:43:12	2096	5.0	8.42	1002.2					
12/28/2015	16:45:12	1781	2.0	8.42	1010.1					
12/28/2015	16:47:12	1851	2.0	8.42	1014.2					
12/28/2015	16:49:12	2476	0.0	8.42	1016.3					
12/28/2015	16:50:00	2544	0.2	8.42	1016.3	Bump Plug				
12/28/2015	16:51:12	3023	0.0	8.42	1016.8					
12/28/2015	16:52:00	3018	0.0	8.42	1016.8	Pressure Test Lines				
12/28/2015	16:53:00	3048	0.0	8.42	1016.8	3000 psi For 15 min				
12/28/2015	16:53:12	3050	0.0	8.42	1016.8					
12/28/2015	16:55:12	3088	0.0	8.42	1016.8					
12/28/2015	16:57:12	3127	0.0	8.43	1016.8					
12/28/2015	16:59:12	3163	0.0	8.43	1016.8					
12/28/2015	17:01:12	3198	0.0	8.43	1016.8					
12/28/2015	17:03:12	3231	0.0	8.43	1016.8					
12/28/2015	17:05:12	3262	0.0	8.42	1016.8					
12/28/2015	17:07:12	3292	0.0	8.42	1016.8					
12/28/2015	17:09:12	3322	0.0	8.42	1016.8					
12/28/2015	17:11:12	3352	0.0	8.42	1016.8					
12/28/2015	17:12:00	3361	0.0	8.42	1016.8	Test Good				
12/28/2015	17:13:00	3373	0.0	8.42	1016.8	30 bbl Cement To Surface				
12/28/2015	17:13:12	3377	0.0	8.42	1016.8					
12/28/2015	17:15:12	3344	0.0	8.42	1016.8					
12/28/2015	17:17:12	0	0.0	8.42	1016.8					

Post Job Summary

Average Pump Rates, bbl/min					Volume of Fluid Injected, bbl						
Slurry	N2	Mud	Maximum Rate		Total Slurry	Mud	Spacer	N2			
Treating Pressure Summary, psi					Breakdown Fluid						
Maximum	Final 0	Average	Bump Plug to	Breakdown	Type	Volume bbl		Density lb/gal			
Avg. N2 Percent %	Designed Slurry Volume 0.0 bbl		Displacement bbl	Mix Water Temp 58 degF	Cement Circulated to Surface? <input checked="" type="checkbox"/>		Volume bbl				
					Washed Thru Perfs <input type="checkbox"/>		To ft				
Customer or Authorized Representative			Schlumberger Supervisor Jordan Moreland / Stacy Terry			Circulation Lost <input type="checkbox"/>		Job Completed <input checked="" type="checkbox"/>			
						-		-			