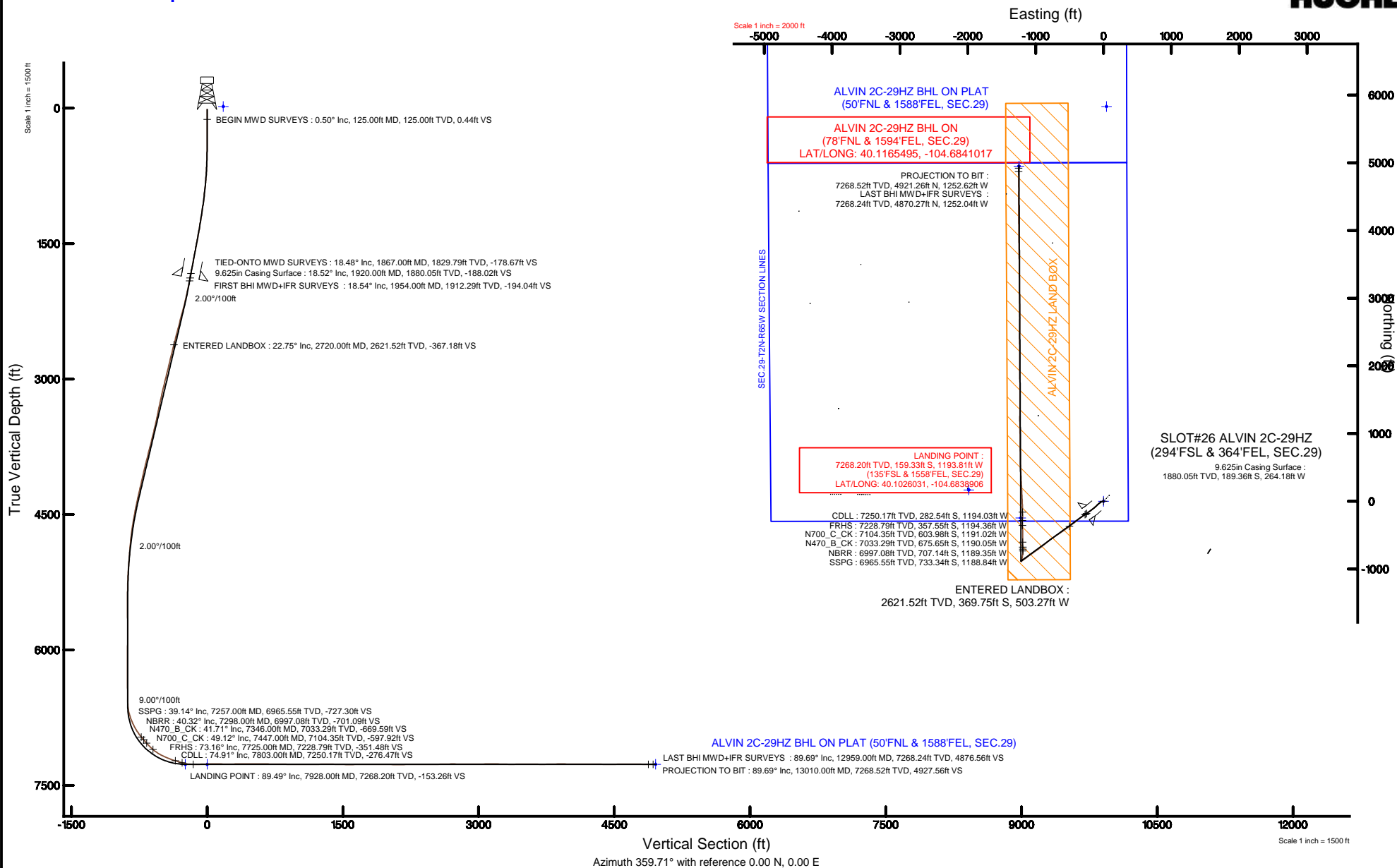


Location:	COLORADO	Slot:	SLOT#26 ALVIN 2C-29HZ (294'FSL & 364'FEL, SEC.29)
Field:	WELD COUNTY (UTM/TRUE NORTH)	Well:	ALVIN 2C-29HZ
Facility:	SEC.29-T2N-R65W	Wellbore:	ALVIN 2C-29HZ PWB

Plot reference wellpath is ALVIN 2C-29HZ PWP (REV-B.1)	
True vertical depths are referenced to XTREME 24 (16'KB) (RKB)	Grid System: NAD83 / UTM Zone 13 North, US feet
Measured depths are referenced to XTREME 24 (16'KB) (RKB)	North Reference: True north
XTREME 24 (16'KB) (RKB) to Mean Sea Level: 4925 feet	Scale: True distance
Mean Sea Level to Mud line (At Slot: SLOT#26 ALVIN 2C-29HZ (294'FSL & 364'FEL, SEC.29)): 0 feet	Depths are in feet
Coordinates are in feet referenced to Slot	Created by: amarcarr on 21/Dec/2015



REFERENCE WELLPATH IDENTIFICATION

Operator	KERR-MCGEE OIL & GAS ONSHORE LP (WA)	Slot	SLOT#26 ALVIN 2C-29HZ (294'FSL & 364'FEL, SEC.29)
Area	COLORADO	Well	ALVIN 2C-29HZ
Field	WELD COUNTY (UTM/TRUE NORTH)	Wellbore	ALVIN 2C-29HZ AWB <13010>
Facility	SEC.29-T2N-R65W		

REPORT SETUP INFORMATION

Projection System	NAD83 / UTM Zone 13 North, US feet	Software System	WellArchitect® 4.0.0
North Reference	True	User	Amarcar
Scale	0.999609	Report Generated	21/Dec/2015 at 16:48
Convergence at slot	0.21° East	Database/Source file	WA_DEN_Anadarko_Defn\ALVIN_2C-29HZ_AWB__13010_.xml

WELLPATH LOCATION

	Local coordinates		Grid coordinates		Geographic coordinates	
	North[ft]	East[ft]	Easting[US ft]	Northing[US ft]	Latitude	Longitude
Slot Location	-101.75	3562.20	1730003.61	14564416.38	40°06'10.946"N	104°40'46.643"W
Facility Reference Pt			1726442.48	14564505.77	40°06'11.954"N	104°41'32.485"W
Field Reference Pt			1698235.31	14552047.82	40°04'09.600"N	104°47'36.000"W

WELLPATH DATUM

Calculation method	Minimum curvature	XTREME 24 (16'KB) (RKB) to Facility Vertical Datum	4925.00ft
Horizontal Reference Pt	Slot	XTREME 24 (16'KB) (RKB) to Mean Sea Level	4925.00ft
Vertical Reference Pt	XTREME 24 (16'KB) (RKB)	XTREME 24 (16'KB) (RKB) to Mud Line at Slot (SLOT#26 ALVIN 2C-29HZ (294'FSL & 364'FEL, SEC.29))	4925.00ft
MD Reference Pt	XTREME 24 (16'KB) (RKB)	Section Origin	N 0.00, E 0.00 ft
Field Vertical Reference	Mean Sea Level	Section Azimuth	359.71°

REFERENCE WELLPATH IDENTIFICATION			
Operator	KERR-MCGEE OIL & GAS ONSHORE LP (WA)	Slot	SLOT#26 ALVIN 2C-29HZ (294'FSL & 364'FEL, SEC.29)
Area	COLORADO	Well	ALVIN 2C-29HZ
Field	WELD COUNTY (UTM/TRUE NORTH)	Wellbore	ALVIN 2C-29HZ AWB <13010>
Facility	SEC.29-T2N-R65W		

WELLPATH DATA (144 stations) † = interpolated/extrapolated station										
MD [ft]	Inclination [°]	Azimuth [°]	TVD [ft]	Vert Sect [ft]	North [ft]	East [ft]	Latitude	Longitude	DLS [°/100ft]	Comments
0.00†	0.000	23.100	0.00	0.00	0.00	0.00	40°06'10.946"N	104°40'46.643"W	0.00	
16.00	0.000	23.100	16.00	0.00	0.00	0.00	40°06'10.946"N	104°40'46.643"W	0.00	
125.00	0.500	23.100	125.00	0.44	0.44	0.19	40°06'10.950"N	104°40'46.641"W	0.46	BEGIN MWD SURVEYS
215.00	0.770	279.870	215.00	0.90	0.90	-0.26	40°06'10.955"N	104°40'46.646"W	1.12	
305.00	2.080	273.290	304.97	1.11	1.10	-2.48	40°06'10.957"N	104°40'46.675"W	1.46	
381.00	2.940	260.350	380.89	0.88	0.85	-5.78	40°06'10.954"N	104°40'46.717"W	1.35	
471.00	4.170	256.130	470.72	-0.26	-0.32	-11.23	40°06'10.943"N	104°40'46.788"W	1.40	
561.00	5.230	251.800	560.41	-2.29	-2.38	-18.31	40°06'10.922"N	104°40'46.879"W	1.24	
651.00	6.810	247.920	649.92	-5.53	-5.67	-27.15	40°06'10.890"N	104°40'46.992"W	1.81	
741.00	7.640	239.230	739.20	-10.55	-10.74	-37.23	40°06'10.840"N	104°40'47.122"W	1.52	
831.00	9.180	233.680	828.23	-17.81	-18.05	-48.16	40°06'10.768"N	104°40'47.263"W	1.93	
921.00	10.520	234.310	916.90	-26.79	-27.10	-60.62	40°06'10.678"N	104°40'47.423"W	1.49	
1011.00	11.290	230.980	1005.28	-37.06	-37.44	-74.14	40°06'10.576"N	104°40'47.597"W	1.11	
1102.00	11.530	224.690	1094.48	-49.07	-49.51	-87.45	40°06'10.457"N	104°40'47.768"W	1.39	
1192.00	12.460	225.100	1182.52	-62.25	-62.76	-100.66	40°06'10.326"N	104°40'47.938"W	1.04	
1282.00	13.780	229.570	1270.17	-75.98	-76.57	-115.69	40°06'10.189"N	104°40'48.132"W	1.85	
1372.00	14.930	228.120	1357.36	-90.58	-91.26	-132.49	40°06'10.044"N	104°40'48.348"W	1.34	
1552.00	17.520	232.850	1530.18	-122.23	-123.11	-171.35	40°06'09.729"N	104°40'48.848"W	1.61	
1642.00	17.670	233.350	1615.97	-138.46	-139.44	-193.11	40°06'09.568"N	104°40'49.128"W	0.24	
1732.00	18.160	234.520	1701.61	-154.64	-155.73	-215.49	40°06'09.407"N	104°40'49.416"W	0.68	
1822.00	18.310	235.260	1787.09	-170.72	-171.93	-238.53	40°06'09.247"N	104°40'49.713"W	0.31	
1867.00	18.480	236.000	1829.79	-178.67	-179.95	-250.25	40°06'09.168"N	104°40'49.863"W	0.64	TIED-ONTO MWD SURVEYS
1954.00	18.540	235.810	1912.29	-194.04	-195.43	-273.12	40°06'09.015"N	104°40'50.158"W	0.10	FIRST BHI MWD+IFR SURVEYS
2049.00	20.000	232.340	2001.97	-212.33	-213.84	-298.48	40°06'08.833"N	104°40'50.484"W	1.95	
2143.00	21.350	235.350	2089.91	-231.74	-233.40	-325.28	40°06'08.640"N	104°40'50.829"W	1.83	
2238.00	22.500	233.150	2178.04	-252.33	-254.13	-354.05	40°06'08.435"N	104°40'51.199"W	1.49	
2333.00	23.600	231.370	2265.46	-274.95	-276.90	-383.46	40°06'08.210"N	104°40'51.578"W	1.37	
2427.00	22.800	231.100	2351.86	-297.99	-300.09	-412.33	40°06'07.980"N	104°40'51.949"W	0.86	
2522.00	23.860	233.190	2439.09	-320.91	-323.16	-442.04	40°06'07.752"N	104°40'52.332"W	1.42	
2617.00	22.450	232.050	2526.43	-343.43	-345.83	-471.73	40°06'07.528"N	104°40'52.714"W	1.56	
2712.00	22.730	233.490	2614.15	-365.36	-367.91	-500.78	40°06'07.310"N	104°40'53.087"W	0.65	
2720.00†	22.749	233.462	2621.52	-367.18	-369.75	-503.27	40°06'07.292"N	104°40'53.119"W	0.28	ENTERED LANDBOX
2807.00	22.960	233.160	2701.69	-387.24	-389.93	-530.37	40°06'07.093"N	104°40'53.468"W	0.28	
2901.00	22.590	234.180	2788.37	-408.65	-411.49	-559.68	40°06'06.879"N	104°40'53.845"W	0.58	
2996.00	23.210	234.950	2875.88	-429.92	-432.92	-589.80	40°06'06.668"N	104°40'54.233"W	0.72	
3091.00	24.500	236.730	2962.76	-451.32	-454.48	-621.59	40°06'06.455"N	104°40'54.642"W	1.55	
3185.00	23.600	236.270	3048.60	-472.30	-475.62	-653.54	40°06'06.246"N	104°40'55.053"W	0.98	
3279.00	22.570	236.280	3135.07	-492.60	-496.09	-684.19	40°06'06.044"N	104°40'55.448"W	1.10	
3374.00	21.110	235.920	3223.25	-512.16	-515.79	-713.53	40°06'05.849"N	104°40'55.825"W	1.54	
3469.00	20.750	235.250	3311.98	-531.20	-534.97	-741.53	40°06'05.659"N	104°40'56.185"W	0.46	
3563.00	19.760	237.260	3400.17	-549.15	-553.06	-768.57	40°06'05.480"N	104°40'56.534"W	1.29	
3658.00	20.240	231.160	3489.45	-568.01	-572.05	-794.88	40°06'05.293"N	104°40'56.872"W	2.25	
3752.00	20.130	228.950	3577.68	-588.70	-592.87	-819.75	40°06'05.087"N	104°40'57.192"W	0.82	
3847.00	21.030	230.340	3666.62	-610.19	-614.49	-845.20	40°06'04.873"N	104°40'57.520"W	1.08	
3942.00	21.770	229.750	3755.07	-632.31	-636.75	-871.77	40°06'04.653"N	104°40'57.861"W	0.81	

REFERENCE WELLPATH IDENTIFICATION

Operator	KERR-MCGEE OIL & GAS ONSHORE LP (WA)	Slot	SLOT#26 ALVIN 2C-29HZ (294'FSL & 364'FEL, SEC.29)
Area	COLORADO	Well	ALVIN 2C-29HZ
Field	WELD COUNTY (UTM/TRUE NORTH)	Wellbore	ALVIN 2C-29HZ AWB <13010>
Facility	SEC.29-T2N-R65W		

WELLPATH DATA (144 stations) † = interpolated/extrapolated station

MD [ft]	Inclination [°]	Azimuth [°]	TVD [ft]	Vert Sect [ft]	North [ft]	East [ft]	Latitude	Longitude	DLS [°/100ft]	Comments
4036.00	22.310	231.440	3842.20	-654.56	-659.13	-899.02	40°06'04.432"N	104°40'58.212"W	0.89	
4131.00	22.280	232.880	3930.10	-676.52	-681.24	-927.48	40°06'04.214"N	104°40'58.578"W	0.58	
4226.00	22.030	234.080	4018.08	-697.70	-702.56	-956.27	40°06'04.003"N	104°40'58.949"W	0.54	
4321.00	21.590	236.150	4106.28	-717.74	-722.75	-985.22	40°06'03.803"N	104°40'59.321"W	0.93	
4415.00	22.820	234.420	4193.31	-737.83	-742.99	-1014.41	40°06'03.603"N	104°40'59.697"W	1.48	
4510.00	21.260	235.300	4281.37	-758.21	-763.52	-1043.55	40°06'03.401"N	104°41'00.072"W	1.68	
4605.00	20.030	235.040	4370.26	-777.19	-782.64	-1071.05	40°06'03.212"N	104°41'00.426"W	1.30	
4699.00	18.330	233.490	4459.04	-795.09	-800.66	-1096.12	40°06'03.033"N	104°41'00.749"W	1.89	
4794.00	15.310	231.120	4549.97	-811.74	-817.43	-1117.90	40°06'02.868"N	104°41'01.029"W	3.26	
4889.00	13.460	230.210	4641.99	-826.60	-832.38	-1136.16	40°06'02.720"N	104°41'01.264"W	1.96	
4984.00	12.520	237.650	4734.56	-839.10	-844.96	-1153.36	40°06'02.596"N	104°41'01.485"W	2.02	
5078.00	10.480	239.800	4826.67	-848.77	-854.72	-1169.35	40°06'02.499"N	104°41'01.691"W	2.22	
5173.00	8.700	239.840	4920.34	-856.65	-862.67	-1183.03	40°06'02.421"N	104°41'01.867"W	1.87	
5267.00	7.720	233.630	5013.38	-863.91	-869.99	-1194.26	40°06'02.348"N	104°41'02.011"W	1.40	
5362.00	5.590	230.700	5107.73	-870.58	-876.71	-1202.98	40°06'02.282"N	104°41'02.124"W	2.27	
5457.00	4.250	239.470	5202.38	-875.27	-881.42	-1209.60	40°06'02.235"N	104°41'02.209"W	1.61	
5552.00	2.850	241.270	5297.20	-878.17	-884.35	-1214.70	40°06'02.206"N	104°41'02.274"W	1.48	
5646.00	0.960	185.320	5391.14	-880.06	-886.26	-1216.82	40°06'02.188"N	104°41'02.302"W	2.60	
5740.00	0.720	32.720	5485.14	-880.35	-886.54	-1216.58	40°06'02.185"N	104°41'02.299"W	1.74	
5835.00	0.480	54.580	5580.14	-879.62	-885.81	-1215.93	40°06'02.192"N	104°41'02.290"W	0.34	
6024.00	0.490	75.360	5769.13	-878.97	-885.15	-1214.50	40°06'02.199"N	104°41'02.272"W	0.09	
6214.00	0.420	162.110	5959.12	-879.43	-885.60	-1213.50	40°06'02.194"N	104°41'02.259"W	0.33	
6403.00	0.400	108.100	6148.12	-880.30	-886.47	-1212.66	40°06'02.185"N	104°41'02.248"W	0.20	
6592.00	0.830	68.030	6337.11	-880.00	-886.16	-1210.77	40°06'02.189"N	104°41'02.224"W	0.31	
6782.00	1.080	61.420	6527.08	-878.64	-884.79	-1207.92	40°06'02.202"N	104°41'02.187"W	0.14	
6877.00	3.670	14.490	6622.00	-875.28	-881.42	-1206.37	40°06'02.235"N	104°41'02.167"W	3.20	
6971.00	16.490	8.860	6714.36	-859.13	-865.25	-1203.55	40°06'02.395"N	104°41'02.131"W	13.66	
7066.00	24.380	8.340	6803.31	-826.38	-832.48	-1198.62	40°06'02.719"N	104°41'02.068"W	8.31	
7160.00	31.330	8.780	6886.37	-783.02	-789.08	-1192.07	40°06'03.148"N	104°41'01.983"W	7.40	
7255.00	39.080	358.990	6963.99	-728.56	-734.60	-1188.82	40°06'03.686"N	104°41'01.941"W	10.07	
7257.00†	39.138	358.982	6965.55	-727.30	-733.34	-1188.84	40°06'03.699"N	104°41'01.942"W	2.91	SSPG
7298.00†	40.325	358.813	6997.08	-701.09	-707.14	-1189.35	40°06'03.958"N	104°41'01.948"W	2.91	NBRR
7346.00†	41.714	358.625	7033.29	-669.59	-675.65	-1190.05	40°06'04.269"N	104°41'01.957"W	2.91	N470_B_CK
7350.00	41.830	358.610	7036.27	-666.93	-672.98	-1190.12	40°06'04.295"N	104°41'01.958"W	2.91	
7444.00	48.730	359.780	7102.38	-600.18	-606.24	-1191.01	40°06'04.955"N	104°41'01.970"W	7.39	
7447.00†	49.117	359.776	7104.35	-597.92	-603.98	-1191.02	40°06'04.977"N	104°41'01.970"W	12.88	N700_C_CK
7539.00	60.970	359.680	7156.97	-522.65	-528.71	-1191.38	40°06'05.721"N	104°41'01.975"W	12.88	
7634.00	67.550	358.430	7198.20	-437.14	-443.20	-1192.82	40°06'06.566"N	104°41'01.993"W	7.03	
7725.00†	73.155	359.486	7228.79	-351.48	-357.55	-1194.36	40°06'07.412"N	104°41'02.013"W	6.26	FRHS
7728.00	73.340	359.520	7229.65	-348.60	-354.68	-1194.39	40°06'07.441"N	104°41'02.013"W	6.26	
7803.00†	74.910	1.039	7250.17	-276.47	-282.54	-1194.03	40°06'08.154"N	104°41'02.009"W	2.86	CDLL
7823.00	75.330	1.440	7255.31	-257.15	-263.22	-1193.62	40°06'08.345"N	104°41'02.003"W	2.86	
7918.00	89.170	358.660	7268.09	-163.26	-169.32	-1193.57	40°06'09.272"N	104°41'02.003"W	14.85	
7928.00†	89.488	358.636	7268.20	-153.26	-159.33	-1193.81	40°06'09.371"N	104°41'02.006"W	3.19	LANDING POINT
8013.00	92.190	358.430	7266.96	-68.30	-74.37	-1195.98	40°06'10.211"N	104°41'02.034"W	3.19	

REFERENCE WELLPATH IDENTIFICATION

Operator	KERR-MCGEE OIL & GAS ONSHORE LP (WA)	Slot	SLOT#26 ALVIN 2C-29HZ (294'FSL & 364'FEL, SEC.29)
Area	COLORADO	Well	ALVIN 2C-29HZ
Field	WELD COUNTY (UTM/TRUE NORTH)	Wellbore	ALVIN 2C-29HZ AWB <13010>
Facility	SEC.29-T2N-R65W		

WELLPATH DATA (144 stations)

MD [ft]	Inclination [°]	Azimuth [°]	TVD [ft]	Vert Sect [ft]	North [ft]	East [ft]	Latitude	Longitude	DLS [°/100ft]	Comments
8107.00	91.080	357.310	7264.28	25.61	19.52	-1199.48	40°06'11.139"N	104°41'02.079"W	1.68	
8202.00	89.010	357.400	7264.20	120.53	114.42	-1203.86	40°06'12.076"N	104°41'02.136"W	2.18	
8296.00	89.690	356.910	7265.27	214.43	208.29	-1208.52	40°06'13.004"N	104°41'02.196"W	0.89	
8391.00	90.920	357.030	7264.76	309.32	303.16	-1213.55	40°06'13.942"N	104°41'02.260"W	1.30	
8485.00	90.310	358.450	7263.75	403.25	397.08	-1217.25	40°06'14.870"N	104°41'02.308"W	1.64	
8580.00	90.060	357.020	7263.45	498.19	492.00	-1221.01	40°06'15.808"N	104°41'02.356"W	1.53	
8675.00	89.910	358.900	7263.47	593.15	586.93	-1224.39	40°06'16.746"N	104°41'02.400"W	1.99	
8770.00	88.460	359.340	7264.82	688.13	681.91	-1225.85	40°06'17.684"N	104°41'02.419"W	1.60	
8864.00	89.720	359.260	7266.32	782.11	775.89	-1227.00	40°06'18.613"N	104°41'02.434"W	1.34	
8959.00	89.080	359.120	7267.31	877.10	870.88	-1228.34	40°06'19.552"N	104°41'02.451"W	0.69	
9054.00	89.750	359.320	7268.28	972.09	965.86	-1229.63	40°06'20.490"N	104°41'02.468"W	0.74	
9149.00	90.090	358.940	7268.41	1067.09	1060.85	-1231.07	40°06'21.429"N	104°41'02.486"W	0.54	
9243.00	90.340	358.820	7268.06	1161.08	1154.83	-1232.91	40°06'22.358"N	104°41'02.510"W	0.30	
9338.00	90.830	0.560	7267.09	1256.07	1249.82	-1233.43	40°06'23.297"N	104°41'02.517"W	1.90	
9433.00	89.630	359.800	7266.71	1351.06	1344.82	-1233.13	40°06'24.235"N	104°41'02.513"W	1.50	
9527.00	88.370	0.160	7268.35	1445.04	1438.80	-1233.16	40°06'25.164"N	104°41'02.513"W	1.39	
9622.00	89.880	0.820	7269.80	1540.02	1533.78	-1232.35	40°06'26.103"N	104°41'02.503"W	1.73	
9717.00	90.220	359.980	7269.72	1635.01	1628.78	-1231.68	40°06'27.042"N	104°41'02.495"W	0.95	
9811.00	90.250	359.470	7269.33	1729.01	1722.78	-1232.14	40°06'27.970"N	104°41'02.500"W	0.54	
9906.00	90.340	358.300	7268.84	1824.00	1817.76	-1233.98	40°06'28.909"N	104°41'02.524"W	1.24	
10000.00	89.480	0.630	7268.99	1917.99	1911.74	-1234.86	40°06'29.838"N	104°41'02.536"W	2.64	
10095.00	89.720	359.850	7269.66	2012.98	2006.74	-1234.46	40°06'30.777"N	104°41'02.531"W	0.86	
10190.00	89.970	359.010	7269.91	2107.98	2101.73	-1235.41	40°06'31.715"N	104°41'02.543"W	0.92	
10284.00	90.370	0.090	7269.63	2201.98	2195.73	-1236.15	40°06'32.644"N	104°41'02.552"W	1.23	
10379.00	91.140	359.610	7268.38	2296.97	2290.72	-1236.40	40°06'33.583"N	104°41'02.556"W	0.96	
10474.00	89.320	359.380	7268.00	2391.96	2385.71	-1237.23	40°06'34.522"N	104°41'02.566"W	1.93	
10568.00	90.340	1.240	7268.28	2485.95	2479.70	-1236.72	40°06'35.450"N	104°41'02.560"W	2.26	
10663.00	91.630	1.150	7266.65	2580.91	2574.67	-1234.74	40°06'36.389"N	104°41'02.535"W	1.36	
10758.00	90.520	0.470	7264.86	2675.87	2669.64	-1233.40	40°06'37.327"N	104°41'02.517"W	1.37	
10852.00	89.170	359.060	7265.12	2769.86	2763.63	-1233.79	40°06'38.256"N	104°41'02.522"W	2.08	
10947.00	90.340	358.820	7265.52	2864.85	2858.61	-1235.54	40°06'39.195"N	104°41'02.545"W	1.26	
11041.00	89.540	359.270	7265.62	2958.85	2952.60	-1237.11	40°06'40.124"N	104°41'02.565"W	0.98	
11136.00	91.360	359.520	7264.88	3053.84	3047.59	-1238.11	40°06'41.062"N	104°41'02.578"W	1.93	
11230.00	89.940	359.520	7263.81	3147.83	3141.58	-1238.90	40°06'41.991"N	104°41'02.588"W	1.51	
11325.00	88.210	359.710	7265.34	3242.81	3236.56	-1239.54	40°06'42.930"N	104°41'02.597"W	1.83	
11420.00	89.380	359.480	7267.34	3337.79	3331.53	-1240.21	40°06'43.868"N	104°41'02.605"W	1.26	
11514.00	91.290	359.670	7266.79	3431.78	3425.52	-1240.91	40°06'44.797"N	104°41'02.614"W	2.04	
11609.00	89.970	358.650	7265.75	3526.77	3520.51	-1242.30	40°06'45.736"N	104°41'02.632"W	1.76	
11704.00	88.890	359.440	7266.69	3621.76	3615.49	-1243.88	40°06'46.674"N	104°41'02.653"W	1.41	
11798.00	90.180	359.190	7267.46	3715.75	3709.47	-1245.01	40°06'47.603"N	104°41'02.667"W	1.40	
11892.00	91.660	359.080	7265.95	3809.73	3803.45	-1246.43	40°06'48.532"N	104°41'02.686"W	1.58	
11987.00	90.240	359.360	7264.37	3904.71	3898.42	-1247.72	40°06'49.470"N	104°41'02.702"W	1.52	
12081.00	88.670	359.490	7265.27	3998.70	3992.41	-1248.66	40°06'50.399"N	104°41'02.715"W	1.68	
12176.00	89.540	359.040	7266.75	4093.69	4087.39	-1249.88	40°06'51.338"N	104°41'02.730"W	1.03	
12271.00	90.640	358.720	7266.60	4188.67	4182.37	-1251.74	40°06'52.276"N	104°41'02.754"W	1.21	

REFERENCE WELLPATH IDENTIFICATION

Operator	KERR-MCGEE OIL & GAS ONSHORE LP (WA)	Slot	SLOT#26 ALVIN 2C-29HZ (294'FSL & 364'FEL, SEC.29)
Area	COLORADO	Well	ALVIN 2C-29HZ
Field	WELD COUNTY (UTM/TRUE NORTH)	Wellbore	ALVIN 2C-29HZ AWB <13010>
Facility	SEC.29-T2N-R65W		

WELLPATH DATA (144 stations)

MD [ft]	Inclination [°]	Azimuth [°]	TVD [ft]	Vert Sect [ft]	North [ft]	East [ft]	Latitude	Longitude	DLS [°/100ft]	Comments
12366.00	89.660	359.640	7266.35	4283.67	4277.36	-1253.10	40°06'53.215"N	104°41'02.772"W	1.41	
12460.00	89.140	1.100	7267.34	4377.65	4371.35	-1252.49	40°06'54.144"N	104°41'02.764"W	1.65	
12555.00	90.280	0.720	7267.82	4472.63	4466.33	-1250.98	40°06'55.083"N	104°41'02.745"W	1.26	
12650.00	91.450	0.390	7266.38	4567.61	4561.32	-1250.06	40°06'56.021"N	104°41'02.733"W	1.28	
12745.00	90.060	359.630	7265.13	4662.59	4656.31	-1250.05	40°06'56.960"N	104°41'02.733"W	1.67	
12840.00	88.520	359.420	7266.31	4757.58	4751.29	-1250.83	40°06'57.899"N	104°41'02.743"W	1.64	
12935.00	89.380	359.430	7268.05	4852.57	4846.27	-1251.79	40°06'58.837"N	104°41'02.755"W	0.91	
12959.00	89.690	359.350	7268.24	4876.56	4870.27	-1252.04	40°06'59.074"N	104°41'02.759"W	1.33	LAST BHI MWD+IFR SURVEYS
13010.00	89.690	359.350	7268.52	4927.56	4921.26	-1252.62	40°06'59.578"N	104°41'02.766"W	0.00	PROJECTION TO BIT

HOLE & CASING SECTIONS - Ref Wellbore: ALVIN 2C-29HZ AWB <13010> Ref Wellpath: ALVIN 2C-29HZ AWP

String/Diameter	Start MD [ft]	End MD [ft]	Interval [ft]	Start TVD [ft]	End TVD [ft]	Start N/S [ft]	Start E/W [ft]	End N/S [ft]	End E/W [ft]
13.5in Open Hole	16.00	1930.00	1914.00	16.00	1889.53	0.00	0.00	-191.15	-266.81
9.625in Casing Surface	16.00	1920.00	1904.00	16.00	1880.05	0.00	0.00	-189.36	-264.18
8.5in Open Hole	1930.00	13010.00	11080.00	1889.53	7268.52	-191.15	-266.81	4921.26	-1252.62

TARGETS

Name	TVD [ft]	North [ft]	East [ft]	Grid East [US ft]	Grid North [US ft]	Latitude	Longitude	Shape
SEC.20-T2N-R65W SECTION LINES	-18.00	9929.45	-2061.15	1727907.53	14574334.44	40°07'49.069"N	104°41'13.178"W	polygon
SEC.29-T2N-R65W SECTION LINES	-18.00	168.36	-1986.13	1728017.66	14564577.53	40°06'12.609"N	104°41'12.203"W	polygon
ALVIN 2C-29HZ BHL ON PLAT (50'FNL & 1588'FEL, SEC.29)	7268.00	4949.67	-1246.24	1728740.05	14569359.59	40°06'59.859"N	104°41'02.684"W	point
ALVIN 2C-29HZ HEEL (47'FSL & 1584'FEL, SEC.29)	7268.00	-246.58	-1219.84	1728785.14	14564165.51	40°06'08.509"N	104°41'02.341"W	point
ALVIN 2C-29HZ LAND BOX	7268.00	0.00	0.00	1730003.61	14564416.38	40°06'10.946"N	104°40'46.643"W	polygon

WELLPATH COMPOSITION - Ref Wellbore: ALVIN 2C-29HZ AWB <13010> Ref Wellpath: ALVIN 2C-29HZ AWP

Start MD [ft]	End MD [ft]	Positional Uncertainty Model	Log Name/Comment	Wellbore
16.00	1867.00	Custom APC_ISCWSA REV 2 MWD	SDI MWD SURVEYS 13.5" HOLE <125-1867>	ALVIN 2C-29HZ AWB <13010>
1867.00	12959.00	Custom APC_ISCWSA REV 2 MWD+IFR1+SC (approximation)	BHI MWD+IFR SURVEYS 8.5" <1954-12959>	ALVIN 2C-29HZ AWB <13010>
12959.00	13010.00	Blind Drilling (std)	Projection to bit	ALVIN 2C-29HZ AWB <13010>

REFERENCE WELLPATH IDENTIFICATION

Operator	KERR-MCGEE OIL & GAS ONSHORE LP (WA)	Slot	SLOT#26 ALVIN 2C-29HZ (294'FSL & 364'FEL, SEC.29)
Area	COLORADO	Well	ALVIN 2C-29HZ
Field	WELD COUNTY (UTM/TRUE NORTH)	Wellbore	ALVIN 2C-29HZ AWB <13010>
Facility	SEC.29-T2N-R65W		

WELLPATH COMMENTS

MD [ft]	Inclination [°]	Azimuth [°]	TVD [ft]	Comment
125.00	0.500	23.100	125.00	BEGIN MWD SURVEYS
1867.00	18.480	236.000	1829.79	TIED-ONTO MWD SURVEYS
1954.00	18.540	235.810	1912.29	FIRST BHI MWD+IFR SURVEYS
2720.00	22.749	233.462	2621.52	ENTERED LANDBOX
7257.00	39.138	358.982	6965.55	SSPG
7298.00	40.325	358.813	6997.08	NBRR
7346.00	41.714	358.625	7033.29	N470_B_CK
7447.00	49.117	359.776	7104.35	N700_C_CK
7725.00	73.155	359.486	7228.79	FRHS
7803.00	74.910	1.039	7250.17	CDLL
7928.00	89.488	358.636	7268.20	LANDING POINT
12959.00	89.690	359.350	7268.24	LAST BHI MWD+IFR SURVEYS
13010.00	89.690	359.350	7268.52	PROJECTION TO BIT