

17-Feb-2016
IGRF Model [1900.0-2020.0] Dip: 66.91 deg Field: 52556.0 nT
Lat: N40 22 25.4496 Long: W104 28 40.4004 Elev: 5474.00 ft
Magnetic North is 8.20 deg East of TRUE North
To correct azimuth from Magnetic to TRUE add 8.20 deg

Great Western Operating Company, LLC

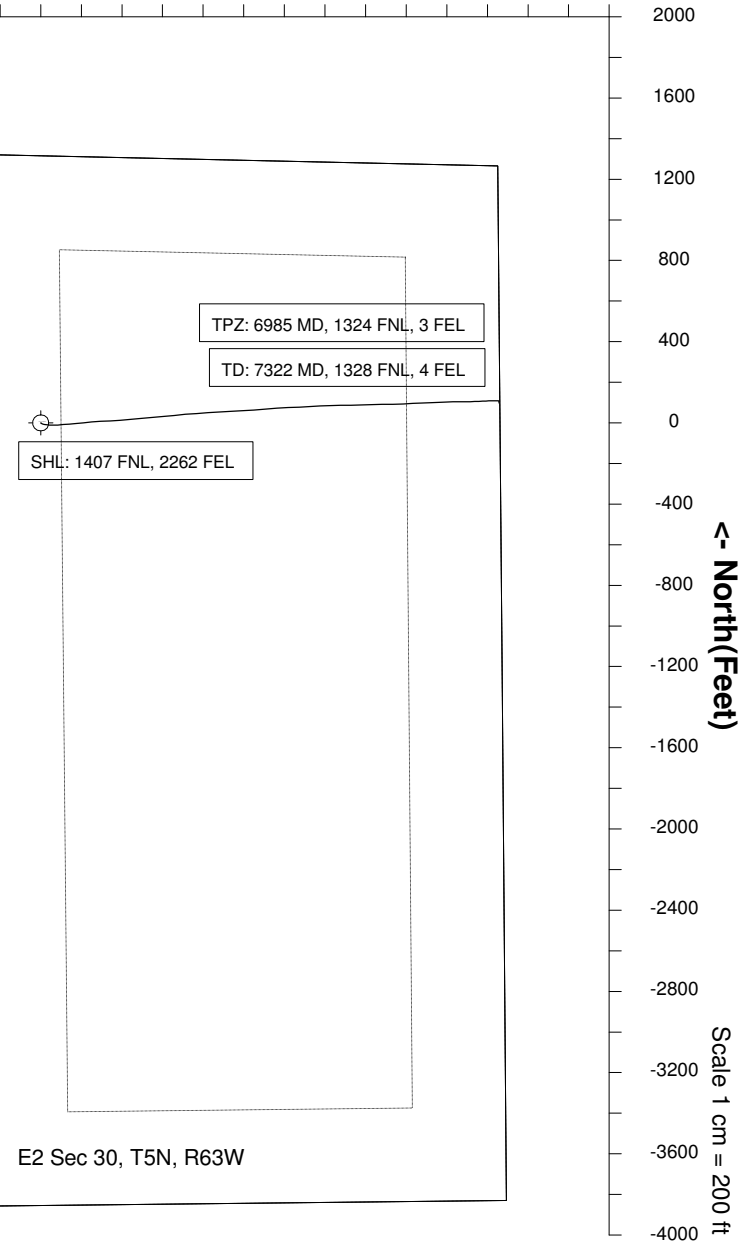
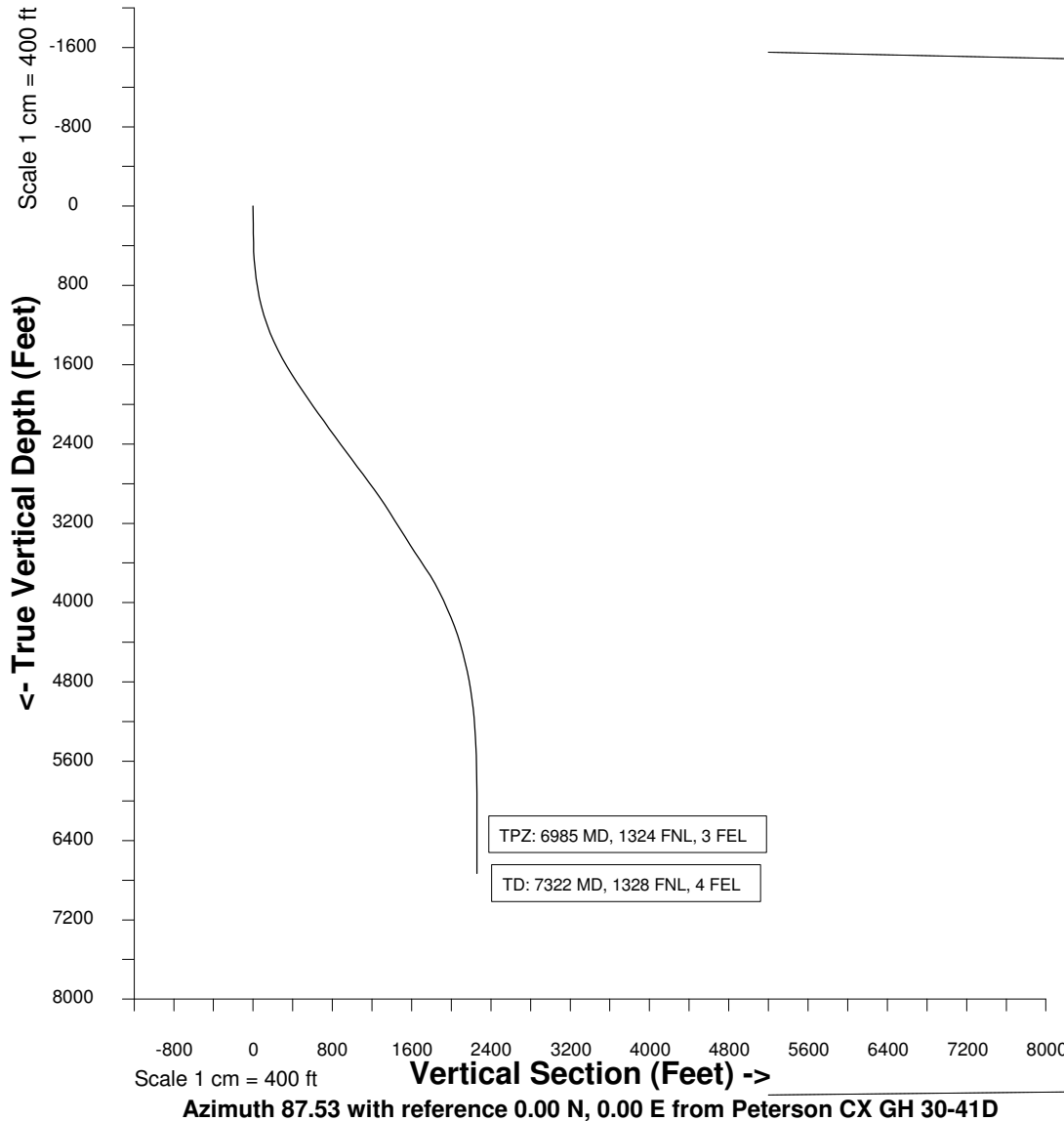
Location	Colorado	Slot	Peterson CX GH 30-41D
Field	Wattenburg	Well	Peterson CX GH 30-41D
Installation	Peterson	Wellbore	Peterson CX GH 30-41D (AWB)

Created by	admin
Date plotted	29-Feb-2016
Plot reference is Peterson CX GH 30-41D (AWB).	
Ref wellpath is Peterson CX GH 30-41D (AWP#1).	
Coordinates are in Feet reference Peterson CX GH 30-41D.	
True Vertical Depths are reference Rig Datum.	
Measured Depths are reference Rig Datum.	
Rig Datum: Actual Datum #1	
Rig Datum to Mean Sea Level: 5474.00 ft.	
Plot North is aligned to TRUE North.	

Scale 1 cm = 200 ft

<- West (Feet) : East (Feet) ->

-2800 -2400 -2000 -1600 -1200 -800 -400 0 400 800 1200 1600 2000 2400 2800



[illegible]