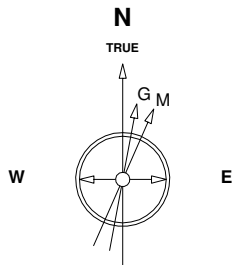


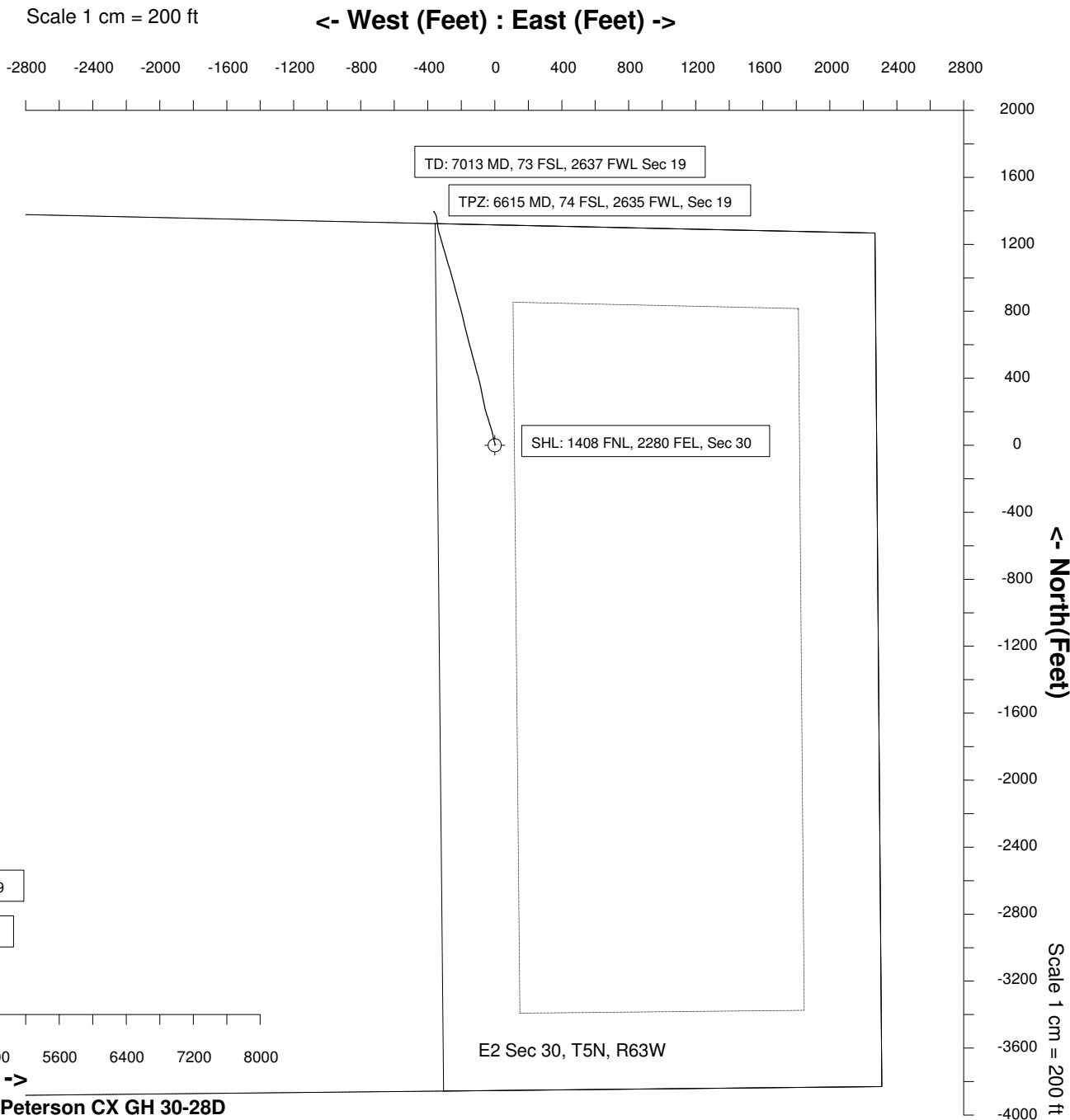
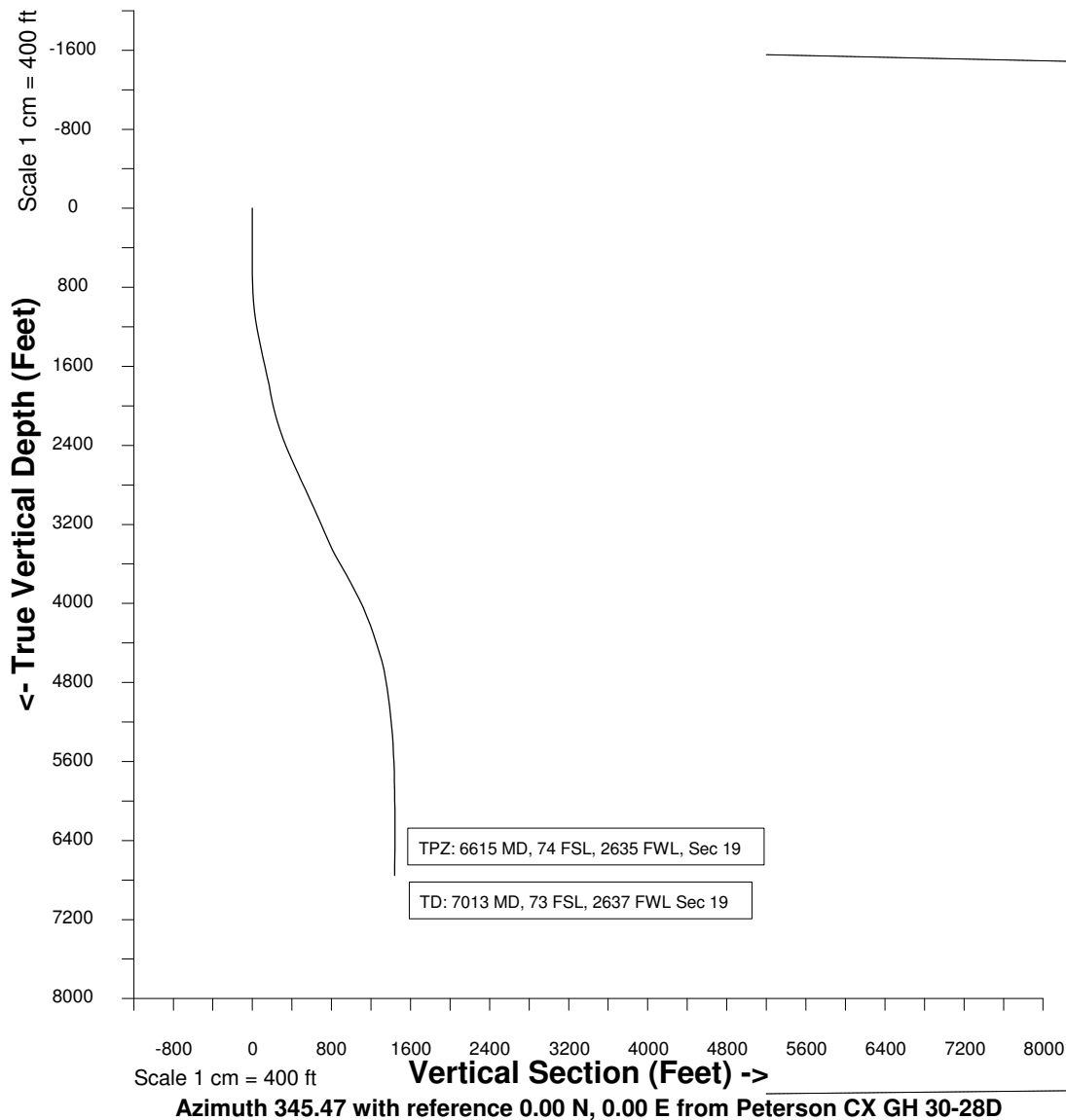
# Great Western Operating Company, LLC

<b>Location</b>	Colorado	<b>Slot</b>	Peterson CX GH 30-28D
<b>Field</b>	Wattenburg	<b>Well</b>	Peterson CX GH 30-28D
<b>Installation</b>	Peterson	<b>Wellbore</b>	Peterson CX GH 30-28D (AWB)

Created by admin  
Date plotted 29-Feb-2016  
Plot reference is Peterson CX GH 30-28D (AWB).  
Ref wellpath is Peterson CX GH 30-28D (AWP#1).  
Coordinates are in Feet reference Peterson CX GH 30-28D.  
True Vertical Depths are reference Rig Datum.  
Measured Depths are reference Rig Datum.  
Rig Datum: Actual Datum #1  
Rig Datum to Mean Sea Level: 5474.00 ft.  
Plot North is aligned to TRUE North.



17-Feb-2016  
IGRF Model [1900.0-2020.0] Dip: 66.91 deg Field: 52556.0 nT  
Lat: N40 22 25.4496 Long: W104 28 40.4004 Elev: 5474.00 ft  
Magnetic North is 8.20 deg East of TRUE North  
To correct azimuth from Magnetic to TRUE add 8.20 deg



Surveys			
N/S	E/W	VS	TVD
-0.23	0.58	-0.37	120.00
-0.25	1.21	-0.54	213.00
0.01	1.61	-0.38	304.99
0.14	1.98	-0.35	394.99
0.30	2.22	-0.25	485.99
0.77	2.40	0.16	603.99
1.13	2.34	0.53	667.99
2.74	2.21	2.11	761.97
6.43	1.82	5.79	856.90
12.42	0.46	11.93	950.70
21.66	-2.15	21.53	1045.20
34.01	-5.52	34.33	1139.33
48.64	-8.54	49.25	1232.14
66.18	-12.34	67.19	1325.42
85.22	-17.69	86.96	1471.31
104.83	-23.86	107.49	1510.06
124.78	-30.04	128.34	1602.74
144.34	-35.66	148.67	1694.51
163.19	-41.27	168.33	1787.45
180.30	-46.89	186.30	1879.71
197.15	-52.30	203.95	1972.02
217.43	-57.65	224.92	2062.64
242.31	-63.07	250.37	2155.16
270.56	-68.69	279.15	2244.63
302.27	-75.06	311.44	2333.95
335.81	-81.72	345.60	2422.58
371.81	-89.00	382.29	2510.18
409.65	-96.45	421.29	2596.81
447.91	-109.31	461.04	2683.08
485.92	-120.07	500.53	2768.38
524.21	-130.51	540.21	2854.69
562.75	-140.37	579.99	2940.96
600.99	-150.12	619.46	3027.37
638.46	-159.74	658.14	3113.04
675.85	-169.37	696.75	3198.75
712.71	-178.74	734.78	3285.80
748.30	-187.15	771.35	3372.39
787.53	-196.80	811.74	3461.67
830.36	-208.12	856.04	3545.69
875.30	-220.07	902.54	3627.38
920.78	-232.18	949.60	3709.90
965.19	-243.91	995.53	3791.91
1008.78	-255.79	1040.70	3875.48
1049.96	-267.81	1083.58	3960.23
1087.70	-279.49	1123.02	4045.53
1122.83	-290.21	1159.71	4133.13
1155.11	-299.59	1193.30	4220.91
1185.94	-308.24	1225.31	4310.35
1214.44	-316.19	1254.89	4399.57
1241.55	-324.14	1283.12	4490.27
1266.84	-331.52	1309.44	4581.54
1287.52	-336.55	1330.73	4673.08
1304.20	-339.25	1347.56	4766.56
1319.18	-341.18	1362.56	4859.34
1333.06	-343.18	1376.51	4954.31
1344.93	-345.10	1388.49	5047.53
1355.43	-346.73	1399.06	5142.94
1364.77	-348.14	1408.47	5238.47
1372.18	-350.27	1416.17	5333.16
1377.96	-352.96	1422.44	5427.94
1383.16	-355.52	1428.10	5522.77
1386.81	-357.75	1432.19	5613.66
1389.40	-359.76	1435.19	5707.61
1391.55	-361.45	1437.69	5802.57
1393.09	-362.68	1439.48	5896.55
1394.36	-363.59	1440.93	5991.53
1395.33	-364.05	1441.99	6086.53
1395.93	-363.98	1442.55	6180.52
1396.29	-363.67	1442.83	6275.52
1396.32	-363.11	1442.72	6369.52
1395.94	-362.46	1442.20	6464.52
1394.85	-361.73	1440.95	6563.51
1394.61	-361.55	1440.68	6702.51
1394.35	-361.31	1440.37	6752.51
#VALUE!	#VALUE!	#VALUE!	#VALUE!
#VALUE!	#VALUE!	#VALUE!	#VALUE!
#VALUE!	#VALUE!	#VALUE!	#VALUE!
#VALUE!	#VALUE!	#VALUE!	#VALUE!