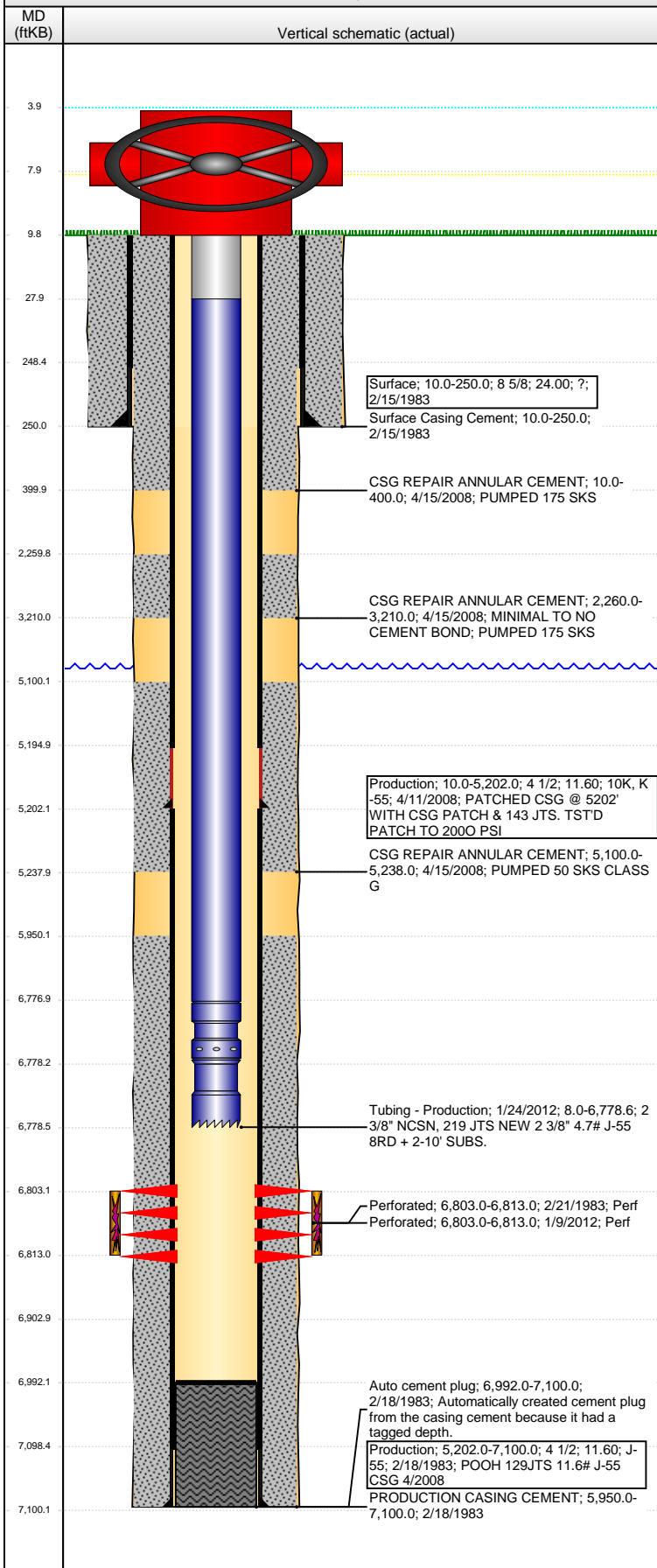


Well Name: WELD 02

VERTICAL - ORIGINAL HOLE, 2/29/2016 10:21:32 AM



Well Header

API	Business Unit	District	Well Config
05-123-10897	DJ BASIN	15	VERTICAL
Original KB Elevation (ft)	KB - GL / MSL (ftKB)	Spud Date	P & A Date
4,708.00	10.00	2/15/1983	
Comment			

Directions To Well

RD 55 & RD 48, E 0.2, N 0.2, NE 0.2 INTO

Congressional Location

Quarter 1	Quarter 2	Quarter 3	Quarter 4	Section	Township	Twship N...	Range	Rng E/W Dir
		NE	SW	3	4	N	64	W

Bottom Hole Location

North-South Distance (ft)	From N or S Line	East-West Distance (ft)	From E or W Line

Plug Back Total Depths

Date	Depth (ftKB)	Method	Com
2/18/1983	6,992.0	CASING TALLY	LATCH DOWN COLLAR
4/7/2008	6,936.0	TAG	TAGGED FILL W/18.68" IN ON JT 215, 122.97" OF...
4/7/2008	6,754.6	TBG TALLY	SET RBP @ 6754.63" W/209 JTS & 2 SKS SAND O...
4/17/2008	6,942.0	TBG TALLY	C/O DN TO 6941.99" WITH 215 JTS ALL IN @ TOP...
1/6/2012	6,952.7	TBG TALLY	C/O DN TO 6,952.68" KB W/214 JTS 8" OUT
1/24/2012	6,992.0	TBG TALLY	LATCH DOWN COLLAR; C/O AFTER REFRAC.

Wellbore Sections

Section Des	Size (in)	Act Top, MD (ftKB)	Act Btm, MD (ftKB)
SURFACE	12 1/4	10.0	250.0
PRODUCTION	7 7/8	250.0	7,100.0

Zone Statuses

Zone Name	Status Date	Status	Fluid Type	Job	Prod Method
CODELL	3/3/1983	PR	Gas	DRILLING/CO...	
CODELL	5/8/2008	PR	Gas	CASING REPA...	
CODELL	2/2/2012	PR	Gas	RE-FRAC, 1/5/...	

Casing Strings

Surface, 250.0ftKB

Casing Description	Run Date	OD (in)	Wt/Len (l...	Grade	Top, MD (ft...	MD (ftKB)
Surface	2/15/1983	8 5/8	24.00	?	10.0	250.0

Production, 5,202.0ftKB

Casing Description	Run Date	OD (in)	Wt/Len (l...	Grade	Top, MD (ft...	MD (ftKB)
Production	4/11/2008	4 1/2	11.60	K-55	10.0	5,202.0

Production, 7,100.0ftKB

Casing Description	Run Date	OD (in)	Wt/Len (l...	Grade	Top, MD (ft...	MD (ftKB)
Production	2/18/1983	4 1/2	11.60	J-55	10.0	7,100.0

Cement

Description	Top Depth (ftKB)	Bottom Depth (ftKB)
Surface Casing Cement	10.0	250.0
PRODUCTION CASING CEMENT	5,950.0	7,100.0
CSG REPAIR ANNULAR CEMENT	10.0	400.0
CSG REPAIR ANNULAR CEMENT	2,260.0	3,210.0
CSG REPAIR ANNULAR CEMENT	5,100.0	5,238.0

Tubing Strings

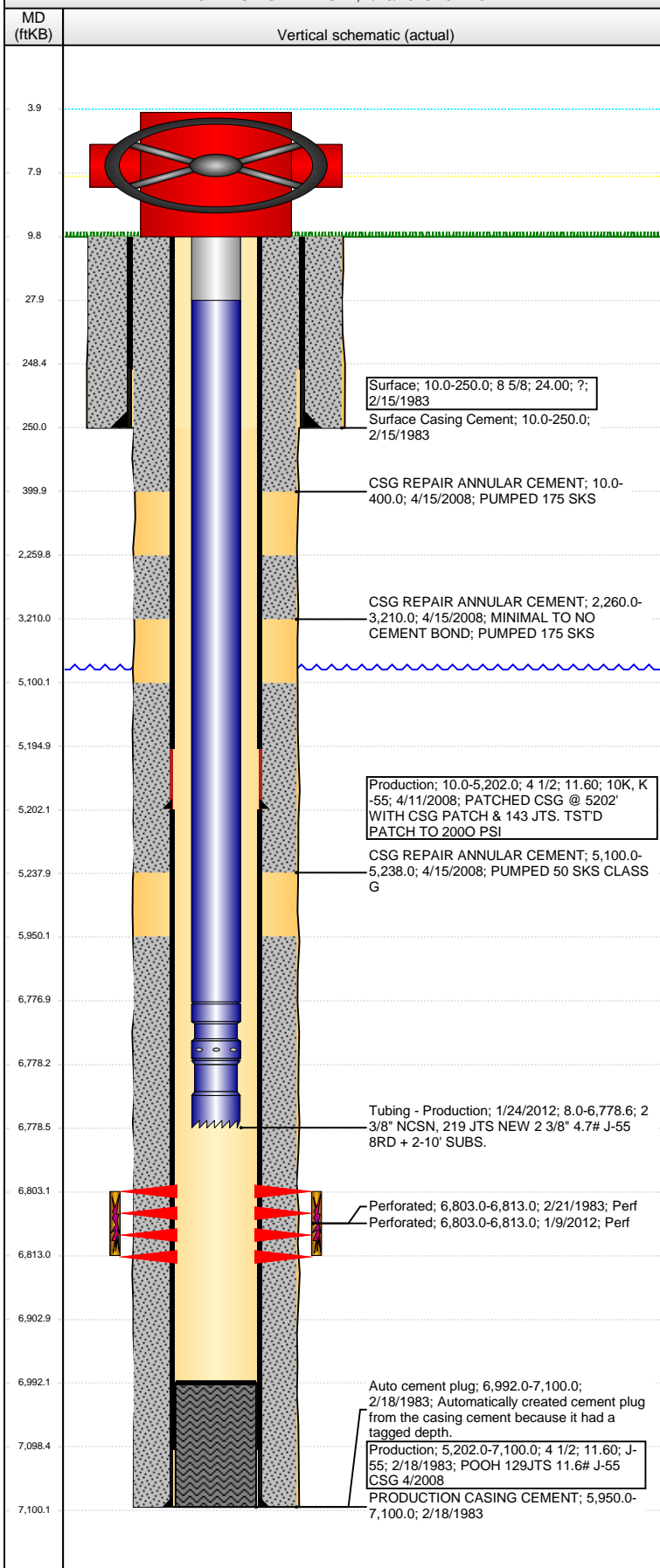
Tubing Description	Run Date	String...	ID (in)	Wt (lb/ft)	Grade	Len (ft)	Set De...
Tubing - Production	8/9/1990	2 3/8	1.995	4.70	J-55	6,773.00	
Tubing - Production	4/17/2008	2 3/8	1.995	4.60	J-55	6,782.05	
Tubing - Frac string	1/9/2012	2 7/8	2.441	6.50	N-80	6,731.14	
Tubing - Production	1/24/2012	2 3/8	1.995	4.70	J-55	6,770.60	

Tubing Components

Item Des	OD (in)	Wt (lb/ft)	Grade	Jts	Len (ft)	Btm (ftKB)	Btm (TVD) (ftKB)
Tubing Pup Joint	2 3/8	4.70	J-55	2	20.00	28.0	

Well Name: WELD 02

VERTICAL - ORIGINAL HOLE, 2/29/2016 10:21:34 AM



Tubing Components							
Item Des	OD (in)	Wt (lb/ft)	Grade	Jts	Len (ft)	Btm (ftKB)	Btm (TVD) (ftKB)
EUE 8rd Tubing	2 3/8	4.70	J-55	219	6,748.95	6,776.9	
Seating Nipple	2 3/8	5.40	J-55	1	1.20	6,778.1	
Notched collar	2 3/8		J-55	1	0.45	6,778.6	

Perforation Data					
Zone	Bnch/St g	Entered Shot Total	Top (ftKB)	Btm (ftKB)	Date
CODELL, ORIGINAL HOLE		30	6,803.00	6,813.00	2/21/1983
CODELL, ORIGINAL HOLE		40	6,803.00	6,813.00	1/9/2012

Stimulations & Treatments		
Date	Zone	Primary Job Type
2/23/1983	CODELL, ORIGINAL HOLE	DRILLING/COMPLETION - ORIGINAL
Technical Result	Tech Result Details	Tech Result Note

Comment			
Date	Zone	Primary Job Type	
1/12/2012	CODELL, ORIGINAL HOLE	RE-FRAC	
Technical Result	Tech Result Details	Tech Result Note	
Success	According to Plan		

Comment
 LOADED TUBING WITH 23BBL OF TREATED WATER PUMPED AN ADDITIONAL 8BBL AND PRESSURED UP TO 3800 PSI TO TEST PACKER. PACKER HELD. BREAKDOWN - 3816@3.9. PUMPED 105BBL OF LINEAR GEL BEFORE GETTING ISIP AND 5SIP. ISIP - 2502. 5SIP - 1172. 5SIP<1500, RAISED RATE TO 18BPM. FINAL ISIP - 3289, FINAL 5SIP - 2590, AVG RATE - 18.8, AVG PRESS - 5036, AVG VISC - 23, AVG PH - 10.2, AVG TEMP - 71, MAX RATE - 18.9, MAX PRESS - 5544.

Other In Hole				
Run Date	Des	OD (in)	Top (ftKB)	Btm (ftKB)

Logs			
Date	Type	Top, MD (ftKB)	Btm, MD (ftKB)
4/8/2008	CBL/CCL/GR	5,780.0	6,728.0
4/10/2008	Collar Locator	0.0	260.0
4/16/2008	CBL/CCL/GR	0.0	6,106.0
1/9/2012	CBL/CCL/GR	4,950.0	6,932.0