



# TEMPERATURE LOG

## CCL

Company **WPX ENERGY**

Well

FEDERAL RU 32-8

Field **RULISON**

County **GARFIELD** State **COLORADO**

Location:	API #:	05 - 045 - 22797	Other Services
-----------	--------	------------------	----------------

LAT: 39.465424  
LONG: -107.800912

SEC	8	TWP	7s	RGE	93w
-----	---	-----	----	-----	-----

Permanent Datum	G.L.	Elevation	7736'	K.B. 7760'
Log Measured From	K.B.	Ft. Above PD	24'	D.F.
Drilling Measured From	K.B.			G.L. 7736'

Date	01 - 05 - 2016
------	----------------

Run Number	ONE
------------	-----

Depth Driller	10340
---------------	-------

Present Depth Driller	N/A
-----------------------	-----

Depth Logger	10305
--------------	-------

Bottom Logged Interval	10305
------------------------	-------

Top Log Interval	SURFACE
------------------	---------

Fluid Level	SURFAC
-------------	--------

Type Fluid	WATER
------------	-------

max. Recorded temp.	186 DEG
---------------------	---------

Estimated Cement 10p	3043
----------------------	------

Equipment Number	210
------------------	-----

Location	Grand
----------	-------

Recollected by	INGRAM
----------------	--------

Witnessed by	MR. LE
Dorothy Beard	

Run Number	Borehole Record		Size	Casing Record		To
	Bit	From		From	To	
1						
2						
3						
4						
5						
6						
7						
8						
9						
10						
11						
12						
13						
14						
15						
16						
17						
18						
19						
20						
21						
22						
23						
24						
25						
26						
27						
28						
29						
30						
31						
32						
33						
34						
35						
36						
37						
38						
39						
40						
41						
42						
43						
44						
45						
46						
47						
48						
49						
50						
51						
52						
53						
54						
55						
56						
57						
58						
59						
60						
61						
62						
63						
64						
65						
66						
67						
68						
69						
70						
71						
72						
73						
74						
75						
76						
77						
78						
79						
80						
81						
82						
83						
84						
85						
86						
87						
88						
89						

<<< Fold Here >>>

All interpretations are opinions based on inferences from electrical or other measurements and we cannot and do not guarantee the accuracy or correctness of any interpretation, and we shall not, except in the case of gross or willful negligence on our part, be liable or responsible for any loss, costs, damages, or expenses incurred or sustained by anyone resulting from any interpretation made by any of our officers, agents or employees. These interpretations are also subject to our general terms and conditions set out in our current Price Schedule.

WARRIOR 7.0 SOFTWARE - Comments

**NOTE: LOG WAS DEPTH CORRELATED USING KB OF 24'**

**SHORT JOINT: 6320' TO 6343'**

MAIN PASS 5" = 100'  
CSG PSI = STATIC

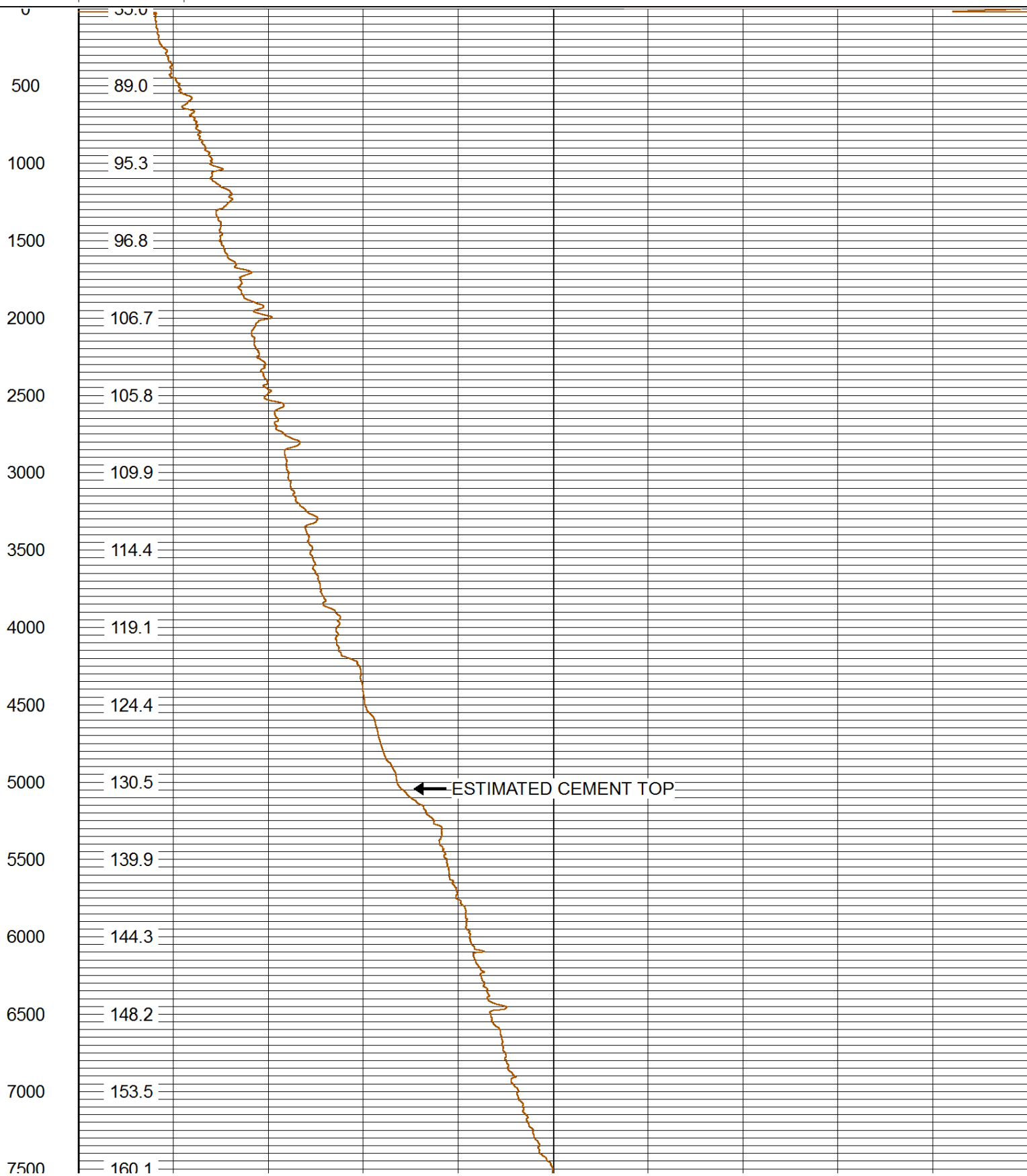


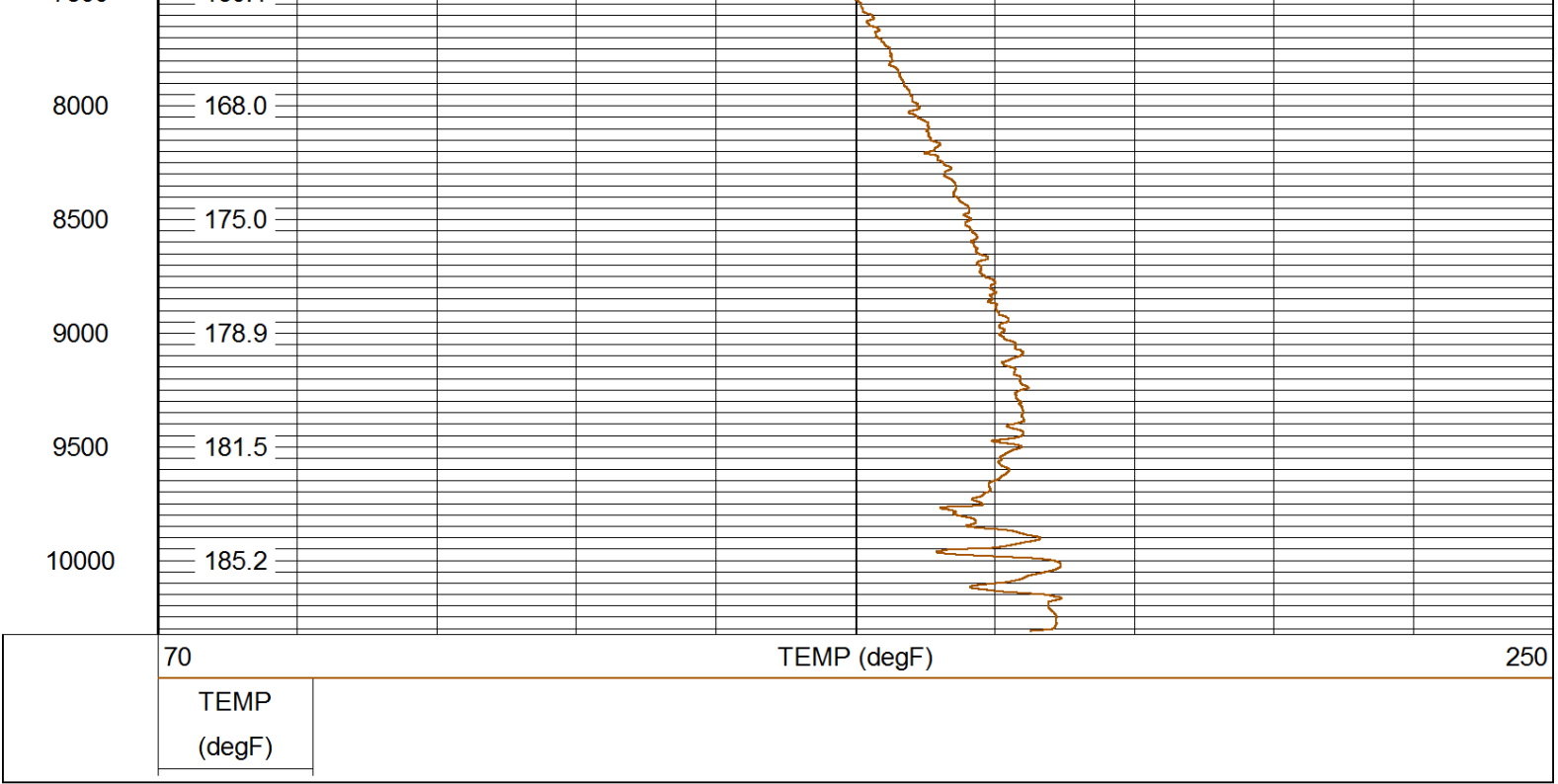
# MAIN PASS QUICKLOOK

Database File: 010516\_wpxenergy\_fed\_ru\_32\_8.db  
 Dataset Pathname: main/pass3  
 Presentation Format: rmtemp\_q  
 Dataset Creation: Wed Jan 06 02:05:49 2016 by Calc SCH 120430  
 Charted by: Depth in Feet scaled 1:10000

70 TEMP (degF) 250

TEMP  
(degF)





Company	WPX ENERGY
Well	FEDERAL RU 32 - 8
Field	RULISON
County	GARFIELD
State	COLORADO