

TEMPERATURE LOG
CCL

Company	WPX ENERGY			
Well	RU 21 - 8			
Field	RULISON			
County	GARFIELD		State	COLORADO
Location:	API #: 05 - 045 - 22783			Other Services
SEC 8		TWP 7s	RGE 93w	Elevation K.B. D.F. G.L.
Permanent Datum Log Measured From Drilling Measured From		G.L. K.B. K.B.		
Date	11 - 26 - 2015			
Rin Number	ONE			
Depth Driller	10000'			
Present Depth Driller	N/A			
Depth Logger	9983'			
Bottom Logged Interval	9982'			
Top Log Interval	SURFACE			
Fluid Level	SURFACE			
Type Fluid	WATER			
Max. Recorded Temp.	184.9 Deg. F			
Estimated Cement Top	4100'			
Equipment Number	216			
Location	GRAND JCT.			
Recorded By	INGRAM		FERNANDEZ	
Witnessed By	MR. BEAUDE			
Borehole Record				
Rin Number	Bit	From	To	Size
				Weight
				From
				To

<<< Fold Here >>>

All interpretations are opinions based on inferences from electrical or other measurements and we cannot and do not guarantee the accuracy or correctness of any interpretation, and we shall not, except in the case of gross or willful negligence on our part, be liable or responsible for any loss, costs, damages, or expenses incurred or sustained by anyone resulting from any interpretation made by any of our officers, agents or employees. These interpretations are also subject to our general terms and conditions set out in our current Price Schedule.

WARRIOR 7.0 SOFTWARE - Comments

NOTE: LOG WAS DEPTH CORRELATED USING KB OF 24'

SHORT JOINT: 6127' TO 6149'

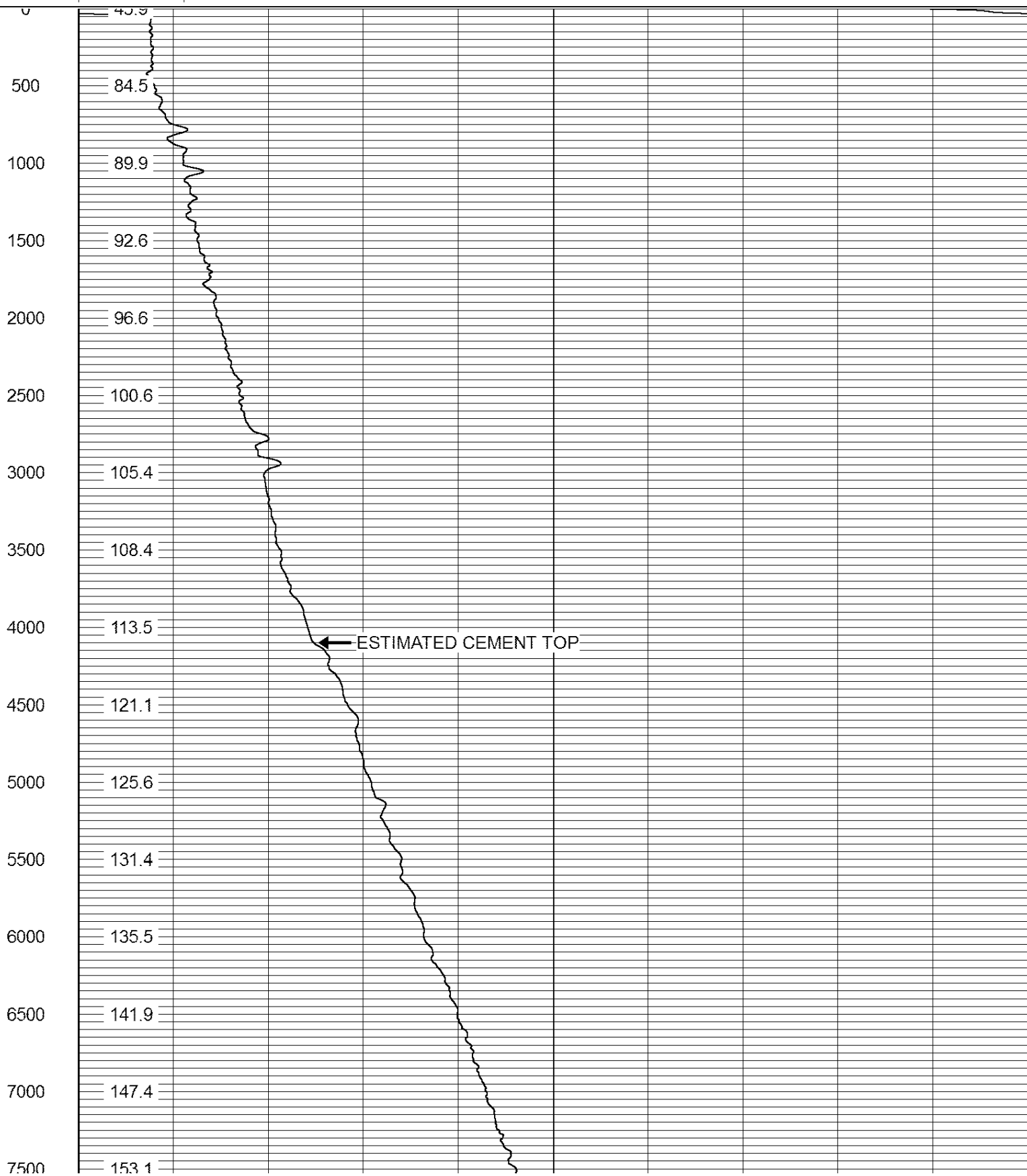
MAIN PASS 5" = 100'
CSG PSI = STATIC

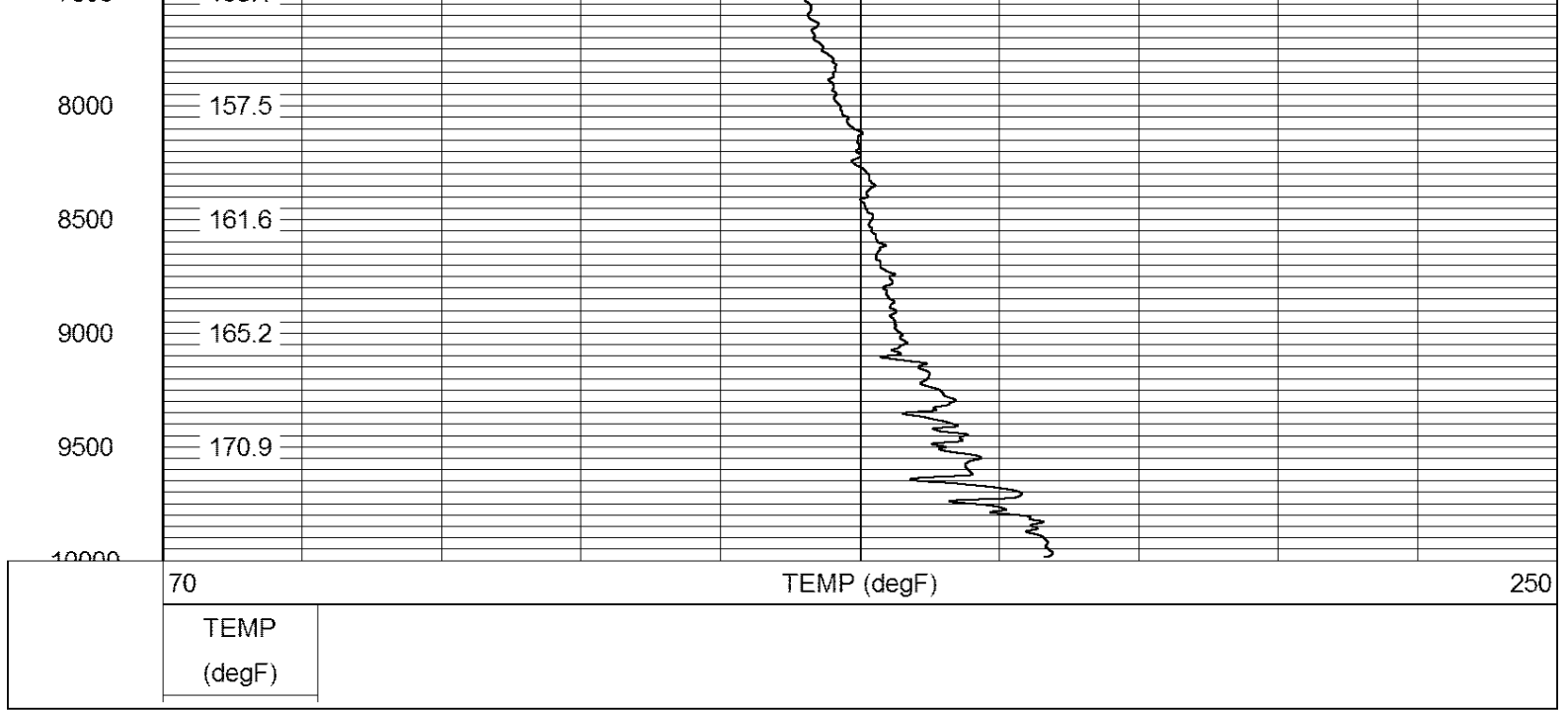


MAIN PASS QUICK LOOK

Database File: 112615_wpxenergy_ru_21_8.db
 Dataset Pathname: main/pass1.1
 Presentation Format: rmtemp_q
 Dataset Creation: Thu Nov 26 11:07:42 2015 by Calc SCH 120430
 Charted by: Depth in Feet scaled 1:10000

70	TEMP (degF)	250
TEMP (degF)		





Company	WPX ENERGY
Well	RU 21 - 8
Field	RULISON
County	GARFIELD
State	COLORADO