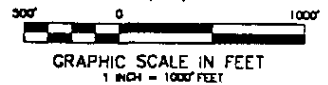
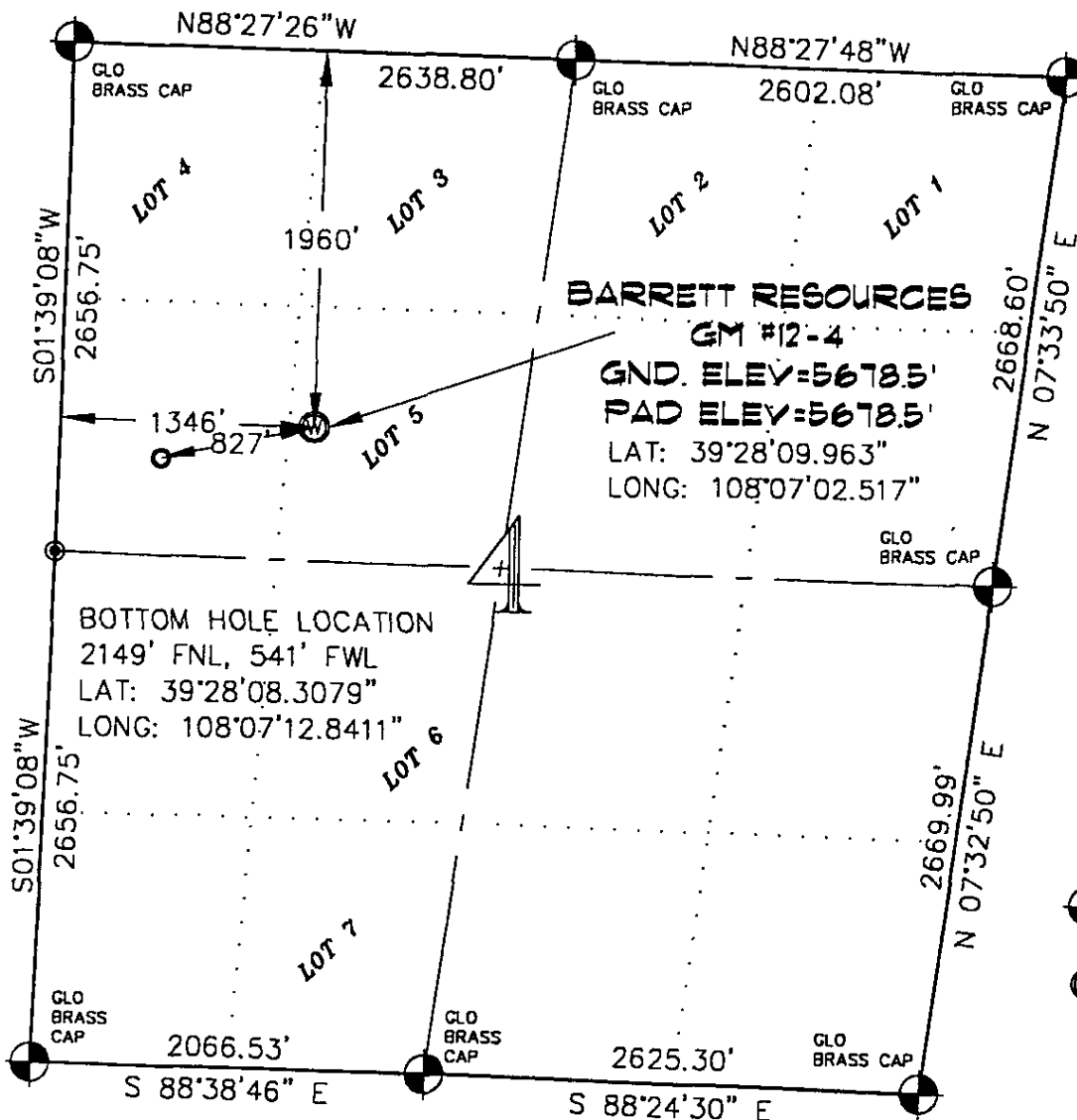


SEC. 4, T. 7 S., R. 96 W. OF THE 6TH P.M.

RECEIVED #1  
LOCATION PLAT  
MAY 16 01  
COCCC



-LEGEND-

- STANDARD LOCATION OF GLO SECTION CORNERS
- ⊙ GLO CORNERS FOUND
- ⊙ WELL LOCATION STAKED

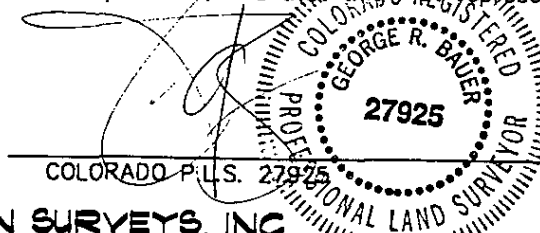
THIS WELL LOCATION PLAT WAS PREPARED FOR: BARRETT RESOURCES TO LOCATE THE GM #12-4, 1960 FEET FROM NORTH LINE AND 1346 FEET FROM THE WEST LINE IN LOT 5 (SE1/4 NW1/4) OF SECTION 4, T. 7 S., R. 96 W. OF THE 6TH P.M. GARFIELD COUNTY, COLORADO.

REFERENCE DOCUMENTS

- 1) T.7S., R.96W., 6TH P.M. GLO PLAT
- 2) U.S.G.S. QUAD: PARACHUTE, CO
- 3) ELEVATIONS BASED ON NAVD 1988
- 4) WELL MEASURED 90° FROM SECTION LINES

SURVEYOR'S CERTIFICATE

I, George R. Bauer, a Professional Land Surveyor in the State of Colorado do hereby certify that this Survey was made under my direct supervision, and that this Plat represents said Survey.



CONSTRUCTION SURVEYS, INC.  
0012 SUNRISE BLVD.  
SILT, CO 81652  
970-876-5753

SURVEYED: 03/08/01	SCALE: 1" = 1000'
DRAFTED: 03/13/01	DWG: PBARRETT1\GM12-4
CHECKED: 03/29/01	SHEET: 1 OF 7