



PROJECT DETAILS: Weld County, CO NAD 83

Geodetic System: US State Plane 1983
Datum: North American Datum 1983
Ellipsoid: GRS 1980
Zone: Colorado Northern Zone
System Datum: Mean Sea Level
Local North: True

Project: Weld County, CO NAD 83
Site: SRC Fagerberg 13-12 Pad
Well: Fagerberg 11C-7-M
Wellbore: OH
Design: Plan #2



Azimuths to True North
Magnetic North: 8.49°



Magnetic Field
Strength: 52600.6snT
Dip Angle: 67.03°
Date: 2/17/2016
Model: BGGM2015

SECTION DETAILS

MD	Inc	Azi	TVD	+N/-S	+E/-W	Dleg	TFace	VSect
0.00	0.00	0.00	0.00	0.00	0.00	0.00	0.00	0.00
300.00	0.00	0.00	300.00	0.00	0.00	0.00	0.00	0.00
800.19	10.00	339.45	797.65	40.78	-15.29	2.00	339.45	-13.01
3251.15	10.00	339.45	3211.35	439.47	-164.71	0.00	0.00	-140.15
3751.34	0.00	0.00	3709.00	480.25	-180.00	2.00	180.00	-153.15
6782.47	0.00	0.00	6740.13	480.25	-180.00	0.00	0.00	-153.15
7600.65	90.00	90.21	7261.00	478.34	340.87	11.00	90.21	366.81
15376.74	90.00	90.21	7261.00	449.81	8116.90	0.00	0.00	8129.36

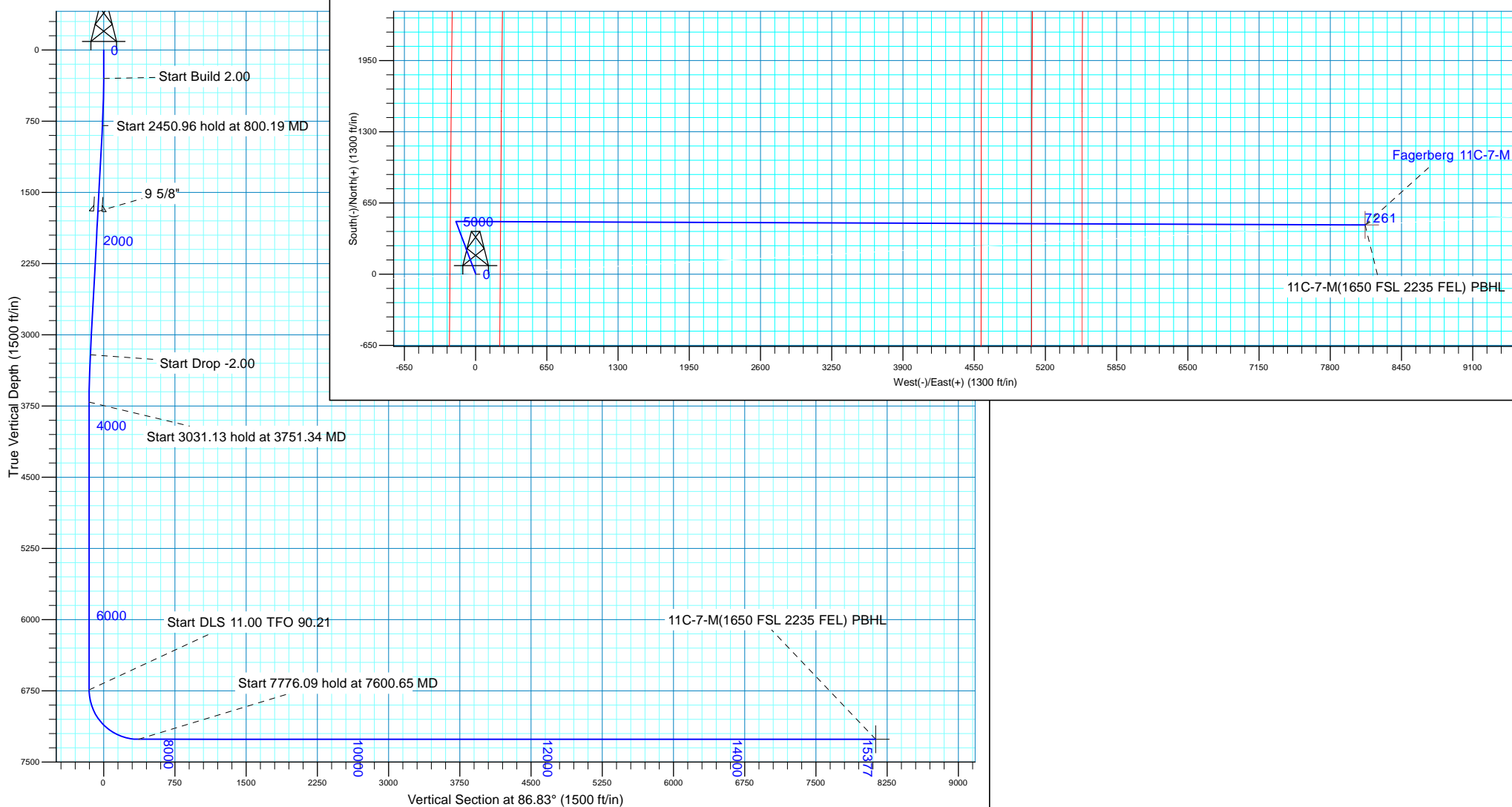
WELL DETAILS: Fagerberg 11C-7-M

GL 4800 & KB 20 @ 4820.00ft (PD 462) 4800.00					
+N/-S	+E/-W	Northings	Easting	Latitude	Longitude
0.00	0.00	1425468.01	3212990.09	40.4987860	-104.7341270

Plan: Plan #2 (Fagerberg 11C-7-M/OH)

CASING DETAILS

Created By:	rscott	Date:	12:55, February 23 2016	TVD	MD	Name	Size
				1700.00	716.47	9 5/8"	9.625





Synergy Resources Corp.

**Weld County, CO NAD 83
SRC Fagerberg 13-12 Pad
Fagerberg 11C-7-M**

OH

Plan: Plan #2

Standard Planning Report

23 February, 2016



Database:	Casper District	Local Co-ordinate Reference:	Well Fagerberg 11C-7-M
Company:	Synergy Resources Corp.	TVD Reference:	GL 4800 & KB 20 @ 4820.00ft (PD 462)
Project:	Weld County, CO NAD 83	MD Reference:	GL 4800 & KB 20 @ 4820.00ft (PD 462)
Site:	SRC Fagerberg 13-12 Pad	North Reference:	True
Well:	Fagerberg 11C-7-M	Survey Calculation Method:	Minimum Curvature
Wellbore:	OH		
Design:	Plan #2		

Project	Weld County, CO NAD 83		
Map System:	US State Plane 1983	System Datum:	Mean Sea Level
Geo Datum:	North American Datum 1983		
Map Zone:	Colorado Northern Zone		

Site	SRC Fagerberg 13-12 Pad, SECTION 12 T6N R66W			
Site Position:		Northing:	1,425,367.83 usft	Latitude: 40.4985110
From:	Lat/Long	Easting:	3,212,990.12 usft	Longitude: -104.7341300
Position Uncertainty:	3.28 ft	Slot Radius:	13.200 in	Grid Convergence: 0.49 °

Well	Fagerberg 11C-7-M, 1171 FSL 235 FWL			
Well Position	+N/-S	100.17 ft	Northing:	1,425,468.01 usft
	+E/-W	0.83 ft	Easting:	3,212,990.09 usft
Position Uncertainty		3.28 ft	Wellhead Elevation:	0.00 ft
			Ground Level:	4,800.00 ft

Wellbore	OH				
Magnetics	Model Name	Sample Date	Declination (°)	Dip Angle (°)	Field Strength (nT)
	BGGM2015	2/17/2016	8.49	67.03	52,601

Design	Plan #2			
Audit Notes:				
Version:	Phase:	PLAN	Tie On Depth:	0.00
Vertical Section:	Depth From (TVD)	+N/-S	+E/-W	Direction
	(ft)	(ft)	(ft)	(°)
	0.00	0.00	0.00	86.83

Plan Sections										
Measured Depth (ft)	Inclination (°)	Azimuth (°)	Vertical Depth (ft)	+N/-S (ft)	+E/-W (ft)	Dogleg Rate (°/100ft)	Build Rate (°/100ft)	Turn Rate (°/100ft)	TFO (°)	Target
0.00	0.00	0.00	0.00	0.00	0.00	0.00	0.00	0.00	0.00	
300.00	0.00	0.00	300.00	0.00	0.00	0.00	0.00	0.00	0.00	
800.19	10.00	339.45	797.65	40.78	-15.29	2.00	2.00	0.00	339.45	
3,251.15	10.00	339.45	3,211.35	439.47	-164.71	0.00	0.00	0.00	0.00	
3,751.34	0.00	0.00	3,709.00	480.25	-180.00	2.00	-2.00	0.00	180.00	
6,782.47	0.00	0.00	6,740.13	480.25	-180.00	0.00	0.00	0.00	0.00	
7,600.65	90.00	90.21	7,261.00	478.34	340.87	11.00	11.00	11.03	90.21	
15,376.74	90.00	90.21	7,261.00	449.81	8,116.91	0.00	0.00	0.00	0.00	11C-7-M(1650 FSL 22

Database:	Casper District	Local Co-ordinate Reference:	Well Fagerberg 11C-7-M
Company:	Synergy Resources Corp.	TVD Reference:	GL 4800 & KB 20 @ 4820.00ft (PD 462)
Project:	Weld County, CO NAD 83	MD Reference:	GL 4800 & KB 20 @ 4820.00ft (PD 462)
Site:	SRC Fagerberg 13-12 Pad	North Reference:	True
Well:	Fagerberg 11C-7-M	Survey Calculation Method:	Minimum Curvature
Wellbore:	OH		
Design:	Plan #2		

Planned Survey									
Measured Depth (ft)	Inclination (°)	Azimuth (°)	Vertical Depth (ft)	+N/-S (ft)	+E/-W (ft)	Vertical Section (ft)	Dogleg Rate (°/100ft)	Build Rate (°/100ft)	Turn Rate (°/100ft)
0.00	0.00	0.00	0.00	0.00	0.00	0.00	0.00	0.00	0.00
100.00	0.00	0.00	100.00	0.00	0.00	0.00	0.00	0.00	0.00
200.00	0.00	0.00	200.00	0.00	0.00	0.00	0.00	0.00	0.00
300.00	0.00	0.00	300.00	0.00	0.00	0.00	0.00	0.00	0.00
Start Build 2.00									
400.00	2.00	339.45	399.98	1.63	-0.61	-0.52	2.00	2.00	0.00
500.00	4.00	339.45	499.84	6.53	-2.45	-2.08	2.00	2.00	0.00
600.00	6.00	339.45	599.45	14.70	-5.51	-4.69	2.00	2.00	0.00
700.00	8.00	339.45	698.70	26.11	-9.78	-8.33	2.00	2.00	0.00
800.00	10.00	339.45	797.47	40.75	-15.27	-13.00	2.00	2.00	0.00
800.19	10.00	339.45	797.65	40.78	-15.29	-13.01	2.00	2.00	0.00
Start 2450.96 hold at 800.19 MD									
900.00	10.00	339.45	895.95	57.02	-21.37	-18.18	0.00	0.00	0.00
1,000.00	10.00	339.45	994.42	73.29	-27.47	-23.37	0.00	0.00	0.00
1,100.00	10.00	339.45	1,092.90	89.55	-33.56	-28.56	0.00	0.00	0.00
1,200.00	10.00	339.45	1,191.38	105.82	-39.66	-33.75	0.00	0.00	0.00
1,300.00	10.00	339.45	1,289.86	122.09	-45.76	-38.93	0.00	0.00	0.00
1,400.00	10.00	339.45	1,388.34	138.35	-51.85	-44.12	0.00	0.00	0.00
1,500.00	10.00	339.45	1,486.82	154.62	-57.95	-49.31	0.00	0.00	0.00
1,600.00	10.00	339.45	1,585.30	170.88	-64.05	-54.49	0.00	0.00	0.00
1,700.00	10.00	339.45	1,683.78	187.15	-70.14	-59.68	0.00	0.00	0.00
1,716.47	10.00	339.45	1,700.00	189.83	-71.15	-60.54	0.00	0.00	0.00
9 5/8"									
1,800.00	10.00	339.45	1,782.26	203.42	-76.24	-64.87	0.00	0.00	0.00
1,900.00	10.00	339.45	1,880.74	219.68	-82.34	-70.06	0.00	0.00	0.00
2,000.00	10.00	339.45	1,979.22	235.95	-88.44	-75.24	0.00	0.00	0.00
2,100.00	10.00	339.45	2,077.70	252.22	-94.53	-80.43	0.00	0.00	0.00
2,200.00	10.00	339.45	2,176.18	268.48	-100.63	-85.62	0.00	0.00	0.00
2,300.00	10.00	339.45	2,274.66	284.75	-106.73	-90.81	0.00	0.00	0.00
2,400.00	10.00	339.45	2,373.14	301.01	-112.82	-95.99	0.00	0.00	0.00
2,500.00	10.00	339.45	2,471.62	317.28	-118.92	-101.18	0.00	0.00	0.00
2,600.00	10.00	339.45	2,570.10	333.55	-125.02	-106.37	0.00	0.00	0.00
2,700.00	10.00	339.45	2,668.58	349.81	-131.11	-111.56	0.00	0.00	0.00
2,800.00	10.00	339.45	2,767.06	366.08	-137.21	-116.74	0.00	0.00	0.00
2,900.00	10.00	339.45	2,865.54	382.35	-143.31	-121.93	0.00	0.00	0.00
3,000.00	10.00	339.45	2,964.02	398.61	-149.40	-127.12	0.00	0.00	0.00
3,100.00	10.00	339.45	3,062.50	414.88	-155.50	-132.30	0.00	0.00	0.00
3,200.00	10.00	339.45	3,160.98	431.15	-161.60	-137.49	0.00	0.00	0.00
3,251.15	10.00	339.45	3,211.35	439.47	-164.71	-140.15	0.00	0.00	0.00
Start Drop -2.00									
3,300.00	9.03	339.45	3,259.53	447.03	-167.55	-142.56	2.00	-2.00	0.00
3,400.00	7.03	339.45	3,358.54	460.10	-172.45	-146.73	2.00	-2.00	0.00
3,500.00	5.03	339.45	3,457.98	469.93	-176.13	-149.86	2.00	-2.00	0.00
3,600.00	3.03	339.45	3,557.73	476.51	-178.60	-151.96	2.00	-2.00	0.00
3,700.00	1.03	339.45	3,657.66	479.82	-179.84	-153.01	2.00	-2.00	0.00
3,751.34	0.00	0.00	3,709.00	480.25	-180.00	-153.15	2.00	-2.00	0.00
Start 3031.13 hold at 3751.34 MD									
3,800.00	0.00	0.00	3,757.66	480.25	-180.00	-153.15	0.00	0.00	0.00
3,900.00	0.00	0.00	3,857.66	480.25	-180.00	-153.15	0.00	0.00	0.00
4,000.00	0.00	0.00	3,957.66	480.25	-180.00	-153.15	0.00	0.00	0.00
4,100.00	0.00	0.00	4,057.66	480.25	-180.00	-153.15	0.00	0.00	0.00
4,200.00	0.00	0.00	4,157.66	480.25	-180.00	-153.15	0.00	0.00	0.00
4,300.00	0.00	0.00	4,257.66	480.25	-180.00	-153.15	0.00	0.00	0.00
4,400.00	0.00	0.00	4,357.66	480.25	-180.00	-153.15	0.00	0.00	0.00

Database:	Casper District	Local Co-ordinate Reference:	Well Fagerberg 11C-7-M
Company:	Synergy Resources Corp.	TVD Reference:	GL 4800 & KB 20 @ 4820.00ft (PD 462)
Project:	Weld County, CO NAD 83	MD Reference:	GL 4800 & KB 20 @ 4820.00ft (PD 462)
Site:	SRC Fagerberg 13-12 Pad	North Reference:	True
Well:	Fagerberg 11C-7-M	Survey Calculation Method:	Minimum Curvature
Wellbore:	OH		
Design:	Plan #2		

Planned Survey									
Measured Depth (ft)	Inclination (°)	Azimuth (°)	Vertical Depth (ft)	+N/-S (ft)	+E/-W (ft)	Vertical Section (ft)	Dogleg Rate (°/100ft)	Build Rate (°/100ft)	Turn Rate (°/100ft)
4,500.00	0.00	0.00	4,457.66	480.25	-180.00	-153.15	0.00	0.00	0.00
4,600.00	0.00	0.00	4,557.66	480.25	-180.00	-153.15	0.00	0.00	0.00
4,700.00	0.00	0.00	4,657.66	480.25	-180.00	-153.15	0.00	0.00	0.00
4,800.00	0.00	0.00	4,757.66	480.25	-180.00	-153.15	0.00	0.00	0.00
4,900.00	0.00	0.00	4,857.66	480.25	-180.00	-153.15	0.00	0.00	0.00
5,000.00	0.00	0.00	4,957.66	480.25	-180.00	-153.15	0.00	0.00	0.00
5,100.00	0.00	0.00	5,057.66	480.25	-180.00	-153.15	0.00	0.00	0.00
5,200.00	0.00	0.00	5,157.66	480.25	-180.00	-153.15	0.00	0.00	0.00
5,300.00	0.00	0.00	5,257.66	480.25	-180.00	-153.15	0.00	0.00	0.00
5,400.00	0.00	0.00	5,357.66	480.25	-180.00	-153.15	0.00	0.00	0.00
5,500.00	0.00	0.00	5,457.66	480.25	-180.00	-153.15	0.00	0.00	0.00
5,600.00	0.00	0.00	5,557.66	480.25	-180.00	-153.15	0.00	0.00	0.00
5,700.00	0.00	0.00	5,657.66	480.25	-180.00	-153.15	0.00	0.00	0.00
5,800.00	0.00	0.00	5,757.66	480.25	-180.00	-153.15	0.00	0.00	0.00
5,900.00	0.00	0.00	5,857.66	480.25	-180.00	-153.15	0.00	0.00	0.00
6,000.00	0.00	0.00	5,957.66	480.25	-180.00	-153.15	0.00	0.00	0.00
6,100.00	0.00	0.00	6,057.66	480.25	-180.00	-153.15	0.00	0.00	0.00
6,200.00	0.00	0.00	6,157.66	480.25	-180.00	-153.15	0.00	0.00	0.00
6,300.00	0.00	0.00	6,257.66	480.25	-180.00	-153.15	0.00	0.00	0.00
6,400.00	0.00	0.00	6,357.66	480.25	-180.00	-153.15	0.00	0.00	0.00
6,500.00	0.00	0.00	6,457.66	480.25	-180.00	-153.15	0.00	0.00	0.00
6,600.00	0.00	0.00	6,557.66	480.25	-180.00	-153.15	0.00	0.00	0.00
6,700.00	0.00	0.00	6,657.66	480.25	-180.00	-153.15	0.00	0.00	0.00
6,782.47	0.00	0.00	6,740.13	480.25	-180.00	-153.15	0.00	0.00	0.00
Start DLS 11.00 TFO 90.21									
6,800.00	1.93	90.21	6,757.66	480.25	-179.70	-152.86	11.00	11.00	0.00
6,900.00	12.93	90.21	6,856.67	480.20	-166.80	-139.97	11.00	11.00	0.00
7,000.00	23.93	90.21	6,951.39	480.09	-135.23	-108.46	11.00	11.00	0.00
7,100.00	34.93	90.21	7,038.36	479.91	-86.17	-59.49	11.00	11.00	0.00
7,200.00	45.93	90.21	7,114.36	479.67	-21.43	5.15	11.00	11.00	0.00
7,300.00	56.93	90.21	7,176.61	479.38	56.64	83.08	11.00	11.00	0.00
7,400.00	67.93	90.21	7,222.83	479.06	145.14	171.43	11.00	11.00	0.00
7,500.00	78.93	90.21	7,251.31	478.71	240.84	266.96	11.00	11.00	0.00
7,600.00	89.93	90.21	7,261.00	478.34	340.22	366.16	11.00	11.00	0.00
7,600.65	90.00	90.21	7,261.00	478.34	340.87	366.81	11.00	11.00	0.00
Start 7776.09 hold at 7600.65 MD									
7,700.00	90.00	90.21	7,261.00	477.97	440.22	465.99	0.00	0.00	0.00
7,800.00	90.00	90.21	7,261.00	477.61	540.22	565.81	0.00	0.00	0.00
7,900.00	90.00	90.21	7,261.00	477.24	640.21	665.64	0.00	0.00	0.00
8,000.00	90.00	90.21	7,261.00	476.87	740.21	765.47	0.00	0.00	0.00
8,100.00	90.00	90.21	7,261.00	476.51	840.21	865.29	0.00	0.00	0.00
8,200.00	90.00	90.21	7,261.00	476.14	940.21	965.12	0.00	0.00	0.00
8,300.00	90.00	90.21	7,261.00	475.77	1,040.21	1,064.94	0.00	0.00	0.00
8,400.00	90.00	90.21	7,261.00	475.41	1,140.21	1,164.77	0.00	0.00	0.00
8,500.00	90.00	90.21	7,261.00	475.04	1,240.21	1,264.60	0.00	0.00	0.00
8,600.00	90.00	90.21	7,261.00	474.67	1,340.21	1,364.42	0.00	0.00	0.00
8,700.00	90.00	90.21	7,261.00	474.31	1,440.21	1,464.25	0.00	0.00	0.00
8,800.00	90.00	90.21	7,261.00	473.94	1,540.21	1,564.07	0.00	0.00	0.00
8,900.00	90.00	90.21	7,261.00	473.57	1,640.21	1,663.90	0.00	0.00	0.00
9,000.00	90.00	90.21	7,261.00	473.20	1,740.21	1,763.72	0.00	0.00	0.00
9,100.00	90.00	90.21	7,261.00	472.84	1,840.21	1,863.55	0.00	0.00	0.00
9,200.00	90.00	90.21	7,261.00	472.47	1,940.21	1,963.38	0.00	0.00	0.00
9,300.00	90.00	90.21	7,261.00	472.10	2,040.21	2,063.20	0.00	0.00	0.00

Database:	Casper District	Local Co-ordinate Reference:	Well Fagerberg 11C-7-M
Company:	Synergy Resources Corp.	TVD Reference:	GL 4800 & KB 20 @ 4820.00ft (PD 462)
Project:	Weld County, CO NAD 83	MD Reference:	GL 4800 & KB 20 @ 4820.00ft (PD 462)
Site:	SRC Fagerberg 13-12 Pad	North Reference:	True
Well:	Fagerberg 11C-7-M	Survey Calculation Method:	Minimum Curvature
Wellbore:	OH		
Design:	Plan #2		

Planned Survey									
Measured Depth (ft)	Inclination (°)	Azimuth (°)	Vertical Depth (ft)	+N/-S (ft)	+E/-W (ft)	Vertical Section (ft)	Dogleg Rate (°/100ft)	Build Rate (°/100ft)	Turn Rate (°/100ft)
9,400.00	90.00	90.21	7,261.00	471.74	2,140.20	2,163.03	0.00	0.00	0.00
9,500.00	90.00	90.21	7,261.00	471.37	2,240.20	2,262.85	0.00	0.00	0.00
9,600.00	90.00	90.21	7,261.00	471.00	2,340.20	2,362.68	0.00	0.00	0.00
9,700.00	90.00	90.21	7,261.00	470.64	2,440.20	2,462.51	0.00	0.00	0.00
9,800.00	90.00	90.21	7,261.00	470.27	2,540.20	2,562.33	0.00	0.00	0.00
9,900.00	90.00	90.21	7,261.00	469.90	2,640.20	2,662.16	0.00	0.00	0.00
10,000.00	90.00	90.21	7,261.00	469.54	2,740.20	2,761.98	0.00	0.00	0.00
10,100.00	90.00	90.21	7,261.00	469.17	2,840.20	2,861.81	0.00	0.00	0.00
10,200.00	90.00	90.21	7,261.00	468.80	2,940.20	2,961.63	0.00	0.00	0.00
10,300.00	90.00	90.21	7,261.00	468.44	3,040.20	3,061.46	0.00	0.00	0.00
10,400.00	90.00	90.21	7,261.00	468.07	3,140.20	3,161.29	0.00	0.00	0.00
10,500.00	90.00	90.21	7,261.00	467.70	3,240.20	3,261.11	0.00	0.00	0.00
10,600.00	90.00	90.21	7,261.00	467.33	3,340.20	3,360.94	0.00	0.00	0.00
10,700.00	90.00	90.21	7,261.00	466.97	3,440.20	3,460.76	0.00	0.00	0.00
10,800.00	90.00	90.21	7,261.00	466.60	3,540.20	3,560.59	0.00	0.00	0.00
10,900.00	90.00	90.21	7,261.00	466.23	3,640.19	3,660.42	0.00	0.00	0.00
11,000.00	90.00	90.21	7,261.00	465.87	3,740.19	3,760.24	0.00	0.00	0.00
11,100.00	90.00	90.21	7,261.00	465.50	3,840.19	3,860.07	0.00	0.00	0.00
11,200.00	90.00	90.21	7,261.00	465.13	3,940.19	3,959.89	0.00	0.00	0.00
11,300.00	90.00	90.21	7,261.00	464.77	4,040.19	4,059.72	0.00	0.00	0.00
11,400.00	90.00	90.21	7,261.00	464.40	4,140.19	4,159.54	0.00	0.00	0.00
11,500.00	90.00	90.21	7,261.00	464.03	4,240.19	4,259.37	0.00	0.00	0.00
11,600.00	90.00	90.21	7,261.00	463.67	4,340.19	4,359.20	0.00	0.00	0.00
11,700.00	90.00	90.21	7,261.00	463.30	4,440.19	4,459.02	0.00	0.00	0.00
11,800.00	90.00	90.21	7,261.00	462.93	4,540.19	4,558.85	0.00	0.00	0.00
11,900.00	90.00	90.21	7,261.00	462.56	4,640.19	4,658.67	0.00	0.00	0.00
12,000.00	90.00	90.21	7,261.00	462.20	4,740.19	4,758.50	0.00	0.00	0.00
12,100.00	90.00	90.21	7,261.00	461.83	4,840.19	4,858.33	0.00	0.00	0.00
12,200.00	90.00	90.21	7,261.00	461.46	4,940.19	4,958.15	0.00	0.00	0.00
12,300.00	90.00	90.21	7,261.00	461.10	5,040.19	5,057.98	0.00	0.00	0.00
12,400.00	90.00	90.21	7,261.00	460.73	5,140.18	5,157.80	0.00	0.00	0.00
12,500.00	90.00	90.21	7,261.00	460.36	5,240.18	5,257.63	0.00	0.00	0.00
12,600.00	90.00	90.21	7,261.00	460.00	5,340.18	5,357.45	0.00	0.00	0.00
12,700.00	90.00	90.21	7,261.00	459.63	5,440.18	5,457.28	0.00	0.00	0.00
12,800.00	90.00	90.21	7,261.00	459.26	5,540.18	5,557.11	0.00	0.00	0.00
12,900.00	90.00	90.21	7,261.00	458.90	5,640.18	5,656.93	0.00	0.00	0.00
13,000.00	90.00	90.21	7,261.00	458.53	5,740.18	5,756.76	0.00	0.00	0.00
13,100.00	90.00	90.21	7,261.00	458.16	5,840.18	5,856.58	0.00	0.00	0.00
13,200.00	90.00	90.21	7,261.00	457.80	5,940.18	5,956.41	0.00	0.00	0.00
13,300.00	90.00	90.21	7,261.00	457.43	6,040.18	6,056.24	0.00	0.00	0.00
13,400.00	90.00	90.21	7,261.00	457.06	6,140.18	6,156.06	0.00	0.00	0.00
13,500.00	90.00	90.21	7,261.00	456.69	6,240.18	6,255.89	0.00	0.00	0.00
13,600.00	90.00	90.21	7,261.00	456.33	6,340.18	6,355.71	0.00	0.00	0.00
13,700.00	90.00	90.21	7,261.00	455.96	6,440.18	6,455.54	0.00	0.00	0.00
13,800.00	90.00	90.21	7,261.00	455.59	6,540.18	6,555.36	0.00	0.00	0.00
13,900.00	90.00	90.21	7,261.00	455.23	6,640.17	6,655.19	0.00	0.00	0.00
14,000.00	90.00	90.21	7,261.00	454.86	6,740.17	6,755.02	0.00	0.00	0.00
14,100.00	90.00	90.21	7,261.00	454.49	6,840.17	6,854.84	0.00	0.00	0.00
14,200.00	90.00	90.21	7,261.00	454.13	6,940.17	6,954.67	0.00	0.00	0.00
14,300.00	90.00	90.21	7,261.00	453.76	7,040.17	7,054.49	0.00	0.00	0.00
14,400.00	90.00	90.21	7,261.00	453.39	7,140.17	7,154.32	0.00	0.00	0.00
14,500.00	90.00	90.21	7,261.00	453.03	7,240.17	7,254.15	0.00	0.00	0.00
14,600.00	90.00	90.21	7,261.00	452.66	7,340.17	7,353.97	0.00	0.00	0.00
14,700.00	90.00	90.21	7,261.00	452.29	7,440.17	7,453.80	0.00	0.00	0.00

Database:	Casper District	Local Co-ordinate Reference:	Well Fagerberg 11C-7-M
Company:	Synergy Resources Corp.	TVD Reference:	GL 4800 & KB 20 @ 4820.00ft (PD 462)
Project:	Weld County, CO NAD 83	MD Reference:	GL 4800 & KB 20 @ 4820.00ft (PD 462)
Site:	SRC Fagerberg 13-12 Pad	North Reference:	True
Well:	Fagerberg 11C-7-M	Survey Calculation Method:	Minimum Curvature
Wellbore:	OH		
Design:	Plan #2		

Planned Survey									
Measured Depth (ft)	Inclination (°)	Azimuth (°)	Vertical Depth (ft)	+N/-S (ft)	+E/-W (ft)	Vertical Section (ft)	Dogleg Rate (°/100ft)	Build Rate (°/100ft)	Turn Rate (°/100ft)
14,800.00	90.00	90.21	7,261.00	451.92	7,540.17	7,553.62	0.00	0.00	0.00
14,900.00	90.00	90.21	7,261.00	451.56	7,640.17	7,653.45	0.00	0.00	0.00
15,000.00	90.00	90.21	7,261.00	451.19	7,740.17	7,753.27	0.00	0.00	0.00
15,100.00	90.00	90.21	7,261.00	450.82	7,840.17	7,853.10	0.00	0.00	0.00
15,200.00	90.00	90.21	7,261.00	450.46	7,940.17	7,952.93	0.00	0.00	0.00
15,300.00	90.00	90.21	7,261.00	450.09	8,040.17	8,052.75	0.00	0.00	0.00
15,376.74	90.00	90.21	7,261.00	449.81	8,116.91	8,129.36	0.00	0.00	0.00
TD at 15376.74 - 11C-7-M(1650 FSL 2235 FEL) PBHL									

Design Targets									
Target Name	Dip Angle (°)	Dip Dir. (°)	TVD (ft)	+N/-S (ft)	+E/-W (ft)	Northing (usft)	Easting (usft)	Latitude	Longitude
- hit/miss target									
- Shape									
11C-7-M(1650 FSL 2235 FEL) PBHL	0.00	0.00	7,261.00	449.81	8,116.91	1,425,987.90	3,221,102.80	40.5000170	-104.7049400
- plan hits target center									
- Point									

Casing Points					
Measured Depth (ft)	Vertical Depth (ft)	Name	Casing Diameter (in)	Hole Diameter (in)	
1,716.47	1,700.00	9 5/8"	9.625	13.500	

Plan Annotations				
Measured Depth (ft)	Vertical Depth (ft)	Local Coordinates		Comment
		+N/-S (ft)	+E/-W (ft)	
300.00	300.00	0.00	0.00	Start Build 2.00
800.19	797.65	40.78	-15.29	Start 2450.96 hold at 800.19 MD
3,251.15	3,211.35	439.47	-164.71	Start Drop -2.00
3,751.34	3,709.00	480.25	-180.00	Start 3031.13 hold at 3751.34 MD
6,782.47	6,740.13	480.25	-180.00	Start DLS 11.00 TFO 90.21
7,600.65	7,261.00	478.34	340.87	Start 7776.09 hold at 7600.65 MD
15,376.74	7,261.00	449.81	8,116.91	TD at 15376.74