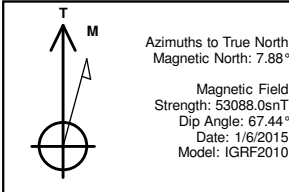




Project: Weld County, CO
Site: Sec 7-T10N-R57W
Well: Horsetail #07H-0613
Wellbore: Hz
Design: Design #1

PROJECT DETAILS: Weld County, CO
Geodetic System: US State Plane 1983
Datum: North American Datum 1983
Ellipsoid: GRS 1980
Zone: Colorado Northern Zone
System Datum: Mean Sea Level



WELL DETAILS: Horsetail #07H-0613

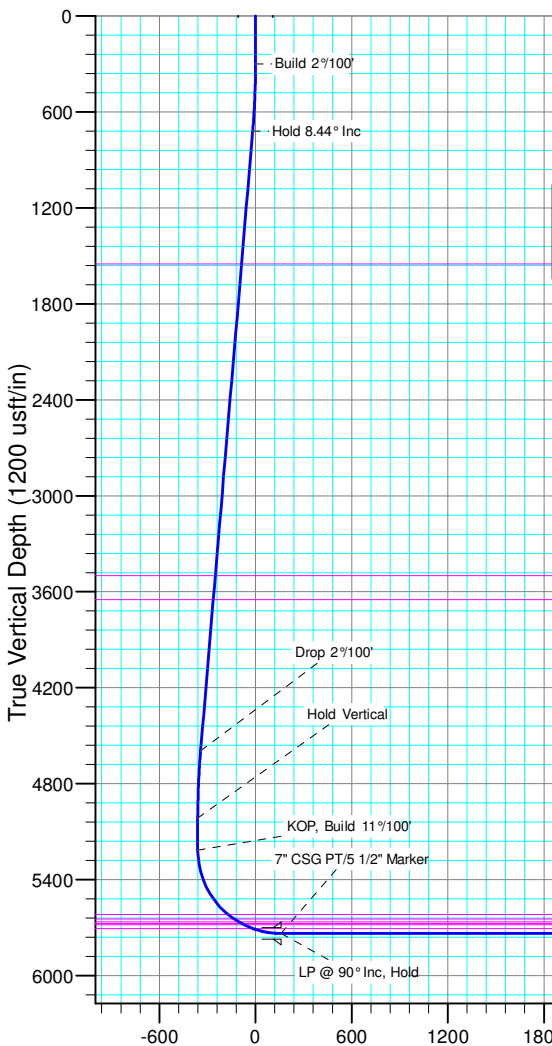
	+N/-S	+E/-W	Northing	Ground Level:	4912.00	Easting	3473683.28	Latitude	40° 51' 12.310 N	Longitude	103° 47' 15.600 W	Slot
	0.00	0.00	1558323.21									

SECTION DETAILS

Sec	MD	Inc	Azi	TVD	+N/-S	+E/-W	Dleg	TFace	Vsect	Target
1	0.00	0.00	0.00	0.00	0.00	0.00	0.00	0.00	0.00	
2	300.00	0.00	0.00	300.00	0.00	0.00	0.00	0.00	0.00	
3	722.19	8.44	231.70	720.66	-19.25	-24.37	2.00	231.70	-17.56	
4	4639.32	8.44	231.70	4595.34	-375.75	-475.75	0.00	0.00	-342.87	
5	5061.51	0.00	0.00	5016.00	-395.00	-500.12	2.00	180.00	-360.43	
6	5261.51	0.00	0.00	5216.00	-395.00	-500.12	0.00	0.00	-360.43	
7	6079.90	90.00	0.00	5737.00	126.00	-500.12	11.00	0.00	159.39	
8	13364.30	90.00	0.00	5737.00	7410.40	-500.12	0.00	0.00	7427.26	PBHL 0613A

FORMATION TOP DETAILS

TVDPath	MDPath	Formation
1550.00	1560.61	Upper Pierre
3500.00	3531.98	Hygiene
3650.00	3683.63	Lower Pierre
5619.00	5722.27	P200 Marker
5646.00	5767.30	P300 Marker
5665.00	5802.74	P350 Marker
5674.00	5821.03	Sharon Springs
5683.00	5840.59	Niobrara
5706.00	5899.27	Top A Chalk



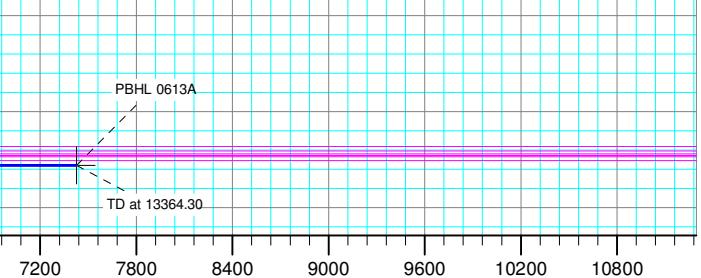
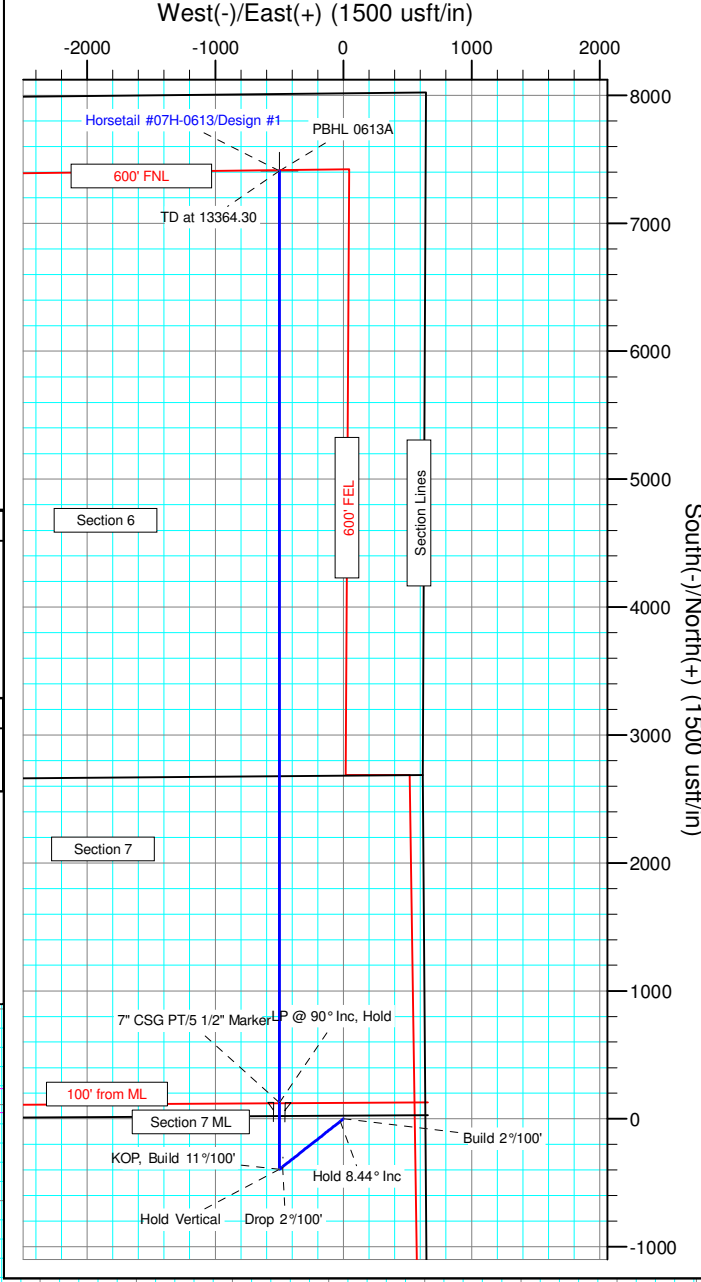
ANNOTATIONS								
TVD	MD	Inc	Azi	+N/-S	+E/-W	VSect	Departure	Annotation
300.00	300.00	0.00	0.00	0.00	0.00	0.00	0.00	Build 2°/100'
720.66	722.19	8.44	231.70	-19.25	-24.37	-17.56	31.05	Hold 8.44° Inc
4595.34	4639.32	8.44	231.70	-375.75	-475.75	-342.87	606.24	Drop 2°/100'
5016.00	5061.51	0.00	0.00	-395.00	-500.12	-360.43	637.30	Hold Vertical
5216.00	5261.51	0.00	0.00	-395.00	-500.12	-360.43	637.30	KOP, Build 11°/100'
5737.00	6079.90	90.00	0.00	126.00	-500.12	159.39	1158.30	LP @ 90° Inc, Hold
5737.00	13364.30	90.00	0.00	7410.40	-500.12	7427.26	8442.70	TD at 13364.30

DESIGN TARGET DETAILS							
Name	TVD	+N/-S	+E/-W	Northing	Easting	Latitude	Longitude
PBHL 0613A	5737.00	7410.40	-500.12	1565722.57	3473040.17	40° 52' 25.530 N	103° 47' 22.110 W

SHL:
2634' FSL, 660' FEL
Sec7-T10N-R57W

BHL:
600' FNL, 1142' FEL
Sec6-T10N-R57W

7"CSG PT/5 1/2" Marker:
2561' FNL, 1160' FEL
Sec7-T10N-R57W



Vertical Section at 356.14° (1200 usft/in)



Whiting Petroleum Corp.

Weld County, CO

Sec 7-T10N-R57W

Horsetail #07H-0613

Hz

Plan: Design #1

Standard Planning Report

01 December, 2015



WOG

Planning Report

Database:	LandmarkEDM	Local Co-ordinate Reference:	Well Horsetail #07H-0613
Company:	Whiting Petroleum Corp.	TVD Reference:	KBE @ 4933.00usft
Project:	Weld County, CO	MD Reference:	KBE @ 4933.00usft
Site:	Sec 7-T10N-R57W	North Reference:	True
Well:	Horsetail #07H-0613	Survey Calculation Method:	Minimum Curvature
Wellbore:	Hz		
Design:	Design #1		

Project	Weld County, CO		
Map System:	US State Plane 1983	System Datum:	Mean Sea Level
Geo Datum:	North American Datum 1983		
Map Zone:	Colorado Northern Zone		

Site		Sec 7-T10N-R57W			
Site Position:		Northing:	1,558,450.14 usft	Latitude:	40° 51' 14.300 N
From:	Lat/Long	Easting:	3,469,810.15 usft	Longitude:	103° 48' 5.960 W
Position Uncertainty:	0.00 usft	Slot Radius:	13.200 in	Grid Convergence:	1.10 °

Well	Horsetail #07H-0613					
Well Position	+N/-S	-201.08 usft	Northing:	1,558,323.22 usft	Latitude:	40° 51' 12.310 N
	+E/-W	3,869.99 usft	Easting:	3,473,683.28 usft	Longitude:	103° 47' 15.600 W
Position Uncertainty		0.00 usft	Wellhead Elevation:		Ground Level:	4,912.00 usft

Wellbore	Hz				
Magnetics	Model Name	Sample Date	Declination (°)	Dip Angle (°)	Field Strength (nT)
	IGRF2010	1/6/2015	7.88	67.44	53,088

Design	Design #1			
Audit Notes:				
Version:	Phase:	PROTOTYPE	Tie On Depth:	0.00
Vertical Section:	Depth From (TVD) (usft)	+N/-S (usft)	+E/-W (usft)	Direction (°)
	0.00	0.00	0.00	356.14

Plan Sections										
Measured Depth (usft)	Inclination (°)	Azimuth (°)	Vertical Depth (usft)	+N/-S (usft)	+E/-W (usft)	Dogleg Rate (°/100ft)	Build Rate (°/100ft)	Turn Rate (°/100ft)	TFO (°)	Target
0.00	0.00	0.00	0.00	0.00	0.00	0.00	0.00	0.00	0.00	
300.00	0.00	0.00	300.00	0.00	0.00	0.00	0.00	0.00	0.00	
722.19	8.44	231.70	720.66	-19.25	-24.37	2.00	2.00	0.00	231.70	
4,639.32	8.44	231.70	4,595.34	-375.75	-475.75	0.00	0.00	0.00	0.00	
5,061.51	0.00	0.00	5,016.00	-395.00	-500.12	2.00	-2.00	0.00	180.00	
5,261.51	0.00	0.00	5,216.00	-395.00	-500.12	0.00	0.00	0.00	0.00	
6,079.90	90.00	0.00	5,737.00	126.00	-500.12	11.00	11.00	0.00	0.00	
13,364.30	90.00	0.00	5,737.00	7,410.40	-500.12	0.00	0.00	0.00	0.00	PBHL 0613A



WOG

Planning Report

Database:	LandmarkEDM	Local Co-ordinate Reference:	Well Horsetail #07H-0613
Company:	Whiting Petroleum Corp.	TVD Reference:	KBE @ 4933.00usft
Project:	Weld County, CO	MD Reference:	KBE @ 4933.00usft
Site:	Sec 7-T10N-R57W	North Reference:	True
Well:	Horsetail #07H-0613	Survey Calculation Method:	Minimum Curvature
Wellbore:	Hz		
Design:	Design #1		

Planned Survey									
Measured Depth (usft)	Inclination (°)	Azimuth (°)	Vertical Depth (usft)	+N/-S (usft)	+E/-W (usft)	Vertical Section (usft)	Dogleg Rate (°/100ft)	Build Rate (°/100ft)	Turn Rate (°/100ft)
0.00	0.00	0.00	0.00	0.00	0.00	0.00	0.00	0.00	0.00
100.00	0.00	0.00	100.00	0.00	0.00	0.00	0.00	0.00	0.00
200.00	0.00	0.00	200.00	0.00	0.00	0.00	0.00	0.00	0.00
300.00	0.00	0.00	300.00	0.00	0.00	0.00	0.00	0.00	0.00
Build 2°/100'									
400.00	2.00	231.70	399.98	-1.08	-1.37	-0.99	2.00	2.00	0.00
500.00	4.00	231.70	499.84	-4.33	-5.48	-3.95	2.00	2.00	0.00
600.00	6.00	231.70	599.45	-9.73	-12.32	-8.88	2.00	2.00	0.00
700.00	8.00	231.70	698.70	-17.28	-21.88	-15.77	2.00	2.00	0.00
722.19	8.44	231.70	720.66	-19.25	-24.37	-17.56	2.00	2.00	0.00
Hold 8.44° Inc									
800.00	8.44	231.70	797.63	-26.33	-33.34	-24.02	0.00	0.00	0.00
900.00	8.44	231.70	896.55	-35.43	-44.86	-32.33	0.00	0.00	0.00
1,000.00	8.44	231.70	995.46	-44.53	-56.38	-40.63	0.00	0.00	0.00
1,100.00	8.44	231.70	1,094.38	-53.63	-67.91	-48.94	0.00	0.00	0.00
1,200.00	8.44	231.70	1,193.29	-62.73	-79.43	-57.24	0.00	0.00	0.00
1,300.00	8.44	231.70	1,292.21	-71.83	-90.95	-65.55	0.00	0.00	0.00
1,400.00	8.44	231.70	1,391.13	-80.94	-102.48	-73.85	0.00	0.00	0.00
1,500.00	8.44	231.70	1,490.04	-90.04	-114.00	-82.16	0.00	0.00	0.00
1,560.61	8.44	231.70	1,550.00	-95.55	-120.98	-87.19	0.00	0.00	0.00
Upper Pierre									
1,600.00	8.44	231.70	1,588.96	-99.14	-125.52	-90.46	0.00	0.00	0.00
1,700.00	8.44	231.70	1,687.87	-108.24	-137.04	-98.77	0.00	0.00	0.00
1,800.00	8.44	231.70	1,786.79	-117.34	-148.57	-107.07	0.00	0.00	0.00
1,900.00	8.44	231.70	1,885.71	-126.44	-160.09	-115.37	0.00	0.00	0.00
2,000.00	8.44	231.70	1,984.62	-135.54	-171.61	-123.68	0.00	0.00	0.00
2,100.00	8.44	231.70	2,083.54	-144.64	-183.14	-131.98	0.00	0.00	0.00
2,200.00	8.44	231.70	2,182.45	-153.75	-194.66	-140.29	0.00	0.00	0.00
2,300.00	8.44	231.70	2,281.37	-162.85	-206.18	-148.59	0.00	0.00	0.00
2,400.00	8.44	231.70	2,380.29	-171.95	-217.71	-156.90	0.00	0.00	0.00
2,500.00	8.44	231.70	2,479.20	-181.05	-229.23	-165.20	0.00	0.00	0.00
2,600.00	8.44	231.70	2,578.12	-190.15	-240.75	-173.51	0.00	0.00	0.00
2,700.00	8.44	231.70	2,677.03	-199.25	-252.28	-181.81	0.00	0.00	0.00
2,800.00	8.44	231.70	2,775.95	-208.35	-263.80	-190.12	0.00	0.00	0.00
2,900.00	8.44	231.70	2,874.87	-217.45	-275.32	-198.42	0.00	0.00	0.00
3,000.00	8.44	231.70	2,973.78	-226.55	-286.85	-206.73	0.00	0.00	0.00
3,100.00	8.44	231.70	3,072.70	-235.66	-298.37	-215.03	0.00	0.00	0.00
3,200.00	8.44	231.70	3,171.61	-244.76	-309.89	-223.33	0.00	0.00	0.00
3,300.00	8.44	231.70	3,270.53	-253.86	-321.42	-231.64	0.00	0.00	0.00
3,400.00	8.44	231.70	3,369.45	-262.96	-332.94	-239.94	0.00	0.00	0.00
3,500.00	8.44	231.70	3,468.36	-272.06	-344.46	-248.25	0.00	0.00	0.00
3,531.98	8.44	231.70	3,500.00	-274.97	-348.15	-250.90	0.00	0.00	0.00
Hygiene									
3,600.00	8.44	231.70	3,567.28	-281.16	-355.99	-256.55	0.00	0.00	0.00
3,683.63	8.44	231.70	3,650.00	-288.77	-365.62	-263.50	0.00	0.00	0.00
Lower Pierre									
3,700.00	8.44	231.70	3,666.20	-290.26	-367.51	-264.86	0.00	0.00	0.00
3,800.00	8.44	231.70	3,765.11	-299.36	-379.03	-273.16	0.00	0.00	0.00
3,900.00	8.44	231.70	3,864.03	-308.47	-390.56	-281.47	0.00	0.00	0.00
4,000.00	8.44	231.70	3,962.94	-317.57	-402.08	-289.77	0.00	0.00	0.00
4,100.00	8.44	231.70	4,061.86	-326.67	-413.60	-298.08	0.00	0.00	0.00
4,200.00	8.44	231.70	4,160.78	-335.77	-425.13	-306.38	0.00	0.00	0.00
4,300.00	8.44	231.70	4,259.69	-344.87	-436.65	-314.69	0.00	0.00	0.00
4,400.00	8.44	231.70	4,358.61	-353.97	-448.17	-322.99	0.00	0.00	0.00



WOG

Planning Report

Database:	LandmarkEDM	Local Co-ordinate Reference:	Well Horsetail #07H-0613
Company:	Whiting Petroleum Corp.	TVD Reference:	KBE @ 4933.00usft
Project:	Weld County, CO	MD Reference:	KBE @ 4933.00usft
Site:	Sec 7-T10N-R57W	North Reference:	True
Well:	Horsetail #07H-0613	Survey Calculation Method:	Minimum Curvature
Wellbore:	Hz		
Design:	Design #1		

Planned Survey									
Measured Depth (usft)	Inclination (°)	Azimuth (°)	Vertical Depth (usft)	+N/-S (usft)	+E/-W (usft)	Vertical Section (usft)	Dogleg Rate (°/100ft)	Build Rate (°/100ft)	Turn Rate (°/100ft)
4,500.00	8.44	231.70	4,457.52	-363.07	-459.70	-331.29	0.00	0.00	0.00
4,600.00	8.44	231.70	4,556.44	-372.17	-471.22	-339.60	0.00	0.00	0.00
4,639.32	8.44	231.70	4,595.34	-375.75	-475.75	-342.87	0.00	0.00	0.00
Drop 2°/100'									
4,700.00	7.23	231.70	4,655.45	-380.88	-482.24	-347.54	2.00	-2.00	0.00
4,800.00	5.23	231.70	4,754.85	-387.61	-490.76	-353.68	2.00	-2.00	0.00
4,900.00	3.23	231.70	4,854.57	-392.18	-496.55	-357.85	2.00	-2.00	0.00
5,000.00	1.23	231.70	4,954.49	-394.59	-499.60	-360.05	2.00	-2.00	0.00
5,061.51	0.00	0.00	5,016.00	-395.00	-500.12	-360.43	2.00	-2.00	0.00
Hold Vertical									
5,100.00	0.00	0.00	5,054.49	-395.00	-500.12	-360.43	0.00	0.00	0.00
5,200.00	0.00	0.00	5,154.49	-395.00	-500.12	-360.43	0.00	0.00	0.00
5,261.51	0.00	0.00	5,216.00	-395.00	-500.12	-360.43	0.00	0.00	0.00
KOP, Build 11°/100'									
5,300.00	4.23	0.00	5,254.45	-393.58	-500.12	-359.01	11.00	11.00	0.00
5,350.00	9.73	0.00	5,304.06	-387.50	-500.12	-352.95	11.00	11.00	0.00
5,400.00	15.23	0.00	5,352.86	-376.70	-500.12	-342.17	11.00	11.00	0.00
5,450.00	20.73	0.00	5,400.40	-361.28	-500.12	-326.78	11.00	11.00	0.00
5,500.00	26.23	0.00	5,446.25	-341.36	-500.12	-306.91	11.00	11.00	0.00
5,550.00	31.73	0.00	5,489.97	-317.15	-500.12	-282.75	11.00	11.00	0.00
5,600.00	37.22	0.00	5,531.17	-288.86	-500.12	-254.53	11.00	11.00	0.00
5,650.00	42.72	0.00	5,569.47	-256.75	-500.12	-222.49	11.00	11.00	0.00
5,700.00	48.22	0.00	5,604.52	-221.12	-500.12	-186.94	11.00	11.00	0.00
5,722.27	50.67	0.00	5,619.00	-204.20	-500.12	-170.06	11.00	11.00	0.00
P200 Marker									
5,750.00	53.72	0.00	5,636.00	-182.29	-500.12	-148.20	11.00	11.00	0.00
5,767.30	55.62	0.00	5,646.00	-168.18	-500.12	-134.12	11.00	11.00	0.00
P300 Marker									
5,800.00	59.22	0.00	5,663.61	-140.63	-500.12	-106.63	11.00	11.00	0.00
5,802.74	59.52	0.00	5,665.00	-138.27	-500.12	-104.28	11.00	11.00	0.00
P350 Marker									
5,821.03	61.53	0.00	5,674.00	-122.35	-500.12	-88.39	11.00	11.00	0.00
Sharon Springs									
5,840.59	63.68	0.00	5,683.00	-104.98	-500.12	-71.07	11.00	11.00	0.00
Niobrara									
5,850.00	64.72	0.00	5,687.09	-96.51	-500.12	-62.61	11.00	11.00	0.00
5,899.27	70.14	0.00	5,706.00	-51.03	-500.12	-17.24	11.00	11.00	0.00
Top A Chalk									
5,900.00	70.22	0.00	5,706.25	-50.34	-500.12	-16.55	11.00	11.00	0.00
5,950.00	75.71	0.00	5,720.89	-2.56	-500.12	31.13	11.00	11.00	0.00
6,000.00	81.21	0.00	5,730.89	46.41	-500.12	79.99	11.00	11.00	0.00
6,050.00	86.71	0.00	5,736.14	96.12	-500.12	129.58	11.00	11.00	0.00
6,079.90	90.00	0.00	5,737.00	126.00	-500.12	159.39	11.00	11.00	0.00
LP @ 90° Inc, Hold - 7" CSG PT/5 1/2" Marker									
6,100.00	90.00	0.00	5,737.00	146.10	-500.12	179.45	0.00	0.00	0.00
6,200.00	90.00	0.00	5,737.00	246.10	-500.12	279.22	0.00	0.00	0.00
6,300.00	90.00	0.00	5,737.00	346.10	-500.12	378.99	0.00	0.00	0.00
6,400.00	90.00	0.00	5,737.00	446.10	-500.12	478.77	0.00	0.00	0.00
6,500.00	90.00	0.00	5,737.00	546.10	-500.12	578.54	0.00	0.00	0.00
6,600.00	90.00	0.00	5,737.00	646.10	-500.12	678.31	0.00	0.00	0.00
6,700.00	90.00	0.00	5,737.00	746.10	-500.12	778.08	0.00	0.00	0.00
6,800.00	90.00	0.00	5,737.00	846.10	-500.12	877.86	0.00	0.00	0.00



WOG

Planning Report

Database:	LandmarkEDM	Local Co-ordinate Reference:	Well Horsetail #07H-0613
Company:	Whiting Petroleum Corp.	TVD Reference:	KBE @ 4933.00usft
Project:	Weld County, CO	MD Reference:	KBE @ 4933.00usft
Site:	Sec 7-T10N-R57W	North Reference:	True
Well:	Horsetail #07H-0613	Survey Calculation Method:	Minimum Curvature
Wellbore:	H2		
Design:	Design #1		

Planned Survey									
Measured Depth (usft)	Inclination (°)	Azimuth (°)	Vertical Depth (usft)	+N/-S (usft)	+E/-W (usft)	Vertical Section (usft)	Dogleg Rate (°/100ft)	Build Rate (°/100ft)	Turn Rate (°/100ft)
6,900.00	90.00	0.00	5,737.00	946.10	-500.12	977.63	0.00	0.00	0.00
7,000.00	90.00	0.00	5,737.00	1,046.10	-500.12	1,077.40	0.00	0.00	0.00
7,100.00	90.00	0.00	5,737.00	1,146.10	-500.12	1,177.18	0.00	0.00	0.00
7,200.00	90.00	0.00	5,737.00	1,246.10	-500.12	1,276.95	0.00	0.00	0.00
7,300.00	90.00	0.00	5,737.00	1,346.10	-500.12	1,376.72	0.00	0.00	0.00
7,400.00	90.00	0.00	5,737.00	1,446.10	-500.12	1,476.50	0.00	0.00	0.00
7,500.00	90.00	0.00	5,737.00	1,546.10	-500.12	1,576.27	0.00	0.00	0.00
7,600.00	90.00	0.00	5,737.00	1,646.10	-500.12	1,676.04	0.00	0.00	0.00
7,700.00	90.00	0.00	5,737.00	1,746.10	-500.12	1,775.81	0.00	0.00	0.00
7,800.00	90.00	0.00	5,737.00	1,846.10	-500.12	1,875.59	0.00	0.00	0.00
7,900.00	90.00	0.00	5,737.00	1,946.10	-500.12	1,975.36	0.00	0.00	0.00
8,000.00	90.00	0.00	5,737.00	2,046.10	-500.12	2,075.13	0.00	0.00	0.00
8,100.00	90.00	0.00	5,737.00	2,146.10	-500.12	2,174.91	0.00	0.00	0.00
8,200.00	90.00	0.00	5,737.00	2,246.10	-500.12	2,274.68	0.00	0.00	0.00
8,300.00	90.00	0.00	5,737.00	2,346.10	-500.12	2,374.45	0.00	0.00	0.00
8,400.00	90.00	0.00	5,737.00	2,446.10	-500.12	2,474.23	0.00	0.00	0.00
8,500.00	90.00	0.00	5,737.00	2,546.10	-500.12	2,574.00	0.00	0.00	0.00
8,600.00	90.00	0.00	5,737.00	2,646.10	-500.12	2,673.77	0.00	0.00	0.00
8,700.00	90.00	0.00	5,737.00	2,746.10	-500.12	2,773.55	0.00	0.00	0.00
8,800.00	90.00	0.00	5,737.00	2,846.10	-500.12	2,873.32	0.00	0.00	0.00
8,900.00	90.00	0.00	5,737.00	2,946.10	-500.12	2,973.09	0.00	0.00	0.00
9,000.00	90.00	0.00	5,737.00	3,046.10	-500.12	3,072.86	0.00	0.00	0.00
9,100.00	90.00	0.00	5,737.00	3,146.10	-500.12	3,172.64	0.00	0.00	0.00
9,200.00	90.00	0.00	5,737.00	3,246.10	-500.12	3,272.41	0.00	0.00	0.00
9,300.00	90.00	0.00	5,737.00	3,346.10	-500.12	3,372.18	0.00	0.00	0.00
9,400.00	90.00	0.00	5,737.00	3,446.10	-500.12	3,471.96	0.00	0.00	0.00
9,500.00	90.00	0.00	5,737.00	3,546.10	-500.12	3,571.73	0.00	0.00	0.00
9,600.00	90.00	0.00	5,737.00	3,646.10	-500.12	3,671.50	0.00	0.00	0.00
9,700.00	90.00	0.00	5,737.00	3,746.10	-500.12	3,771.28	0.00	0.00	0.00
9,800.00	90.00	0.00	5,737.00	3,846.10	-500.12	3,871.05	0.00	0.00	0.00
9,900.00	90.00	0.00	5,737.00	3,946.10	-500.12	3,970.82	0.00	0.00	0.00
10,000.00	90.00	0.00	5,737.00	4,046.10	-500.12	4,070.59	0.00	0.00	0.00
10,100.00	90.00	0.00	5,737.00	4,146.10	-500.12	4,170.37	0.00	0.00	0.00
10,200.00	90.00	0.00	5,737.00	4,246.10	-500.12	4,270.14	0.00	0.00	0.00
10,300.00	90.00	0.00	5,737.00	4,346.10	-500.12	4,369.91	0.00	0.00	0.00
10,400.00	90.00	0.00	5,737.00	4,446.10	-500.12	4,469.69	0.00	0.00	0.00
10,500.00	90.00	0.00	5,737.00	4,546.10	-500.12	4,569.46	0.00	0.00	0.00
10,600.00	90.00	0.00	5,737.00	4,646.10	-500.12	4,669.23	0.00	0.00	0.00
10,700.00	90.00	0.00	5,737.00	4,746.10	-500.12	4,769.01	0.00	0.00	0.00
10,800.00	90.00	0.00	5,737.00	4,846.10	-500.12	4,868.78	0.00	0.00	0.00
10,900.00	90.00	0.00	5,737.00	4,946.10	-500.12	4,968.55	0.00	0.00	0.00
11,000.00	90.00	0.00	5,737.00	5,046.10	-500.12	5,068.33	0.00	0.00	0.00
11,100.00	90.00	0.00	5,737.00	5,146.10	-500.12	5,168.10	0.00	0.00	0.00
11,200.00	90.00	0.00	5,737.00	5,246.10	-500.12	5,267.87	0.00	0.00	0.00
11,300.00	90.00	0.00	5,737.00	5,346.10	-500.12	5,367.64	0.00	0.00	0.00
11,400.00	90.00	0.00	5,737.00	5,446.10	-500.12	5,467.42	0.00	0.00	0.00
11,500.00	90.00	0.00	5,737.00	5,546.10	-500.12	5,567.19	0.00	0.00	0.00
11,600.00	90.00	0.00	5,737.00	5,646.10	-500.12	5,666.96	0.00	0.00	0.00
11,700.00	90.00	0.00	5,737.00	5,746.10	-500.12	5,766.74	0.00	0.00	0.00
11,800.00	90.00	0.00	5,737.00	5,846.10	-500.12	5,866.51	0.00	0.00	0.00
11,900.00	90.00	0.00	5,737.00	5,946.10	-500.12	5,966.28	0.00	0.00	0.00
12,000.00	90.00	0.00	5,737.00	6,046.10	-500.12	6,066.06	0.00	0.00	0.00
12,100.00	90.00	0.00	5,737.00	6,146.10	-500.12	6,165.83	0.00	0.00	0.00
12,200.00	90.00	0.00	5,737.00	6,246.10	-500.12	6,265.60	0.00	0.00	0.00



WOG

Planning Report

Database:	LandmarkEDM	Local Co-ordinate Reference:	Well Horsetail #07H-0613
Company:	Whiting Petroleum Corp.	TVD Reference:	KBE @ 4933.00usft
Project:	Weld County, CO	MD Reference:	KBE @ 4933.00usft
Site:	Sec 7-T10N-R57W	North Reference:	True
Well:	Horsetail #07H-0613	Survey Calculation Method:	Minimum Curvature
Wellbore:	Hz		
Design:	Design #1		

Planned Survey										
Measured Depth (usft)	Inclination (°)	Azimuth (°)	Vertical Depth (usft)	+N/-S (usft)	+E/-W (usft)	Vertical Section (usft)	Dogleg Rate (°/100ft)	Build Rate (°/100ft)	Turn Rate (°/100ft)	
12,300.00	90.00	0.00	5,737.00	6,346.10	-500.12	6,365.37	0.00	0.00	0.00	
12,400.00	90.00	0.00	5,737.00	6,446.10	-500.12	6,465.15	0.00	0.00	0.00	
12,500.00	90.00	0.00	5,737.00	6,546.10	-500.12	6,564.92	0.00	0.00	0.00	
12,600.00	90.00	0.00	5,737.00	6,646.10	-500.12	6,664.69	0.00	0.00	0.00	
12,700.00	90.00	0.00	5,737.00	6,746.10	-500.12	6,764.47	0.00	0.00	0.00	
12,800.00	90.00	0.00	5,737.00	6,846.10	-500.12	6,864.24	0.00	0.00	0.00	
12,900.00	90.00	0.00	5,737.00	6,946.10	-500.12	6,964.01	0.00	0.00	0.00	
13,000.00	90.00	0.00	5,737.00	7,046.10	-500.12	7,063.79	0.00	0.00	0.00	
13,100.00	90.00	0.00	5,737.00	7,146.10	-500.12	7,163.56	0.00	0.00	0.00	
13,200.00	90.00	0.00	5,737.00	7,246.10	-500.12	7,263.33	0.00	0.00	0.00	
13,300.00	90.00	0.00	5,737.00	7,346.10	-500.12	7,363.10	0.00	0.00	0.00	
13,364.30	90.00	0.00	5,737.00	7,410.40	-500.12	7,427.26	0.00	0.00	0.00	
TD at 13364.30										

Design Targets									
Target Name	Dip Angle (°)	Dip Dir. (°)	TVD (usft)	+N/-S (usft)	+E/-W (usft)	Northing (usft)	Easting (usft)	Latitude	Longitude
- hit/miss target									
- Shape									
PBHL 0613A	0.00	0.00	5,737.00	7,410.40	-500.12	1,565,722.58	3,473,040.17	40° 52' 25.530 N	103° 47' 22.110 W
- plan hits target center									
- Point									

Casing Points					
Measured Depth (usft)	Vertical Depth (usft)	Name	Casing Diameter (in)	Hole Diameter (in)	
6,079.90	5,737.00	7" CSG PT/5 1/2" Marker	7.000	8.750	

Formations						
Measured Depth (usft)	Vertical Depth (usft)	Name	Lithology	Dip (°)	Dip Direction (°)	
1,560.61	1,550.00	Upper Pierre				
3,531.98	3,500.00	Hygiene				
3,683.63	3,650.00	Lower Pierre				
5,722.27	5,619.00	P200 Marker				
5,767.30	5,646.00	P300 Marker				
5,802.74	5,665.00	P350 Marker				
5,821.03	5,674.00	Sharon Springs				
5,840.59	5,683.00	Niobrara				
5,899.27	5,706.00	Top A Chalk				



WOG
Planning Report

Database:	LandmarkEDM	Local Co-ordinate Reference:	Well Horsetail #07H-0613
Company:	Whiting Petroleum Corp.	TVD Reference:	KBE @ 4933.00usft
Project:	Weld County, CO	MD Reference:	KBE @ 4933.00usft
Site:	Sec 7-T10N-R57W	North Reference:	True
Well:	Horsetail #07H-0613	Survey Calculation Method:	Minimum Curvature
Wellbore:	Hz		
Design:	Design #1		

Plan Annotations				
Measured Depth (usft)	Vertical Depth (usft)	Local Coordinates		Comment
		+N/-S (usft)	+E/-W (usft)	
300.00	300.00	0.00	0.00	Build 2°/100'
722.19	720.66	-19.25	-24.37	Hold 8.44° Inc
4,639.32	4,595.34	-375.75	-475.75	Drop 2°/100'
5,061.51	5,016.00	-395.00	-500.12	Hold Vertical
5,261.51	5,216.00	-395.00	-500.12	KOP, Build 11°/100'
6,079.90	5,737.00	126.00	-500.12	LP @ 90° Inc, Hold
13,364.30	5,737.00	7,410.40	-500.12	TD at 13364.30