



RADIAL BOND LOG
GAMMA RAY
CCL
TEMPERATURE

Company	KERR-MCGEE OIL AND GAS ONSHORE LP
Well	INOUYE 15-31A
Field	WATTENBERG
County	WELD
State	COLORADO
Company KERR-MCGEE OIL AND GAS	
Well INOUYE 15-31A	
Field WATTENBERG	
County WELD State COLORADO	
Location:	API # : 0512321220
LAT: 40.09140 LONG: -104.82270	
SEC 31 TWP 2N RGE 66W	Other Services NONE
Permanent Datum	GROUND LEVEL Elevation 4885 FT
Log Measured From	KELLY BUSHING
Drilling Measured From	KELLY BUSHING 16 FT
Elevation	K.B. 4901 FT D.F. 4902 FT G.L. 4885 FT

Date 21 - JAN - 2016

Run Number	ONE
Depth Driller	8047 FT
Depth Logger	2600 FT
Bottom Logged Interval	2550 FT
Top Log Interval	SURFACE
Open Hole Size	7.875 IN
Type Fluid	WATER
Density / Viscosity	8.3#
Max. Recorded Temp.	124 F
Estimated Cement Top	
Time Well Ready	ROA
Time Logger on Bottom	07:20
Equipment Number	061
Location	WINDSOR
Recorded By	B. NORRIS
Witnessed By	MR. LUIS MORALES

Borehole Record		Tubing Record					
Run Number	Bit	From	To	Size	Weight	From	To

Casing Record	Size	Wgt/Ft	Top	Bottom
Surface String	8.875 IN	24#	SURFACE	800 FT
Prot. String				
Production String	4.5 IN	11.6#	SURFACE	8047 FT
Liner				

<<< Fold Here >>>

All interpretations are opinions based on inferences from electrical or other measurements and we cannot and do not guarantee the accuracy or correctness of any interpretation, and we shall not, except in the case of gross or willful negligence on our part, be liable or responsible for any loss, costs, damages, or expenses incurred or sustained by anyone resulting from any interpretation made by any of our officers, agents or employees. These interpretations are also subject to our general terms and conditions set out in our current Price Schedule.

Comments

LOG CORRELATED TO ASAP BOND LOG DATED 10 - JAN - 2003
FREE PIPE EQUALS 82 mV
LOWER AMPLITUDE ABOVE 500 FT FROM LOWER HYDROSTATIC PRESSURE
MAX RECORDED TEMPERATURE 124 F
tHANK YOU FOR USING CUTTERS WIRELINE

Calibration Report

Database File: anadarko_cbl_012116.db
Dataset Pathname: pass5
Dataset Creation: Thu Jan 21 07:23:46 2016 by Log Std Casedhole 09061

Serial Number: 0001
Tool Model: 1.375TEMP
Performed: Thu Jan 21 06:09:55 2016

	Reference	Reading
Low Reference:	10.00 degF	100.00 cps
High Reference:	100.00 degF	1000.00cps
Gain:	0.10	
Offset:	10.00	
Delta Spacing	2	

Gamma Ray Calibration Report

Type / Serial: Probe / 275

SHOP CALIBRATION

Thu Aug 07 08:00:19 2008

	Counts/Sec.	Gain	Offset	Jig	Units
Background	35.0				cps
Calibrator	160.0				cps
		1.0000			GAPI/cps

PRIMARY VERIFICATION

Background	0.0				cps
Calibrator	0.0				cps
Difference				0.0	GAPI

BEFORE SURVEY VERIFICATION

Background	0.0				cps
Calibrator	0.0				cps
Difference				0.0	GAPI

AFTER SURVEY VERIFICATION

Background	0.0				cps
Calibrator	0.0				cps
Difference				0.0	GAPI

Segmented Cement Bond Log Calibration Report

Serial Number: Base
Tool Model: Probe

Calibration Casing Diameter: 5.500 in
Calibration Depth: 1874.357 ft

Master Calibration, performed Thu Jan 21 07:20:40 2016:

	Raw (v)		Calibrated (mv)		Results	
	Zero	Cal	Zero	Cal	Gain	Offset
3'	0.004	0.478	0.250	82.000	122.718	-0.475
CAL	0.002	0.582				
5'	0.003	0.086	0.250	82.000	994.500	-3.210
SUM						
S1	0.002	0.427	0.000	100.000	235.497	-0.532
S2	0.004	0.482	0.000	100.000	209.097	-0.768
S3	0.003	0.542	0.000	100.000	185.789	-0.649
S4	0.004	0.586	0.000	100.000	171.668	-0.650
S5	0.004	0.555	0.000	100.000	181.464	-0.687
S6	0.004	0.450	0.000	100.000	224.088	-0.815
S7	0.004	0.368	0.000	100.000	274.789	1.003

S7	0.004	0.300	0.000	100.000	274.769	-1.003
S8	0.003	0.373	0.000	100.000	270.765	-0.945

Internal Reference Calibration, performed Mon Dec 17 10:22:27 2012:

	Raw (v)		Calibrated (v)		Results	
	Zero	Cal	Zero	Cal	Gain	Offset
CAL	0.000	0.000	0.002	0.582	1.000	0.000

Air Zero Calibration, performed Mon Jun 17 09:51:43 2013:

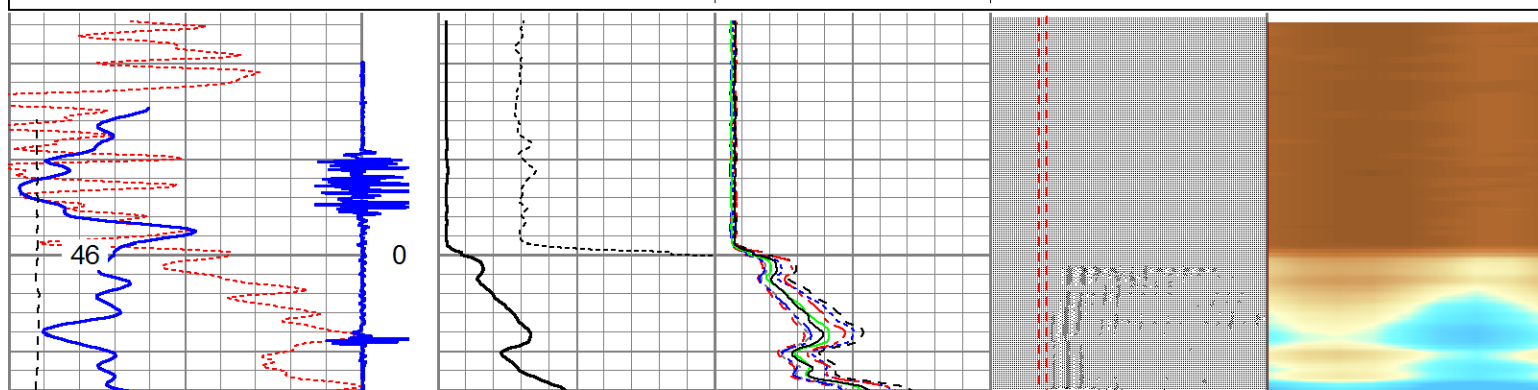
	Raw (v)		Calibrated (v)		Results	
	Zero		Zero		Offset	
3'	0.000		0.000		0.000	
5'	0.000		0.000		0.000	
SUM						
S1	0.000		0.000		0.000	
S2	0.000		0.000		0.000	
S3	0.000		0.000		0.000	
S4	0.000		0.000		0.000	
S5	0.000		0.000		0.000	
S6	0.000		0.000		0.000	
S7	0.000		0.000		0.000	
S8	0.000		0.000		0.000	

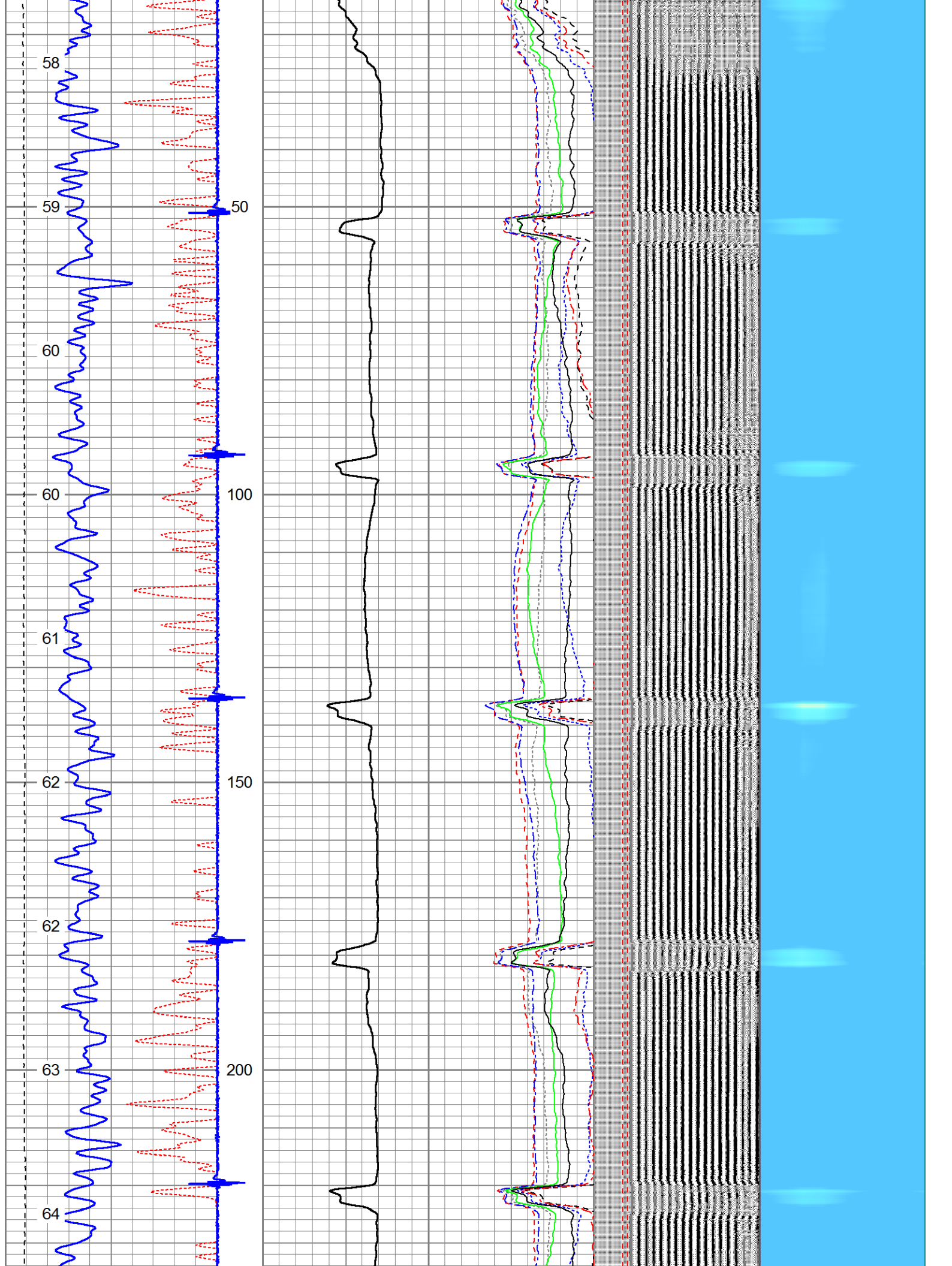


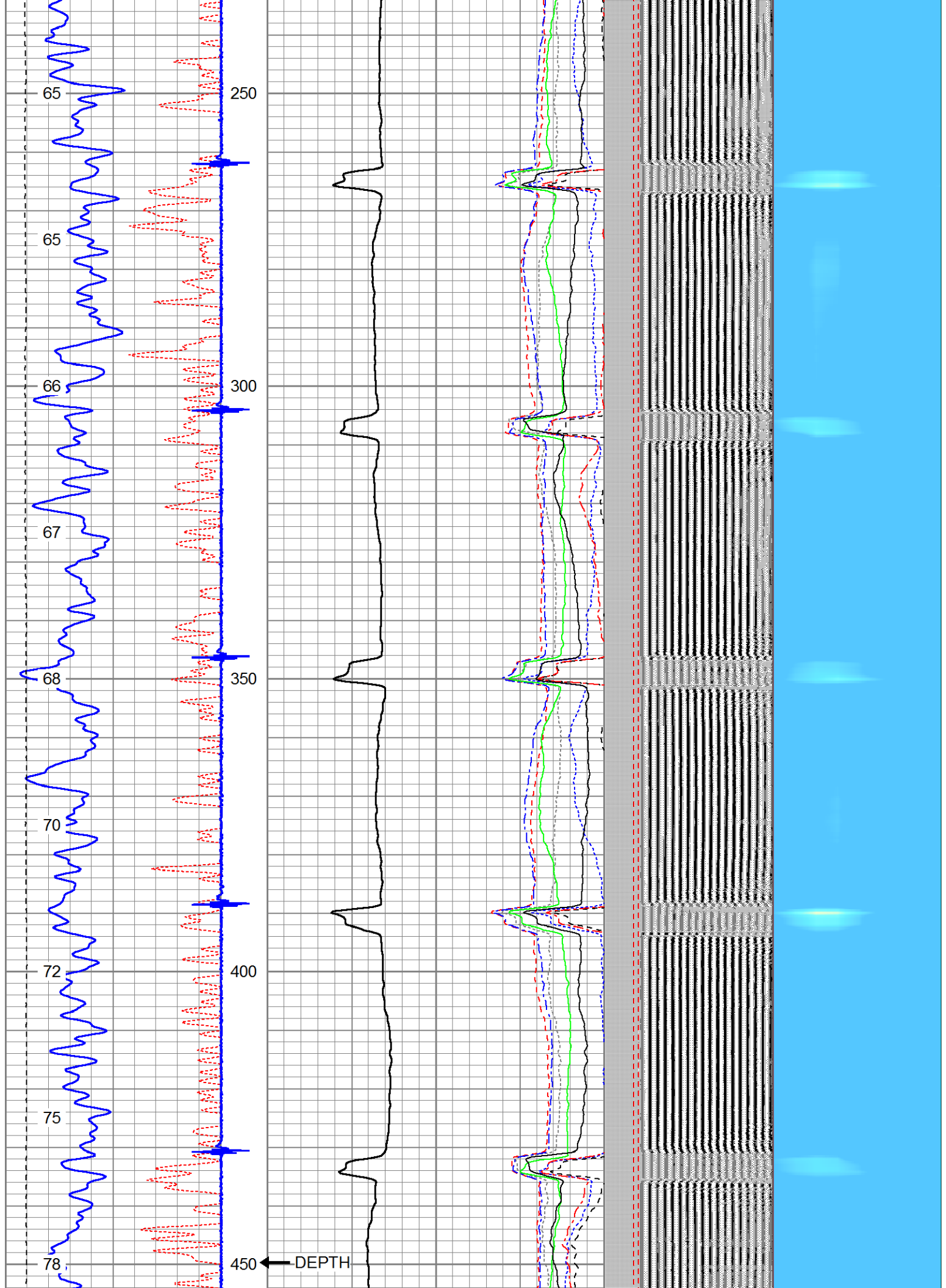
MAIN PASS 0 PSI

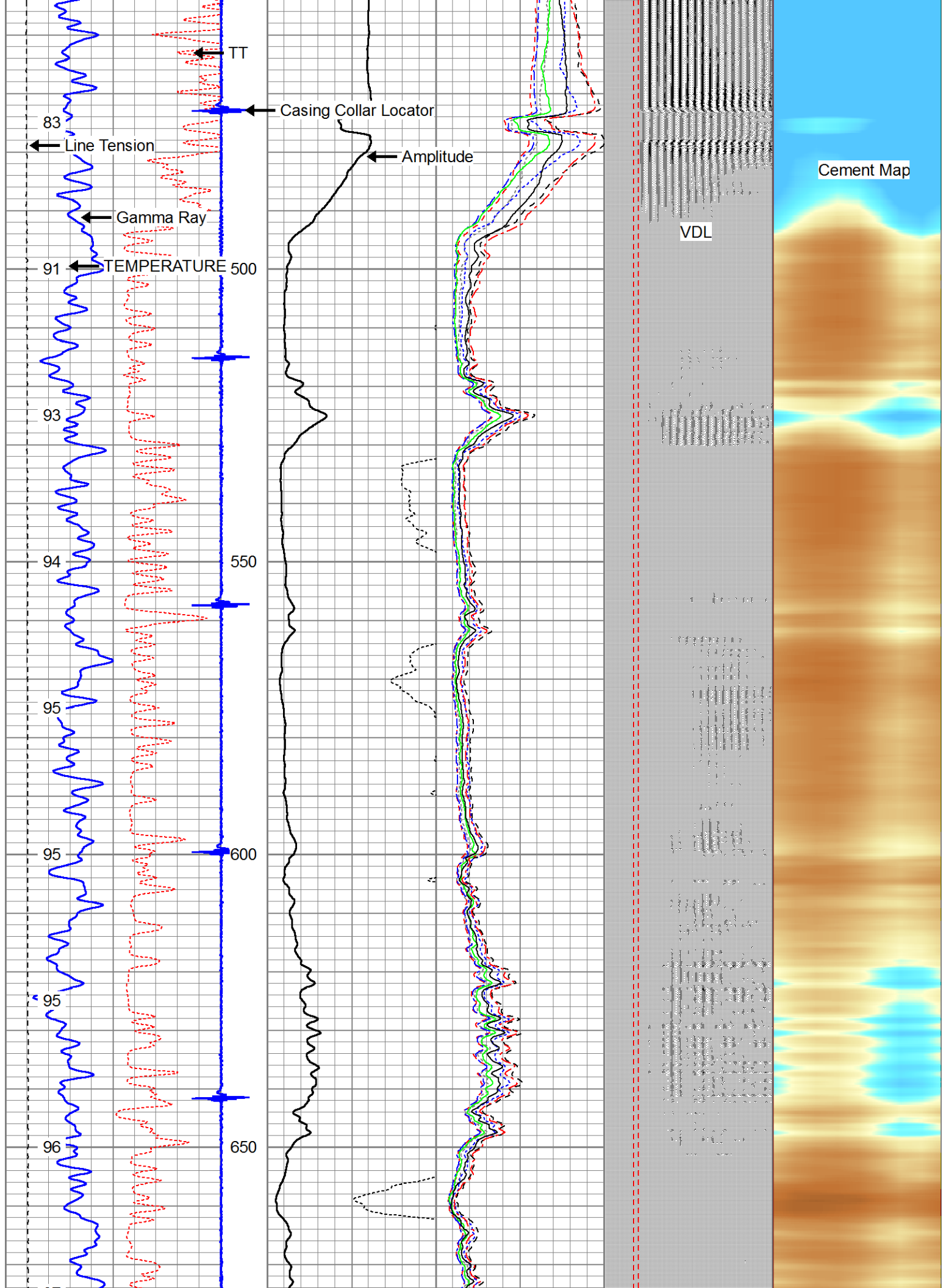
Database File: anadarko_cbl_012116.db
 Dataset Pathname: pass5
 Presentation Format: rbl55
 Dataset Creation: Thu Jan 21 07:23:46 2016 by Log Std Casedhole 09061
 Charted by: Depth in Feet scaled 1:240

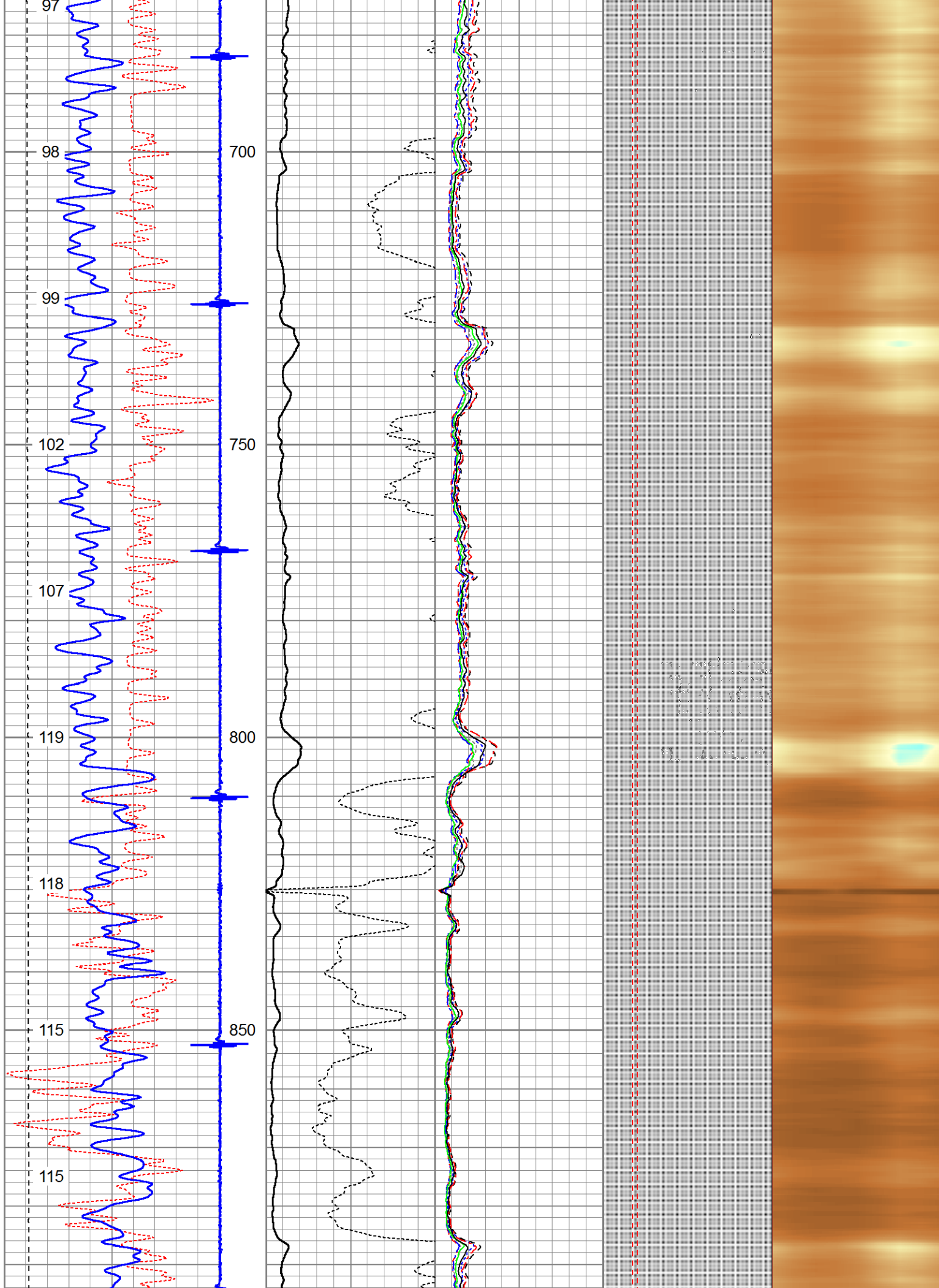
343	TT (usec)	243	0	Amplitude (mV)	100	-5	AMPS2	150	200	VDL	1200	Cement Map	80
0	GR (GAPI)	200		Amplified Amplitude		-5	AMPS3	150					
0	LTEN (lb)	4000	0	(mV)	10	-5	AMPS4	150					
TEMP		CCL				-5	AMPS5	150					
(degF)						-5	AMPS6	150					
						-5	AMPS7	150					
						-5	AMPS8	150					
						-5	AMPS1	150					

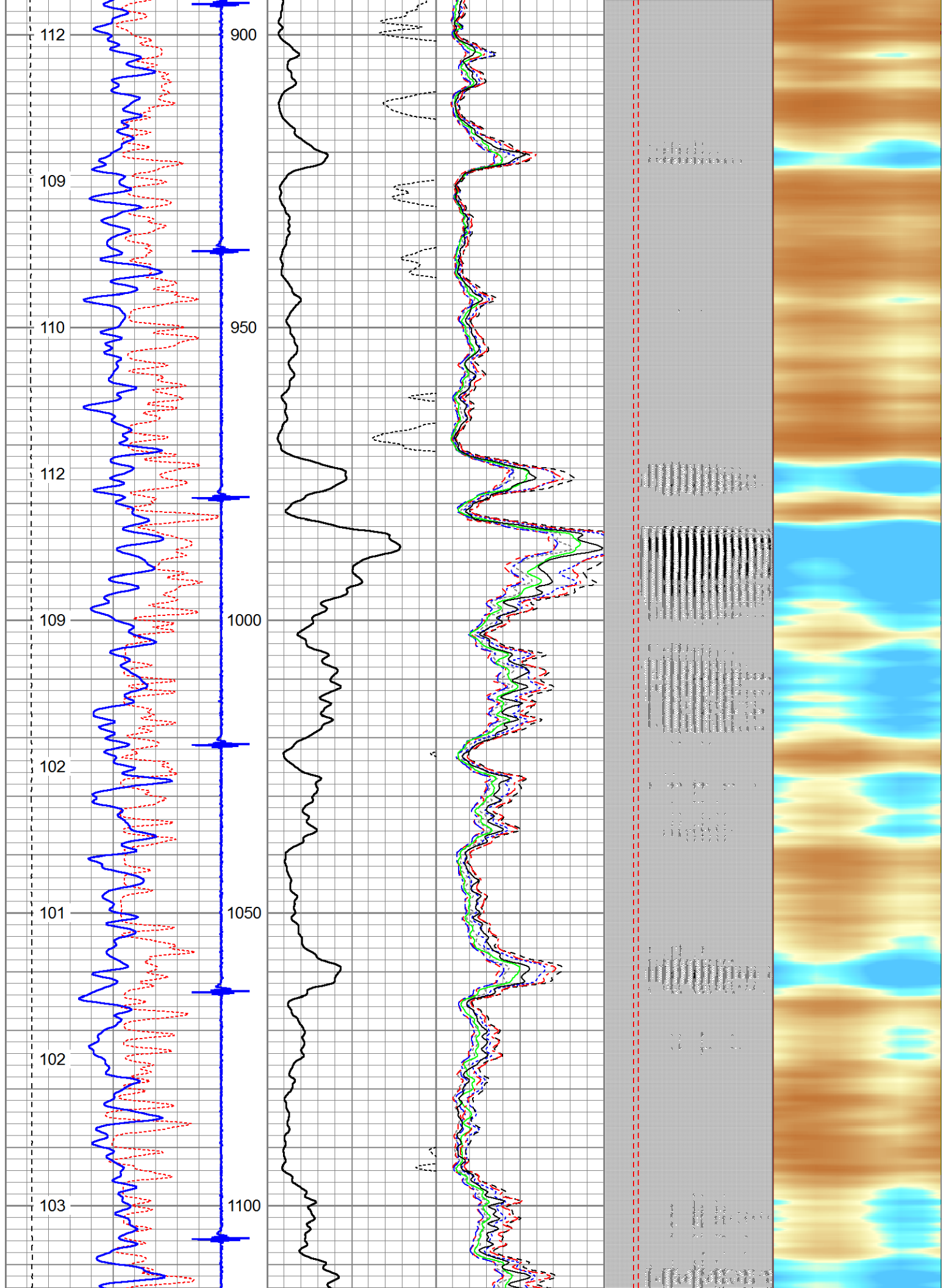


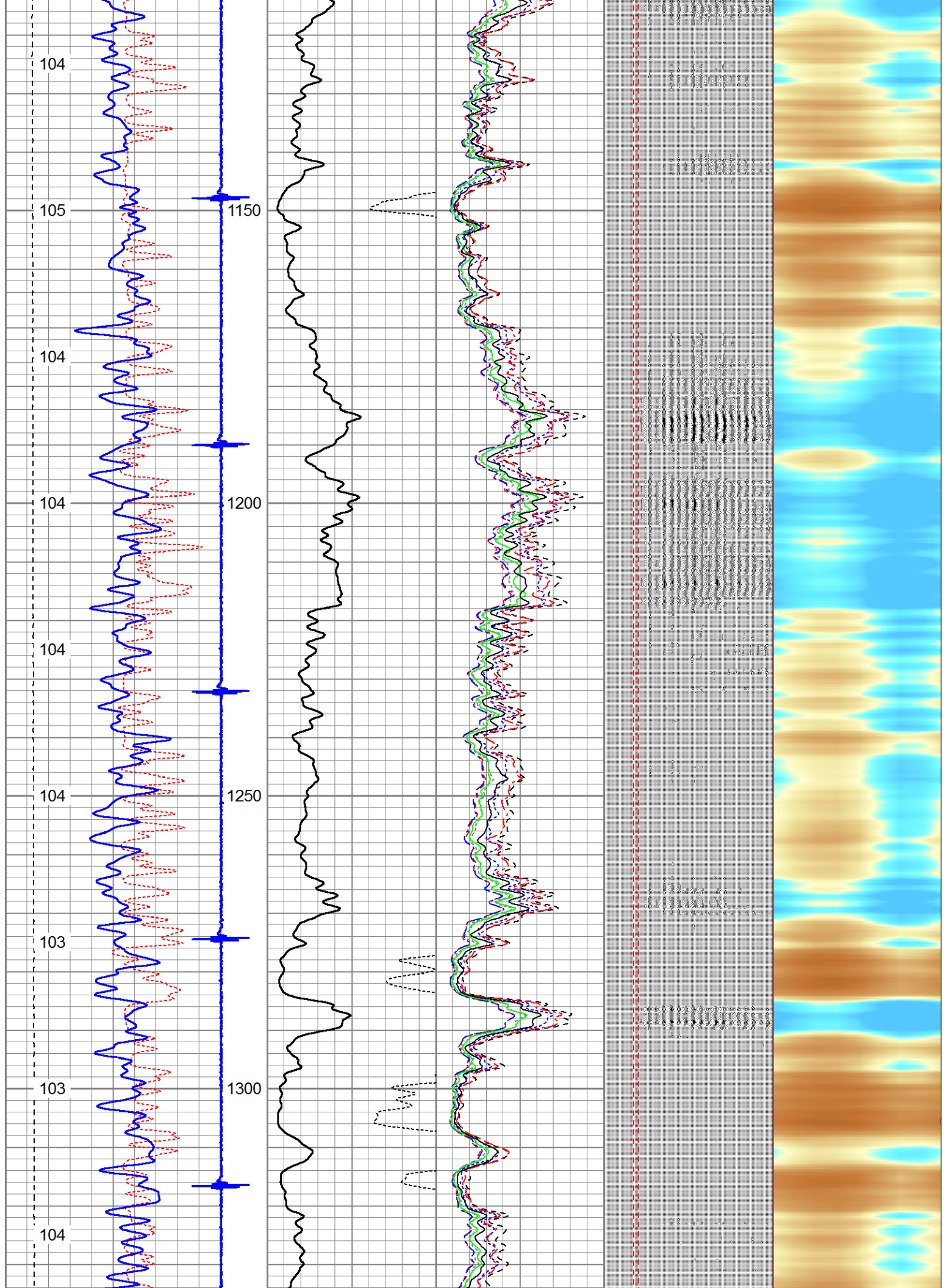


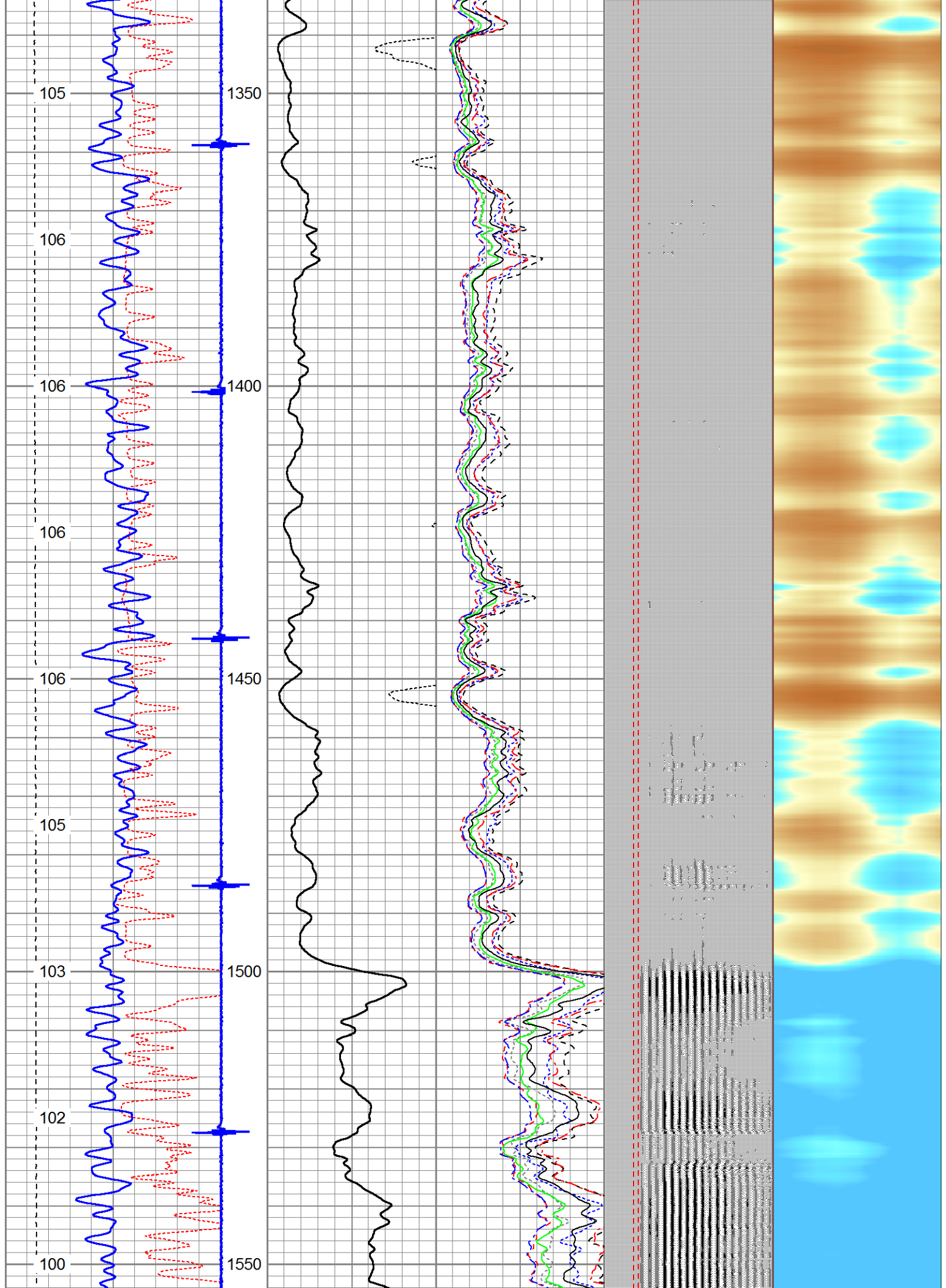


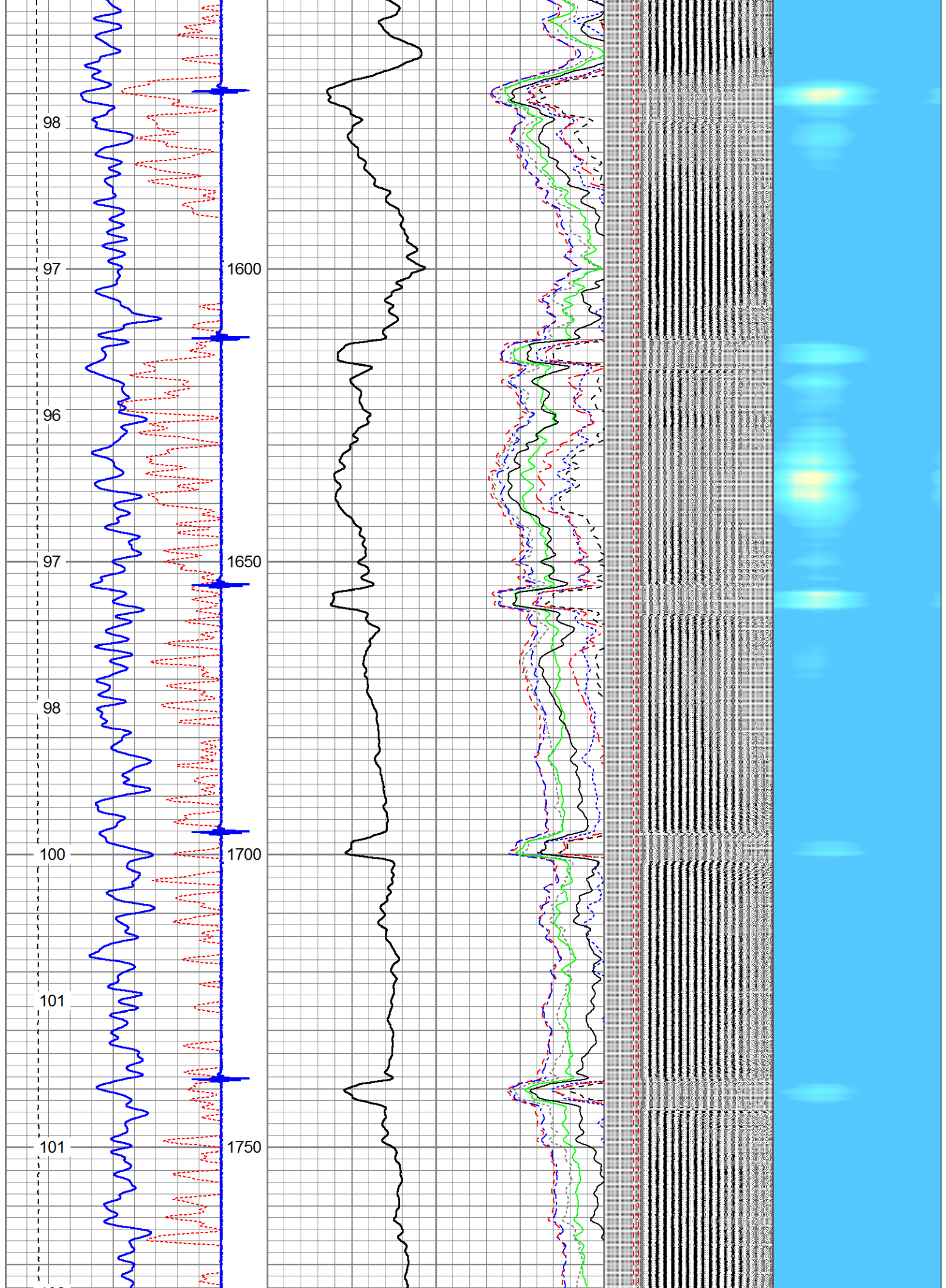


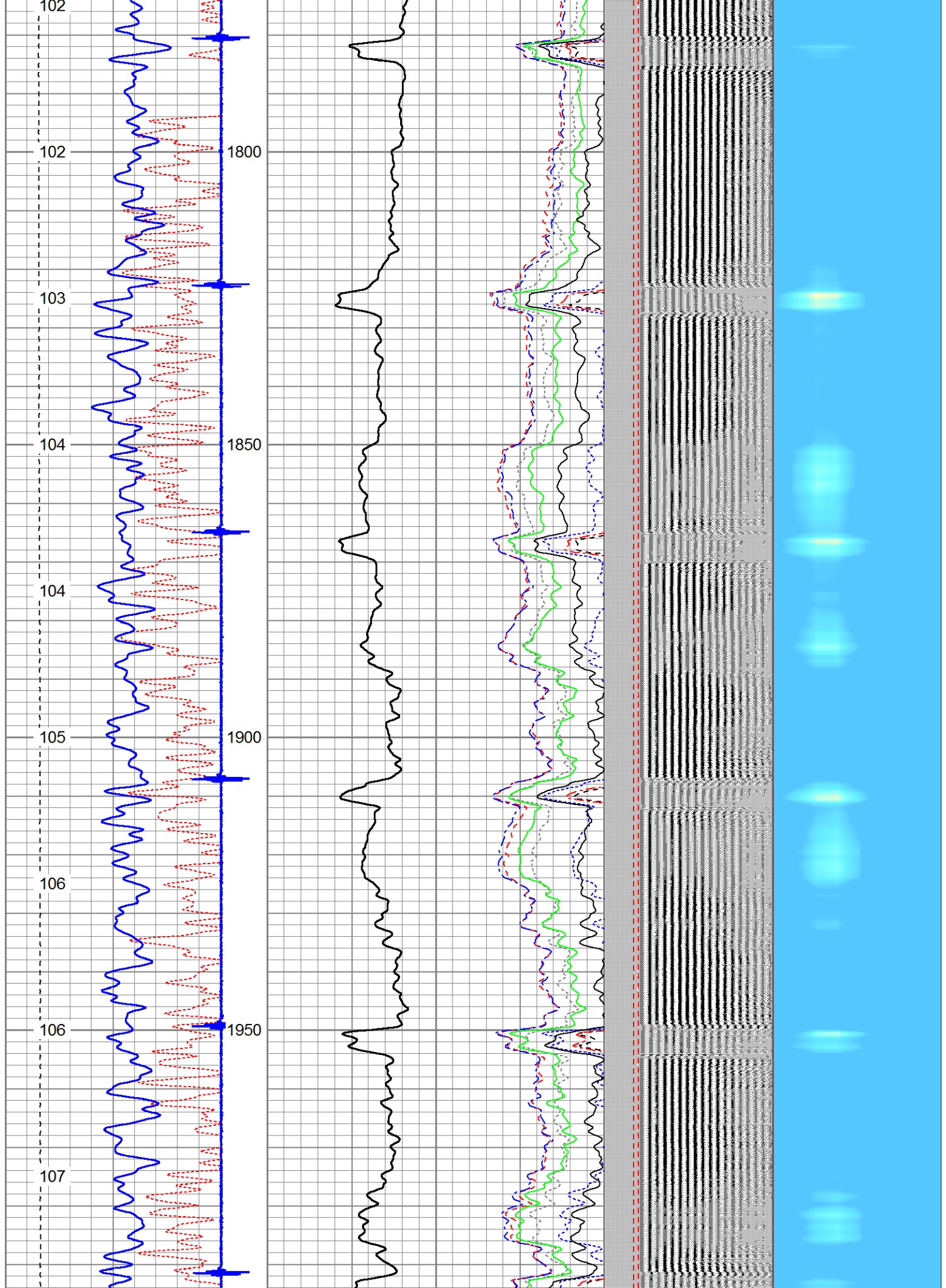


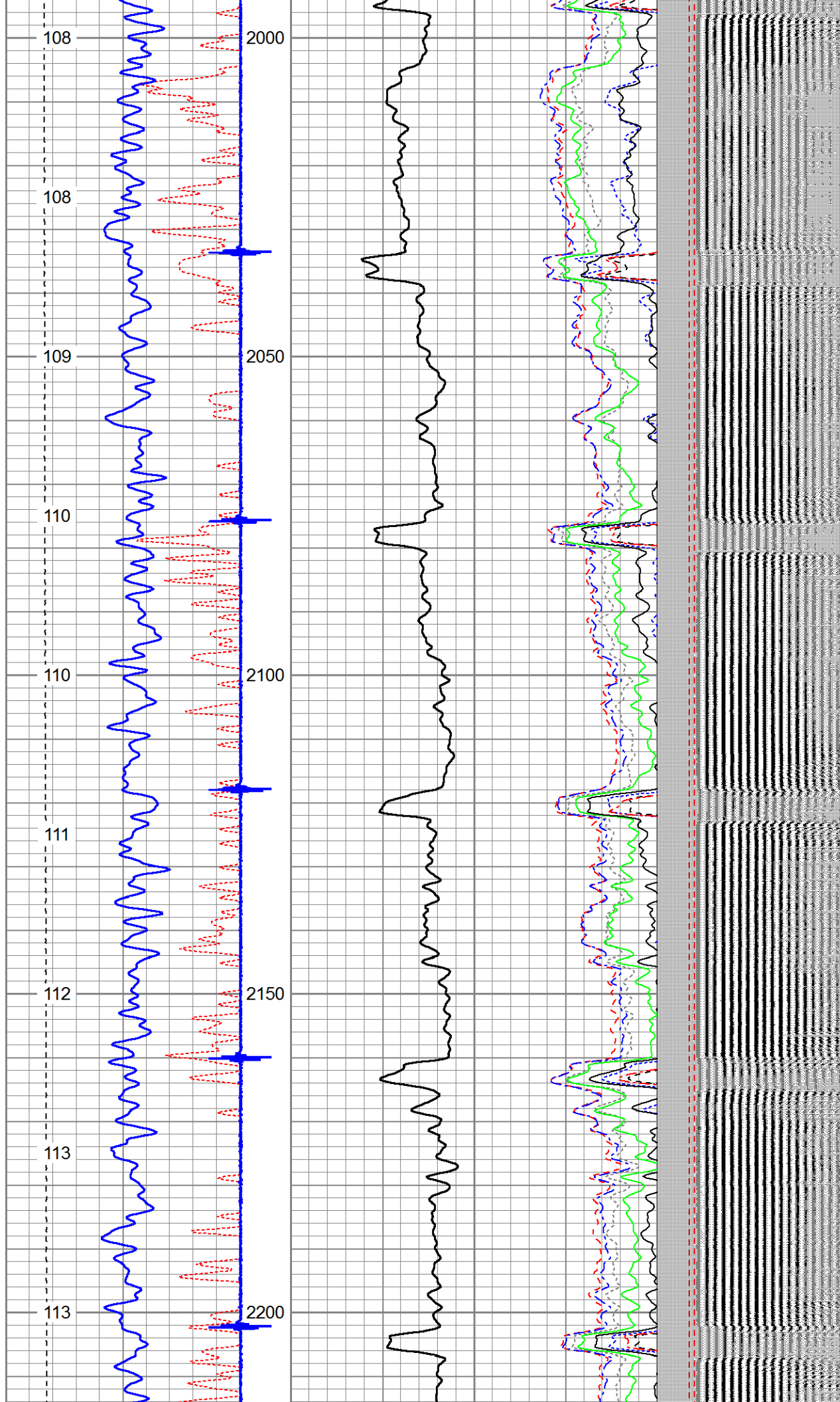


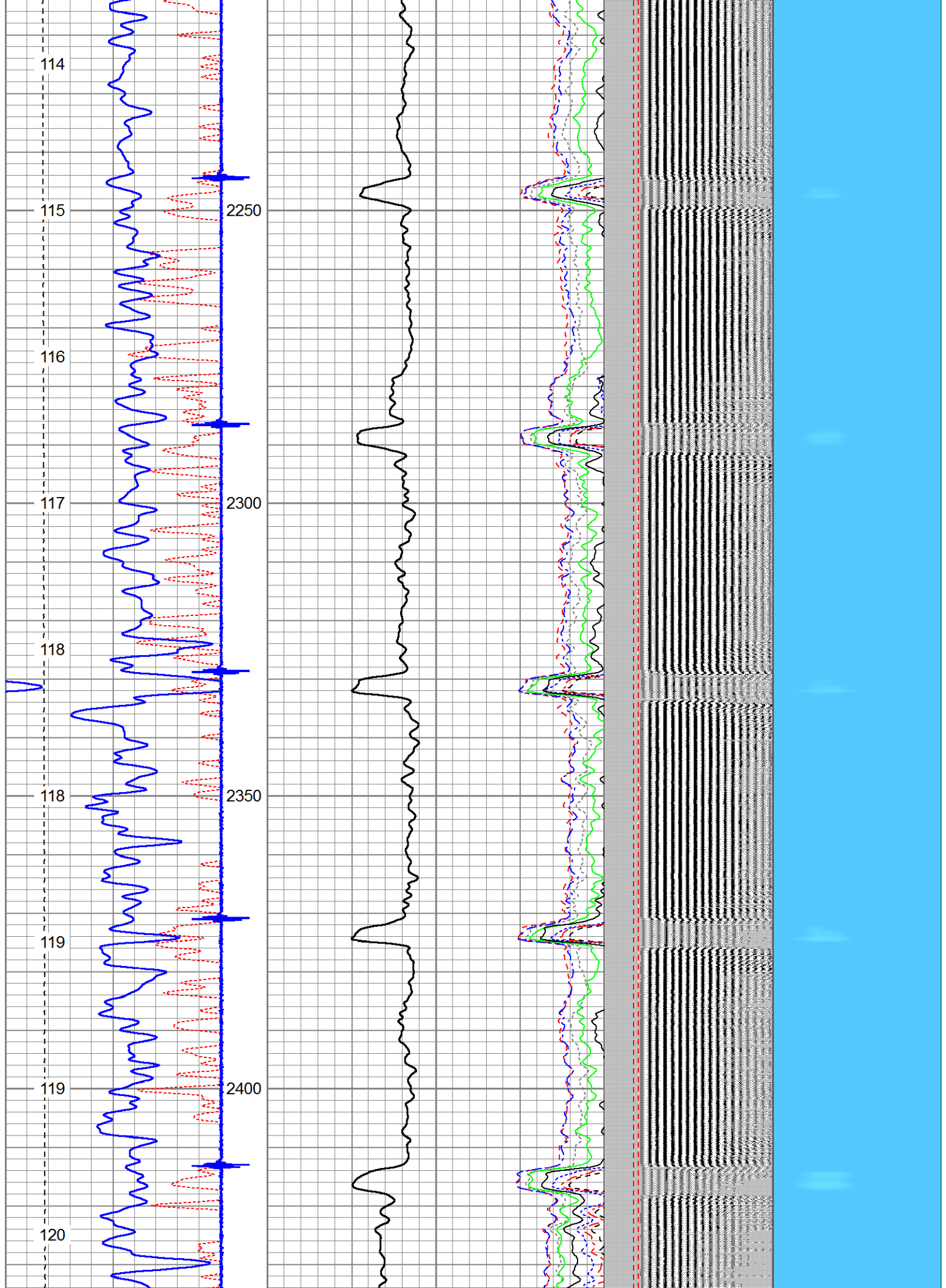


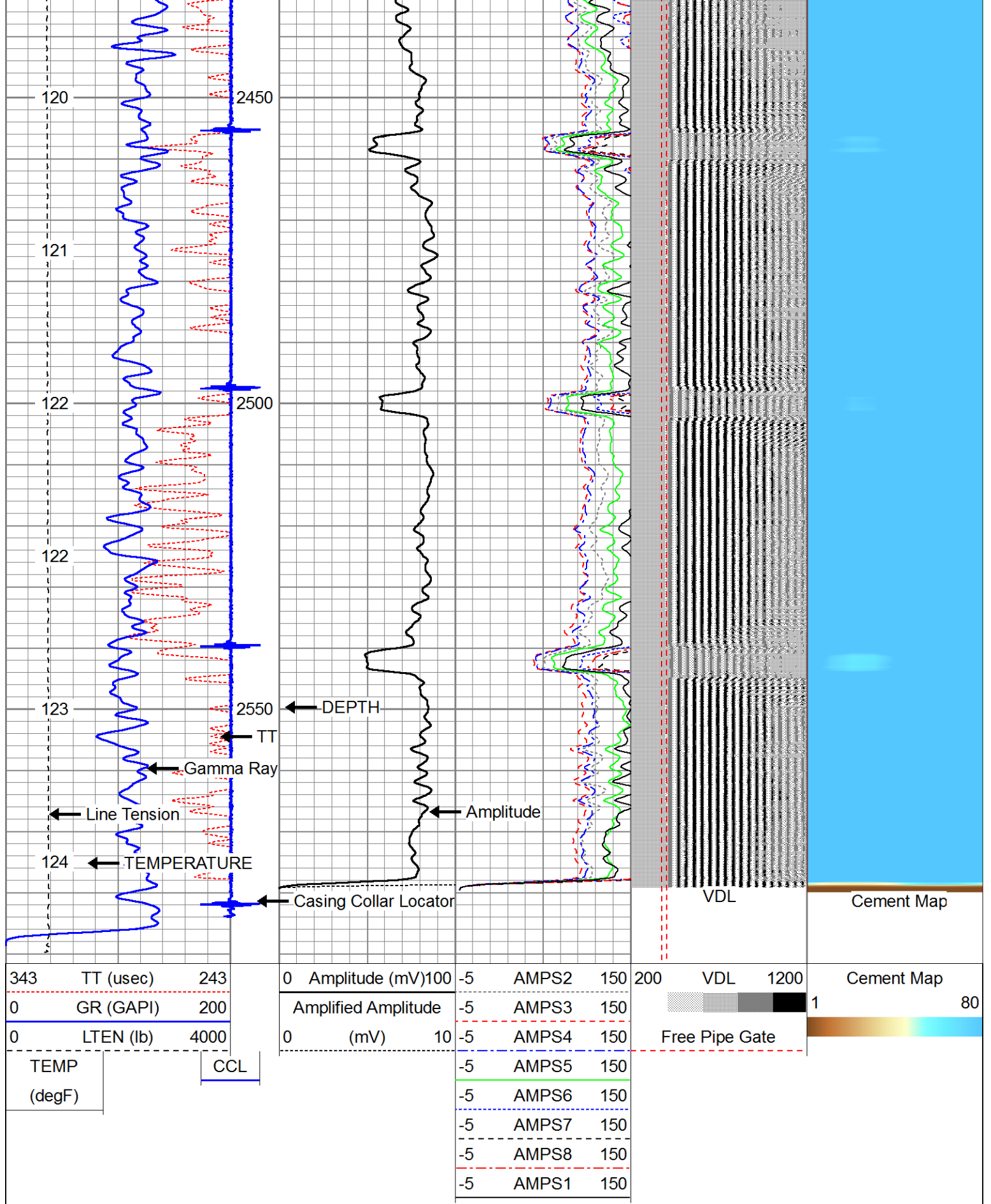













Sensor	Offset (ft)	Schematic	Description	Len (ft)	OD (in)	Wt (lb)
			Roller Roller Centralizer	0.58	2.75	

Tool Name	Depth (ft)	Tool Description	Length (ft)	Weight (lb)	O.D. (in)
WVF3FT	11.91		8.92	2.75	90.00
WVFCAL	11.91				
WVFS1	11.91				
WVFS2	11.91				
WVFS3	11.91				
WVFS4	11.91				
WVFS5	11.91				
WVFS6	11.91				
WVFS7	11.91				
WVFS8	11.91				
WVF5FT	10.83				
CCL	6.03	Roller Roller Centralizer	0.58	2.75	
GR	3.29	GR-Probe (275) Probe 2.75" 4 Channel Pulse	4.60	2.75	30.00
TEMP	0.17	TEMP-1.375TEMP (0001) Temperature Tool	2.40	1.38	30.00

Dataset: anadarko_cbl_012116.db: field/well/run1/pass5

Total Length: 17.08 ft

Total Weight: 150.00 lb

O.D. 2.75 in



Field	WATTENBERG
County	WELD
State	COLORADO