

**PROJECT DETAILS: Weld County, CO NAD 83**

Geodetic System: US State Plane 1983  
 Datum: North American Datum 1983  
 Ellipsoid: GRS 1980  
 Zone: Colorado Northern Zone  
 System Datum: Mean Sea Level  
 Local North: True

Project: Weld County, CO NAD 83  
 Site: Anschutz Equus Farms 3-62-4\_5 NENE Pad  
 Well: Anschutz Equus Farms 03-62-04-0916B2  
 Wellbore: OH  
 Design: Plan #1



Azinuths to True North  
 Magnetic North: 8.22°

Magnetic Field  
 Strength: 52547.3snT  
 Dip Angle: 66.92°  
 Date: 2/12/2016  
 Model: BGGM2015

**SECTION DETAILS**

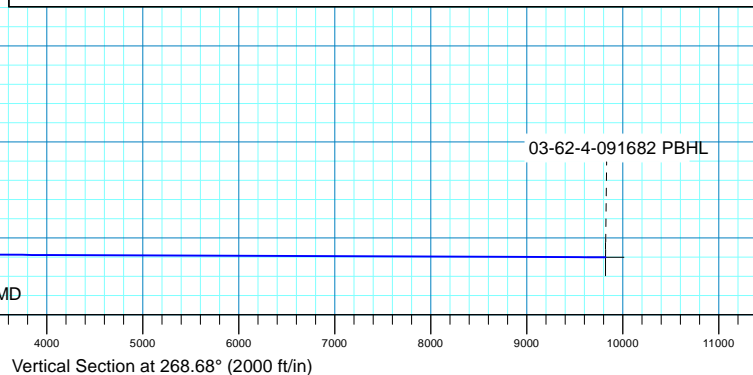
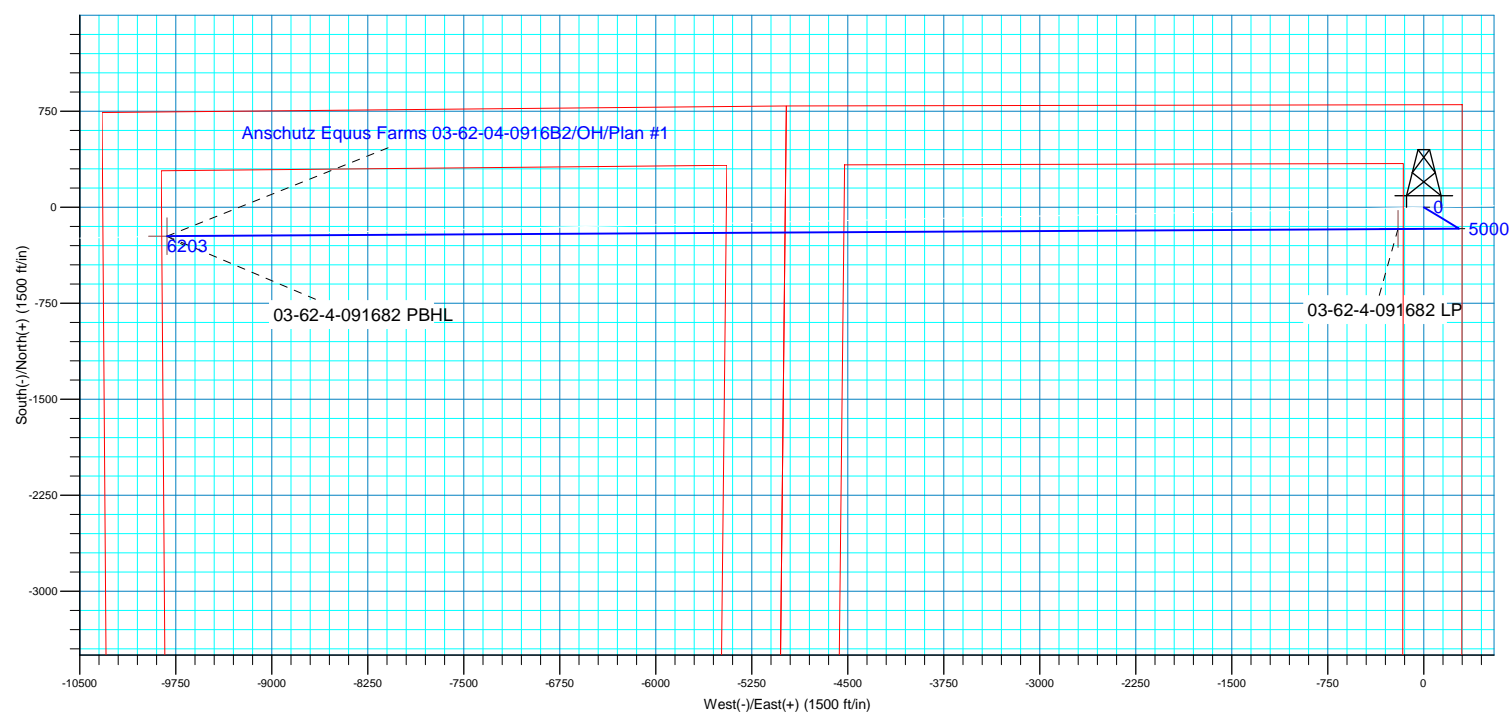
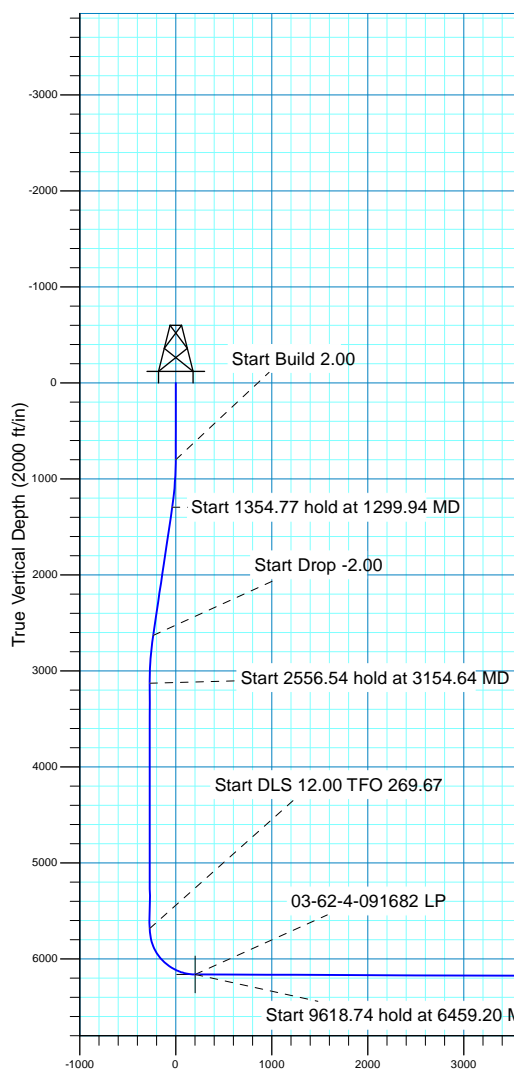
MD	Inc	Azi	TVD	+N/-S	+E/-W	Dleg	TFace	VSect
0.00	0.00	0.00	0.00	0.00	0.00	0.00	0.00	0.00
800.00	0.00	0.00	800.00	0.00	0.00	0.00	0.00	0.00
1299.94	10.00	121.26	1297.41	-22.58	37.19	2.00	121.26	-36.67
2654.70	10.00	121.26	2631.59	-144.65	238.27	0.00	0.00	-234.88
3154.64	0.00	0.00	3129.00	-167.23	275.46	2.00	180.00	-271.54
5711.18	0.00	0.00	5685.54	-167.23	275.46	0.00	0.00	-271.54
6459.20	89.76	269.67	6163.00	-169.99	-200.01	12.00	269.67	203.87
16077.94	89.76	269.67	6203.00	-225.73	-9818.51	0.00	0.00	9821.11

Plan: Plan #1 (Anschutz Equus Farms 03-62-04-0916B2/OH)

Created By: rscott Date: 19:37, February 15 2016

**WELL DETAILS: Anschutz Equus Farms 03-62-04-0916B2**

GL 4613 @ 4613.00ft (Original Well Elev) 4613.00  
 Northing Easting Latitude Longitude  
 0.00 0.00 1339701.61 3329199.41 40° 15' 35.530 N 104° 19' 13.450 W





## **Bill Barrett Corp.**

**Weld County, CO NAD 83**

**Anschutz Equus Farms 3-62-4\_5 NENE Pad**

**Anschutz Equus Farms 03-62-04-0916B2**

**OH**

**Plan: Plan #1**

## **Standard Planning Report**

**15 February, 2016**



<b>Database:</b>	Casper District	<b>Local Co-ordinate Reference:</b>	Well Anschutz Equus Farms 03-62-04-0916B2
<b>Company:</b>	Bill Barrett Corp.	<b>TVD Reference:</b>	GL 4613 @ 4613.00ft (Original Well Elev)
<b>Project:</b>	Weld County, CO NAD 83	<b>MD Reference:</b>	GL 4613 @ 4613.00ft (Original Well Elev)
<b>Site:</b>	Anschutz Equus Farms 3-62-4_5 NENE Pad	<b>North Reference:</b>	True
<b>Well:</b>	Anschutz Equus Farms 03-62-04-0916B2	<b>Survey Calculation Method:</b>	Minimum Curvature
<b>Wellbore:</b>	OH		
<b>Design:</b>	Plan #1		

<b>Project</b>	Weld County, CO NAD 83		
<b>Map System:</b>	US State Plane 1983	<b>System Datum:</b>	Mean Sea Level
<b>Geo Datum:</b>	North American Datum 1983		
<b>Map Zone:</b>	Colorado Northern Zone		

<b>Site</b>	Anschutz Equus Farms 3-62-4_5 NENE Pad, SECTION 4, T3N, R62W, 6th P.M.			
<b>Site Position:</b>		<b>Northing:</b>	1,339,656.09 usft	<b>Latitude:</b> 40° 15' 35.080 N
<b>From:</b>	Lat/Long	<b>Easting:</b>	3,329,200.02 usft	<b>Longitude:</b> 104° 19' 13.450 W
<b>Position Uncertainty:</b>	0.00 ft	<b>Slot Radius:</b>	13.200 in	<b>Grid Convergence:</b> 0.76 °

<b>Well</b>	Anschutz Equus Farms 03-62-04-0916B2, 801 FNL 300 FEL			
<b>Well Position</b>	<b>+N/-S</b>	45.53 ft	<b>Northing:</b>	1,339,701.61 usft
	<b>+E/-W</b>	0.00 ft	<b>Easting:</b>	3,329,199.41 usft
<b>Position Uncertainty</b>		0.00 ft	<b>Wellhead Elevation:</b>	0.00 ft
			<b>Ground Level:</b>	4,613.00 ft

<b>Wellbore</b>	OH				
<b>Magnetics</b>	<b>Model Name</b>	<b>Sample Date</b>	<b>Declination (°)</b>	<b>Dip Angle (°)</b>	<b>Field Strength (nT)</b>
	BGGM2015	2/12/2016	8.22	66.92	52,547

<b>Design</b>	Plan #1			
<b>Audit Notes:</b>				
<b>Version:</b>	<b>Phase:</b>	PLAN	<b>Tie On Depth:</b>	0.00
<b>Vertical Section:</b>	<b>Depth From (TVD) (ft)</b>	<b>+N/-S (ft)</b>	<b>+E/-W (ft)</b>	<b>Direction (°)</b>
	0.00	0.00	0.00	268.68

<b>Plan Sections</b>										
Measured Depth (ft)	Inclination (°)	Azimuth (°)	Vertical Depth (ft)	+N/-S (ft)	+E/-W (ft)	Dogleg Rate (°/100ft)	Build Rate (°/100ft)	Turn Rate (°/100ft)	TFO (°)	Target
0.00	0.00	0.00	0.00	0.00	0.00	0.00	0.00	0.00	0.00	
800.00	0.00	0.00	800.00	0.00	0.00	0.00	0.00	0.00	0.00	
1,299.94	10.00	121.26	1,297.41	-22.58	37.19	2.00	2.00	0.00	121.26	
2,654.71	10.00	121.26	2,631.59	-144.65	238.27	0.00	0.00	0.00	0.00	
3,154.64	0.00	0.00	3,129.00	-167.23	275.46	2.00	-2.00	0.00	180.00	
5,711.18	0.00	0.00	5,685.54	-167.23	275.46	0.00	0.00	0.00	0.00	
6,459.20	89.76	269.67	6,163.00	-169.99	-200.01	12.00	12.00	-12.08	269.67	
16,077.94	89.76	269.67	6,203.00	-225.73	-9,818.51	0.00	0.00	0.00	0.00	03-62-4-091682 PBHI

<b>Database:</b>	Casper District	<b>Local Co-ordinate Reference:</b>	Well Anschutz Equus Farms 03-62-04-0916B2
<b>Company:</b>	Bill Barrett Corp.	<b>TVD Reference:</b>	GL 4613 @ 4613.00ft (Original Well Elev)
<b>Project:</b>	Weld County, CO NAD 83	<b>MD Reference:</b>	GL 4613 @ 4613.00ft (Original Well Elev)
<b>Site:</b>	Anschutz Equus Farms 3-62-4_5 NENE Pad	<b>North Reference:</b>	True
<b>Well:</b>	Anschutz Equus Farms 03-62-04-0916B2	<b>Survey Calculation Method:</b>	Minimum Curvature
<b>Wellbore:</b>	OH		
<b>Design:</b>	Plan #1		

Planned Survey									
Measured Depth (ft)	Inclination (°)	Azimuth (°)	Vertical Depth (ft)	+N/-S (ft)	+E/-W (ft)	Vertical Section (ft)	Dogleg Rate (°/100ft)	Build Rate (°/100ft)	Turn Rate (°/100ft)
0.00	0.00	0.00	0.00	0.00	0.00	0.00	0.00	0.00	0.00
100.00	0.00	0.00	100.00	0.00	0.00	0.00	0.00	0.00	0.00
200.00	0.00	0.00	200.00	0.00	0.00	0.00	0.00	0.00	0.00
300.00	0.00	0.00	300.00	0.00	0.00	0.00	0.00	0.00	0.00
400.00	0.00	0.00	400.00	0.00	0.00	0.00	0.00	0.00	0.00
500.00	0.00	0.00	500.00	0.00	0.00	0.00	0.00	0.00	0.00
600.00	0.00	0.00	600.00	0.00	0.00	0.00	0.00	0.00	0.00
700.00	0.00	0.00	700.00	0.00	0.00	0.00	0.00	0.00	0.00
800.00	0.00	0.00	800.00	0.00	0.00	0.00	0.00	0.00	0.00
<b>Start Build 2.00</b>									
900.00	2.00	121.26	899.98	-0.91	1.49	-1.47	2.00	2.00	0.00
1,000.00	4.00	121.26	999.84	-3.62	5.97	-5.88	2.00	2.00	0.00
1,100.00	6.00	121.26	1,099.45	-8.14	13.41	-13.22	2.00	2.00	0.00
1,200.00	8.00	121.26	1,198.70	-14.47	23.83	-23.49	2.00	2.00	0.00
1,299.94	10.00	121.26	1,297.41	-22.58	37.19	-36.67	2.00	2.00	0.00
<b>Start 1354.77 hold at 1299.94 MD</b>									
1,300.00	10.00	121.26	1,297.47	-22.59	37.20	-36.67	0.00	0.00	0.00
1,400.00	10.00	121.26	1,395.95	-31.60	52.05	-51.31	0.00	0.00	0.00
1,500.00	10.00	121.26	1,494.43	-40.61	66.89	-65.94	0.00	0.00	0.00
1,600.00	10.00	121.26	1,592.91	-49.62	81.73	-80.57	0.00	0.00	0.00
1,700.00	10.00	121.26	1,691.39	-58.63	96.57	-95.20	0.00	0.00	0.00
1,800.00	10.00	121.26	1,789.87	-67.64	111.41	-109.83	0.00	0.00	0.00
1,900.00	10.00	121.26	1,888.35	-76.65	126.25	-124.46	0.00	0.00	0.00
2,000.00	10.00	121.26	1,986.83	-85.66	141.10	-139.09	0.00	0.00	0.00
2,100.00	10.00	121.26	2,085.31	-94.67	155.94	-153.72	0.00	0.00	0.00
2,200.00	10.00	121.26	2,183.80	-103.68	170.78	-168.35	0.00	0.00	0.00
2,300.00	10.00	121.26	2,282.28	-112.69	185.62	-182.98	0.00	0.00	0.00
2,400.00	10.00	121.26	2,380.76	-121.70	200.46	-197.61	0.00	0.00	0.00
2,500.00	10.00	121.26	2,479.24	-130.71	215.30	-212.24	0.00	0.00	0.00
2,600.00	10.00	121.26	2,577.72	-139.72	230.15	-226.87	0.00	0.00	0.00
2,654.71	10.00	121.26	2,631.59	-144.65	238.27	-234.88	0.00	0.00	0.00
<b>Start Drop -2.00</b>									
2,700.00	9.09	121.26	2,676.26	-148.55	244.69	-241.21	2.00	-2.00	0.00
2,800.00	7.09	121.26	2,775.26	-155.85	256.72	-253.07	2.00	-2.00	0.00
2,900.00	5.09	121.26	2,874.69	-161.36	265.79	-262.01	2.00	-2.00	0.00
3,000.00	3.09	121.26	2,974.43	-165.06	271.89	-268.03	2.00	-2.00	0.00
3,100.00	1.09	121.26	3,074.36	-166.96	275.01	-271.10	2.00	-2.00	0.00
3,154.64	0.00	0.00	3,129.00	-167.23	275.46	-271.54	2.00	-2.00	0.00
<b>Start 2556.54 hold at 3154.64 MD</b>									
3,200.00	0.00	0.00	3,174.36	-167.23	275.46	-271.54	0.00	0.00	0.00
3,300.00	0.00	0.00	3,274.36	-167.23	275.46	-271.54	0.00	0.00	0.00
3,400.00	0.00	0.00	3,374.36	-167.23	275.46	-271.54	0.00	0.00	0.00
3,500.00	0.00	0.00	3,474.36	-167.23	275.46	-271.54	0.00	0.00	0.00
3,600.00	0.00	0.00	3,574.36	-167.23	275.46	-271.54	0.00	0.00	0.00
3,700.00	0.00	0.00	3,674.36	-167.23	275.46	-271.54	0.00	0.00	0.00
3,800.00	0.00	0.00	3,774.36	-167.23	275.46	-271.54	0.00	0.00	0.00
3,900.00	0.00	0.00	3,874.36	-167.23	275.46	-271.54	0.00	0.00	0.00
4,000.00	0.00	0.00	3,974.36	-167.23	275.46	-271.54	0.00	0.00	0.00
4,100.00	0.00	0.00	4,074.36	-167.23	275.46	-271.54	0.00	0.00	0.00
4,200.00	0.00	0.00	4,174.36	-167.23	275.46	-271.54	0.00	0.00	0.00
4,300.00	0.00	0.00	4,274.36	-167.23	275.46	-271.54	0.00	0.00	0.00
4,400.00	0.00	0.00	4,374.36	-167.23	275.46	-271.54	0.00	0.00	0.00
4,500.00	0.00	0.00	4,474.36	-167.23	275.46	-271.54	0.00	0.00	0.00

<b>Database:</b>	Casper District	<b>Local Co-ordinate Reference:</b>	Well Anschutz Equus Farms 03-62-04-0916B2
<b>Company:</b>	Bill Barrett Corp.	<b>TVD Reference:</b>	GL 4613 @ 4613.00ft (Original Well Elev)
<b>Project:</b>	Weld County, CO NAD 83	<b>MD Reference:</b>	GL 4613 @ 4613.00ft (Original Well Elev)
<b>Site:</b>	Anschutz Equus Farms 3-62-4_5 NENE Pad	<b>North Reference:</b>	True
<b>Well:</b>	Anschutz Equus Farms 03-62-04-0916B2	<b>Survey Calculation Method:</b>	Minimum Curvature
<b>Wellbore:</b>	OH		
<b>Design:</b>	Plan #1		

Planned Survey									
Measured Depth (ft)	Inclination (°)	Azimuth (°)	Vertical Depth (ft)	+N/-S (ft)	+E/-W (ft)	Vertical Section (ft)	Dogleg Rate (°/100ft)	Build Rate (°/100ft)	Turn Rate (°/100ft)
4,600.00	0.00	0.00	4,574.36	-167.23	275.46	-271.54	0.00	0.00	0.00
4,700.00	0.00	0.00	4,674.36	-167.23	275.46	-271.54	0.00	0.00	0.00
4,800.00	0.00	0.00	4,774.36	-167.23	275.46	-271.54	0.00	0.00	0.00
4,900.00	0.00	0.00	4,874.36	-167.23	275.46	-271.54	0.00	0.00	0.00
5,000.00	0.00	0.00	4,974.36	-167.23	275.46	-271.54	0.00	0.00	0.00
5,100.00	0.00	0.00	5,074.36	-167.23	275.46	-271.54	0.00	0.00	0.00
5,200.00	0.00	0.00	5,174.36	-167.23	275.46	-271.54	0.00	0.00	0.00
5,300.00	0.00	0.00	5,274.36	-167.23	275.46	-271.54	0.00	0.00	0.00
5,400.00	0.00	0.00	5,374.36	-167.23	275.46	-271.54	0.00	0.00	0.00
5,500.00	0.00	0.00	5,474.36	-167.23	275.46	-271.54	0.00	0.00	0.00
5,600.00	0.00	0.00	5,574.36	-167.23	275.46	-271.54	0.00	0.00	0.00
5,700.00	0.00	0.00	5,674.36	-167.23	275.46	-271.54	0.00	0.00	0.00
5,711.18	0.00	0.00	5,685.54	-167.23	275.46	-271.54	0.00	0.00	0.00
Start DLS 12.00 TFO 269.67									
5,800.00	10.66	269.67	5,773.84	-167.28	267.22	-263.31	12.00	12.00	0.00
5,900.00	22.66	269.67	5,869.47	-167.44	238.61	-234.70	12.00	12.00	0.00
6,000.00	34.66	269.67	5,957.06	-167.72	190.74	-186.84	12.00	12.00	0.00
6,100.00	46.66	269.67	6,032.79	-168.10	125.71	-121.81	12.00	12.00	0.00
6,200.00	58.66	269.67	6,093.33	-168.56	46.35	-42.46	12.00	12.00	0.00
6,300.00	70.66	269.67	6,136.06	-169.08	-43.86	47.73	12.00	12.00	0.00
6,400.00	82.66	269.67	6,159.09	-169.64	-140.98	144.84	12.00	12.00	0.00
6,459.20	89.76	269.67	6,163.00	-169.99	-200.01	203.87	12.00	12.00	0.00
Start 9618.74 hold at 6459.20 MD - 03-62-4-091682 LP									
6,500.00	89.76	269.67	6,163.17	-170.22	-240.81	244.66	0.00	0.00	0.00
6,600.00	89.76	269.67	6,163.59	-170.80	-340.81	344.64	0.00	0.00	0.00
6,700.00	89.76	269.67	6,164.00	-171.38	-440.81	444.63	0.00	0.00	0.00
6,800.00	89.76	269.67	6,164.42	-171.96	-540.80	544.61	0.00	0.00	0.00
6,900.00	89.76	269.67	6,164.83	-172.54	-640.80	644.60	0.00	0.00	0.00
7,000.00	89.76	269.67	6,165.25	-173.12	-740.80	744.58	0.00	0.00	0.00
7,100.00	89.76	269.67	6,165.67	-173.70	-840.80	844.57	0.00	0.00	0.00
7,200.00	89.76	269.67	6,166.08	-174.28	-940.79	944.55	0.00	0.00	0.00
7,300.00	89.76	269.67	6,166.50	-174.86	-1,040.79	1,044.54	0.00	0.00	0.00
7,400.00	89.76	269.67	6,166.91	-175.44	-1,140.79	1,144.52	0.00	0.00	0.00
7,500.00	89.76	269.67	6,167.33	-176.02	-1,240.79	1,244.50	0.00	0.00	0.00
7,600.00	89.76	269.67	6,167.74	-176.60	-1,340.78	1,344.49	0.00	0.00	0.00
7,700.00	89.76	269.67	6,168.16	-177.18	-1,440.78	1,444.47	0.00	0.00	0.00
7,800.00	89.76	269.67	6,168.58	-177.76	-1,540.78	1,544.46	0.00	0.00	0.00
7,900.00	89.76	269.67	6,168.99	-178.34	-1,640.78	1,644.44	0.00	0.00	0.00
8,000.00	89.76	269.67	6,169.41	-178.91	-1,740.77	1,744.43	0.00	0.00	0.00
8,100.00	89.76	269.67	6,169.82	-179.49	-1,840.77	1,844.41	0.00	0.00	0.00
8,200.00	89.76	269.67	6,170.24	-180.07	-1,940.77	1,944.39	0.00	0.00	0.00
8,300.00	89.76	269.67	6,170.66	-180.65	-2,040.77	2,044.38	0.00	0.00	0.00
8,400.00	89.76	269.67	6,171.07	-181.23	-2,140.76	2,144.36	0.00	0.00	0.00
8,500.00	89.76	269.67	6,171.49	-181.81	-2,240.76	2,244.35	0.00	0.00	0.00
8,600.00	89.76	269.67	6,171.90	-182.39	-2,340.76	2,344.33	0.00	0.00	0.00
8,700.00	89.76	269.67	6,172.32	-182.97	-2,440.76	2,444.32	0.00	0.00	0.00
8,800.00	89.76	269.67	6,172.73	-183.55	-2,540.75	2,544.30	0.00	0.00	0.00
8,900.00	89.76	269.67	6,173.15	-184.13	-2,640.75	2,644.28	0.00	0.00	0.00
9,000.00	89.76	269.67	6,173.57	-184.71	-2,740.75	2,744.27	0.00	0.00	0.00
9,100.00	89.76	269.67	6,173.98	-185.29	-2,840.75	2,844.25	0.00	0.00	0.00
9,200.00	89.76	269.67	6,174.40	-185.87	-2,940.74	2,944.24	0.00	0.00	0.00
9,300.00	89.76	269.67	6,174.81	-186.45	-3,040.74	3,044.22	0.00	0.00	0.00
9,400.00	89.76	269.67	6,175.23	-187.03	-3,140.74	3,144.21	0.00	0.00	0.00

<b>Database:</b>	Casper District	<b>Local Co-ordinate Reference:</b>	Well Anschutz Equus Farms 03-62-04-0916B2
<b>Company:</b>	Bill Barrett Corp.	<b>TVD Reference:</b>	GL 4613 @ 4613.00ft (Original Well Elev)
<b>Project:</b>	Weld County, CO NAD 83	<b>MD Reference:</b>	GL 4613 @ 4613.00ft (Original Well Elev)
<b>Site:</b>	Anschutz Equus Farms 3-62-4_5 NENE Pad	<b>North Reference:</b>	True
<b>Well:</b>	Anschutz Equus Farms 03-62-04-0916B2	<b>Survey Calculation Method:</b>	Minimum Curvature
<b>Wellbore:</b>	OH		
<b>Design:</b>	Plan #1		

Planned Survey									
Measured Depth (ft)	Inclination (°)	Azimuth (°)	Vertical Depth (ft)	+N/-S (ft)	+E/-W (ft)	Vertical Section (ft)	Dogleg Rate (°/100ft)	Build Rate (°/100ft)	Turn Rate (°/100ft)
9,500.00	89.76	269.67	6,175.65	-187.61	-3,240.74	3,244.19	0.00	0.00	0.00
9,600.00	89.76	269.67	6,176.06	-188.19	-3,340.73	3,344.18	0.00	0.00	0.00
9,700.00	89.76	269.67	6,176.48	-188.77	-3,440.73	3,444.16	0.00	0.00	0.00
9,800.00	89.76	269.67	6,176.89	-189.35	-3,540.73	3,544.14	0.00	0.00	0.00
9,900.00	89.76	269.67	6,177.31	-189.93	-3,640.73	3,644.13	0.00	0.00	0.00
10,000.00	89.76	269.67	6,177.73	-190.51	-3,740.72	3,744.11	0.00	0.00	0.00
10,100.00	89.76	269.67	6,178.14	-191.08	-3,840.72	3,844.10	0.00	0.00	0.00
10,200.00	89.76	269.67	6,178.56	-191.66	-3,940.72	3,944.08	0.00	0.00	0.00
10,300.00	89.76	269.67	6,178.97	-192.24	-4,040.71	4,044.07	0.00	0.00	0.00
10,400.00	89.76	269.67	6,179.39	-192.82	-4,140.71	4,144.05	0.00	0.00	0.00
10,500.00	89.76	269.67	6,179.80	-193.40	-4,240.71	4,244.03	0.00	0.00	0.00
10,600.00	89.76	269.67	6,180.22	-193.98	-4,340.71	4,344.02	0.00	0.00	0.00
10,700.00	89.76	269.67	6,180.64	-194.56	-4,440.70	4,444.00	0.00	0.00	0.00
10,800.00	89.76	269.67	6,181.05	-195.14	-4,540.70	4,543.99	0.00	0.00	0.00
10,900.00	89.76	269.67	6,181.47	-195.72	-4,640.70	4,643.97	0.00	0.00	0.00
11,000.00	89.76	269.67	6,181.88	-196.30	-4,740.70	4,743.96	0.00	0.00	0.00
11,100.00	89.76	269.67	6,182.30	-196.88	-4,840.69	4,843.94	0.00	0.00	0.00
11,200.00	89.76	269.67	6,182.72	-197.46	-4,940.69	4,943.93	0.00	0.00	0.00
11,300.00	89.76	269.67	6,183.13	-198.04	-5,040.69	5,043.91	0.00	0.00	0.00
11,400.00	89.76	269.67	6,183.55	-198.62	-5,140.69	5,143.89	0.00	0.00	0.00
11,500.00	89.76	269.67	6,183.96	-199.20	-5,240.68	5,243.88	0.00	0.00	0.00
11,600.00	89.76	269.67	6,184.38	-199.78	-5,340.68	5,343.86	0.00	0.00	0.00
11,700.00	89.76	269.67	6,184.79	-200.36	-5,440.68	5,443.85	0.00	0.00	0.00
11,800.00	89.76	269.67	6,185.21	-200.94	-5,540.68	5,543.83	0.00	0.00	0.00
11,900.00	89.76	269.67	6,185.63	-201.52	-5,640.67	5,643.82	0.00	0.00	0.00
12,000.00	89.76	269.67	6,186.04	-202.10	-5,740.67	5,743.80	0.00	0.00	0.00
12,100.00	89.76	269.67	6,186.46	-202.67	-5,840.67	5,843.78	0.00	0.00	0.00
12,200.00	89.76	269.67	6,186.87	-203.25	-5,940.67	5,943.77	0.00	0.00	0.00
12,300.00	89.76	269.67	6,187.29	-203.83	-6,040.66	6,043.75	0.00	0.00	0.00
12,400.00	89.76	269.67	6,187.71	-204.41	-6,140.66	6,143.74	0.00	0.00	0.00
12,500.00	89.76	269.67	6,188.12	-204.99	-6,240.66	6,243.72	0.00	0.00	0.00
12,600.00	89.76	269.67	6,188.54	-205.57	-6,340.66	6,343.71	0.00	0.00	0.00
12,700.00	89.76	269.67	6,188.95	-206.15	-6,440.65	6,443.69	0.00	0.00	0.00
12,800.00	89.76	269.67	6,189.37	-206.73	-6,540.65	6,543.67	0.00	0.00	0.00
12,900.00	89.76	269.67	6,189.78	-207.31	-6,640.65	6,643.66	0.00	0.00	0.00
13,000.00	89.76	269.67	6,190.20	-207.89	-6,740.65	6,743.64	0.00	0.00	0.00
13,100.00	89.76	269.67	6,190.62	-208.47	-6,840.64	6,843.63	0.00	0.00	0.00
13,200.00	89.76	269.67	6,191.03	-209.05	-6,940.64	6,943.61	0.00	0.00	0.00
13,300.00	89.76	269.67	6,191.45	-209.63	-7,040.64	7,043.60	0.00	0.00	0.00
13,400.00	89.76	269.67	6,191.86	-210.21	-7,140.64	7,143.58	0.00	0.00	0.00
13,500.00	89.76	269.67	6,192.28	-210.79	-7,240.63	7,243.57	0.00	0.00	0.00
13,600.00	89.76	269.67	6,192.70	-211.37	-7,340.63	7,343.55	0.00	0.00	0.00
13,700.00	89.76	269.67	6,193.11	-211.95	-7,440.63	7,443.53	0.00	0.00	0.00
13,800.00	89.76	269.67	6,193.53	-212.53	-7,540.63	7,543.52	0.00	0.00	0.00
13,900.00	89.76	269.67	6,193.94	-213.11	-7,640.62	7,643.50	0.00	0.00	0.00
14,000.00	89.76	269.67	6,194.36	-213.69	-7,740.62	7,743.49	0.00	0.00	0.00
14,100.00	89.76	269.67	6,194.77	-214.27	-7,840.62	7,843.47	0.00	0.00	0.00
14,200.00	89.76	269.67	6,195.19	-214.84	-7,940.62	7,943.46	0.00	0.00	0.00
14,300.00	89.76	269.67	6,195.61	-215.42	-8,040.61	8,043.44	0.00	0.00	0.00
14,400.00	89.76	269.67	6,196.02	-216.00	-8,140.61	8,143.42	0.00	0.00	0.00
14,500.00	89.76	269.67	6,196.44	-216.58	-8,240.61	8,243.41	0.00	0.00	0.00
14,600.00	89.76	269.67	6,196.85	-217.16	-8,340.61	8,343.39	0.00	0.00	0.00
14,700.00	89.76	269.67	6,197.27	-217.74	-8,440.60	8,443.38	0.00	0.00	0.00

<b>Database:</b>	Casper District	<b>Local Co-ordinate Reference:</b>	Well Anschutz Equus Farms 03-62-04-0916B2
<b>Company:</b>	Bill Barrett Corp.	<b>TVD Reference:</b>	GL 4613 @ 4613.00ft (Original Well Elev)
<b>Project:</b>	Weld County, CO NAD 83	<b>MD Reference:</b>	GL 4613 @ 4613.00ft (Original Well Elev)
<b>Site:</b>	Anschutz Equus Farms 3-62-4_5 NENE Pad	<b>North Reference:</b>	True
<b>Well:</b>	Anschutz Equus Farms 03-62-04-0916B2	<b>Survey Calculation Method:</b>	Minimum Curvature
<b>Wellbore:</b>	OH		
<b>Design:</b>	Plan #1		

Planned Survey										
Measured Depth (ft)	Inclination (°)	Azimuth (°)	Vertical Depth (ft)	+N/-S (ft)	+E/-W (ft)	Vertical Section (ft)	Dogleg Rate (°/100ft)	Build Rate (°/100ft)	Turn Rate (°/100ft)	
14,800.00	89.76	269.67	6,197.69	-218.32	-8,540.60	8,543.36	0.00	0.00	0.00	
14,900.00	89.76	269.67	6,198.10	-218.90	-8,640.60	8,643.35	0.00	0.00	0.00	
15,000.00	89.76	269.67	6,198.52	-219.48	-8,740.60	8,743.33	0.00	0.00	0.00	
15,100.00	89.76	269.67	6,198.93	-220.06	-8,840.59	8,843.32	0.00	0.00	0.00	
15,200.00	89.76	269.67	6,199.35	-220.64	-8,940.59	8,943.30	0.00	0.00	0.00	
15,300.00	89.76	269.67	6,199.77	-221.22	-9,040.59	9,043.28	0.00	0.00	0.00	
15,400.00	89.76	269.67	6,200.18	-221.80	-9,140.59	9,143.27	0.00	0.00	0.00	
15,500.00	89.76	269.67	6,200.60	-222.38	-9,240.58	9,243.25	0.00	0.00	0.00	
15,600.00	89.76	269.67	6,201.01	-222.96	-9,340.58	9,343.24	0.00	0.00	0.00	
15,700.00	89.76	269.67	6,201.43	-223.54	-9,440.58	9,443.22	0.00	0.00	0.00	
15,800.00	89.76	269.67	6,201.84	-224.12	-9,540.58	9,543.21	0.00	0.00	0.00	
15,900.00	89.76	269.67	6,202.26	-224.70	-9,640.57	9,643.19	0.00	0.00	0.00	
16,000.00	89.76	269.67	6,202.68	-225.28	-9,740.57	9,743.17	0.00	0.00	0.00	
16,077.94	89.76	269.67	6,203.00	-225.73	-9,818.51	9,821.11	0.00	0.00	0.00	
TD at 16077.94 - 03-62-4-091682 PBHL										

Design Targets										
Target Name	Dip Angle (°)	Dip Dir. (°)	TVD (ft)	+N/-S (ft)	+E/-W (ft)	Northing (usft)	Easting (usft)	Latitude	Longitude	
03-62-4-091682 LP	0.00	0.00	6,163.00	-169.99	-200.01	1,339,528.97	3,329,001.68	40° 15' 33.850 N	104° 19' 16.030 W	
- hit/miss target										
- Shape										
- plan misses target center by 0.01ft at 6459.20ft MD (6163.00 TVD, -169.99 N, -200.01 E)										
- Point										
03-62-4-091682 PBHL	0.00	0.00	6,203.00	-225.73	-9,818.51	1,339,345.30	3,319,384.79	40° 15' 33.280 N	104° 21' 20.100 W	
- plan hits target center										
- Point										

Plan Annotations					
Measured Depth (ft)	Vertical Depth (ft)	Local Coordinates			
		+N/-S (ft)	+E/-W (ft)	Comment	
800.00	800.00	0.00	0.00	Start Build 2.00	
1,299.94	1,297.41	-22.58	37.19	Start 1354.77 hold at 1299.94 MD	
2,654.71	2,631.59	-144.65	238.27	Start Drop -2.00	
3,154.64	3,129.00	-167.23	275.46	Start 2556.54 hold at 3154.64 MD	
5,711.18	5,685.54	-167.23	275.46	Start DLS 12.00 TFO 269.67	
6,459.20	6,163.00	-169.99	-200.01	Start 9618.74 hold at 6459.20 MD	
16,077.94	6,203.00	-225.73	-9,818.51	TD at 16077.94	