

PROJECT DETAILS: Weld County, CO NAD 83

Geodetic System: US State Plane 1983
Datum: North American Datum 1983
Ellipsoid: GRS 1980
Zone: Colorado Northern Zone
System Datum: Mean Sea Level
Local North: True

Project: Weld County, CO NAD 83
Site: Anschutz Equus Farms 3-62-4_5 NENE Pad
Well: Anschutz Equus Farms 03-62-04-2417B2
Wellbore: OH
Design: Plan #1



Azimuths to True North
Magnetic North: 8.22°

Magnetic Field
Strength: 52547.5nT
Dip Angle: 66.92°
Date: 2/11/2016
Model: BGGM2015

SECTION DETAILS

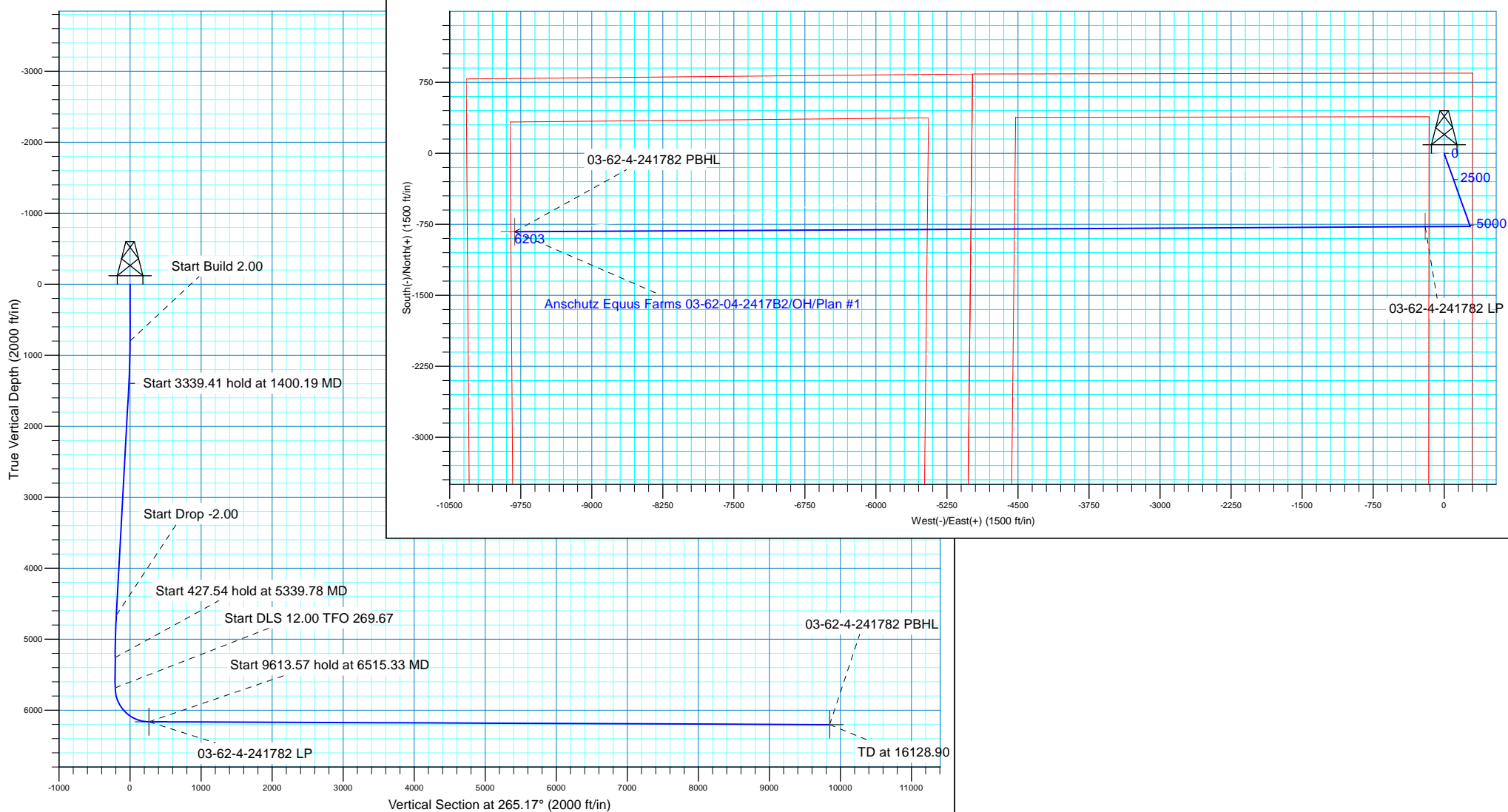
MD	Inc	Azi	TVD	+N/-S	+E/-W	Dleg	TFace	VSect
0.00	0.00	0.00	0.00	0.00	0.00	0.00	0.00	0.00
800.00	0.00	0.00	800.00	0.00	0.00	0.00	0.00	0.00
1400.19	12.00	160.42	1395.80	-59.02	20.99	2.00	160.42	-15.94
4739.60	12.00	160.42	4662.20	-713.39	253.69	0.00	0.00	-192.68
5339.78	0.00	0.00	5258.00	-772.41	274.68	2.00	180.00	-208.62
5767.32	0.00	0.00	5685.54	-772.41	274.68	0.00	0.00	-208.62
6515.33	89.76	269.67	6163.00	-775.12	-200.79	12.00	269.67	265.39
16128.90	89.76	269.67	6203.00	-829.88	-9814.12	0.00	0.00	9849.14

Plan: Plan #1 (Anschutz Equus Farms 03-62-04-2417B2/OH)

Created By: rscott Date: 19:46, February 15 2016

WELL DETAILS: Anschutz Equus Farms 03-62-04-2417B2

GL 4613 @ 4613.00ft (Original Well Elev) 4613.00
+N/-S +E/-W Northing Easting Latitude Longitude
0.00 0.00 1339656.09 3329200.01 40° 15' 35.080 N 104° 19' 13.450 W





Bill Barrett Corp.

Weld County, CO NAD 83

Anschutz Equus Farms 3-62-4_5 NENE Pad

Anschutz Equus Farms 03-62-04-2417B2

OH

Plan: Plan #1

Standard Planning Report

15 February, 2016



Database:	Casper District	Local Co-ordinate Reference:	Well Anschutz Equus Farms 03-62-04-2417B2
Company:	Bill Barrett Corp.	TVD Reference:	GL 4613 @ 4613.00ft (Original Well Elev)
Project:	Weld County, CO NAD 83	MD Reference:	GL 4613 @ 4613.00ft (Original Well Elev)
Site:	Anschutz Equus Farms 3-62-4_5 NENE Pad	North Reference:	True
Well:	Anschutz Equus Farms 03-62-04-2417B2	Survey Calculation Method:	Minimum Curvature
Wellbore:	OH		
Design:	Plan #1		

Project	Weld County, CO NAD 83		
Map System:	US State Plane 1983	System Datum:	Mean Sea Level
Geo Datum:	North American Datum 1983		
Map Zone:	Colorado Northern Zone		

Site	Anschutz Equus Farms 3-62-4_5 NENE Pad, SECTION 4, T3N, R62W, 6th P.M.			
Site Position:		Northing:	1,339,656.09 usft	Latitude: 40° 15' 35.080 N
From:	Lat/Long	Easting:	3,329,200.02 usft	Longitude: 104° 19' 13.450 W
Position Uncertainty:	0.00 ft	Slot Radius:	13.200 in	Grid Convergence: 0.76 °

Well	Anschutz Equus Farms 03-62-04-2417B2, 846 FNL 300 FEL			
Well Position	+N/-S	0.00 ft	Northing:	1,339,656.09 usft
	+E/-W	0.00 ft	Easting:	3,329,200.02 usft
Position Uncertainty		0.00 ft	Wellhead Elevation:	0.00 ft
			Ground Level:	4,613.00 ft

Wellbore	OH				
Magnetics	Model Name	Sample Date	Declination (°)	Dip Angle (°)	Field Strength (nT)
	BGGM2015	2/11/2016	8.22	66.92	52,548

Design	Plan #1			
Audit Notes:				
Version:	Phase:	PLAN	Tie On Depth:	0.00
Vertical Section:	Depth From (TVD) (ft)	+N/-S (ft)	+E/-W (ft)	Direction (°)
	0.00	0.00	0.00	265.17

Plan Sections										
Measured Depth (ft)	Inclination (°)	Azimuth (°)	Vertical Depth (ft)	+N/-S (ft)	+E/-W (ft)	Dogleg Rate (°/100ft)	Build Rate (°/100ft)	Turn Rate (°/100ft)	TFO (°)	Target
0.00	0.00	0.00	0.00	0.00	0.00	0.00	0.00	0.00	0.00	
800.00	0.00	0.00	800.00	0.00	0.00	0.00	0.00	0.00	0.00	
1,400.19	12.00	160.42	1,395.80	-59.02	20.99	2.00	2.00	0.00	160.42	
4,739.60	12.00	160.42	4,662.20	-713.39	253.69	0.00	0.00	0.00	0.00	
5,339.78	0.00	0.00	5,258.00	-772.41	274.68	2.00	-2.00	0.00	180.00	
5,767.32	0.00	0.00	5,685.54	-772.41	274.68	0.00	0.00	0.00	0.00	
6,515.33	89.76	269.67	6,163.00	-775.12	-200.79	12.00	12.00	-12.08	269.67	
16,128.90	89.76	269.67	6,203.00	-829.88	-9,814.12	0.00	0.00	0.00	0.00	03-62-4-241782 PBHI

Database:	Casper District	Local Co-ordinate Reference:	Well Anschutz Equus Farms 03-62-04-2417B2
Company:	Bill Barrett Corp.	TVD Reference:	GL 4613 @ 4613.00ft (Original Well Elev)
Project:	Weld County, CO NAD 83	MD Reference:	GL 4613 @ 4613.00ft (Original Well Elev)
Site:	Anschutz Equus Farms 3-62-4_5 NENE Pad	North Reference:	True
Well:	Anschutz Equus Farms 03-62-04-2417B2	Survey Calculation Method:	Minimum Curvature
Wellbore:	OH		
Design:	Plan #1		

Planned Survey									
Measured Depth (ft)	Inclination (°)	Azimuth (°)	Vertical Depth (ft)	+N/-S (ft)	+E/-W (ft)	Vertical Section (ft)	Dogleg Rate (°/100ft)	Build Rate (°/100ft)	Turn Rate (°/100ft)
0.00	0.00	0.00	0.00	0.00	0.00	0.00	0.00	0.00	0.00
100.00	0.00	0.00	100.00	0.00	0.00	0.00	0.00	0.00	0.00
200.00	0.00	0.00	200.00	0.00	0.00	0.00	0.00	0.00	0.00
300.00	0.00	0.00	300.00	0.00	0.00	0.00	0.00	0.00	0.00
400.00	0.00	0.00	400.00	0.00	0.00	0.00	0.00	0.00	0.00
500.00	0.00	0.00	500.00	0.00	0.00	0.00	0.00	0.00	0.00
600.00	0.00	0.00	600.00	0.00	0.00	0.00	0.00	0.00	0.00
700.00	0.00	0.00	700.00	0.00	0.00	0.00	0.00	0.00	0.00
800.00	0.00	0.00	800.00	0.00	0.00	0.00	0.00	0.00	0.00
Start Build 2.00									
900.00	2.00	160.42	899.98	-1.64	0.58	-0.44	2.00	2.00	0.00
1,000.00	4.00	160.42	999.84	-6.58	2.34	-1.78	2.00	2.00	0.00
1,100.00	6.00	160.42	1,099.45	-14.79	5.26	-3.99	2.00	2.00	0.00
1,200.00	8.00	160.42	1,198.70	-26.27	9.34	-7.09	2.00	2.00	0.00
1,300.00	10.00	160.42	1,297.47	-41.01	14.58	-11.08	2.00	2.00	0.00
1,400.00	12.00	160.42	1,395.62	-58.98	20.98	-15.93	2.00	2.00	0.00
1,400.19	12.00	160.42	1,395.80	-59.02	20.99	-15.94	2.00	2.00	0.00
Start 3339.41 hold at 1400.19 MD									
1,500.00	12.00	160.42	1,493.44	-78.58	27.94	-21.22	0.00	0.00	0.00
1,600.00	12.00	160.42	1,591.25	-98.17	34.91	-26.52	0.00	0.00	0.00
1,700.00	12.00	160.42	1,689.06	-117.77	41.88	-31.81	0.00	0.00	0.00
1,800.00	12.00	160.42	1,786.88	-137.37	48.85	-37.10	0.00	0.00	0.00
1,900.00	12.00	160.42	1,884.69	-156.96	55.82	-42.39	0.00	0.00	0.00
2,000.00	12.00	160.42	1,982.50	-176.56	62.79	-47.69	0.00	0.00	0.00
2,100.00	12.00	160.42	2,080.32	-196.15	69.75	-52.98	0.00	0.00	0.00
2,200.00	12.00	160.42	2,178.13	-215.75	76.72	-58.27	0.00	0.00	0.00
2,300.00	12.00	160.42	2,275.94	-235.34	83.69	-63.56	0.00	0.00	0.00
2,400.00	12.00	160.42	2,373.76	-254.94	90.66	-68.86	0.00	0.00	0.00
2,500.00	12.00	160.42	2,471.57	-274.53	97.63	-74.15	0.00	0.00	0.00
2,600.00	12.00	160.42	2,569.38	-294.13	104.60	-79.44	0.00	0.00	0.00
2,700.00	12.00	160.42	2,667.20	-313.72	111.56	-84.73	0.00	0.00	0.00
2,800.00	12.00	160.42	2,765.01	-333.32	118.53	-90.03	0.00	0.00	0.00
2,900.00	12.00	160.42	2,862.82	-352.91	125.50	-95.32	0.00	0.00	0.00
3,000.00	12.00	160.42	2,960.64	-372.51	132.47	-100.61	0.00	0.00	0.00
3,100.00	12.00	160.42	3,058.45	-392.11	139.44	-105.90	0.00	0.00	0.00
3,200.00	12.00	160.42	3,156.26	-411.70	146.41	-111.20	0.00	0.00	0.00
3,300.00	12.00	160.42	3,254.08	-431.30	153.37	-116.49	0.00	0.00	0.00
3,400.00	12.00	160.42	3,351.89	-450.89	160.34	-121.78	0.00	0.00	0.00
3,500.00	12.00	160.42	3,449.70	-470.49	167.31	-127.07	0.00	0.00	0.00
3,600.00	12.00	160.42	3,547.52	-490.08	174.28	-132.37	0.00	0.00	0.00
3,700.00	12.00	160.42	3,645.33	-509.68	181.25	-137.66	0.00	0.00	0.00
3,800.00	12.00	160.42	3,743.15	-529.27	188.22	-142.95	0.00	0.00	0.00
3,900.00	12.00	160.42	3,840.96	-548.87	195.19	-148.24	0.00	0.00	0.00
4,000.00	12.00	160.42	3,938.77	-568.46	202.15	-153.54	0.00	0.00	0.00
4,100.00	12.00	160.42	4,036.59	-588.06	209.12	-158.83	0.00	0.00	0.00
4,200.00	12.00	160.42	4,134.40	-607.65	216.09	-164.12	0.00	0.00	0.00
4,300.00	12.00	160.42	4,232.21	-627.25	223.06	-169.41	0.00	0.00	0.00
4,400.00	12.00	160.42	4,330.03	-646.84	230.03	-174.71	0.00	0.00	0.00
4,500.00	12.00	160.42	4,427.84	-666.44	237.00	-180.00	0.00	0.00	0.00
4,600.00	12.00	160.42	4,525.65	-686.04	243.96	-185.29	0.00	0.00	0.00
4,700.00	12.00	160.42	4,623.47	-705.63	250.93	-190.58	0.00	0.00	0.00
4,739.60	12.00	160.42	4,662.20	-713.39	253.69	-192.68	0.00	0.00	0.00
Start Drop -2.00									

Database:	Casper District	Local Co-ordinate Reference:	Well Anschutz Equus Farms 03-62-04-2417B2
Company:	Bill Barrett Corp.	TVD Reference:	GL 4613 @ 4613.00ft (Original Well Elev)
Project:	Weld County, CO NAD 83	MD Reference:	GL 4613 @ 4613.00ft (Original Well Elev)
Site:	Anschutz Equus Farms 3-62-4_5 NENE Pad	North Reference:	True
Well:	Anschutz Equus Farms 03-62-04-2417B2	Survey Calculation Method:	Minimum Curvature
Wellbore:	OH		
Design:	Plan #1		

Planned Survey									
Measured Depth (ft)	Inclination (°)	Azimuth (°)	Vertical Depth (ft)	+N/-S (ft)	+E/-W (ft)	Vertical Section (ft)	Dogleg Rate (°/100ft)	Build Rate (°/100ft)	Turn Rate (°/100ft)
4,800.00	10.80	160.42	4,721.41	-724.64	257.69	-195.72	2.00	-2.00	0.00
4,900.00	8.80	160.42	4,819.94	-740.67	263.39	-200.05	2.00	-2.00	0.00
5,000.00	6.80	160.42	4,919.02	-753.45	267.94	-203.50	2.00	-2.00	0.00
5,100.00	4.80	160.42	5,018.50	-762.96	271.32	-206.07	2.00	-2.00	0.00
5,200.00	2.80	160.42	5,118.27	-769.20	273.54	-207.75	2.00	-2.00	0.00
5,300.00	0.80	160.42	5,218.22	-772.15	274.59	-208.55	2.00	-2.00	0.00
5,339.78	0.00	0.00	5,258.00	-772.41	274.68	-208.62	2.00	-2.00	0.00
Start 427.54 hold at 5339.78 MD									
5,400.00	0.00	0.00	5,318.22	-772.41	274.68	-208.62	0.00	0.00	0.00
5,500.00	0.00	0.00	5,418.22	-772.41	274.68	-208.62	0.00	0.00	0.00
5,600.00	0.00	0.00	5,518.22	-772.41	274.68	-208.62	0.00	0.00	0.00
5,700.00	0.00	0.00	5,618.22	-772.41	274.68	-208.62	0.00	0.00	0.00
5,767.32	0.00	0.00	5,685.54	-772.41	274.68	-208.62	0.00	0.00	0.00
Start DLS 12.00 TFO 269.67									
5,800.00	3.92	269.67	5,718.19	-772.42	273.56	-207.51	12.00	12.00	0.00
5,900.00	15.92	269.67	5,816.52	-772.51	256.36	-190.36	12.00	12.00	0.00
6,000.00	27.92	269.67	5,909.12	-772.73	219.10	-153.21	12.00	12.00	0.00
6,100.00	39.92	269.67	5,991.95	-773.04	163.40	-97.68	12.00	12.00	0.00
6,200.00	51.92	269.67	6,061.38	-773.45	91.69	-26.19	12.00	12.00	0.00
6,300.00	63.92	269.67	6,114.40	-773.93	7.11	58.12	12.00	12.00	0.00
6,400.00	75.92	269.67	6,148.66	-774.47	-86.63	151.58	12.00	12.00	0.00
6,500.00	87.92	269.67	6,162.69	-775.03	-185.46	250.10	12.00	12.00	0.00
6,515.34	89.76	269.67	6,163.00	-775.12	-200.79	265.39	12.00	12.00	0.00
Start 9613.57 hold at 6515.33 MD - 03-62-4-241782 LP									
6,600.00	89.76	269.67	6,163.35	-775.60	-285.45	349.79	0.00	0.00	0.00
6,700.00	89.76	269.67	6,163.77	-776.17	-385.45	449.48	0.00	0.00	0.00
6,800.00	89.76	269.67	6,164.19	-776.74	-485.45	549.17	0.00	0.00	0.00
6,900.00	89.76	269.67	6,164.60	-777.31	-585.45	648.86	0.00	0.00	0.00
7,000.00	89.76	269.67	6,165.02	-777.88	-685.44	748.55	0.00	0.00	0.00
7,100.00	89.76	269.67	6,165.43	-778.45	-785.44	848.24	0.00	0.00	0.00
7,200.00	89.76	269.67	6,165.85	-779.02	-885.44	947.93	0.00	0.00	0.00
7,300.00	89.76	269.67	6,166.27	-779.59	-985.44	1,047.62	0.00	0.00	0.00
7,400.00	89.76	269.67	6,166.68	-780.16	-1,085.43	1,147.31	0.00	0.00	0.00
7,500.00	89.76	269.67	6,167.10	-780.73	-1,185.43	1,247.00	0.00	0.00	0.00
7,600.00	89.76	269.67	6,167.51	-781.30	-1,285.43	1,346.69	0.00	0.00	0.00
7,700.00	89.76	269.67	6,167.93	-781.87	-1,385.43	1,446.38	0.00	0.00	0.00
7,800.00	89.76	269.67	6,168.35	-782.44	-1,485.42	1,546.07	0.00	0.00	0.00
7,900.00	89.76	269.67	6,168.76	-783.01	-1,585.42	1,645.76	0.00	0.00	0.00
8,000.00	89.76	269.67	6,169.18	-783.58	-1,685.42	1,745.45	0.00	0.00	0.00
8,100.00	89.76	269.67	6,169.59	-784.15	-1,785.42	1,845.14	0.00	0.00	0.00
8,200.00	89.76	269.67	6,170.01	-784.72	-1,885.41	1,944.83	0.00	0.00	0.00
8,300.00	89.76	269.67	6,170.43	-785.29	-1,985.41	2,044.52	0.00	0.00	0.00
8,400.00	89.76	269.67	6,170.84	-785.86	-2,085.41	2,144.21	0.00	0.00	0.00
8,500.00	89.76	269.67	6,171.26	-786.42	-2,185.41	2,243.90	0.00	0.00	0.00
8,600.00	89.76	269.67	6,171.67	-786.99	-2,285.40	2,343.59	0.00	0.00	0.00
8,700.00	89.76	269.67	6,172.09	-787.56	-2,385.40	2,443.28	0.00	0.00	0.00
8,800.00	89.76	269.67	6,172.51	-788.13	-2,485.40	2,542.97	0.00	0.00	0.00
8,900.00	89.76	269.67	6,172.92	-788.70	-2,585.40	2,642.66	0.00	0.00	0.00
9,000.00	89.76	269.67	6,173.34	-789.27	-2,685.39	2,742.35	0.00	0.00	0.00
9,100.00	89.76	269.67	6,173.75	-789.84	-2,785.39	2,842.04	0.00	0.00	0.00
9,200.00	89.76	269.67	6,174.17	-790.41	-2,885.39	2,941.73	0.00	0.00	0.00
9,300.00	89.76	269.67	6,174.59	-790.98	-2,985.39	3,041.42	0.00	0.00	0.00

Database:	Casper District	Local Co-ordinate Reference:	Well Anschutz Equus Farms 03-62-04-2417B2
Company:	Bill Barrett Corp.	TVD Reference:	GL 4613 @ 4613.00ft (Original Well Elev)
Project:	Weld County, CO NAD 83	MD Reference:	GL 4613 @ 4613.00ft (Original Well Elev)
Site:	Anschutz Equus Farms 3-62-4_5 NENE Pad	North Reference:	True
Well:	Anschutz Equus Farms 03-62-04-2417B2	Survey Calculation Method:	Minimum Curvature
Wellbore:	OH		
Design:	Plan #1		

Planned Survey									
Measured Depth (ft)	Inclination (°)	Azimuth (°)	Vertical Depth (ft)	+N/-S (ft)	+E/-W (ft)	Vertical Section (ft)	Dogleg Rate (°/100ft)	Build Rate (°/100ft)	Turn Rate (°/100ft)
9,400.00	89.76	269.67	6,175.00	-791.55	-3,085.38	3,141.11	0.00	0.00	0.00
9,500.00	89.76	269.67	6,175.42	-792.12	-3,185.38	3,240.80	0.00	0.00	0.00
9,600.00	89.76	269.67	6,175.84	-792.69	-3,285.38	3,340.49	0.00	0.00	0.00
9,700.00	89.76	269.67	6,176.25	-793.26	-3,385.38	3,440.18	0.00	0.00	0.00
9,800.00	89.76	269.67	6,176.67	-793.83	-3,485.37	3,539.87	0.00	0.00	0.00
9,900.00	89.76	269.67	6,177.08	-794.40	-3,585.37	3,639.56	0.00	0.00	0.00
10,000.00	89.76	269.67	6,177.50	-794.97	-3,685.37	3,739.25	0.00	0.00	0.00
10,100.00	89.76	269.67	6,177.92	-795.54	-3,785.37	3,838.94	0.00	0.00	0.00
10,200.00	89.76	269.67	6,178.33	-796.11	-3,885.36	3,938.63	0.00	0.00	0.00
10,300.00	89.76	269.67	6,178.75	-796.68	-3,985.36	4,038.32	0.00	0.00	0.00
10,400.00	89.76	269.67	6,179.16	-797.25	-4,085.36	4,138.01	0.00	0.00	0.00
10,500.00	89.76	269.67	6,179.58	-797.82	-4,185.36	4,237.70	0.00	0.00	0.00
10,600.00	89.76	269.67	6,180.00	-798.39	-4,285.35	4,337.39	0.00	0.00	0.00
10,700.00	89.76	269.67	6,180.41	-798.96	-4,385.35	4,437.08	0.00	0.00	0.00
10,800.00	89.76	269.67	6,180.83	-799.53	-4,485.35	4,536.77	0.00	0.00	0.00
10,900.00	89.76	269.67	6,181.24	-800.10	-4,585.35	4,636.46	0.00	0.00	0.00
11,000.00	89.76	269.67	6,181.66	-800.67	-4,685.34	4,736.15	0.00	0.00	0.00
11,100.00	89.76	269.67	6,182.08	-801.24	-4,785.34	4,835.84	0.00	0.00	0.00
11,200.00	89.76	269.67	6,182.49	-801.81	-4,885.34	4,935.53	0.00	0.00	0.00
11,300.00	89.76	269.67	6,182.91	-802.38	-4,985.34	5,035.22	0.00	0.00	0.00
11,400.00	89.76	269.67	6,183.32	-802.95	-5,085.33	5,134.91	0.00	0.00	0.00
11,500.00	89.76	269.67	6,183.74	-803.51	-5,185.33	5,234.60	0.00	0.00	0.00
11,600.00	89.76	269.67	6,184.16	-804.08	-5,285.33	5,334.29	0.00	0.00	0.00
11,700.00	89.76	269.67	6,184.57	-804.65	-5,385.33	5,433.98	0.00	0.00	0.00
11,800.00	89.76	269.67	6,184.99	-805.22	-5,485.32	5,533.67	0.00	0.00	0.00
11,900.00	89.76	269.67	6,185.40	-805.79	-5,585.32	5,633.36	0.00	0.00	0.00
12,000.00	89.76	269.67	6,185.82	-806.36	-5,685.32	5,733.05	0.00	0.00	0.00
12,100.00	89.76	269.67	6,186.24	-806.93	-5,785.32	5,832.74	0.00	0.00	0.00
12,200.00	89.76	269.67	6,186.65	-807.50	-5,885.31	5,932.43	0.00	0.00	0.00
12,300.00	89.76	269.67	6,187.07	-808.07	-5,985.31	6,032.12	0.00	0.00	0.00
12,400.00	89.76	269.67	6,187.49	-808.64	-6,085.31	6,131.81	0.00	0.00	0.00
12,500.00	89.76	269.67	6,187.90	-809.21	-6,185.31	6,231.50	0.00	0.00	0.00
12,600.00	89.76	269.67	6,188.32	-809.78	-6,285.30	6,331.19	0.00	0.00	0.00
12,700.00	89.76	269.67	6,188.73	-810.35	-6,385.30	6,430.87	0.00	0.00	0.00
12,800.00	89.76	269.67	6,189.15	-810.92	-6,485.30	6,530.56	0.00	0.00	0.00
12,900.00	89.76	269.67	6,189.57	-811.49	-6,585.30	6,630.25	0.00	0.00	0.00
13,000.00	89.76	269.67	6,189.98	-812.06	-6,685.29	6,729.94	0.00	0.00	0.00
13,100.00	89.76	269.67	6,190.40	-812.63	-6,785.29	6,829.63	0.00	0.00	0.00
13,200.00	89.76	269.67	6,190.81	-813.20	-6,885.29	6,929.32	0.00	0.00	0.00
13,300.00	89.76	269.67	6,191.23	-813.77	-6,985.29	7,029.01	0.00	0.00	0.00
13,400.00	89.76	269.67	6,191.65	-814.34	-7,085.28	7,128.70	0.00	0.00	0.00
13,500.00	89.76	269.67	6,192.06	-814.91	-7,185.28	7,228.39	0.00	0.00	0.00
13,600.00	89.76	269.67	6,192.48	-815.48	-7,285.28	7,328.08	0.00	0.00	0.00
13,700.00	89.76	269.67	6,192.89	-816.05	-7,385.28	7,427.77	0.00	0.00	0.00
13,800.00	89.76	269.67	6,193.31	-816.62	-7,485.27	7,527.46	0.00	0.00	0.00
13,900.00	89.76	269.67	6,193.73	-817.19	-7,585.27	7,627.15	0.00	0.00	0.00
14,000.00	89.76	269.67	6,194.14	-817.76	-7,685.27	7,726.84	0.00	0.00	0.00
14,100.00	89.76	269.67	6,194.56	-818.33	-7,785.27	7,826.53	0.00	0.00	0.00
14,200.00	89.76	269.67	6,194.97	-818.90	-7,885.27	7,926.22	0.00	0.00	0.00
14,300.00	89.76	269.67	6,195.39	-819.47	-7,985.26	8,025.91	0.00	0.00	0.00
14,400.00	89.76	269.67	6,195.81	-820.04	-8,085.26	8,125.60	0.00	0.00	0.00
14,500.00	89.76	269.67	6,196.22	-820.60	-8,185.26	8,225.29	0.00	0.00	0.00
14,600.00	89.76	269.67	6,196.64	-821.17	-8,285.26	8,324.98	0.00	0.00	0.00

Database:	Casper District	Local Co-ordinate Reference:	Well Anschutz Equus Farms 03-62-04-2417B2
Company:	Bill Barrett Corp.	TVD Reference:	GL 4613 @ 4613.00ft (Original Well Elev)
Project:	Weld County, CO NAD 83	MD Reference:	GL 4613 @ 4613.00ft (Original Well Elev)
Site:	Anschutz Equus Farms 3-62-4_5 NENE Pad	North Reference:	True
Well:	Anschutz Equus Farms 03-62-04-2417B2	Survey Calculation Method:	Minimum Curvature
Wellbore:	OH		
Design:	Plan #1		

Planned Survey										
Measured Depth (ft)	Inclination (°)	Azimuth (°)	Vertical Depth (ft)	+N/-S (ft)	+E/-W (ft)	Vertical Section (ft)	Dogleg Rate (°/100ft)	Build Rate (°/100ft)	Turn Rate (°/100ft)	
14,700.00	89.76	269.67	6,197.05	-821.74	-8,385.25	8,424.67	0.00	0.00	0.00	
14,800.00	89.76	269.67	6,197.47	-822.31	-8,485.25	8,524.36	0.00	0.00	0.00	
14,900.00	89.76	269.67	6,197.89	-822.88	-8,585.25	8,624.05	0.00	0.00	0.00	
15,000.00	89.76	269.67	6,198.30	-823.45	-8,685.25	8,723.74	0.00	0.00	0.00	
15,100.00	89.76	269.67	6,198.72	-824.02	-8,785.24	8,823.43	0.00	0.00	0.00	
15,200.00	89.76	269.67	6,199.14	-824.59	-8,885.24	8,923.12	0.00	0.00	0.00	
15,300.00	89.76	269.67	6,199.55	-825.16	-8,985.24	9,022.81	0.00	0.00	0.00	
15,400.00	89.76	269.67	6,199.97	-825.73	-9,085.24	9,122.50	0.00	0.00	0.00	
15,500.00	89.76	269.67	6,200.38	-826.30	-9,185.23	9,222.19	0.00	0.00	0.00	
15,600.00	89.76	269.67	6,200.80	-826.87	-9,285.23	9,321.88	0.00	0.00	0.00	
15,700.00	89.76	269.67	6,201.22	-827.44	-9,385.23	9,421.57	0.00	0.00	0.00	
15,800.00	89.76	269.67	6,201.63	-828.01	-9,485.23	9,521.26	0.00	0.00	0.00	
15,900.00	89.76	269.67	6,202.05	-828.58	-9,585.22	9,620.95	0.00	0.00	0.00	
16,000.00	89.76	269.67	6,202.46	-829.15	-9,685.22	9,720.64	0.00	0.00	0.00	
16,100.00	89.76	269.67	6,202.88	-829.72	-9,785.22	9,820.33	0.00	0.00	0.00	
16,128.90	89.76	269.67	6,203.00	-829.88	-9,814.12	9,849.14	0.00	0.00	0.00	
TD at 16128.90 - 03-62-4-241782 PBHL										

Design Targets										
Target Name - hit/miss target - Shape	Dip Angle (°)	Dip Dir. (°)	TVD (ft)	+N/-S (ft)	+E/-W (ft)	Northing (usft)	Easting (usft)	Latitude	Longitude	
03-62-4-241782 LP - plan hits target center - Point	0.00	0.00	6,163.00	-775.12	-200.79	1,338,878.36	3,329,009.55	40° 15' 27.420 N	104° 19' 16.040 W	
03-62-4-241782 PBHL - plan hits target center - Point	0.00	0.00	6,203.00	-829.88	-9,814.12	1,338,695.73	3,319,397.82	40° 15' 26.860 N	104° 21' 20.040 W	

Plan Annotations					
Measured Depth (ft)	Vertical Depth (ft)	Local Coordinates			
		+N/-S (ft)	+E/-W (ft)	Comment	
800.00	800.00	0.00	0.00	Start Build 2.00	
1,400.19	1,395.80	-59.02	20.99	Start 3339.41 hold at 1400.19 MD	
4,739.60	4,662.20	-713.39	253.69	Start Drop -2.00	
5,339.78	5,258.00	-772.41	274.68	Start 427.54 hold at 5339.78 MD	
5,767.32	5,685.54	-772.41	274.68	Start DLS 12.00 TFO 269.67	
6,515.33	6,163.00	-775.12	-200.79	Start 9613.57 hold at 6515.33 MD	
16,128.90	6,203.00	-829.88	-9,814.12	TD at 16128.90	