

7

1917 Brass Cap
LATITUDE: 40°45'57.58"
LONGITUDE: -103°48'09.15"
Lot 3

1917 Brass Cap
LATITUDE: 40°46'23.86"
LONGITUDE: -103°47'00.78"

**WELL LOCATION:
COTTONWOOD FED 07M-1933**

ELEV. UNGRADED GROUND = 4624.1'

Lot 4
Top of
Hole
757'

1917 Brass Cap
LATITUDE: 40°45'31.85"
LONGITUDE: -103°47'36.51"

1917 Brass Cap
LATITUDE: 40°45'31.72"
LONGITUDE: -103°47'02.39"

N89°11'25"E
2583.33' (Meas.)

N89°09'45"E - 2626.94' (Meas.)

IMPROVEMENT NOTE:
See addendum to legal plat
(Sheet 2) for visible
improvements within 500'
of the proposed location.

T9N, R57W, 6th P.M.

Lot 2

1" Broken Pipe
Filled with Concrete
LATITUDE: 40°45'05.74"
LONGITUDE: 103°47'01.69"

18

NAD 83 (SURFACE LOCATION)	
LATITUDE	= 40°45'35.46" (40.759850°)
LONGITUDE	= 103°48'00.11" (103.800031°)
NAD 27 (SURFACE LOCATION)	
LATITUDE	= 40°45'35.51" (40.759864°)
LONGITUDE	= 103°47'58.30" (103.799528°)

Lot 3

Lot 4

See Sheet 1ii

1917 Brass Cap
LATITUDE: 40°44'39.54"
LONGITUDE: 103°47'35.24"

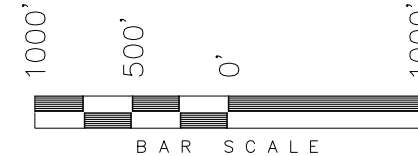
1917 Brass Cap
LATITUDE: 40°44'39.65"
LONGITUDE: 103°47'01.03"

N88°39'54"E - 2604.79' (Meas.)

N88°39'17"E - 2633.77' (Meas.)

WHITING OIL & GAS CORP.

WELL LOCATION, COTTONWOOD FED 07M-1933
LOCATED AS SHOWN IN THE SW 1/4
SW 1/4 (LOT 4) OF SECTION 7, T9N,
R57W, 6th P.M. WELD COUNTY, COLORADO.



NOTES:

- Well footages are measured at right angles to the Section Lines.
- G.P.S. Operator: C. Stewart, (PDOP) = 1.3



= SECTION CORNERS LOCATED

BASIS OF ELEV; Elevations are
based on an N.G.S. OPUS Correction.
LOCATION: LAT. 40°46'03.41" LONG. 103°46'26.97"
(Tristate Aluminum Cap) NAVD 88 Elev. 4750.22'

THIS IS TO CERTIFY THAT THE ABOVE PLAT WAS
PREPARED FROM FIELD NOTES OF REAL SURVEYS
MADE BY ME OR UNDER MY SUPERVISION. THE
LOCATION HAS BEEN STAKED ON THE GROUND AS
SHOWN ON THE PLAT, AND THAT THE SAME ARE
TRUE AND CORRECT TO THE BEST OF MY
KNOWLEDGE AND BELIEF. 07-13-15

Stacy J. Stewart
REGISTERED LAND SURVEYOR
REGISTRATION NO. 30125
STATE OF COLORADO

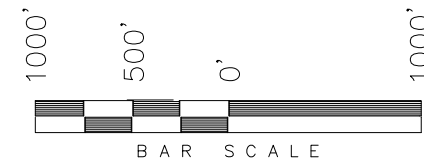
TRI STATE LAND SURVEYING & CONSULTING

180 NORTH VERNAL AVE. - VERNAL, UTAH 84078
(435) 781-2501

DATE SURVEYED: 06-23-15	SURVEYED BY: C.S.	SHEET 1i
DATE DRAWN: 06-24-15	DRAWN BY: F.T.M.	
REVISED: 07-13-15 F.T.M.	SCALE: 1" = 1000'	

WHITING OIL & GAS CORP.

TARGET BOTTOM HOLE, COTTONWOOD FED
07M-1933, LOCATED AS SHOWN IN THE
SW 1/4 SW 1/4 (LOT 4) OF SECTION 19,
T9N, R57W, 6th P.M. WELD COUNTY,
COLORADO.



NOTES:

1. Bearings are based on Global Positioning Satellite observations.
2. Bottom of hole footages are 0' FWL & 100' FSL.

 = SECTION CORNERS LOCATED

THIS IS TO CERTIFY THAT THE ABOVE PLAT WAS
PREPARED FROM FIELD NOTES
MADE BY ME OR UNDER MY SUPERVISION, THE
LOCATION HAS BEEN STATED ON THE ORIGINAL AS
SHOWN ON THE PLAT. I DO AT THE SAME TIME
TRUE AND CORRECT TO THE BEST OF MY
KNOWLEDGE AND BELIEF. STA 07-13-15

REGISTERED LAND SURVEYOR
REGISTRATION NO. 30125
STATE OF COLORADO

TRI STATE LAND SURVEYING & CONSULTING

180 NORTH VERNAL AVE. – VERNAL, UTAH 84078
(435) 781-2501

DATE SURVEYED:
06-23-15

SURVEYED BY: C.S.

SHEET

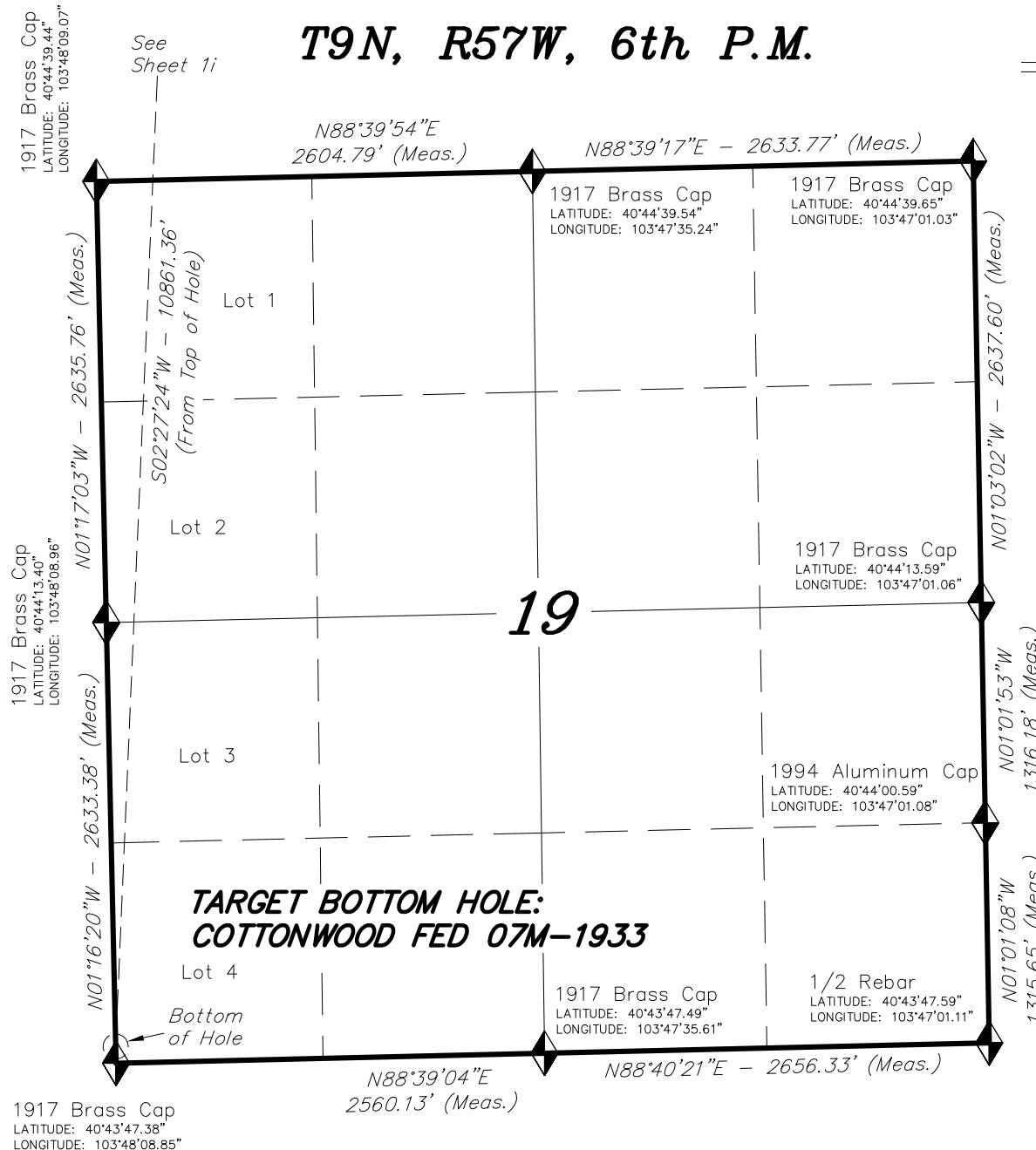
DATE DRAWN:
06-24-15

DRAWN BY: F.T.M.

REVISED:
07-13-15 F.T.M.

SCALE: 1" = 1000'

1 ii



BASIS OF ELEV; Elevations are based on an
N.G.S. OPUS Correction. LOCATION:
LAT. 40°46'03.41" LONG. 103°46'26.97"
(Tristate Aluminum Cap) NAVD 88 Elev. 4750.22'

NAD 83 (BOTTOM HOLE LOCATION)	
LATITUDE =	40°43'48.37" (40.730103°)
LONGITUDE =	103°48'08.86" (103.802460°)
NAD 27 (BOTTOM HOLE LOCATION)	
LATITUDE =	40°43'48.42" (40.730116°)
LONGITUDE =	103°48'07.04" (103.801957°)