

BONANZA CREEK ENERGY OPERATING CO
PO BOX 21974
BAKERSFIELD, California

State North Platte K-036HC

Ensign 128

Post Job Summary

Cement Intermediate Casing

Date Prepared: 8/31/13
Version: 1

Service Supervisor: SMITH, AARON

Submitted by: LANSDALE, JUSTIN

HALLIBURTON

HALLIBURTON

Wellbore Geometry

Job Tubulars					MD		TVD		Shoe Joint Length ft
Type	Description	Size in	ID in	Wt lbm/ft	Top ft	Bottom ft	Top ft	Bottom ft	
Casing	9 5/8" Surface Casing	9.63	8.921	36.00	0.00	436.00			
Open Hole Section	8 3/4" Open Hole Section		8.750		436.00	7,307.00	436.00	6,462.00	
Casing	7" Intermediate Casing	7.00	6.276	26.00	0.00	7,297.00	0.00	6,462.00	42.00

HALLIBURTON

Pumping Schedule

Stage /Plug #	Fluid #	Fluid Type	Fluid Name	Surface Density lbm/gal	Avg Rate bbl/min	Surface Volume	Downhole Volume
1	1	Spacer	MUD FLUSH III	8.40	4.00	24.0 bbl	24.0 bbl
1	2	Cement Slurry	12.5# EconoCem B2	12.50	5.00	555.0 sacks	186.0 bb;
1	3	Cement Slurry	14.6# ExpandaCem B1	14.60	5.00	330.0 sacks	85.0 bbl

Fluids Pumped

Stage/Plug # 1 Fluid 1: MUD FLUSH III
MUD FLUSH III - SBM (528788)
42 gal/bbl Mud Flush III

Fluid Density: 8.40 lbm/gal
Fluid Volume: 24.00 bbl

Stage/Plug # 1 Fluid 2: 12.5# EconoCem B2
ECONOCEM (TM) SYSTEM

Fluid Weight: 12.50 lbm/gal
Slurry Yield: 1.89 ft3/sack
Total Mixing Fluid: 10.28 Gal
Surface Volume: 555.0 sacks
Sacks: 555.0 sacks

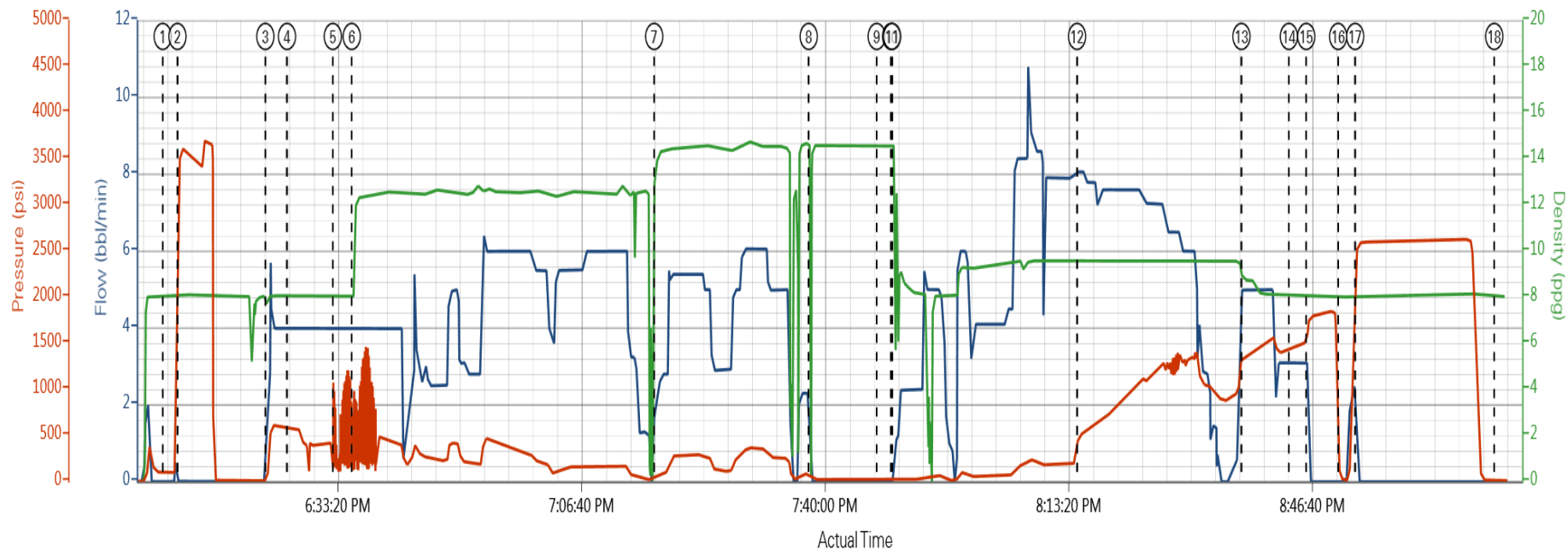
Stage/Plug # 1 Fluid 3: 14.6# ExpandaCem B1
EXPANDACEM (TM) SYSTEM

Fluid Weight: 14.60 lbm/gal
Slurry Yield: 1.46 ft3/sack
Total Mixing Fluid: 6.07 Gal
Surface Volume: 330.0 sacks
Sacks: 330.0 sacks

HALLIBURTON

Data Acquisition

Bonanza Creek State North Platte K-036HC Intermediate



Comb Pump Rate (bbl/min) DH Density (ppg) PS Pump Press (psi)

1 Start Job	3 Pump Spacer 1	5 Pump Spacer 1	7 Pump Tail Cement	9 Drop Top Plug	11 Pump Displacement	13 Spacer Returns to Surface	15 Bump Plug	17 Other
2 Test Lines	4 Pump Spacer 2	6 Pump Lead Cement	8 Shutdown	10 Clean Lines	12 Displ Reached Cmnt	14 Cement Returns to Surface	16 Check Floats	18 End Job

▼ Halliburton | iCem Service®

Created: 2013-08-19 11:01:05 , Version: 1.4.96

Edit

Customer: BONANZA CREEK ENERGY
Representative: Aaron Smith

Job Date: 8/19/2013 3:59:15 PM
Sales Order #: 900676433

Well: State North Platte K-036HC
Thanks: Aaron Smith and Crew

HALLIBURTON

Service Supervisor Reports

Job Log

Date/Time	Chart #	Activity Code	Pump Rate	Cum Vol	Pump		Pressure (psig)	Comments
08/19/2013 10:00		Arrive at Location from Service Center						With all Equipment and Materials. Rig still running casing. Waiting on rig to finish running casing to spot equipment and rig up. Rig up area is in the redzone of the rig while running casing.
08/19/2013 10:30		Assessment Of Location Safety Meeting						Hazard Hunt with crew.
08/19/2013 15:00		Casing on Bottom						
08/19/2013 15:05		Circulate Well						
08/19/2013 15:10		Pre-Rig Up Safety Meeting						Covered rig-up JSA with crew.
08/19/2013 15:20		Rig-Up Equipment						
08/19/2013 15:45		Rig-Up Completed						Rigged up iron and equipment, waiting on rig to circulate and land the casing.
08/19/2013 16:45		Pre-Job Safety Meeting						With Customer and Rig Crew
08/19/2013 17:05		Comment						End Pre-Job Safety Meeting
08/19/2013 18:09		Start Job						
08/19/2013 18:11		Test Lines						3000
08/19/2013 18:23		Pump Spacer 1	6	10			150.0	Fresh Water
08/19/2013 18:26		Pump Spacer 2	6	24			564.0	Mud Flush
08/19/2013 18:32		Pump Spacer 1	6	10			103.0	Fresh Water
08/19/2013 18:35		Pump Lead Cement	6	186			103.0	555 sks @ 12.5ppg, 1.89 yield, 10.29 gal/sk
08/19/2013 19:16		Pump Tail Cement	6	85			125.0	330 sks @ 14.6ppg, 1.46 yield, 6.08 gal/sk
08/19/2013 19:37		Shutdown						
08/19/2013 19:47		Drop Top Plug						Pre-loaded, verified by customer.2
08/19/2013 19:49		Clean Lines	3	20			120.0	Wash up on top of plug, first 20 of displacement, Fresh Water
08/19/2013 19:49		Pump Displacement	8	240			1500.0	Mud
08/19/2013 20:37		Spacer Returns to Surface						@ 226 bbls displacement, 44 bbls to the pit
08/19/2013 20:42		Pump Displacement	3	17			1500.0	Fresh Water
08/19/2013 20:43		Cement Returns to Surface						@ 270 bbls displacement, 7 bbls to the pit
08/19/2013 20:45		Bump Plug						Final Circulating pressure 1508
08/19/2013 20:50		Check Floats						Floats Good, 1.5 bbls back
08/19/2013 21:08		Other					2629.0	Casing Test 2500 PSI for 15 min,
08/19/2013 21:11		End Job						Thanks Aaron Smith and Crew

The Road to Excellence Starts with Safety

The Road to Excellence Starts With Safety			
Sold To #: 324725	Ship To #: 3093308	Quote #:	Sales Order #: 900676433
Customer: BONANZA CREEK ENERGY OPERATING CO		Customer Rep: Joel, Tim	
Well Name: State North Platte	Well #: K-036HC	API/UWI #: 05-123-37669	
Field: Wattenberg	City (SAP): KERSEY	County/Parish: Weld	State: Colorado
Lat: N 40.362 deg. OR N 40 deg. 21 min. 43.992 secs.		Long: E 104.392 deg. OR E 104 deg. 23 min. 31.452 secs.	
Contractor: Ensign	Rig/Platform Name/Num: Ensign 128		
Job Purpose: Cement Intermediate Casing			
Well Type: Development Well	Job Type: Cement Intermediate Casing		
Sales Person: FLING, MATTHEW	Srvc Supervisor: SMITH, AARON	MBU ID Emp #: 518187	

Job Personnel

HES Emp Name	Exp Hrs	Emp #	HES Emp Name	Exp Hrs	Emp #	HES Emp Name	Exp Hrs	Emp #
ALVARADO, JOSE Angel	12.0	505918	BOURGEOIS, KEVIN Paul	12.0	459092	DODSON, RICHARD Bryan	12.0	518192
JOHNSON, BRANDON Matthew	12.0	545534	SMITH, AARON David	12.0	518187			

Equipment

HES Unit #	Distance-1 way	HES Unit #	Distance-1 way	HES Unit #	Distance-1 way	HES Unit #	Distance-1 way
10246780C	46 mile	10286865	46 mile	10988836C	46 mile	11019824C	46 mile
11398490	46 mile	11566182	46 mile	12010173	46 mile		

Job

Job Times

Formation Name				Date	Time	Time Zone
Formation Depth (MD)	Top	Bottom		Called Out	19 - Aug - 2013	05:00 MST
Form Type	BHST			On Location	19 - Aug - 2013	10:00 MST
Job depth MD	7307. ft			Job Started	19 - Aug - 2013	18:09 MST
Water Depth	Wk Ht Above Floor 6. ft			Job Completed	19 - Aug - 2013	21:11 MST
Perforation Depth (MD)	From	To		Departed Loc	19 - Aug - 2013	22:00 MST

Well Data

Description	New / Used	Max pressure psig	Size in	ID in	Weight lbm/ft	Thread	Grade	Top MD ft	Bottom MD ft	Top TVD ft	Bottom TVD ft
8 3/4" Open Hole Section				8.75				436.	7307.	436.	6462.
7" Intermediate Casing	Unknown		7.	6.276	26.		P-110	.	7297.	.	6462.
9 5/8" Surface Casing	Unknown		9.625	8.921	36.		J-55	.	436.		

Sales/Rental/3rd Party (HES)

Description	Qty	Qty uom	Depth	Supplier
CMT CASING EQUIPMENT BOM	1	JOB		
Description	Qty	Qty uom	Depth	Supplier
ZI FUEL SURCHG-CARS/PICKUPS<1 1/2TON	70	MI		
MILEAGE FOR CEMENTING CREW,ZI	70	MI		
SHOE,FLT,7 8RD,P-110/Q-125,2-3/4	1	EA		
CLR,FLT,7 LG 8RD 23-26PPF,2-3/4	1	EA		
PLUG,CMTG,TOP,7,HWE,5.66 MIN/6.54 MAX CS	1	EA		

KIT,HALL WELD-A					2	EA			
Fluid Data									
Stage/Plug #: 1									
Fluid #	Stage Type	Fluid Name	Qty	Qty uom	Mixing Density lbm/gal	Yield ft ³ /sk	Mix Fluid Gal/sk	Rate bbl/min	Total Mix Fluid Gal/sk
1	MUD FLUSH III	MUD FLUSH III - SBM (528788)	24.00	bbl	8.4			4.0	
42 gal/bbl		FRESH WATER							
42 gal/bbl		MUD FLUSH III - SBM (528788)							
2	12.5# EconoCem B2	ECONOCEM (TM) SYSTEM (452992)	555.0	sacks	12.5	1.89	10.28	5.0	10.28
10.28 Gal		FRESH WATER							
3	14.6# ExpandaCem B1	EXPANDACEM (TM) SYSTEM (452979)	330.0	sacks	14.6	1.46	6.07	5.0	6.07
6.07 Gal		FRESH WATER							
Rates									
Circulating		Mixing		Displacement		Avg. Job			
Cement Left In Pipe		Amount	42 ft	Reason	Shoe Joint				
Frac Ring # 1 @	ID	Frac ring # 2 @	ID	Frac Ring # 3 @	ID	Frac Ring # 4 @	ID		
The Information Stated Herein Is Correct				Customer Representative Signature					

