

SEC. 35, T. 7 S., R. 95 W. OF THE 6TH P.M.

PLAT 1

BM 41A-35-795  
LOCATION

(SAVAGE:  
PROPERTY)  
(FEDERAL:  
LEASE)

BATTLEMENT MESA

41A-35-795

GND.ELEV = 9237.0

PAD ELEV. = 9236.0

SHL NAD83

LAT: 39.399021°

LONG: 107.966469°

SHL NAD 27

LAT: 39.399042°

LONG: 107.965843°

UTM 12N

N 14321640.7

E 2497638.0

CAERUS  
PICEANCE  
LLC

BOTTOM HOLE LOCATION

313' FNL, 637' FEL

NAD 83

LAT: 39.400027°

LONG: 107.957763°

NAD 27

LAT: 39.400049°

LONG: 107.957137°

UTM12N

N 14322090.1

E 2500085.7

CAERUS  
PICEANCE  
LLC

STEAMERS  
RANCH  
LLC

CAERUS PICEANCE LLC PROP. LINE  
NOBLE ENERGY INC PROPERTY LINE  
(FEDERAL LEASE LINE)

NOBLE  
ENERGY  
INC

CHEVRON USA  
INC

FOUND 1912 GLO  
BRASS CAP

N88°22'06"E

WHITE RIVER USFS

2

WHITE RIVER USFS

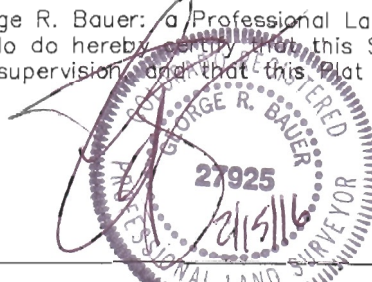
THIS WELL LOCATION PLAT WAS PREPARED FOR CAERUS PICEANCE LLC TO LOCATE THE  
BATTLEMENT MESA 41A-35-795 WELL, 679 FEET FROM THE NORTH LINE OF SECTION 35  
AND 2146 FEET FROM THE WEST LINE OF SECTION 35, SITUATED IN THE NENW OF SECTION  
35, T. 7 S., R. 95 W. OF THE 6TH P.M. GARFIELD COUNTY, COLORADO.

## SURVEYOR'S CERTIFICATE

### REFERENCE NOTES

- 1) T. 7 S., R. 95 W., 6TH P.M. GLO PLAT.
- 2) U.S.G.S. QUAD: PARACHUTE, CO
- 3) ELEVATIONS BASED ON N.A.V.D. 1988 LIDAR  
BASED CONTROL PT CP MON 8
- 4) LATITUDES AND LONGITUDES ARE BASED ON  
NAD 83, COLORADO CENTRAL ZONE.
- 5) GPS OPERATOR ROBERT WOOD, OBSERVED  
A PDOP OF 1.9.
- 6) ALL GPS OBSERVATIONS ARE IN COMPLIANCE  
WITH COGCC RULE NO. 215.
- 7) SURFACE AND BOTTOM HOLE LOCATIONS  
ARE MEASURED 90° FROM SECTION LINES.

I, George R. Bauer, a Professional Land Surveyor in the State of  
Colorado do hereby certify that this Survey was made under my  
direct supervision and that this plat represents said Survey.



### -LEGEND-



FIELD SURVEYED SECTION  
CORNER LOCATIONS



FIELD SURVEYED WELL  
SHL LOCATION



CALCULATED BOTTOM  
HOLE LOCATION

BM 35C-795  
PAD LOCATION



GRAPHIC SCALE IN FEET  
1 INCH = 1000 FEET

Caerus Piceance LLC



### WELL LOCATION PLAT



CONSTRUCTION SURVEYS, INC.  
0012 SUNRISE BLVD. SILT, CO  
81652 (970) 876-5753

SURVEY BY: REW 12/10/15

PDOP: 1.9

DRAWN BY: REW 02/10/16

DWG: CAERUS\BM35C-795PLAT\_1

REVISED: