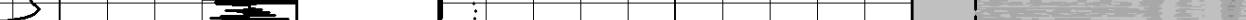


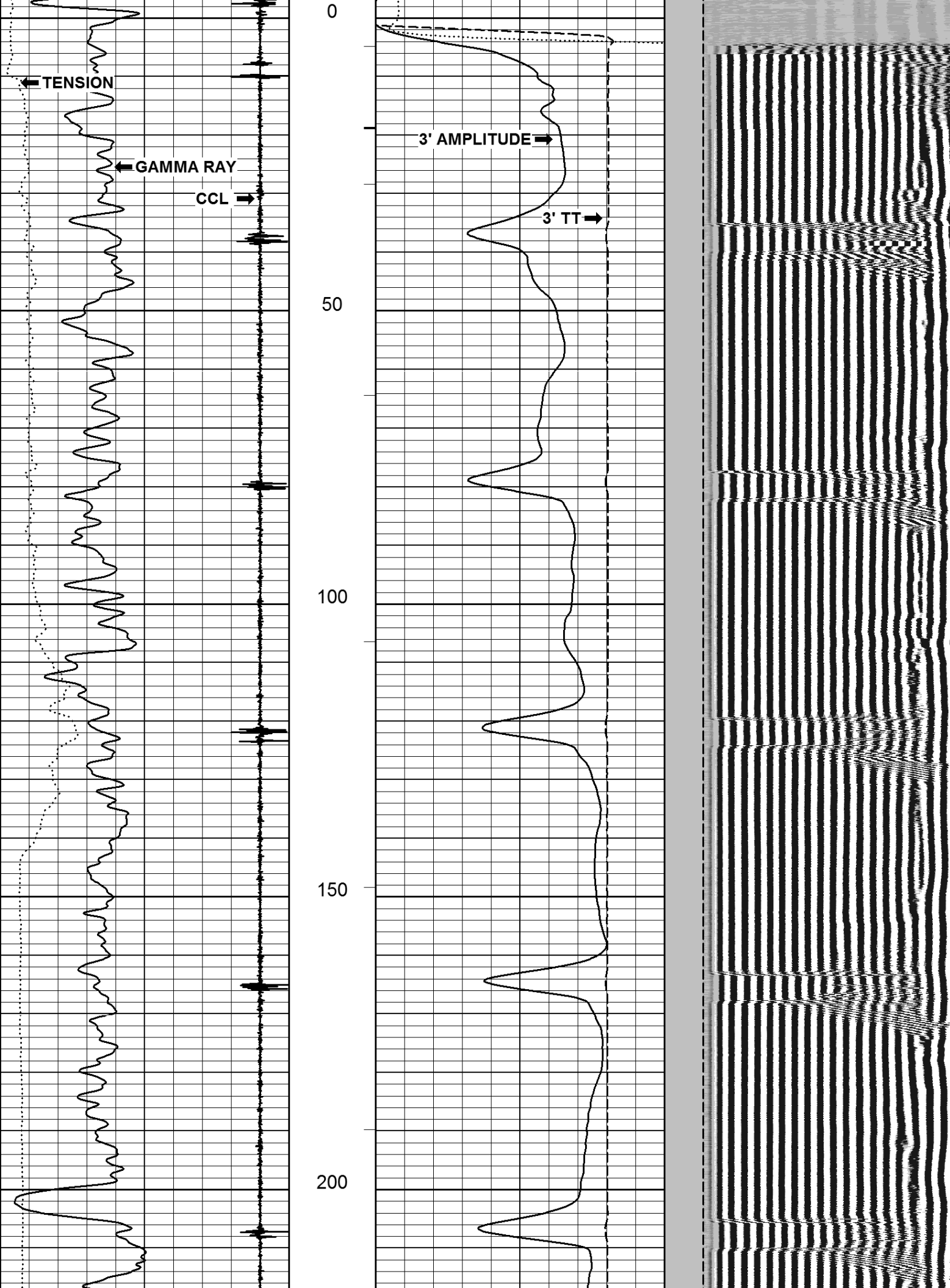


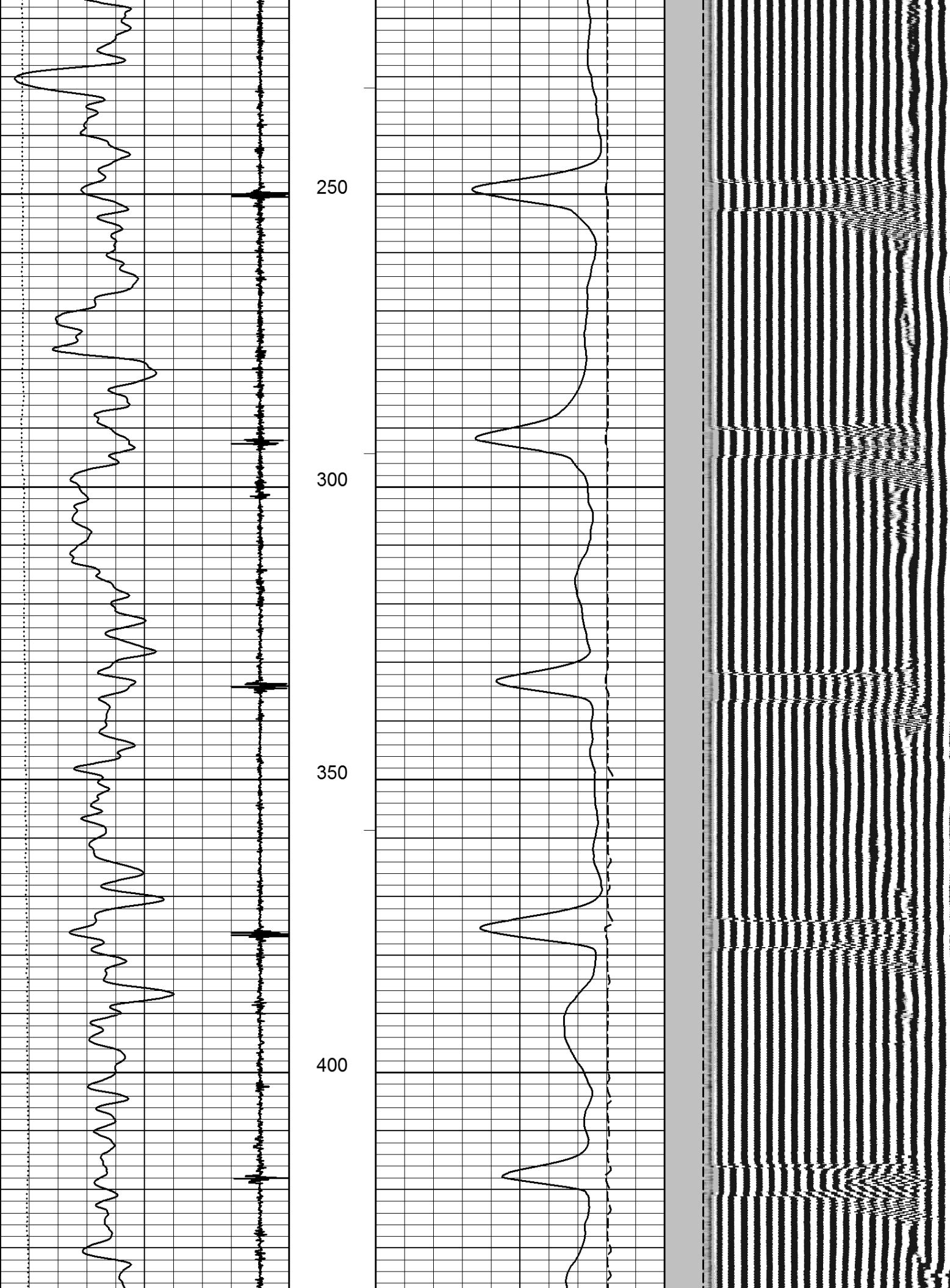
CCM

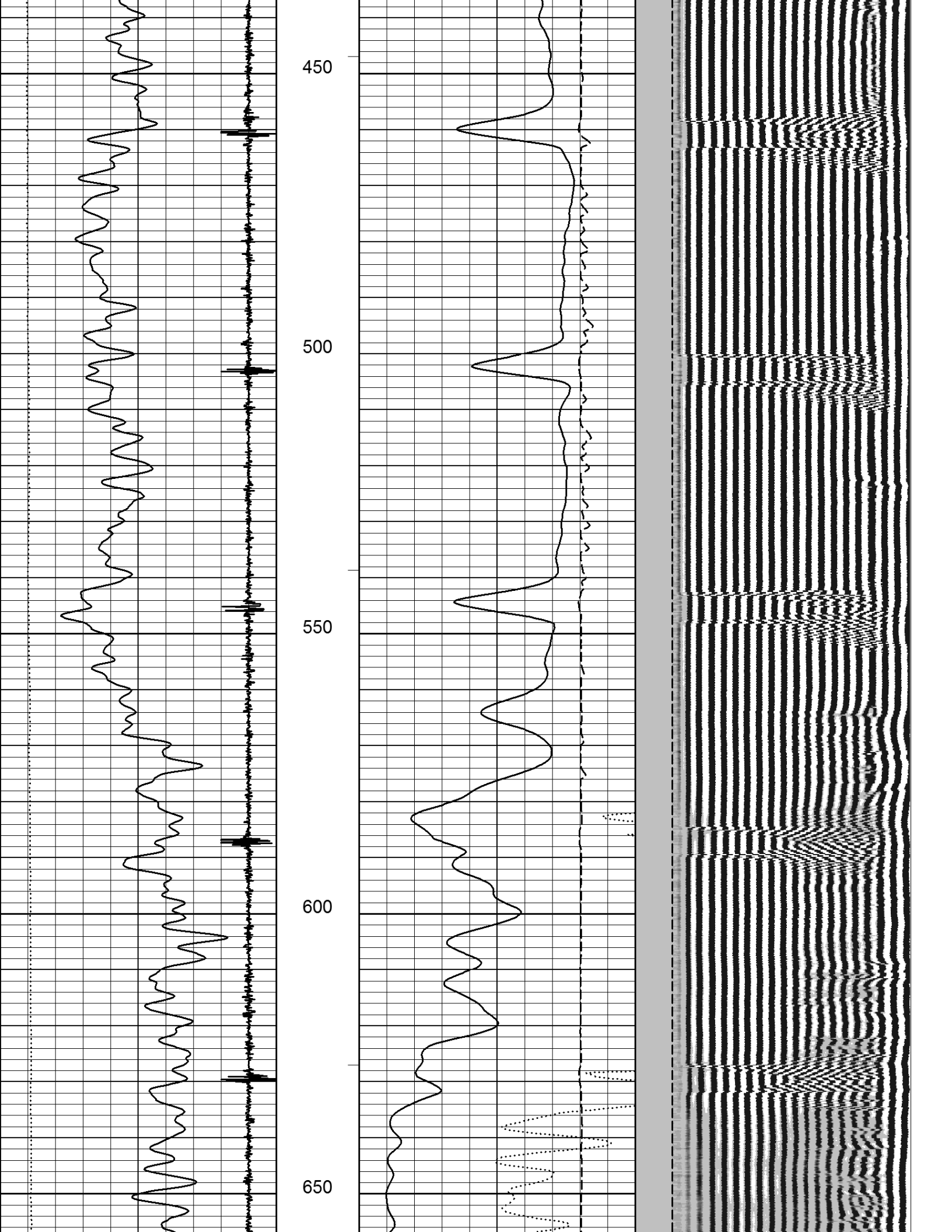
ENERGY SERVICES

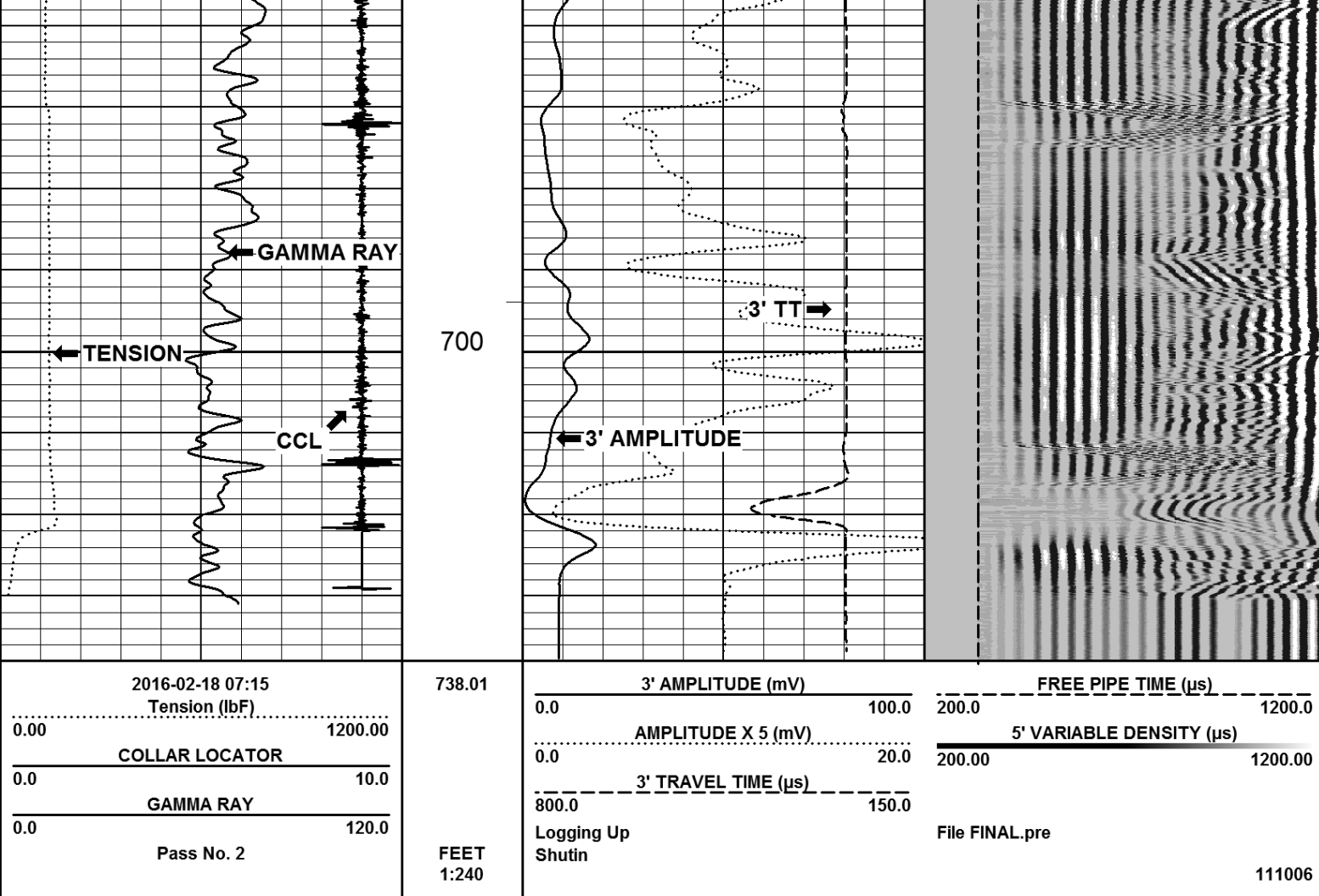
All interpretations are opinions based on inferences from electrical or other measurements and we cannot, and do not guarantee the accuracy or correctness of any interpretations, and we shall not, except in the case of gross or willful negligence on our part, be liable or responsible for any loss, costs, damages or expenses incurred or sustained by anyone resulting from any interpretation made by any of our officers, agents, or employees. These interpretations are also subject to our general terms and conditions as set out in our current price schedule.











Company PDC ENERGY INC

Well RICHTER43-27

Field WATTENBERG

County WELD

State COLORADO

1/4'S NESE

SEC. 27

TWP. 7N

RGE. 64W