

SEC. 35, T. 7 S., R. 95 W. OF THE 6TH P.M.

PLAT 1

BM 32C-35-795
LOCATION

(SAVAGE:
PROPERTY)
(FEDERAL:
LEASE)



BATTEMENT MESA
32C-35-795

GND.ELEV = 9237.8

PAD.ELEV. = 9236.0

SHL NAD83
LAT: 39.398947°
LONG: 107.966518°
SHL NAD 27
LAT: 39.398969°
LONG: 107.965892°
UTM 12N
N 14321613.6
E 2497625.1

35

BOTTOM HOLE LOCATION

2179' FNL, 1987' FEL

NAD 83

LAT: 39.394907°

LONG: 107.962544°

NAD 27

LAT: 39.394929°

LONG: 107.961917°

UTM12N

N 14320180.0

E 2498797.7

CAERUS PICEANCE LLC PROP. LINE
NOBLE ENERGY INC PROPERTY LINE
(FEDERAL LEASE LINE)

NOBLE
ENERGY
INC

STEAMERS
RANCH
LLC

CHEVRON USA INC SECTION 3 SECTION 2 2623.72' WHITE RIVER USFS

2

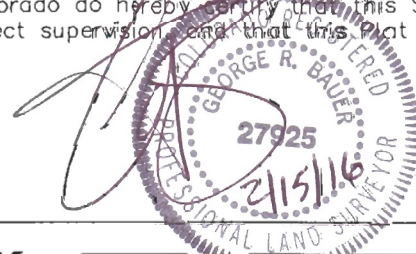
WHITE RIVER USFS

THIS WELL LOCATION PLAT WAS PREPARED FOR CAERUS PICEANCE LLC TO LOCATE THE
BATTEMENT MESA 32C-35-795 WELL, 706 FEET FROM THE NORTH LINE OF SECTION 35
AND 2132 FEET FROM THE WEST LINE OF SECTION 35, SITUATED IN THE NENW OF SECTION
35, T. 7 S., R. 95 W. OF THE 6TH P.M. GARFIELD COUNTY, COLORADO.

REFERENCE NOTES

- 1) T. 7 S., R. 95 W., 6TH P.M. GLO PLAT.
- 2) U.S.G.S. QUAD: PARACHUTE, CO
- 3) ELEVATIONS BASED ON N.A.V.D. 1988 LIDAR BASED CONTROL PT CP MON 8
- 4) LATITUDES AND LONGITUDES ARE BASED ON NAD 83, COLORADO CENTRAL ZONE.
- 5) GPS OPERATOR ROBERT WOOD, OBSERVED A PDOP OF 1.9.
- 6) ALL GPS OBSERVATIONS ARE IN COMPLIANCE WITH COGCC RULE NO. 215.
- 7) SURFACE AND BOTTOM HOLE LOCATIONS ARE MEASURED 90° FROM SECTION LINES.

I, George R. Bayer, a Professional Land Surveyor in the State of Colorado do hereby certify that this Survey was made under my direct supervision and that this plat represents said Survey.



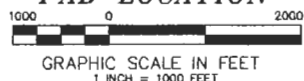
-LEGEND-

FIELD SURVEYED SECTION
CORNER LOCATIONS

FIELD SURVEYED WELL
SHL LOCATION

CALCULATED BOTTOM
HOLE LOCATION

BM 35C-795
PAD LOCATION



Caerus Piceance LLC
CAERUS



WELL LOCATION PLAT

CONSTRUCTION SURVEYS, INC.
0012 SUNRISE BLVD. SILT, CO
81652 (970)876-5753

SURVEY BY: REW 12/10/15

PDOP: 1.9

DRAWN BY: REW 02/10/16

DWG: CAERUS\BM35C-795PLAT_1

REVISED: