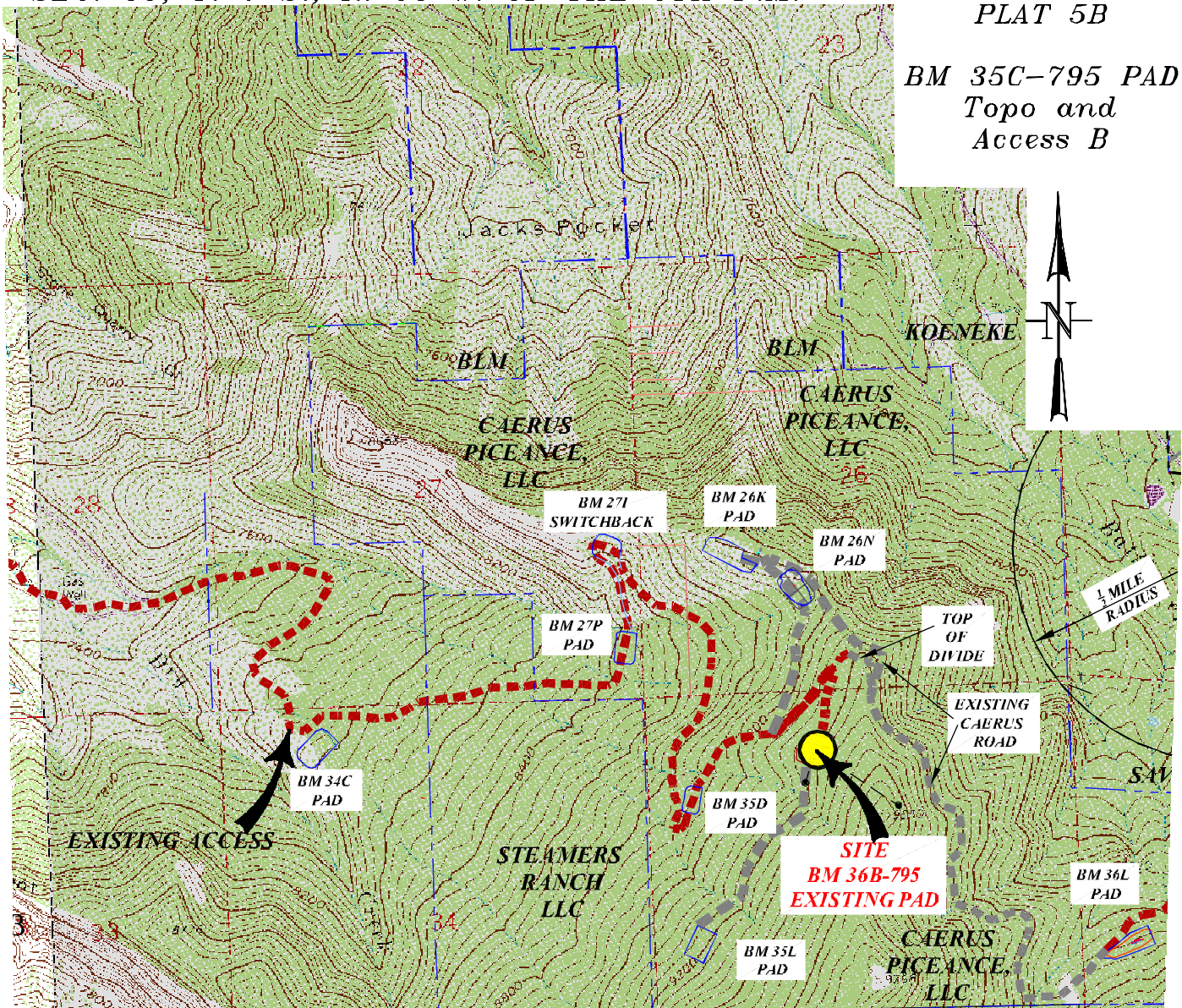


SEC. 35, T. 7 S., R. 95 W. OF THE 6TH P.M.

PLAT 5B

BM 35C-795 PAD  
Topo and  
Access B

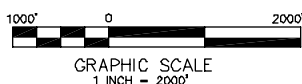


**ACCESS:**

FROM THE UNA BRIDGE, PROCEED ALONG COUNTY ROAD 318 IN A GENERAL EAST/NORTHEAST DIRECTION  $\pm 1.2$  MILES TO THE KLEBOLD/THROM GATE, PROCEED IN A GENERAL EASTERLY/SOUTHEASTERLY DIRECTION ON A PRIVATE DIRT/GRAVEL ROAD  $\pm 1.8$  MILES TO THE APPROXIMATE BLM BOUNDARY, CONTINUE ON THE DIRT/GRAVEL ROAD THRU BLM IN A GENERAL NORTHERLY DIRECTION  $\pm 0.1$  MILES TO THE APPROXIMATE TOM BROWN, INC BOUNDARY, CONTINUE ON THE DIRT/GRAVEL ROAD THRU TOM BROWN, INC PROPERTY IN A GENERAL NORTHEASTERLY/NORTHWESTERLY DIRECTION  $\pm 1.6$  MILES TO AN INTERSECTION WITH A DIRT/GRAVEL ROAD ON THE RIGHT, PROCEED RIGHT IN A GENERAL EASTERLY DIRECTION THRU TOM BROWN, INC PROPERTY  $\pm 0.6$  MILES TO THE APPROXIMATE BLM BOUNDARY, CONTINUE ON THE DIRT/GRAVEL ROAD IN A GENERAL EASTERLY DIRECTION THRU BLM PROPERTY  $\pm 3.1$  MILES TO THE TOM BROWN, INC FEDERAL #28-95 WELL SITE, CONTINUE ALONG THE DIRT/GRAVEL ROAD IN A GENERAL EASTERLY DIRECTION  $\pm 2.3$  MILES TO A 'Y' INTERSECTION, PROCEED LEFT ALONG THE DIRT/GRAVEL ROAD IN A GENERAL EASTERLY DIRECTION  $\pm 0.4$  MILES TO A SWITCHBACK PROCEED UP THE ROADWAY  $\pm 0.9$  MILES TO THE EXISTING 35-D-795 PAD PROCEED THRU THE PAD LOCATION  $\pm 0.5$  MILES TO A DIRT ROAD INTERSECTION, THEN TURN RIGHT AND PROCEED  $\pm 0.2$  MILES TO THE EXISTING PAD 35C-795 LOCATION BEING THE POINT OF DESTINATION.

Battlement Mesa 35-C-795  
NENW, SECTION 35, T. 7 S., R. 95 W.

Caerus Piceance LLC



**TOPO & ACCESS-B**

CONSTRUCTION SURVEYS, INC.  
0012 SUNRISE BLVD. BILT, CO  
81652 (970)876-5753

SURVEY BY: REW 12/10/15

PDOP: 1.9

DRAWN BY: REW 02/15/16

DWG: CAERUS\BM35C-795PLAT\_1

REVISED