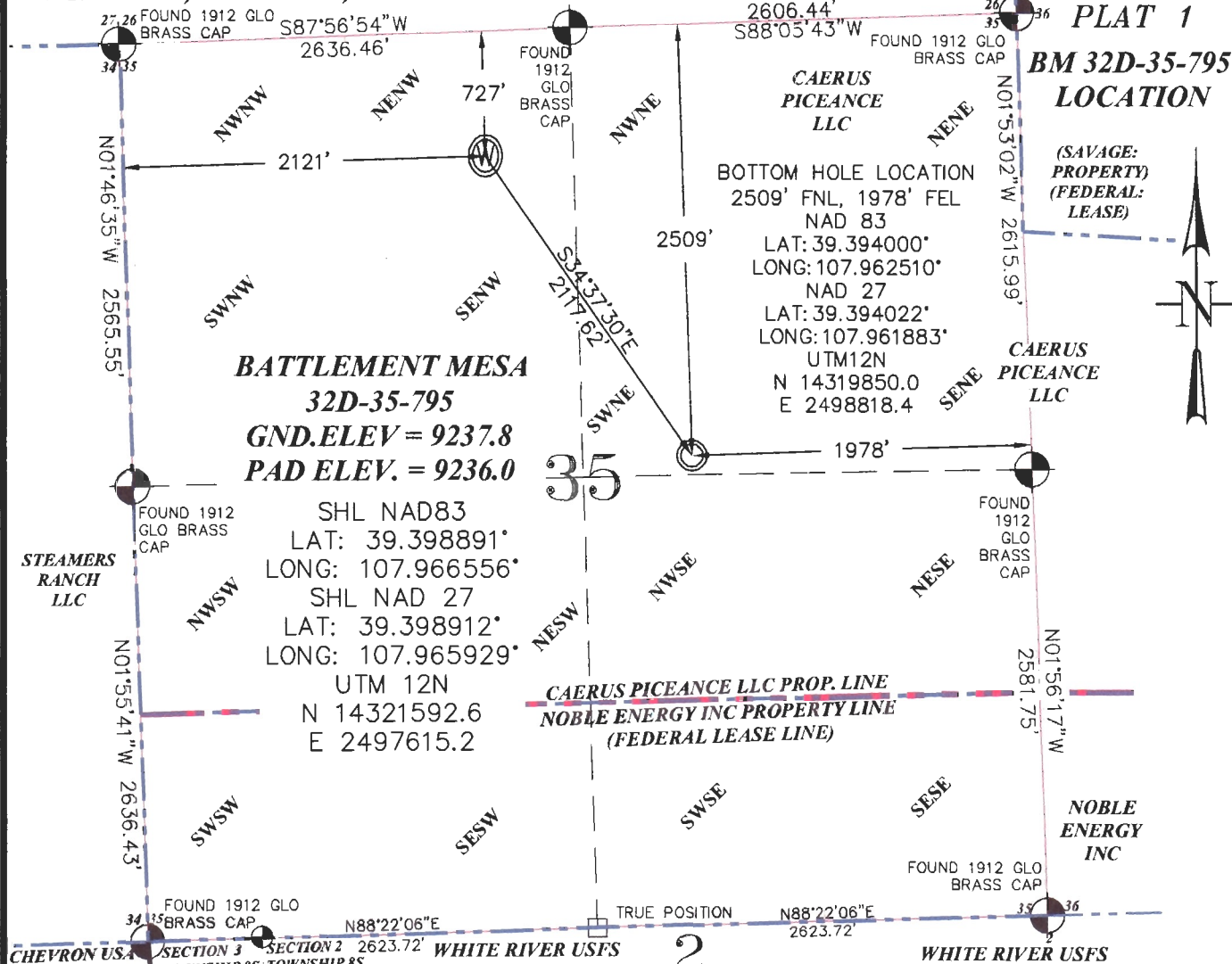


SEC. 35, T. 7 S., R. 95 W. OF THE 6TH P.M.



THIS WELL LOCATION PLAT WAS PREPARED FOR CAERUS PICEANCE LLC TO LOCATE THE BATTLEMENT MESA 32D-35-795 WELL, 727 FEET FROM THE NORTH LINE OF SECTION 35 AND 2121 FEET FROM THE WEST LINE OF SECTION 35, SITUATED IN THE NENW OF SECTION 35, T. 7 S., R. 95 W. OF THE 6TH P.M. GARFIELD COUNTY, COLORADO.

REFERENCE NOTES

- 1) T. 7 S., R. 95 W., 6TH P.M. GLO PLAT.
- 2) U.S.G.S. QUAD: PARACHUTE, CO
- 3) ELEVATIONS BASED ON N.A.V.D. 1988 LIDAR BASED CONTROL PT CP MON 8
- 4) LATITUDES AND LONGITUDES ARE BASED ON NAD 83, COLORADO CENTRAL ZONE.
- 5) GPS OPERATOR ROBERT WOOD, OBSERVED A PDOP OF 1.9.
- 6) ALL GPS OBSERVATIONS ARE IN COMPLIANCE WITH COGCC RULE NO. 215.
- 7) SURFACE AND BOTTOM HOLE LOCATIONS ARE MEASURED 90° FROM SECTION LINES.

-LEGEND-



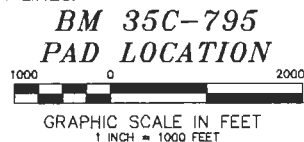
FIELD SURVEYED SECTION CORNER LOCATIONS



FIELD SURVEYED WELL SHL LOCATION



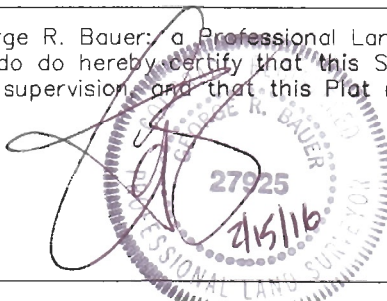
CALCULATED BOTTOM HOLE LOCATION



Caerus Piceance LLC

SURVEYOR'S CERTIFICATE

I, George R. Bauer, a Professional Land Surveyor in the State of Colorado do hereby certify that this Survey was made under my direct supervision and that this Plat represents said Survey.



WELL LOCATION PLAT

CONSTRUCTION SURVEYS, INC.
2012 SUNRISE BLVD. SILT, CO
81652 (970)876-5753

SURVEY BY:REW 12/10/15

PDOP: 1.9

DRAWN BY:REW 02/10/16

DWG: CAERUS\BM35C-795PLAT_1

REVISED: