

SEC. 35, T. 7 S., R. 95 W. OF THE 6TH P.M.

PLAT 1

BM 22C-35-795
LOCATION

(SAVAGE:
PROPERTY)
(FEDERAL:
LEASE)

BATTEMENT MESA

22C-35-795

GND.ELEV = 9236.1

PAD ELEV. = 9236.0

SHL NAD83

LAT: 39.398797°

LONG: 107.966618°

SHL NAD 27

LAT: 39.398819°

LONG: 107.965992°

UTM 12N

N 14321557.9

E 2497598.7

BOTTOM HOLE LOCATION

2305' FNL, 1934' FWL

NAD 83

LAT: 39.394559°

LONG: 107.967232°

NAD 27

LAT: 39.394580°

LONG: 107.966605°

UTM12N

N 14320008.5

E 2497477.2

CAERUS PICEANCE LLC PROP. LINE
NOBLE ENERGY INC PROPERTY LINE
(FEDERAL LEASE LINE)

NOBLE
ENERGY
INC

STEAMERS
RANCH
LLC

CHEVRON USA INC SECTION 3 SECTION 2 TOWNSHIP 8S TOWNSHIP 8S WHITE RIVER USFS

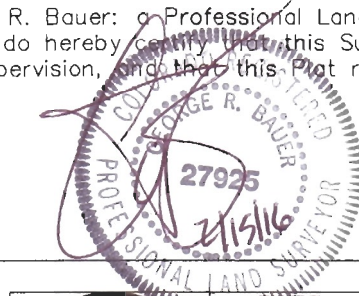
THIS WELL LOCATION PLAT WAS PREPARED FOR CAERUS PICEANCE LLC TO LOCATE THE BATTEMENT MESA 22C-35-795 WELL, 761 FEET FROM THE NORTH LINE OF SECTION 35 AND 2104 FEET FROM THE WEST LINE OF SECTION 35, SITUATED IN THE NENW OF SECTION 35, T. 7 S., R. 95 W. OF THE 6TH P.M. GARFIELD COUNTY, COLORADO.

SURVEYOR'S CERTIFICATE

REFERENCE NOTES

- 1) T. 7 S., R. 95 W., 6TH P.M. GLO PLAT.
- 2) U.S.G.S. QUAD: PARACHUTE, CO
- 3) ELEVATIONS BASED ON N.A.V.D. 1988 LIDAR BASED CONTROL PT CP MON 8
- 4) LATITUDES AND LONGITUDES ARE BASED ON NAD 83, COLORADO CENTRAL ZONE.
- 5) GPS OPERATOR ROBERT WOOD, OBSERVED A PDOP OF 1.9.
- 6) ALL GPS OBSERVATIONS ARE IN COMPLIANCE WITH COGCC RULE NO. 215.
- 7) SURFACE AND BOTTOM HOLE LOCATIONS ARE MEASURED 90° FROM SECTION LINES.

I, George R. Bauer: a Professional Land Surveyor in the State of Colorado do hereby certify that this Survey was made under my direct supervision, and that this Plat represents said Survey.



-LEGEND-

FIELD SURVEYED SECTION CORNER LOCATIONS

FIELD SURVEYED WELL SHL LOCATION

CALCULATED BOTTOM HOLE LOCATION

BM 35C-795
PAD LOCATION

GRAPHIC SCALE IN FEET
1 INCH = 1000 FEET

Caerus Piceance LLC

WELL LOCATION PLAT

CONSTRUCTION SURVEYS, INC.
2012 SUNRISE BLVD. SILT, CO
81652 (970) 876-5753



SURVEY BY: REW 12/10/15

PDOP: 1.9

DRAWN BY: REW 02/10/16

DWG: CAERUS\BM35C-795PLAT_1

REVISED: