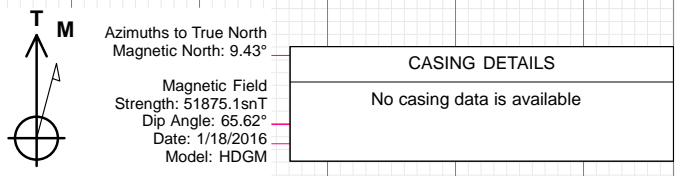
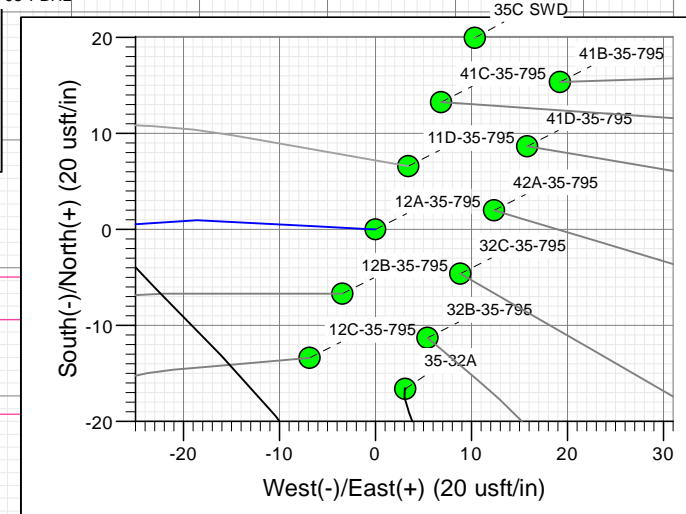
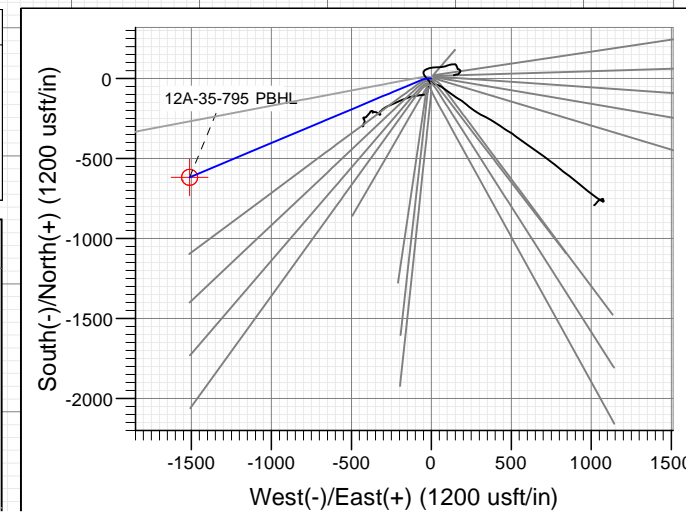
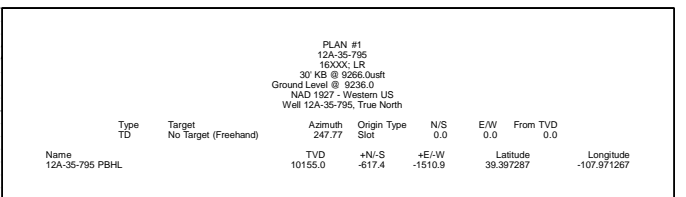
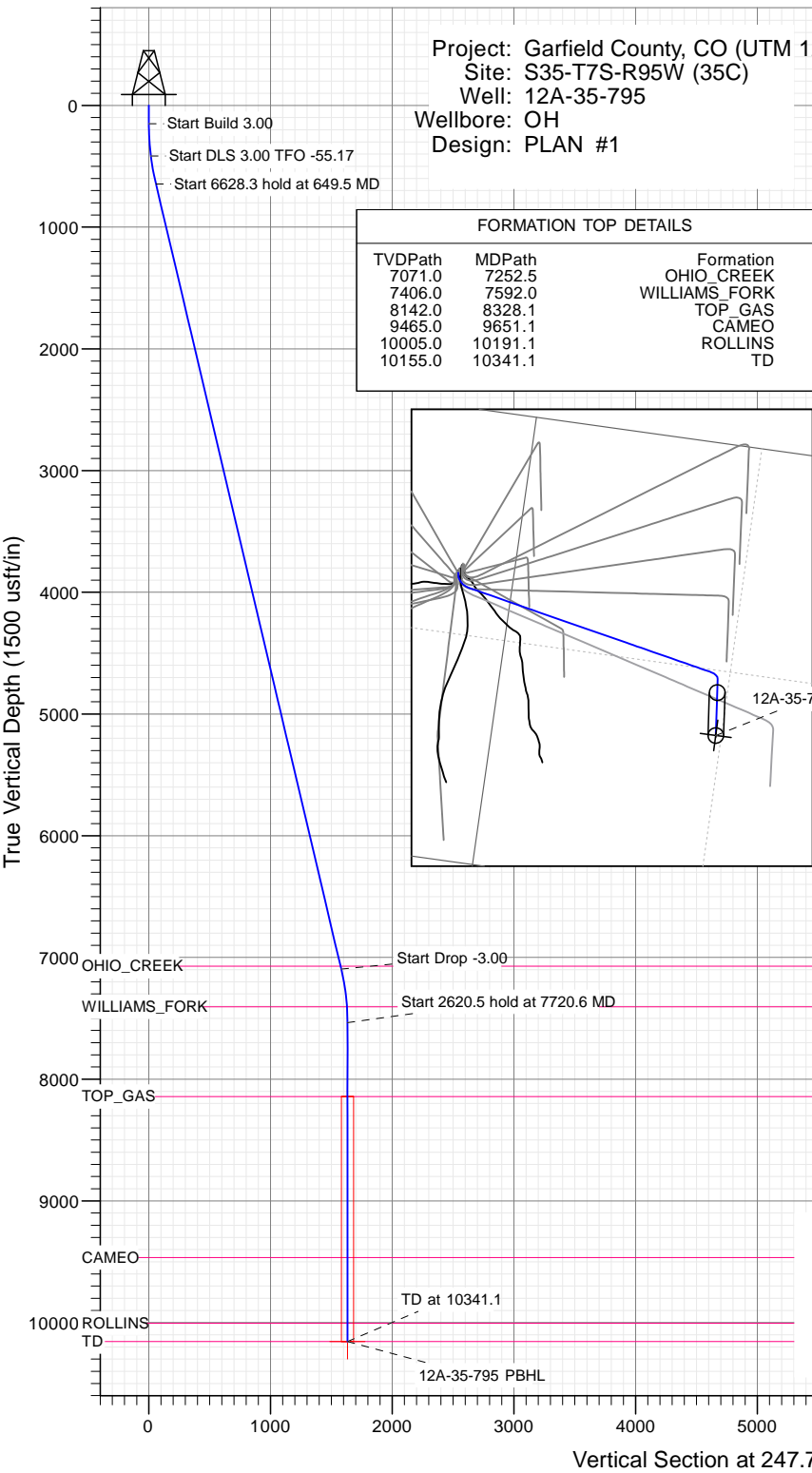




SECTION DETAILS

Sec	MD	Inc	Azi	TVD	+N/-S	+E/-W	Dleg	TFace	Vsect	Target
1	0.0	0.00	0.00	0.0	0.0	0.0	0.00	0.00	0.0	
2	150.0	0.00	0.00	150.0	0.0	0.0	0.00	0.00	0.0	
3	416.7	8.00	273.00	415.8	1.0	-18.6	3.00	273.00	16.8	
4	649.5	13.28	247.24	644.7	-8.5	-59.5	3.00	-55.17	58.3	
5	7277.8	13.28	247.24	7095.7	-597.7	-1463.8	0.00	0.00	1581.1	
6	7720.6	0.00	0.00	7534.5	-617.4	-1510.9	3.00	180.00	1632.2	
7	10341.1	0.00	0.00	10155.0	-617.4	-1510.9	0.00	0.00	1632.2	12A-35-795 PBHL



WELL DETAILS: 12A-35-795

+N/-S	+E/-W	Northing	Ground Level:	Easting	Latitude	Longitude
0.0	0.0	14321617.90	9236.0	2497616.10	39.398982	-107.965923



Cathedral Energy Services

Planning Report

Database:	USA EDM 5000 Multi Users DB	Local Co-ordinate Reference:	Well 12A-35-795
Company:	Caerus Oil & Gas	TVD Reference:	30' KB @ 9266.0usft
Project:	Garfield County, CO (UTM 12N)	MD Reference:	30' KB @ 9266.0usft
Site:	S35-T7S-R95W (35C)	North Reference:	True
Well:	12A-35-795	Survey Calculation Method:	Minimum Curvature
Wellbore:	OH		
Design:	PLAN #1		

Project	Garfield County, CO (UTM 12N)		
Map System:	Universal Transverse Mercator (US Survey Feet)	System Datum:	Mean Sea Level
Geo Datum:	NAD 1927 - Western US		
Map Zone:	Zone 12N (114 W to 108 W)		

Site		S35-T7S-R95W (35C)			
Site Position:		Northing:	14,321,562.10 usft	Latitude:	39.398831
From:	Map	Easting:	2,497,589.70 usft	Longitude:	-107.966023
Position Uncertainty:	0.0 usft	Slot Radius:	13-3/16 "	Grid Convergence:	1.93 °

Well	12A-35-795					
Well Position	+N/-S	0.0 usft	Northing:	14,321,617.90 usft	Latitude:	39.398982
	+E/-W	0.0 usft	Easting:	2,497,616.10 usft	Longitude:	-107.965923
Position Uncertainty		0.0 usft	Wellhead Elevation:	0.0 usft	Ground Level:	9,236.0 usft

Wellbore	OH				
Magnetics	Model Name	Sample Date	Declination	Dip Angle	Field Strength
			(°)	(°)	(nT)
	HDGM	1/18/2016	9.43	65.62	51,875

Design	PLAN #1			
Audit Notes:				
Version:	Phase:	PLAN	Tie On Depth:	0.0
Vertical Section:	Depth From (TVD)	+N/-S	+E/-W	Direction
	(usft)	(usft)	(usft)	(°)
	0.0	0.0	0.0	247.77

Plan Sections										
Measured Depth (usft)	Inclination (°)	Azimuth (°)	Vertical Depth (usft)	+N/-S (usft)	+E/-W (usft)	Dogleg Rate (°/100usft)	Build Rate (°/100usft)	Turn Rate (°/100usft)	TFO (°)	Target
0.0	0.00	0.00	0.0	0.0	0.0	0.00	0.00	0.00	0.00	
150.0	0.00	0.00	150.0	0.0	0.0	0.00	0.00	0.00	0.00	
416.7	8.00	273.00	415.8	1.0	-18.6	3.00	3.00	0.00	273.00	
649.5	13.28	247.24	644.7	-8.5	-59.5	3.00	2.27	-11.06	-55.17	
7,277.8	13.28	247.24	7,095.7	-597.7	-1,463.8	0.00	0.00	0.00	0.00	
7,720.6	0.00	0.00	7,534.5	-617.4	-1,510.9	3.00	-3.00	0.00	180.00	
10,341.1	0.00	0.00	10,155.0	-617.4	-1,510.9	0.00	0.00	0.00	0.00	12A-35-795 PBHL

Cathedral Energy Services

Planning Report

Database:	USA EDM 5000 Multi Users DB	Local Co-ordinate Reference:	Well 12A-35-795
Company:	Caerus Oil & Gas	TVD Reference:	30' KB @ 9266.0usft
Project:	Garfield County, CO (UTM 12N)	MD Reference:	30' KB @ 9266.0usft
Site:	S35-T7S-R95W (35C)	North Reference:	True
Well:	12A-35-795	Survey Calculation Method:	Minimum Curvature
Wellbore:	OH		
Design:	PLAN #1		

Planned Survey

Measured Depth (usft)	Inclination (°)	Azimuth (°)	Vertical Depth (usft)	+N/-S (usft)	+E/-W (usft)	Vertical Section (usft)	Dogleg Rate (°/100usft)	Build Rate (°/100u)	Comments / Formations
0.0	0.00	0.00	0.0	0.0	0.0	0.0	0.00	0.00	
100.0	0.00	0.00	100.0	0.0	0.0	0.0	0.00	0.00	
150.0	0.00	0.00	150.0	0.0	0.0	0.0	0.00	0.00	Start Build 3.00
200.0	1.50	273.00	200.0	0.0	-0.7	0.6	3.00	3.00	
300.0	4.50	273.00	299.8	0.3	-5.9	5.3	3.00	3.00	
400.0	7.50	273.00	399.3	0.9	-16.3	14.8	3.00	3.00	
416.7	8.00	273.00	415.8	1.0	-18.6	16.8	3.00	3.00	Start DLS 3.00 TFO -55.17
500.0	9.65	260.66	498.2	0.1	-31.2	28.9	3.00	1.98	
600.0	12.02	250.79	596.4	-4.6	-49.3	47.4	3.00	2.37	
649.5	13.28	247.24	644.7	-8.5	-59.5	58.3	3.00	2.56	Start 6628.3 hold at 649.5 MD
700.0	13.28	247.24	693.8	-13.0	-70.2	69.9	0.00	0.00	
800.0	13.28	247.24	791.1	-21.9	-91.3	92.8	0.00	0.00	
900.0	13.28	247.24	888.5	-30.8	-112.5	115.8	0.00	0.00	
1,000.0	13.28	247.24	985.8	-39.7	-133.7	138.8	0.00	0.00	
1,100.0	13.28	247.24	1,083.1	-48.6	-154.9	161.8	0.00	0.00	
1,200.0	13.28	247.24	1,180.4	-57.5	-176.1	184.7	0.00	0.00	
1,300.0	13.28	247.24	1,277.8	-66.4	-197.3	207.7	0.00	0.00	
1,400.0	13.28	247.24	1,375.1	-75.2	-218.5	230.7	0.00	0.00	
1,500.0	13.28	247.24	1,472.4	-84.1	-239.7	253.7	0.00	0.00	
1,600.0	13.28	247.24	1,569.7	-93.0	-260.8	276.6	0.00	0.00	
1,700.0	13.28	247.24	1,667.1	-101.9	-282.0	299.6	0.00	0.00	
1,800.0	13.28	247.24	1,764.4	-110.8	-303.2	322.6	0.00	0.00	
1,900.0	13.28	247.24	1,861.7	-119.7	-324.4	345.6	0.00	0.00	
2,000.0	13.28	247.24	1,959.0	-128.6	-345.6	368.5	0.00	0.00	
2,100.0	13.28	247.24	2,056.4	-137.5	-366.8	391.5	0.00	0.00	
2,200.0	13.28	247.24	2,153.7	-146.3	-388.0	414.5	0.00	0.00	
2,300.0	13.28	247.24	2,251.0	-155.2	-409.1	437.5	0.00	0.00	
2,400.0	13.28	247.24	2,348.3	-164.1	-430.3	460.4	0.00	0.00	
2,500.0	13.28	247.24	2,445.7	-173.0	-451.5	483.4	0.00	0.00	
2,600.0	13.28	247.24	2,543.0	-181.9	-472.7	506.4	0.00	0.00	
2,700.0	13.28	247.24	2,640.3	-190.8	-493.9	529.4	0.00	0.00	
2,800.0	13.28	247.24	2,737.6	-199.7	-515.1	552.3	0.00	0.00	
2,900.0	13.28	247.24	2,835.0	-208.6	-536.3	575.3	0.00	0.00	
3,000.0	13.28	247.24	2,932.3	-217.5	-557.5	598.3	0.00	0.00	
3,100.0	13.28	247.24	3,029.6	-226.3	-578.6	621.3	0.00	0.00	
3,200.0	13.28	247.24	3,126.9	-235.2	-599.8	644.2	0.00	0.00	
3,300.0	13.28	247.24	3,224.3	-244.1	-621.0	667.2	0.00	0.00	
3,400.0	13.28	247.24	3,321.6	-253.0	-642.2	690.2	0.00	0.00	
3,500.0	13.28	247.24	3,418.9	-261.9	-663.4	713.2	0.00	0.00	
3,600.0	13.28	247.24	3,516.2	-270.8	-684.6	736.1	0.00	0.00	
3,700.0	13.28	247.24	3,613.6	-279.7	-705.8	759.1	0.00	0.00	
3,800.0	13.28	247.24	3,710.9	-288.6	-727.0	782.1	0.00	0.00	
3,900.0	13.28	247.24	3,808.2	-297.4	-748.1	805.1	0.00	0.00	
4,000.0	13.28	247.24	3,905.5	-306.3	-769.3	828.0	0.00	0.00	
4,100.0	13.28	247.24	4,002.9	-315.2	-790.5	851.0	0.00	0.00	
4,200.0	13.28	247.24	4,100.2	-324.1	-811.7	874.0	0.00	0.00	
4,300.0	13.28	247.24	4,197.5	-333.0	-832.9	897.0	0.00	0.00	
4,400.0	13.28	247.24	4,294.8	-341.9	-854.1	919.9	0.00	0.00	
4,500.0	13.28	247.24	4,392.2	-350.8	-875.3	942.9	0.00	0.00	
4,600.0	13.28	247.24	4,489.5	-359.7	-896.4	965.9	0.00	0.00	
4,700.0	13.28	247.24	4,586.8	-368.6	-917.6	988.9	0.00	0.00	
4,800.0	13.28	247.24	4,684.1	-377.4	-938.8	1,011.8	0.00	0.00	

Cathedral Energy Services

Planning Report

Database:	USA EDM 5000 Multi Users DB	Local Co-ordinate Reference:	Well 12A-35-795
Company:	Caerus Oil & Gas	TVD Reference:	30' KB @ 9266.0usft
Project:	Garfield County, CO (UTM 12N)	MD Reference:	30' KB @ 9266.0usft
Site:	S35-T7S-R95W (35C)	North Reference:	True
Well:	12A-35-795	Survey Calculation Method:	Minimum Curvature
Wellbore:	OH		
Design:	PLAN #1		

Planned Survey									
Measured Depth (usft)	Inclination (°)	Azimuth (°)	Vertical Depth (usft)	+N/-S (usft)	+E/-W (usft)	Vertical Section (usft)	Dogleg Rate (°/100usft)	Build Rate (°/100u)	Comments / Formations
4,900.0	13.28	247.24	4,781.5	-386.3	-960.0	1,034.8	0.00	0.00	
5,000.0	13.28	247.24	4,878.8	-395.2	-981.2	1,057.8	0.00	0.00	
5,100.0	13.28	247.24	4,976.1	-404.1	-1,002.4	1,080.8	0.00	0.00	
5,200.0	13.28	247.24	5,073.4	-413.0	-1,023.6	1,103.7	0.00	0.00	
5,300.0	13.28	247.24	5,170.8	-421.9	-1,044.8	1,126.7	0.00	0.00	
5,400.0	13.28	247.24	5,268.1	-430.8	-1,065.9	1,149.7	0.00	0.00	
5,500.0	13.28	247.24	5,365.4	-439.7	-1,087.1	1,172.7	0.00	0.00	
5,600.0	13.28	247.24	5,462.7	-448.5	-1,108.3	1,195.6	0.00	0.00	
5,700.0	13.28	247.24	5,560.1	-457.4	-1,129.5	1,218.6	0.00	0.00	
5,800.0	13.28	247.24	5,657.4	-466.3	-1,150.7	1,241.6	0.00	0.00	
5,900.0	13.28	247.24	5,754.7	-475.2	-1,171.9	1,264.6	0.00	0.00	
6,000.0	13.28	247.24	5,852.0	-484.1	-1,193.1	1,287.5	0.00	0.00	
6,100.0	13.28	247.24	5,949.4	-493.0	-1,214.3	1,310.5	0.00	0.00	
6,200.0	13.28	247.24	6,046.7	-501.9	-1,235.4	1,333.5	0.00	0.00	
6,300.0	13.28	247.24	6,144.0	-510.8	-1,256.6	1,356.5	0.00	0.00	
6,400.0	13.28	247.24	6,241.3	-519.7	-1,277.8	1,379.4	0.00	0.00	
6,500.0	13.28	247.24	6,338.7	-528.5	-1,299.0	1,402.4	0.00	0.00	
6,600.0	13.28	247.24	6,436.0	-537.4	-1,320.2	1,425.4	0.00	0.00	
6,700.0	13.28	247.24	6,533.3	-546.3	-1,341.4	1,448.4	0.00	0.00	
6,800.0	13.28	247.24	6,630.6	-555.2	-1,362.6	1,471.3	0.00	0.00	
6,900.0	13.28	247.24	6,728.0	-564.1	-1,383.8	1,494.3	0.00	0.00	
7,000.0	13.28	247.24	6,825.3	-573.0	-1,404.9	1,517.3	0.00	0.00	
7,100.0	13.28	247.24	6,922.6	-581.9	-1,426.1	1,540.3	0.00	0.00	
7,200.0	13.28	247.24	7,019.9	-590.8	-1,447.3	1,563.2	0.00	0.00	
7,252.5	13.28	247.24	7,071.0	-595.4	-1,458.4	1,575.3	0.00	0.00	OHIO_CREEK
7,277.8	13.28	247.24	7,095.7	-597.7	-1,463.8	1,581.1	0.00	0.00	Start Drop -3.00
7,300.0	12.62	247.24	7,117.3	-599.6	-1,468.4	1,586.1	3.00	-3.00	
7,400.0	9.62	247.24	7,215.4	-607.1	-1,486.2	1,605.4	3.00	-3.00	
7,500.0	6.62	247.24	7,314.4	-612.5	-1,499.2	1,619.5	3.00	-3.00	
7,592.0	3.86	247.24	7,406.0	-615.8	-1,506.9	1,627.9	3.00	-3.00	WILLIAMS_FORK
7,600.0	3.62	247.24	7,414.0	-616.0	-1,507.4	1,628.4	3.00	-3.00	
7,700.0	0.62	247.24	7,513.9	-617.4	-1,510.8	1,632.1	3.00	-3.00	
7,720.6	0.00	0.00	7,534.5	-617.4	-1,510.9	1,632.2	3.00	-3.00	Start 2620.5 hold at 7720.6 MD
7,800.0	0.00	0.00	7,613.9	-617.4	-1,510.9	1,632.2	0.00	0.00	
7,900.0	0.00	0.00	7,713.9	-617.4	-1,510.9	1,632.2	0.00	0.00	
8,000.0	0.00	0.00	7,813.9	-617.4	-1,510.9	1,632.2	0.00	0.00	
8,100.0	0.00	0.00	7,913.9	-617.4	-1,510.9	1,632.2	0.00	0.00	
8,200.0	0.00	0.00	8,013.9	-617.4	-1,510.9	1,632.2	0.00	0.00	
8,300.0	0.00	0.00	8,113.9	-617.4	-1,510.9	1,632.2	0.00	0.00	
8,328.1	0.00	0.00	8,142.0	-617.4	-1,510.9	1,632.2	0.00	0.00	TOP_GAS
8,400.0	0.00	0.00	8,213.9	-617.4	-1,510.9	1,632.2	0.00	0.00	
8,500.0	0.00	0.00	8,313.9	-617.4	-1,510.9	1,632.2	0.00	0.00	
8,600.0	0.00	0.00	8,413.9	-617.4	-1,510.9	1,632.2	0.00	0.00	
8,700.0	0.00	0.00	8,513.9	-617.4	-1,510.9	1,632.2	0.00	0.00	
8,800.0	0.00	0.00	8,613.9	-617.4	-1,510.9	1,632.2	0.00	0.00	
8,900.0	0.00	0.00	8,713.9	-617.4	-1,510.9	1,632.2	0.00	0.00	
9,000.0	0.00	0.00	8,813.9	-617.4	-1,510.9	1,632.2	0.00	0.00	
9,100.0	0.00	0.00	8,913.9	-617.4	-1,510.9	1,632.2	0.00	0.00	
9,200.0	0.00	0.00	9,013.9	-617.4	-1,510.9	1,632.2	0.00	0.00	
9,300.0	0.00	0.00	9,113.9	-617.4	-1,510.9	1,632.2	0.00	0.00	
9,400.0	0.00	0.00	9,213.9	-617.4	-1,510.9	1,632.2	0.00	0.00	
9,500.0	0.00	0.00	9,313.9	-617.4	-1,510.9	1,632.2	0.00	0.00	

Cathedral Energy Services

Planning Report

Database:	USA EDM 5000 Multi Users DB	Local Co-ordinate Reference:	Well 12A-35-795
Company:	Caerus Oil & Gas	TVD Reference:	30' KB @ 9266.0usft
Project:	Garfield County, CO (UTM 12N)	MD Reference:	30' KB @ 9266.0usft
Site:	S35-T7S-R95W (35C)	North Reference:	True
Well:	12A-35-795	Survey Calculation Method:	Minimum Curvature
Wellbore:	OH		
Design:	PLAN #1		

Planned Survey

Measured Depth (usft)	Inclination (°)	Azimuth (°)	Vertical Depth (usft)	+N/-S (usft)	+E/-W (usft)	Vertical Section (usft)	Dogleg Rate (°/100usft)	Build Rate (°/100u)	Comments / Formations
9,600.0	0.00	0.00	9,413.9	-617.4	-1,510.9	1,632.2	0.00	0.00	
9,651.1	0.00	0.00	9,465.0	-617.4	-1,510.9	1,632.2	0.00	0.00	CAMEO
9,700.0	0.00	0.00	9,513.9	-617.4	-1,510.9	1,632.2	0.00	0.00	
9,800.0	0.00	0.00	9,613.9	-617.4	-1,510.9	1,632.2	0.00	0.00	
9,900.0	0.00	0.00	9,713.9	-617.4	-1,510.9	1,632.2	0.00	0.00	
10,000.0	0.00	0.00	9,813.9	-617.4	-1,510.9	1,632.2	0.00	0.00	
10,100.0	0.00	0.00	9,913.9	-617.4	-1,510.9	1,632.2	0.00	0.00	
10,191.1	0.00	0.00	10,005.0	-617.4	-1,510.9	1,632.2	0.00	0.00	ROLLINS
10,200.0	0.00	0.00	10,013.9	-617.4	-1,510.9	1,632.2	0.00	0.00	
10,300.0	0.00	0.00	10,113.9	-617.4	-1,510.9	1,632.2	0.00	0.00	
10,341.1	0.00	0.00	10,155.0	-617.4	-1,510.9	1,632.2	0.00	0.00	TD at 10341.1 - TD

Targets

Target Name	Dip Angle (°)	Dip Dir. (°)	TVD (usft)	+N/-S (usft)	+E/-W (usft)	Northing (usft)	Easting (usft)	Latitude	Longitude
- hit/miss target									
- Shape									
12A-35-795 PBHL	0.00	0.00	10,155.0	-617.4	-1,510.9	14,320,950.00	2,496,126.80	39.397287	-107.971267
- plan hits target center									
- Circle (radius 50.0)									

Formations

Measured Depth (usft)	Vertical Depth (usft)	Name	Lithology	Dip (°)	Dip Direction (°)
7,252.5	7,071.0	OHIO_CREEK			
7,592.0	7,406.0	WILLIAMS_FORK			
8,328.1	8,142.0	TOP_GAS			
9,651.1	9,465.0	CAMEO		0.00	
10,191.1	10,005.0	ROLLINS			
10,341.1	10,155.0	TD			

Plan Annotations

Measured Depth (usft)	Vertical Depth (usft)	+N/-S (usft)	+E/-W (usft)	Comment
150.0	150.0	0.0	0.0	Start Build 3.00
416.7	415.8	1.0	-18.6	Start DLS 3.00 TFO -55.17
649.5	644.7	-8.5	-59.5	Start 6628.3 hold at 649.5 MD
7,277.8	7,095.7	-597.7	-1,463.8	Start Drop -3.00
7,720.6	7,534.5	-617.4	-1,510.9	Start 2620.5 hold at 7720.6 MD
10,341.1	10,155.0	-617.4	-1,510.9	TD at 10341.1