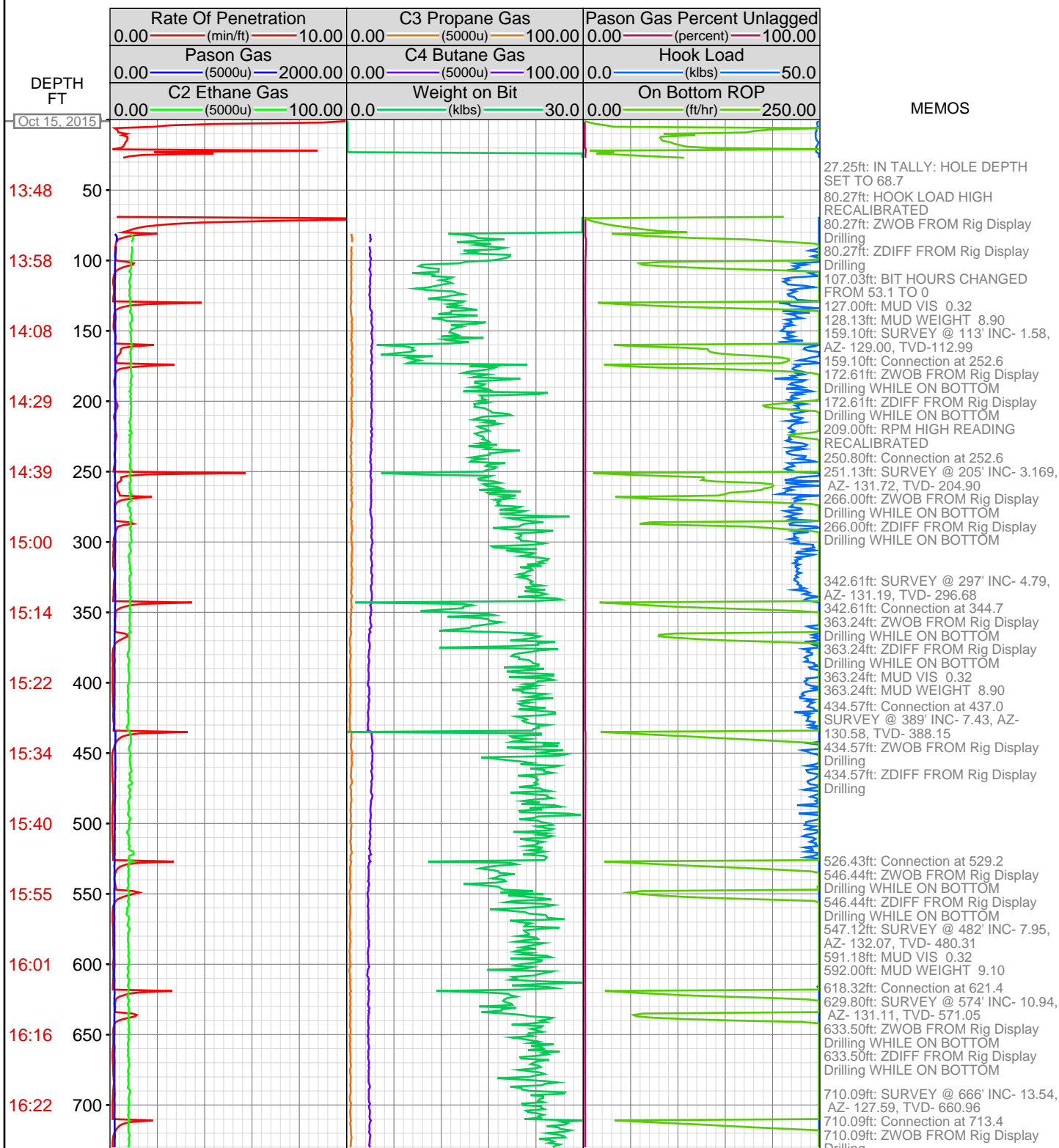
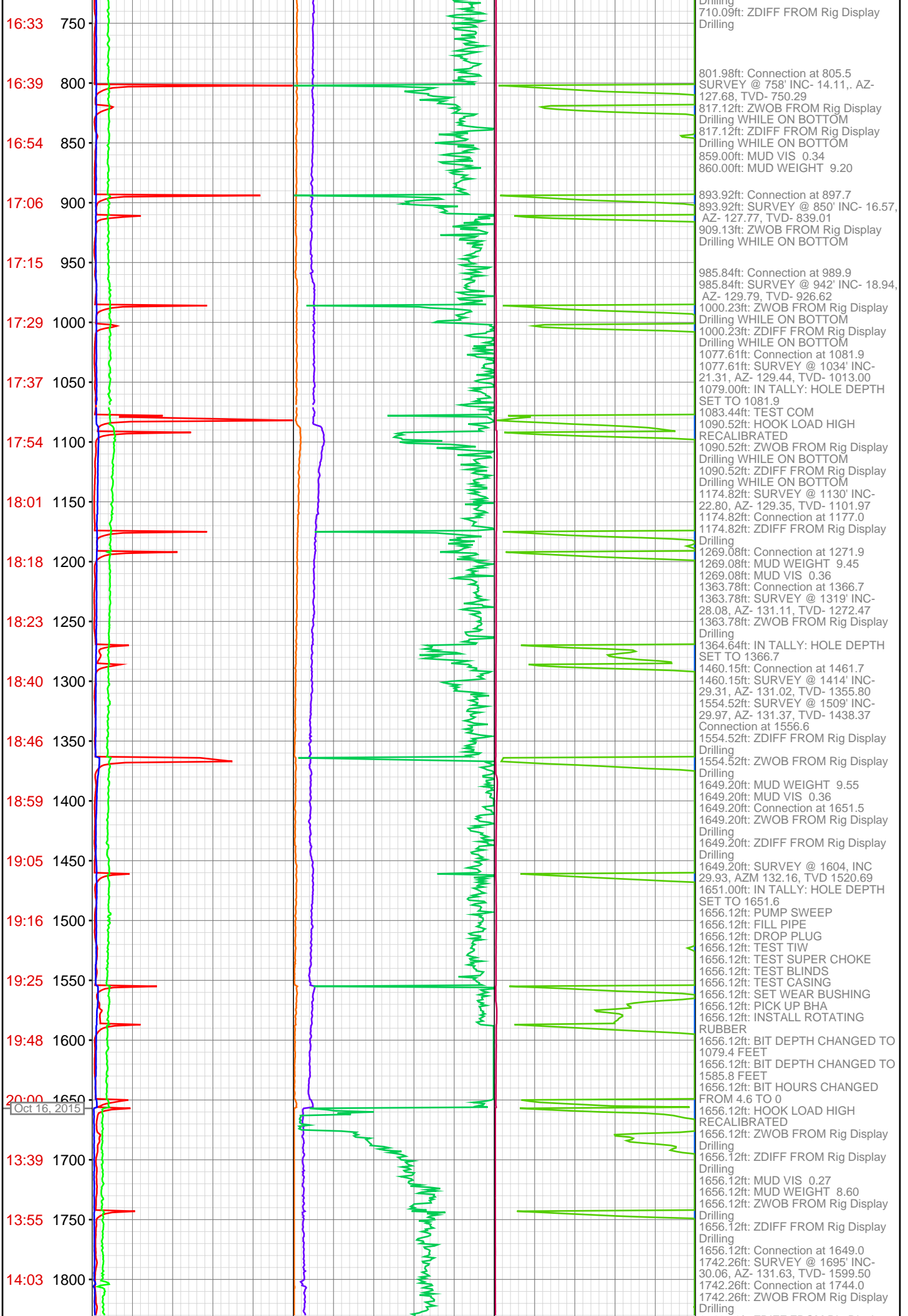
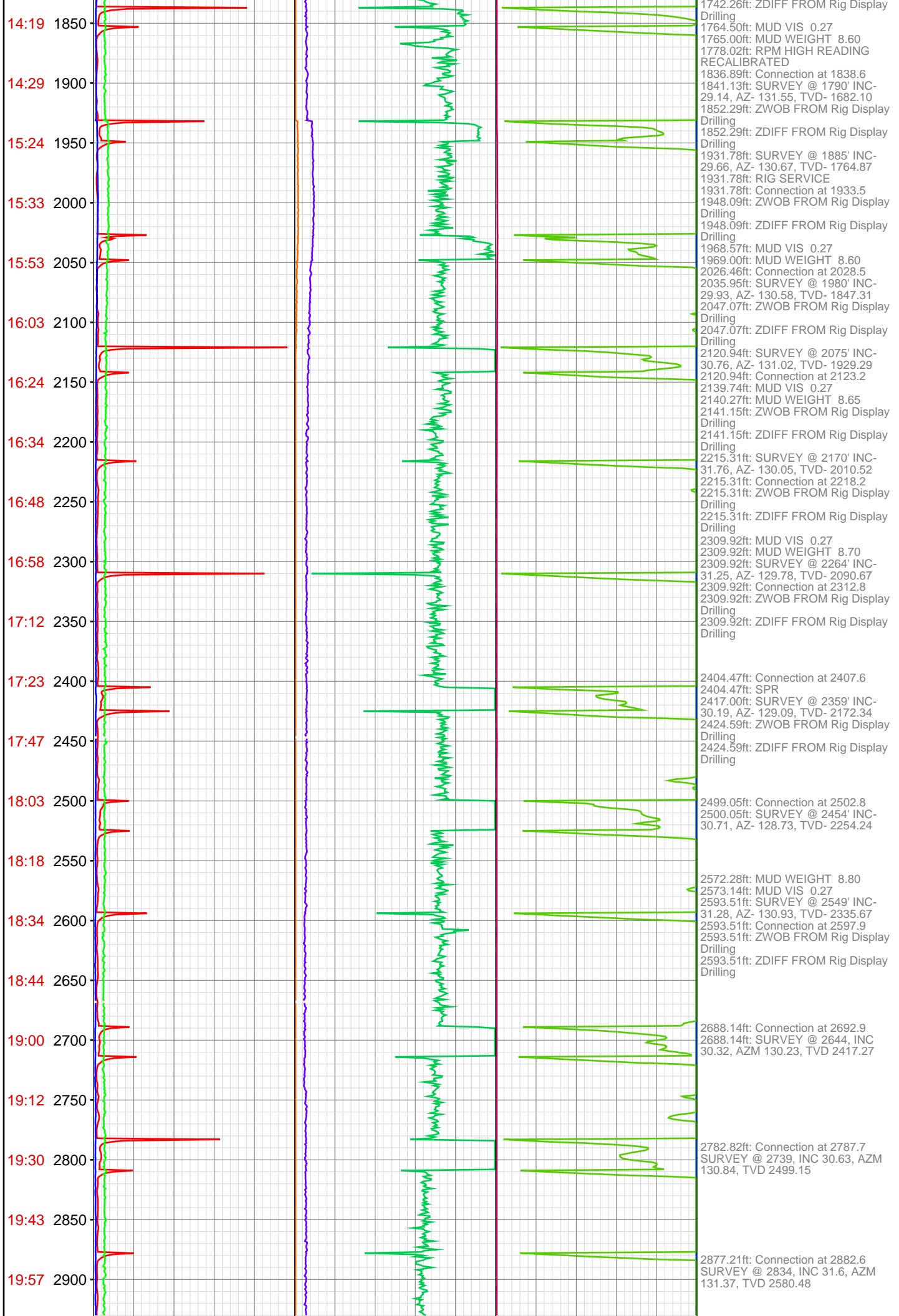


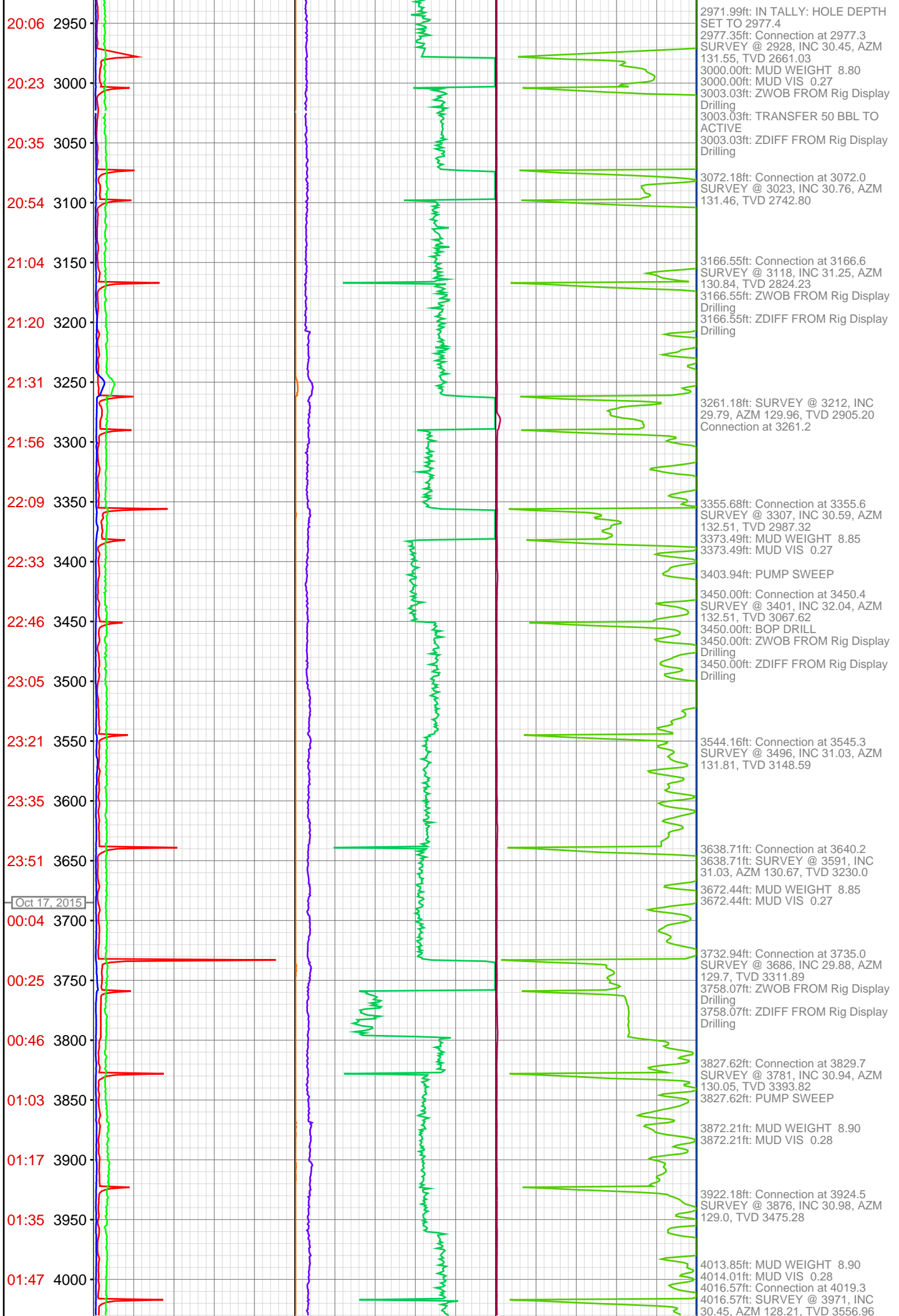
**OPERATOR:** Piceance Energy, LLC  
**WELL:** PICEANCE FEDERAL 28-20E  
**FIELD:**  
**LOCATION:** SEC 28 TWP 9S RNG 93W  
**COUNTRY:** USA  
**RIG:** Pat-UTI 306

**CONTRACTOR:** Patterson-UTI Drilling Company  
**UNIQUE WELL ID:** 05-077-10256-00  
**SPUD DATE:** Oct 15, 2015 14:00  
**RELEASE DATE:**

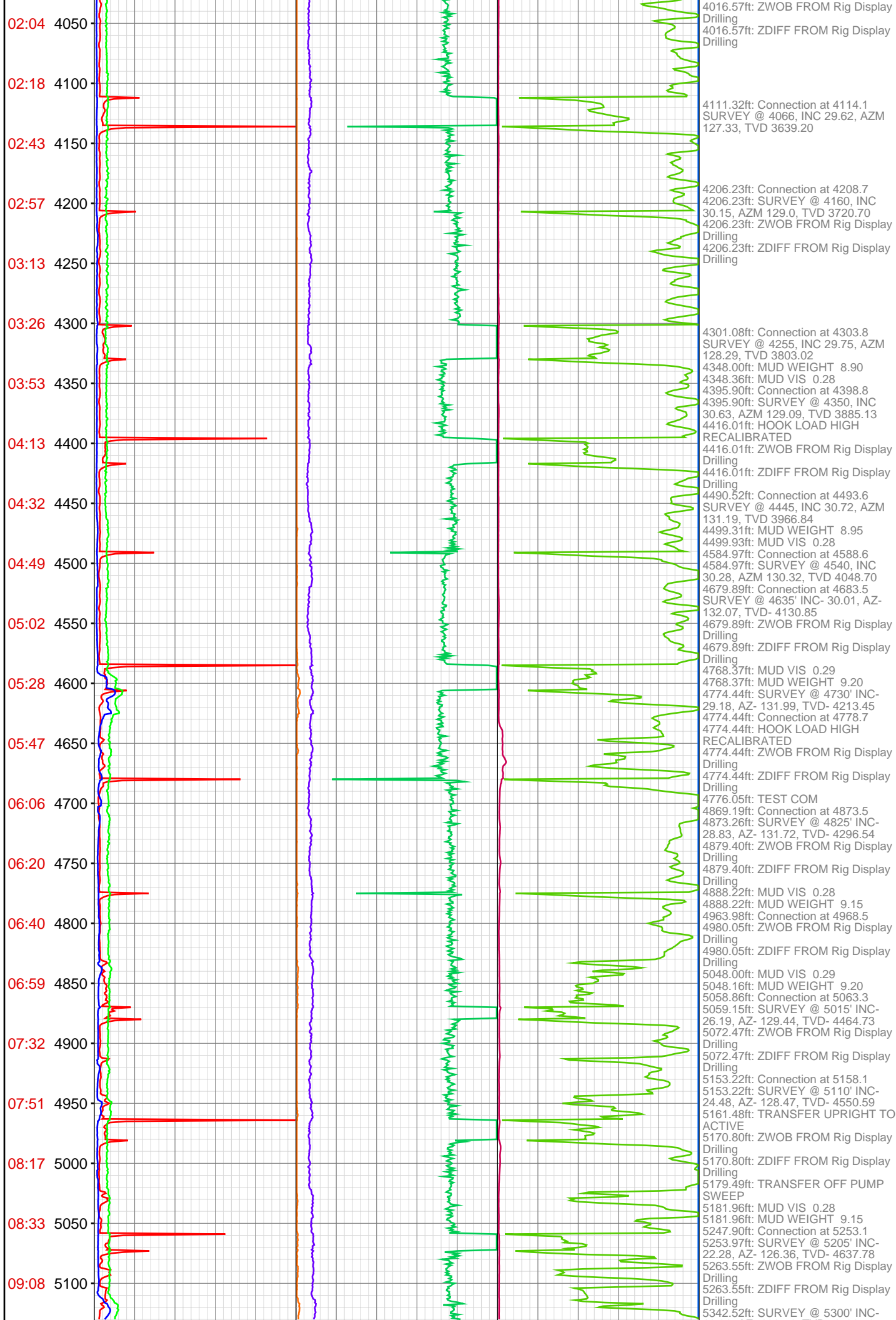


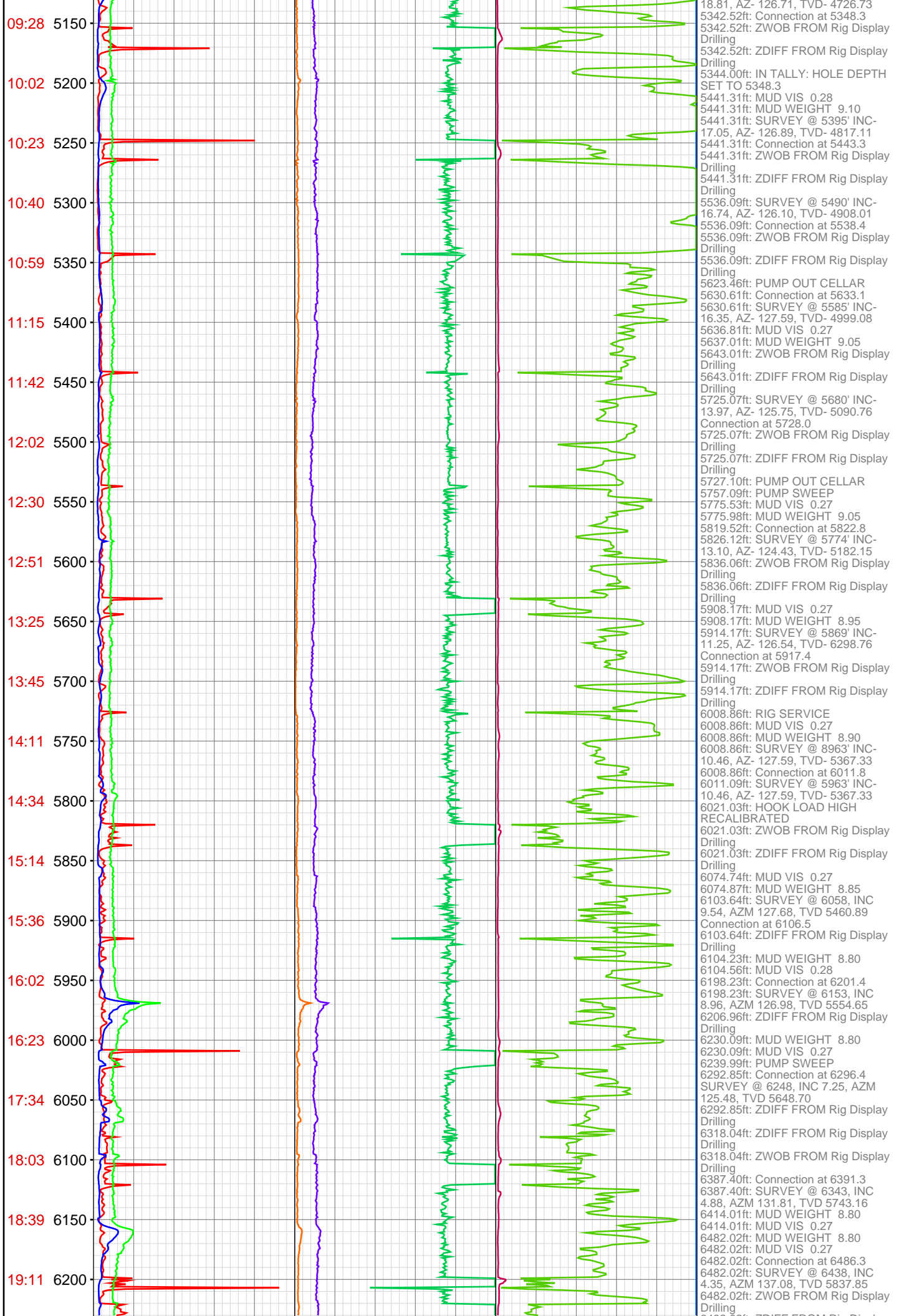


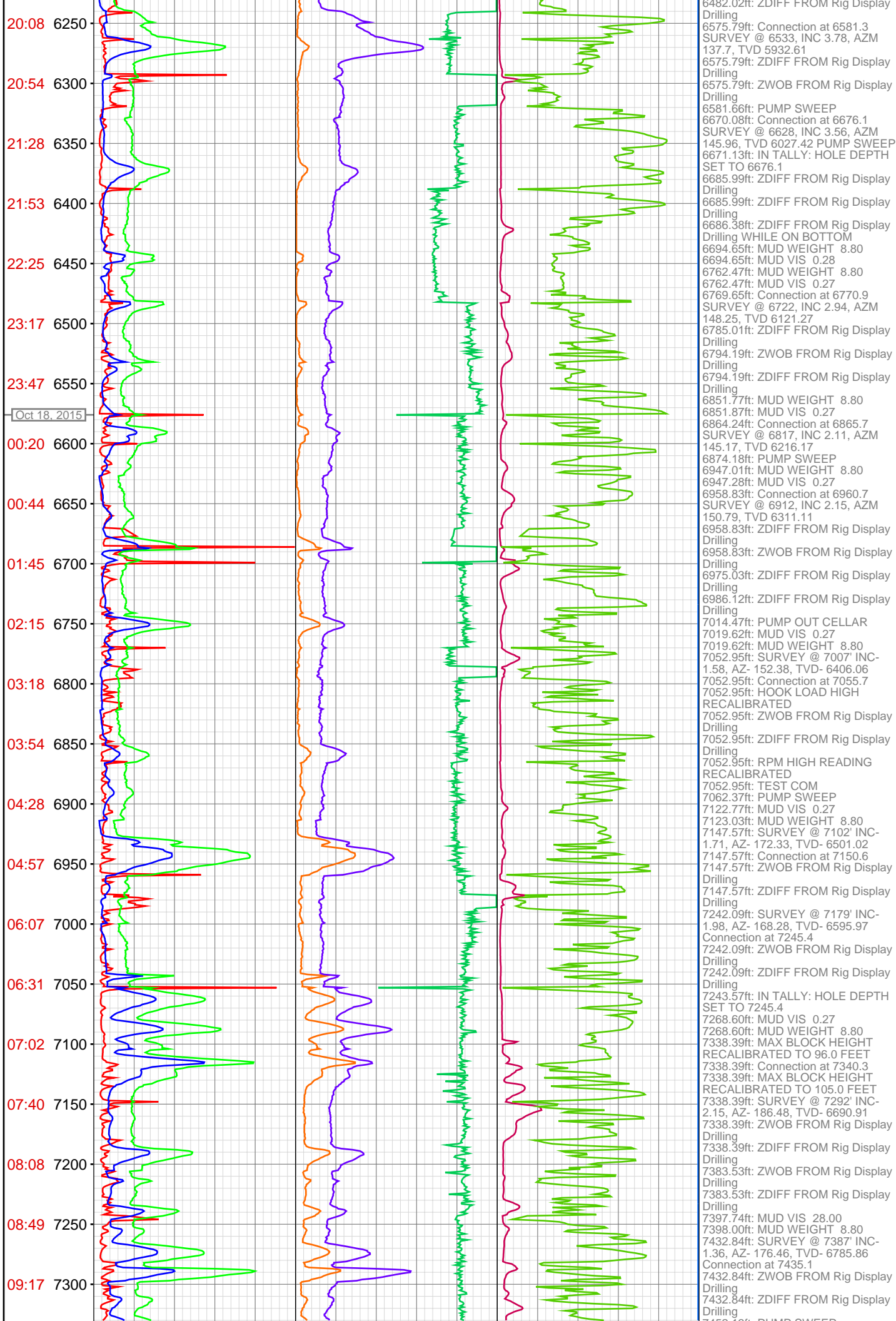




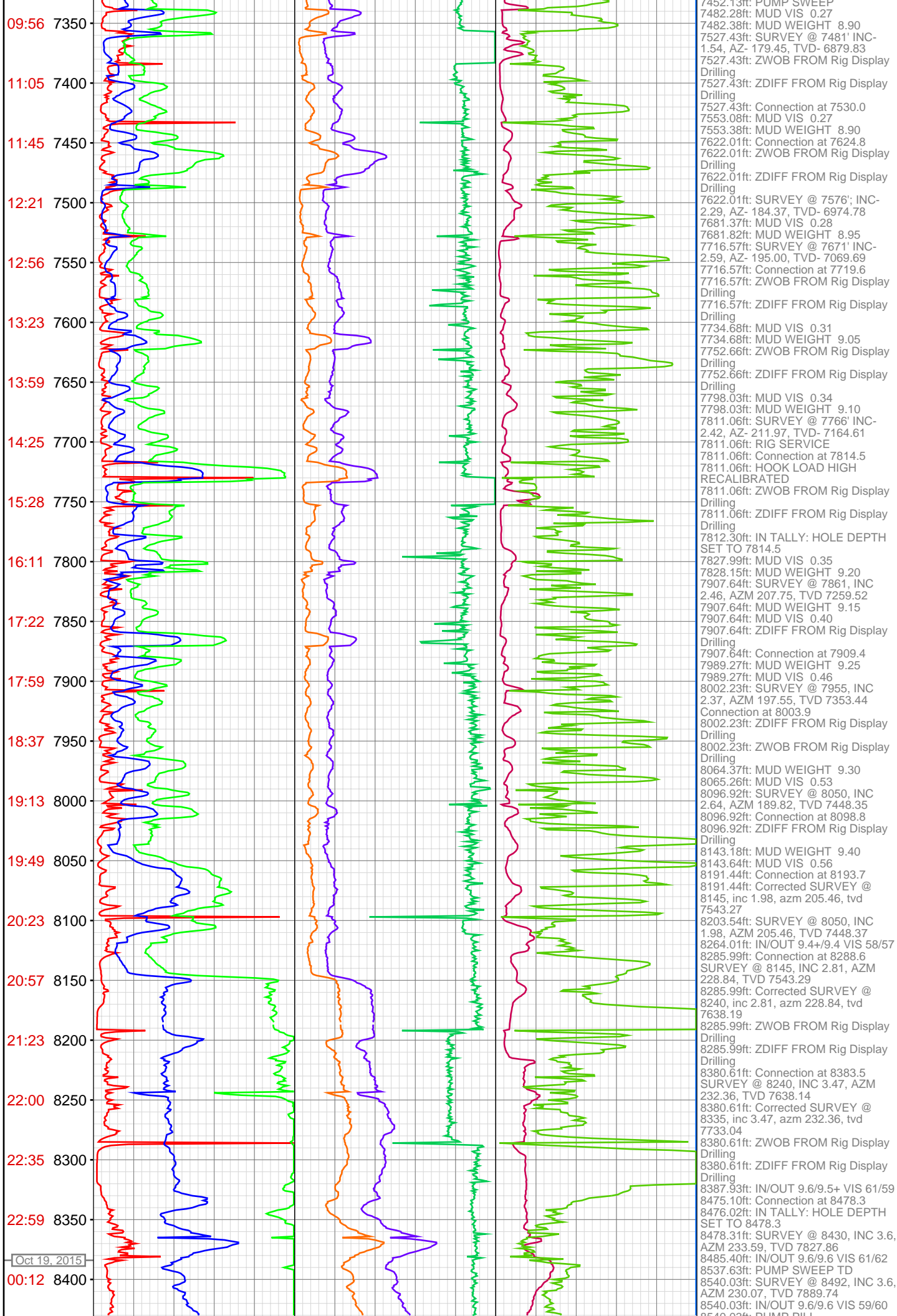














00:55 8450

01:50 8500

8550

8600



8540.03ft: PUMP PILL  
8540.03ft: FILL PIPE  
8540.03ft: DERRICKMAN 100% TIE  
OFF JW,RY,DM,JR  
8540.03ft: PUMP OUT CELLAR  
8540.03ft: MUD VIS 0.60  
8540.03ft: MUD WEIGHT 9.60  
8540.03ft: PUMP SWEEP  
8540.16ft: MUD VIS 0.60  
8540.16ft: MUD WEIGHT 9.65  
8540.16ft: PUMP PILL  
8540.16ft: 100% TIE OFF - JW, RY,  
DM, JR, AH  
8540.16ft: PULL ROTATING  
RUBBER  
8540.16ft: LAYDOWN MWD AND  
BHA  
8540.16ft: PULL WEAR BUSHING  
8540.16ft: SAFETY MTG. RIG UP  
CASING CREW  
8573.98ft: ATTEMPTED TO ZERO  
TOTAL STROKES ATTEMPTED TO  
SET HOLE DEPTH TO 0.00 FEET