



January 19, 2016

Mr. Paul Schwarz
Kerr-McGee Oil & Gas Onshore LP
1099 18th Street, Suite 1800
Denver, Colorado 80202

**RE: Colorado Oil & Gas Conservation Commission (COGCC)
Form 4 (Interim Reclamation Completion Notice)
Sparboe 27C-26HZ (Location: 430664)
Kerr-McGee Oil & Gas Onshore LP (Operator: 47120)**

Dear Mr. Schwarz:

Apex Companies, LLC (Apex) is pleased to present this letter to Kerr-McGee Oil and Gas Onshore LP (Kerr-McGee) documenting results of a vegetation assessment that demonstrates successful completion of interim reclamation efforts per COGCC Rule 1003 on the above referenced location in Weld County, Colorado. Attached is a topographic map, which identifies the referenced location.

Based on communications with Kerr-McGee personnel and subsequent site visits, Apex inspectors confirmed that the unused portions of the reduced production footprint have been stabilized and seeded with Anadarko Dryland Pasture/ Sandy Soil Mix. This seed mixture was applied at 20 pounds pure live seed (pls) per acre, and is composed of Tetraploid Perennial Ryegrass (9.84%), Smooth Brome, Lincoln (9.33%), Sandberg Bluegrass (7.5%), Intermediate Wheatgrass (7.5%), Sand Dropseed (7.5%), Indian Ricegrass (7.5%), Green Needlegrass (7.5%), Sideoats Grama (7.5%), Intermediate Wheatgrass, Oahe (7.38%), Dahurian Wildrye (7.22%), Orchardgrass, Paiute (7.145%), Pubescent Wheatgrass Luna (6.675%) and Switchgrass (5.00%).

On July 14, 2015, modified step-point vegetation surveys were conducted on the reclaimed portion of the well pad, and on adjacent reference areas. Foliar and basal cover, along with non-vegetated, and noxious weed occurrences were documented; 100 survey points were recorded within the reclaimed disturbance and 100 survey points were recorded within the reference area. Noxious weeds listed by the Colorado Department of Agriculture were excluded from the vegetative coverage calculation.

Survey results indicate the reclaimed area has a foliar vegetative cover that is 268.46% of the reference area. Vegetation survey results are provided in the attached survey summary tables and data sheets. Based on the results of the survey, interim reclamation as defined by COGCC Rule 1003.e (2) has been achieved. Photographs required by COGCC Rule 1003.e (3) are also attached along with a diagram illustrating vegetation survey efforts.

Apex appreciates the opportunity to provide environmental consulting services to Kerr-McGee with this project. Should you have any questions or require additional information, please don't hesitate to contact me.

Sincerely,
Apex Companies, LLC

A handwritten signature in black ink, appearing to read 'Chris Hines', written over a horizontal line.

Chris Hines
Project Manager
970-261-1127
chris.hines@apexcos.com

Attachments:

1. Vegetation Survey (Summary of Field Data)
2. Site Diagram
3. Topographic Location Map
4. Vegetation Survey (Photos)
5. Vegetation Survey (Field Data Tables)



Vegetation Survey (Summary of Field Data)

Client	Kerr-McGee Oil & Gas Onshore LP
COGCC Location Name (ID)	Sparboe 27C-26HZ (430664)
Assessment Date	7/14/2015
Inspector Name - Title	Tyler Dooley- Environmental Scientist
Data Processor Name - Title	Tyler Dooley- Environmental Scientist

Based on the survey methodology, the Foliar Cover % in each survey area is calculated by summing the total number of foliar occurrences, minus noxious weeds, and dividing by the total occurrences in the transect. For this location:

Reclaim Area (Foliar Cover)	Reference Area (Foliar Cover)
$(32 + 18 + 0) / 149 =$ 33.56%	$(12 + 6 + 0) / 144 =$ 12.50%

The Percent of Reference (%) used to evaluate each reclaim area for compliance with COGCC Rule 1003.e(2) for determining interim reclamation success, is calculated by dividing the Foliar Cover % in the Reclaim Area by the Foliar Cover % in the Reference Area. For this location:

Percent of Reference (Reclaim % / Reference %)
$33.56\% / 12.50\% =$ 268.46%

Reclaim Area Vegetation

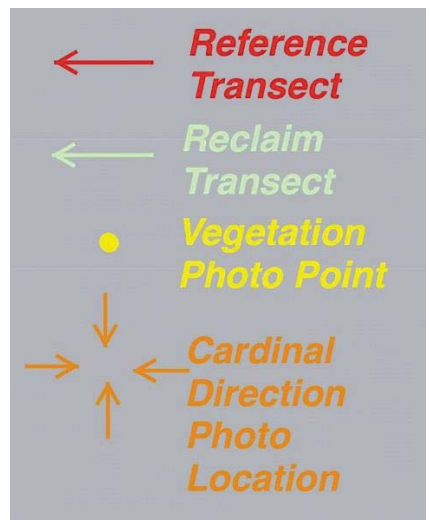
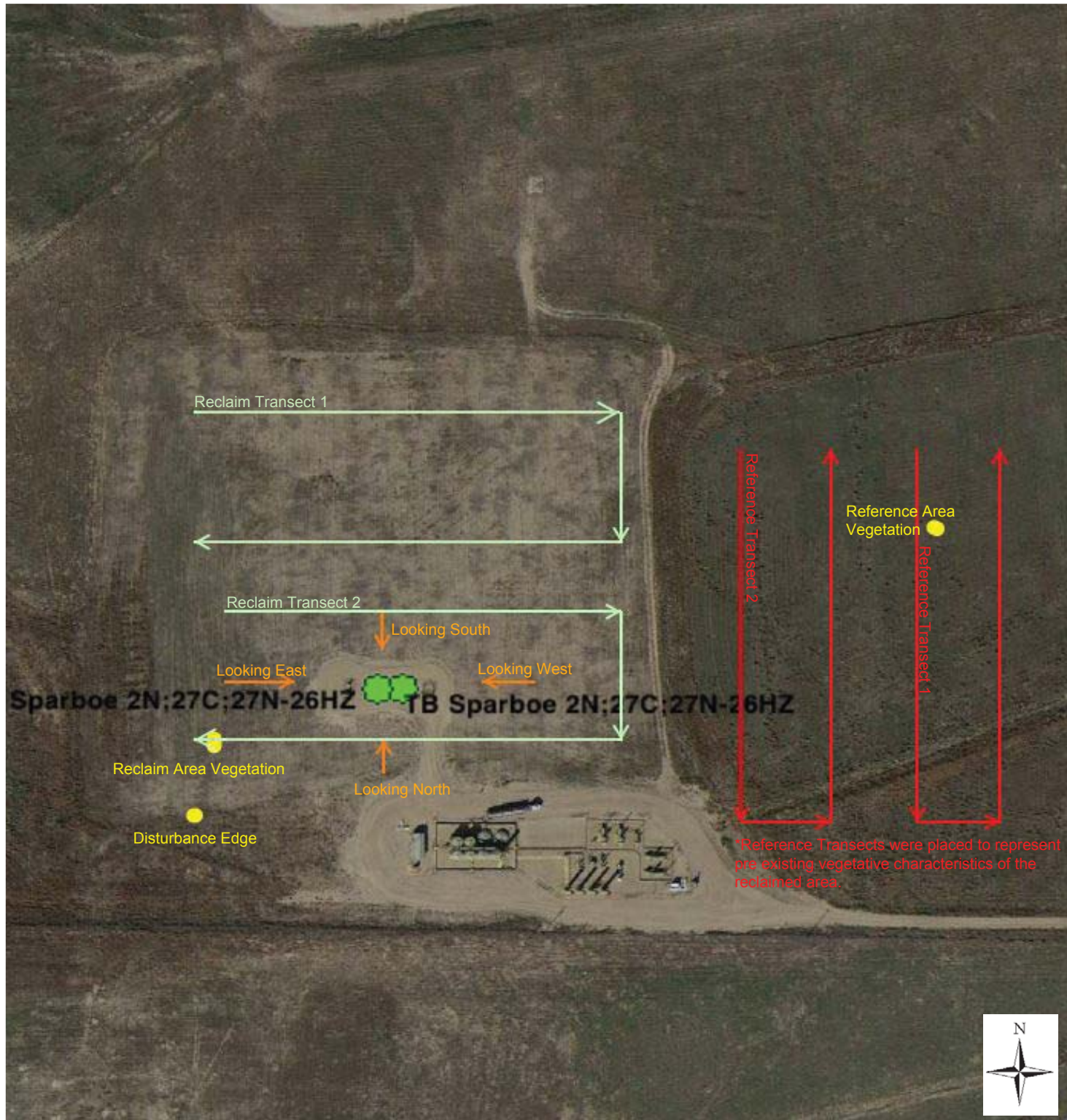
Foliar Cover	33.56%
Basal Cover	10.74%
Non Vegetated	55.70%
Noxious Weeds	0.00%
QA Total (must equal 100)	100.00%
Grass (Foliar)	32
Forb (Foliar)	18
Shrubs (Foliar)	0
Noxious Weed (Foliar)	0
Grass (Basal)	11
Forb (Basal)	5
Shrubs (Basal)	0
Noxious Weed (Basal)	0
Bare Ground	40
Litter	42
Rock	1
Total Occurrences	149

Reference Area Vegetation

Foliar Cover	12.50%
Basal Cover	5.56%
Non Vegetated	54.17%
Noxious Weeds	27.78%
QA Total (must equal 100)	100.00%
Grass (Foliar)	12
Forb (Foliar)	6
Shrubs (Foliar)	0
Noxious Weed (Foliar)	26
Grass (Basal)	8
Forb (Basal)	0
Shrubs (Basal)	0
Noxious Weed (Basal)	14
Bare Ground	0
Litter	78
Rock	0
Total Occurrences	144

Vegetation Survey Site Map

Sparboe 27C-26HZ
(430664)

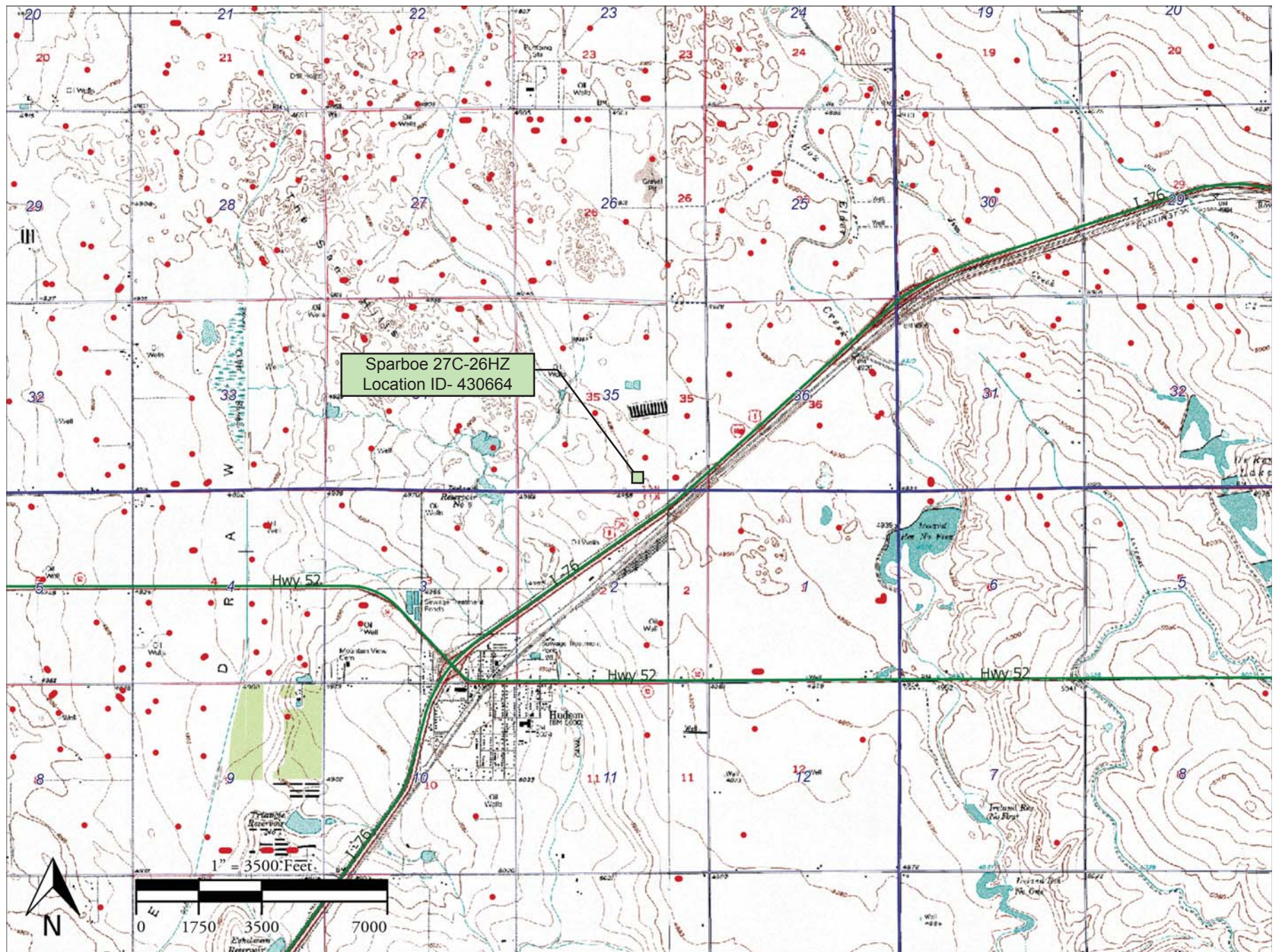


Legal Description: SWSE, Sec 35,
T2N-R65W
County: Weld

Land Use: Rangeland
Reference Area Cover: 12.50%
Reclamation Cover: 33.56%
Cover Ratio
(Reclaim/Reference): 268.46%

Inspector: Tyler Dooley
Assessment Date: July 14, 2015

Sparboe 27C-26HZ (430664) Topographic Location Map



Edge of Disturbance on South Side of Pad
Looking West
40.088035°/-104.629012°



Kerr McGee Oil & Gas Onshore LP
Form 4 (Interim Reclamation Completion Notice)
Sparboe 27C-26HZ (430664)

Vegetation Assessment
Completed - July 14, 2015



South of Disturbance
Looking North
40.088254°/-104.628338°



North of Disturbance
Looking South
40.088623°/-104.628349°



West of Disturbance
Looking East
40.088475°/-104.628719°



East of Disturbance
Looking West
40.088453°/-104.627905°



Reclaim Area Vegetation
40.088291°/-104.628974°



Reclaim Transect 1
Looking East
40.089379°/-104.629135°



Reclaim Transect 2
Looking East
40.088688°/-104.629069°

