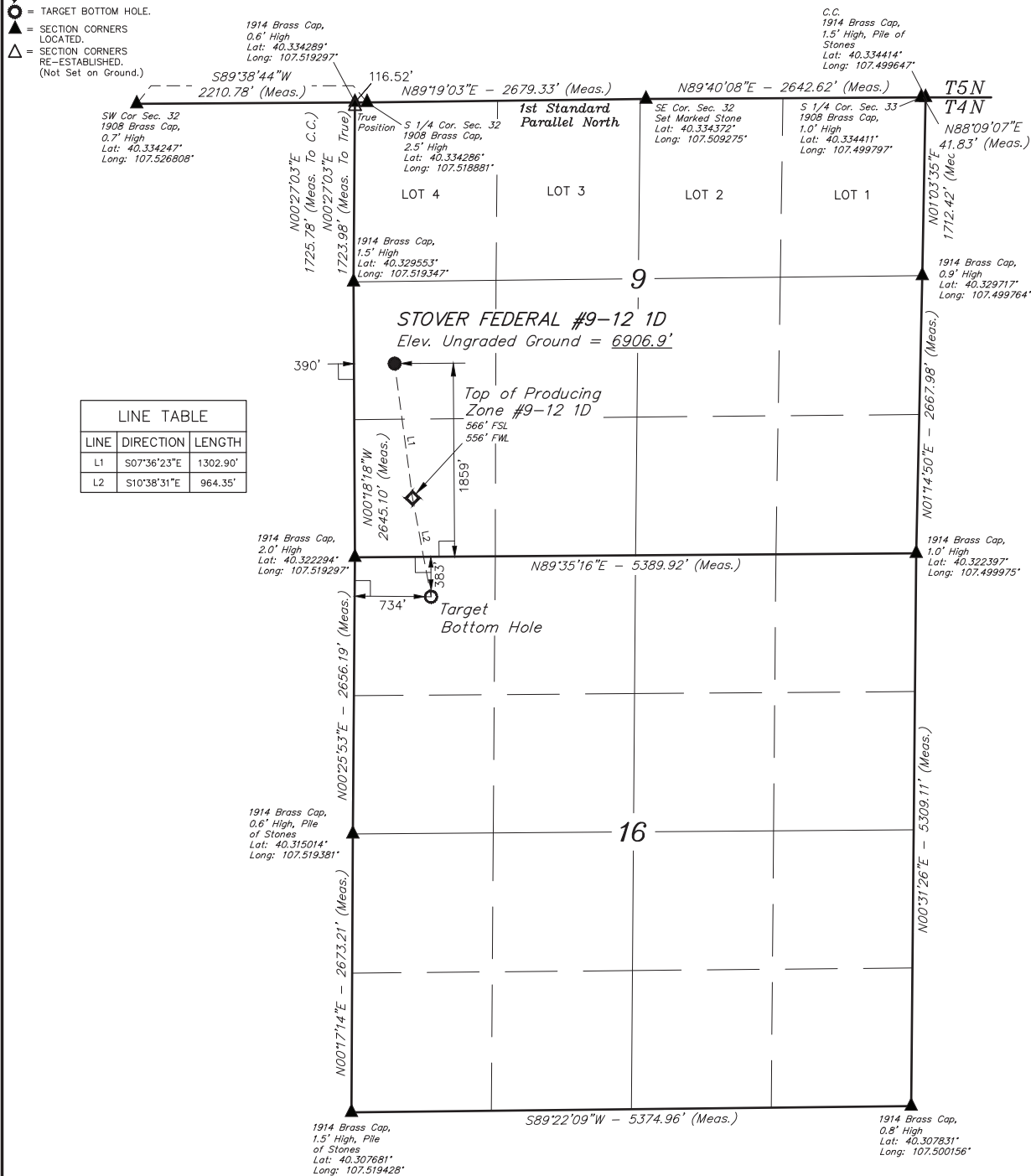


LEGEND:

- 90° SYMBOL
- PROPOSED WELLHEAD.
- LANDING POINT
- TARGET BOTTOM HOLE.
- SECTION CORNERS LOCATED.
- SECTION CORNERS RE-ESTABLISHED. (Not Set on Ground.)

T4N, R90W, 6th P.M.



| LINE TABLE | | |
|------------|--------------|----------|
| LINE | DIRECTION | LENGTH |
| L1 | S07°36'23\"E | 1302.90' |
| L2 | S10°38'31\"E | 964.35' |



| | | |
|---|--|---|
| NAD 83 (TARGET BOTTOM HOLE) LATITUDE = 40°19'16.53\" (40.321258) LONGITUDE = 107°31'00.04\" (107.516678) | NAD 83 (TOP OF PRODUCING ZONE) LATITUDE = 40°19'25.89\" (40.323858) LONGITUDE = 107°31'02.34\" (107.517317) | NAD 83 (SURFACE LOCATION) LATITUDE = 40°19'38.65\" (40.327403) LONGITUDE = 107°31'04.56\" (107.517933) |
| NAD 27 (TARGET BOTTOM HOLE) LATITUDE = 40°19'16.62\" (40.321283) LONGITUDE = 107°30'57.81\" (107.516058) | NAD 27 (TOP OF PRODUCING ZONE) LATITUDE = 40°19'25.98\" (40.323883) LONGITUDE = 107°31'00.11\" (107.516697) | NAD 27 (SURFACE LOCATION) LATITUDE = 40°19'38.74\" (40.327428) LONGITUDE = 107°31'02.33\" (107.517314) |
| STATE PLANE NAD 83 (CO. NORTH) N: 1366268.93 E: 2437730.50 | STATE PLANE NAD 83 (CO. NORTH) N: 1367220.21 E: 2437574.20 | STATE PLANE NAD 83 (CO. NORTH) N: 1368514.78 E: 2437431.38 |
| STATE PLANE NAD 27 (CO. NORTH) N: 366267.89 E: 1437888.13 | STATE PLANE NAD 27 (CO. NORTH) N: 367219.17 E: 1437731.83 | STATE PLANE NAD 27 (CO. NORTH) N: 368513.74 E: 1437589.01 |

CERTIFICATE OF SURVEY
THIS IS TO CERTIFY THAT THE ABOVE PLAT WAS PREPARED FROM FIELD NOTES OF ACTUAL SURVEYS MADE BY ME OR UNDER MY SUPERVISION AND THAT THE SAME ARE TRUE AND CORRECT TO THE BEST OF MY KNOWLEDGE AND BELIEF.

Handwritten signature: Harold M. Anderson

REGISTERED LAND SURVEYOR
REGISTRATION NO. 38130
STATE OF COLORADO 20-16

BASIS OF BEARINGS
BASIS OF BEARINGS IS A G.P.S. OBSERVATION

BASIS OF ELEVATION
SPOT ELEVATION AT THE NORTHEAST CORNER OF SECTION 31, T5N, R90W, 6th P.M. TAKEN FROM THE HAMILTON QUADRANGLE, COLORADO, MOFFAT COUNTY, 7.5 MINUTE QUAD (TOPOGRAPHIC MAP) PUBLISHED BY THE UNITED STATES DEPARTMENT OF THE INTERIOR, GEOLOGICAL SURVEY. SAID ELEVATION IS MARKED AS BEING 6664 FEET.



UELS, LLC
Corporate Office * 85 South 200 East
Vernal, UT 84078 * (435) 789-1017



GRMR OIL & GAS
STOVER FEDERAL #9-12 1D
NW 1/4 SW 1/4, SECTION 9, T4N, R90W, 6th P.M.
MOFFAT COUNTY, COLORADO

| | |
|----------------------------------|--------------------------|
| SURVEYED BY: MARTIN PIERCE, J.L. | DATE: 04-06-15 |
| DRAWN BY: T.B. | DATE DRAWN: 04-07-15 |
| SCALE: 1" = 1000' | REVISED: 01-19-16 M.O.E. |
| WELL LOCATION PLAT | |