

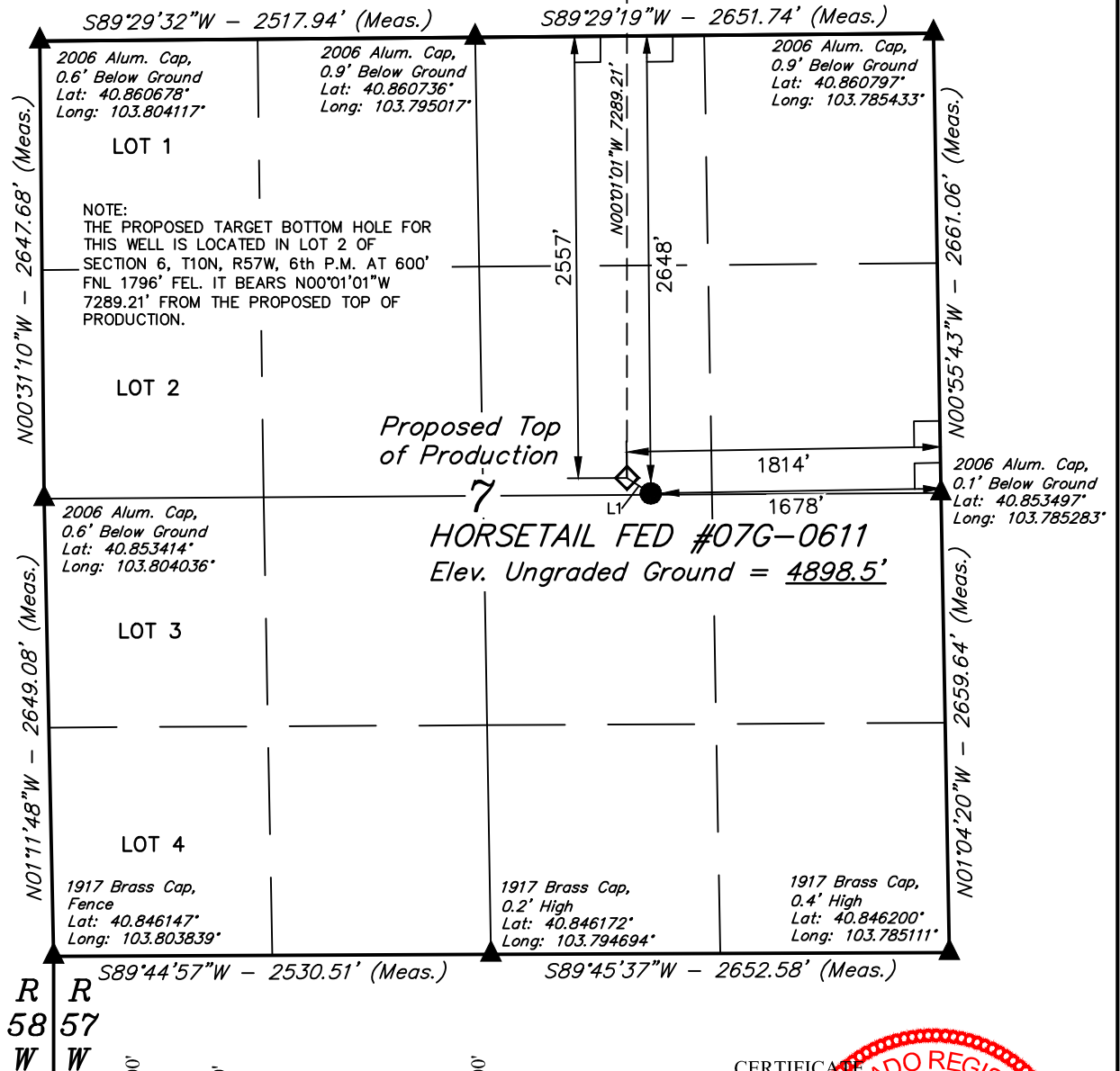
LEGEND:

- = 90° SYMBOL
- = PROPOSED WELLHEAD.
- = TARGET BOTTOM HOLE.
- = SECTION CORNERS LOCATED.
- = PROPOSED TOP OF PRODUCTION.

T10N, R57W, 6th P.M.

LINE TABLE		
LINE	DIRECTION	LENGTH
L1	N56°50'04"W	164.27'

Target
Bottom Hole



PDOP = 1.3

NAD 83 (SURFACE LOCATION)	NAD 83 (PROPOSED TOP OF PRODUCTION)
LATITUDE = 40°51'12.58" (40.853494)	LATITUDE = 40°51'13.47" (40.853742)
LONGITUDE = 103°47'28.85" (103.791347)	LONGITUDE = 103°47'30.64" (103.791844)
NAD 27 (SURFACE LOCATION)	NAD 27 (PROPOSED TOP OF PRODUCTION)
LATITUDE = 40°51'12.63" (40.853508)	LATITUDE = 40°51'13.52" (40.853756)
LONGITUDE = 103°47'27.05" (103.790847)	LONGITUDE = 103°47'28.84" (103.791344)

BASIS OF BEARINGS
BASIS OF BEARINGS IS A G.P.S. OBSERVATION
BASIS OF ELEVATION

SPOT ELEVATION LOCATED AT THE NORTHEAST CORNER OF SECTION 15, T9N, R58W, 6th P.M. TAKEN FROM THE GATEHOOK SPRING, QUADRANGLE, COLORADO, WELD COUNTY, 7.5 MINUTE QUAD (TOPOGRAPHIC MAP) PUBLISHED BY THE UNITED STATES DEPARTMENT OF THE INTERIOR, GEOLOGICAL SURVEY. SAID ELEVATION IS MARKED AS BEING 4679 FEET.



WHITING OIL & GAS CORP.

HORSETAIL FED #07G-0611 (SURFACE LOCATION)
SW 1/4 NE 1/4, SECTION 7, T10N, R57W, 6th P.M.
WELD COUNTY, COLORADO

SURVEYED BY: DALLAS NIELSEN, D.W.	DATE: 02-27-15
DRAWN BY: K.B.	DATE DRAWN: 08-11-14
SCALE: 1" = 1000'	REVISED: 02-11-16 T.B.

WELL LOCATION PLAT



UELS, LLC
Corporate Office * 85 South 200 East
Vernal, UT 84078 * (435) 789-1017

CERTIFICATE
THIS IS TO CERTIFY THAT THE ABOVE PLAT WAS PREPARED FROM FIELD NOTES OF ACTUAL SURVEYS MADE BY ME OR UNDER MY SUPERVISION AND THAT THE SAME ARE TRUE AND CORRECT TO THE BEST OF MY KNOWLEDGE AND BELIEF.

REGISTERED LAND SURVEYOR
REGISTRATION NO. 28285
STATE OF COLORADO
02-11-16

LEGEND:

└─ = 90° SYMBOL

○ = TARGET BOTTOM HOLE.

▲ = SECTION CORNERS LOCATED.

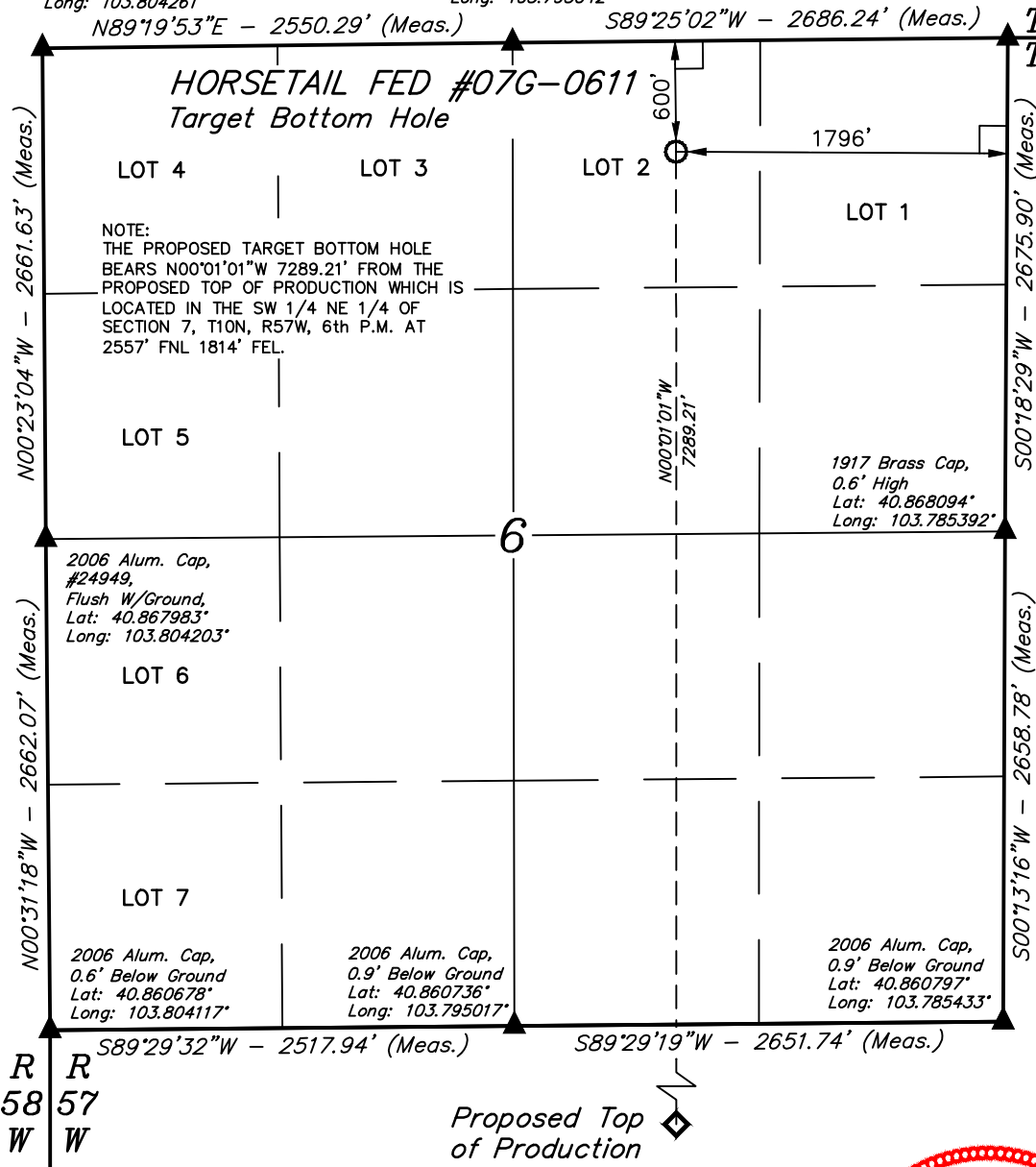
◊ = PROPOSED TOP OF PRODUCTION.

T10N, R57W, 6th P.M.

1917 Brass Cap,
0.5' High
Lat: 40.875286°
Long: 103.804261°

1917 Brass Cap,
0.3' High
Lat: 40.875367°
Long: 103.795042°

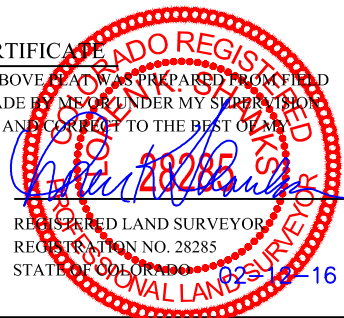
1917 Brass Cap,
0.4' High
Lat: 40.875436°
Long: 103.785333°



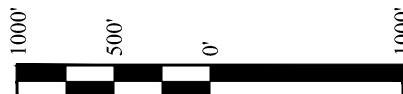
Proposed Top
of Production

CERTIFICATE

THIS IS TO CERTIFY THAT THE ABOVE MAP WAS PREPARED FROM FIELD NOTES OF ACTUAL SURVEYS MADE BY ME OR UNDER MY SUPERVISION AND THAT THE SAME ARE TRUE AND CORRECT TO THE BEST OF MY KNOWLEDGE AND BELIEF.



NAD 83 (TARGET BOTTOM HOLE)
LATITUDE = 40°52'25.47" (40.873742)
LONGITUDE = 103°47'30.62" (103.791839)
NAD 27 (TARGET BOTTOM HOLE)
LATITUDE = 40°52'25.53" (40.873758)
LONGITUDE = 103°47'28.81" (103.791336)



BASIS OF BEARINGS
BASIS OF BEARINGS IS A G.P.S. OBSERVATION
BASIS OF ELEVATION

SPOT ELEVATION LOCATED AT THE NORTHEAST CORNER OF SECTION 15, T9N, R58W, 6th P.M. TAKEN FROM THE GATEHOOK SPRING, QUADRANGLE, COLORADO, WELD COUNTY, 7.5 MINUTE QUAD (TOPOGRAPHIC MAP) PUBLISHED BY THE UNITED STATES DEPARTMENT OF THE INTERIOR, GEOLOGICAL SURVEY. SAID ELEVATION IS MARKED AS BEING 4679 FEET.

WHITING OIL & GAS CORP.

HORSETAIL FED #07G-0611 (TARGET BOTTOM HOLE)
LOT 2, SECTION 6, T10N, R57W, 6th P.M.
WELD COUNTY, COLORADO

SURVEYED BY: DALLAS NIELSEN, D.W.	DATE: 02-27-15
DRAWN BY: K.B.	DATE DRAWN: 08-11-14
SCALE: 1" = 1000'	REVISED: 02-11-16 T.B.

WELL LOCATION PLAT



UELS, LLC
Corporate Office * 85 South 200 East
Vernal, UT 84078 * (435) 789-1017

