



Project: Weld County, CO
Site: Sec 7-T10N-R57W
Well: Horsetail Fed #07G-0611
Wellbore: Hz
Design: Design #1

PROJECT DETAILS: Weld County, CO
Geodetic System: US State Plane 1983
Datum: North American Datum 1983
Ellipsoid: GRS 1980
Zone: Colorado Northern Zone
System Datum: Mean Sea Level



Azimuths to True North
Magnetic North: 7.88°
Magnetic Field
Strength: 53087.8nT
Dip Angle: 67.44°
Date: 1/6/2015
Model: IGRF2010

WELL DETAILS: Horsetail Fed #07G-0611

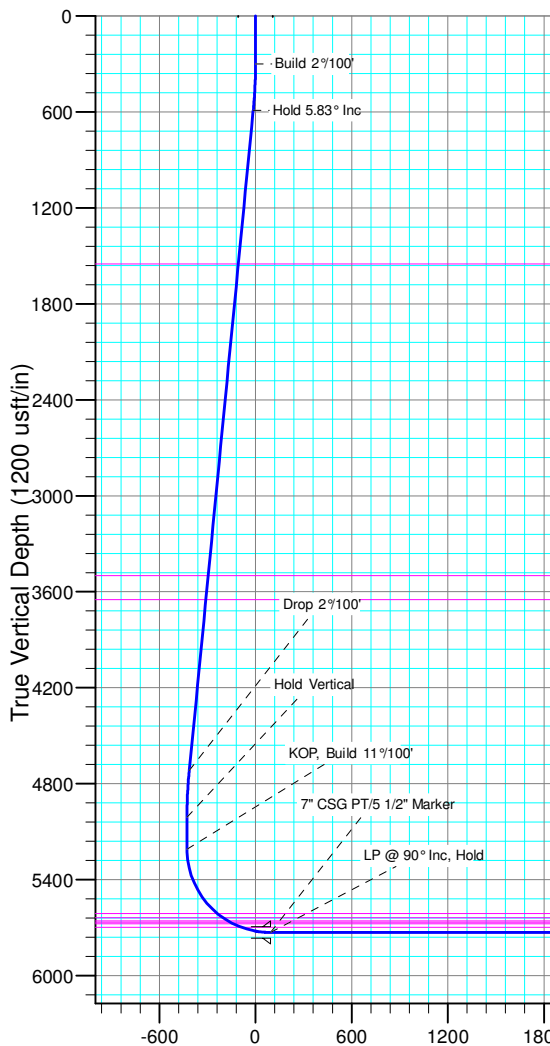
+N/-S		+E/-W		Northing	Ground Level:	Easting	Latitude	Longitude	Slot
0.00		0.00		1558330.89	4895.00	3472664.73	40° 51' 12.580 N	103° 47' 28.850 W	

SECTION DETAILS

Sec	MD	Inc	Azi	TVD	+N/-S	+E/-W	Dleg	TFace	VSec	Target
1	0.00	0.00	0.00	0.00	0.00	0.00	0.00	0.00	0.00	
2	300.00	0.00	0.00	300.00	0.00	0.00	0.00	0.00	0.00	
3	591.40	5.83	197.55	590.90	-14.12	-4.46	2.00	197.55	-14.03	
4	4741.05	5.83	197.55	4719.10	-415.88	-131.52	0.00	0.00	-413.39	
5	5032.45	0.00	0.00	5010.00	-430.00	-135.98	2.00	180.00	-427.42	
6	5232.45	0.00	0.00	5210.00	-430.00	-135.98	0.00	0.00	-427.42	
7	6050.84	90.00	0.00	5731.00	91.00	-135.98	11.00	0.00	93.49	
8	13336.84	90.00	0.00	5731.00	7377.00	-135.98	0.00	0.00	7378.26	PBHL 0611

FORMATION TOP DETAILS

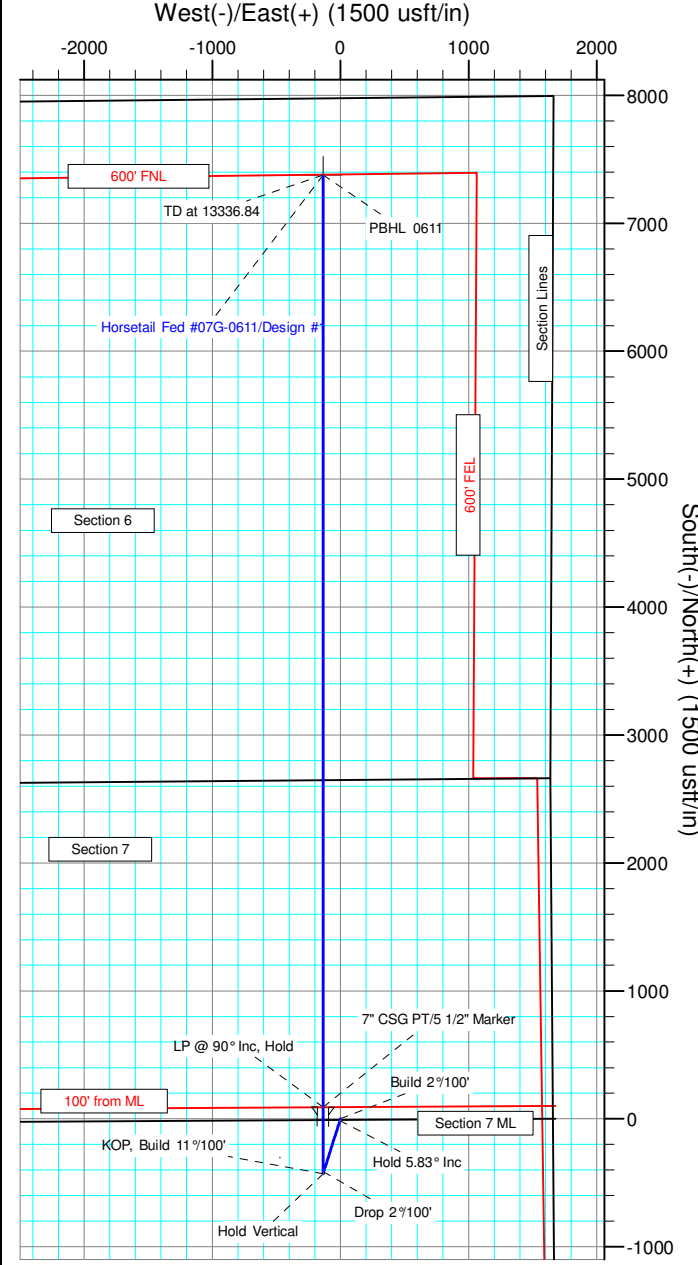
TVDPath	MDPath	Formation
1550.00	1555.49	Upper Pierre
3500.00	3515.62	Hygiene
3650.00	3666.40	Lower Pierre
5612.00	5691.63	P200 Marker
5639.00	5736.47	P300 Marker
5658.00	5771.71	P350 Marker
5667.00	5789.88	Sharon Springs
5676.00	5809.29	Niobrara
5699.00	5867.29	Top A Chalk



ANNOTATIONS									
TVD	MD	Inc	Azi	+N/-S	+E/-W	VSec	Departure	Annotation	
300.00	300.00	0.00	0.00	0.00	0.00	0.00	0.00	Build 2°/100'	
590.90	591.40	5.83	197.55	-14.12	-4.46	-14.03	14.81	Hold 5.83° Inc	
4719.10	4741.05	5.83	197.55	-415.88	-131.52	-413.39	436.18	Drop 2°/100'	
5010.00	5032.45	0.00	0.00	-430.00	-135.98	-427.42	450.99	Hold Vertical	
5210.00	5232.45	0.00	0.00	-430.00	-135.98	-427.42	450.99	KOP, Build 11°/100'	
5731.00	6050.84	90.00	0.00	91.00	-135.98	93.49	971.99	LP @ 90° Inc, Hold	
5731.00	13336.84	90.00	0.00	7377.00	-135.98	7378.26	8257.99	TD at 13336.84	

DESIGN TARGET DETAILS							
Name	TVD	+N/-S	+E/-W	Northing	Easting	Latitude	Longitude
PBHL 0611	5731.00	7377.00	-135.98	1565703.90	3472386.64	40° 52' 25.470 N	103° 47' 30.620 W

SHL:
2648' FNL, 1678' FEL
Sec7-T10N-R57W
BHL:
600' FNL, 1796' FEL
Sec6-T10N-R57W
7" CSG PT/5 1/2" Marker:
2557' FNL, 1814' FEL
Sec7-T10N-R57W





Whiting Petroleum Corp.

Weld County, CO

Sec 7-T10N-R57W

Horsetail Fed #07G-0611

Hz

Plan: Design #1

Standard Planning Report

18 November, 2015



WOG

Planning Report

Database:	LandmarkEDM	Local Co-ordinate Reference:	Well Horsetail Fed #07G-0611
Company:	Whiting Petroleum Corp.	TVD Reference:	KBE @ 4916.00usft
Project:	Weld County, CO	MD Reference:	KBE @ 4916.00usft
Site:	Sec 7-T10N-R57W	North Reference:	True
Well:	Horsetail Fed #07G-0611	Survey Calculation Method:	Minimum Curvature
Wellbore:	Hz		
Design:	Design #1		

Project	Weld County, CO		
Map System:	US State Plane 1983	System Datum:	Mean Sea Level
Geo Datum:	North American Datum 1983		
Map Zone:	Colorado Northern Zone		

Site		Sec 7-T10N-R57W			
Site Position:		Northing:	1,558,450.14 usft	Latitude:	40° 51' 14.300 N
From:	Lat/Long	Easting:	3,469,810.15 usft	Longitude:	103° 48' 5.960 W
Position Uncertainty:	0.00 usft	Slot Radius:	13.200 in	Grid Convergence:	1.10 °

Well	Horsetail Fed #07G-0611					
Well Position	+N/-S	-173.89 usft	Northing:	1,558,330.90 usft	Latitude:	40° 51' 12.580 N
	+E/-W	2,851.77 usft	Easting:	3,472,664.73 usft	Longitude:	103° 47' 28.850 W
Position Uncertainty		0.00 usft	Wellhead Elevation:		Ground Level:	4,895.00 usft

Wellbore	Hz				
Magnetics	Model Name	Sample Date	Declination (°)	Dip Angle (°)	Field Strength (nT)
	IGRF2010	1/6/2015	7.88	67.44	53,088

Design	Design #1			
Audit Notes:				
Version:	Phase:	PROTOTYPE	Tie On Depth:	0.00
Vertical Section:	Depth From (TVD) (usft)	+N/-S (usft)	+E/-W (usft)	Direction (°)
	0.00	0.00	0.00	358.94

Plan Sections										
Measured Depth (usft)	Inclination (°)	Azimuth (°)	Vertical Depth (usft)	+N/-S (usft)	+E/-W (usft)	Dogleg Rate (°/100ft)	Build Rate (°/100ft)	Turn Rate (°/100ft)	TFO (°)	Target
0.00	0.00	0.00	0.00	0.00	0.00	0.00	0.00	0.00	0.00	
300.00	0.00	0.00	300.00	0.00	0.00	0.00	0.00	0.00	0.00	
591.40	5.83	197.55	590.90	-14.12	-4.46	2.00	2.00	0.00	197.55	
4,741.05	5.83	197.55	4,719.10	-415.88	-131.52	0.00	0.00	0.00	0.00	
5,032.45	0.00	0.00	5,010.00	-430.00	-135.98	2.00	-2.00	0.00	180.00	
5,232.45	0.00	0.00	5,210.00	-430.00	-135.98	0.00	0.00	0.00	0.00	
6,050.84	90.00	0.00	5,731.00	91.00	-135.98	11.00	11.00	0.00	0.00	
13,336.84	90.00	0.00	5,731.00	7,377.00	-135.98	0.00	0.00	0.00	0.00	PBHL 0611A



WOG

Planning Report

Database:	LandmarkEDM	Local Co-ordinate Reference:	Well Horsetail Fed #07G-0611
Company:	Whiting Petroleum Corp.	TVD Reference:	KBE @ 4916.00usft
Project:	Weld County, CO	MD Reference:	KBE @ 4916.00usft
Site:	Sec 7-T10N-R57W	North Reference:	True
Well:	Horsetail Fed #07G-0611	Survey Calculation Method:	Minimum Curvature
Wellbore:	Hz		
Design:	Design #1		

Planned Survey									
Measured Depth (usft)	Inclination (°)	Azimuth (°)	Vertical Depth (usft)	+N/-S (usft)	+E/-W (usft)	Vertical Section (usft)	Dogleg Rate (°/100ft)	Build Rate (°/100ft)	Turn Rate (°/100ft)
0.00	0.00	0.00	0.00	0.00	0.00	0.00	0.00	0.00	0.00
100.00	0.00	0.00	100.00	0.00	0.00	0.00	0.00	0.00	0.00
200.00	0.00	0.00	200.00	0.00	0.00	0.00	0.00	0.00	0.00
300.00	0.00	0.00	300.00	0.00	0.00	0.00	0.00	0.00	0.00
Build 2°/100'									
400.00	2.00	197.55	399.98	-1.66	-0.53	-1.65	2.00	2.00	0.00
500.00	4.00	197.55	499.84	-6.65	-2.10	-6.61	2.00	2.00	0.00
591.40	5.83	197.55	590.90	-14.12	-4.46	-14.03	2.00	2.00	0.00
Hold 5.83° Inc									
600.00	5.83	197.55	599.45	-14.95	-4.73	-14.86	0.00	0.00	0.00
700.00	5.83	197.55	698.94	-24.63	-7.79	-24.49	0.00	0.00	0.00
800.00	5.83	197.55	798.42	-34.31	-10.85	-34.11	0.00	0.00	0.00
900.00	5.83	197.55	897.90	-44.00	-13.91	-43.73	0.00	0.00	0.00
1,000.00	5.83	197.55	997.39	-53.68	-16.97	-53.36	0.00	0.00	0.00
1,100.00	5.83	197.55	1,096.87	-63.36	-20.04	-62.98	0.00	0.00	0.00
1,200.00	5.83	197.55	1,196.35	-73.04	-23.10	-72.60	0.00	0.00	0.00
1,300.00	5.83	197.55	1,295.84	-82.72	-26.16	-82.23	0.00	0.00	0.00
1,400.00	5.83	197.55	1,395.32	-92.41	-29.22	-91.85	0.00	0.00	0.00
1,500.00	5.83	197.55	1,494.80	-102.09	-32.28	-101.48	0.00	0.00	0.00
1,555.49	5.83	197.55	1,550.00	-107.46	-33.98	-106.82	0.00	0.00	0.00
Upper Pierre									
1,600.00	5.83	197.55	1,594.28	-111.77	-35.35	-111.10	0.00	0.00	0.00
1,700.00	5.83	197.55	1,693.77	-121.45	-38.41	-120.72	0.00	0.00	0.00
1,800.00	5.83	197.55	1,793.25	-131.13	-41.47	-130.35	0.00	0.00	0.00
1,900.00	5.83	197.55	1,892.73	-140.82	-44.53	-139.97	0.00	0.00	0.00
2,000.00	5.83	197.55	1,992.22	-150.50	-47.59	-149.59	0.00	0.00	0.00
2,100.00	5.83	197.55	2,091.70	-160.18	-50.65	-159.22	0.00	0.00	0.00
2,200.00	5.83	197.55	2,191.18	-169.86	-53.72	-168.84	0.00	0.00	0.00
2,300.00	5.83	197.55	2,290.67	-179.54	-56.78	-178.47	0.00	0.00	0.00
2,400.00	5.83	197.55	2,390.15	-189.22	-59.84	-188.09	0.00	0.00	0.00
2,500.00	5.83	197.55	2,489.63	-198.91	-62.90	-197.71	0.00	0.00	0.00
2,600.00	5.83	197.55	2,589.12	-208.59	-65.96	-207.34	0.00	0.00	0.00
2,700.00	5.83	197.55	2,688.60	-218.27	-69.02	-216.96	0.00	0.00	0.00
2,800.00	5.83	197.55	2,788.08	-227.95	-72.09	-226.58	0.00	0.00	0.00
2,900.00	5.83	197.55	2,887.56	-237.63	-75.15	-236.21	0.00	0.00	0.00
3,000.00	5.83	197.55	2,987.05	-247.32	-78.21	-245.83	0.00	0.00	0.00
3,100.00	5.83	197.55	3,086.53	-257.00	-81.27	-255.46	0.00	0.00	0.00
3,200.00	5.83	197.55	3,186.01	-266.68	-84.33	-265.08	0.00	0.00	0.00
3,300.00	5.83	197.55	3,285.50	-276.36	-87.39	-274.70	0.00	0.00	0.00
3,400.00	5.83	197.55	3,384.98	-286.04	-90.46	-284.33	0.00	0.00	0.00
3,500.00	5.83	197.55	3,484.46	-295.72	-93.52	-293.95	0.00	0.00	0.00
3,515.62	5.83	197.55	3,500.00	-297.24	-94.00	-295.45	0.00	0.00	0.00
Hygiene									
3,600.00	5.83	197.55	3,583.95	-305.41	-96.58	-303.57	0.00	0.00	0.00
3,666.40	5.83	197.55	3,650.00	-311.83	-98.61	-309.96	0.00	0.00	0.00
Lower Pierre									
3,700.00	5.83	197.55	3,683.43	-315.09	-99.64	-313.20	0.00	0.00	0.00
3,800.00	5.83	197.55	3,782.91	-324.77	-102.70	-322.82	0.00	0.00	0.00
3,900.00	5.83	197.55	3,882.40	-334.45	-105.76	-332.45	0.00	0.00	0.00
4,000.00	5.83	197.55	3,981.88	-344.13	-108.83	-342.07	0.00	0.00	0.00
4,100.00	5.83	197.55	4,081.36	-353.82	-111.89	-351.69	0.00	0.00	0.00
4,200.00	5.83	197.55	4,180.85	-363.50	-114.95	-361.32	0.00	0.00	0.00
4,300.00	5.83	197.55	4,280.33	-373.18	-118.01	-370.94	0.00	0.00	0.00
4,400.00	5.83	197.55	4,379.81	-382.86	-121.07	-380.56	0.00	0.00	0.00



WOG

Planning Report

Database:	LandmarkEDM	Local Co-ordinate Reference:	Well Horsetail Fed #07G-0611
Company:	Whiting Petroleum Corp.	TVD Reference:	KBE @ 4916.00usft
Project:	Weld County, CO	MD Reference:	KBE @ 4916.00usft
Site:	Sec 7-T10N-R57W	North Reference:	True
Well:	Horsetail Fed #07G-0611	Survey Calculation Method:	Minimum Curvature
Wellbore:	Hz		
Design:	Design #1		

Planned Survey									
Measured Depth (usft)	Inclination (°)	Azimuth (°)	Vertical Depth (usft)	+N/-S (usft)	+E/-W (usft)	Vertical Section (usft)	Dogleg Rate (°/100ft)	Build Rate (°/100ft)	Turn Rate (°/100ft)
4,500.00	5.83	197.55	4,479.29	-392.54	-124.13	-390.19	0.00	0.00	0.00
4,600.00	5.83	197.55	4,578.78	-402.22	-127.20	-399.81	0.00	0.00	0.00
4,700.00	5.83	197.55	4,678.26	-411.91	-130.26	-409.44	0.00	0.00	0.00
4,741.05	5.83	197.55	4,719.10	-415.88	-131.52	-413.39	0.00	0.00	0.00
Drop 2°/100'									
4,800.00	4.65	197.55	4,777.80	-421.01	-133.14	-418.49	2.00	-2.00	0.00
4,900.00	2.65	197.55	4,877.59	-427.08	-135.06	-424.52	2.00	-2.00	0.00
5,000.00	0.65	197.55	4,977.55	-429.82	-135.92	-427.25	2.00	-2.00	0.00
5,032.45	0.00	0.00	5,010.00	-430.00	-135.98	-427.42	2.00	-2.00	0.00
Hold Vertical									
5,100.00	0.00	0.00	5,077.55	-430.00	-135.98	-427.42	0.00	0.00	0.00
5,200.00	0.00	0.00	5,177.55	-430.00	-135.98	-427.42	0.00	0.00	0.00
5,232.45	0.00	0.00	5,210.00	-430.00	-135.98	-427.42	0.00	0.00	0.00
KOP, Build 11°/100'									
5,250.00	1.93	0.00	5,227.54	-429.70	-135.98	-427.13	11.00	11.00	0.00
5,300.00	7.43	0.00	5,277.36	-425.63	-135.98	-423.05	11.00	11.00	0.00
5,350.00	12.93	0.00	5,326.55	-416.80	-135.98	-414.22	11.00	11.00	0.00
5,400.00	18.43	0.00	5,374.67	-403.29	-135.98	-400.72	11.00	11.00	0.00
5,450.00	23.92	0.00	5,421.28	-385.24	-135.98	-382.67	11.00	11.00	0.00
5,500.00	29.42	0.00	5,465.94	-362.80	-135.98	-360.23	11.00	11.00	0.00
5,550.00	34.92	0.00	5,508.25	-336.19	-135.98	-333.62	11.00	11.00	0.00
5,600.00	40.42	0.00	5,547.81	-305.64	-135.98	-303.09	11.00	11.00	0.00
5,650.00	45.92	0.00	5,584.26	-271.45	-135.98	-268.90	11.00	11.00	0.00
5,691.63	50.50	0.00	5,612.00	-240.42	-135.98	-237.87	11.00	11.00	0.00
P200 Marker									
5,700.00	51.42	0.00	5,617.27	-233.92	-135.98	-231.37	11.00	11.00	0.00
5,736.47	55.43	0.00	5,639.00	-204.63	-135.98	-202.09	11.00	11.00	0.00
P300 Marker									
5,750.00	56.92	0.00	5,646.53	-193.40	-135.98	-190.86	11.00	11.00	0.00
5,771.71	59.30	0.00	5,658.00	-174.96	-135.98	-172.43	11.00	11.00	0.00
P350 Marker									
5,789.88	61.30	0.00	5,667.00	-159.18	-135.98	-156.65	11.00	11.00	0.00
Sharon Springs									
5,800.00	62.41	0.00	5,671.77	-150.26	-135.98	-147.73	11.00	11.00	0.00
5,809.29	63.44	0.00	5,676.00	-141.99	-135.98	-139.46	11.00	11.00	0.00
Niobrara									
5,850.00	67.91	0.00	5,692.77	-104.90	-135.98	-102.38	11.00	11.00	0.00
5,867.29	69.81	0.00	5,699.00	-88.78	-135.98	-86.26	11.00	11.00	0.00
Top A Chalk									
5,900.00	73.41	0.00	5,709.32	-57.74	-135.98	-55.22	11.00	11.00	0.00
5,950.00	78.91	0.00	5,721.27	-9.21	-135.98	-6.70	11.00	11.00	0.00
6,000.00	84.41	0.00	5,728.52	40.24	-135.98	42.74	11.00	11.00	0.00
6,050.84	90.00	0.00	5,731.00	91.00	-135.98	93.49	11.00	11.00	0.00
LP @ 90° Inc, Hold - 7" CSG PT/5 1/2" Marker									
6,100.00	90.00	0.00	5,731.00	140.16	-135.98	142.64	0.00	0.00	0.00
6,200.00	90.00	0.00	5,731.00	240.16	-135.98	242.63	0.00	0.00	0.00
6,300.00	90.00	0.00	5,731.00	340.16	-135.98	342.61	0.00	0.00	0.00
6,400.00	90.00	0.00	5,731.00	440.16	-135.98	442.59	0.00	0.00	0.00
6,500.00	90.00	0.00	5,731.00	540.16	-135.98	542.58	0.00	0.00	0.00
6,600.00	90.00	0.00	5,731.00	640.16	-135.98	642.56	0.00	0.00	0.00
6,700.00	90.00	0.00	5,731.00	740.16	-135.98	742.54	0.00	0.00	0.00
6,800.00	90.00	0.00	5,731.00	840.16	-135.98	842.52	0.00	0.00	0.00



WOG

Planning Report

Database:	LandmarkEDM	Local Co-ordinate Reference:	Well Horsetail Fed #07G-0611
Company:	Whiting Petroleum Corp.	TVD Reference:	KBE @ 4916.00usft
Project:	Weld County, CO	MD Reference:	KBE @ 4916.00usft
Site:	Sec 7-T10N-R57W	North Reference:	True
Well:	Horsetail Fed #07G-0611	Survey Calculation Method:	Minimum Curvature
Wellbore:	H2		
Design:	Design #1		

Planned Survey									
Measured Depth (usft)	Inclination (°)	Azimuth (°)	Vertical Depth (usft)	+N/-S (usft)	+E/-W (usft)	Vertical Section (usft)	Dogleg Rate (°/100ft)	Build Rate (°/100ft)	Turn Rate (°/100ft)
6,900.00	90.00	0.00	5,731.00	940.16	-135.98	942.51	0.00	0.00	0.00
7,000.00	90.00	0.00	5,731.00	1,040.16	-135.98	1,042.49	0.00	0.00	0.00
7,100.00	90.00	0.00	5,731.00	1,140.16	-135.98	1,142.47	0.00	0.00	0.00
7,200.00	90.00	0.00	5,731.00	1,240.16	-135.98	1,242.46	0.00	0.00	0.00
7,300.00	90.00	0.00	5,731.00	1,340.16	-135.98	1,342.44	0.00	0.00	0.00
7,400.00	90.00	0.00	5,731.00	1,440.16	-135.98	1,442.42	0.00	0.00	0.00
7,500.00	90.00	0.00	5,731.00	1,540.16	-135.98	1,542.41	0.00	0.00	0.00
7,600.00	90.00	0.00	5,731.00	1,640.16	-135.98	1,642.39	0.00	0.00	0.00
7,700.00	90.00	0.00	5,731.00	1,740.16	-135.98	1,742.37	0.00	0.00	0.00
7,800.00	90.00	0.00	5,731.00	1,840.16	-135.98	1,842.35	0.00	0.00	0.00
7,900.00	90.00	0.00	5,731.00	1,940.16	-135.98	1,942.34	0.00	0.00	0.00
8,000.00	90.00	0.00	5,731.00	2,040.16	-135.98	2,042.32	0.00	0.00	0.00
8,100.00	90.00	0.00	5,731.00	2,140.16	-135.98	2,142.30	0.00	0.00	0.00
8,200.00	90.00	0.00	5,731.00	2,240.16	-135.98	2,242.29	0.00	0.00	0.00
8,300.00	90.00	0.00	5,731.00	2,340.16	-135.98	2,342.27	0.00	0.00	0.00
8,400.00	90.00	0.00	5,731.00	2,440.16	-135.98	2,442.25	0.00	0.00	0.00
8,500.00	90.00	0.00	5,731.00	2,540.16	-135.98	2,542.24	0.00	0.00	0.00
8,600.00	90.00	0.00	5,731.00	2,640.16	-135.98	2,642.22	0.00	0.00	0.00
8,700.00	90.00	0.00	5,731.00	2,740.16	-135.98	2,742.20	0.00	0.00	0.00
8,800.00	90.00	0.00	5,731.00	2,840.16	-135.98	2,842.18	0.00	0.00	0.00
8,900.00	90.00	0.00	5,731.00	2,940.16	-135.98	2,942.17	0.00	0.00	0.00
9,000.00	90.00	0.00	5,731.00	3,040.16	-135.98	3,042.15	0.00	0.00	0.00
9,100.00	90.00	0.00	5,731.00	3,140.16	-135.98	3,142.13	0.00	0.00	0.00
9,200.00	90.00	0.00	5,731.00	3,240.16	-135.98	3,242.12	0.00	0.00	0.00
9,300.00	90.00	0.00	5,731.00	3,340.16	-135.98	3,342.10	0.00	0.00	0.00
9,400.00	90.00	0.00	5,731.00	3,440.16	-135.98	3,442.08	0.00	0.00	0.00
9,500.00	90.00	0.00	5,731.00	3,540.16	-135.98	3,542.07	0.00	0.00	0.00
9,600.00	90.00	0.00	5,731.00	3,640.16	-135.98	3,642.05	0.00	0.00	0.00
9,700.00	90.00	0.00	5,731.00	3,740.16	-135.98	3,742.03	0.00	0.00	0.00
9,800.00	90.00	0.00	5,731.00	3,840.16	-135.98	3,842.02	0.00	0.00	0.00
9,900.00	90.00	0.00	5,731.00	3,940.16	-135.98	3,942.00	0.00	0.00	0.00
10,000.00	90.00	0.00	5,731.00	4,040.16	-135.98	4,041.98	0.00	0.00	0.00
10,100.00	90.00	0.00	5,731.00	4,140.16	-135.98	4,141.96	0.00	0.00	0.00
10,200.00	90.00	0.00	5,731.00	4,240.16	-135.98	4,241.95	0.00	0.00	0.00
10,300.00	90.00	0.00	5,731.00	4,340.16	-135.98	4,341.93	0.00	0.00	0.00
10,400.00	90.00	0.00	5,731.00	4,440.16	-135.98	4,441.91	0.00	0.00	0.00
10,500.00	90.00	0.00	5,731.00	4,540.16	-135.98	4,541.90	0.00	0.00	0.00
10,600.00	90.00	0.00	5,731.00	4,640.16	-135.98	4,641.88	0.00	0.00	0.00
10,700.00	90.00	0.00	5,731.00	4,740.16	-135.98	4,741.86	0.00	0.00	0.00
10,800.00	90.00	0.00	5,731.00	4,840.16	-135.98	4,841.85	0.00	0.00	0.00
10,900.00	90.00	0.00	5,731.00	4,940.16	-135.98	4,941.83	0.00	0.00	0.00
11,000.00	90.00	0.00	5,731.00	5,040.16	-135.98	5,041.81	0.00	0.00	0.00
11,100.00	90.00	0.00	5,731.00	5,140.16	-135.98	5,141.79	0.00	0.00	0.00
11,200.00	90.00	0.00	5,731.00	5,240.16	-135.98	5,241.78	0.00	0.00	0.00
11,300.00	90.00	0.00	5,731.00	5,340.16	-135.98	5,341.76	0.00	0.00	0.00
11,400.00	90.00	0.00	5,731.00	5,440.16	-135.98	5,441.74	0.00	0.00	0.00
11,500.00	90.00	0.00	5,731.00	5,540.16	-135.98	5,541.73	0.00	0.00	0.00
11,600.00	90.00	0.00	5,731.00	5,640.16	-135.98	5,641.71	0.00	0.00	0.00
11,700.00	90.00	0.00	5,731.00	5,740.16	-135.98	5,741.69	0.00	0.00	0.00
11,800.00	90.00	0.00	5,731.00	5,840.16	-135.98	5,841.68	0.00	0.00	0.00
11,900.00	90.00	0.00	5,731.00	5,940.16	-135.98	5,941.66	0.00	0.00	0.00
12,000.00	90.00	0.00	5,731.00	6,040.16	-135.98	6,041.64	0.00	0.00	0.00
12,100.00	90.00	0.00	5,731.00	6,140.16	-135.98	6,141.62	0.00	0.00	0.00
12,200.00	90.00	0.00	5,731.00	6,240.16	-135.98	6,241.61	0.00	0.00	0.00



WOG Planning Report

Database:	LandmarkEDM	Local Co-ordinate Reference:	Well Horsetail Fed #07G-0611
Company:	Whiting Petroleum Corp.	TVD Reference:	KBE @ 4916.00usft
Project:	Weld County, CO	MD Reference:	KBE @ 4916.00usft
Site:	Sec 7-T10N-R57W	North Reference:	True
Well:	Horsetail Fed #07G-0611	Survey Calculation Method:	Minimum Curvature
Wellbore:	Hz		
Design:	Design #1		

Planned Survey										
Measured Depth (usft)	Inclination (°)	Azimuth (°)	Vertical Depth (usft)	+N/-S (usft)	+E/-W (usft)	Vertical Section (usft)	Dogleg Rate (°/100ft)	Build Rate (°/100ft)	Turn Rate (°/100ft)	
12,300.00	90.00	0.00	5,731.00	6,340.16	-135.98	6,341.59	0.00	0.00	0.00	
12,400.00	90.00	0.00	5,731.00	6,440.16	-135.98	6,441.57	0.00	0.00	0.00	
12,500.00	90.00	0.00	5,731.00	6,540.16	-135.98	6,541.56	0.00	0.00	0.00	
12,600.00	90.00	0.00	5,731.00	6,640.16	-135.98	6,641.54	0.00	0.00	0.00	
12,700.00	90.00	0.00	5,731.00	6,740.16	-135.98	6,741.52	0.00	0.00	0.00	
12,800.00	90.00	0.00	5,731.00	6,840.16	-135.98	6,841.51	0.00	0.00	0.00	
12,900.00	90.00	0.00	5,731.00	6,940.16	-135.98	6,941.49	0.00	0.00	0.00	
13,000.00	90.00	0.00	5,731.00	7,040.16	-135.98	7,041.47	0.00	0.00	0.00	
13,100.00	90.00	0.00	5,731.00	7,140.16	-135.98	7,141.45	0.00	0.00	0.00	
13,200.00	90.00	0.00	5,731.00	7,240.16	-135.98	7,241.44	0.00	0.00	0.00	
13,300.00	90.00	0.00	5,731.00	7,340.16	-135.98	7,341.42	0.00	0.00	0.00	
13,336.84	90.00	0.00	5,731.00	7,377.00	-135.98	7,378.26	0.00	0.00	0.00	
TD at 13336.84										

Design Targets									
Target Name	Dip Angle (°)	Dip Dir. (°)	TVD (usft)	+N/-S (usft)	+E/-W (usft)	Northing (usft)	Easting (usft)	Latitude	Longitude
- hit/miss target									
- Shape									
PBHL 0611A	0.00	0.00	5,731.00	7,377.00	-135.98	1,565,703.91	3,472,386.64	40° 52' 25.470 N	103° 47' 30.620 W
- plan hits target center									
- Point									

Casing Points					
Measured Depth (usft)	Vertical Depth (usft)	Name	Casing Diameter (in)	Hole Diameter (in)	
6,050.84	5,731.00	7" CSG PT/5 1/2" Marker	7.000	8.750	

Formations						
Measured Depth (usft)	Vertical Depth (usft)	Name	Lithology	Dip (°)	Dip Direction (°)	
1,555.49	1,550.00	Upper Pierre				
3,515.62	3,500.00	Hygiene				
3,666.40	3,650.00	Lower Pierre				
5,691.63	5,612.00	P200 Marker				
5,736.47	5,639.00	P300 Marker				
5,771.71	5,658.00	P350 Marker				
5,789.88	5,667.00	Sharon Springs				
5,809.29	5,676.00	Niobrara				
5,867.29	5,699.00	Top A Chalk				



WOG

Planning Report

Database:	LandmarkEDM	Local Co-ordinate Reference:	Well Horsetail Fed #07G-0611
Company:	Whiting Petroleum Corp.	TVD Reference:	KBE @ 4916.00usft
Project:	Weld County, CO	MD Reference:	KBE @ 4916.00usft
Site:	Sec 7-T10N-R57W	North Reference:	True
Well:	Horsetail Fed #07G-0611	Survey Calculation Method:	Minimum Curvature
Wellbore:	Hz		
Design:	Design #1		

Plan Annotations				
Measured Depth (usft)	Vertical Depth (usft)	Local Coordinates		Comment
		+N/-S (usft)	+E/-W (usft)	
300.00	300.00	0.00	0.00	Build 2°/100'
591.40	590.90	-14.12	-4.46	Hold 5.83° Inc
4,741.05	4,719.10	-415.88	-131.52	Drop 2°/100'
5,032.45	5,010.00	-430.00	-135.98	Hold Vertical
5,232.45	5,210.00	-430.00	-135.98	KOP, Build 11°/100'
6,050.84	5,731.00	91.00	-135.98	LP @ 90° Inc, Hold
13,336.84	5,731.00	7,377.00	-135.98	TD at 13336.84