

RAIDIAL CEMENT BOND  
GAMMA RAY  
CCL

Company	KERR-MCGEE OIL AND GAS		
Well	CHIKUMA HARRY S GU "B" #1		
Field	DJ BASIN		
County	WELD		
State	COLORADO		
Location:	API # : 05-123-08588-0000		
	LAT: 40.05410 LONG: -104.83540		
	SEC 13 TWP 1N RGE 67W		
Permanent Datum	GROUND LEVEL	Elevation	4914 FT
Log Measured From	KELLY BUSHING		
Drilling Measured From	KELLY BUSHING	10FT	
			K.B. 4924 FT D.F. 4925 FT G.L. 4914 FT

Run Number	ONE		
Depth Driller	8100 FT		
Depth Logger	1750 FT		
Bottom Logged Interval	1700 FT		
Top Log Interval	SURFACE		
Open Hole Size	7.875 IN		
Type Fluid	WATER		
Density / Viscosity	8.3#		
Max. Recorded Temp.	91 F		
Estimated Cement Top			
Time Well Ready	10:00		
Time Logger on Bottom	11:00		
Equipment Number	W-062		
Location	WINDSOR		
Recorded By	B. NORRIS		
Witnessed By	MR. NATE WINDHOLZ		

Borehole Record				Tubing Record			
Run Number	Bit	From	To	Size	Weight	From	To
Casing Record		Size		Wgt/Ft		Top	Bottom
Surface String		8.63 IN		24#		SURFACE	208FT
Prot. String							
Production String		4.5 IN		11.6#		SURFACE	8099 FT
Liner							

^^^ Fold Here >>>

All interpretations are opinions based on inferences from electrical or other measurements and we cannot and do not guarantee the accuracy or correctness of any interpretation, and we shall not, except in the case of gross or willful negligence on our part, be liable or responsible for any loss, costs, damages, or expenses incurred or sustained by anyone resulting from any interpretation made by any of our officers, agents or employees. These interpretations are also subject to our general terms and conditions set out in our current Price Schedule.

## Comments

FREE PIPE CALIBRATION DONE AT 11 35 FT

FREE PIPE READING EQUALS 82 mV

THANK YOU FOR USING CUTTERS WIRELINE

# Calibration Report

Database File: anadqarko\_rcbl\_020416.db  
Dataset Pathname: pass15.2  
Dataset Creation: Thu Feb 04 11:40:13 2016 by Calc SCH 110630

# Temperature Calibration Report

Serial Number: 060110  
 Tool Model: 1.375TEMP  
 Performed: Sun Jun 03 16:49:35 2012

	Reference	Reading
Low Reference:	1.00 degF	10.00 cps
High Reference:	100.00 degF	1000.00 cps
Gain:	0.10	
Offset:	0.00	
Delta Spacing	1	

## Gamma Ray Calibration Report

Serial Number: 060109  
 Tool Model: Probe  
 Performed: Mon Jan 26 09:19:58 2009

Calibrator Value: 185.2 GAPI

Background Reading: 4.8 cps  
 Calibrator Reading: 200.0 cps

Sensitivity: 0.9487 GAPI/cps

## Segmented Cement Bond Log Calibration Report

Serial Number: 060113\_45  
 Tool Model: Probe

Calibration Casing Diameter: 5.500 in  
 Calibration Depth: 1724.950 ft

Master Calibration, performed Thu Feb 04 11:08:05 2016:

	Raw (v)		Calibrated (mv)		Results	
	Zero	Cal	Zero	Cal	Gain	Offset
3'	0.000	0.700	0.000	82.000	117.143	0.000
CAL	0.000	0.507				
5'	0.000	0.266	0.000	82.000	308.649	0.000
SUM						
S1	0.000	0.435	0.000	100.000	230.048	0.000
S2	0.000	0.403	0.000	100.000	248.100	0.000
S3	0.000	0.345	0.000	100.000	289.993	0.000
S4	0.000	0.342	0.000	100.000	292.749	0.000
S5	0.000	0.363	0.000	100.000	275.343	0.000
S6	0.000	0.392	0.000	100.000	255.059	0.000
S7	0.000	0.396	0.000	100.000	252.364	0.000
S8	0.000	0.338	0.000	100.000	295.975	0.000

Internal Reference Calibration, performed Wed Dec 31 17:00:00 1969:

	Raw (v)		Calibrated (v)		Results	
	Zero	Cal	Zero	Cal	Gain	Offset
CAL	0.000	0.000	0.000	0.507	1.000	0.000

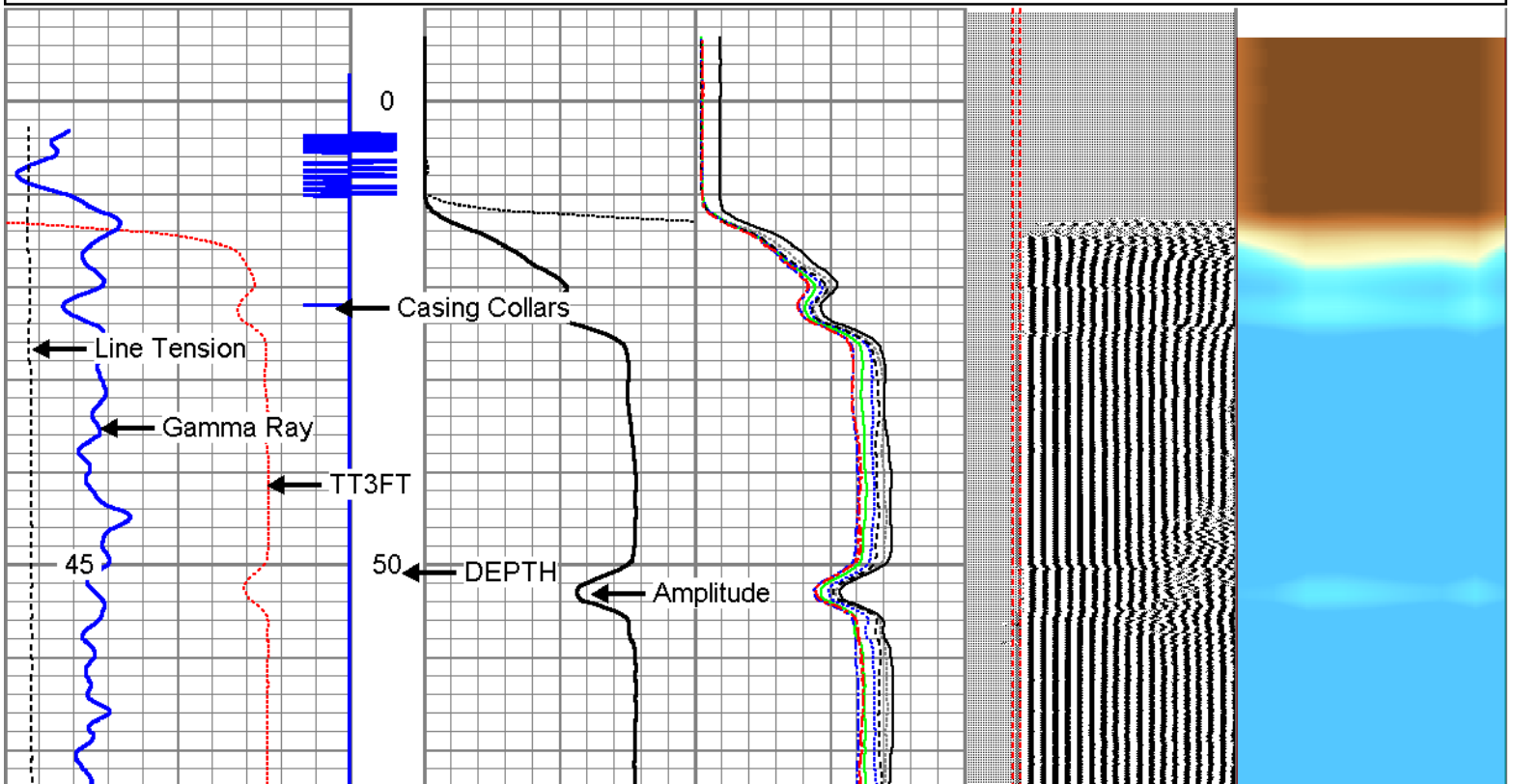
	Raw (v)	Calibrated (v)	Results
	Zero	Zero	Offset
3'	0.000	0.000	0.000
5'	0.000	0.000	0.000
SUM			
S1	0.000	0.000	0.000
S2	0.000	0.000	0.000
S3	0.000	0.000	0.000
S4	0.000	0.000	0.000
S5	0.000	0.000	0.000
S6	0.000	0.000	0.000
S7	0.000	0.000	0.000
S8	0.000	0.000	0.000

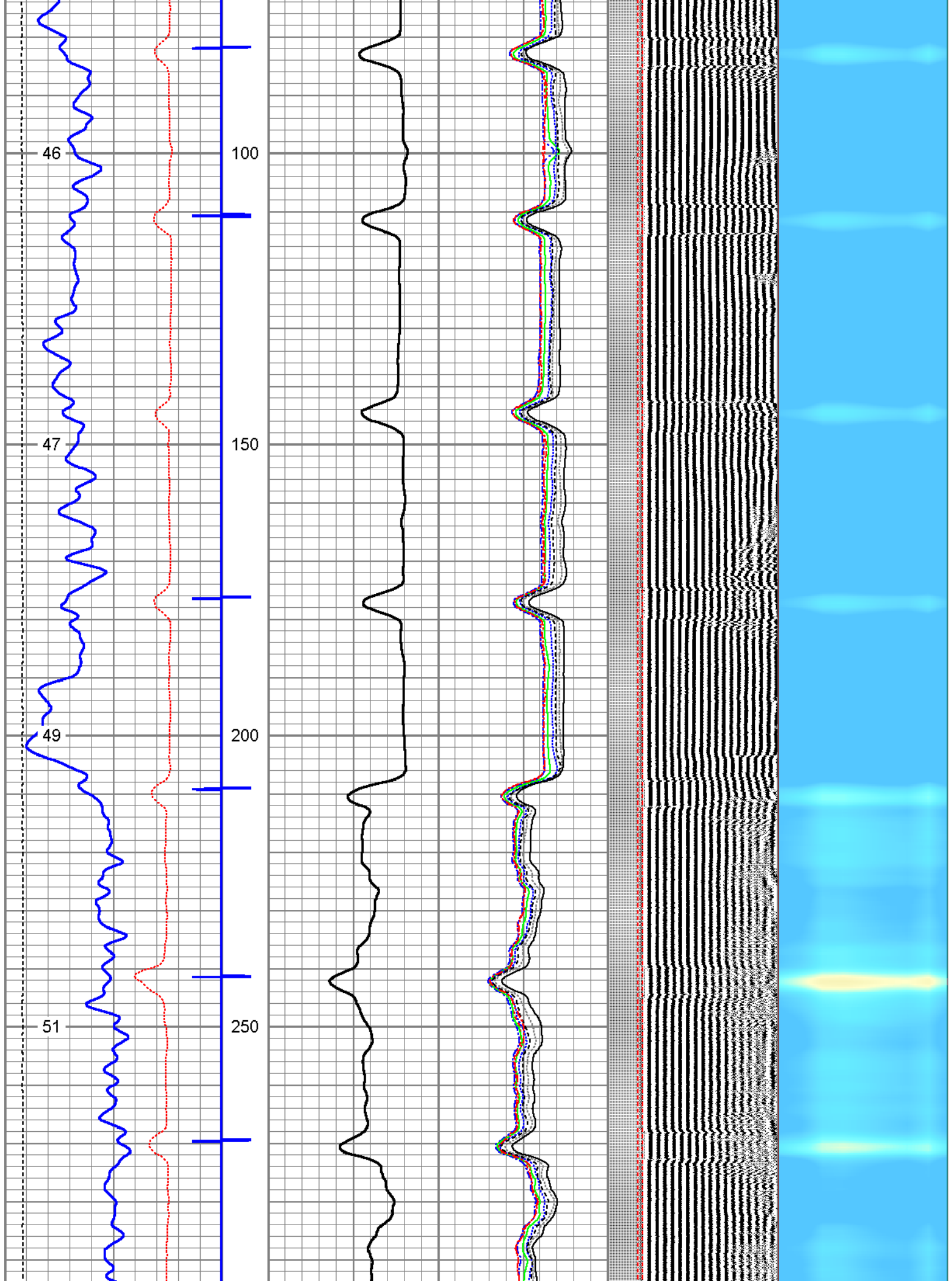


## MAIN PASS 0 PSI

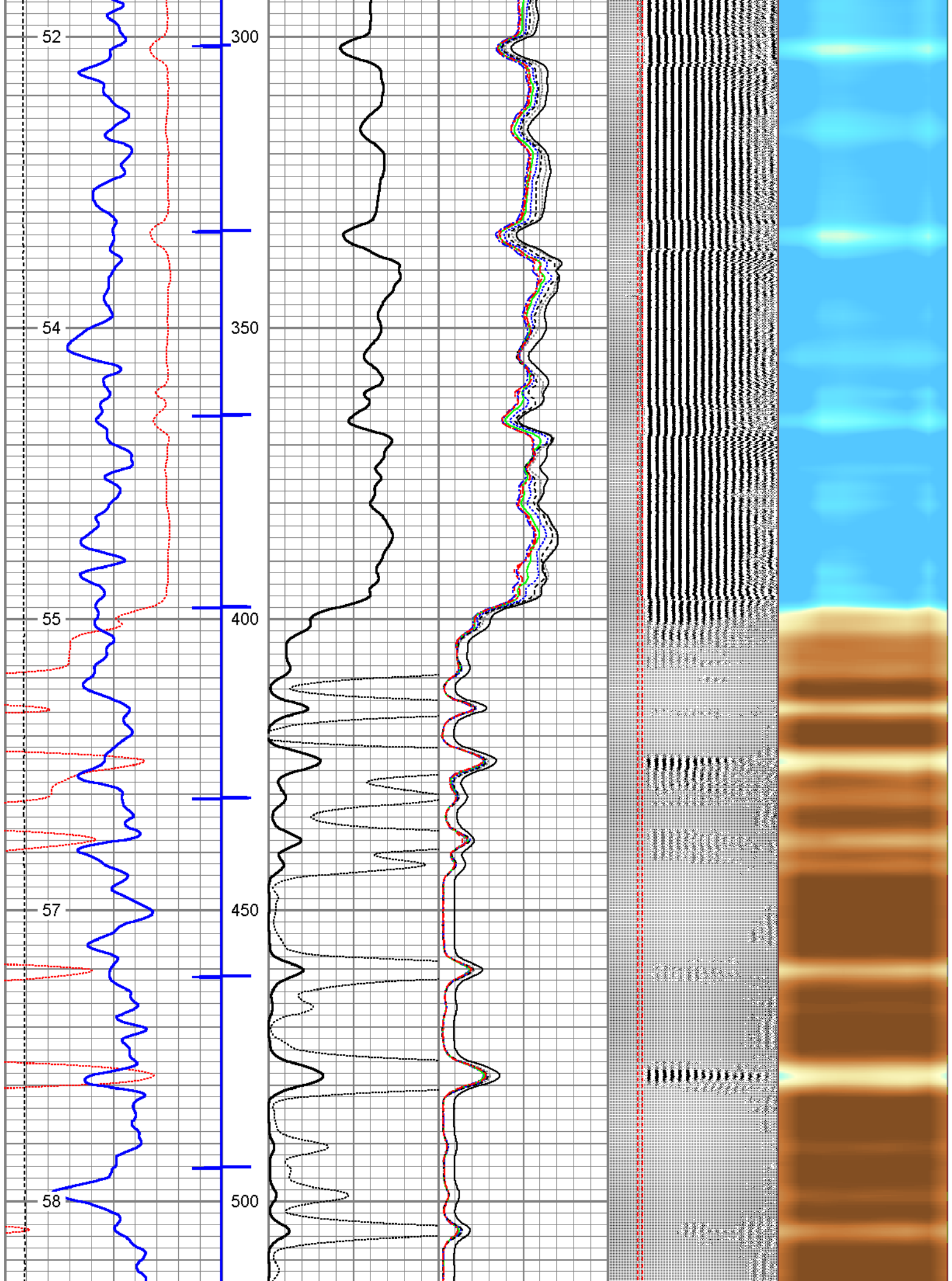
Database File: anadqarko\_rcbl\_020416.db  
 Dataset Pathname: pass15.3  
 Presentation Format: rbl55  
 Dataset Creation: Thu Feb 04 12:04:27 2016 by Calc SCH 110630  
 Charted by: Depth in Feet scaled 1:240

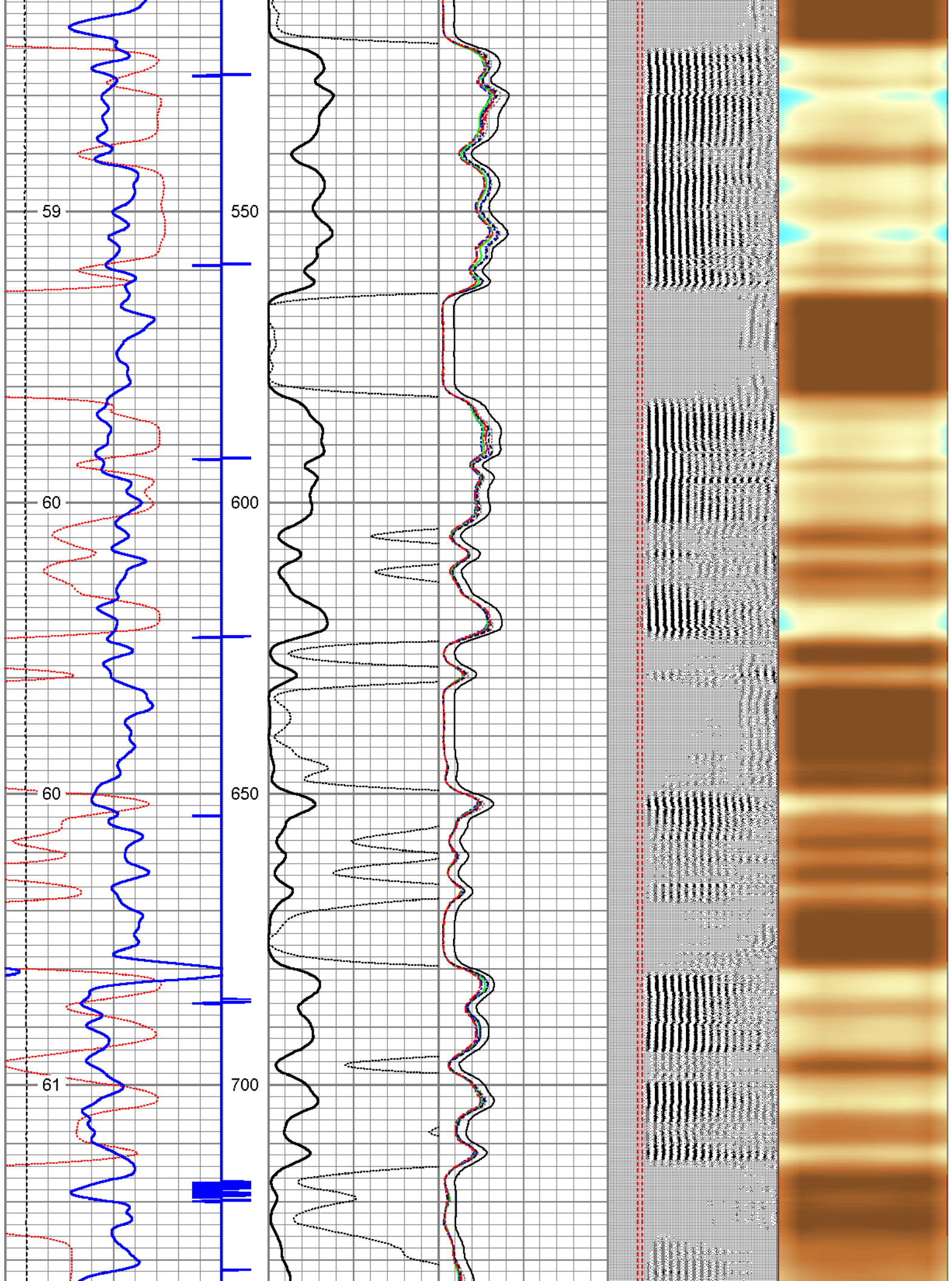
343 Travel Time (usec) 243	3' Amplitude	-5 Radial Sectors150	200	VDL	1200	1	Cement Map	8
0 Gamma Ray (GAPI)200	0 (mV) 100					1		80
0 Line Tension (lb) 4000	Amplified Amplitude							
TEMP	0 (mV) 10							
(degF)								



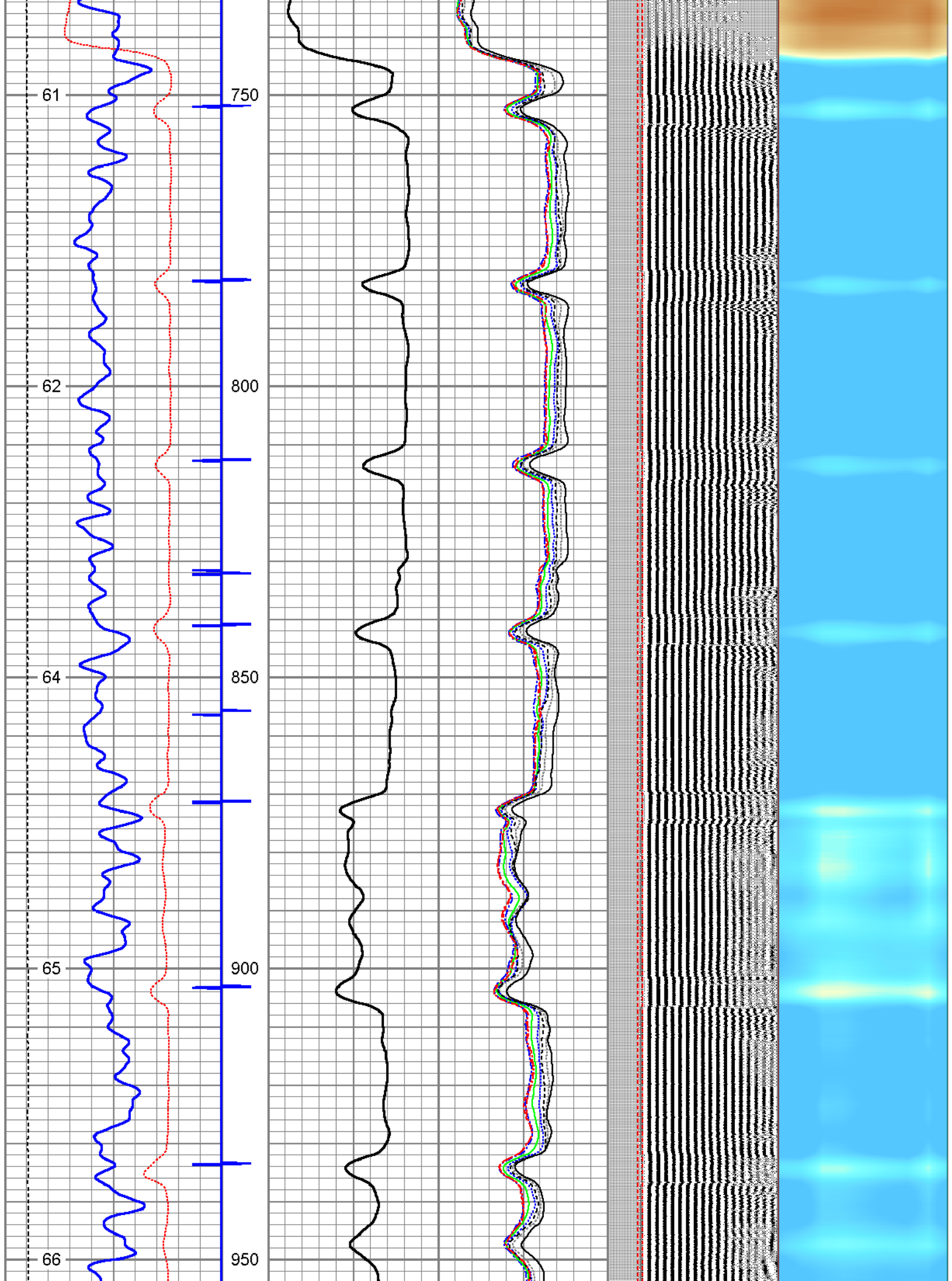


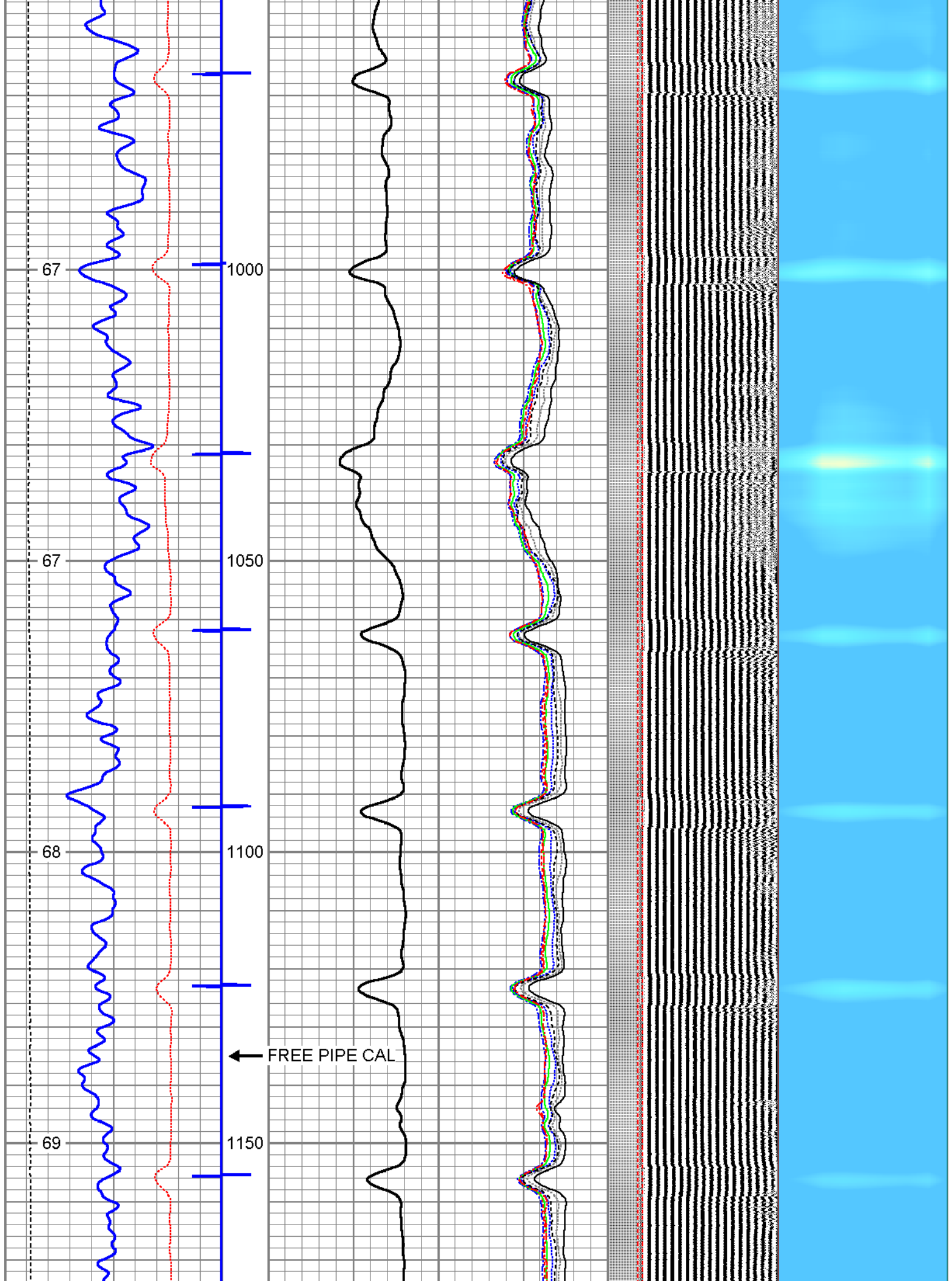




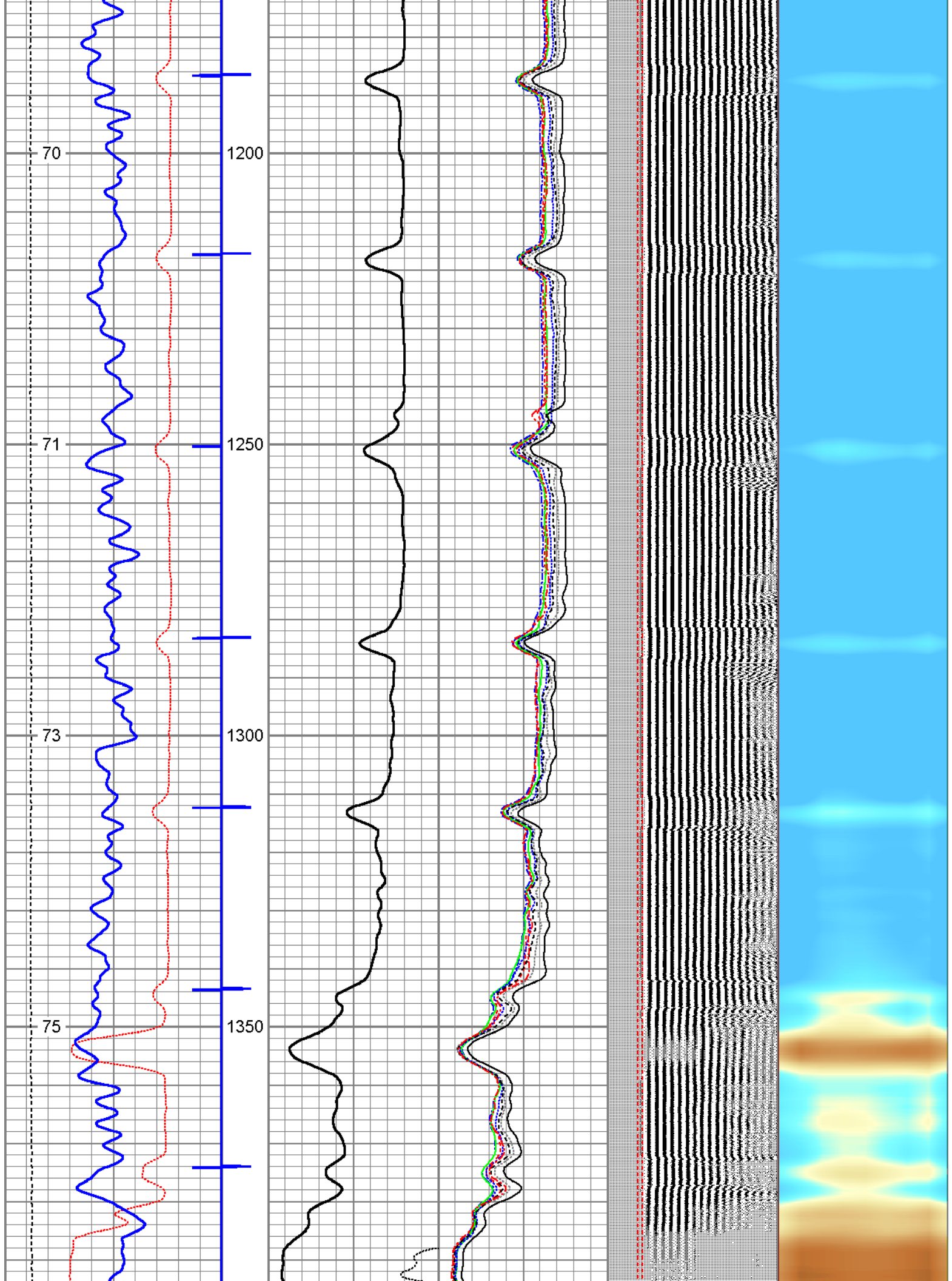


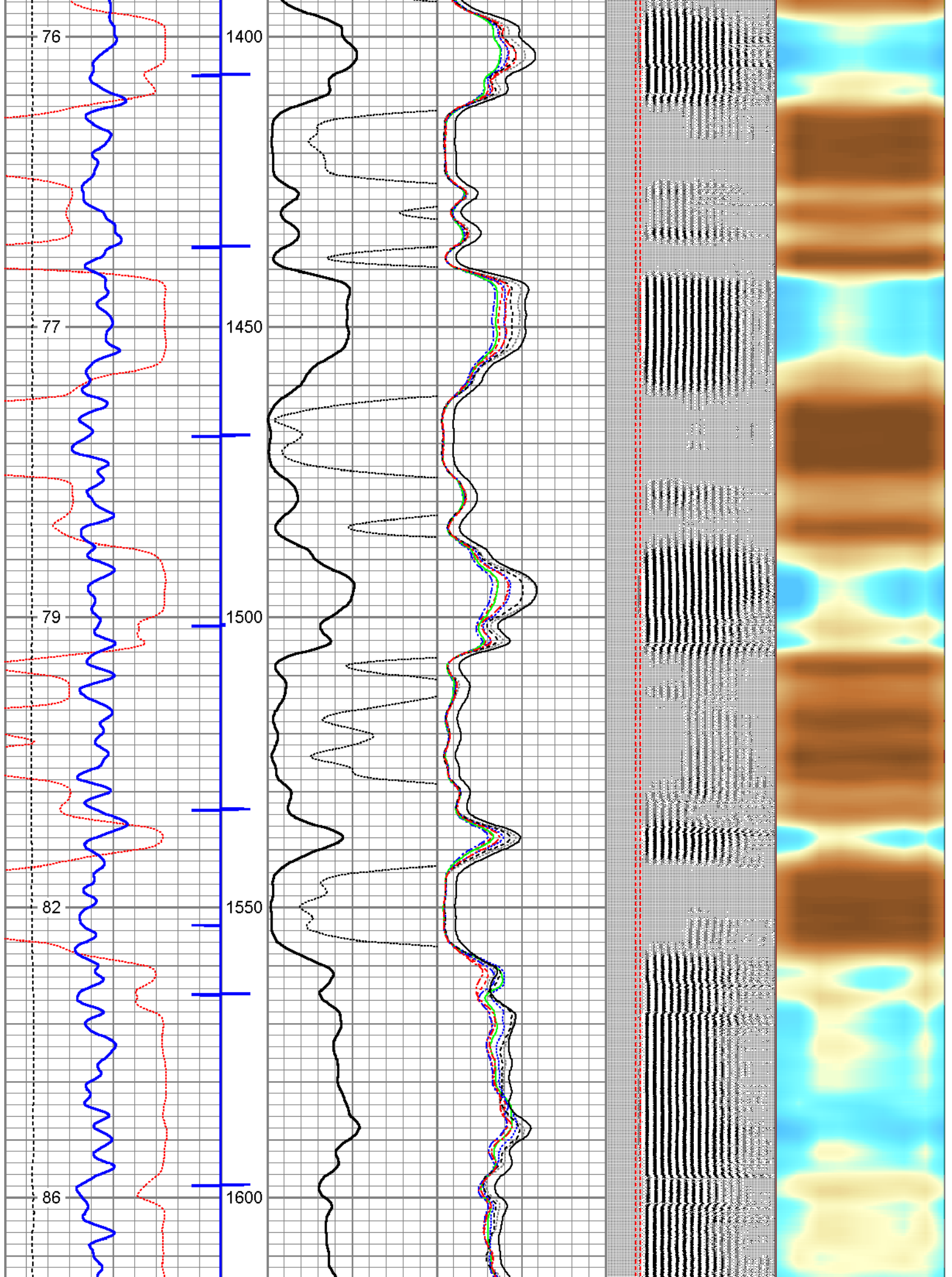


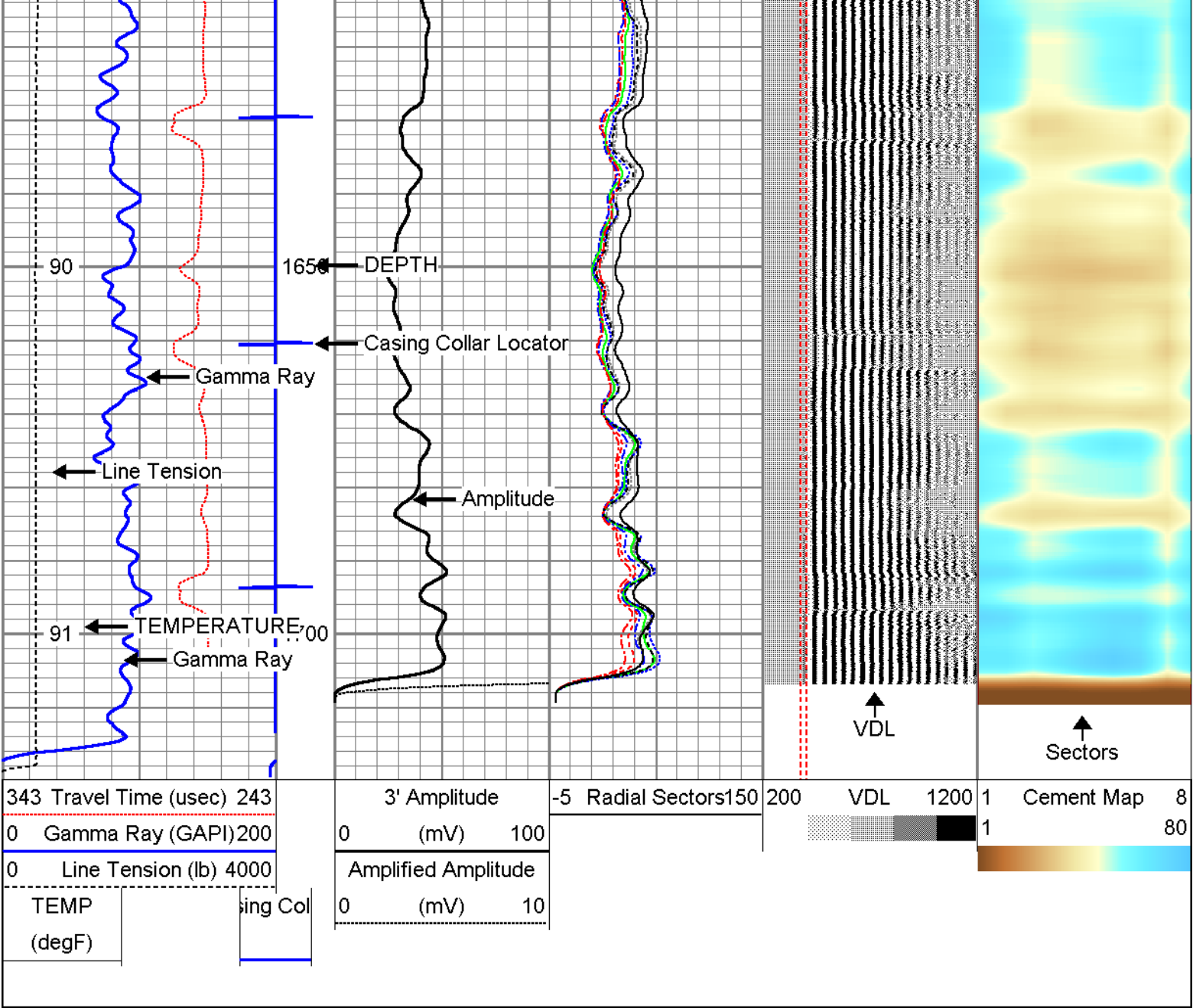












Sensor	Offset (ft)	Schematic	Description	Len (ft)	OD (in)	Wt (lb)
			Probe	2.86	2.75	40.00



WVF3FT	12.30		RBT-Probe (060113_45) Probe 2.75" Radii Bond Tool	9.39	2.75	90.00
WVFCAL	12.30					
WVFS1	12.30					
WVFS2	12.30					
WVFS3	12.30					
WVFS4	12.30					
WVFS5	12.30					
WVFS6	12.30					
WVFS7	12.30					
WVFS8	12.30					
WVF5FT	11.30					
			Probe	2.86	2.75	40.00
CCL	4.75					
			GR-Probe (060109) Probe 2.75" 4 Channel Pulse	4.00	2.75	30.00
GR	2.25					
			TEMP-1.375TEMP (060110) Temperature Tool	1.25	1.38	30.00
TEMP	0.08					
Dataset: anadqarko_rcbl_020416.db: field/well/run1/pass15.2 Total Length: 20.36 ft Total Weight: 230.00 lb O.D. 2.75 in						

	Company	KERR-MCGEE OIL AND GAS
	Well	CHIKUMA HARRY S GU "B" #1
	Field	DJ BASIN
	County	WELD
	State	COLORADO