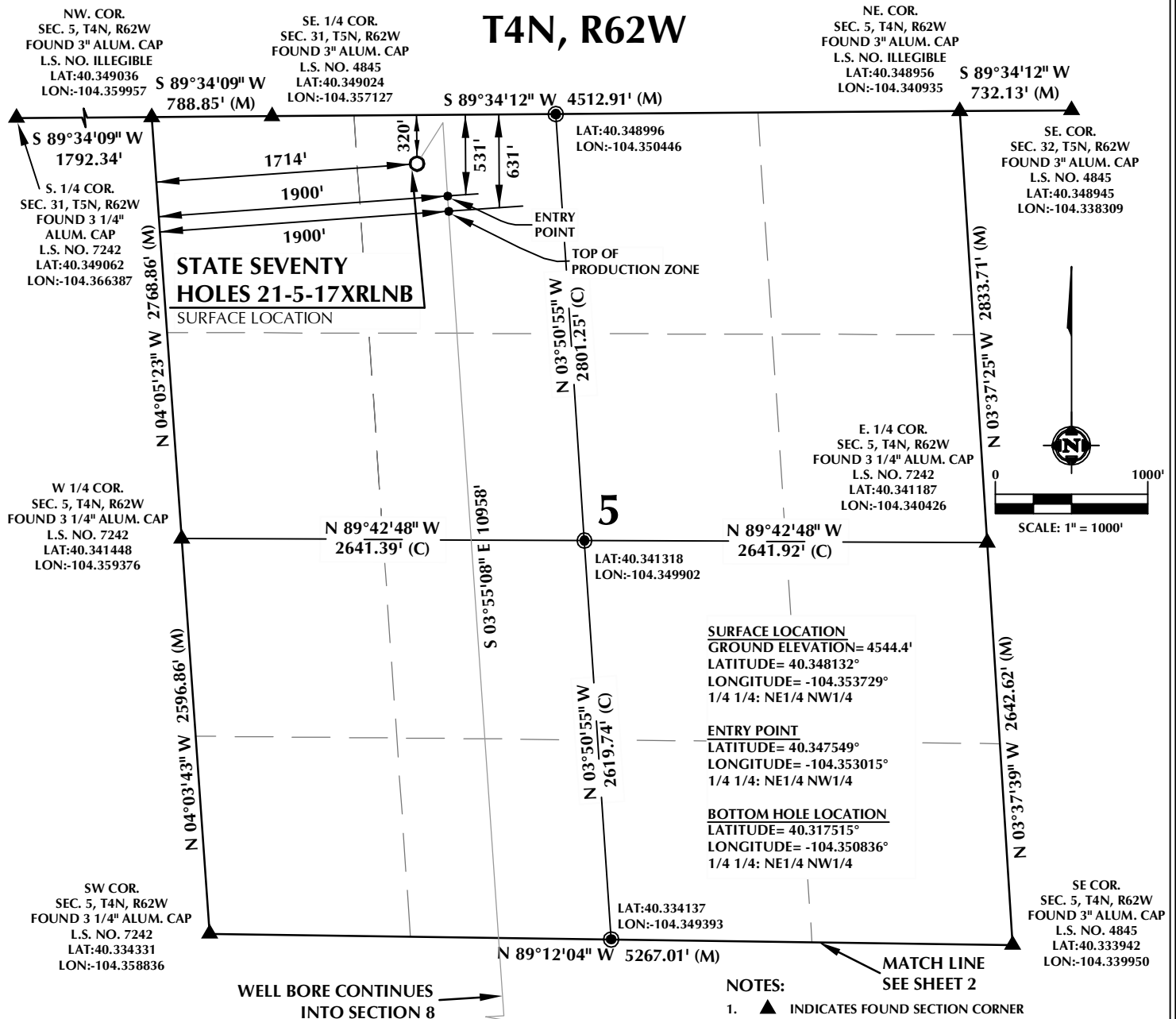


T4N, R62W



CERTIFICATE OF SURVEYOR:

THIS IS TO CERTIFY THAT THE ABOVE PLAT WAS PREPARED FROM FIELD NOTES OF ACTUAL SURVEY MADE BY ME OR UNDER MY SUPERVISION AND THAT THE SAME ARE TRUE AND CORRECT TO THE BEST OF MY KNOWLEDGE AND BELIEF. THIS CERTIFICATE DOES NOT REPRESENT A LAND SURVEY PLAT OR IMPROVEMENT SURVEY PLAT AS DEFINED BY C.R.S. 38-51-102 AND CANNOT BE RELIED UPON TO DETERMINE OWNERSHIP.

Jacob I. Dunham
JACOB I. DUNHAM
PROFESSIONAL LAND SURVEYOR
COLORADO REGISTRATION NUMBER 18459
11/2/15

NOTICE:
ACCORDING TO COLORADO STATE LAW YOU MUST COMMENCE ANY LEGAL ACTION BASED UPON ANY DEFECT IN THIS SURVEY WITHIN THREE YEARS AFTER YOU FIRST DISCOVER SUCH DEFECT. IN NO EVENT MAY ANY ACTION BASED UPON ANY DEFECT IN THIS SURVEY BE COMMENCED MORE THAN TEN YEARS FROM THE DATE ON THE CERTIFICATION SHOWN HEREON.

NEAREST CULTURAL ITEMS:

BUILDING: 5280+
BUILDING UNIT: 5280+
HIGH OCCUPANCY BUILDING UNIT: 5280+
DESIGNATED OUTSIDE ACTIVITY AREA: 5280+
PUBLIC ROAD: 5280+
ABOVE GROUND UTILITY: 5280+
RAILROAD: 5280+
PROPERTY LINE: ±320' N

NOTES:

- ▲ INDICATES FOUND SECTION CORNER
- INDICATES CALCULATED CORNER
- DRAWING LATITUDE AND LONGITUDE COORDINATES ARE NAD 83 (2011)(EPOCH:2010)
- ELEVATION BASED ON NAVD88 (GEOID12B)
- BASIS OF BEARING DERIVED FROM COLORADO COORDINATE SYSTEM 1983 NORTH ZONE UNLESS OTHERWISE NOTED.
- ALL MEASURED DISTANCES ARE GRID. COMBINED SCALE FACTOR: .99974487
- OPERATOR: ROB WILSON / PDOP = 1.4
- SEE ADDENDUM TO WELL LOCATION CERTIFICATE FOR EXISTING IMPROVEMENTS WITHIN 500' OF THE WELL PAD.
- WELL FOOTAGES ARE MEASURED AT RIGHT ANGLES TO THE SECTION LINES.
- THE BOTTOM OF HOLE BEARS S03°55'08"E 10958' FROM THE ENTRY POINT.

WELL PAD - SEVENTY HOLES F-5

STATE SEVENTY HOLES 21-5-17XRLNB
WELL LOCATION CERTIFICATE
320' FNL & 1714' FWL NENW (SURFACE)
531' FNL & 1900' FWL NENW (ENTRY POINT)
LOCATED IN SECTION 5
850' FNL & 1937' FWL NENW (BOTTOM)
LOCATED IN SECTION 17
T4N, R62W, 6TH P.M.
WELD COUNTY, COLORADO

BONANZA CREEK
410 17th Street, Suite 1400
Denver, Colorado 80202



CONSULTING, LLC

SHERIDAN OFFICE
1095 Saberton Avenue
Sheridan, Wyoming 82801
Phone 307-674-0609

LOVELAND OFFICE
1635 Foxtrail Drive, Suite 204
Loveland, Colorado 80538
Phone 970-776-4331

DRAFTED BY:	LMO	CHECKED BY:	JID	SHEET NO:
DATE DRAFTED:	8/3/15	DATE SURVEYED:	7/28/15	1
REVISED:	11/2/15	FILE NAME:	14-110	1 OF 3

T4N, R62W

NW COR.
SEC. 8, T4N, R62W
FOUND 3 1/4" ALUM. CAP
L.S. NO. 7242
LAT:40.334331
LON:-104.358836

NE COR.
SEC. 8, T4N, R62W
FOUND 3" ALUM. CAP
L.S. NO. 4845
LAT:40.333942
LON:-104.339950

MATCH LINE
SEE SHEET 1

N 89°12'04" W 5267.01' (M)

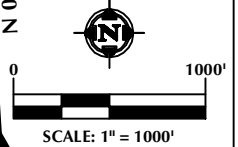
LAT:40.334137
LON:-104.349393

N 03°39'51" W

2620.47' (C)

N 03°37'48" W 2643.48' (M)

E. 1/4 COR.
SEC. 8, T4N, R62W
FOUND 3" ALUM. CAP
L.S. NO. 4845
LAT:40.326695
LON:-104.339473



LAT:40.327211
LON:-104.358363

N 88°41'58" W
2636.13' (C)

8

LAT:40.326953
LON:-104.348914

N 88°41'58" W
2633.82' (C)

SURFACE LOCATION
GROUND ELEVATION= 4544.4'
LATITUDE= 40.348132°
LONGITUDE= -104.353729°
1/4 1/4: NE1/4 NW1/4

ENTRY POINT
LATITUDE= 40.347549°
LONGITUDE= -104.353015°
1/4 1/4: NE1/4 NW1/4

BOTTOM HOLE LOCATION
LATITUDE= 40.317515°
LONGITUDE= -104.350836°
1/4 1/4: NE1/4 NW1/4

SW COR.
SEC. 8, T4N, R62W
FOUND 2 1/2" ALUM. CAP
L.S. NO. 7242
LAT:40.320091
LON:-104.357890

N 88°11'46" W 5277.94' (M)

SE COR.
SEC. 8, T4N, R62W
FOUND 3" ALUM. CAP
L.S. NO. 4845
LAT:40.319446
LON:-104.338980

MATCH LINE
SEE SHEET 3

WELL BORE CONTINUES
INTO SECTION 17

CERTIFICATE OF SURVEYOR:

THIS IS TO CERTIFY THAT THE ABOVE PLAT WAS PREPARED FROM FIELD NOTES OF ACTUAL SURVEY MADE BY ME OR UNDER MY SUPERVISION AND THAT THE SAME ARE TRUE AND CORRECT TO THE BEST OF MY KNOWLEDGE AND BELIEF. THIS CERTIFICATE DOES NOT REPRESENT A LAND SURVEY PLAT OR IMPROVEMENT SURVEY PLAT AS DEFINED BY C.R.S. 38-51-102 AND CANNOT BE RELIED UPON TO DETERMINE OWNERSHIP.

Jacob I. Dunham
PROFESSIONAL LAND SURVEYOR
COLORADO REGISTRATION NUMBER 18459
11/2/15

NOTICE:
ACCORDING TO COLORADO STATE LAW YOU MUST COMMENCE ANY LEGAL ACTION BASED UPON ANY DEFECT IN THIS SURVEY WITHIN THREE YEARS AFTER YOU FIRST DISCOVER SUCH DEFECT. IN NO EVENT MAY ANY ACTION BASED UPON ANY DEFECT IN THIS SURVEY BE COMMENCED MORE THAN TEN YEARS FROM THE DATE ON THE CERTIFICATION SHOWN HEREON.

NEAREST CULTURAL ITEMS:

BUILDING: 5280+
BUILDING UNIT: 5280+
HIGH OCCUPANCY BUILDING UNIT: 5280+
DESIGNATED OUTSIDE ACTIVITY AREA: 5280+
PUBLIC ROAD: 5280+
ABOVE GROUND UTILITY: 5280+
RAILROAD: 5280+
PROPERTY LINE: ±320' N

NOTES:

- ▲ INDICATES FOUND SECTION CORNER
- INDICATES CALCULATED CORNER
- DRAWING LATITUDE AND LONGITUDE COORDINATES ARE NAD 83 (2011)(EPOCH:2010)
- ELEVATION BASED ON NAVD88 (GEOID12B)
- BASIS OF BEARING DERIVED FROM COLORADO COORDINATE SYSTEM 1983 NORTH ZONE UNLESS OTHERWISE NOTED.
- ALL MEASURED DISTANCES ARE GRID.
COMBINED SCALE FACTOR: .99974487
- OPERATOR: ROB WILSON / PDOP = 1.4
- SEE ADDENDUM TO WELL LOCATION CERTIFICATE FOR EXISTING IMPROVEMENTS WITHIN 500' OF THE WELL PAD.
- WELL FOOTAGES ARE MEASURED AT RIGHT ANGLES TO THE SECTION LINES.
- THE BOTTOM OF HOLE BEARS S03°55'08"E 10958' FROM THE ENTRY POINT.

WELL PAD - SEVENTY HOLES F-5

STATE SEVENTY HOLES 21-5-17XRLNB
WELL LOCATION CERTIFICATE
320' FNL & 1714' FWL NENW (SURFACE)
531' FNL & 1900' FWL NENW (ENTRY POINT)
LOCATED IN SECTION 5
850' FNL & 1937' FWL NENW (BOTTOM)
LOCATED IN SECTION 17
T4N, R62W, 6TH P.M.
WELD COUNTY, COLORADO

 **BONANZA CREEK**
410 17th Street, Suite 1400
Denver, Colorado 80202



CONSULTING, LLC

SHERIDAN OFFICE
1095 Saberton Avenue
Sheridan, Wyoming 82801
Phone 307-674-0609

LOVELAND OFFICE
1635 Foxtrail Drive, Suite 204
Loveland, Colorado 80538
Phone 970-776-4331

DRAFTED BY:	LMO	CHECKED BY:	JID	SHEET NO:
DATE DRAFTED:	8/3/15	DATE SURVEYED:	7/28/15	2
REVISED:	11/2/15	FILE NAME:	14-110	2 OF 3

T4N, R62W

NW COR.
SEC. 17, T4N, R62W
FOUND 2 1/2" ALUM. CAP
L.S. NO. 7242
LAT:40.320091
LON:-104.357890

NE COR.
SEC. 17, T4N, R62W
FOUND 3" ALUM. CAP
L.S. NO. 4845
LAT:40.319446
LON:-104.338980

MATCH LINE
SEE SHEET 2

LAT:40.319769
LON:-104.348435

1937'

BOTTOM
OF HOLE

N 02°07'37" W
2699.69' (C)

17

N 88°59'52" W
2618.75' (C)

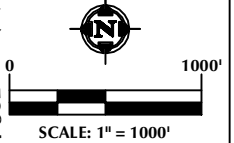
N 88°59'52" W
2618.75' (C)

LAT:40.312141
LON:-104.338815

LAT:40.312579
LON:-104.357587

N 02°30'07" W
5475.43' (M)

N 01°44'29" W
5323.56' (M)



SURFACE LOCATION
GROUND ELEVATION= 4544.4'
LATITUDE= 40.348132°
LONGITUDE= -104.353729°
1/4 1/4: NE1/4 NW1/4

ENTRY POINT
LATITUDE= 40.347549°
LONGITUDE= -104.353015°
1/4 1/4: NE1/4 NW1/4

BOTTOM HOLE LOCATION
LATITUDE= 40.317515°
LONGITUDE= -104.350836°
1/4 1/4: NE1/4 NW1/4

LAT:40.304952
LON:-104.347968

N 89°48'44" W 5198.09' (M)

SW COR.
SEC. 17, T4N, R62W
FOUND 2 1/2" ALUM. CAP
L.S. NO. 17492
LAT:40.305067
LON:-104.357285

SE COR.
SEC. 17, T4N, R62W
FOUND 2 1/2" ALUM. CAP
L.S. NO. 7242
LAT:40.304835
LON:-104.338650

CERTIFICATE OF SURVEYOR:

THIS IS TO CERTIFY THAT THE ABOVE PLAT WAS PREPARED FROM FIELD NOTES OF ACTUAL SURVEY MADE BY ME OR UNDER MY SUPERVISION AND THAT THE SAME ARE TRUE AND CORRECT TO THE BEST OF MY KNOWLEDGE AND BELIEF. THIS CERTIFICATE DOES NOT REPRESENT A LAND SURVEY PLAT OR IMPROVEMENT SURVEY PLAT AS DEFINED BY C.R.S. 38-51-102 AND CANNOT BE RELIED UPON TO DETERMINE OWNERSHIP.

Jacob I. Dunham
JACOB I. DUNHAM
PROFESSIONAL LAND SURVEYOR
COLORADO REGISTRATION NUMBER 18459
11/2/15

NOTICE:
ACCORDING TO COLORADO STATE LAW YOU MUST COMMENCE ANY LEGAL ACTION BASED UPON ANY DEFECT IN THIS SURVEY WITHIN THREE YEARS AFTER YOU FIRST DISCOVER SUCH DEFECT. IN NO EVENT MAY ANY ACTION BASED UPON ANY DEFECT IN THIS SURVEY BE COMMENCED MORE THAN TEN YEARS FROM THE DATE ON THE CERTIFICATION SHOWN HEREON.

NEAREST CULTURAL ITEMS:

BUILDING: 5280+
BUILDING UNIT: 5280+
HIGH OCCUPANCY BUILDING UNIT: 5280+
DESIGNATED OUTSIDE ACTIVITY AREA: 5280+
PUBLIC ROAD: 5280+
ABOVE GROUND UTILITY: 5280+
RAILROAD: 5280+
PROPERTY LINE: ±320' N

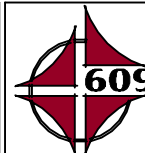
NOTES:

- ▲ INDICATES FOUND SECTION CORNER
- INDICATES CALCULATED CORNER
- DRAWING LATITUDE AND LONGITUDE COORDINATES ARE NAD 83 (2011)(EPOCH:2010)
- ELEVATION BASED ON NAVD88 (GEOID12B)
- BASIS OF BEARING DERIVED FROM COLORADO COORDINATE SYSTEM 1983 NORTH ZONE UNLESS OTHERWISE NOTED.
- ALL MEASURED DISTANCES ARE GRID.
COMBINED SCALE FACTOR: .99974487
- OPERATOR: ROB WILSON / PDOP = 1.4
- SEE ADDENDUM TO WELL LOCATION CERTIFICATE FOR EXISTING IMPROVEMENTS WITHIN 500' OF THE WELL PAD.
- WELL FOOTAGES ARE MEASURED AT RIGHT ANGLES TO THE SECTION LINES.
- THE BOTTOM OF HOLE BEARS S03°55'08"E 10958' FROM THE ENTRY POINT.

WELL PAD - SEVENTY HOLES F-5

STATE SEVENTY HOLES 21-5-17XRLNB
WELL LOCATION CERTIFICATE
320' FNL & 1714' FWL NENW (SURFACE)
531' FNL & 1900' FWL NENW (ENTRY POINT)
LOCATED IN SECTION 5
850' FNL & 1937' FWL NENW (BOTTOM)
LOCATED IN SECTION 17
T4N, R62W, 6TH P.M.
WELD COUNTY, COLORADO

 **BONANZA
CREEK**
410 17th Street, Suite 1400
Denver, Colorado 80202



CONSULTING, LLC

SHERIDAN OFFICE
1095 Saberton Avenue
Sheridan, Wyoming 82801
Phone 307-674-0609

LOVELAND OFFICE
1635 Foxtrail Drive, Suite 204
Loveland, Colorado 80538
Phone 970-776-4331

DRAFTED BY:	LMO	CHECKED BY:	JID	SHEET NO:
DATE DRAFTED:	8/3/15	DATE SURVEYED:	7/28/15	3
REVISED:	11/2/15	FILE NAME:	14-110	3 OF 3