



410 17th Street, Suite 1400
Denver, CO 80202
(720) 440-6100 phone
(720) 305-0804 fax

Bonanzaerck.com

February 9, 2016

Colorado Oil and Gas Conservation Commission
The Chancery Building
1120 Lincoln Street, Suite 801
Denver, CO 80203
Matthew Lepore, Director

Re: Notice of 318A.a.(4)D. Proposed Niobrara Horizontal Wellbore Spacing Unit

State Seventy Holes 11-5-17XRLNB
SHL: NENW (280' FNL, 1717' FWL) Sec.5-T4N-R62W, Weld County, CO
Top of Production: (631' FNL, 670' FWL) Sec. 5-T4N-R62W, Weld County, CO
Bottom of Production: (850' FNL, 693' FWL) Sec. 17-T4N-R62W, Weld County, CO

Director Lepore:

Bonanza Creek Energy Operating Company LLC ("Bonanza") intends to permit, drill and operate the referenced Niobrara Horizontal Well. As defined by Colorado Oil and Gas Conservation Commission (COGCC) Rule 318A.a.(4)D., Bonanza proposes the following wellbore spacing unit:

W/2W/2 of Section 5-T4N-R62W, Weld County, CO – containing 160 acres more or less
W/2W/2 of Section 8-T4N-R62W, Weld County, CO – containing 160 acres more or less
NW/NW of Section 17-T4N-R62W, Weld County, CO – containing 40 acres more or less

A map depicting the proposed wellbore spacing unit is attached, for your reference. Bonanza has notified the other owners in the unit and no objections were received. Copies of the notifications are maintained in Bonanza's files.

Bonanza respectfully requests that you review the enclosed wellbore spacing unit documentation and approve the referenced APD.

Please do not hesitate to call or email me at (303) 803-1718 or Jvigil@Bonanzaerck.com, should you have any questions pertaining to this matter.

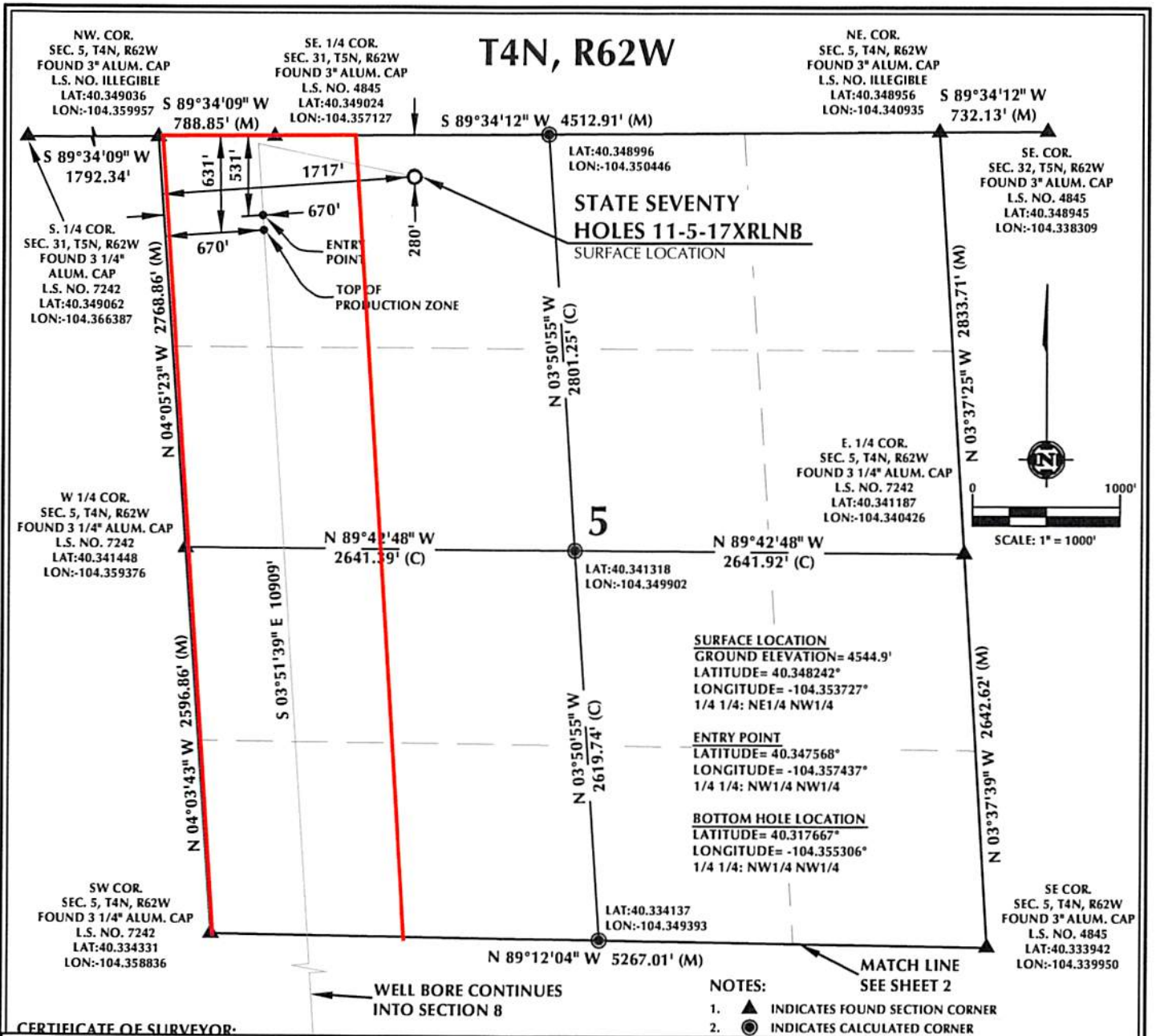
Sincerely,

A handwritten signature in blue ink that reads 'J. Vigil'.

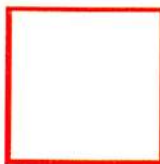
Julie L. Vigil

Sr. Regulatory Specialist

BONANZA CREEK ENERGY OPERATING COMPANY LLC



**BONANZA
CREEK**



Wellbore Spacing Unit Outline



Proposed Spacing Unit Map

November 23, 2015 KK

State Seventy Holes 11-5-17XRLNB

W/2W/2 Sec. 5-T4N-R62W

W/2W/2 Sec. 8-T4N-R62W

NW/4NW/2 Sec. 17-T4N-R62W

Weld County, Colorado

T4N, R62W

NW COR.
SEC. 8, T4N, R62W
FOUND 3 1/4" ALUM. CAP
L.S. NO. 7242
LAT:40.334331
LON:-104.358836

NE COR.
SEC. 8, T4N, R62W
FOUND 3" ALUM. CAP
L.S. NO. 4845
LAT:40.333942
LON:-104.339950

MATCH LINE
SEE SHEET 1

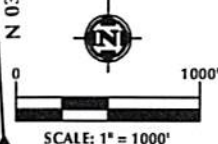
N 89°12'04" W 5267.01' (M)

LAT:40.334137
LON:-104.349393

N 03°39'51" W
2620.47' (C)

N 03°37'48" W 2643.48' (M)

E. 1/4 COR.
SEC. 8, T4N, R62W
FOUND 3" ALUM. CAP
L.S. NO. 4845
LAT:40.326695
LON:-104.339473



LAT:40.327211
LON:-104.358363

N 88°41'58" W
2636.73' (C)

LAT:40.326953
LON:-104.348914

N 88°41'58" W
2633.82' (C)

N 03°38'54" W 5194.53' (M)

S 03°51'39" E 10909'

N 03°43'47" W 2644.15' (M)

SURFACE LOCATION
GROUND ELEVATION= 4544.9'
LATITUDE= 40.348242°
LONGITUDE= -104.353727°
1/4 1/4: NE1/4 NW1/4

ENTRY POINT
LATITUDE= 40.347568°
LONGITUDE= -104.357437°
1/4 1/4: NW1/4 NW1/4

BOTTOM HOLE LOCATION
LATITUDE= 40.317667°
LONGITUDE= -104.355306°
1/4 1/4: NW1/4 NW1/4

SE COR.
SEC. 8, T4N, R62W
FOUND 3" ALUM. CAP
L.S. NO. 4845
LAT:40.319446
LON:-104.338980

N 88°11'46" W 5277.94' (M)

MATCH LINE
SEE SHEET 3

WELL BORE CONTINUES
INTO SECTION 17

CERTIFICATE OF SURVEYOR:

THIS IS TO CERTIFY THAT THE ABOVE PLAT WAS PREPARED FROM FIELD NOTES OF ACTUAL SURVEY MADE BY ME OR UNDER MY SUPERVISION AND THAT THE SAME ARE TRUE AND CORRECT TO THE BEST OF MY KNOWLEDGE AND BELIEF. THIS CERTIFICATE DOES NOT REPRESENT A LAND SURVEY PLAT OR IMPROVEMENT SURVEY PLAT AS DEFINED BY C.R.S. 38-5-102 AND CANNOT BE RELIED UPON TO DETERMINE OWNERSHIP.

Jacob I. Dunham
PROFESSIONAL LAND SURVEYOR
COLORADO REGISTRATION NUMBER 18433
11/2/15

NEAREST CULTURAL ITEMS:

BUILDING: 5280+
BUILDING UNIT: 5280+
HIGH OCCUPANCY BUILDING UNIT: 5280+
DESIGNATED OUTSIDE ACTIVITY AREA: 5280+
PUBLIC ROAD: 5280+
ABOVE GROUND UTILITY: 5280+
RAILROAD: 5280+
PROPERTY LINE: ±280' N

NOTES:

1. ▲ INDICATES FOUND SECTION CORNER
2. ● INDICATES CALCULATED CORNER
3. DRAWING LATITUDE AND LONGITUDE COORDINATES ARE NAD 83 (2011)(EPOCH:2010)
4. ELEVATION BASED ON NAVD88 (GEOID12B)
5. BASIS OF BEARING DERIVED FROM COLORADO COORDINATE SYSTEM 1983 NORTH ZONE UNLESS OTHERWISE NOTED.
6. ALL MEASURED DISTANCES ARE GRID.
7. COMBINED SCALE FACTOR: .99974487
8. OPERATOR: ROB WILSON / PDOP = 1.4
9. SEE ADDENDUM TO WELL LOCATION CERTIFICATE FOR EXISTING IMPROVEMENTS WITHIN 500' OF THE WELL PAD.
10. WELL FOOTAGES ARE MEASURED AT RIGHT ANGLES TO THE SECTION LINES.

Proposed Spacing Unit Map

November 23, 2015

Page 2

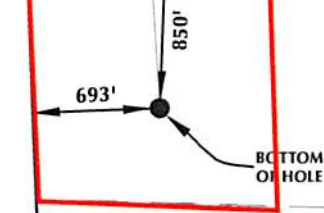
T4N, R62W

NW COR.
SEC. 17, T4N, R62W
FOUND 2 1/2" ALUM. CAP
L.S. NO. 7242
LAT:40.320091
LON:-104.357890

N 88°11'46" W 5277.94' (M)
LAT:40.319769
LON:-104.348435

NE COR.
SEC. 17, T4N, R62W
FOUND 3" ALUM. CAP
L.S. NO. 4845
LAT:40.319446
LON:-104.338980

MATCH LINE
SEE SHEET 2



LAT:40.312579
LON:-104.357587

N 02°30'07" W 5475.43' (M)

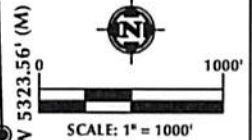
N 88°59'52" W 2618.75' (C)

17

LAT:40.312360
LON:-104.348201

N 88°59'52" W 2618.75' (C)

LAT:40.312141
LON:-104.338815



N 01°44'29" W 5323.56' (M)

SURFACE LOCATION
GROUND ELEVATION= 4544.9'
LATITUDE= 40.348242°
LONGITUDE= -104.353727°
1/4 1/4: NE1/4 NW1/4

ENTRY POINT
LATITUDE= 40.347568°
LONGITUDE= -104.357437°
1/4 1/4: NW1/4 NW1/4

BOTTOM HOLE LOCATION
LATITUDE= 40.317667°
LONGITUDE= -104.355306°
1/4 1/4: NW1/4 NW1/4

N 02°07'37" W 2699.69' (C)

LAT:40.304952
LON:-104.347968

N 89°48'44" W 5198.09' (M)

SW COR.
SEC. 17, T4N, R62W
FOUND 2 1/2" ALUM. CAP
L.S. NO. 17492
LAT:40.305067
LON:-104.357285

SE COR.
SEC. 17, T4N, R62W
FOUND 2 1/2" ALUM. CAP
L.S. NO. 7242
LAT:40.304835
LON:-104.338650

CERTIFICATE OF SURVEYOR:

THIS IS TO CERTIFY THAT THE ABOVE PLAT WAS PREPARED FROM FIELD NOTES OF ACTUAL SURVEY MADE BY ME OR UNDER MY SUPERVISION AND THAT THE SAME ARE TRUE AND CORRECT TO THE BEST OF MY KNOWLEDGE AND BELIEF. THIS CERTIFICATE DOES NOT REPRESENT A LAND SURVEY PLAT OR IMPROVEMENT SURVEY PLAT AS DEFINED BY C.R.S. 38-5-302 AND CANNOT BE RELIED UPON TO DETERMINE OWNERSHIP.

Jaed I. Dunham
JAED I. DUNHAM
PROFESSIONAL LAND SURVEYOR
COLORADO REGISTRATION NUMBER 18430
11/2/15

NEAREST CULTURAL ITEMS:

BUILDING: 5280+
BUILDING UNIT: 5280+
HIGH OCCUPANCY BUILDING UNIT: 5280+
DESIGNATED OUTSIDE ACTIVITY AREA: 5280+
PUBLIC ROAD: 5280+
ABOVE GROUND UTILITY: 5280+
RAILROAD: 5280+
PROPERTY LINE: ±280' N

NOTES:

- ▲ INDICATES FOUND SECTION CORNER
- INDICATES CALCULATED CORNER
- DRAWING LATITUDE AND LONGITUDE COORDINATES ARE NAD 83 (2011)(EPOCH:2010)
- ELEVATION BASED ON NAVD88 (GEOID12B)
- BASIS OF BEARING DERIVED FROM COLORADO COORDINATE SYSTEM 1983 NORTH ZONE UNLESS OTHERWISE NOTED.
- ALL MEASURED DISTANCES ARE GRID.
- COMBINED SCALE FACTOR: .99974487
- OPERATOR: ROB WILSON / PDOP = 1.4
- SEE ADDENDUM TO WELL LOCATION CERTIFICATE FOR EXISTING IMPROVEMENTS WITHIN 500' OF THE WELL PAD.
- WELL FOOTAGES ARE MEASURED AT RIGHT ANGLES TO THE SECTION LINES.

Proposed Spacing Unit Map

November 23, 2015
Page 3