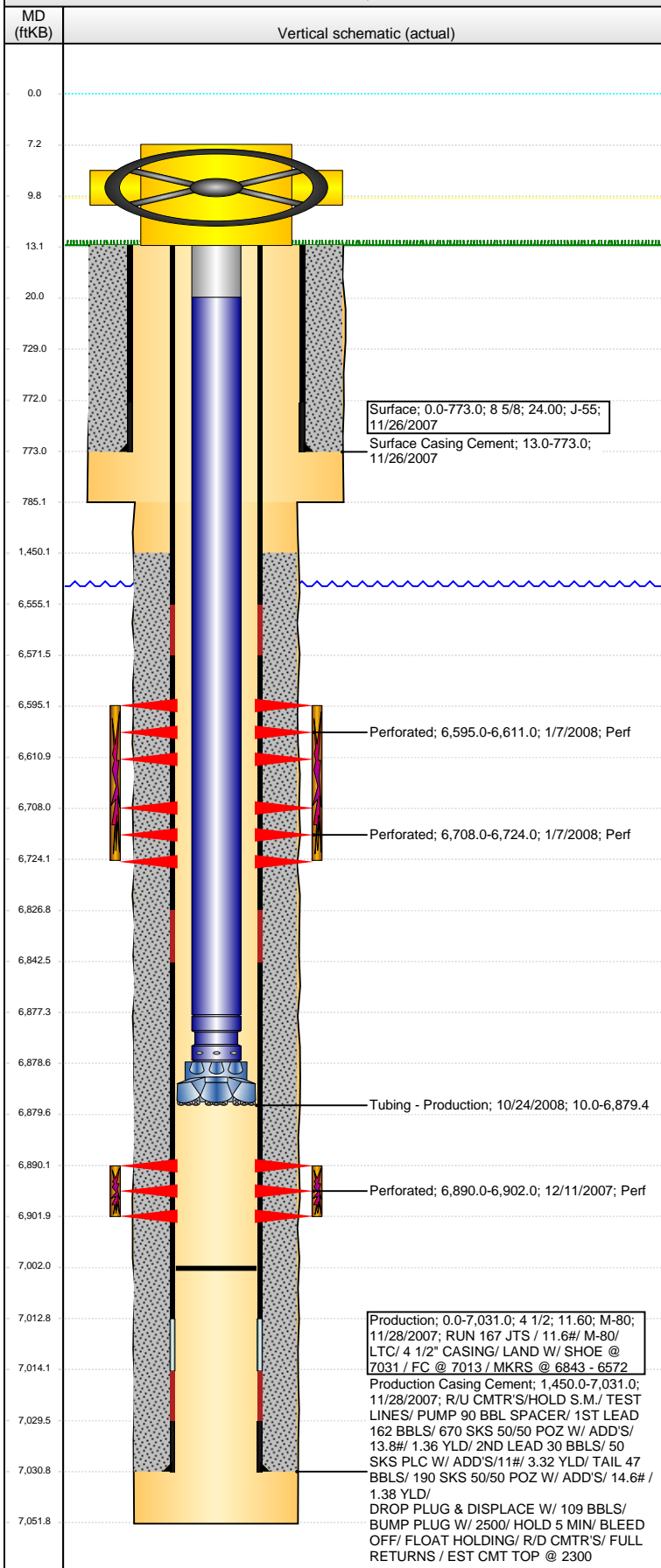


Well Name: LARSON A25-06X

DEVIATED - ORIGINAL HOLE, 2/9/2016 3:59:39 PM



Well Header									
API 05-123-26586		Business Unit DJ BASIN		District 15		Well Config DEVIATED			
Original KB Elevation (ft) 4,645.00		KB - GL / MSL (ftKB) 13.00		Spud Date 11/25/2007		P & A Date			
Comment PLUG AND ABANDON LARSON A25-6 WELL PRIOR TO COMPLETING THE LARSON A25-6X.									
Directions To Well WCR 59 & 66, EAST 2.5/10, SOUTH 2.5/10, EAST INTO LOCATION.									
Congressional Location									
Quarter 1	Quarter 2	Quarter 3 SE	Quarter 4 NW	Section 25	Township 6 N	Twnshp N...	Range 64	Rng E/W Dir W	
Bottom Hole Location									
North-South Distance (ft) 2,105.0		From N or S Line FNL		East-West Distance (ft) 1,880.0		From E or W Line FWL			
Plug Back Total Depths									
Date		Depth (ftKB)		Method		Com			
10/24/2008		7,002.0		TAG					
Wellbore Sections									
Section Des			Size (in)		Act Top, MD (ftKB)		Act Btm, MD (ftKB)		
Surface			12 1/4		13.0		785.0		
Production			7 7/8		785.0		7,052.0		
Zone Statuses									
Zone Name		Status Date	Status	Fluid Type	Job	Prod Method			
NIOBRARA		3/10/2008	PR		DRILLING/CO...				
CODELL		3/10/2008	PR		DRILLING/CO...				
Casing Strings									
Surface, 773.0ftKB									
Casing Description		Run Date	OD (in)	Wt/Len (l...	Grade	Top, MD (ft...	MD (ftKB)		
Surface		11/26/2007	8 5/8	24.00	J-55	0.0	773.0		
Production, 7,031.0ftKB									
Casing Description		Run Date	OD (in)	Wt/Len (l...	Grade	Top, MD (ft...	MD (ftKB)		
Production		11/28/2007	4 1/2	11.60	M-80	0.0	7,031.0		
Cement									
Description					Top Depth (ftKB)		Bottom Depth (ftKB)		
Surface Casing Cement					13.0		773.0		
Description					Top Depth (ftKB)		Bottom Depth (ftKB)		
Production Casing Cement					1,450.0		7,031.0		
Tubing Strings									
Tubing Description		Run Date	String...	ID (in)	Wt (lb/ft)	Grade	Len (ft)	Set De...	
Tubing - Production		10/24/2008	2 3/8	1.995	4.70	J-55	6,869.43		
Tubing Components									
Item Des		OD (in)	Wt (lb/ft)	Grade	Jts	Len (ft)	Btm (ftKB)	Btm (TVD) (ftKB)	
Tubing Pup Joint		2 3/8	4.70	J-55	1	10.00	20.0		
Tubing		2 3/8	4.70	J-55	222	6,857.33	6,877.3		
Pump Seating Nipple		2 3/8			1	1.20	6,878.5		
Blade Bit		3 7/8			1	0.90	6,879.4		
Perforation Data									
Zone		Bnch/St g	Entered Shot Total	Top (ftKB)		Btm (ftKB)		Date	
NIOBRARA, ORIGINAL HOLE		A	64	6,595.00		6,611.00		1/7/2008	
NIOBRARA, ORIGINAL HOLE		B	64	6,708.00		6,724.00		1/7/2008	
CODELL, ORIGINAL HOLE			48	6,890.00		6,902.00		12/11/2007	
Stimulations & Treatments									
Date		Zone			Primary Job Type				
1/7/2008		CODELL, ORIGINAL HOLE			DRILLING/COMPLETION - ORIGINAL				
Technical Result			Tech Result Details			Tech Result Note			
Success			According to Plan						
Comment FRAC THE CODELL - LOST SAND FOR 1000 GALS BEFORE ABLE TO RESUME SAND - NO OTHER PROBLEMS TO REPORT									
Date		Zone			Primary Job Type				
1/7/2008		NIOBRARA, ORIGINAL HOLE			DRILLING/COMPLETION - ORIGINAL				
Technical Result			Tech Result Details			Tech Result Note			
Success			According to Plan						
Comment FRAC THE NIOBRARA - NO PROBLEMS TO REPORT									

Well Name: LARSON A25-06X

DEVIATED - ORIGINAL HOLE, 2/9/2016 3:59:42 PM

Other In Hole

Run Date	Des	OD (in)	Top (ftKB)	Btm (ftKB)

Logs

Date	Type	Top, MD (ftKB)	Btm, MD (ftKB)
12/5/2007	Cement Bond	1,300.0	6,986.0
3/31/2014	GYRO	13.0	6,800.0

