

WELL LOCATION PLAT T7N, R80W, 6th P.M.

SandRidge Exploration & Production

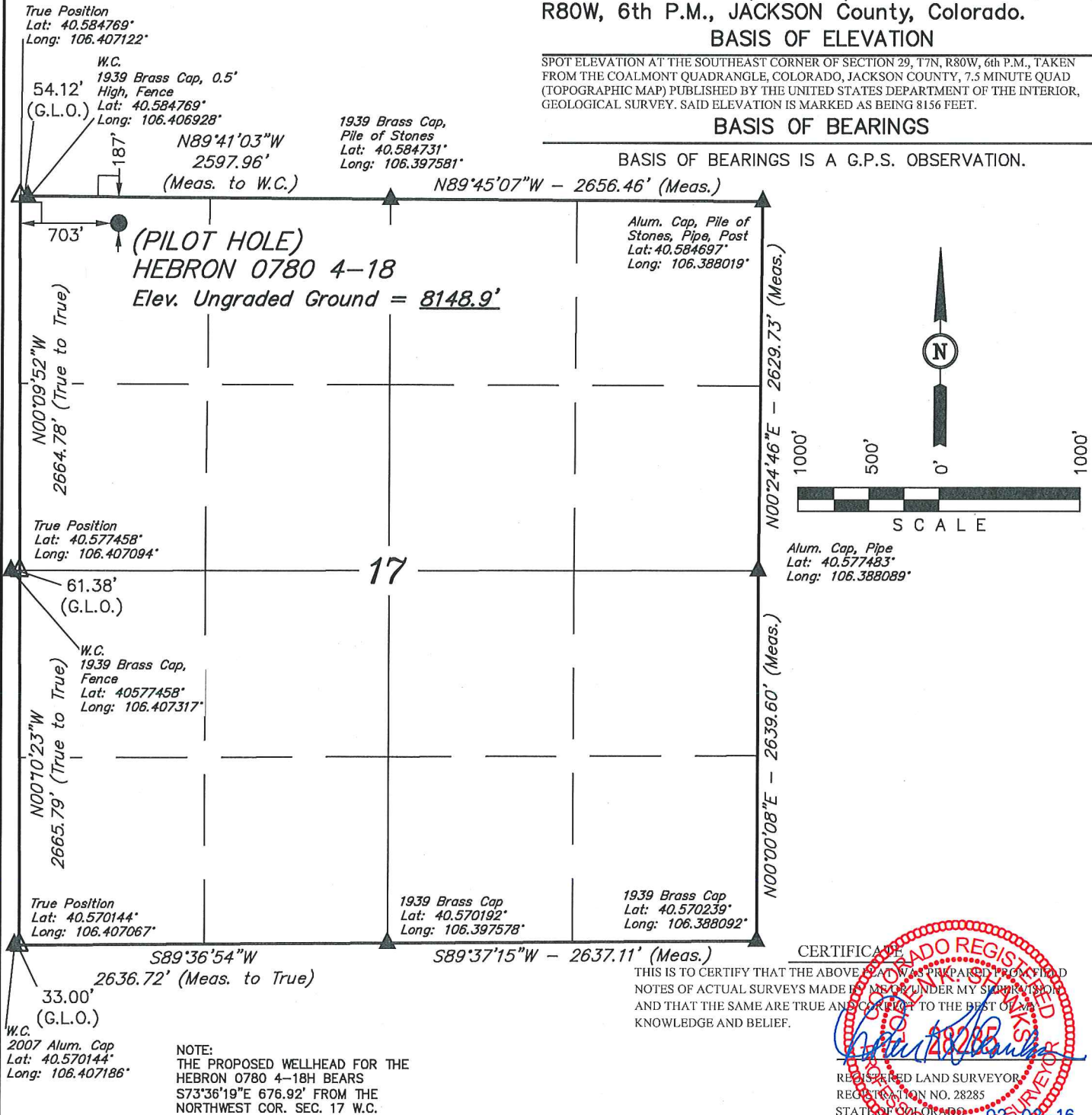
Well location, HEBRON 0780 4-18, located as shown in the NW 1/4 NW 1/4 of Section 17, T7N, R80W, 6th P.M., JACKSON County, Colorado.

BASIS OF ELEVATION

SPOT ELEVATION AT THE SOUTHEAST CORNER OF SECTION 29, T7N, R80W, 6th P.M., TAKEN FROM THE COALMONT QUADRANGLE, COLORADO, JACKSON COUNTY, 7.5 MINUTE QUAD (TOPOGRAPHIC MAP) PUBLISHED BY THE UNITED STATES DEPARTMENT OF THE INTERIOR, GEOLOGICAL SURVEY. SAID ELEVATION IS MARKED AS BEING 8156 FEET.

BASIS OF BEARINGS

BASIS OF BEARINGS IS A G.P.S. OBSERVATION.



LEGEND:

- = 90° SYMBOL
- = PROPOSED WELLHEAD.
- ▲ = SECTION CORNERS LOCATED. (NAD 83)
- △ = SECTION CORNERS RE-ESTABLISHED. (Not Set on Ground.) (NAD 83)

PDOP = 1.3

NAD 83 (PILOT HOLE)
LATITUDE = 40°35'03.28" (40.584244)
LONGITUDE = 106°24'16.53" (106.404592)
NAD 27 (PILOT HOLE)
LATITUDE = 40°35'03.36" (40.584267)
LONGITUDE = 106°24'14.42" (106.404006)
STATE PLANE NAD 83 (CO. NORTH)
N: 1456963.28 E: 2748750.91
STATE PLANE NAD 27 (CO. NORTH)
N: 456961.18 E: 1748907.17

UINTAH ENGINEERING & LAND SURVEYING

85 SOUTH 200 EAST - VERNAL, UTAH 84078

(435) 789-1017

SCALE 1" = 1000'	DATE SURVEYED: 11-19-15	DATE DRAWN: 02-02-16
PARTY CHAD MEIERS, C.J. C.D.L.	REFERENCES G.L.O. PLAT	
WEATHER COLD	FILE SandRidge Exploration & Production	