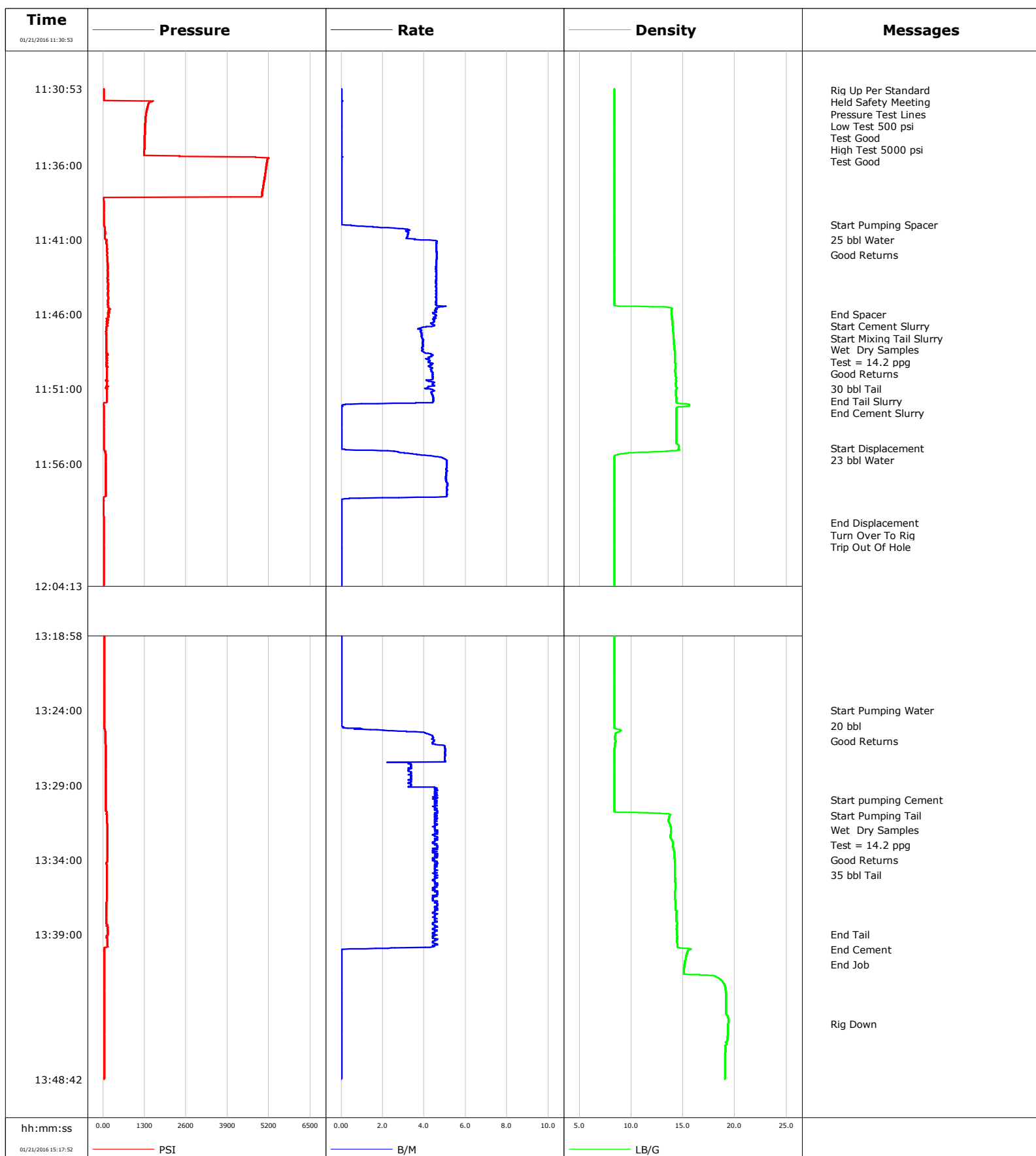


**Well** Douglas 05-09H  
**Field** Wildcat  
**Engineer** Jordan Moreland / Stacy Terry  
**Country**

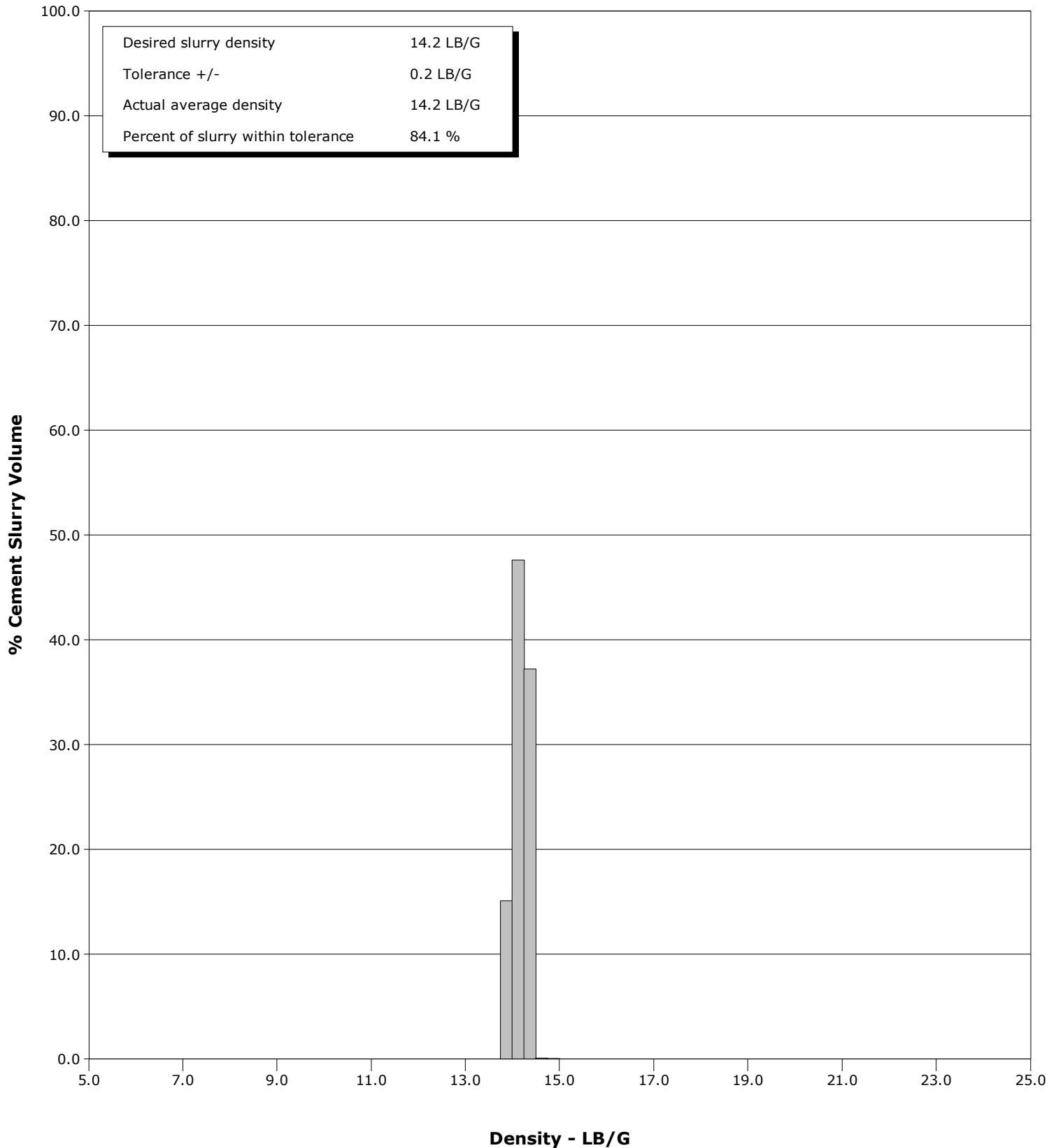
**Client** Sandridge Energy  
**SIR No.** D5VO-01047  
**Job Type**  
**Job Date**



**Well** Douglas 05-09H  
**Field** Wildcat  
**Engineer** Jordan Moreland / Stacy Terry  
**Country**

**Client** Sandridge Energy  
**SIR No.** D5VO-01047  
**Job Type**  
**Job Date**

Cement Slurry - 01/21/2016 11:46:00 to 01/21/2016 11:52:00



# Cementing Service Report

				Customer Sandridge Energy			Job Number D5VO-01047		
Well Douglas 05-09H			Location (legal)		Schlumberger Location			Job Start Jan/21/2016	
Field Wildcat		Formation Name/Type		Deviation deg	Bit Size in		Well MD ft		
County Jackson		State/Province Colorado		BHP psi	BHST degF		BHCT degF		
Well Master 0631600905		API/UWI					Pore Press. Gradient lb/gal		
Rig Name Xtreme 20	Drilled For Oil	Service Via Land	Casing/ Liner						
			Depth, ft	Size, in	Weight, lb/ft	Grade		Thread	
Offshore Zone	Well Class New	Well Type Development							
Drilling Fluid Type		Max. Density lb/gal	Plastic Viscosity cP	Tubing/Drill Pipe					
				T/D	Depth, ft	Size, in	Weight, lb/ft	Grade	
Service Line Cementing	Job Type			D	1400.0	5.0	19.5	X95	
					0.0	0.0	0.0	N/A	
Max. Allowed Tub. Press psi	Max. Allowed Ann. Press psi	WH Connection	Perforations/Open Hole						
			Top, ft	Bottom, ft	shot/ft	No. of Shots		Total Interval	
<b>Service Instructions</b> Rate And Density Checked Plug #1 25 bbl Water 112 sks 14.2 Tail Yield - 1.5 ft3/sk Plug #2 20 bbl Water 131 sks 14.2 Tail Yield - 1.5 ft3/sk			ft	ft				ft	
			ft	ft				Diameter	
			ft	ft				in	
			Treat Down Drill Pipe	Displacement bbl	Packer Type		Packer Depth ft		
			Tubing Vol. 24.0 bbl	Casing Vol. bbl	Annular Vol. bbl		Openhole Vol. 410.0 bbl		
Casing/Tubing Secured <input checked="" type="checkbox"/>		1 Hole Vol. Circulated prior to Cement <input type="checkbox"/>		Casing Tools			Squeeze Job		
Lift Pressure psi				Shoe Type			Squeeze Type		
Pipe Rotated <input type="checkbox"/>		Pipe Reciprocated <input type="checkbox"/>		Shoe Depth ft			Tool Type		
No. Centralizers		Top Plugs	Bottom Plugs	Stage Tool Type			Tool Depth ft		
Cement Head Type			Stage Tool Depth ft			Tail Pipe Size in			
Job Scheduled For Jan/21/2016		Arrived on Location Jan/21/2016	Leave Location Jan/21/2016	Collar Type			Tail Pipe Depth ft		
				Collar Depth ft			Sqz. Total Vol. bbl		
Date	Time 24-hr clock	Treating Pressure PSI	Flow Rate B/M	Density LB/G	Volume BBL	Message			
01/21/2016	11:30:53	28	0.0	8.38	0.0				
01/21/2016	11:31:00	25	0.0	8.38	0.0	Rig Up Per Standard			
01/21/2016	11:32:53	1330	0.0	8.38	0.0				
01/21/2016	11:34:53	1292	0.0	8.38	0.0				
01/21/2016	11:36:53	5064	0.0	8.38	0.0				
01/21/2016	11:38:53	25	0.0	8.38	0.0				
01/21/2016	11:40:00	23	0.0	8.38	0.0	Start Pumping Spacer			
01/21/2016	11:40:53	62	3.2	8.38	2.3				
01/21/2016	11:41:00	73	3.5	8.38	2.6	25 bbl Water			
01/21/2016	11:42:00	135	4.6	8.38	7.2	Good Returns			
01/21/2016	11:42:53	141	4.6	8.38	11.2				
01/21/2016	11:44:53	163	4.6	8.38	20.4				
01/21/2016	11:46:00	172	4.5	13.89	25.5	End Spacer			
01/21/2016	11:46:53	97	4.0	14.00	29.5				
01/21/2016	11:47:00	102	3.7	14.01	29.9	Start Mixing Tail Slurry			
01/21/2016	11:48:00	100	3.9	14.14	33.8	Wet Dry Samples			
01/21/2016	11:48:53	99	4.2	14.22	37.4				
01/21/2016	11:49:00	135	4.1	14.22	37.9	Test = 14.2 ppg			
01/21/2016	11:50:00	120	4.4	14.24	42.2	Good Returns			
01/21/2016	11:50:53	130	4.2	14.35	46.0				
01/21/2016	11:51:00	145	4.1	14.40	46.5	30 bbl Tail			

Well			Field	Job Start		Customer	Job Number
Douglas 05-09H			Wildcat	Jan/21/2016		Sandridge Energy	D5VO-01047
Date	Time 24-hr clock	Treating Pressure PSI	Flow Rate B/M	Density LB/G	Volume BBL	Message	
01/21/2016	11:52:53	19	0.0	14.36	51.0		
01/21/2016	11:54:53	18	0.0	14.59	51.0		
01/21/2016	11:55:00	18	0.0	14.59	51.0	Start Displacement	
01/21/2016	11:56:53	82	5.0	8.37	59.0		
01/21/2016	11:58:53	13	0.0	8.38	66.3		
01/21/2016	12:00:00	22	0.0	8.38	66.3	End Displacement	
01/21/2016	12:00:53	23	0.0	8.38	66.3		
01/21/2016	12:02:53	24	0.0	8.38	66.3		
01/21/2016	12:04:53	24	0.0	8.37	66.3		
01/21/2016	12:06:53	25	0.0	8.37	66.3		
01/21/2016	12:08:53	26	0.0	8.37	66.3		
01/21/2016	12:10:53	27	0.0	8.37	66.3		
01/21/2016	12:12:53	28	0.0	8.37	66.3		
01/21/2016	12:14:53	29	0.0	8.37	66.3		
01/21/2016	12:16:53	29	0.0	8.38	66.3		
01/21/2016	12:18:53	29	0.0	8.38	66.3		
01/21/2016	12:20:53	30	0.0	8.38	66.3		
01/21/2016	12:22:53	30	0.0	8.38	66.3		
01/21/2016	12:24:53	30	0.0	8.38	66.3		
01/21/2016	12:26:53	31	0.0	8.38	66.3		
01/21/2016	12:28:53	32	0.0	8.38	66.3		
01/21/2016	12:30:53	32	0.0	8.38	66.3		
01/21/2016	12:32:53	32	0.0	8.38	66.3		
01/21/2016	12:34:53	32	0.0	8.38	66.3		
01/21/2016	12:36:53	33	0.0	8.38	66.3		
01/21/2016	12:38:53	33	0.0	8.38	66.3		
01/21/2016	12:40:53	33	0.0	8.38	66.3		
01/21/2016	12:42:53	33	0.0	8.38	66.3		
01/21/2016	12:44:53	33	0.0	8.38	66.3		
01/21/2016	12:46:53	33	0.0	8.38	66.3		
01/21/2016	12:48:53	33	0.0	8.38	66.3		
01/21/2016	12:50:53	33	0.0	8.38	66.3		
01/21/2016	12:52:53	33	0.0	8.38	66.3		
01/21/2016	12:54:53	34	0.0	8.38	66.3		
01/21/2016	12:56:53	34	0.0	8.38	66.3		
01/21/2016	12:58:53	33	0.0	8.38	66.3		
01/21/2016	13:00:53	34	0.0	8.38	66.3		
01/21/2016	13:02:53	34	0.0	8.38	66.3		
01/21/2016	13:04:53	34	0.0	8.38	66.3		
01/21/2016	13:06:53	34	0.0	8.38	66.3		
01/21/2016	13:08:53	34	0.0	8.38	66.3		
01/21/2016	13:10:53	35	0.0	8.38	66.3		
01/21/2016	13:12:53	34	0.0	8.38	66.3		
01/21/2016	13:14:53	34	0.0	8.38	66.3		
01/21/2016	13:16:53	34	0.0	8.38	66.3		
01/21/2016	13:18:53	34	0.0	8.38	66.3		
01/21/2016	13:20:53	34	0.0	8.38	66.3		
01/21/2016	13:22:53	33	0.0	8.38	66.3		
01/21/2016	13:24:00	35	0.0	8.38	66.3	Start Pumping Water	
01/21/2016	13:24:53	35	0.0	8.38	66.3		
01/21/2016	13:25:00	35	0.0	8.38	66.3	20 bbl	
01/21/2016	13:26:00	74	4.5	8.49	69.2	Good Returns	
01/21/2016	13:26:53	90	5.0	8.38	1.8		
01/21/2016	13:28:53	91	3.2	8.38	9.5		

Well			Field	Job Start		Customer	Job Number
Douglas 05-09H			Wildcat	Jan/21/2016		Sandridge Energy	D5VO-01047
Date	Time 24-hr clock	Treating Pressure PSI	Flow Rate B/M	Density LB/G	Volume BBL	Message	
01/21/2016	13:30:53	111	4.6	12.73	18.3		
01/21/2016	13:31:00	113	4.6	13.75	18.8	Start Pumping Tail	
01/21/2016	13:32:00	130	4.6	13.85	23.3	Wet Dry Samples	
01/21/2016	13:32:53	129	4.4	14.04	27.4		
01/21/2016	13:33:00	129	4.5	14.02	27.9	Test = 14.2 ppg	
01/21/2016	13:34:00	130	4.4	14.21	32.4	Good Returns	
01/21/2016	13:34:53	113	4.6	14.23	36.4		
01/21/2016	13:35:00	113	4.5	14.23	37.0	35 bbl Tail	
01/21/2016	13:36:53	104	4.5	14.26	45.5		
01/21/2016	13:38:53	142	4.4	14.41	54.6		
01/21/2016	13:39:00	141	4.5	14.42	55.1	End Tail	
01/21/2016	13:40:00	33	0.0	15.72	59.2	End Cement	
01/21/2016	13:40:53	39	0.0	15.16	59.2		
01/21/2016	13:41:00	38	0.0	15.14	59.2	End Job	
01/21/2016	13:42:53	37	0.0	19.12	59.2		
01/21/2016	13:44:53	38	0.0	19.36	59.2		
01/21/2016	13:45:00	38	0.0	19.35	59.2	Rig Down	
01/21/2016	13:46:53	39	0.0	19.07	59.2		
01/21/2016	13:48:53	39	0.0	19.06	59.2		
01/21/2016	13:50:53	39	0.0	19.08	59.2		
01/21/2016	13:52:53	39	0.0	19.12	59.2		
01/21/2016	13:54:53	39	0.0	19.12	59.2		
01/21/2016	13:56:53	39	0.0	19.12	59.2		
01/21/2016	13:58:53	39	0.0	19.11	59.2		
01/21/2016	14:00:53	39	0.0	19.09	59.2		
01/21/2016	14:02:53	39	0.0	19.05	59.2		
01/21/2016	14:04:53	39	0.0	19.03	59.2		
01/21/2016	14:06:53	39	0.0	19.00	59.2		
01/21/2016	14:08:53	39	0.0	18.96	59.2		
01/21/2016	14:10:53	40	0.0	18.91	59.2		
01/21/2016	14:12:53	39	0.0	18.86	59.2		
01/21/2016	14:14:53	41	0.0	18.78	59.2		
01/21/2016	14:16:53	41	0.0	18.69	59.2		
01/21/2016	14:18:53	43	0.0	18.63	59.2		
01/21/2016	14:20:53	43	0.0	18.51	59.2		
01/21/2016	14:22:53	44	0.0	18.38	59.2		
01/21/2016	14:24:53	43	0.0	18.28	59.2		
01/21/2016	14:26:53	43	0.0	18.16	59.2		
01/21/2016	14:28:53	44	0.0	18.54	59.2		
01/21/2016	14:30:53	44	0.0	17.79	59.2		
01/21/2016	14:32:53	44	0.0	17.78	59.2		
01/21/2016	14:34:53	43	0.0	17.79	59.2		
01/21/2016	14:36:53	44	0.0	17.79	59.2		
01/21/2016	14:38:53	44	0.0	17.78	59.2		
01/21/2016	14:40:53	44	0.0	17.74	59.2		
01/21/2016	14:42:53	45	0.0	17.67	59.2		
01/21/2016	14:44:53	44	0.0	17.59	59.2		
01/21/2016	14:46:53	44	0.0	17.51	59.2		
01/21/2016	14:48:53	44	0.0	17.41	59.2		
01/21/2016	14:50:53	37	0.0	17.31	59.2		
01/21/2016	14:52:53	53	0.0	9.73	59.2		
01/21/2016	14:54:53	90	0.0	8.53	59.2		
01/21/2016	14:56:53	34	0.0	8.95	59.2		
01/21/2016	14:58:53	33	0.0	8.81	59.2		

Well			Field		Job Start	Customer		Job Number
Douglas 05-09H			Wildcat		Jan/21/2016	Sandridge Energy		D5VO-01047
Date	Time 24-hr clock	Treating Pressure PSI	Flow Rate B/M	Density LB/G	Volume BBL	Message		
01/21/2016	15:02:53	103	0.0	8.57	59.2			
01/21/2016	15:04:53	34	0.0	0.01	59.2			
01/21/2016	15:06:53	99	0.0	8.39	59.2			
01/21/2016	15:08:53	40	0.0	6.61	59.2			
01/21/2016	15:10:53	36	4.2	8.46	64.3			
01/21/2016	15:12:53	49	5.6	8.40	67.0			
01/21/2016	15:14:53	43	0.0	8.42	74.1			

### Post Job Summary

Average Pump Rates, bbl/min					Volume of Fluid Injected, bbl						
Slurry	N2	Mud	Maximum Rate		Total Slurry	Mud	Spacer	N2			
Treating Pressure Summary, psi					Breakdown Fluid						
Maximum	Final 0	Average	Bump Plug to	Breakdown	Type	Volume bbl	Density lb/gal				
Avg. N2 Percent %	Designed Slurry Volume 0.0 bbl		Displacement bbl	Mix Water Temp 65 degF	Cement Circulated to Surface? <input checked="" type="checkbox"/>		Volume bbl				
					Washed Thru Perfs <input type="checkbox"/>		To ft				
Customer or Authorized Representative			Schlumberger Supervisor Jordan Moreland / Stacy Terry			Circulation Lost <input type="checkbox"/>	Job Completed <input checked="" type="checkbox"/>				
						-	-				