



# GAMMA RAY CCL

Company	ANADARKO PETROLEUM CORP.			
Well	VYNCKIER DON GU B 2			
Field	WATTENBERG			
County	WELD	State	COLORADO	
Location:	API # : 05-123-19175			Other Services
	SHL: 1552' FSL 2069' FWL			
	LAT 40.09150 LONG -104.82260			
	NE/SW			
	SEC 31	TWP 2N	RGE 66W	
Permanent Datum	GL	Elevation	4882'	Elevation
Log Measured From	KB 12'			K.B. 4894'
Drilling Measured From	KB			D.F. 4893'
				G.L. 4882'

APL #: 05-123-19175

NE/SW  
P 2N RGE 66W

Elevation
K.B. 4894'
D.F. 4893'
G.L. 4882'

1-14-2016

ONE

4020'

4011'

77/8

WATER

1.0

134 DEGR

116  
A/A

N/A	N/A
-----	-----

3812

Greeley

N.POLLOC

## JIS MORAL

To

---

---

---

We

2


--	--

--	--

--	--

1

THANK YOU FOR USING IPS!!

Sensor	Offset (ft)	Schematic	Description	Len (ft)	OD (in)	Wt (lb)
CENT	19.08					

Tool Joint	Tool Joint Length (ft)	Tool Joint Weight (lb)	Tool Joint O.D. (in)	Tool Joint Description	Tool Joint Weight (lb)	Tool Joint O.D. (in)	Tool Joint Description
HEADVOLT	16.25				2.83	2.75	
RBT	16.25						
IntTemp	14.83						
WVFS3FT	11.58				8.92	2.75	90.00
WVFCAL	11.58						
WVFS1	11.58						
WVFS2	11.58						
WVFS3	11.58						
WVFS4	11.58						
WVFS5	11.58						
WVFS6	11.58						
WVFS7	11.58						
WVFS8	11.58						
WVF5FT	10.58						
CNLSC	6.00				3.00	2.75	40.00
CNSSC	5.17						
GR	4.33						
CCL	3.64						
GR	0.90				4.33	2.75	30.00

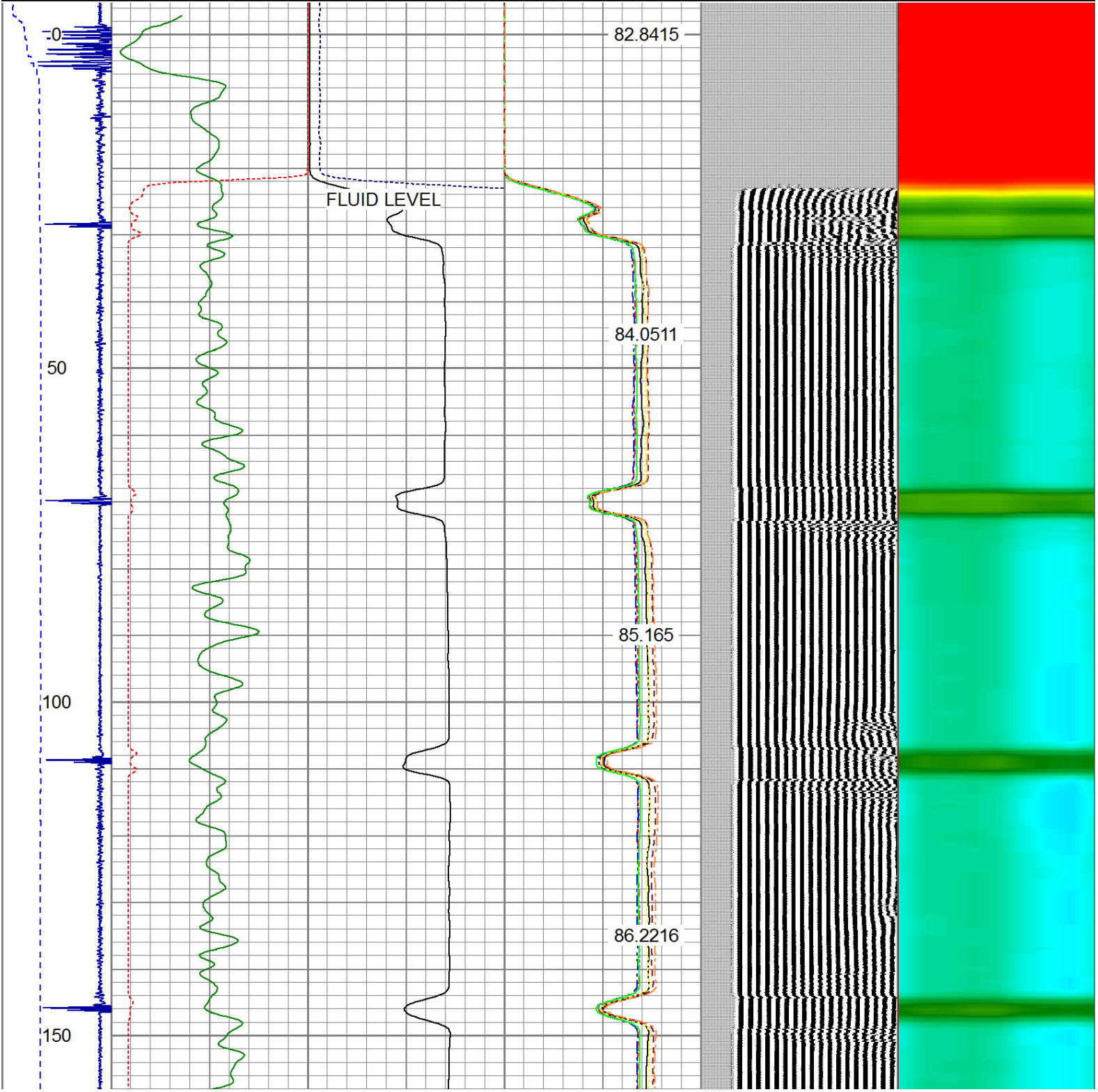
Dataset: vynckier don gu b 2.db: field/well/run1/pass4

Total Length: 19.08 ft

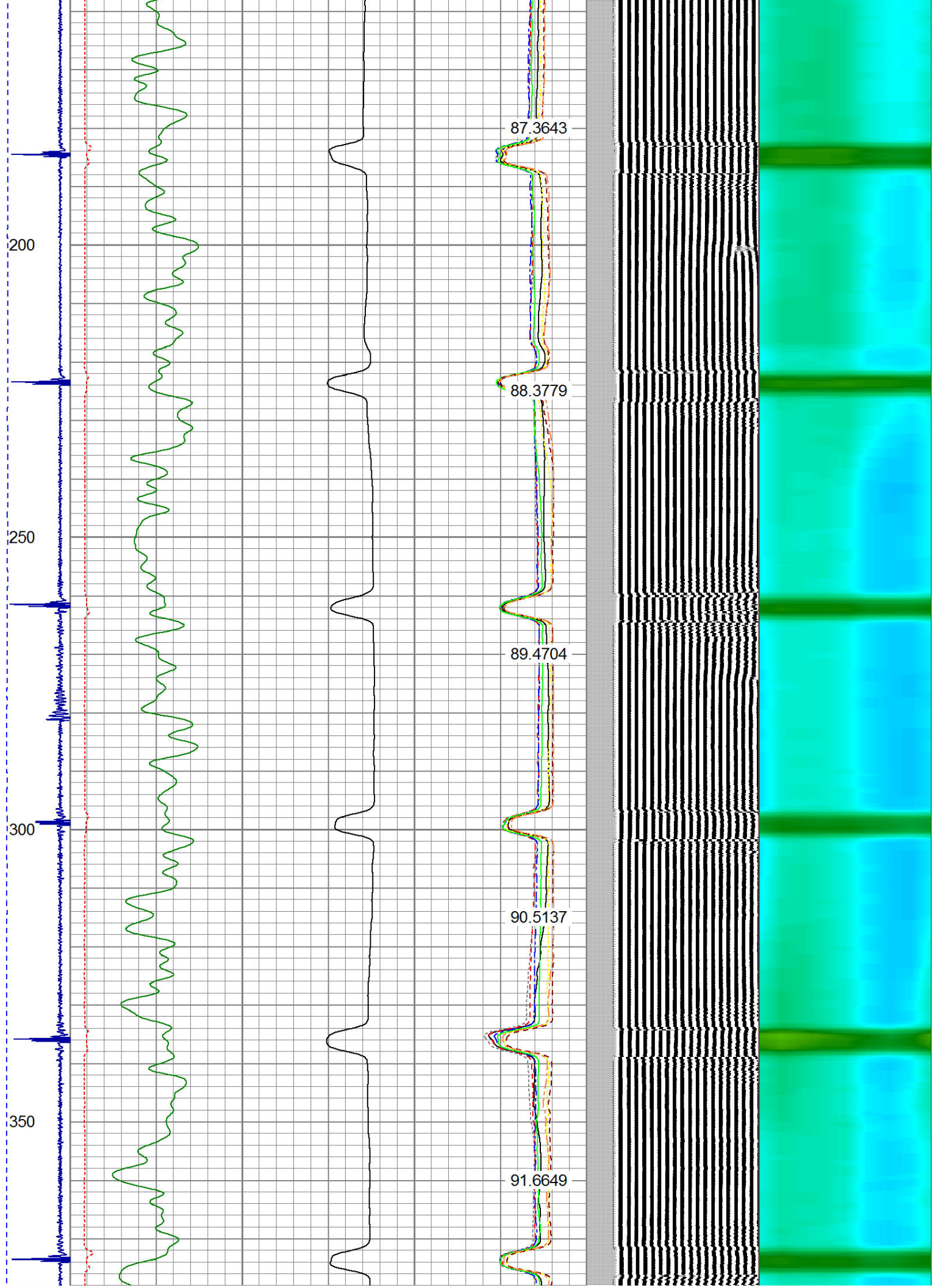
Total Weight: 160.00 lb

O.D. 2.75 in

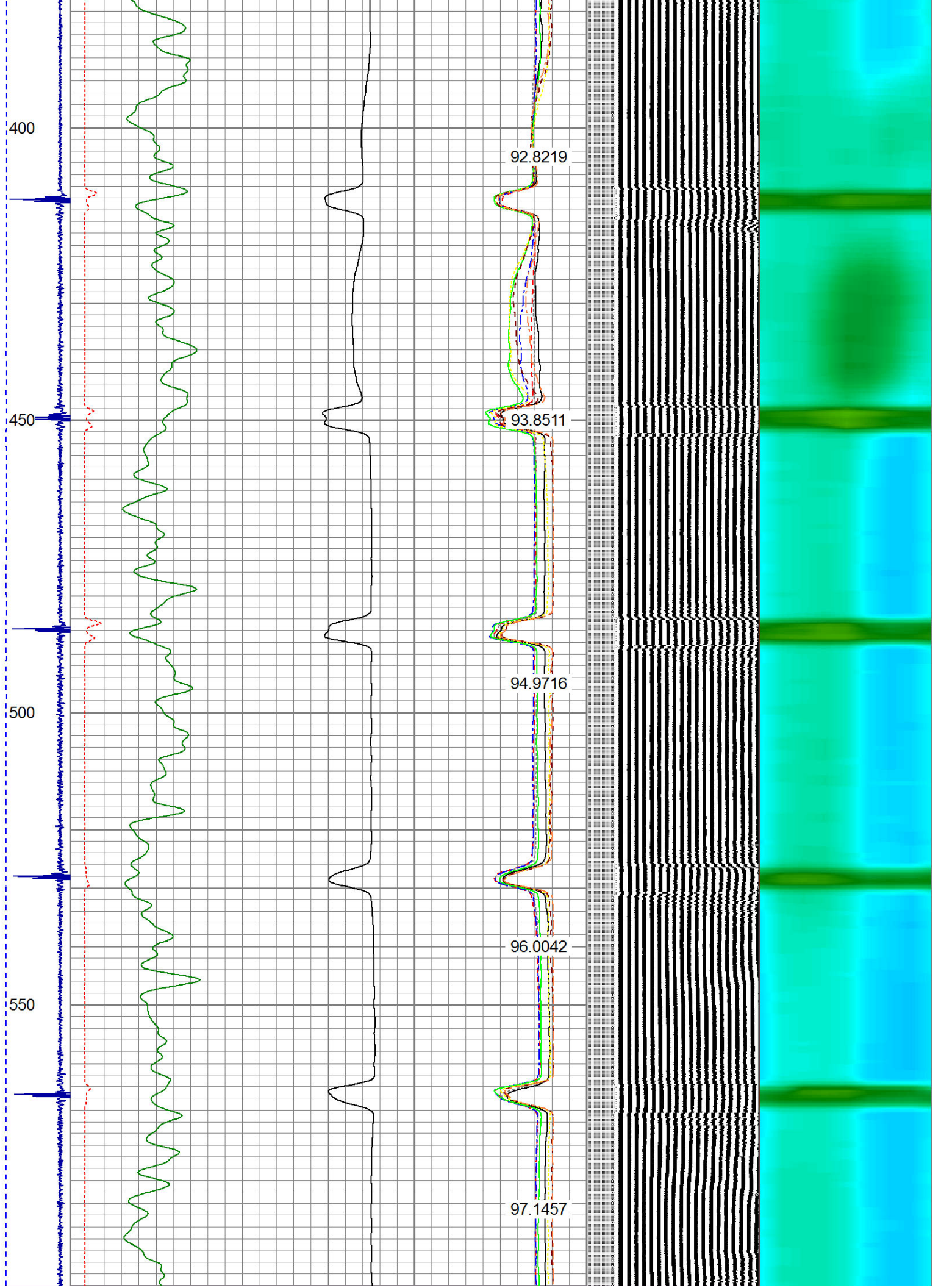
-9	CCL	1	200	TT (usec)	1000	0	AMP (mV)	100	0	AMPS1	100	200	VDL	1200	1	Cement Map	8
LSPD			0	GR (cps)	200	0	AMPx5 (mV)	20	0	AMPS2	100				1		100
(ft/min)			200	GR (cps)	400				0	AMPS3	100						
0	250								0	AMPS4	100						
									0	AMPS5	100						
									0	AMPS6	100						
									0	AMPS7	100						
									0	AMPS8	100						
										IntTemp							
										(degF)							

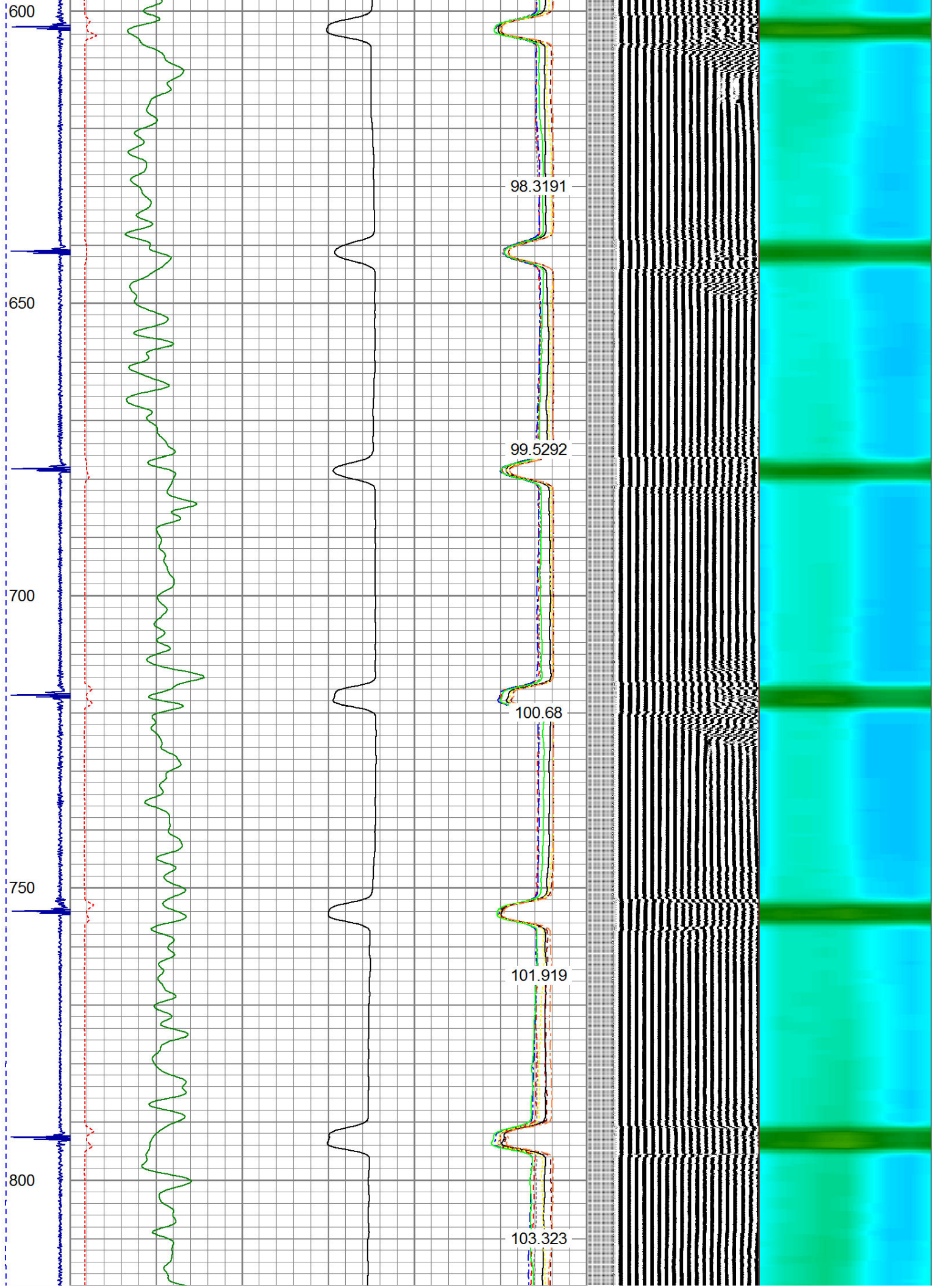




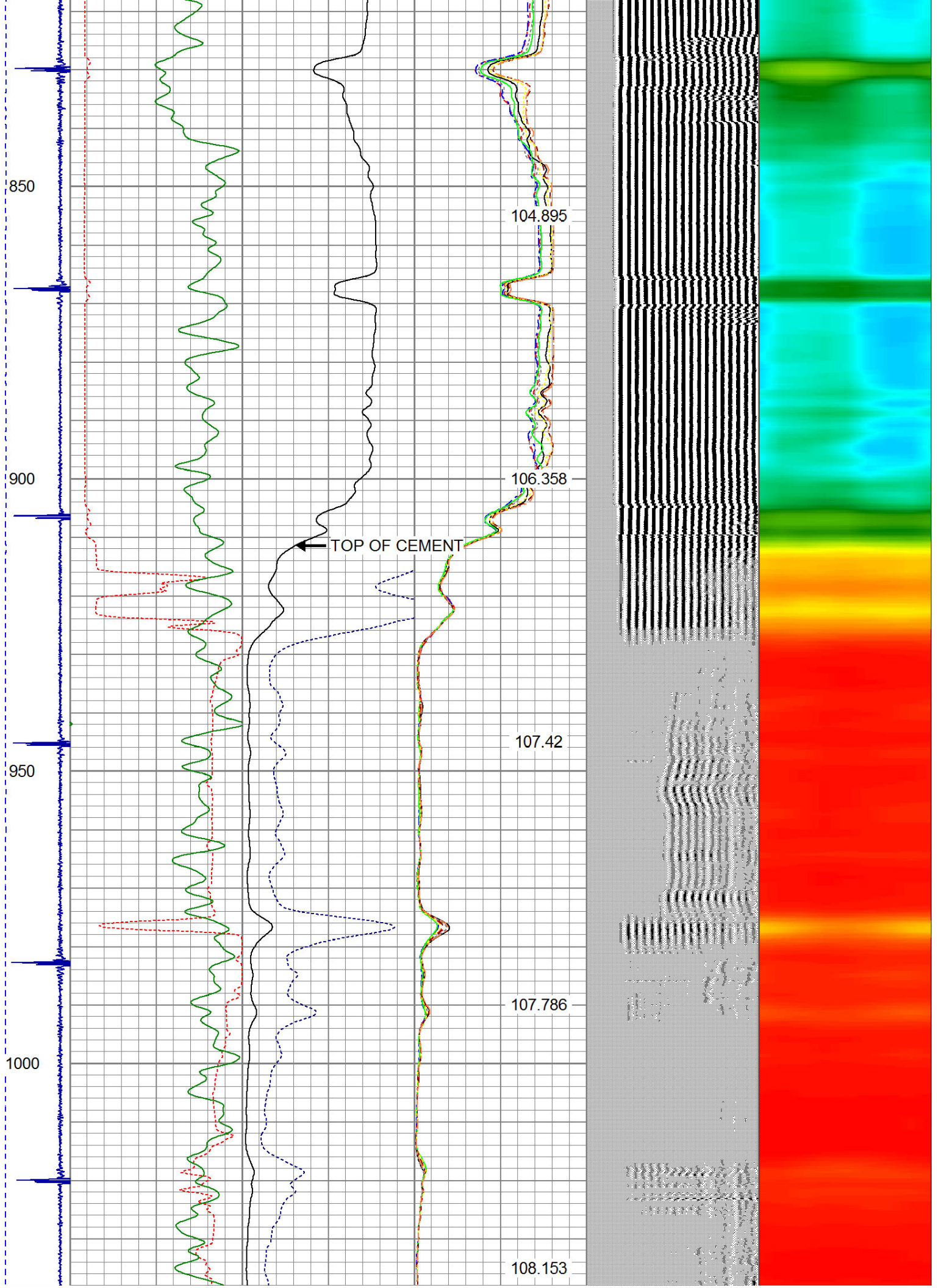














1050

1100

1150

1200

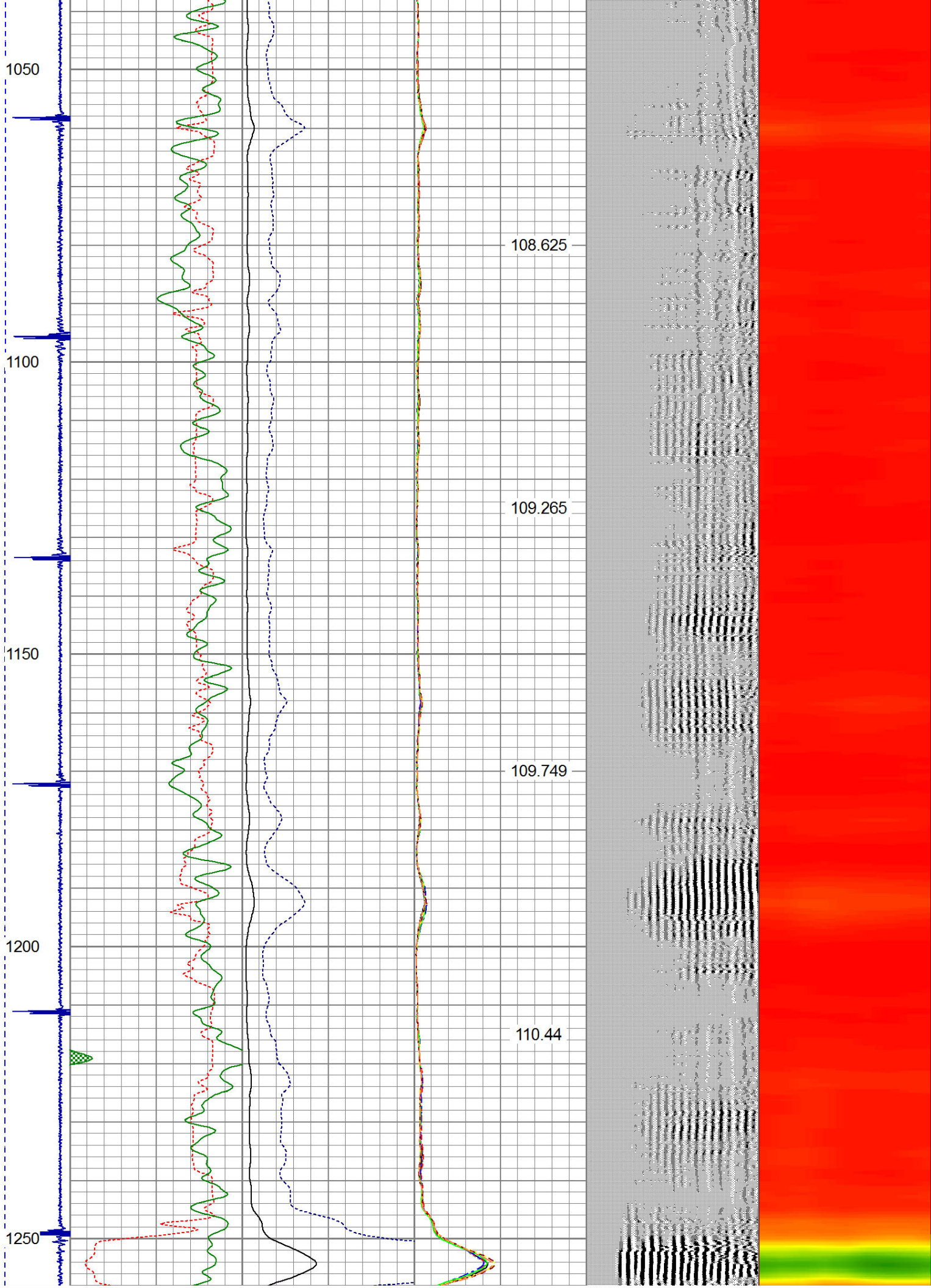
1250

108.625

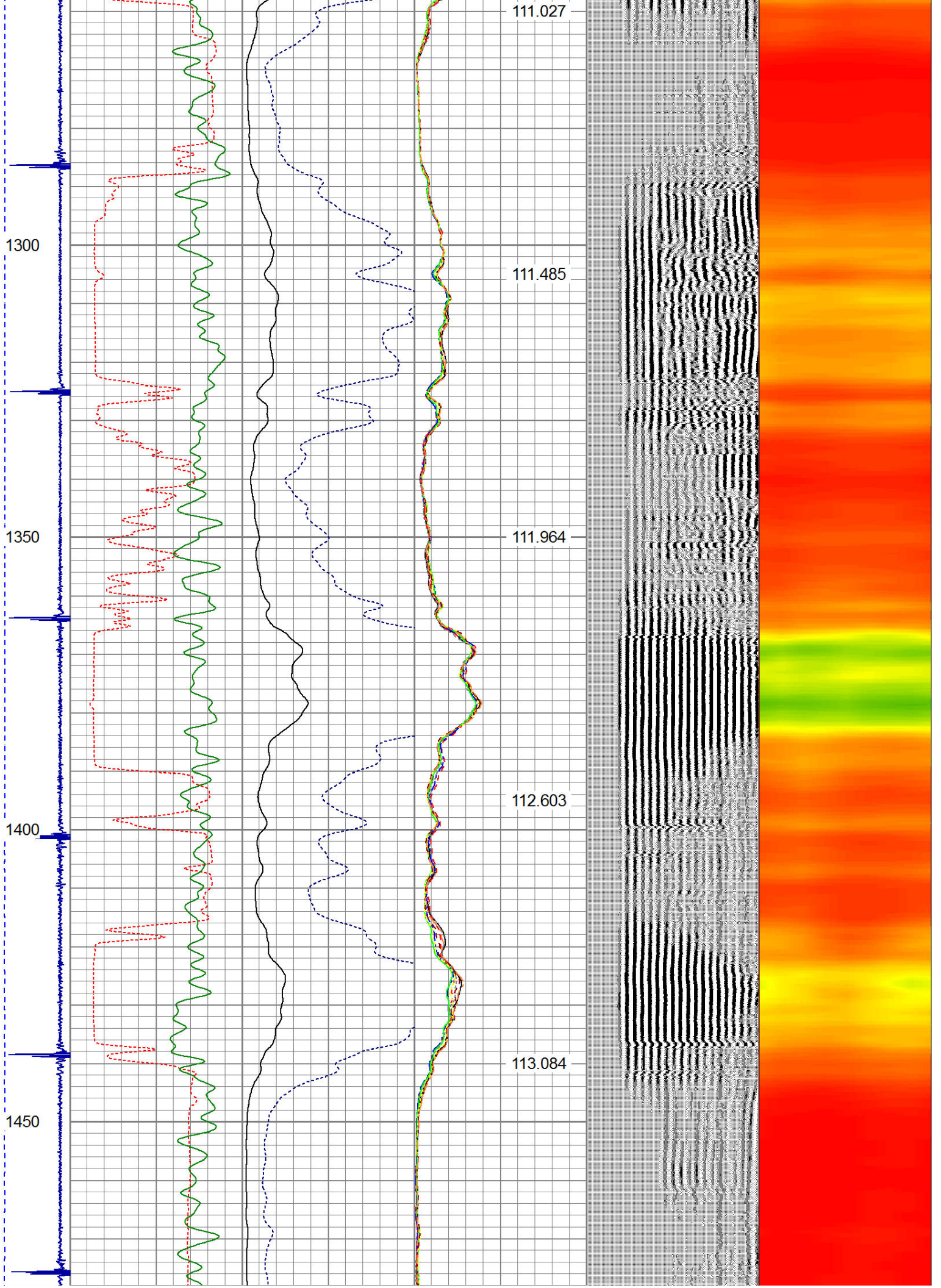
109.265

109.749

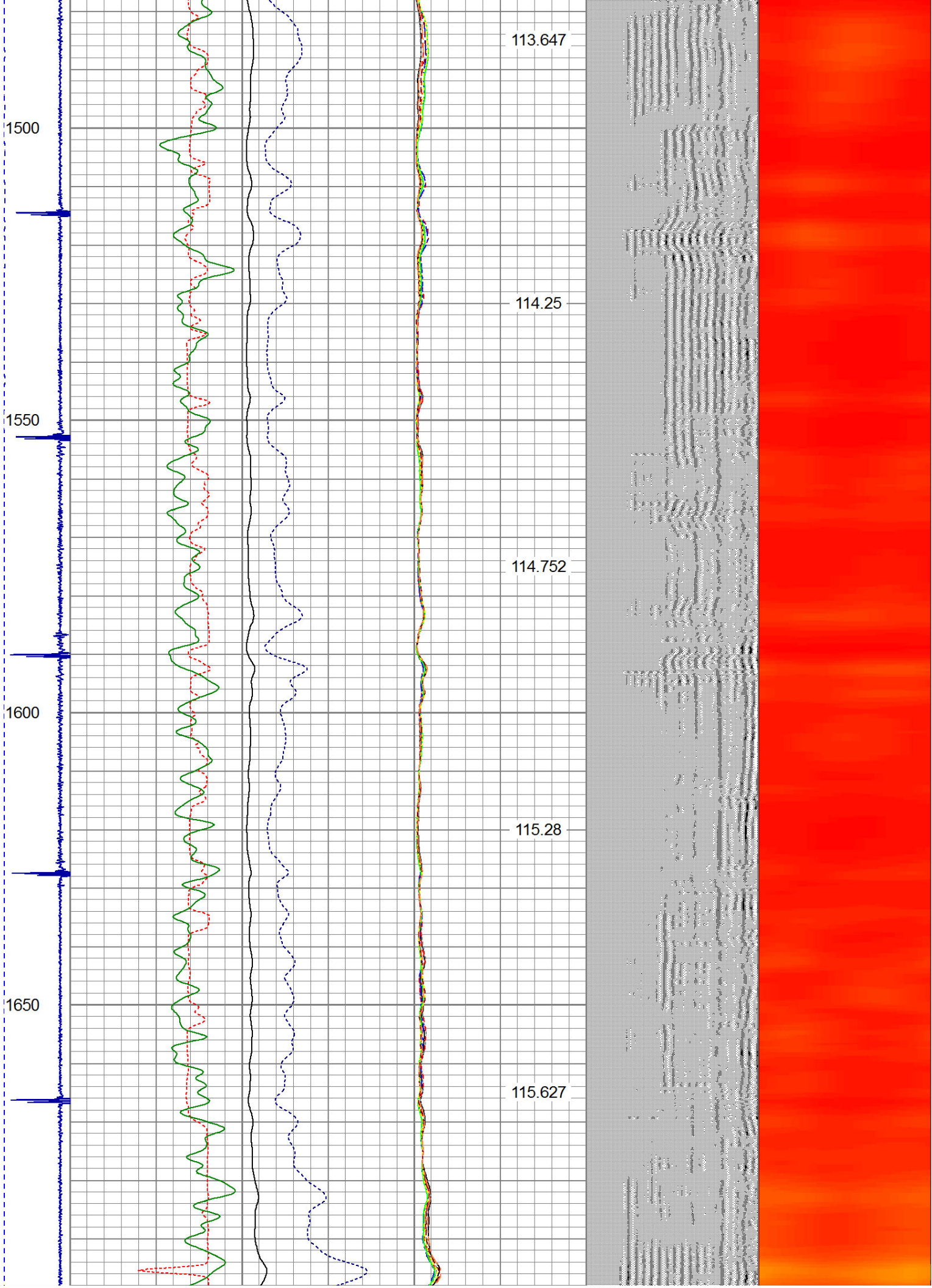
110.44



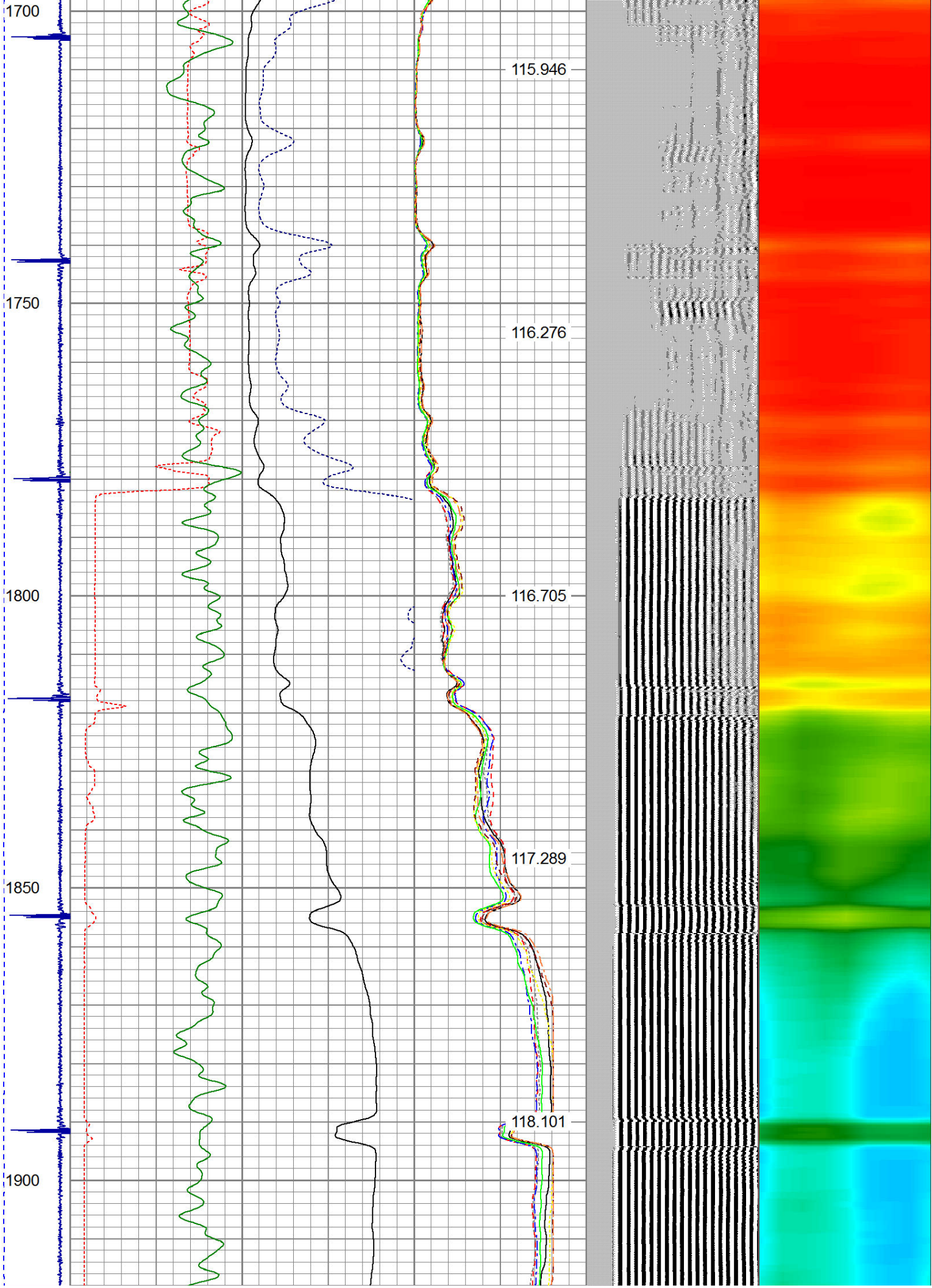




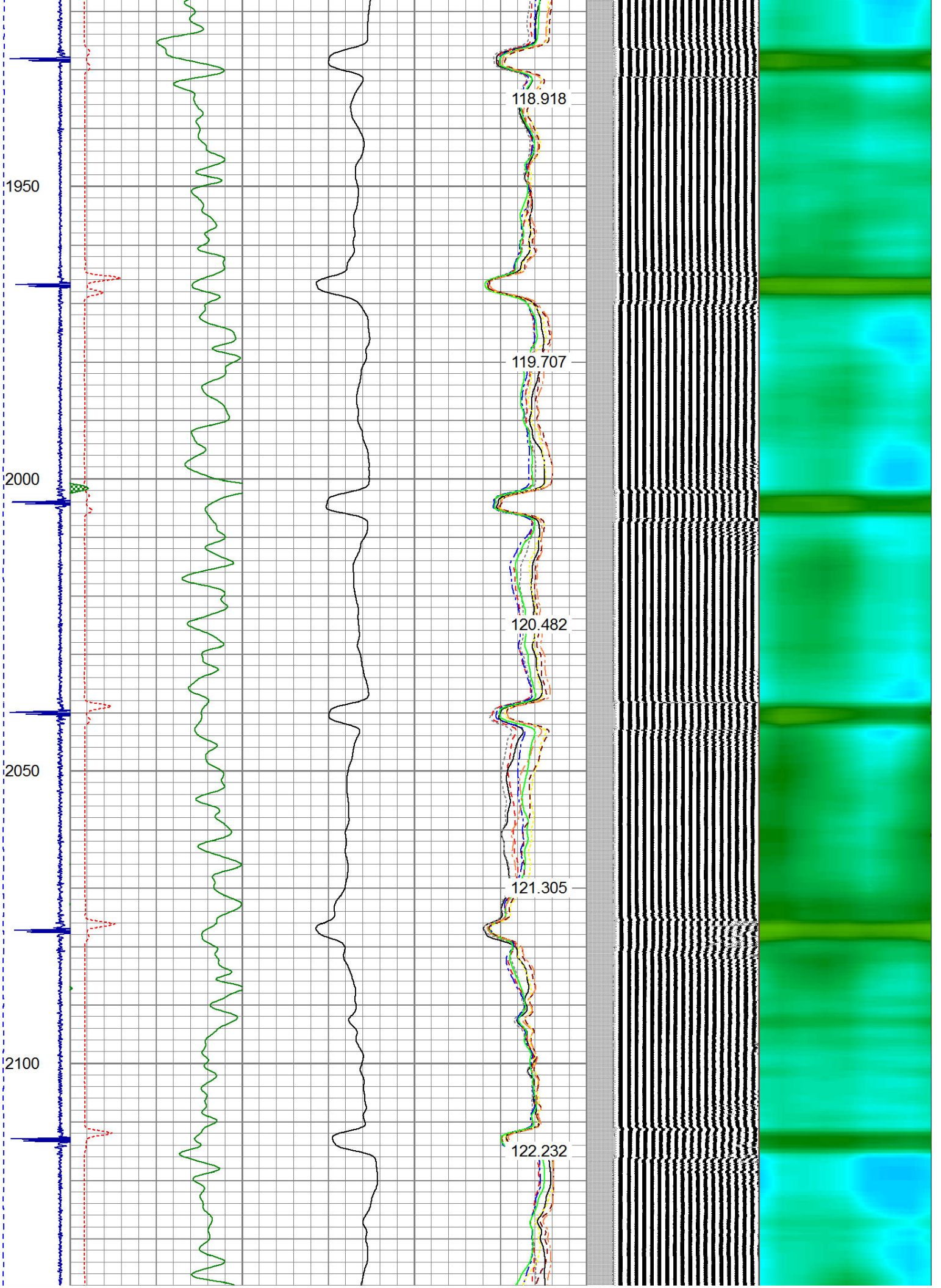














2150

2200

2250

2300

2350

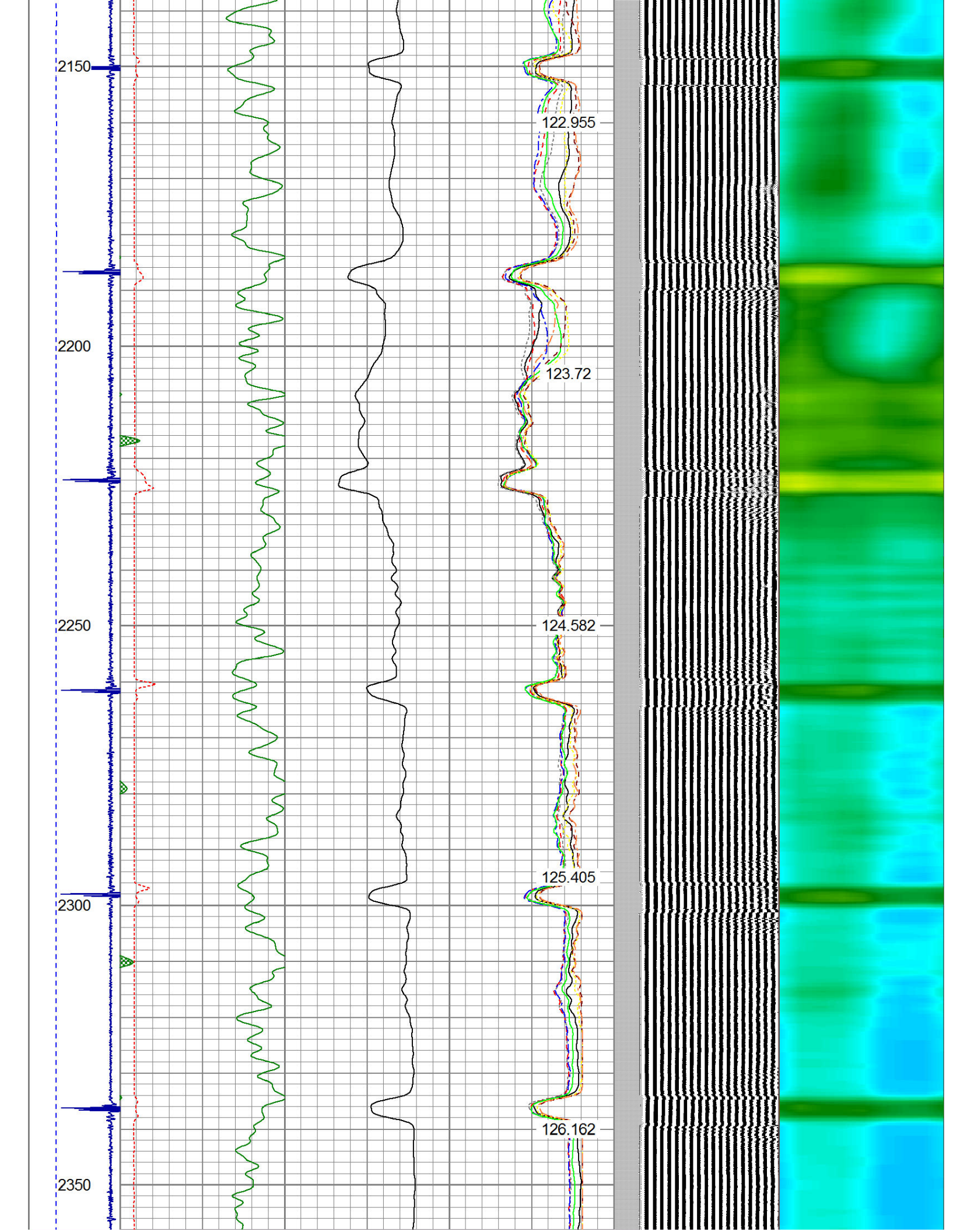
122.955

123.72

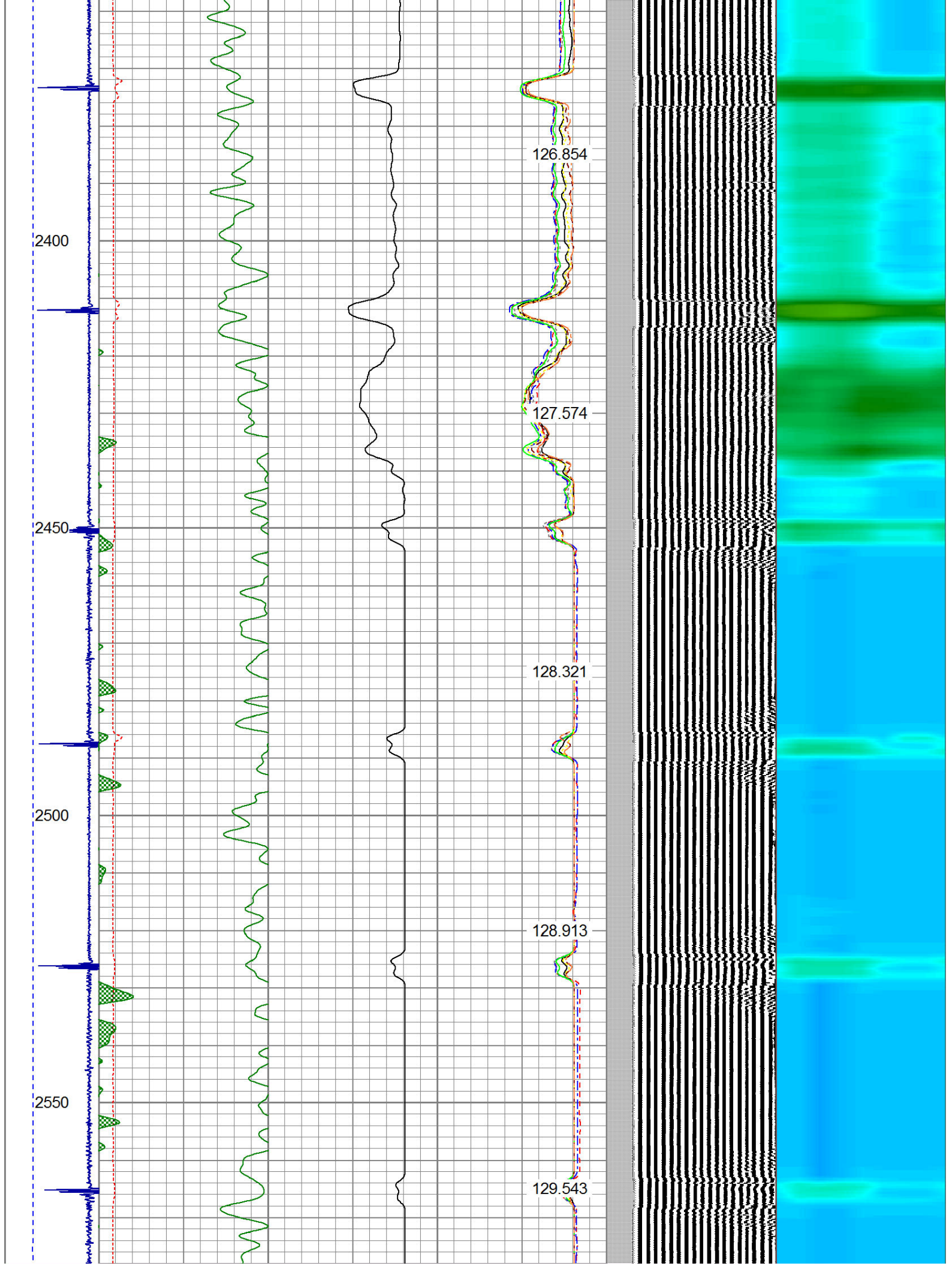
124.582

125.405

126.162









2600

2650

2700

2750

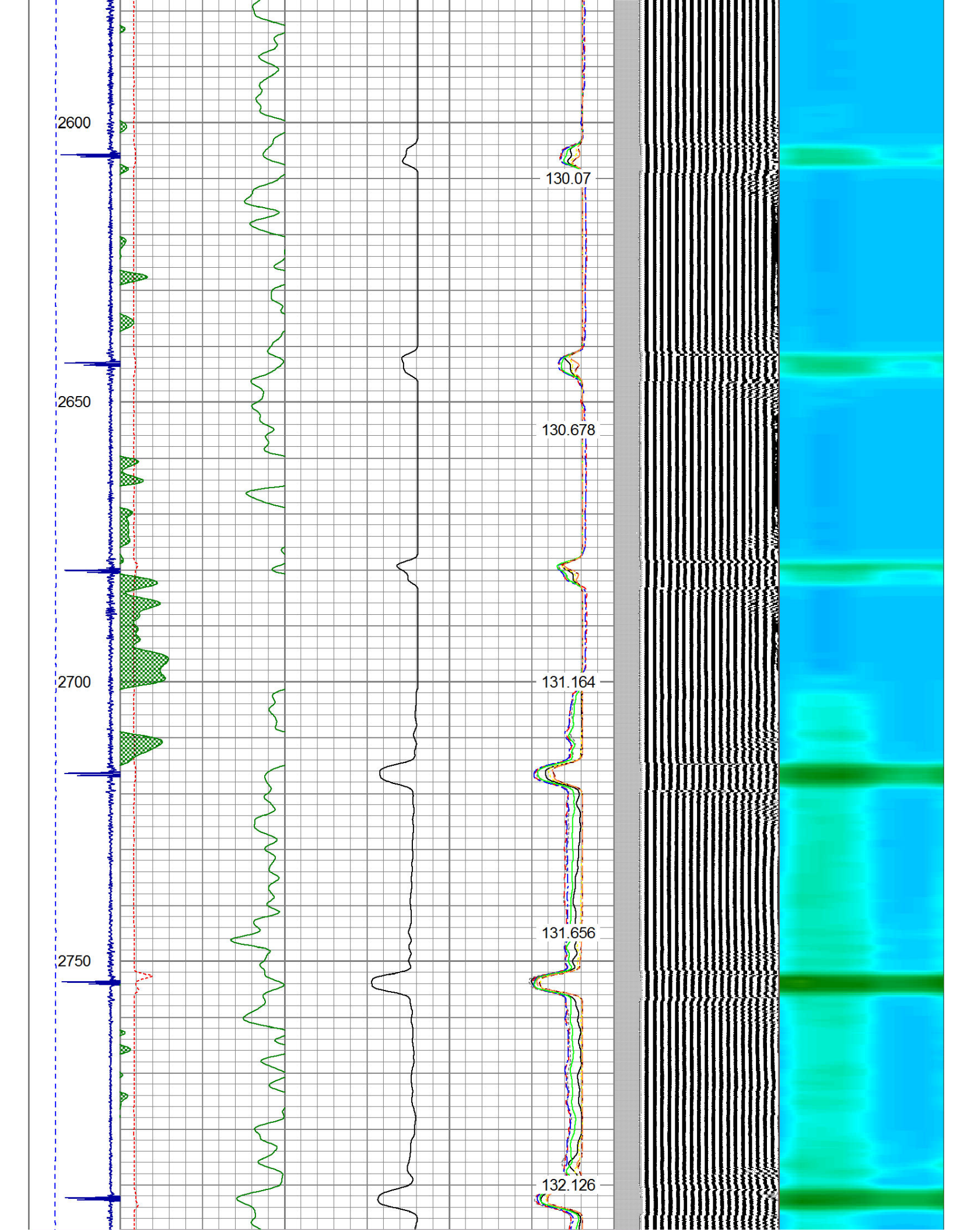
130.07

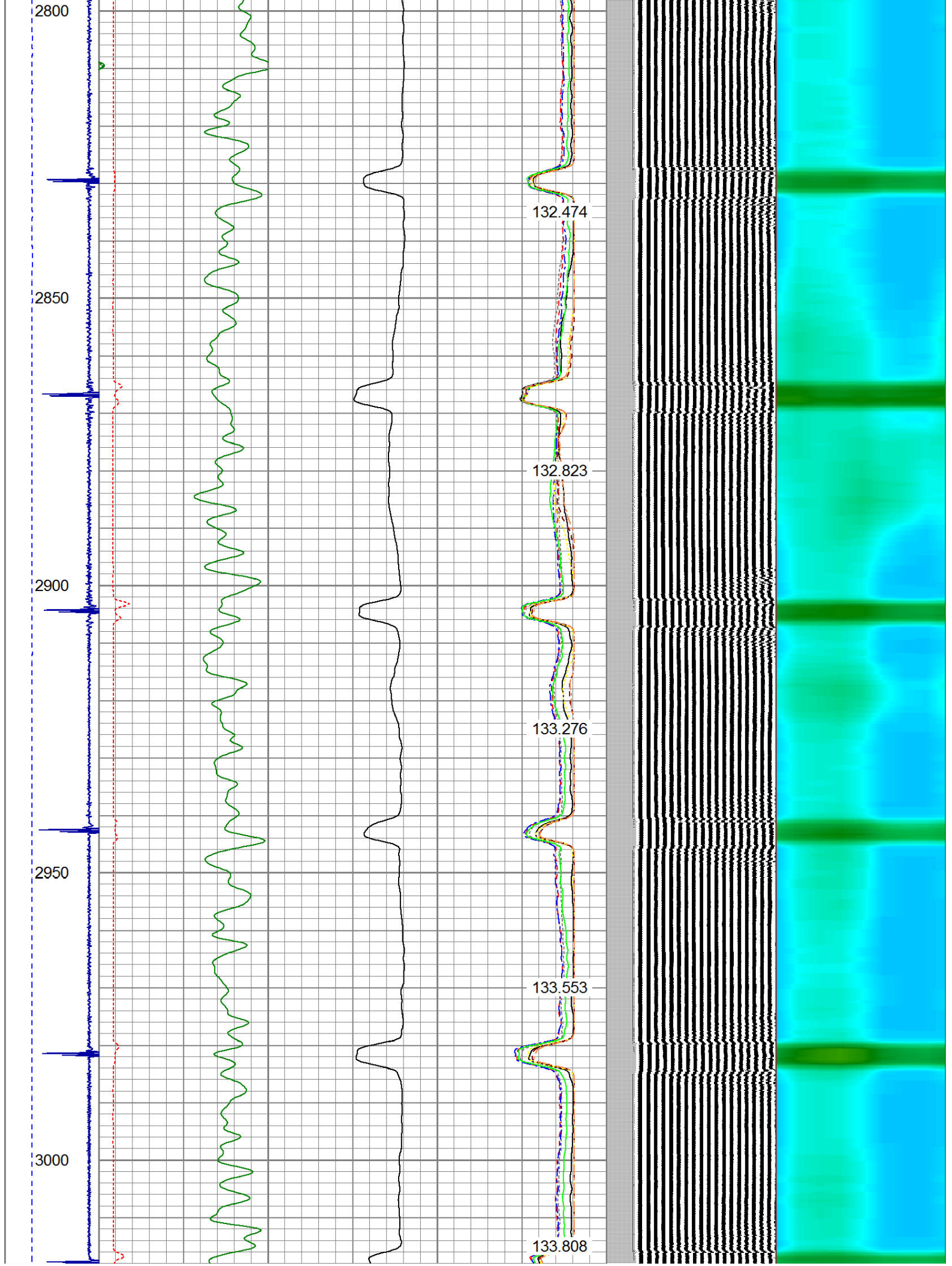
130.678

131.164

131.656

132.126







3050

3100

3150

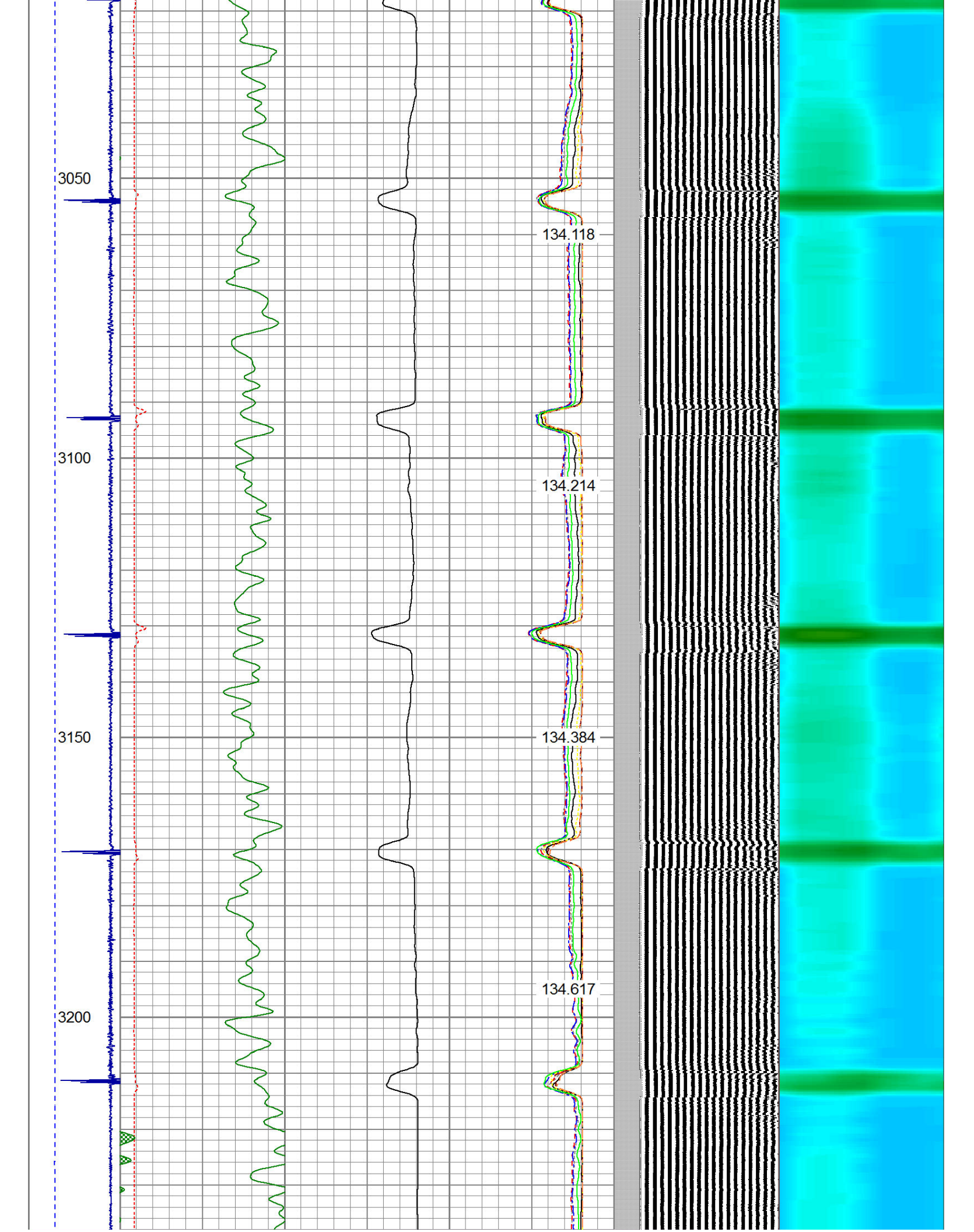
3200

134.118

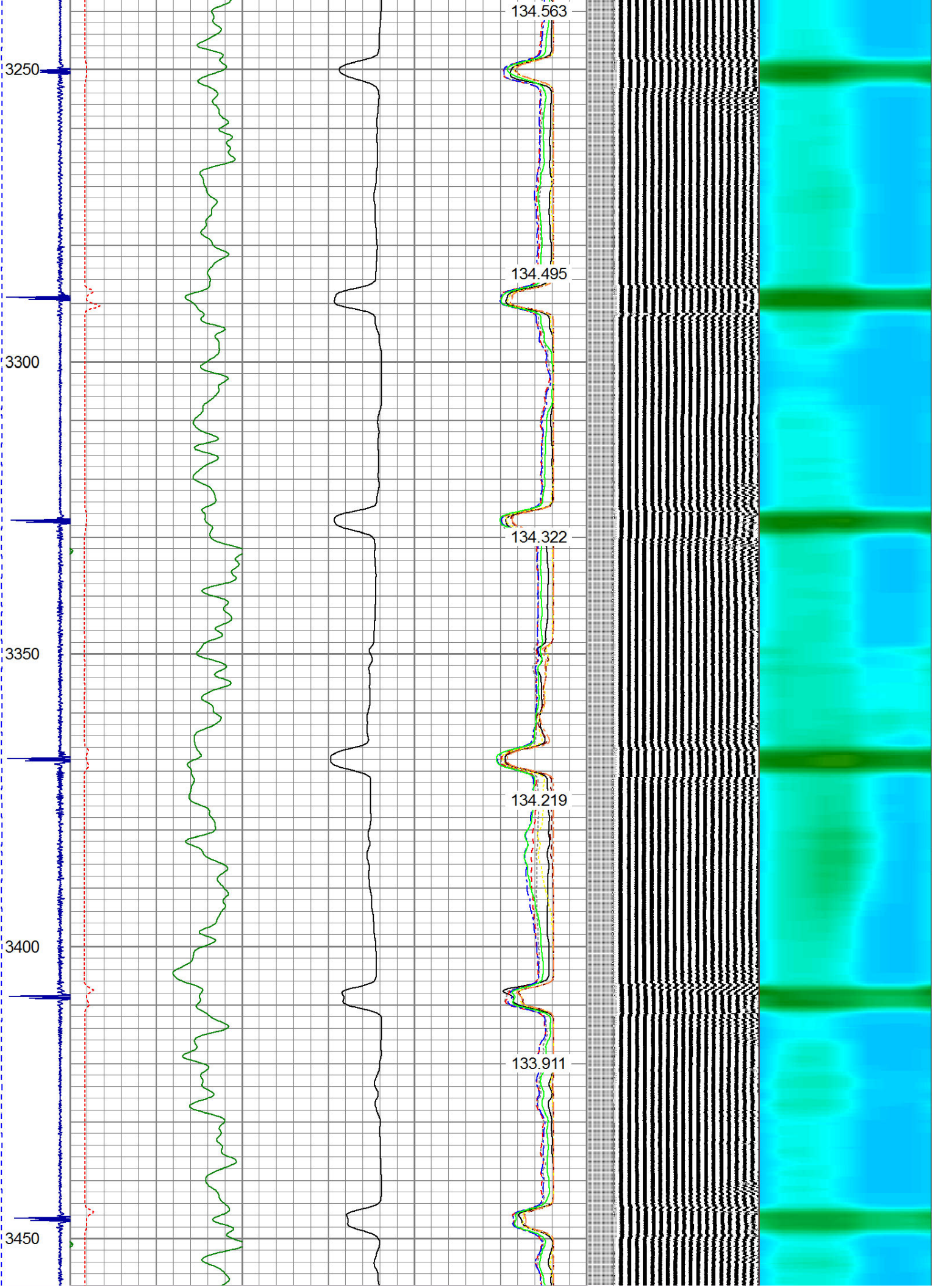
134.214

134.384

134.617









3500

3550

3600

3650

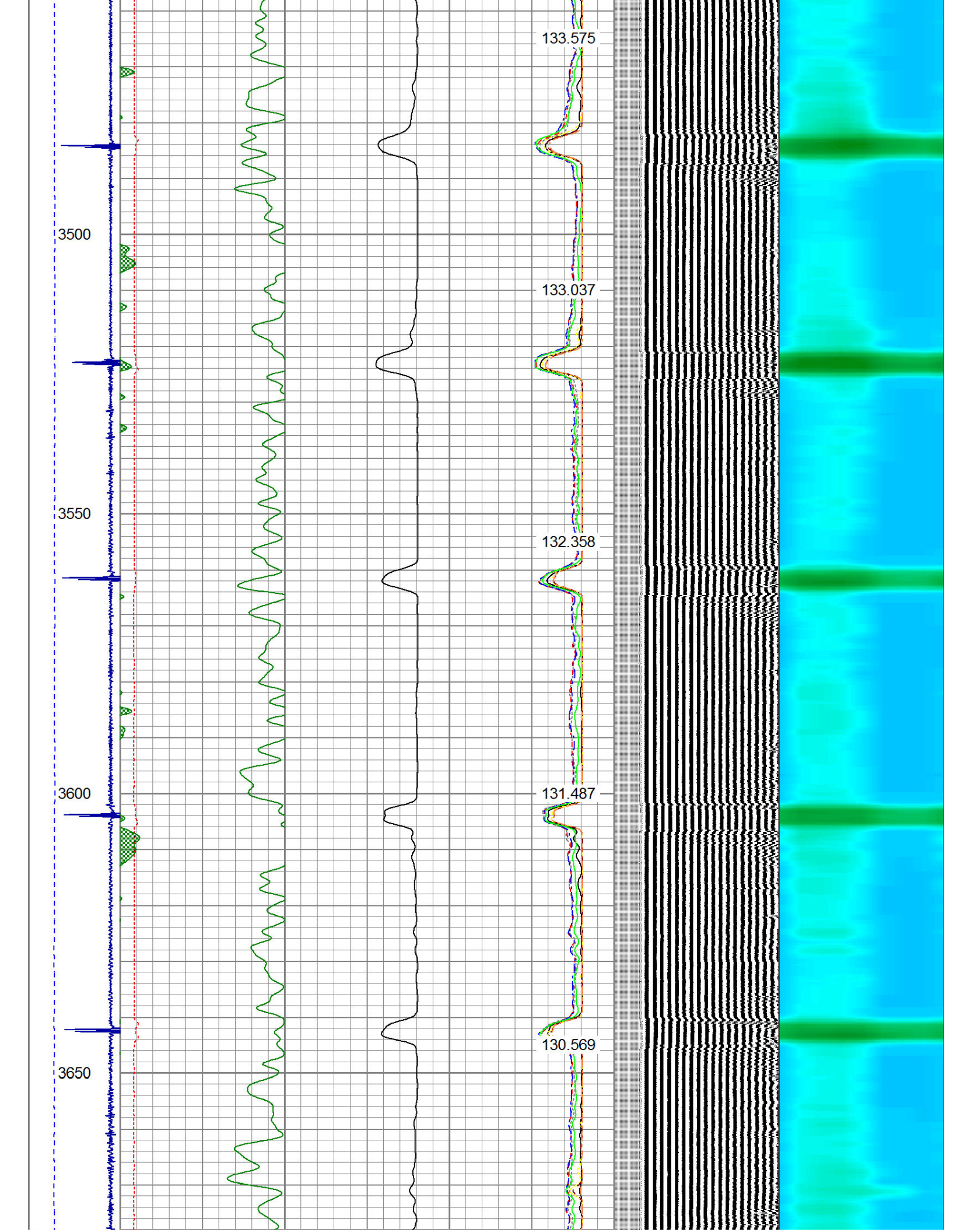
133.575

133.037

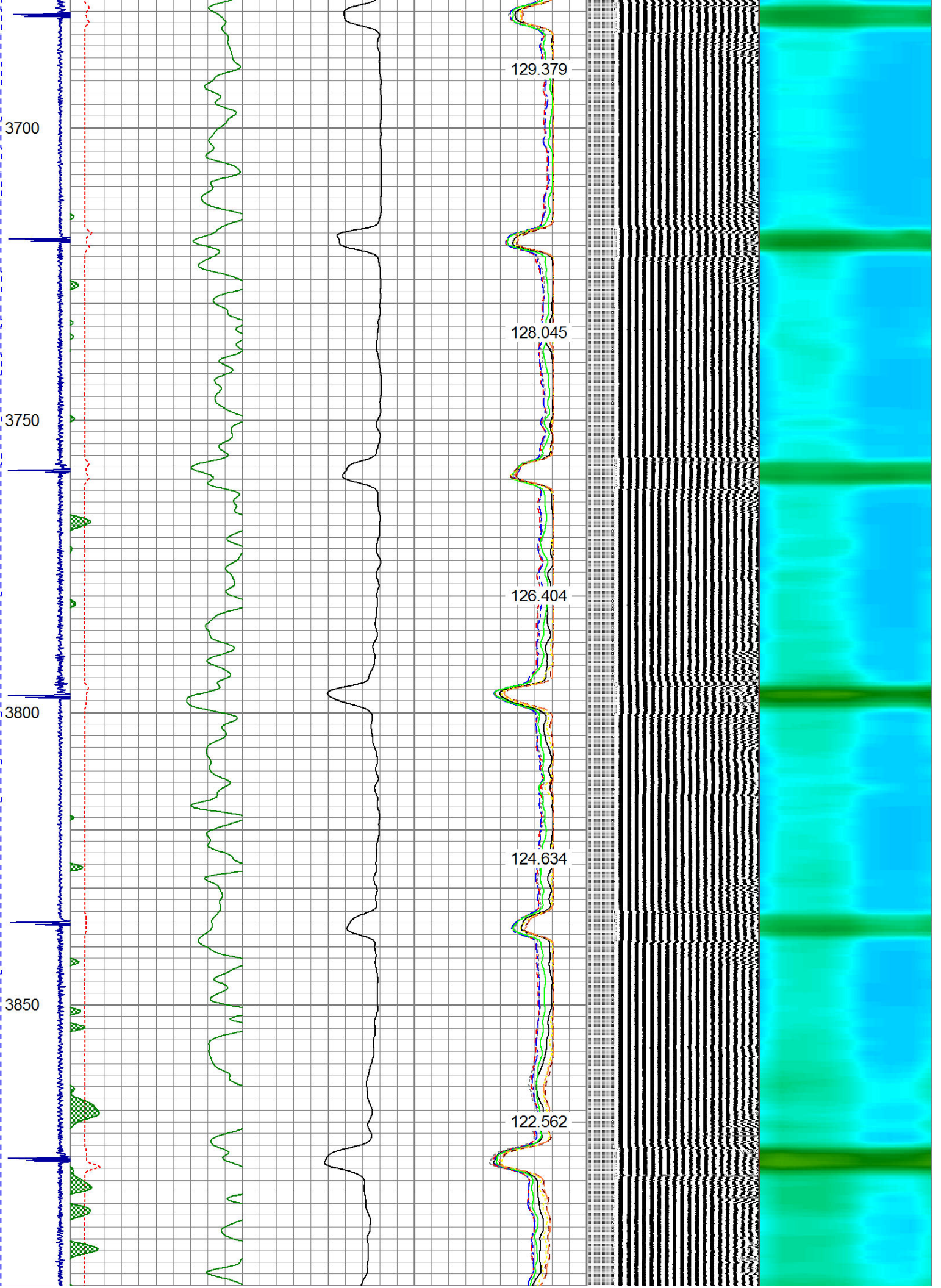
132.358

131.487

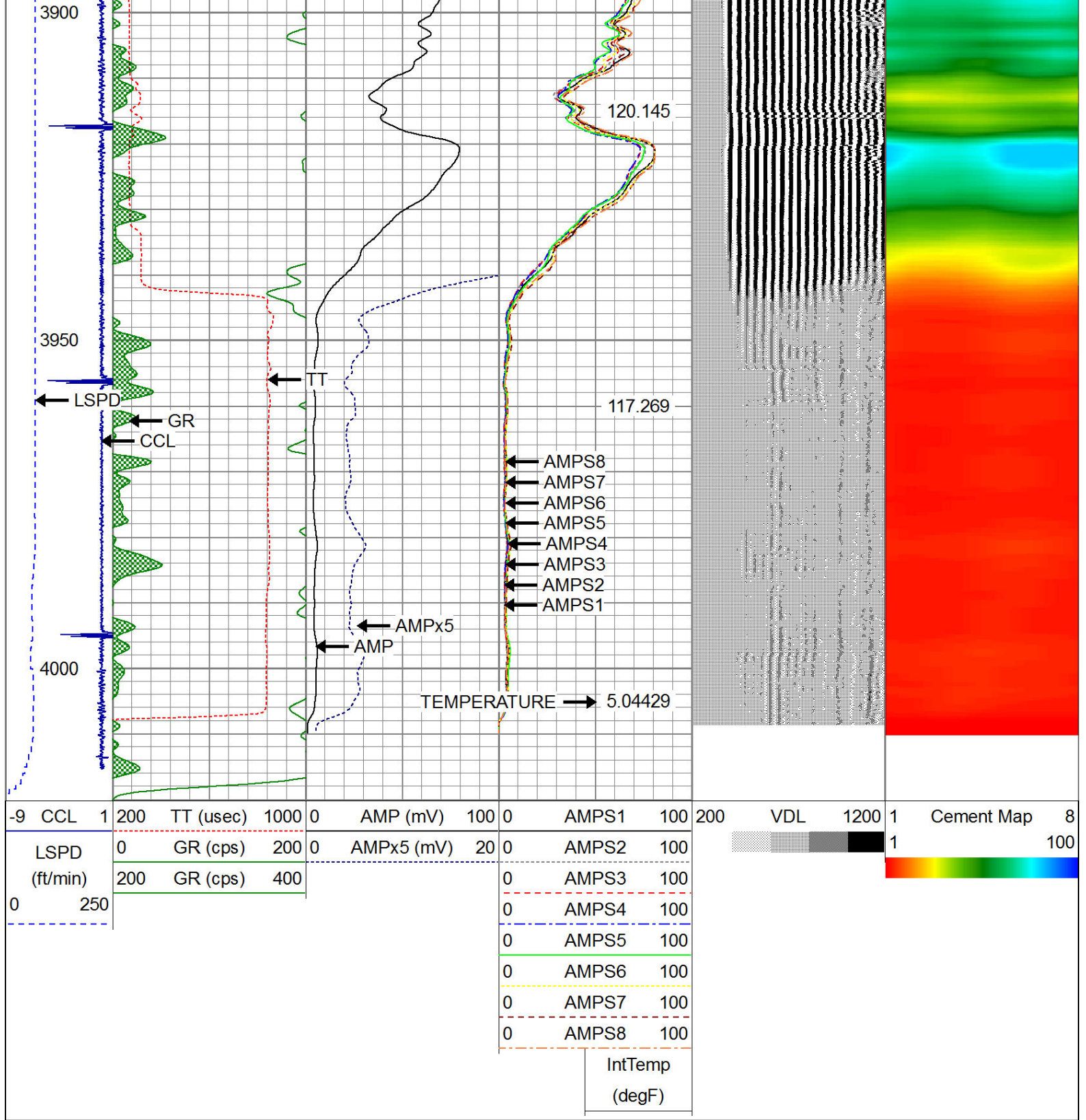
130.569











Calibration Report		
Database File:	vynckier don gu b 2.db	
Dataset Pathname:	pass4	
Dataset Creation:	Thu Jan 14 09:59:16 2016 by Log 7.0 B1	
Gamma Ray Calibration Report		
Serial Number:	275	
Tool Model:	Probe	
Performed:	Wed Jul 16 08:14:01 2014	
Calibrator Value:	120.0	cps
Count Rate:	22.2	







Internal Reference Calibration, performed Tue Jun 05 07:53:42 2012:

	Raw (v)		Calibrated (v)		Results	
	Zero	Cal	Zero	Cal	Gain	Offset
CAL	0.000	0.000	1.553	2.500	1.000	0.000

Air Zero Calibration, performed Thu Jan 14 09:36:34 2016:

	Raw (v)		Calibrated (v)		Results
	Zero		Zero		Offset
3'	0.000		0.000		0.000
5'	0.000		0.000		0.000
SUM					
S1	0.000		0.000		0.000
S2	0.000		0.000		0.000
S3	0.000		0.000		0.000
S4	0.000		0.000		0.000
S5	0.000		0.000		0.000
S6	0.000		0.000		0.000
S7	0.000		0.000		0.000
S8	0.000		0.000		0.000



CompanyANADARKO PETROLEUM CORP.

Well VYNCKIER DON GU B 2

Field WATTENBERG

County WELD

State COLORADO