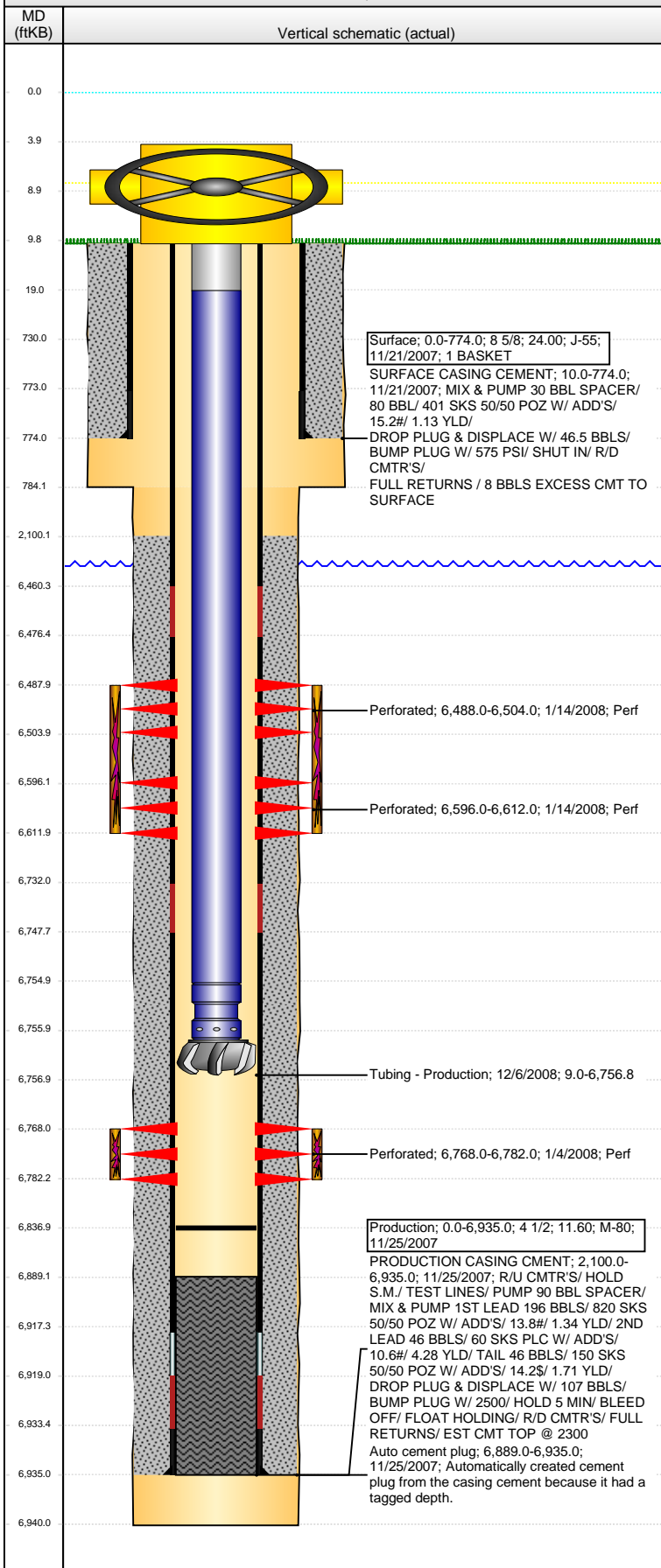


Well Name: LARSON A25-23

VERTICAL - ORIGINAL HOLE, 2/4/2016 3:31:31 PM



Well Header

API	Business Unit	District	Well Config
05-123-26465	DJ BASIN	15	VERTICAL
Original KB Elevation (ft)	KB - GL / MSL (ftKB)	Spud Date	P & A Date
4,646.00	10.00	11/20/2007	

Comment

Directions To Well

WCR 61 & 64, West 2/10, North 2/10, West 200' feet

Congressional Location

Quarter 1	Quarter 2	Quarter 3	Quarter 4	Section	Township	Twnshp N...	Range	Rng E/W Dir
		NE	SE	25	6	N	64	W

Bottom Hole Location

North-South Distance (ft)	From N or S Line	East-West Distance (ft)	From E or W Line

Plug Back Total Depths

Date	Depth (ftKB)	Method	Com
11/26/2007	6,917.5	CASING TALLY	TOP OF FLOAT COLLAR
12/4/2007	6,889.0	CASED HOLE LOG	DEPTH LOGGER ON CBL
12/6/2008	6,837.0	TUBING TALLY	DRILL CIFT W/ CUTRITE BIT AND N2, CHASE D...

Wellbore Sections

Section Des	Size (in)	Act Top, MD (ftKB)	Act Btm, MD (ftKB)
Surface	12 1/4	10.0	784.0
Production	7 7/8	784.0	6,940.0

Zone Statuses

Zone Name	Status Date	Status	Fluid Type	Job	Prod Method
CODELL	2/28/2008	PR	Gas	DRILLING/CO...	
CODELL	3/1/2010	PR	Water		Flowing
CODELL	11/13/2012	PR			
NIOBRARA	2/28/2008	PR	Gas	DRILLING/CO...	
NIOBRARA	3/1/2010	PR	Water		Flowing

Casing Strings

Surface, 774.0ftKB

Casing Description	Run Date	OD (in)	Wt/Len (l...)	Grade	Top, MD (ft...)	MD (ftKB)
Surface	11/21/2007	8 5/8	24.00	J-55	0.0	774.0

Production, 6,935.0ftKB

Casing Description	Run Date	OD (in)	Wt/Len (l...)	Grade	Top, MD (ft...)	MD (ftKB)
Production	11/25/2007	4 1/2	11.60	M-80	0.0	6,935.0

Cement

Description	Top Depth (ftKB)	Bottom Depth (ftKB)
SURFACE CASING CEMENT	10.0	774.0
Description	Top Depth (ftKB)	Bottom Depth (ftKB)
PRODUCTION CASING CMENT	2,100.0	6,935.0

Tubing Strings

Tubing Description	Run Date	String...	ID (in)	Wt (lb/ft)	Grade	Len (ft)	Set De...
Tubing - Production	12/6/2008	2 3/8	1.995	4.70	J-55	6,747.76	

Tubing Components

Item Des	OD (in)	Wt (lb/ft)	Grade	Jts	Len (ft)	Btm (ftKB)	Btm (TVD) (ftKB)
Tubing Pup Joint	2 3/8	4.70	J-55	1	10.00	19.0	
Tubing	2 3/8	4.70	J-55	220	6,735.96	6,755.0	
Pump Seating	2 3/8			1	1.10	6,756.1	
Nipple							
Cutrite Blade Bit	3 7/8			1	0.70	6,756.8	

Perforation Data

Zone	Bnch/St g	Entered Shot Total	Top (ftKB)	Btm (ftKB)	Date
NIOBRARA, ORIGINAL HOLE	A	64	6,488.00	6,504.00	1/14/2008
NIOBRARA, ORIGINAL HOLE	B	64	6,596.00	6,612.00	1/14/2008
CODELL, ORIGINAL HOLE		56	6,768.00	6,782.00	1/4/2008

Stimulations & Treatments

Date	Zone	Primary Job Type
1/14/2008	CODELL, ORIGINAL HOLE	DRILLING/COMPLETION - ORIGINAL
Technical Result	Tech Result Details	Tech Result Note

Comment

(CODELL) TREATMENT WENT WELL NO ISSUES TO REPORT

Well Name: LARSON A25-23

VERTICAL - ORIGINAL HOLE, 2/4/2016 3:31:33 PM

Stimulations & Treatments

Date 1/14/2008	Zone NIOBRARA, ORIGINAL HOLE	Primary Job Type DRILLING/COMPLETION - ORIGINAL
Technical Result	Tech Result Details	Tech Result Note

Comment
(NIOBRARA) TREAT MENT WENT WELL NO ISSUES

Other In Hole

Run Date	Des	OD (in)	Top (ftKB)	Btm (ftKB)

Logs

Date	Type	Top, MD (ftKB)	Btm, MD (ftKB)
12/4/2007	CBL/CCL/GR	13.0	6,882.0
12/10/2007	PULSED NEUTRON	700.0	6,876.0
4/1/2014	GYRO	12.0	6,700.0

