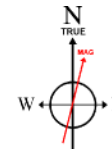


Location:	COLORADO	Slot:	SLOT#04 STATE PRONGHORN V-32-31MRLNB (1270'FNL & 708'FEL, SEC.32)
Field:	WELD COUNTY	Well:	STATE PRONGHORN V-32-31MRLNB
Facility:	SEC.32-T5N-R61W	Wellbore:	STATE PRONGHORN V-32-31MRLNB PWB

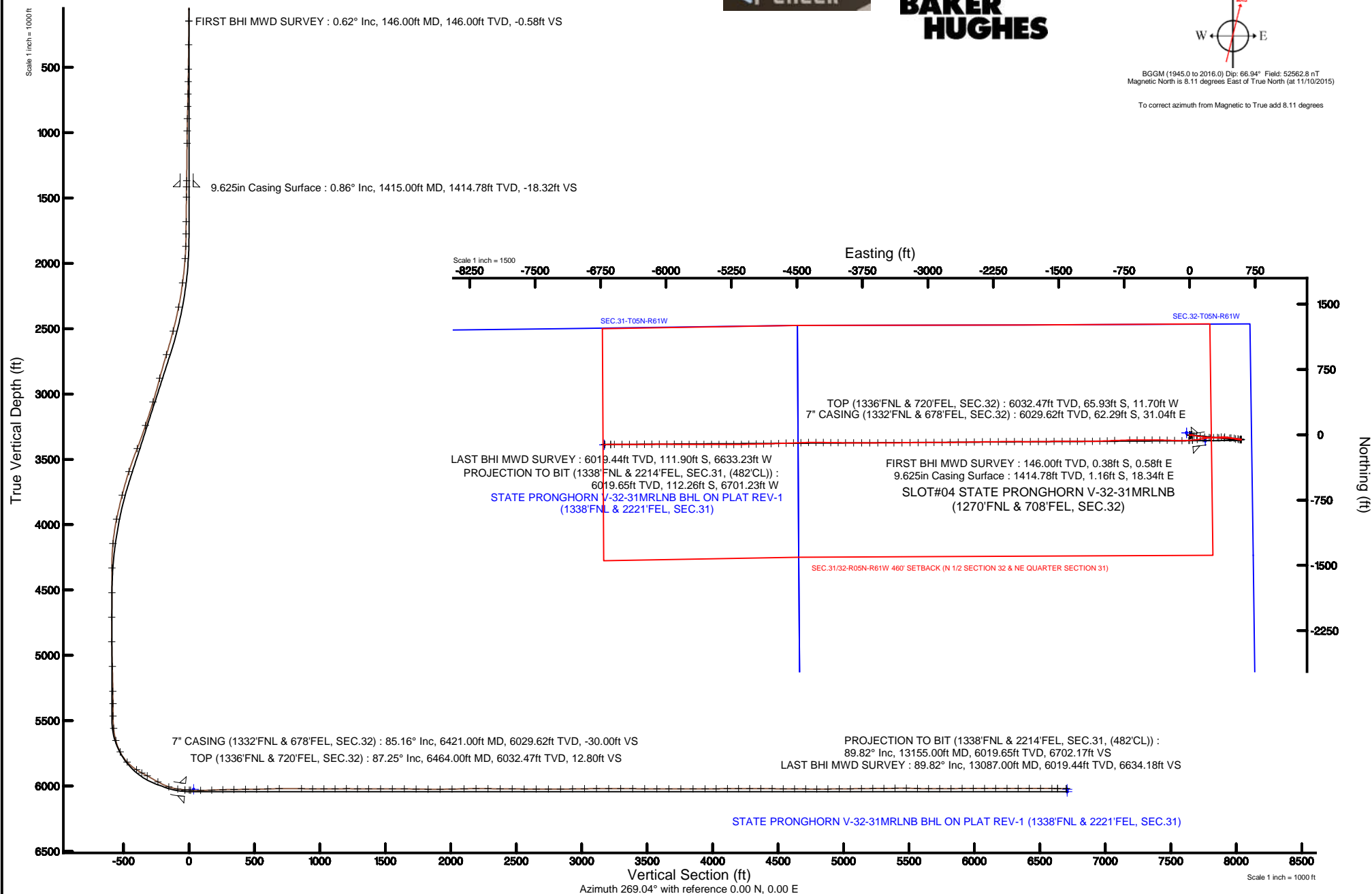
Location:	COLORADO	Slot:	SLOT#04 STATE PRONGHORN V-32-31MRLNB (1270'FNL & 708'FEL, SEC.32)
Field:	WELD COUNTY	Well:	STATE PRONGHORN V-32-31MRLNB
Facility:	SEC.32-T5N-R61W	Wellbore:	STATE PRONGHORN V-32-31MRLNB PWB

True vertical depths are referenced to XTREME 22 (17KB) (RKB)	Grid System: NAD83 / Lambert Colorado SP, Northern Zone (501), US feet
Measured depths are referenced to XTREME 22 (17KB) (RKB)	North Reference: True north
XTREME 22 (17KB) (RKB) to Mean Sea Level: 4562 feet	Scale: True distance
Mean Sea Level to Mud line (At Slot: SLO7#04 STATE PRONGHORN V-32-31MRLNB (1270FNL & 708FEL, SEC.32): 0 feet	Depths are in feet
Coordinates are in feet referenced to Slot	Created by: ingmjmr on 1/26/2016



BGGM (1945.0 to 2016.0) Dip: 66.94° Field: 52562.8 nT
Magnetic North is 8.11 degrees East of True North (at 11/10/2015)

To correct azimuth from Magnetic to True add 8.11 degrees





Actual Wellpath Report

STATE PRONGHORN V-32-31MRLNB AWP

Page 1 of 6



REFERENCE WELLPATH IDENTIFICATION

Operator	BONANZA CREEK OIL COMPANY	Slot	SLOT#04 STATE PRONGHORN V-32-31MRLNB (1270'FNL & 708'FEL, SEC.32)
Area	COLORADO	Well	STATE PRONGHORN V-32-31MRLNB
Field	WELD COUNTY	Wellbore	STATE PRONGHORN V-32-31MRLNB AWB
Facility	SEC.32-T5N-R61W		

REPORT SETUP INFORMATION

Projection System	NAD83 / Lambert Colorado SP, Northern Zone (501), US feet	Software System	WellArchitect® 4.1.1
North Reference	True	User	Ingmjmr
Scale	0.999959	Report Generated	1/26/2016 at 9:49:48 AM
Convergence at slot	0.82° East	Database/Source file	WA_DEN_Denver_Defn/STATE_PRONGHORN_V-32-31MRLNB_AWB.xml

WELLPATH LOCATION

	Local coordinates		Grid coordinates		Geographic coordinates	
	North[ft]	East[ft]	Easting[US ft]	Northing[US ft]	Latitude	Longitude
Slot Location	7.29	-242.45	3354996.96	1376932.08	40°21'39.888"N	104°13'33.816"W
Facility Reference Pt			3355239.49	1376928.28	40°21'39.816"N	104°13'30.684"W
Field Reference Pt			3335925.10	1457282.25	40°34'56.460"N	104°17'26.016"W

WELLPATH DATUM

Calculation method	Minimum curvature	XTREME 22 (17'KB) (RKB) to Facility Vertical Datum	4582.00ft
Horizontal Reference Pt	Slot	XTREME 22 (17'KB) (RKB) to Mean Sea Level	4582.00ft
Vertical Reference Pt	XTREME 22 (17'KB) (RKB)	XTREME 22 (17'KB) (RKB) to Mud Line at Slot (SLOT#04 STATE PRONGHORN V-32-31MRLNB (1270'FNL & 708'FEL, SEC.32))	4582.00ft
MD Reference Pt	XTREME 22 (17'KB) (RKB)	Section Origin	N 0.00, E 0.00 ft
Field Vertical Reference	Mean Sea Level	Section Azimuth	269.04°



Actual Wellpath Report

STATE PRONGHORN V-32-31MRLNB AWP

Page 2 of 6



REFERENCE WELLPATH IDENTIFICATION

Operator	BONANZA CREEK OIL COMPANY	Slot	SLOT#04 STATE PRONGHORN V-32-31MRLNB (1270'FNL & 708'FEL, SEC.32)
Area	COLORADO	Well	STATE PRONGHORN V-32-31MRLNB
Field	WELD COUNTY	Wellbore	STATE PRONGHORN V-32-31MRLNB AWP
Facility	SEC.32-T5N-R61W		

WELLPATH DATA (126 stations) † = interpolated/extrapolated station

MD [ft]	Inclination [°]	Azimuth [°]	TVD [ft]	Vert Sect [ft]	North [ft]	East [ft]	DLS [°/100ft]	Comments
0.00†	0.000	123.320	0.00	0.00	0.00	0.00	0.00	
17.00	0.000	123.320	17.00	0.00	0.00	0.00	0.00	
146.00	0.620	123.320	146.00	-0.58	-0.38	0.58	0.48	FIRST BHI MWD SURVEY
327.00	0.680	124.210	326.99	-2.26	-1.53	2.29	0.03	
515.00	1.170	141.570	514.96	-4.34	-3.66	4.41	0.30	
609.00	1.300	131.720	608.94	-5.71	-5.12	5.80	0.26	
704.00	1.330	117.390	703.91	-7.47	-6.34	7.58	0.35	
799.00	1.390	104.090	798.89	-9.56	-7.13	9.68	0.34	
893.00	1.290	90.550	892.86	-11.72	-7.42	11.84	0.35	
987.00	1.000	47.840	986.85	-13.39	-6.88	13.51	0.93	
1081.00	1.050	30.800	1080.83	-14.46	-5.59	14.56	0.33	
1368.00	1.000	47.250	1367.79	-17.71	-1.63	17.74	0.10	
1494.00	0.740	83.770	1493.77	-19.34	-0.79	19.36	0.47	
1682.00	0.590	78.220	1681.76	-21.50	-0.46	21.51	0.09	
1776.00	0.540	91.540	1775.75	-22.42	-0.38	22.43	0.15	
1870.00	2.230	114.390	1869.72	-24.52	-1.14	24.54	1.86	
1964.00	4.270	106.560	1963.57	-29.51	-2.90	29.56	2.22	
2152.00	8.020	104.980	2150.45	-48.80	-8.28	48.94	2.00	
2339.00	11.110	96.680	2334.84	-79.21	-13.75	79.45	1.81	
2527.00	14.810	99.190	2518.02	-120.83	-19.70	121.17	1.99	
2715.00	17.220	97.040	2698.71	-172.04	-26.95	172.52	1.32	
2903.00	14.580	93.040	2879.51	-223.22	-31.62	223.78	1.52	
3092.00	17.030	92.980	3061.35	-274.57	-34.32	275.18	1.30	
3281.00	18.490	91.420	3241.34	-332.13	-36.50	332.78	0.81	
3468.00	21.220	91.900	3417.21	-395.56	-38.35	396.26	1.46	
3655.00	18.060	89.610	3593.31	-458.37	-39.28	459.09	1.74	
3843.00	14.330	97.920	3773.84	-510.52	-42.29	511.30	2.33	
4032.00	11.700	93.970	3957.97	-552.73	-46.84	553.59	1.47	
4221.00	5.710	107.060	4144.73	-580.79	-50.93	581.72	3.32	
4408.00	2.040	193.670	4331.37	-588.80	-56.90	589.84	3.18	
4597.00	1.140	9.470	4520.34	-588.29	-58.31	589.35	1.68	
4785.00	1.260	36.860	4708.30	-589.90	-54.81	590.90	0.31	
4973.00	0.970	300.290	4896.28	-589.81	-52.36	590.76	0.89	
5162.00	1.810	247.910	5085.23	-585.65	-52.67	586.62	0.76	
5352.00	0.960	236.830	5275.17	-581.51	-54.67	582.50	0.47	
5446.00	0.700	212.810	5369.16	-580.52	-55.58	581.53	0.46	
5541.00	0.480	199.330	5464.16	-580.06	-56.45	581.09	0.27	
5636.00	5.810	262.840	5558.99	-575.14	-57.42	576.18	5.91	
5730.00	14.830	279.040	5651.39	-558.53	-56.12	559.54	9.99	
5824.00	27.140	282.510	5738.99	-525.70	-49.56	526.60	13.16	
5919.00	43.480	283.360	5816.25	-472.60	-37.23	473.29	17.21	
6013.00	57.910	273.930	5875.71	-401.12	-26.96	401.62	17.17	
6061.00	61.100	266.020	5900.10	-359.81	-27.03	360.32	15.67	
6107.00	61.340	265.780	5922.25	-319.56	-29.91	320.10	0.69	
6201.00	60.430	266.030	5967.98	-237.56	-35.78	238.19	1.00	



Actual Wellpath Report

STATE PRONGHORN V-32-31MRLNB AWP

Page 3 of 6



REFERENCE WELLPATH IDENTIFICATION

Operator	BONANZA CREEK OIL COMPANY	Slot	SLOT#04 STATE PRONGHORN V-32-31MRLNB (1270'FNL & 708'FEL, SEC.32)
Area	COLORADO	Well	STATE PRONGHORN V-32-31MRLNB
Field	WELD COUNTY	Wellbore	STATE PRONGHORN V-32-31MRLNB AWP
Facility	SEC.32-T5N-R61W		

WELLPATH DATA (126 stations) † = interpolated/extrapolated station

MD [ft]	Inclination [°]	Azimuth [°]	TVD [ft]	Vert Sect [ft]	North [ft]	East [ft]	DLS [°/100ft]	Comments
6294.00	70.130	260.900	6006.85	-153.63	-45.52	154.42	11.57	
6364.00	82.390	262.060	6023.44	-86.36	-55.56	87.30	17.59	
6421.00†	85.162	264.289	6029.62	-30.00	-62.29	31.04	6.23	7" CASING (1332'FNL & 678'FEL, SEC.32)
6454.00	86.770	265.570	6031.94	2.83	-65.20	-1.75	6.23	
6464.00†	87.249	266.037	6032.47	12.80	-65.93	-11.70	6.68	TOP (1336'FNL & 720'FEL, SEC.32)
6540.00	90.890	269.580	6033.70	88.75	-68.83	-87.61	6.68	
6625.00	92.370	272.890	6031.28	173.64	-67.00	-172.55	4.26	
6711.00	91.980	272.410	6028.02	259.41	-63.03	-258.39	0.72	
6796.00	90.340	270.730	6026.30	344.30	-60.70	-343.34	2.76	
6883.00	90.490	269.590	6025.67	431.28	-60.46	-430.33	1.32	
6969.00	91.050	269.930	6024.51	517.27	-60.82	-516.32	0.76	
7054.00	91.680	270.120	6022.49	602.23	-60.78	-601.30	0.77	
7141.00	91.290	268.910	6020.23	689.20	-61.52	-688.26	1.46	
7312.00	88.550	267.440	6020.47	860.16	-66.96	-859.16	1.82	
7397.00	89.600	267.890	6021.84	945.12	-70.43	-944.07	1.34	
7483.00	90.250	268.160	6021.96	1031.10	-73.39	-1030.02	0.82	
7568.00	90.490	269.580	6021.41	1116.10	-75.07	-1115.00	1.69	
7654.00	90.190	269.970	6020.90	1202.09	-75.40	-1201.00	0.57	
7739.00	89.290	269.810	6021.28	1287.08	-75.57	-1286.00	1.08	
7824.00	89.540	270.470	6022.15	1372.06	-75.36	-1370.99	0.83	
7915.00	90.550	269.590	6022.08	1463.04	-75.31	-1461.99	1.47	
8006.00	89.940	268.860	6021.69	1554.04	-76.54	-1552.98	1.05	
8097.00	89.570	269.340	6022.08	1645.04	-77.97	-1643.97	0.67	
8187.00	89.230	269.490	6023.02	1735.03	-78.89	-1733.96	0.41	
8279.00	89.050	269.590	6024.40	1827.02	-79.63	-1825.94	0.22	
8370.00	90.550	270.460	6024.72	1918.00	-79.59	-1916.94	1.91	
8462.00	90.890	270.890	6023.56	2009.96	-78.50	-2008.93	0.60	
8554.00	91.540	269.120	6021.61	2101.92	-78.50	-2100.90	2.05	
8645.00	89.910	269.080	6020.46	2192.91	-79.93	-2191.88	1.79	
8737.00	89.720	269.280	6020.76	2284.91	-81.24	-2283.87	0.30	
8829.00	89.630	269.390	6021.28	2376.90	-82.31	-2375.86	0.15	
8921.00	89.540	269.180	6021.95	2468.90	-83.46	-2467.85	0.25	
9013.00	89.110	269.030	6023.03	2560.89	-84.90	-2559.83	0.50	
9105.00	90.030	268.970	6023.72	2652.89	-86.50	-2651.82	1.00	
9198.00	90.000	268.420	6023.70	2745.89	-88.62	-2744.79	0.59	
9290.00	90.310	270.950	6023.45	2837.88	-89.12	-2836.78	2.77	
9382.00	91.140	269.990	6022.28	2929.84	-88.37	-2928.77	1.38	
9474.00	90.280	268.890	6021.14	3021.83	-89.27	-3020.76	1.52	
9565.00	90.800	269.810	6020.29	3112.82	-90.30	-3111.75	1.16	
9658.00	89.690	269.210	6019.89	3205.81	-91.10	-3204.74	1.36	
9750.00	89.660	269.710	6020.41	3297.81	-91.96	-3296.73	0.54	
9842.00	89.780	269.700	6020.86	3389.80	-92.44	-3388.73	0.13	
9934.00	90.000	269.850	6021.04	3481.79	-92.80	-3480.73	0.29	
10026.00	89.720	269.640	6021.26	3573.79	-93.21	-3572.73	0.38	
10118.00	89.820	269.980	6021.63	3665.78	-93.51	-3664.73	0.39	



Actual Wellpath Report

STATE PRONGHORN V-32-31MRLNB AWP

Page 4 of 6



REFERENCE WELLPATH IDENTIFICATION

Operator	BONANZA CREEK OIL COMPANY	Slot	SLOT#04 STATE PRONGHORN V-32-31MRLNB (1270'FNL & 708'FEL, SEC.32)
Area	COLORADO	Well	STATE PRONGHORN V-32-31MRLNB
Field	WELD COUNTY	Wellbore	STATE PRONGHORN V-32-31MRLNB AWP
Facility	SEC.32-T5N-R61W		

WELLPATH DATA (126 stations)

MD [ft]	Inclination [°]	Azimuth [°]	TVD [ft]	Vert Sect [ft]	North [ft]	East [ft]	DLS [°/100ft]	Comments
10210.00	89.870	270.030	6021.88	3757.76	-93.51	-3756.73	0.08	
10303.00	90.150	270.200	6021.86	3850.75	-93.32	-3849.73	0.35	
10395.00	90.340	270.660	6021.47	3942.72	-92.63	-3941.72	0.54	
10480.00	90.280	270.660	6021.01	4027.69	-91.65	-4026.72	0.07	
10565.00	90.150	270.820	6020.69	4112.65	-90.55	-4111.71	0.24	
10650.00	90.370	270.950	6020.30	4197.60	-89.24	-4196.70	0.30	
10736.00	90.250	270.310	6019.84	4283.57	-88.29	-4282.69	0.76	
10820.00	89.630	268.600	6019.93	4367.56	-89.09	-4366.68	2.17	
10907.00	89.320	267.780	6020.72	4454.55	-91.84	-4453.64	1.01	
10992.00	89.660	268.450	6021.48	4539.53	-94.64	-4538.59	0.88	
11078.00	89.570	268.030	6022.06	4625.52	-97.28	-4624.54	0.50	
11163.00	89.720	268.250	6022.59	4710.51	-100.04	-4709.50	0.31	
11249.00	89.910	268.260	6022.86	4796.50	-102.65	-4795.46	0.22	
11334.00	90.400	268.680	6022.63	4881.50	-104.92	-4880.42	0.76	
11420.00	90.550	268.710	6021.92	4967.49	-106.88	-4966.40	0.18	
11505.00	90.460	268.650	6021.17	5052.49	-108.84	-5051.37	0.13	
11590.00	90.770	268.760	6020.26	5137.48	-110.76	-5136.35	0.39	
11676.00	90.650	269.800	6019.19	5223.47	-111.84	-5222.33	1.22	
11761.00	90.280	270.190	6018.50	5308.46	-111.85	-5307.33	0.63	
11846.00	90.990	270.140	6017.56	5393.43	-111.60	-5392.32	0.84	
11932.00	89.460	270.060	6017.22	5479.42	-111.45	-5478.32	1.78	
12018.00	87.870	270.100	6019.23	5565.38	-111.33	-5564.29	1.85	
12103.00	89.880	270.070	6020.90	5650.34	-111.21	-5649.27	2.36	
12188.00	90.400	270.250	6020.69	5735.33	-110.97	-5734.27	0.65	
12273.00	90.620	270.490	6019.93	5820.30	-110.42	-5819.27	0.38	
12359.00	90.800	270.650	6018.87	5906.26	-109.57	-5905.26	0.28	
12444.00	89.820	269.990	6018.41	5991.24	-109.09	-5990.25	1.39	
12530.00	89.750	269.690	6018.73	6077.23	-109.33	-6076.25	0.36	
12615.00	90.090	269.930	6018.85	6162.22	-109.61	-6161.25	0.49	
12702.00	90.250	269.990	6018.59	6249.21	-109.67	-6248.25	0.20	
12787.00	90.340	269.720	6018.15	6334.20	-109.89	-6333.25	0.33	
12872.00	89.820	269.850	6018.03	6419.19	-110.21	-6418.25	0.63	
12958.00	89.480	269.450	6018.56	6505.19	-110.73	-6504.24	0.61	
13045.00	89.630	269.440	6019.23	6592.18	-111.58	-6591.24	0.17	
13087.00	89.820	269.690	6019.44	6634.18	-111.90	-6633.23	0.75	LAST BHI MWD SURVEY
13155.00	89.820	269.690	6019.65	6702.17	-112.26	-6701.23	0.00	PROJECTION TO BIT (1338'FNL & 2214'FEL, SEC.31, (482'CL))



Actual Wellpath Report

STATE PRONGHORN V-32-31MRLNB AWP

Page 5 of 6



REFERENCE WELLPATH IDENTIFICATION

Operator	BONANZA CREEK OIL COMPANY	Slot	SLOT#04 STATE PRONGHORN V-32-31MRLNB (1270'FNL & 708'FEL, SEC.32)
Area	COLORADO	Well	STATE PRONGHORN V-32-31MRLNB
Field	WELD COUNTY	Wellbore	STATE PRONGHORN V-32-31MRLNB AWB
Facility	SEC.32-T5N-R61W		

HOLE & CASING SECTIONS - Ref Wellbore: STATE PRONGHORN V-32-31MRLNB AWB Ref Wellpath: STATE PRONGHORN V-32-31MRLNB AWP

String/Diameter	Start MD [ft]	End MD [ft]	Interval [ft]	Start TVD [ft]	End TVD [ft]	Start N/S [ft]	Start E/W [ft]	End N/S [ft]	End E/W [ft]
13.5in Open Hole	17.00	1425.00	1408.00	17.00	1424.78	0.00	0.00	-1.09	18.47
9.625in Casing Surface	17.00	1415.00	1398.00	17.00	1414.78	0.00	0.00	-1.16	18.34
8.75in Open Hole	1425.00	6431.00	5006.00	1424.78	6030.42	-1.09	18.47	-63.25	21.12
7in Casing Intermediate	17.00	6421.00	6404.00	17.00	6029.62	0.00	0.00	-62.29	31.04
6.125in Open Hole	6431.00	13155.00	6724.00	6030.42	6019.65	-63.25	21.12	-112.26	-6701.23

TARGETS

Name	TVD [ft]	North [ft]	East [ft]	Grid East [US ft]	Grid North [US ft]	Latitude	Longitude	Shape
SEC.31-T05N-R61W	0.00	21.86	-36.23	3354960.43	1376953.41	40°21'40.104"N	104°13'34.284"W	polygon
SEC.32-T05N-R61W	0.00	21.86	-36.23	3354960.43	1376953.41	40°21'40.104"N	104°13'34.284"W	polygon
SEC.31/32-R05N-R61W 460' SETBACK (N 1/2 SECTION 32 & NE QUARTER SECTION 31)	6025.00	21.86	-36.23	3354960.43	1376953.41	40°21'40.104"N	104°13'34.284"W	polygon
STATE PRONGHORN V-32-31MRLNB BHL ON PLAT (1338'FNL & 2221'FEL, SEC.31)	6025.00	-115.67	-6707.91	3348291.69	1376720.06	40°21'38.736"N	104°15'00.468"W	point
STATE PRONGHORN V-32-31MRLNB TARGET 1 (1338'FNL & 531'FEL, SEC.32)	6025.00	-69.22	178.36	3355176.29	1376865.43	40°21'39.204"N	104°13'31.512"W	point
STATE PRONGHORN V-32-31MRLNB BHL ON PLAT REV-1 (1338'FNL & 2221'FEL, SEC.31)	6043.00	-115.67	-6707.91	3348291.69	1376720.06	40°21'38.736"N	104°15'00.468"W	point
STATE PRONGHORN V-32-31MRLNB TARGET 1 REV-1 (1338'FNL & 531'FEL, SEC.32)	6043.00	-69.22	178.36	3355176.29	1376865.43	40°21'39.204"N	104°13'31.512"W	point
Ex.State -32# (200'R)	6780.00	-755.08	-2537.20	3352470.98	1376140.66	40°21'32.425"N	104°14'06.590"W	circle

WELLPATH COMPOSITION - Ref Wellbore: STATE PRONGHORN V-32-31MRLNB AWB Ref Wellpath: STATE PRONGHORN V-32-31MRLNB AWP

Start MD [ft]	End MD [ft]	Positional Uncertainty Model	Log Name/Comment	Wellbore
17.00	1368.00	Custom NaviTrak (Standard) (Rockies 0.03Gt model)	BHI MWD/NAVITRAK (STD) 13.5" HOLE <146-1368>	STATE PRONGHORN V-32-31MRLNB AWB
1368.00	6364.00	Custom NaviTrak (Standard) (Rockies 0.03Gt model)	BHI MWD/NAVITRAK (STD) 8.75" HOLE <1494-6364>	STATE PRONGHORN V-32-31MRLNB AWB
6364.00	13087.00	Custom NaviTrak (Standard) (Rockies 0.03Gt model)	BHI MWD/NAVITRAK (STD) 6.125" HOLE <6454-13087>	STATE PRONGHORN V-32-31MRLNB AWB
13087.00	13155.00	Blind Drilling (std)	Projection to bit	STATE PRONGHORN V-32-31MRLNB AWB



Actual Wellpath Report

STATE PRONGHORN V-32-31MRLNB AWP

Page 6 of 6



REFERENCE WELLPATH IDENTIFICATION

Operator	BONANZA CREEK OIL COMPANY	Slot	SLOT#04 STATE PRONGHORN V-32-31MRLNB (1270'FNL & 708'FEL, SEC.32)
Area	COLORADO	Well	STATE PRONGHORN V-32-31MRLNB
Field	WELD COUNTY	Wellbore	STATE PRONGHORN V-32-31MRLNB AWB
Facility	SEC.32-T5N-R61W		

WELLPATH COMMENTS

MD [ft]	Inclination [°]	Azimuth [°]	TVD [ft]	Comment
146.00	0.620	123.320	146.00	FIRST BHI MWD SURVEY
6421.00	85.162	264.289	6029.62	7" CASING (1332'FNL & 678'FEL, SEC.32)
6464.00	87.249	266.037	6032.47	TOP (1336'FNL & 720'FEL, SEC.32)
13087.00	89.820	269.690	6019.44	LAST BHI MWD SURVEY
13155.00	89.820	269.690	6019.65	PROJECTION TO BIT (1338'FNL & 2214'FEL, SEC.31, (482'CL))